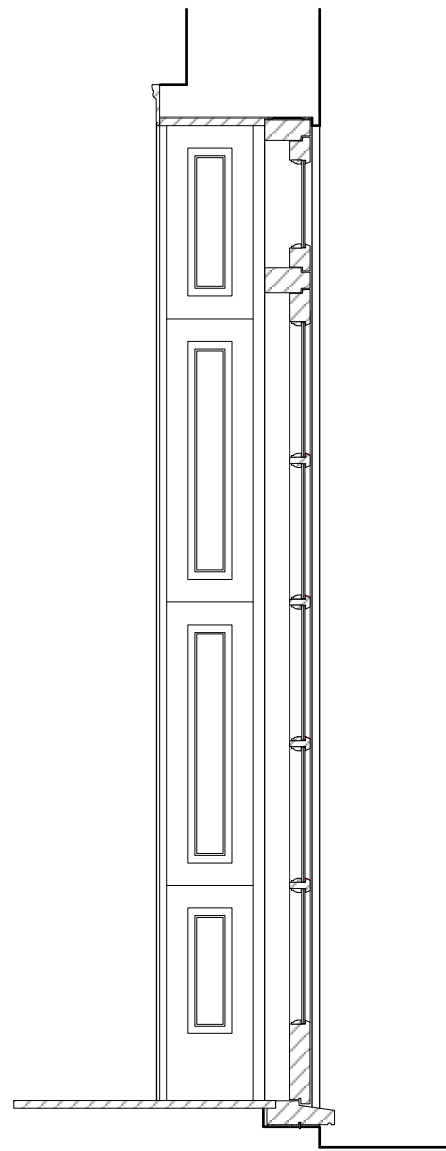


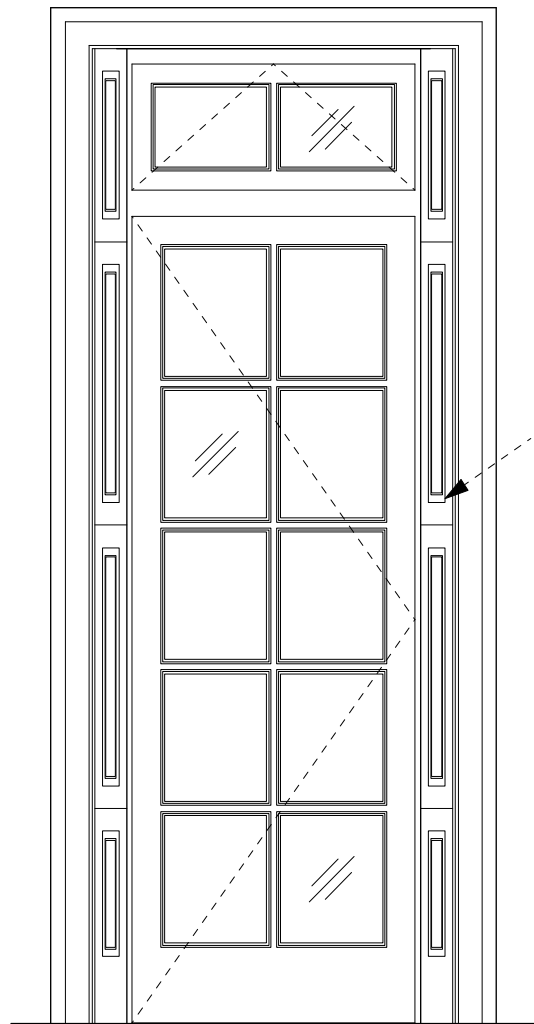
General Notes
 Do not scale from this drawing
 All dimensions to be verified on site
 To be read in conjunction with all relevant documents
 In the event of discrepancy notify the Architect immediately
 This document is copyright of Hugh Cullum Architects Ltd

Issue Status

SK	Sketch	E	Existing Condition
D	Design	P	Permissions
T	Tender	C	Contract

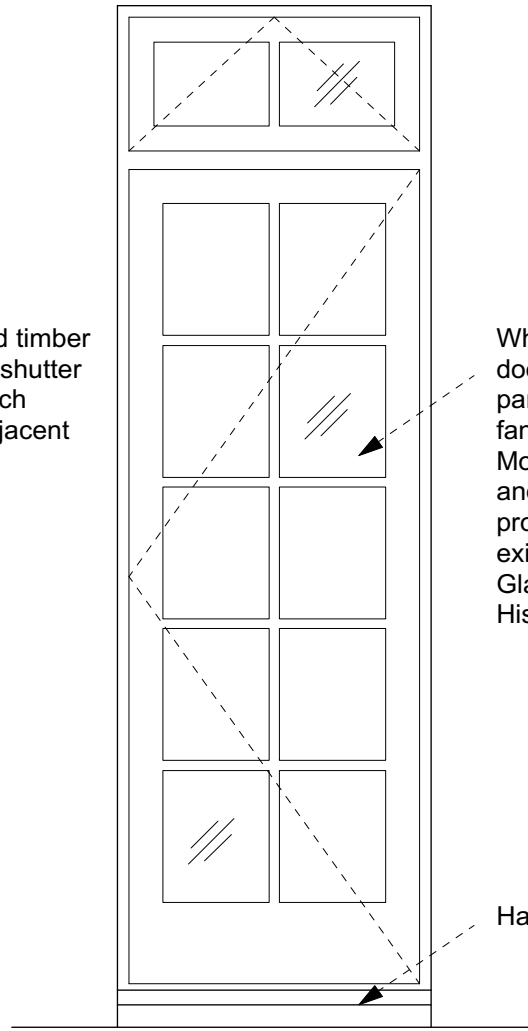


Section 1:20



Internal Elevation 1:20

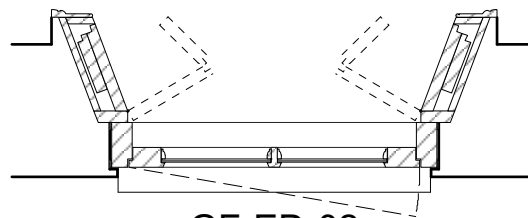
White painted timber shutters and shutter boxes to match profiles of adjacent window.



Elevation 1:20

White painted timber door with ten glazed panels and openable fanlight over. Mouldings of frame and glazing bar profiles to match existing windows. Glazing to be Histoglass Mono RT.

Hardwood sill.



GF-ED-02

Plan 1:20

0m 0.5m 1m 2m

(): Issued for Planning (12.06.18/TS/HC)
 Revision: Information (date/drawn by/checked by)

HUGH CULLUM
 ARCHITECTS LTD
 Bloomsbury Design
 61b Judd Street
 London WC1H 9QT
 t 020 7383 7647
 f 020 7387 7645
 mail@hughcullum.com

2 Provost Road
 PLANNING_Proposal
 Ext Door Details II
 1:20@A3 June 2018
 PR002-P341()