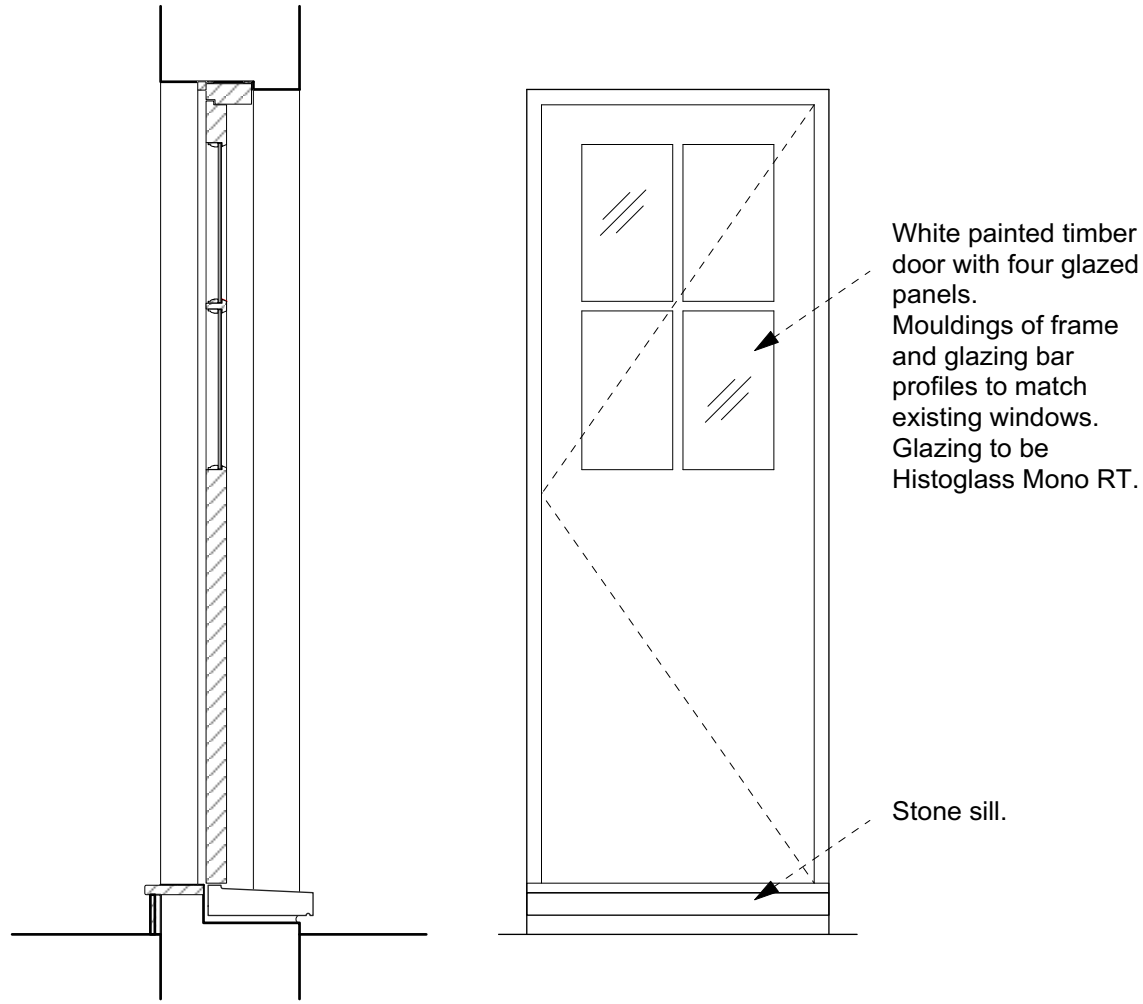


**General Notes**  
 Do not scale from this drawing  
 All dimensions to be verified on site  
 To be read in conjunction with all relevant documents  
 In the event of discrepancy notify the Architect immediately  
 This document is copyright of Hugh Cullum Architects Ltd

**Issue Status**  
 SK Sketch                    E Existing Condition  
 D Design                    P Permissions  
 T Tender                    C Contract

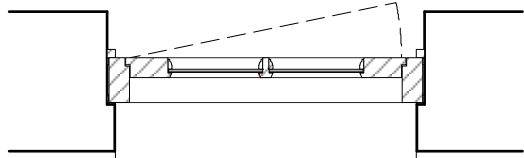


White painted timber door with four glazed panels. Mouldings of frame and glazing bar profiles to match existing windows. Glazing to be Histoglass Mono RT.

Stone sill.

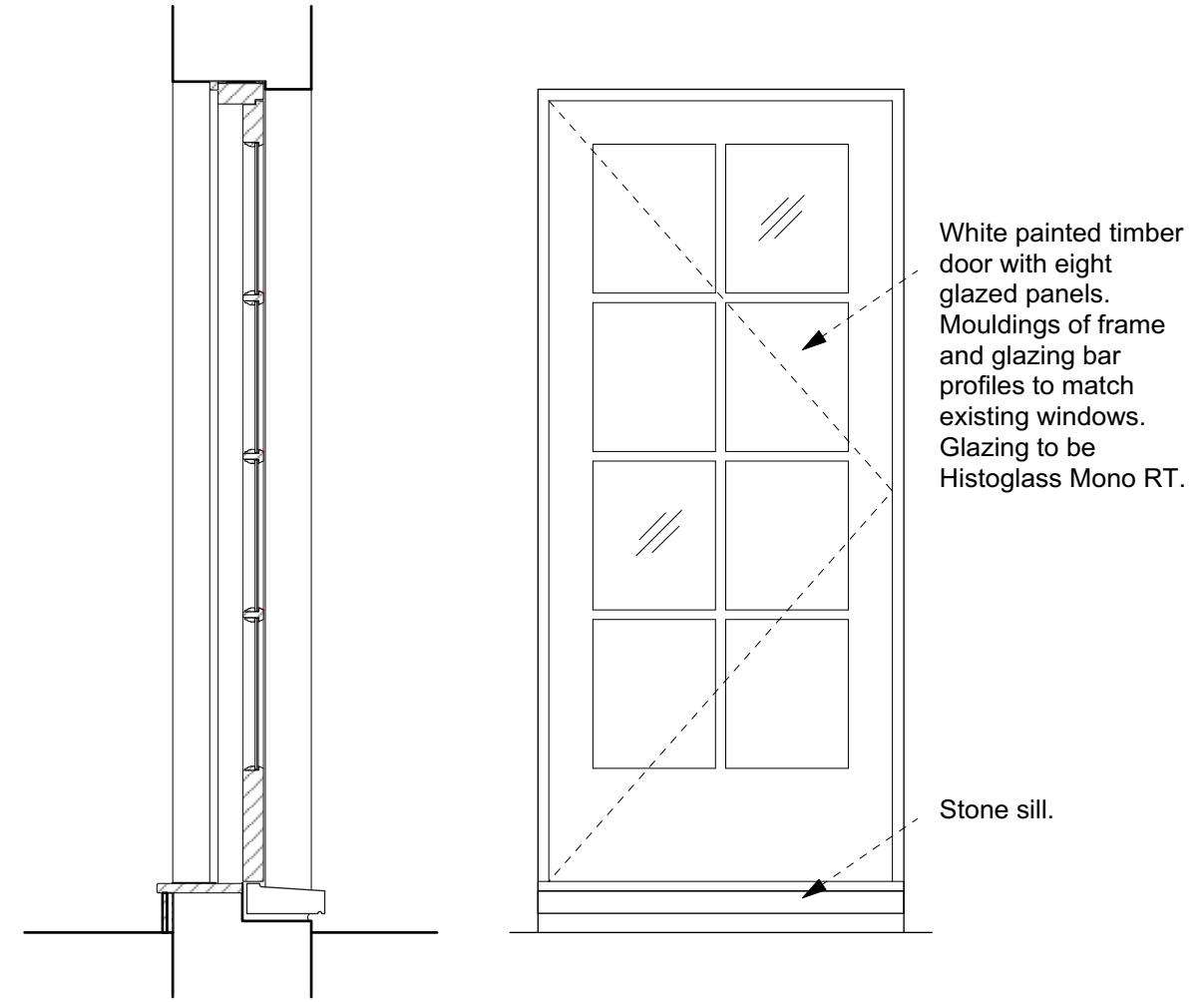
Section 1:20

Elevation 1:20



LGF-ED-01

Plan 1:20

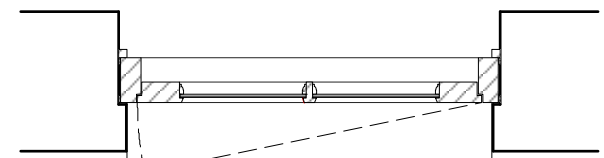


White painted timber door with eight glazed panels. Mouldings of frame and glazing bar profiles to match existing windows. Glazing to be Histoglass Mono RT.

Stone sill.

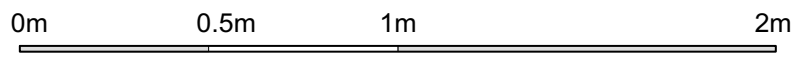
Section 1:20

Elevation 1:20



LGF-ED-02

Plan 1:20



**Proposed** \_ Detailed Arrangement \_ External Door Details I

( ): Issued for Planning (12.06.18/TS/HC)  
 Revision: Information (date/drawn by/checked by)

**HUGH CULLUM**  
 ARCHITECTS LTD  
 Bloomsbury Design  
 61b Judd Street  
 London WC1H 9QT  
 t 020 7383 7647  
 f 020 7387 7645  
 mail@hughcullum.com

**2 Provost Road**  
 PLANNING\_Proposal  
 Ext Door Details I  
 1:20@A3 June 2018  
 PR002-P340( )