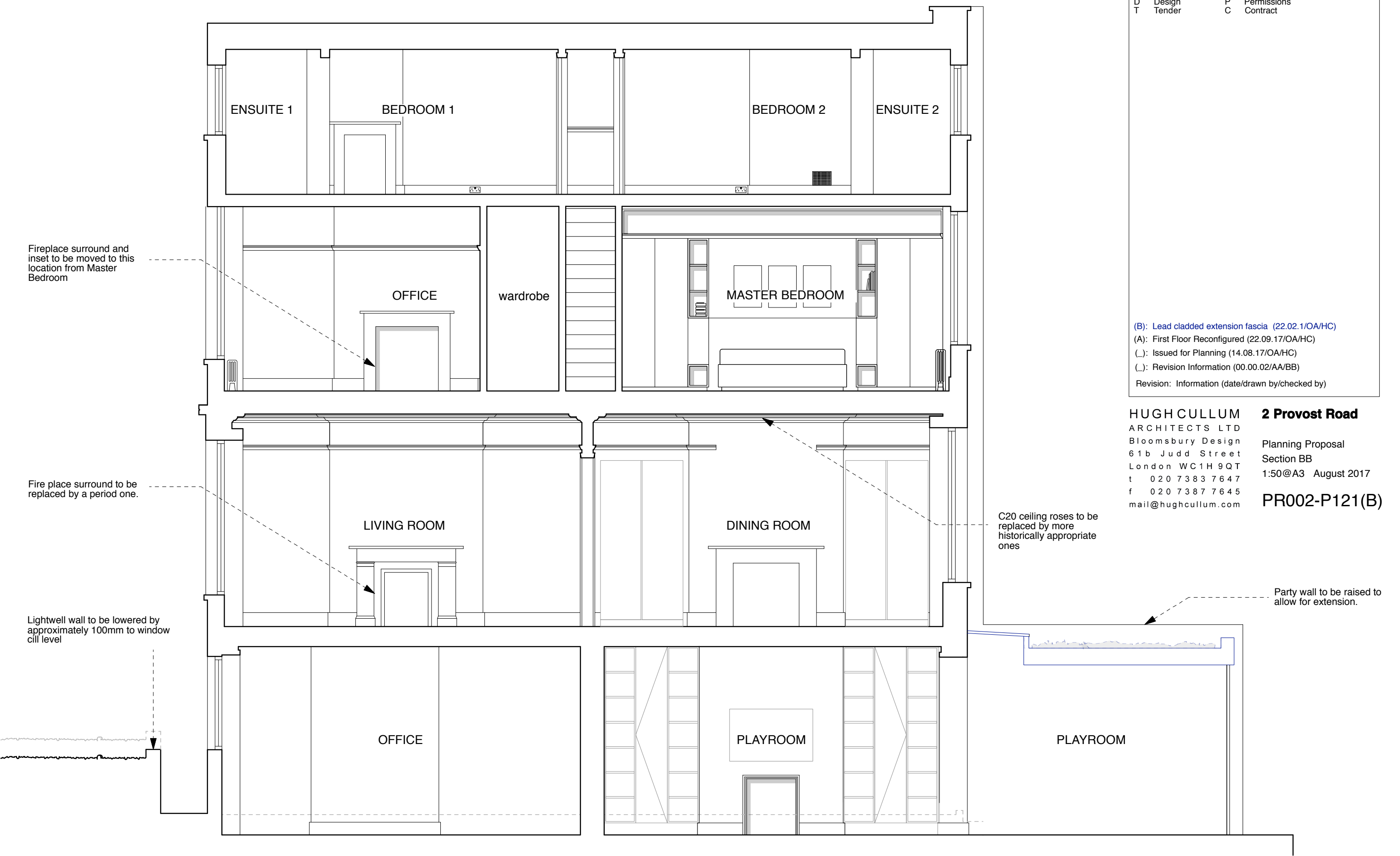


General Notes
 All dimensions to be verified on site
 To be read in conjunction with all relevant documents
 In the event of discrepancy notify the Architect immediately
 This document is copyright of Hugh Cullum Architects Ltd

Issue Status
 SK Sketch E Existing Condition
 D Design P Permissions
 T Tender C Contract

(B): Lead cladded extension fascia (22.02.17/OA/HC)
 (A): First Floor Reconfigured (22.09.17/OA/HC)
 (.) : Issued for Planning (14.08.17/OA/HC)
 (.) : Revision Information (00.00.02/AA/BB)
 Revision: Information (date/drawn by/checked by)

HUGH CULLUM ARCHITECTS LTD **2 Provost Road**
 Bloomsbury Design
 61b Judd Street
 London WC1H 9QT
 t 020 7383 7647
 f 020 7387 7645
 mail@hughcullum.com
 Planning Proposal
 Section BB
 1:50@A3 August 2017
PR002-P121(B)



0m 0.5m 1m 5m

AS PROPOSED _ Section BB