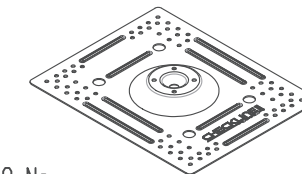


Cable: PPEC-8MM 7X7
 System CL01 = 6.5m
 System CL02 = 9m
 System CL03 = 1.8m

Total System Length = 17.3m

PPESLL-601 Ultra Fix Eco



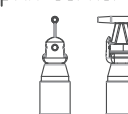
8 No.

PPESLL-502 Topfix End



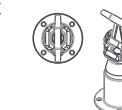
5 No.

PPESLL-501 Topfix Corner Adjustable



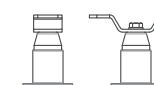
2 No.

PPESLL-505 Topfix Intermediate Post



0 No.

PPESLL-514 Crossover Post



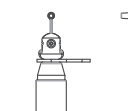
0 No.

PPESLL-514 TopFix Stand alone



0 No.

PPESLL-516 Topfix T Junction



1 No.

NOTE: REMOVE ALL BURRS AND SHARP EDGES WITH 0.25MM MAX RAD OR CHAMFER

Rev	Comments

Roof System: Single Ply Membrane	DRAWN JS	DATE 22/10/2018	SCALE N/A
Substrate : 18mm Plywood deck	Version Tender	Project No CM18072	DIMENSIONS ARE IN mm
PPE Provided : 2m Lanyard	MANUFACTURING TOLERANCES UNLESS OTHERWISE SPECIFIED	LINEAR ±0.1	ANGULAR ±0°30'
TITLE: Cliff Villas		DWG NO. DN18072	Rev 0

LET'S INNOVATE www.checkmateuk.com

CHECKMATE LIFTING & SAFETY LTD
 New Road, Sheerness, Kent, England ME12 1PZ, UK
 ☎ +44(0) 1795 580 333 ☎ +44(0) 1795 668 280
 ✉ sales@checkmateuk.com

All Intellectual Property, including drawings, branding, logo's and patents are owned by Checkmate Limited.

SHEET 1 OF 1