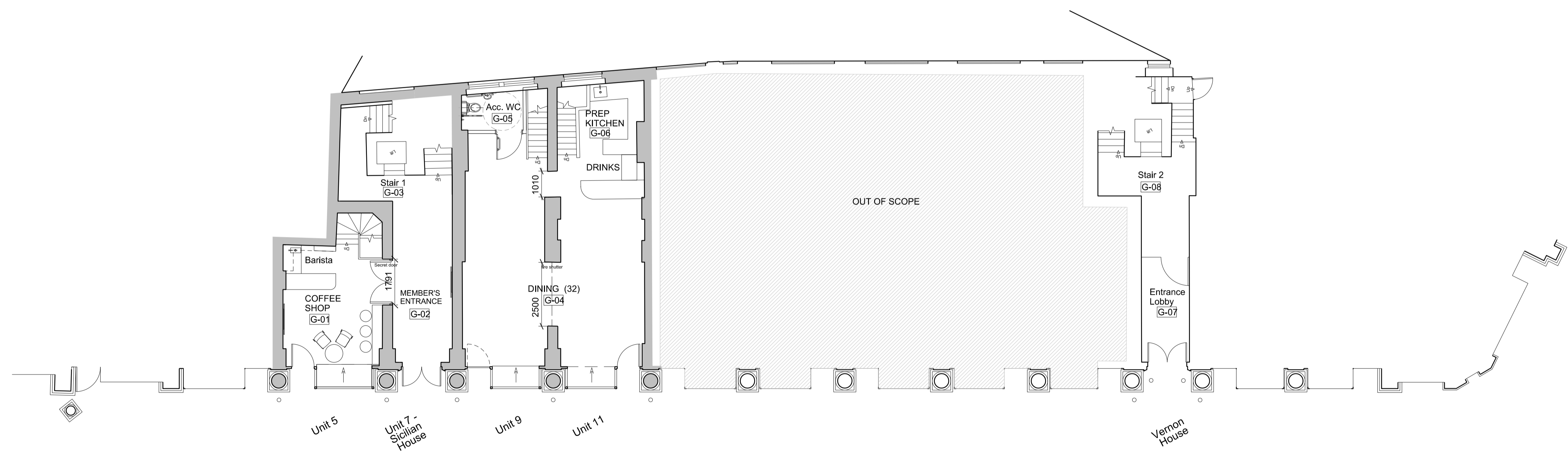


**DO NOT SCALE THIS DRAWING**  
 Contractors are to check all dimensions prior to commencement on site and notify the architect of any errors, omissions, or discrepancies.  
 TateHindle Limited retain copyright of this drawing. It may not be copied, altered or reproduced in any way without their written authority.



Rev	Description	Date	Drawn	Checked
07	Planning amendments	20-11-18	HEG	SB
06	Stage 3 Issue	14-09-18	HEG	SB
05	Issued for planning	15-08-18	HEG	SB
04	Stage 3 Draft Issue	10-08-18	HEG	SB
03	Issued for planning draft	31-07-18	HEG	SB
02	Stage 2 Issue	23-07-18	HEG	SB
01	Survey information received	19-07-18	HEG	SB
00	Issued with pre-app	09-03-18	HEG	SB

Status  
**FOR INFORMATION**

Client  
**LABs Holborn**

Project  
**LABs Sicilian Avenue and Vernon House  
 Holborn, London**

Drawing  
**PROPOSED  
 GROUND FLOOR PLAN**

Scale	Drawn	Date	Checked
1:100@A1	HEG	11-06-18	SB

Project no.	Dwg	Revision
15166	A(03)010	07

**tatehindle**  
**TateHindle Limited**  
 1 Lindsey Street  
 Smithfield  
 London EC1A 9HP  
 T 020 7332 4850  
 mail@tatehindle.co.uk  
 www.tatehindle.co.uk

