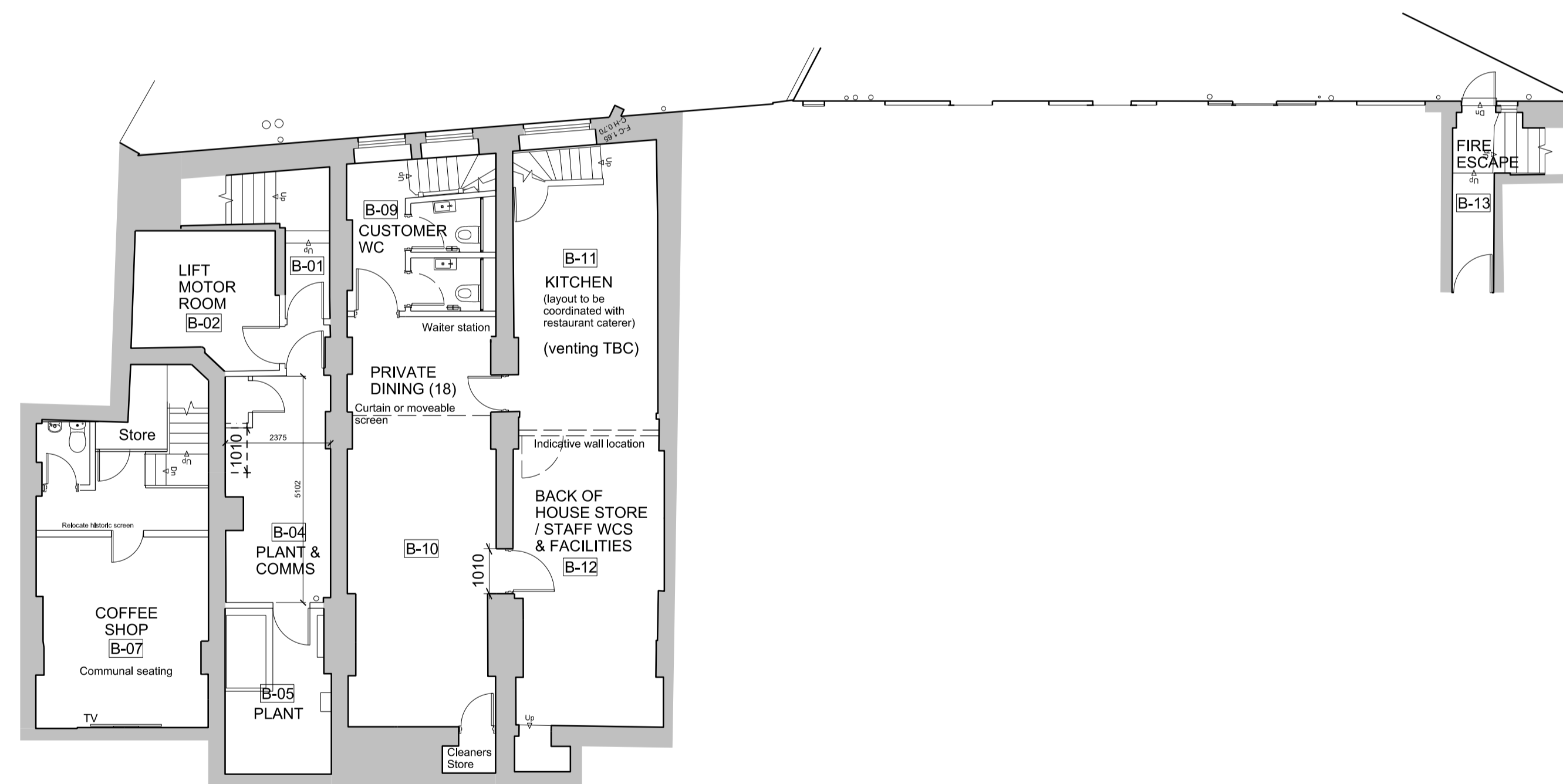


DO NOT SCALE THIS DRAWING

Contractors are to check all dimensions prior to commencement on site and notify the architect of any errors, omissions, or discrepancies.

TateHindle Limited retain copyright of this drawing. It may not be copied, altered or reproduced in any way without their written authority.



NOTE: TO BE COSTED AS AN ALTERNATIVE OPTION TO (03)009

Rev	Description	Date	Drawn	Checked
01	Staircase altered for planning	20-11-18	HEG	SB
00	Stage 3 Issue	14-09-18	HEG	SB

FOR INFORMATION

Client
LABs Holborn

Project
LABs Sicilian Avenue and Vernon House Holborn, London

Drawing
PROPOSED BASEMENT FLOOR PLAN ALTERNATE OPTION

Scale	Drawn	Date	Checked
1:100@A1	HEG	11-06-18	SB

Project no.	Dwg	Revision
15166	A(03)009a	01

tatehindle

TateHindle Limited
1 Lindsey Street
Smithfield
London EC1A 9HP
T 020 7332 4850
mail@tatehindle.co.uk
www.tatehindle.co.uk

