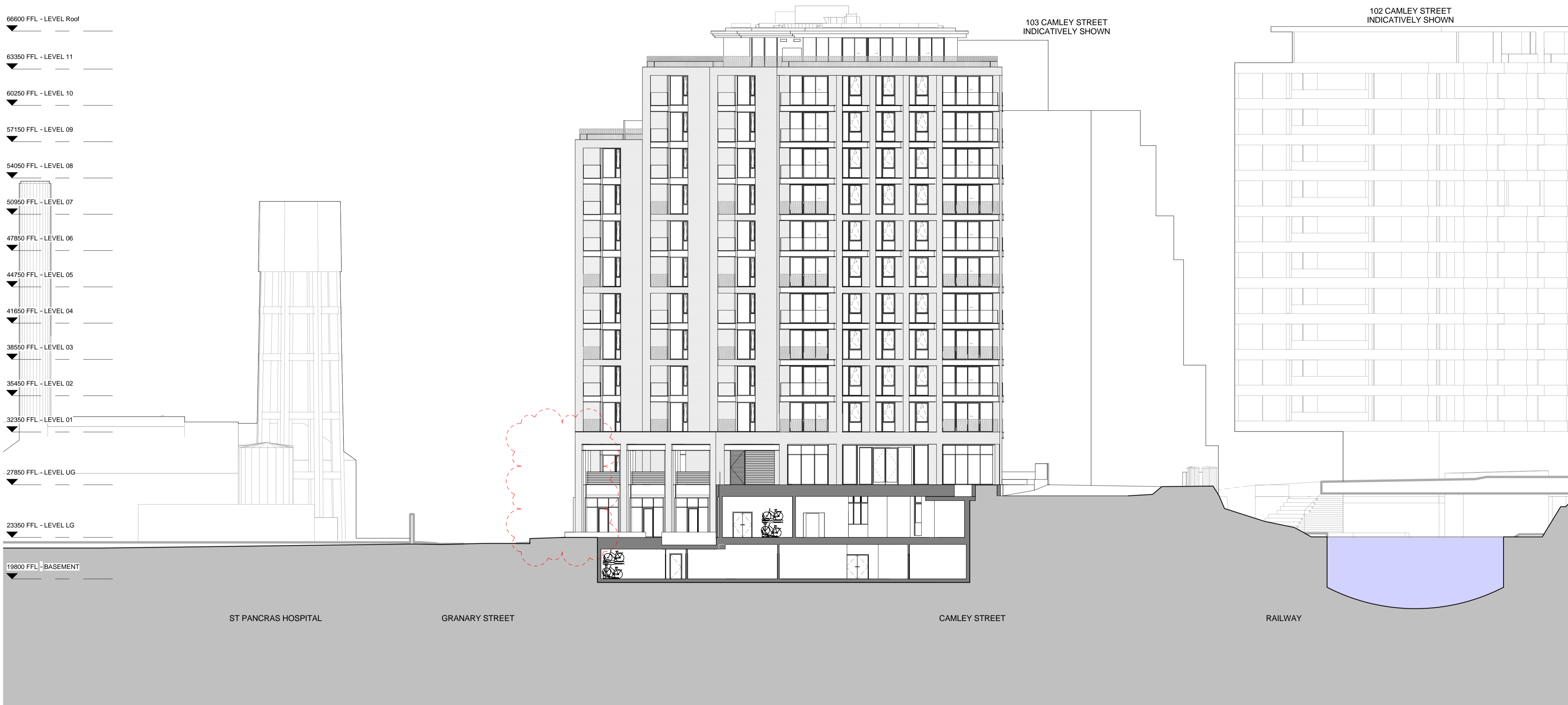
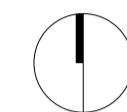


All dimensions are in mm unless otherwise stated
 All dimensions to be verified on site before proceeding with the work
 Any discrepancies to be notified in writing to architect immediately
 All boundaries indicative only and to be confirmed by others



Proposed South East Elevation (North Block)

02	05.11.18	Canal wall in distance hidden.	TW
01	26.07.18	Issued to London Borough of Camden as part of July Section 73 Application.	TW
-	16.11.16	Issue to the London Borough of Camden.	TW
REV	DATE	NOTES	INT

PLANNING

HUTCHINSON & PARTNERS

3.12 The Record Hall, 16-16A Baldwin's Garden, London, EC1N 7RJ
 1.020 3176 8192 e.info@hutchinsonandpartners.com w.www.hutchinsonandpartners.com

JOB TITLE
 Stanley Sidings, 101 Camley Street, Camden

DRAWING TITLE / LOCATION
 PROPOSED GA SE ELEVATION NORTH BLOCK

DRAWN BY GFV	CHECKED TW	SCALE 1:200 @ A1	STATUS PLANNING
PROJECT 16022	DRAWING NO 01 AP 0030 007	REVISION 02	

CLIENT
 Chalk Farm Developments Ltd

THIS DRAWING REPLACES THE PREVIOUSLY APPROVED PLANNING DRAWING 01 AP 0030 007

