

Grafton Developments Ltd.

3 COBHAM MEWS NW 1.

Proposed Elevations

Drg. no: 3CM/D4A

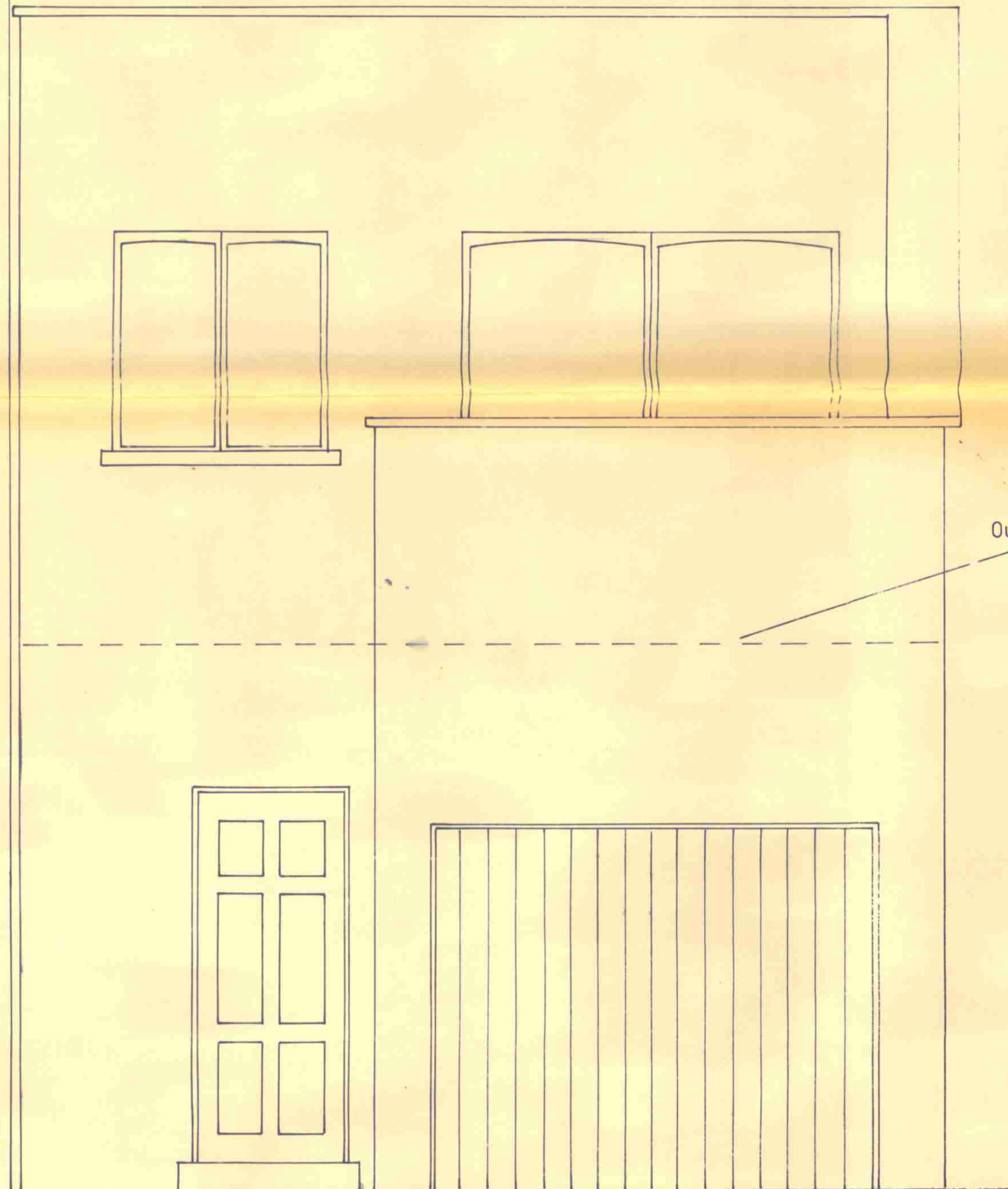
Date: February 1989

Scale: 1/25

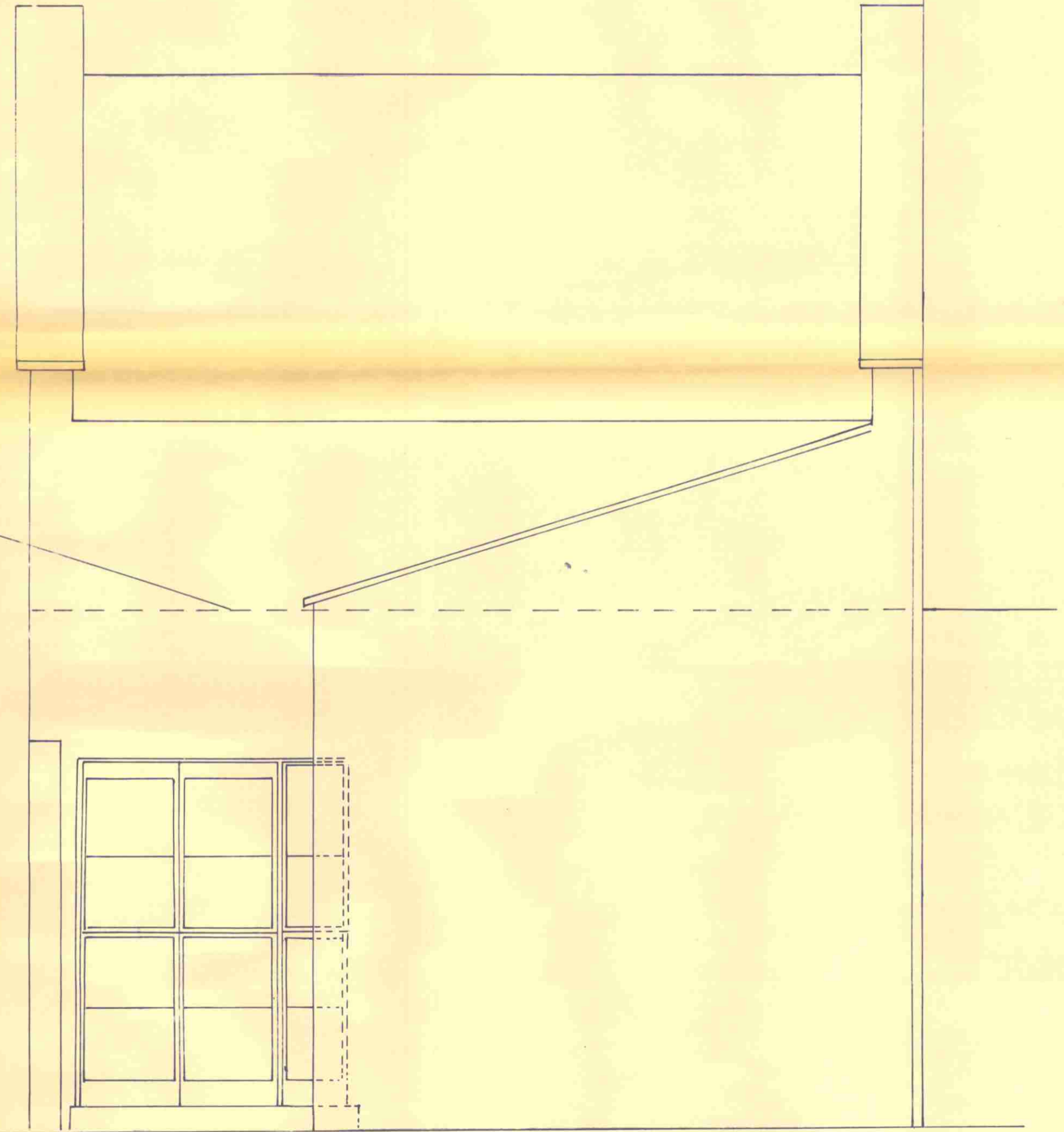
8802693R2

Notes: All dimensions in millimetres

*Case Copy
A 27/4/89*



FRONT



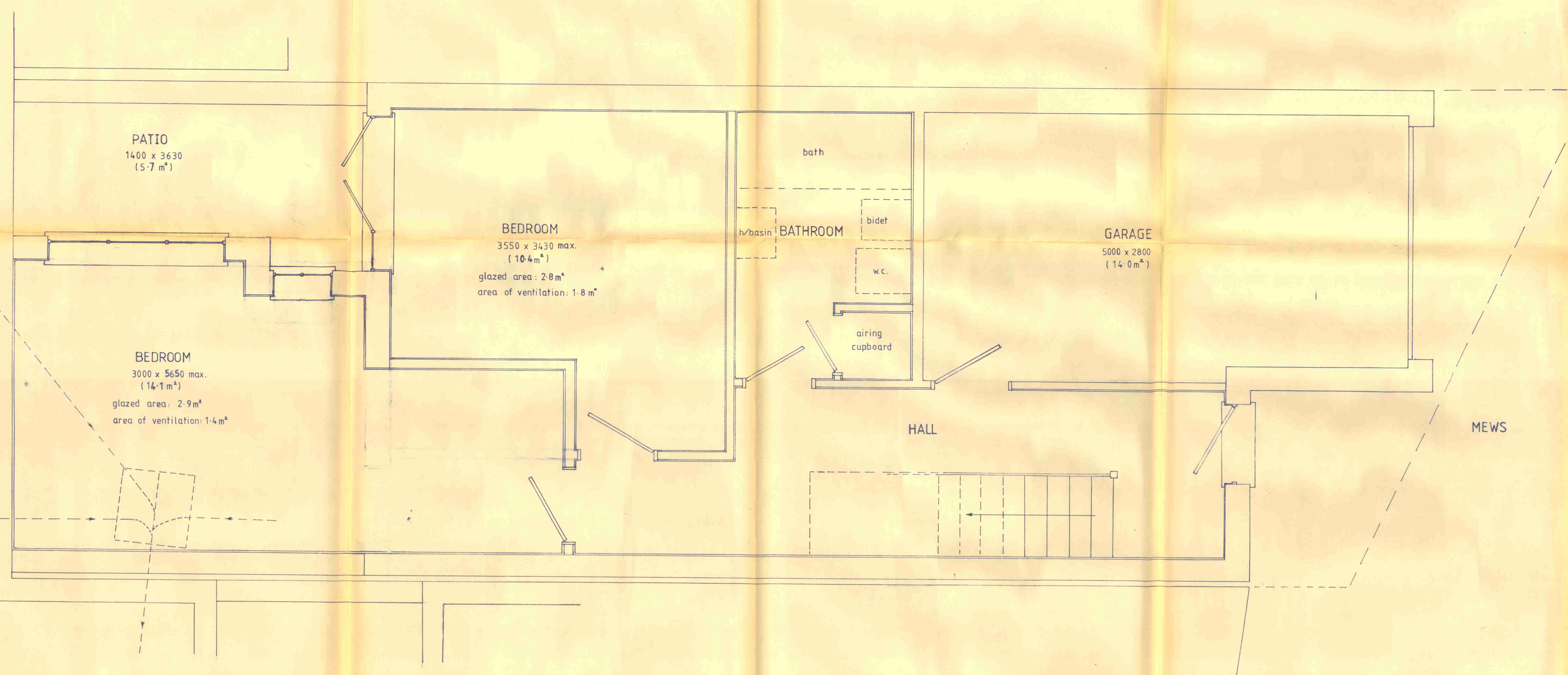
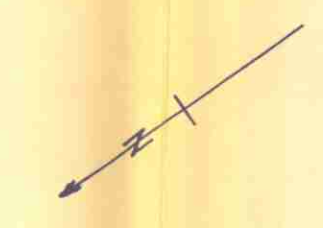
REAR

Grafton Developments Ltd.
3 COBHAM MEWS NW1
Proposed Layout - Ground floor level
Drg.no.: 3CM/D2A
Date: February 1989
Scale: 1/20

8802693R2

Notes: All dimensions in millimetres
(- m²) nett floor areas in sq metres
Density: 250 hr.ha.
Plot ratio: 1.0
Site area: 0.012 ha.

*Case Copy
A 27/4/89*



Grafton Developments Ltd.
3 COBHAM MEWS NW1
Proposed Layout - 1st. floor level

Drg no.: 3CM/D3A

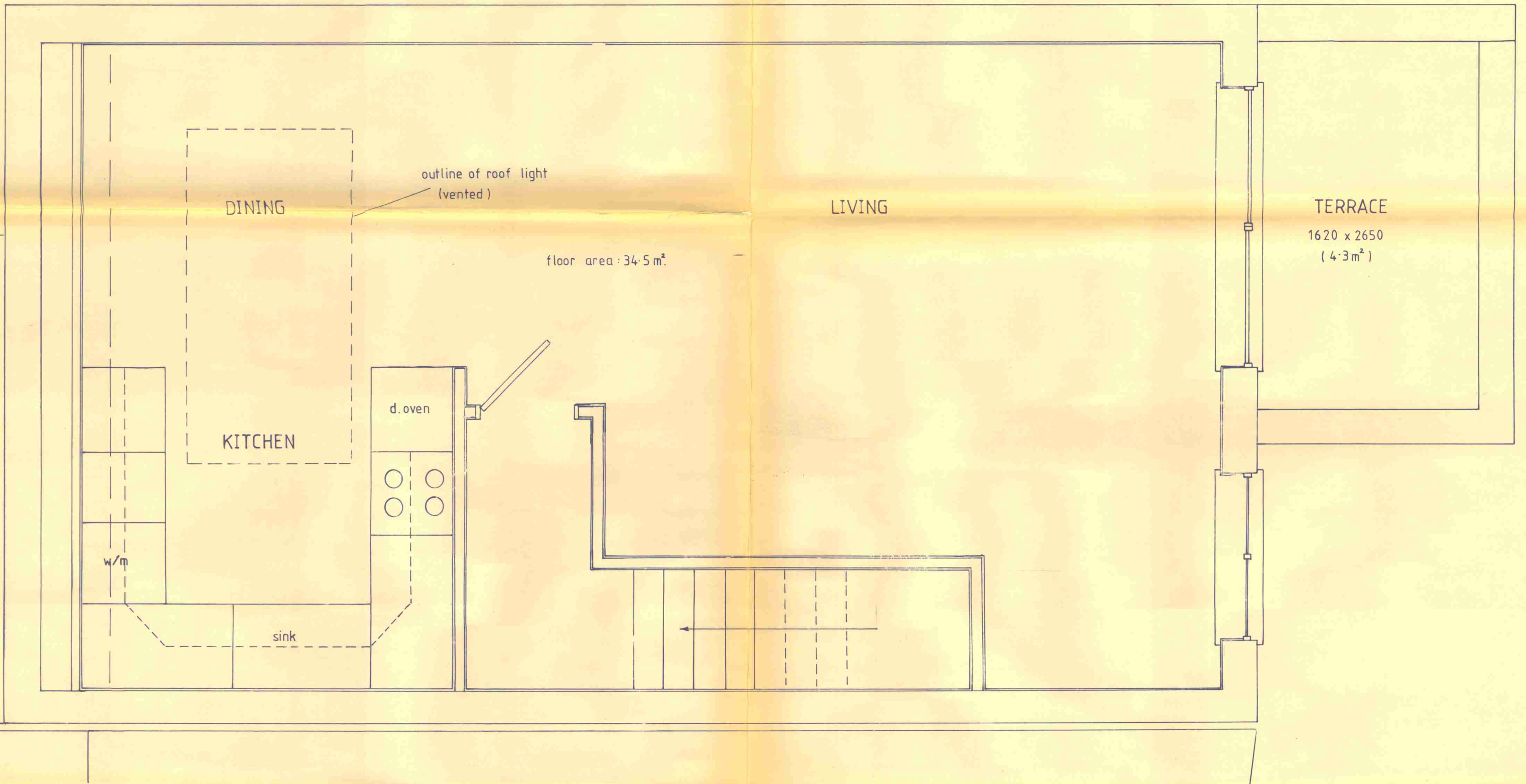
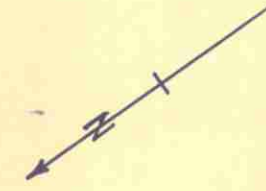
Date: February 1989

Scale: 1/20

Notes: All dimensions in millimetres
Venting from kitchen by mechanical extraction

8802693R2

*Case Copy
A 27/4/89*





London Borough of Camden
Town and Country Planning Act 1971 (sections 36 & 37)
APPLICATION DATED

Premises (19 & 21 Agar Grove) 3 COBHAM MEWS
 Verged RED above

Scale 1:1250 rear of 3 Murray Street

