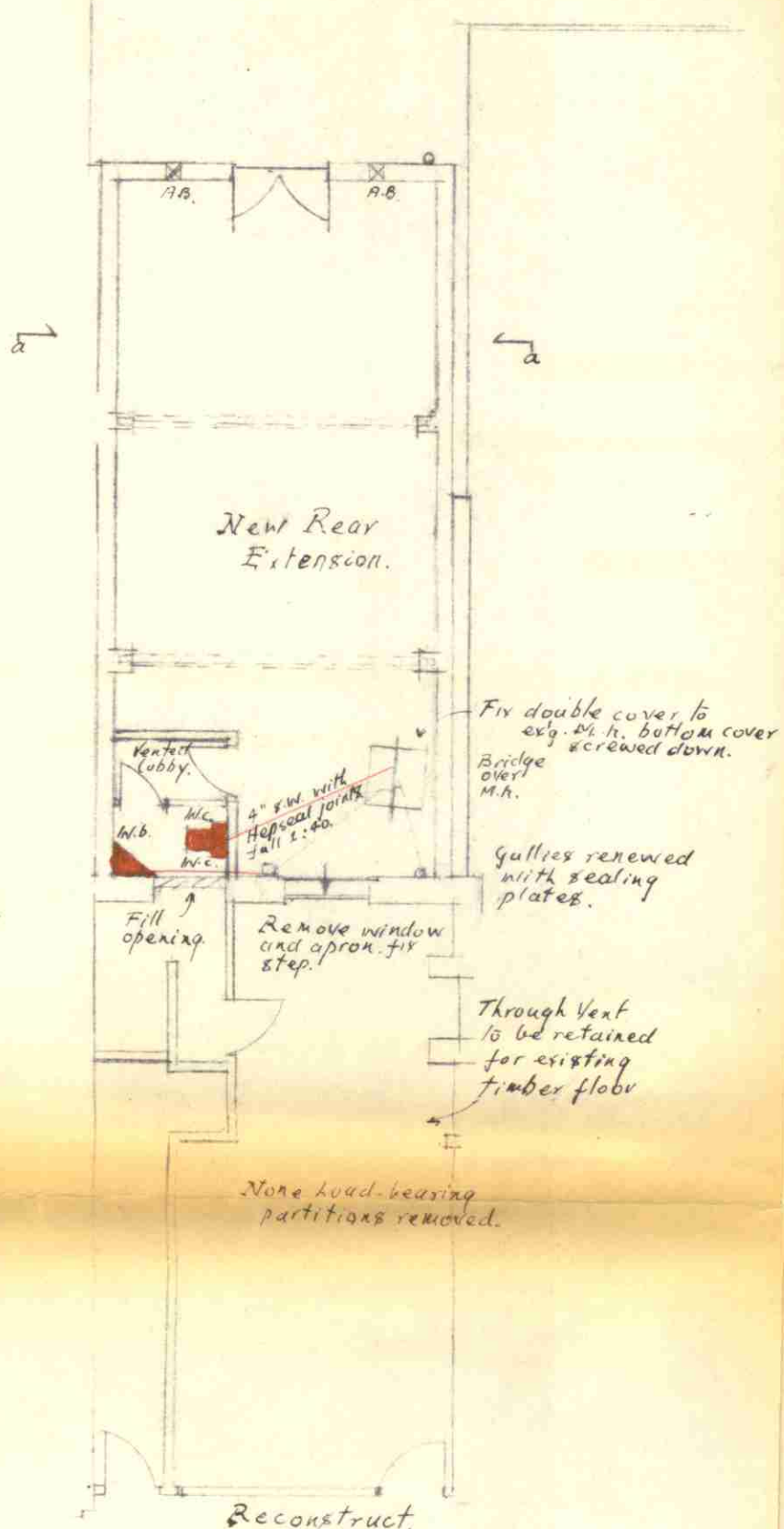
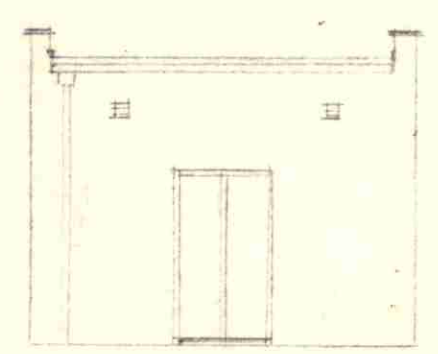


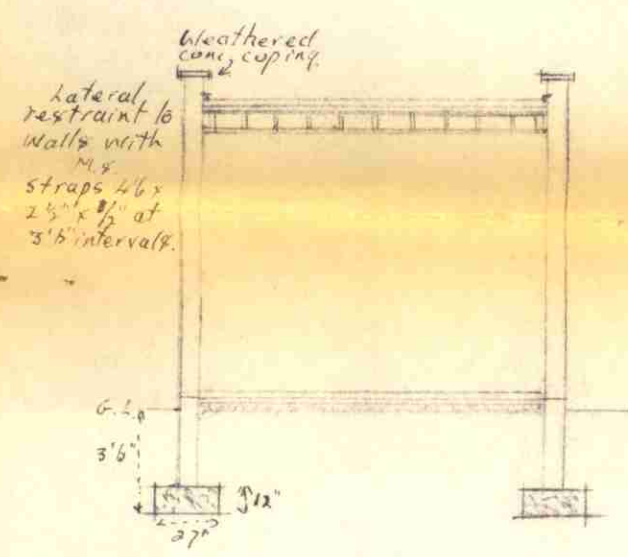
Ground Floor Plan - Existing.



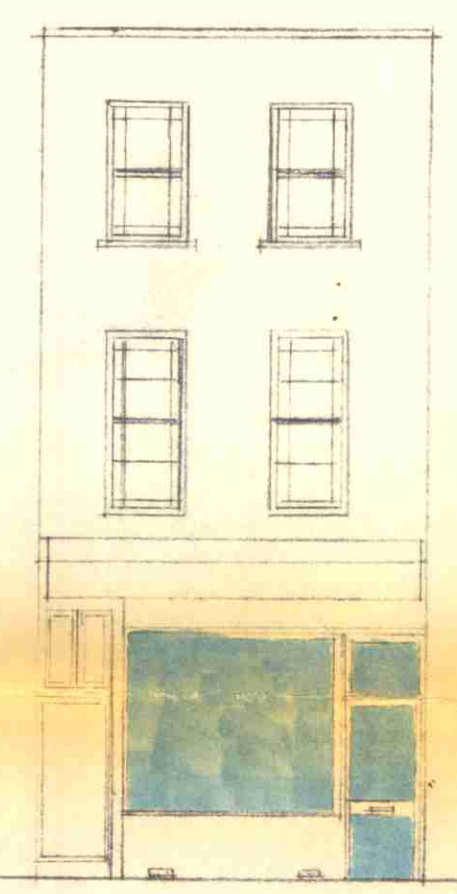
Ground Floor Plan - Proposed.



Extension - Rear Elevation.



Section a-a.



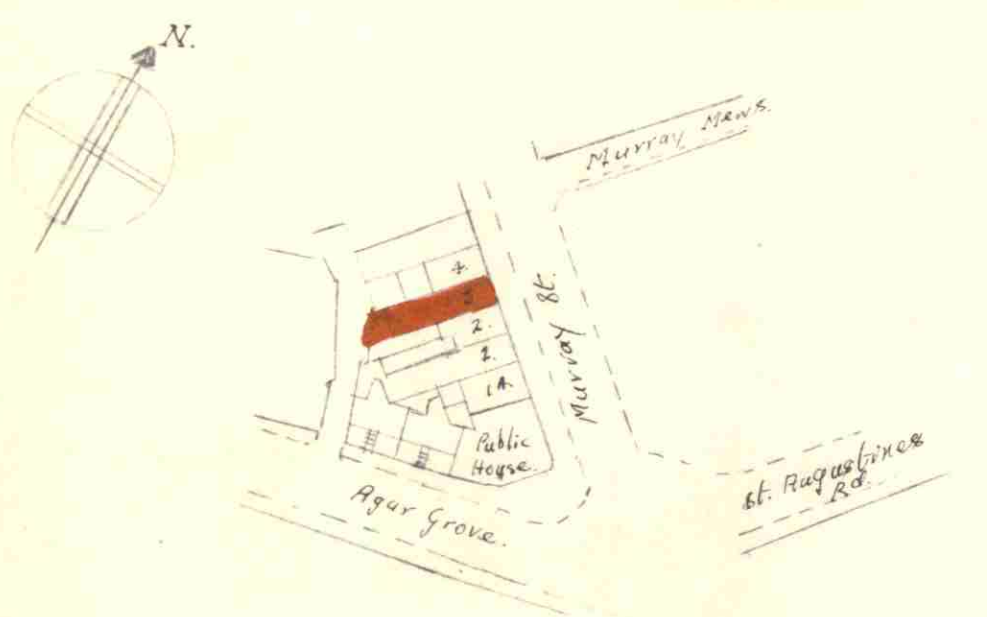
Front Elev'n - Proposed.

LONDON BOROUGH OF CAMDEN
TOWN AND COUNTRY PLANNING ACTS
8 APR 1987
APPROVED
PLANS NOT A PROPOSAL
ON BEHALF OF THE COUNCIL

3, Murray St. - N.W. 1.

Proposed Ground Floor Ext'n at Rear.

Scale 1/8" = 1 ft. - Jan. 1987.



Block Plan - 1:1250.

LONDON BOROUGH OF CAMDEN
TOWN AND COUNTRY PLANNING ACTS
8 APR 1987
RECOMMENDATION AGREED
ON BEHALF OF THE COUNCIL

- Notes:-
1. New roof 6"x7" joists at 14" ctrs. 3 layers roofing felt finished with 1/2" chippings laid in hot bitumen; 83 mm. Top deck, 1 layer of felt, 2" decking, furred to fall 1" in 10ft; foil backed p/bd. to ceiling. Rost felt to B.S. 747 laid to c.p. 124. Turned up at parapets 6" and pointed in.
 2. Walls 85" load-bearing blocks with brickwork to piers, angles, junctions and below floor level with lead core felt d.p.c. Lined internally with foil backed p/bd rendered externally.
 3. Floor 4" h.c. 4" conc. 2" screed with 1000 gauge p.c. membrane to lap d.p.c. in walls and 4" g.
 4. No 2"x4"x6" R.B.J.4 fixed to carry joists; on 4"x4" brick piers. Cased to 1/2 hr. Fire resistance.
 5. Mech. Vent. to M.H.; fan operated from light switch with 20 min. overrun; fan motors in duplicate.
 6. M.H. drain with 6" conc. surround; connected to M.H. with 1/4 section bend. Ex'g above ground drainage to be amended as necessary by agreement on site with h.A. officer.

TP 87 0079