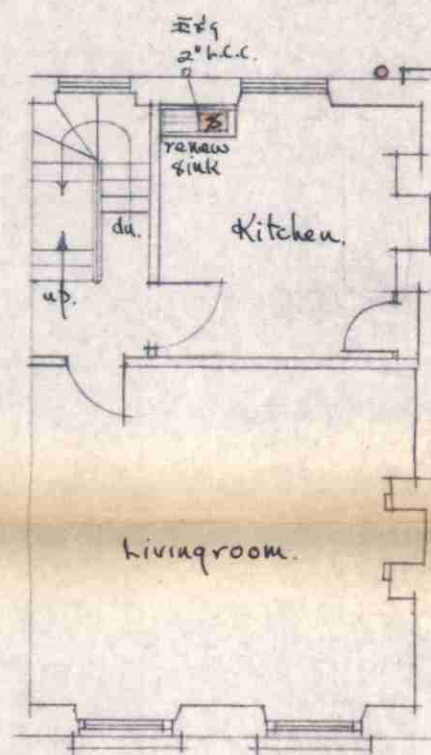
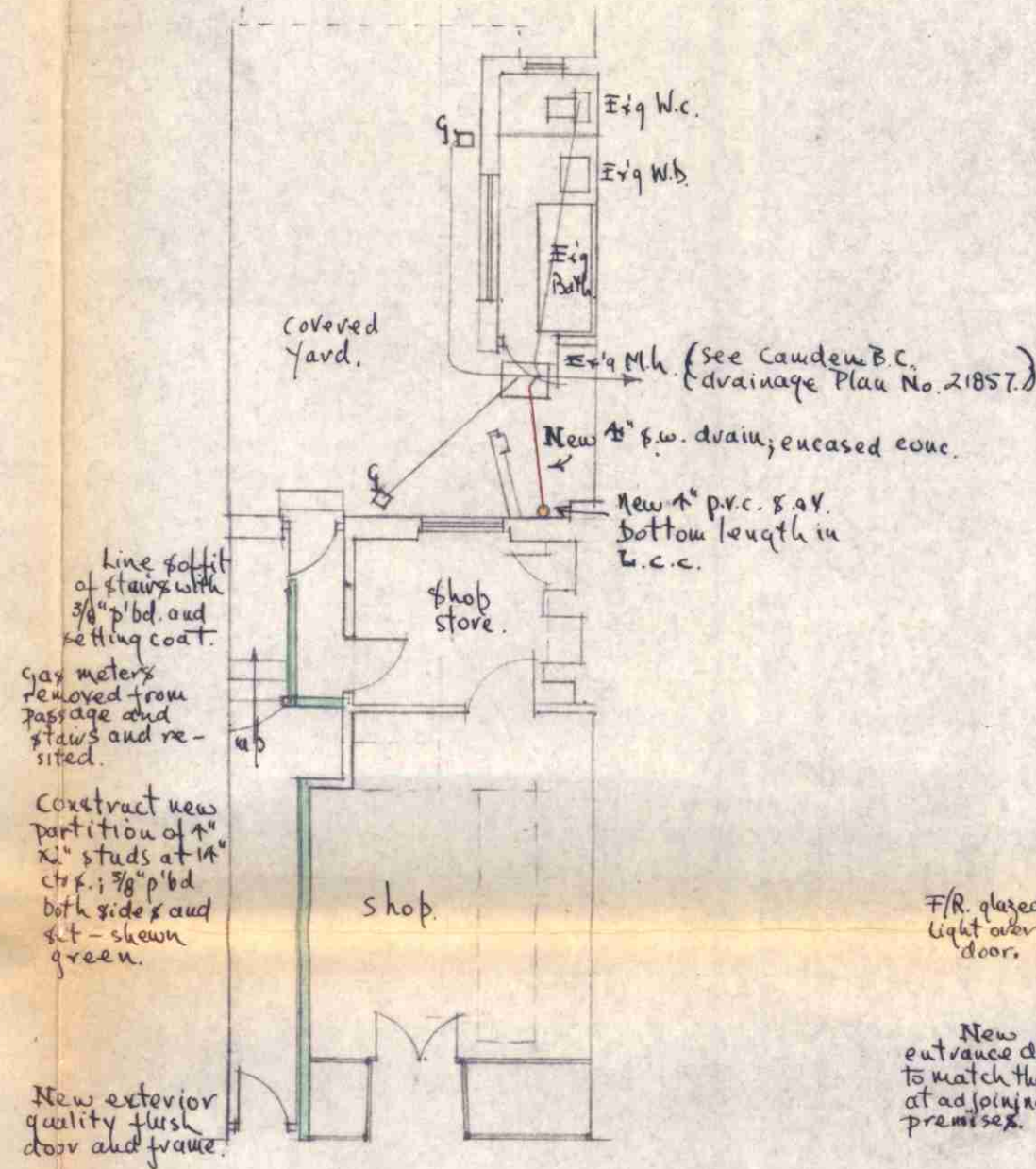


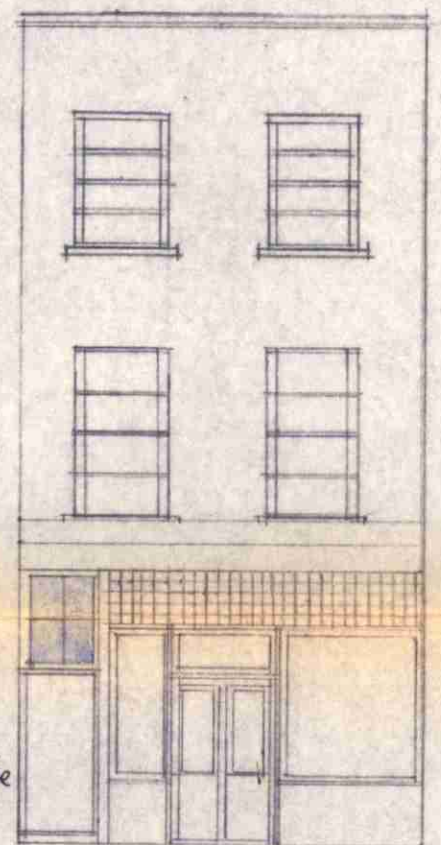
Second Floor Plan



First Floor Plan.



Ground Floor Plan.



Front Elevation.

No. 3, Murray St., N.W. 1.

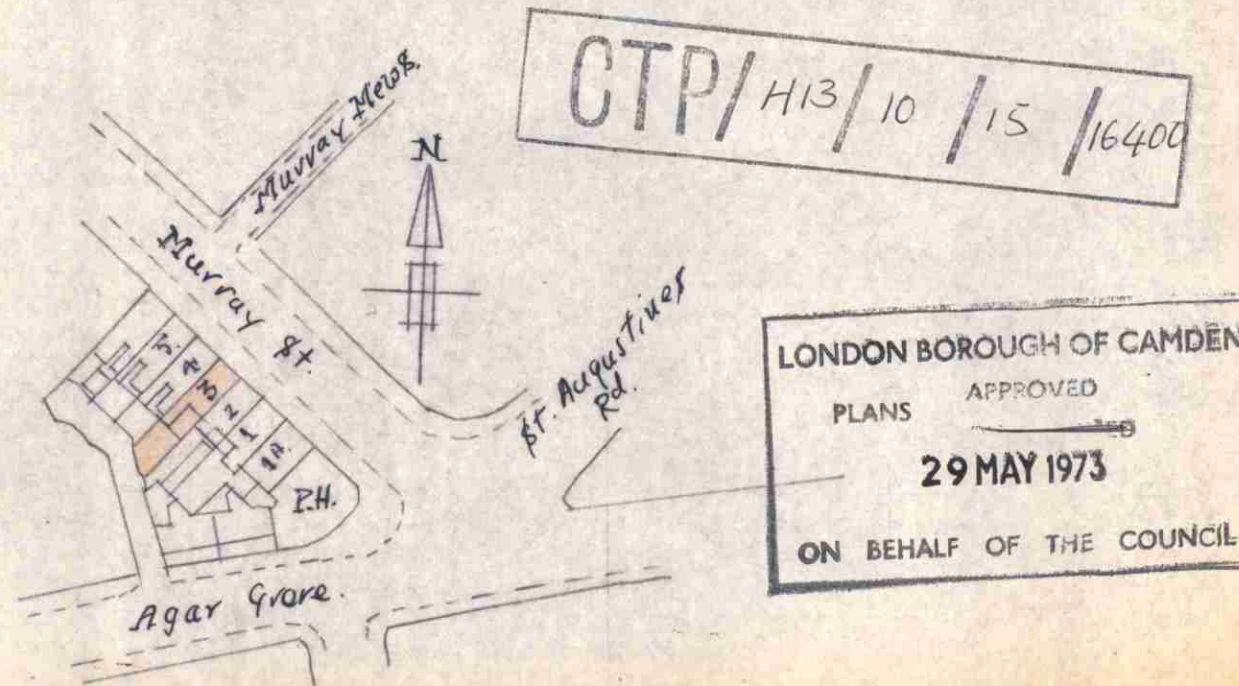
Proposed New Bathroom on Second Floor and

New entrance at front to upper Maisonette.

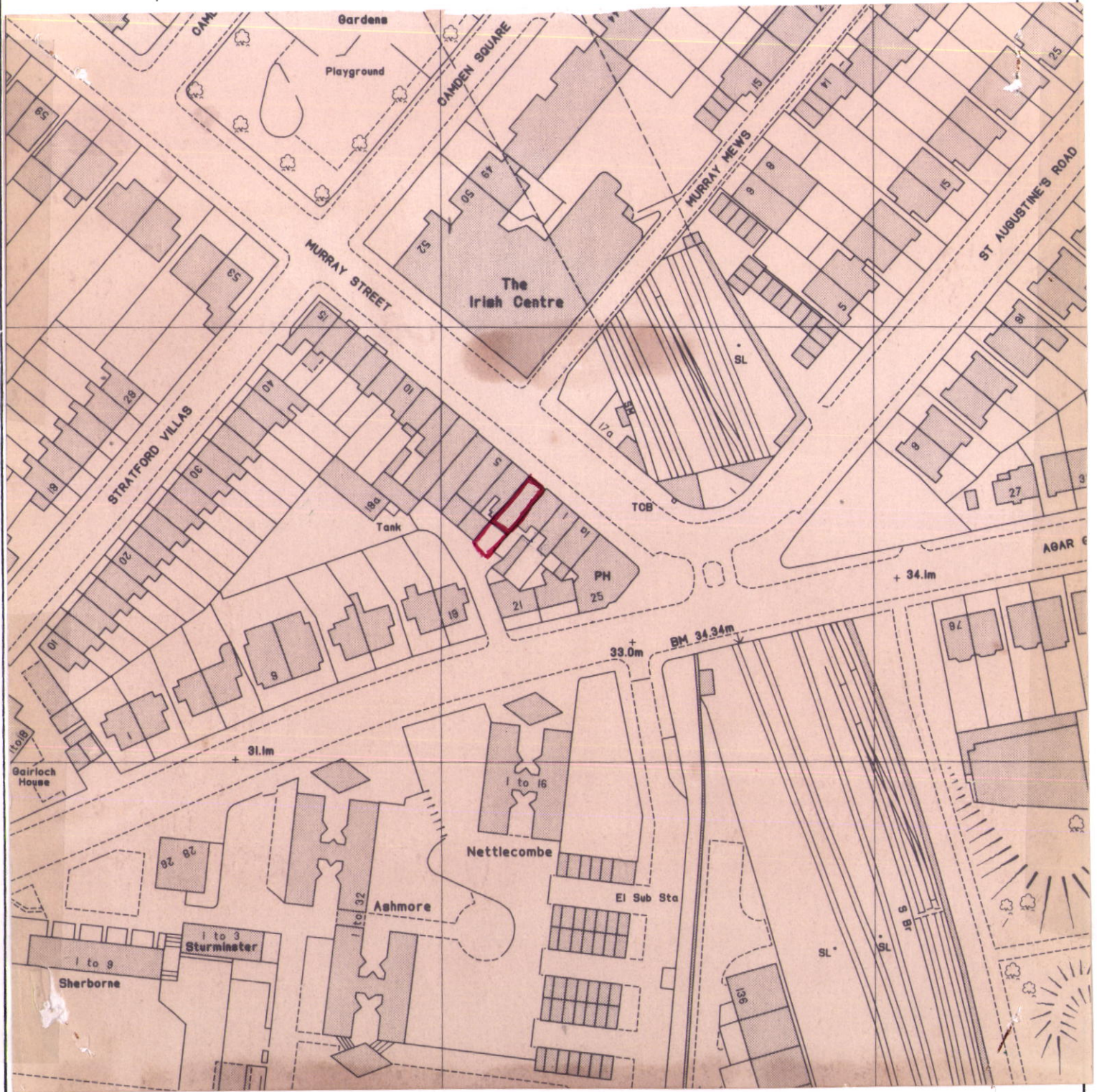
G.J. Smith, (Builders) Ltd., 89, Chalk Farm Rd. N.W. 1.

April, 1973. - Scale 1/8" = 1 ft.

Block Plan.
1/4250.



LONDON BOROUGH OF CAMDEN
PLANS APPROVED
29 MAY 1973
ON BEHALF OF THE COUNCIL



London Borough of Camden
Town and Country Planning Act 1971 (sections 36 & 37)
APPLICATION DATED

Premises *3 Murray Mews Street*
 Verged RED above

Scale *1:1250*

