

Additional Double Stacked Cabins

New location of Haki Stairs, tree doesn't cover extent shown.

Extend Gantry up to wall to Pub to East end.

PLAN VIEW
Gantry Level

DENOTES KONSTRUKTA FIRE-SAFE KS071 CABIN UNITS

CROWNDALE ROAD

GENERAL REQUIREMENTS FOR GANTRY SCAFFOLDS

SCAFFOLD HAS BEEN DESIGNED TO ABIDE WITH INFORMATION PROVIDED BY CITY OF LONDON COUNCIL

SCAFFOLD MUST HAVE A CLEAR HEADROOM OF 2.6M DESIGN PROVIDES 3.0M CLEAR HEADROOM

KERBSIDE GAPS MUST BE PROVIDED IN SCAFFOLD STRUCTURE. 1.65M BAYS ARE TO BE OMITTED INTERMITTENTLY IDEALLY IN LESS THAN 15M INTERVALS

ALL FIXINGS ARE TO BE FACING INWARDS TO REDUCE INTERFACE WITH PUBLIC

ALL KERBSIDE STANDARDS ARE TO BE AT LEAST 450MM FROM KERB EDGE. DESIGN PROVIDES AT LEAST 480MM

MAXIMUM SWL

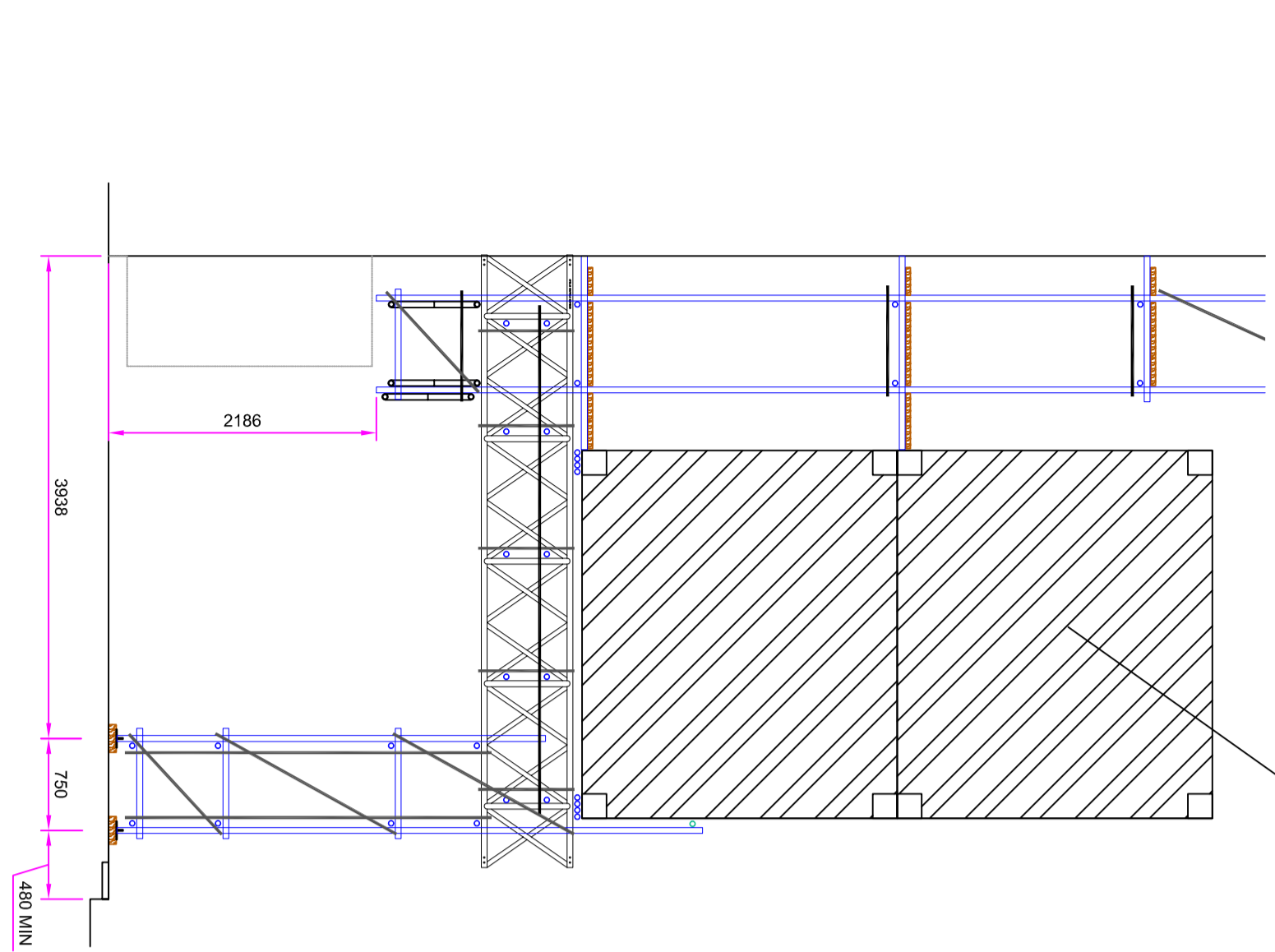
THIS SCAFFOLD IS DESIGNED FOR A MAXIMUM SAFE WORKING LOAD OF:

3.00kN/m² (300 kg/m²) ON GANTRY,
45kN REACTION FROM CABIN SUPPORT LEGS

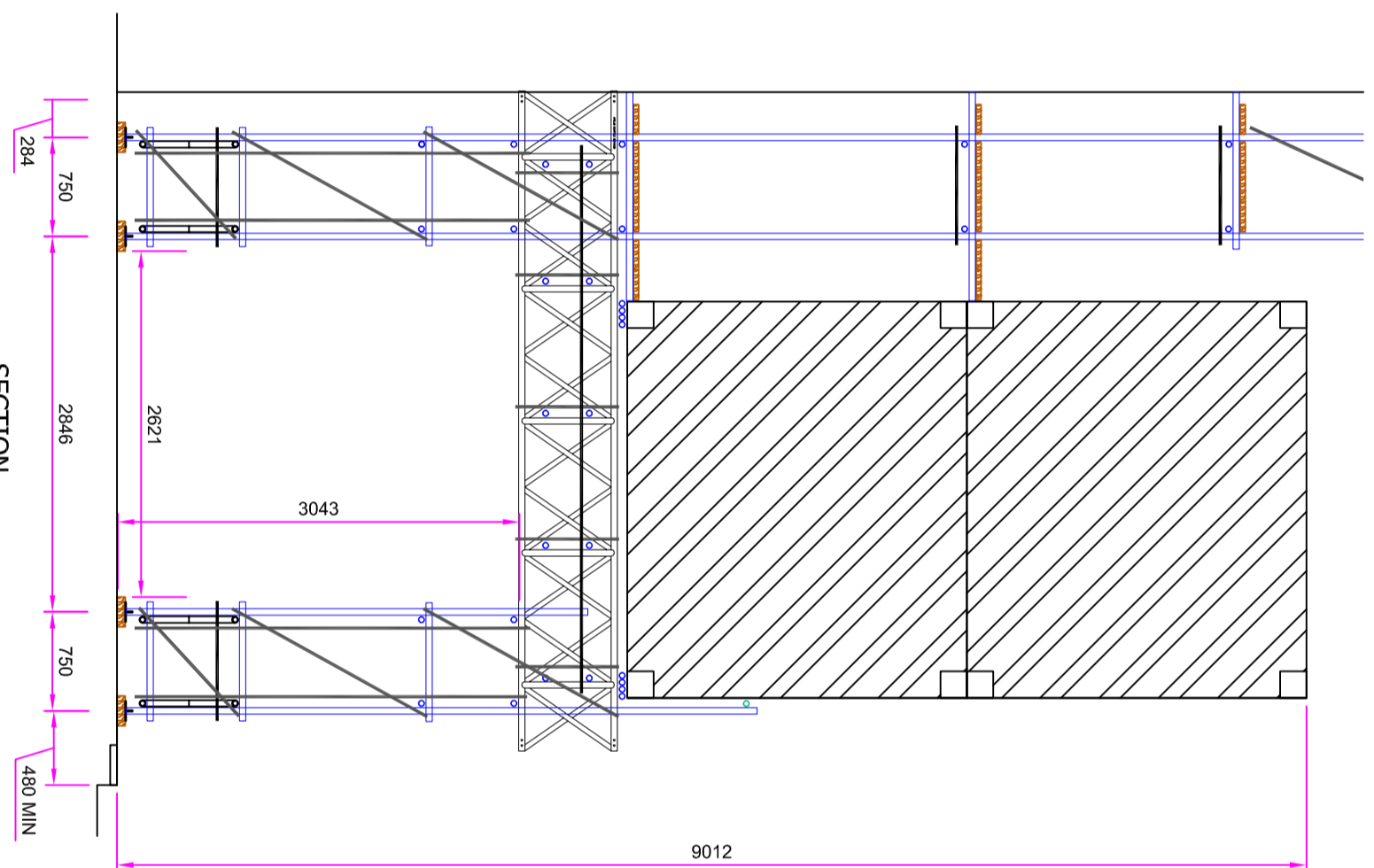
THESE LOADS MUST NOT EXCEEDED
All loads are unfactored

SUBJECT TO CHANGE

SCAFFOLD GANTRY WILL BE SUBJECT TO CHANGE FOLLOWING DESIGN OF TEMPORARY ROOF AND SUPPORTING SCAFFOLD. DURING THIS CHANGE GANTRY ENVELOPE, INTERFACES AND INTERFERENCES WILL NOT CHANGE



SECTION
Bridged Over Doorways



SECTION
Bridged Over Covers and Basements

NOTES:
This drawing is confidential and is the exclusive property of RDG ENGINEERING (TW) LTD.
No unauthorised use, copy or disclosure is to be made and is to be returned upon request.
File Only - All plant supplied on the basis is subject to our conditions of hire or sale as applicable.

The customer should check that we have correctly interpreted his / her requirements and that all loadings, dimensions, details, erection and striking sequences, etc. are correct and practicable.

The customer is to ensure that the ground, structure and / or base provided for our scaffold is adequate to support the loads applied without settlement, including the provision for any necessary spreaders.

Drawing Notes:
READ ALL NOTES ON DRAWING.

All bracing / restrains are to be installed as per drawing.

All design and erection of scaffolds are to conform with the following British Standards and Codes Of Practices where applicable

- BS EN 293:2001 Loose steel tubes for tube and coupler scaffolds
- BS EN 1339-1:2:1990 Metal Scaffolding - Part 1: Tubes - Section 1.2 Specification for aluminium tube
- BS 1139-2:2:2009 Metal Scaffolding - Part 2: Couplers - Section 2.2: Aluminium couplers and special couplers in steel - Requirements and test methods
- BS 2482:2009 Specification for timber scaffold boards
- BS EN 12811-1:2003 Temporary works equipment - Part 1: Scaffolds - Performance requirements and general design
- BS EN 12812:2008 Falsework - Performance Requirements and General Design
- BS EN 1991-1-1:2002 Eurocode 1: Actions on Structure - Part 1-1: General Actions - Densities, Self-weight, Imposed Loads for Buildings
- BS EN 1991-1-3:2003 Eurocode 1: Actions on Structure - Part 1-3: General Actions - Snow Actions
- BS EN 1991-1-4:2005 Eurocode 1: Actions on Structure - Part 1-4: General Actions - Wind Actions
- BS EN 1993-1-1:2005 Eurocode 3: Design of steel structures - Part 1-1: General rules and rules for buildings
- TG20-13 Design Guide - Technical Guidance on the use of BS EN 12811-1
- TG04-17 Anchorage Systems
- SG04-15 Preventing Falls in Scaffolding
- SG25-14 Access and Egress from Scaffolds
- CG06:09 Scaffold Design

LOAD BEARING COUPLERS MUST BE USED ON ALL THE RELATED COMPONENTS UNLESS OTHERWISE SHOWN / STATED

Unless stated otherwise genuine products / components are to be used to ensure that structural performance can be guaranteed.

No alteration in or which may effect the loading is to be made without reference to RDG Engineering Design Office.

Dimensions:
All dimensions are in mm and centre to centre unless otherwise stated.
Written dimensions will take precedence over scaled dimensions.

REV	DATE	DESCRIPTION OF ISSUE	OWN	SK	CHK	APP	REV
P1	28/09/18	Issued For Approval	AS	BK			
P1	11/09/18	Issued For Approval	AS	BK			



RDG ENGINEERING (TW) LTD
1st Floor, Derbyshire House, St Chads Street, London, WC1H 8AG, tel: 020 7036 1650
e-mail: design@rdgengineering.co.uk

PROJECT
KOKO, Camden

DRAWING TITLE
Preliminary Setting Out Plan

Clients DRAWING REFERENCE

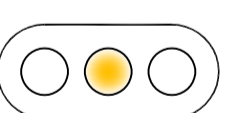
SCALE
1:100 & 1:50

RDG DRAWING CODE NO.
5194-153-AB-02-002

REV

P2

FOR APPROVAL



Bridged Over Doorways

Bridged Over Covers and Basements

Bridged Over Doorways

Bridged Over Covers and Basements