

TREES

TOTAL	CODE	SPECIES	SIZE	FORM
2	Amel	Amelanchier lamarekii	3.0-4.0m ht	Multistem
2	Mag	Magnolia kobus/ aculaneana	2.0-3.0m ht	Multistem
1	Pr1	Prunus cerasifera "Nigra"	3.0-4.0m ht	Multistem
10	Tr2	Tilia cordata	40-45cm girth	Standard
7	Tr1	Tilia intamedia "Pallida"	40-45cm girth	Standard

TOPIARY/ SHAPED SPECIMENS

TOTAL	CODE	SPECIES	SIZE	FORM
5	Carp1	Carpinus betulae	3.0m ht	Columns
7	Carp2	Carpinus betulae	2.0m clear stem	Boxed
8	Tax2	Taxus baccata	2.0-2.5m ht	Pyramid

"EVERGREEN" AND DECIDUOUS SHRUB LAYER

Evergreens
 Prunus laurocerasus, Ilex aquifolium, Rhododendron spp., Viburnum rhytidophyllum, Viburnum tinus, Viburnum davidii, Coloneaster salicifolius, Taxus baccata (shrub/ feathered)

Deciduous
 Acer palmatum, Amelanchier (smaller spec.), Buddleja, Chaenomeles, Cornus (florida, alternifolia), Corylus avellana, Crataegus (small), Euonymus alatus, Forsythia, Hydrangea (pan-ouleta, arborescens), Magnolia (kobus, stellata), Philadelphus, Rosa, Symphoricarpos, Syringa, Viburnum (opulus, bodnantense, lantana, plicatum)

HERBACEOUS AND LAVENDER BORDERS

Density: 5 plants per m²

YEW (TAXUS BACCATA) HEDGING

90-120cm size at 1.5 plants per metre run
 150-180cm size at 1.5 plants per metre run

OUTLINE SPECIFICATION

Plant Beds: 400mm depth topsoil
 Grass Areas: 150mm depth topsoil
 Additional 400mm depth of subsoil over areas of construction fill
 Remove objects greater than 75mm in size from the topsoil and cart away.

Provide an analysis of imported/ stockpiled topsoil with recommendations for making good any deficiencies. Provide details of the source and a 1Kg sample of imported topsoil for approval by the Landscape Architect.

TREES

Tree Inspection
 Trees to be selected by the Landscape Architect at the grower's nursery

Triple staking: 3No. 75mm diam. x 1800mm long stakes set equidistant around the tree rootball. Top of stake 800mm above ground level. Tree ties to each stake with 25mm wide neoprene straps and 300mm long plastic sleeves.

Oblique staking:
 Single 75mm diam. x 1800mm long stake set at 45 degrees in North East direction and fixed to stem with single spacer and 38mm wide neoprene strap

Single Staking
 Single 75mm diam. x 1800mm long stake fixed twice with neoprene straps and rubber spacers

Underground Guying
 Install 2 sets of timber collars, one above and one below the rootball.
 Timber collar: 4No. 100 x 25mm x 750mm long untreated softwood boards bolted together
 Prior to backfilling with topsoil, strap the collars together and tighten with 3mm multistrand wire. Provide grips to tension the wire. Anchor the lower collar into firm ground with 4No. 300mm long metal pins, ensuring the tree set vertical.

Root Preparation
 Trees to be rootballed for planting between November and March inclusive
 All trees to be container grown or containerised for planting between April and October inclusive.

SHRUB PLANTING
 Backfill 300 x 300 x 300mm deep plant pit with 1 part compost and 5 parts topsoil thoroughly mixed before backfilling.

MULCH
 50mm thick 35-75mm size bark mulch cover to all exposed topsoil within plant beds. 14% maximum wood content permitted. Provide a sample to the Landscape Architect prior to delivery.

GRASS AREAS
 A general pre-seeding fertiliser shall be applied to the soil between 3 and 7 days before laying turf or sowing seed and incorporated into the top 25mm of tith at a rate of 70gms/sq.m

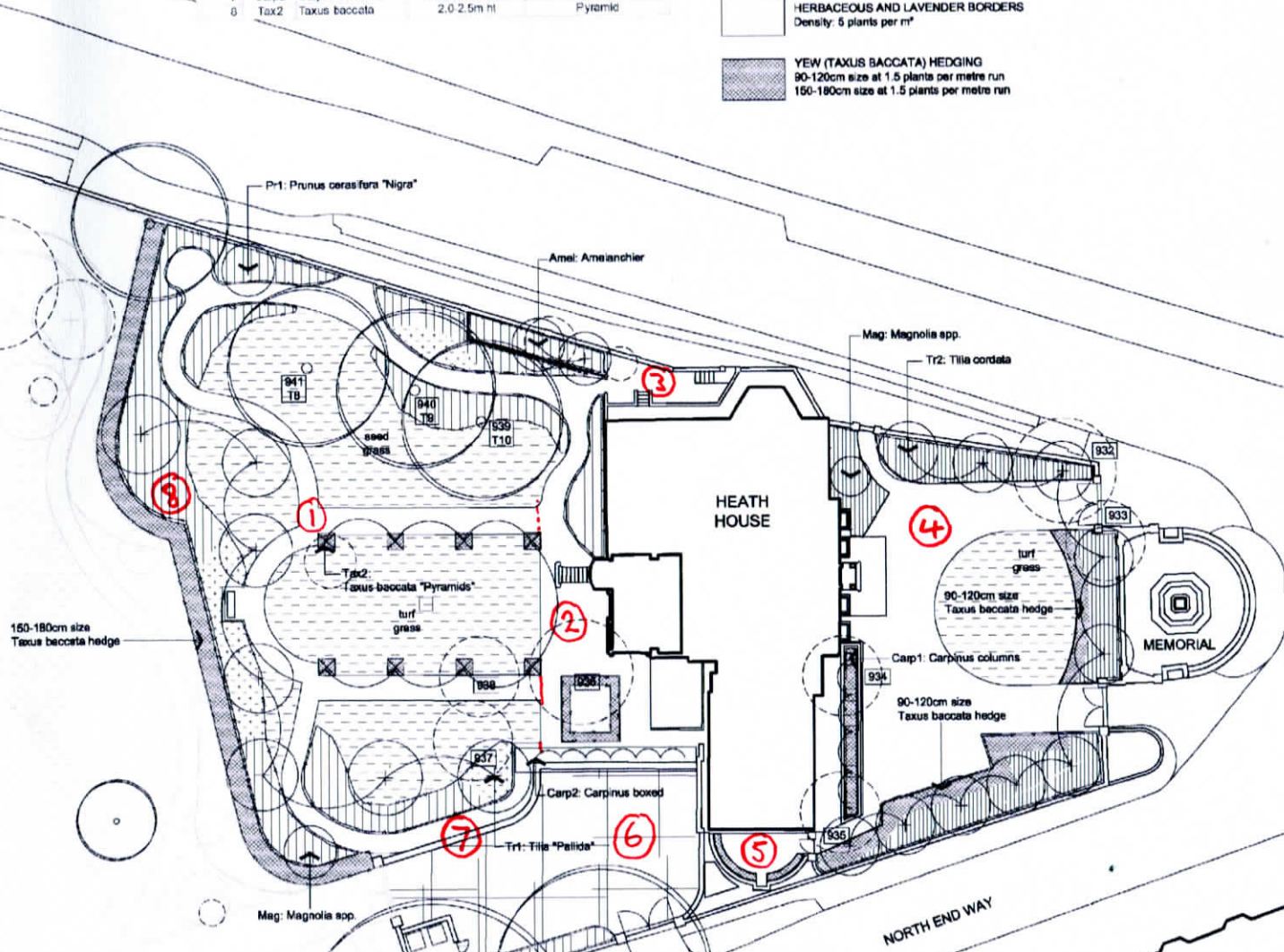
Seed Grass: Grade "A8" "Shade Tolerant", as supplied by British Seed Houses or similar, sown at a rate of 35 grams per sq.m

Turf Grass: Lay ornamental quality turf grass. Turves shall be in accordance with BS3669. "Recommendations for turf for general landscape purposes"

MAINTENANCE
 Defects Period for 52 weeks following Practical Completion.
 Allow for 26 maintenance visits for checking irrigation system, watering, cutting, weeding, pruning and collection of leaf litter.

PROTECTION OF EXISTING TREES
 Refer to Artech Consulting report

AD



Heath House, North End Way, London, NW3 7ET

Specifications for Hard Landscaping and Boundary Treatments

1. Path

Gravel within brick borders (permeable)

Brick: Ibstock West Hoathley 50/50 handmade multi and medium multi stock, on edge laid on suitable mortar bedding perpendicular to the length of path to provide 215mm border to Breedon Golden Amber Gravel (12mm to fines) on compacted Type 1 sub base minimum depth 150mm, by Breedon Special Aggregate 01332 694001.

2. Rear Terrace

Stone with brick edging and detail

Yorkstone: Random format, randomly laid reclaimed yorkstone from IBS Reclaim 01844 234450 or similar approved supplier. Joints filled with brushed dry pointing mix NOT pointed with wet mortar.

Brick edging and detail: Ibstock West Hoathley 50/50 handmade multi and medium multi stock, on edge laid at edges of terrace and beds on suitable mortar bedding perpendicular to.

3. Side Terrace

Stone

Yorkstone: Random format, randomly laid reclaimed yorkstone from IBS Reclaim 01844 234450 or similar approved supplier. Joints filled with brushed dry pointing mix NOT pointed with wet mortar.

4. Front Entrance court (permeable)

Bound gravel with stone surrounds

400mm wide reclaimed Yorkstone border and detail laid on suitable bedding framing panels of porous 18mm resin bound 'Harvest Crunch' gravel (by Oakleigh Manor, 08000231310 or similar approved supplier)

5. Kitchen Terrace (permeable)

Gravel within brick borders

Brick: Ibstock West Hoathley 50/50 handmade multi and medium multi stock, on edge laid on suitable mortar bedding to provide 215mm border to Breedon Golden Amber Gravel (12mm to fines) on compacted Type 1 sub base minimum depth 150mm, by Breedon Special Aggregate 01332 694001.

6. Shared entrance court (permeable)

Bound gravel with stone surrounds

400mm wide reclaimed Yorkstone border and detail laid on suitable bedding framing panels of porous 18mm resin bound 'Harvest Crunch' gravel (by Oakleigh Manor, 08000231310 or similar approved supplier)

7. Courtyard boundary wall

2.2m high 320mm wide wall to match existing perimeter wall. Constructed of Ibstock West Hoathley 50/50 handmade multi and medium multi stock. Laid with 8mm bed and perpends in English garden wall bond with hawkstone lime mortar with a brushed bucket handle joint.

8. Boundary fence

450mm high 320mm wide dwarf wall. Constructed of Ibstock West Hoathley 50/50 handmade multi and medium multi stock. Laid with 8mm bed and perpends in English garden wall bond with hawkstone lime mortar with a brushed bucket handle joint. 150mm thick bath stone coping weathered equally from centre line, 25mm overhang to each side. Traditionally seated 16mm square section black painted railings with finials generally simple point (26/2/949). At changes of direction or end of run use larger section post as appropriate with Urn finial 3/3/985

both by James Hoyle & sons (The Beehive Foundry, 48-50 Andrews Road, Cambridge Heath, London, E8 4RL 0207254 2335)