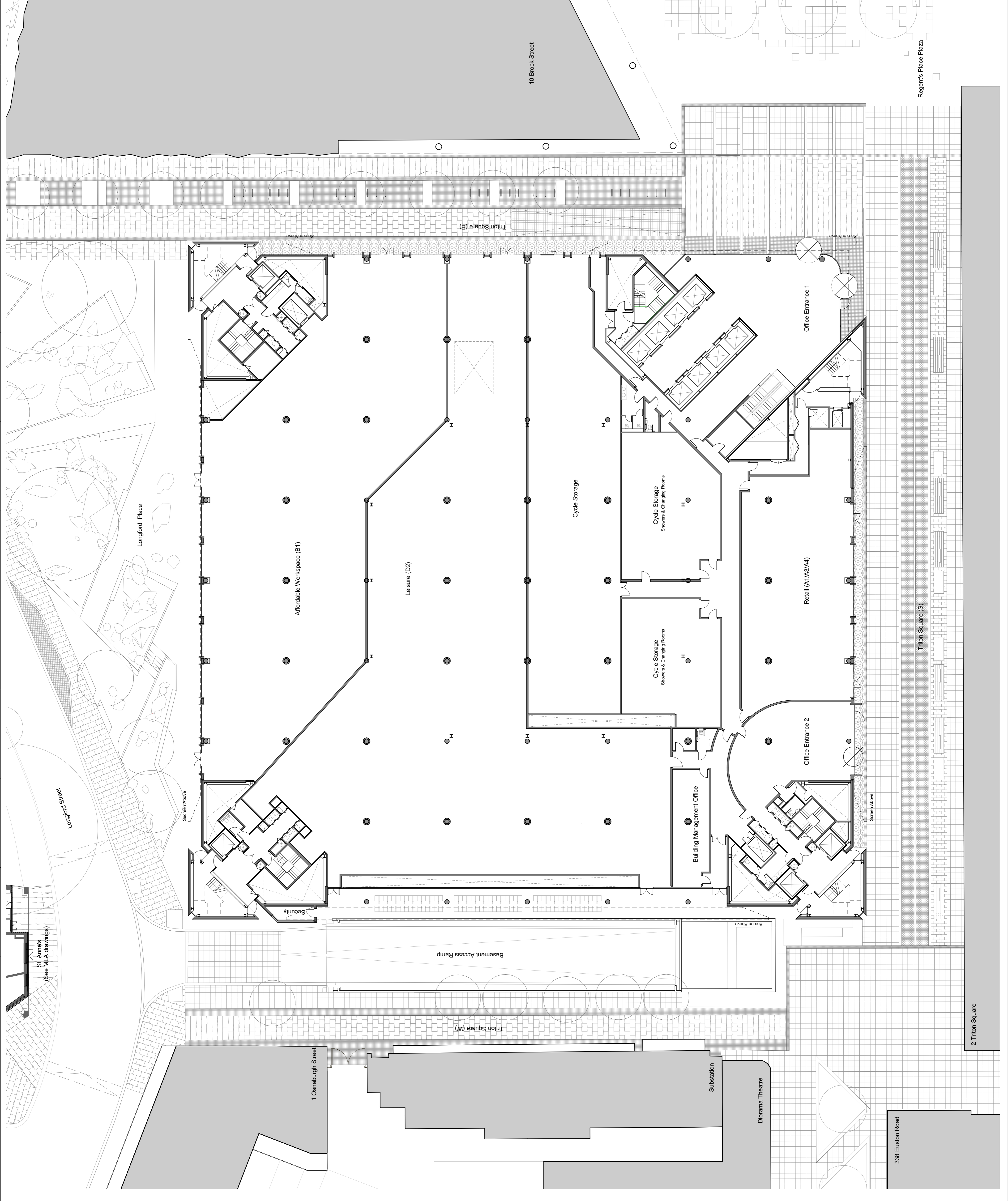
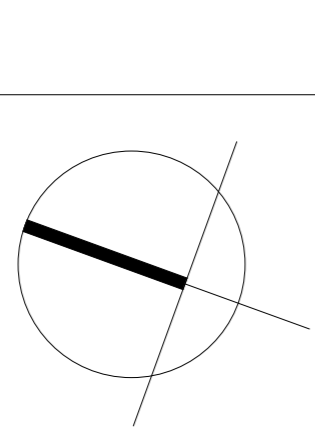
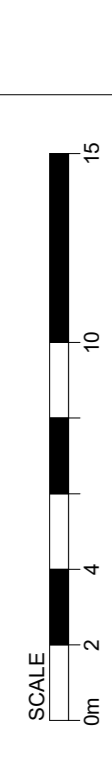


FIGURED DIMENSIONS ONLY TO BE USED

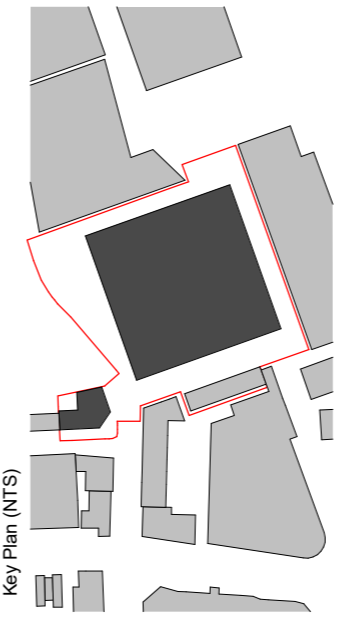
Safety, Health and Environmental Information

In addition to the hazards/risks normally associated with the types of work detailed on this drawing and noted in the designer risk assessments and health and safety plan, note the following:

- It is assumed that all works on this drawing will be carried out by a competent contractor working, where appropriate, to an approved method statement.
- Where applicable, significant residual risks are highlighted in the body of the drawing.



Issue	Date	Key Plan (NTS)
P04	09/10/18	Issued for Planning
P03	22/09/18	Issued for Planning
P02	10/04/18	Issued for Planning
P01	13/10/16	Issued for Planning



ARUP ASSOCIATES

8 Finsbury Street
London
W1T 4BU

tel: 020 7765 2525
fax: 020 7755 2561
email: info@arupassociates.com

Client
British Land Property Management Limited

Job Title
1 Triton Square and St. Anne's

Drawing Title
**1 Triton Square
General Arrangement Plan
Ground Floor
Proposed**

Scale of A1
1 : 200

Discipline
Architecture

Job No
246868

Drawing Status
Planning

Drawing No
246868-A_XX-GF-DR-AX-30020

Issue
P04