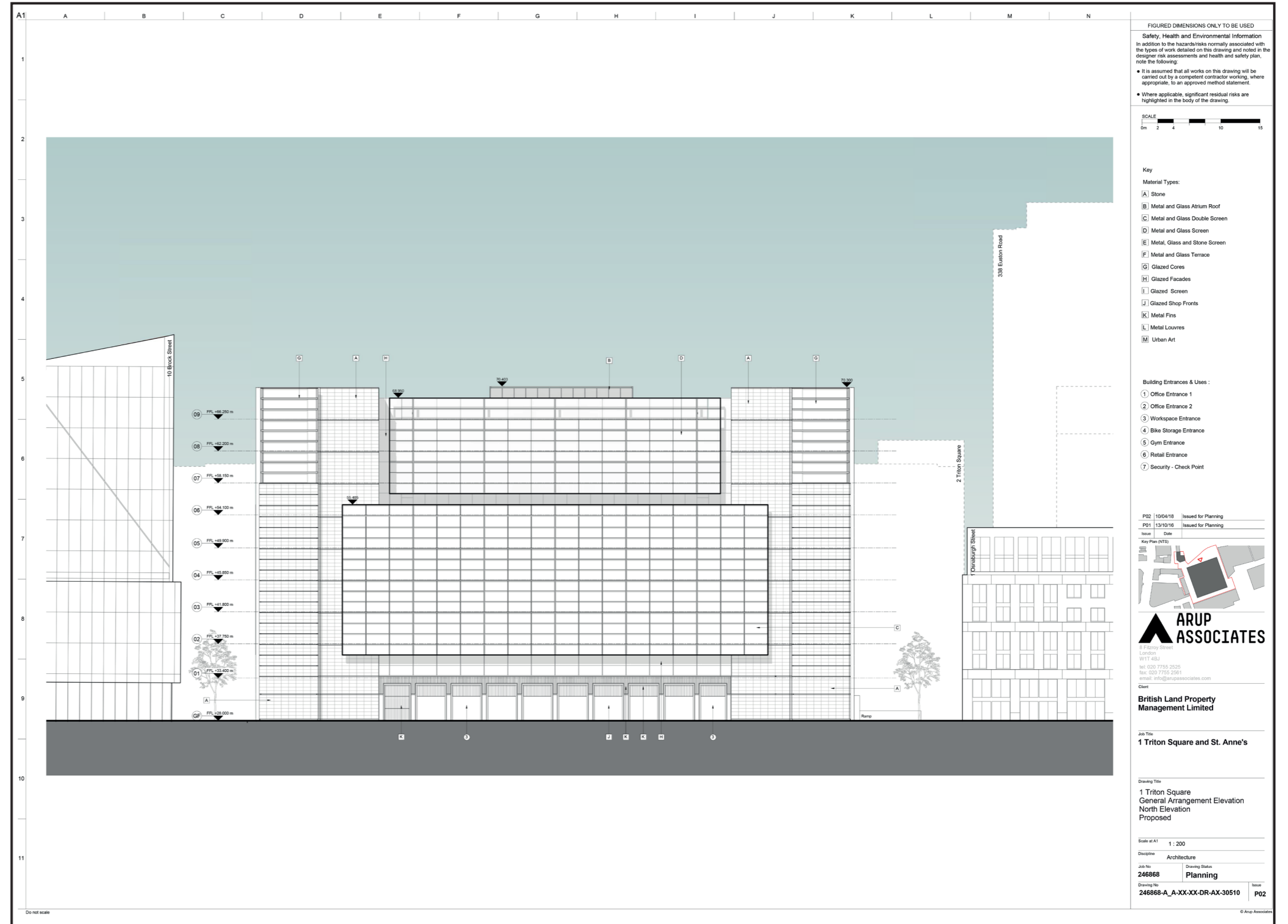


CONSENTED PLANNING DRAWING

246868-A_A-XX-XX-DR-AX-30510
North Elevation





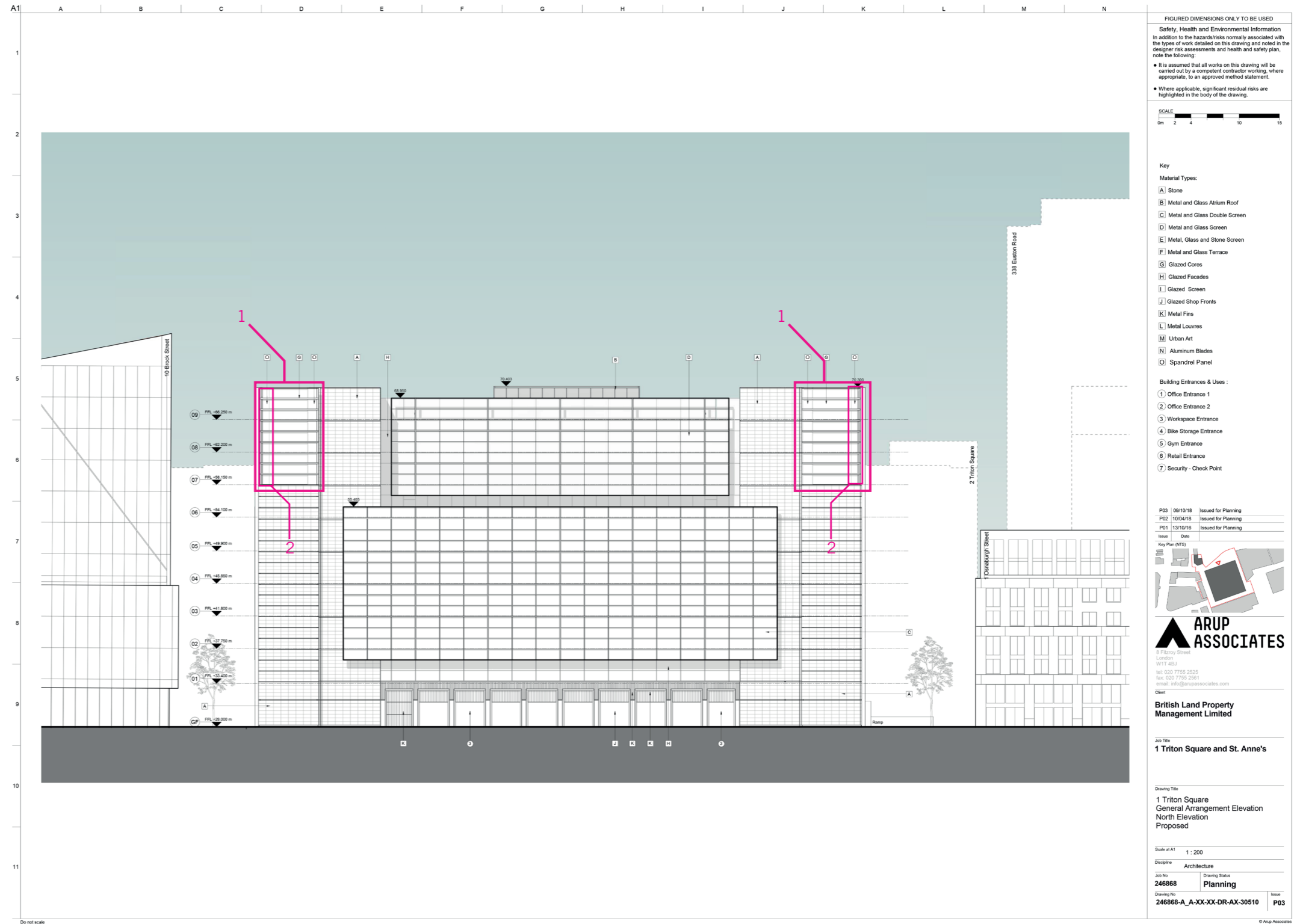
PROPOSED AMENDMENT DRAWING

246868-A_A-XX-XX-DR-AX-30510
North Elevation

Amendment

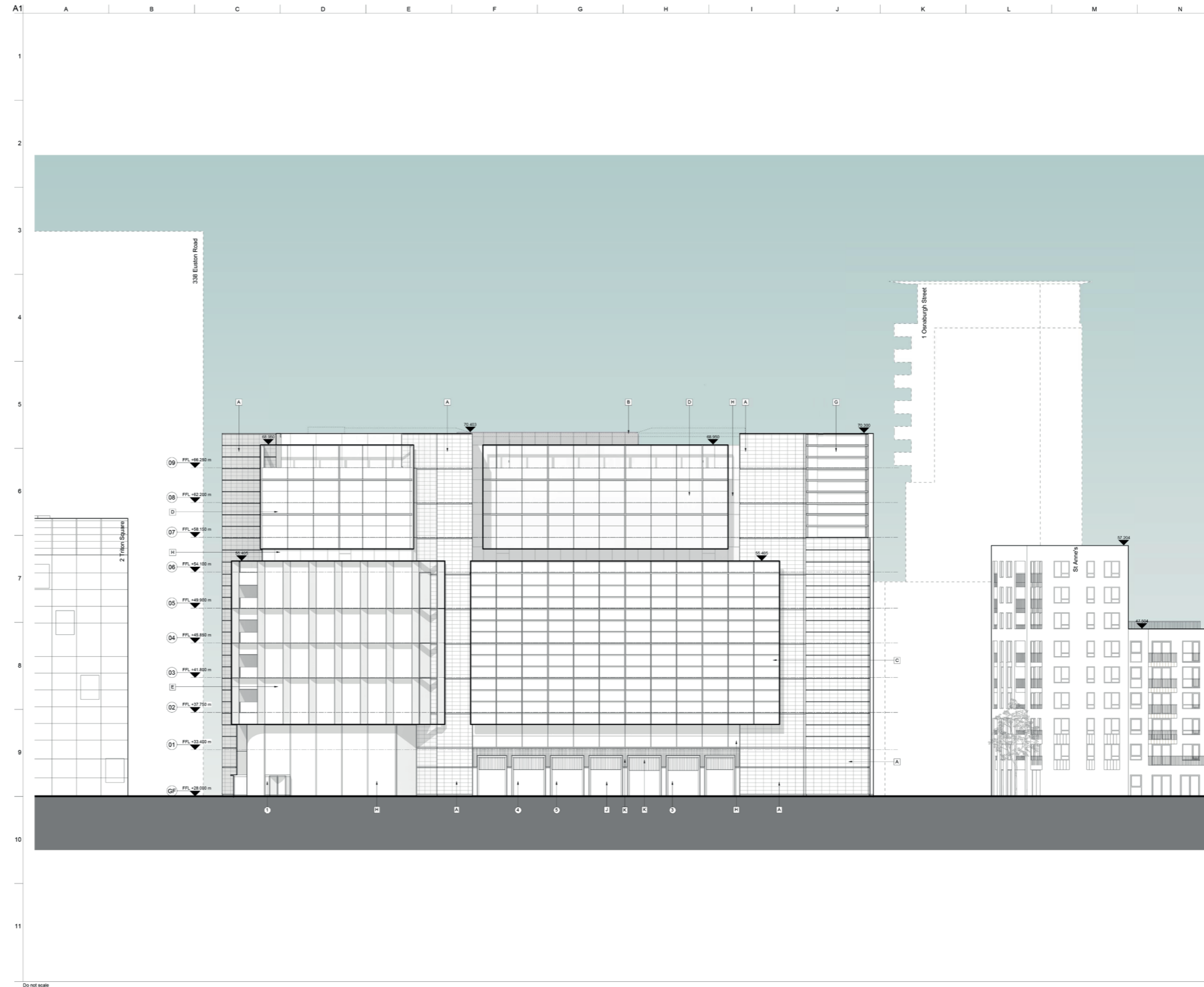
(1) A change in materials to the transoms at the top of cores from stone to anodised aluminium is proposed. Each transom is 7m wide and following design development deemed structurally unachievable given weight and aesthetic requirement for unobstructed panoramic glazing panels. This affects 6 of the 10 transoms at the top of each core. The remaining 4 are natural anodised aluminium as approved.

(2) Introduction of additional mullion to separate back painted glass spandrel panel from vision glazing - note spandrel panel hides steel column behind.



CONSENTED PLANNING DRAWING

246868-A_A-XX-XX-DR-AX-30520
East Elevation



FIGURED DIMENSIONS ONLY TO BE USED
Safety, Health and Environmental Information
In addition to the hazards/risks normally associated with the types of work detailed on this drawing and noted in the designer risk assessments and health and safety plan, note the following:
• It is assumed that all works on this drawing will be carried out by a competent contractor working, where appropriate, to an approved method statement.
• Where applicable, significant residual risks are highlighted in the body of the drawing.



- Key
- Material Types:
- A Stone
 - B Metal and Glass Atrium Roof
 - C Metal and Glass Double Screen
 - D Metal and Glass Screen
 - E Metal, Glass and Stone Screen
 - F Metal and Glass Terrace
 - G Glazed Cores
 - H Glazed Facades
 - I Glazed Screen
 - J Glazed Shop Fronts
 - K Metal Fins
 - L Metal Louvres
 - M Urban Art

- Building Entrances & Uses:
- 1 Office Entrance 1
 - 2 Office Entrance 2
 - 3 Workspace Entrance
 - 4 Bike Storage Entrance
 - 5 Gym Entrance
 - 6 Retail Entrance
 - 7 Security - Check Point

P02 10/04/18 Issued for Planning
P01 13/10/16 Issued for Planning



ARUP ASSOCIATES
8 Fitzroy Street
London
W1T 4BJ
Tel: 020 7755 2026
Fax: 020 7755 2001
email: info@arupassociates.com

Client
British Land Property Management Limited

Job Title
1 Triton Square and St. Anne's

Drawing Title
**1 Triton Square
General Arrangement Elevation
East Elevation
Proposed**

Scale of A1 1:200
Discipline Architecture
Job No. 246868
Drawing Status Planning
Drawing No. 246868-A_A-XX-XX-DR-AX-30520
Sheet P02