

PROPOSED FOUL WATER MANHOLE SCHEDULE

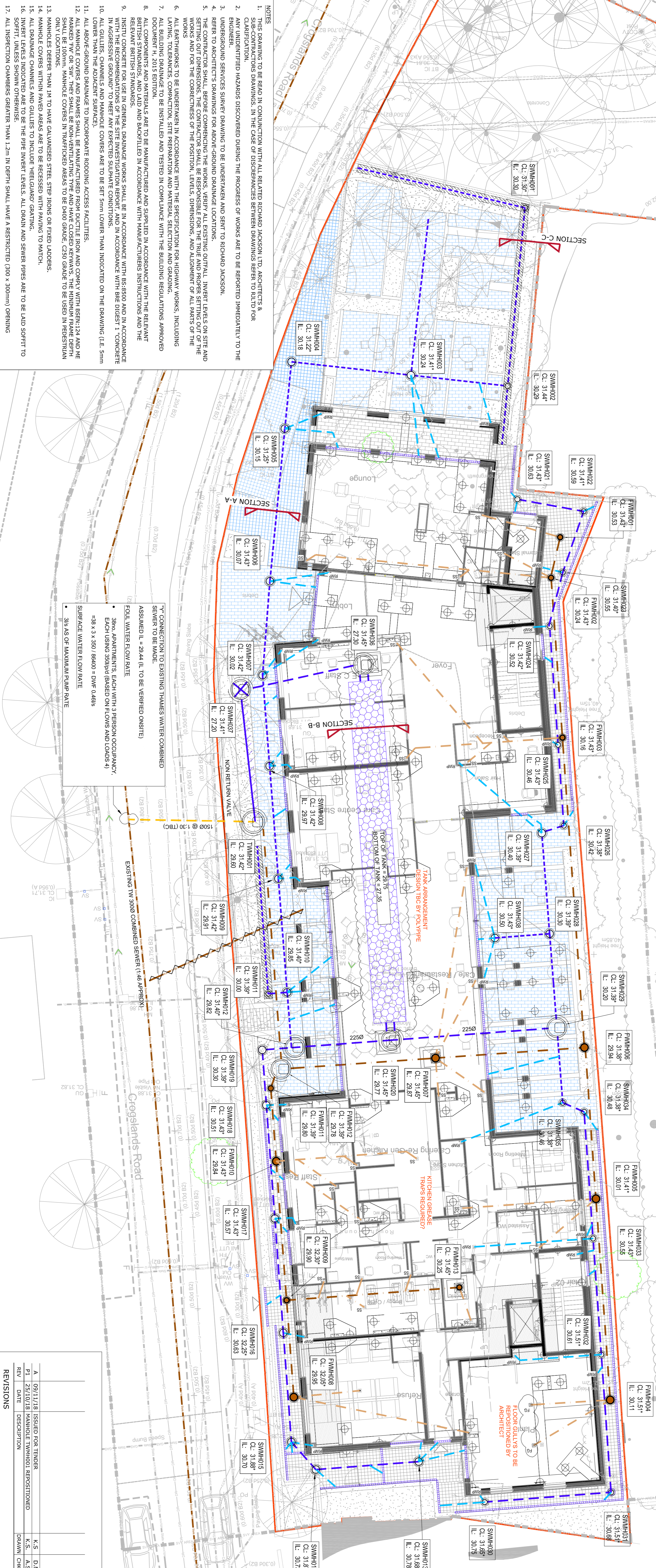
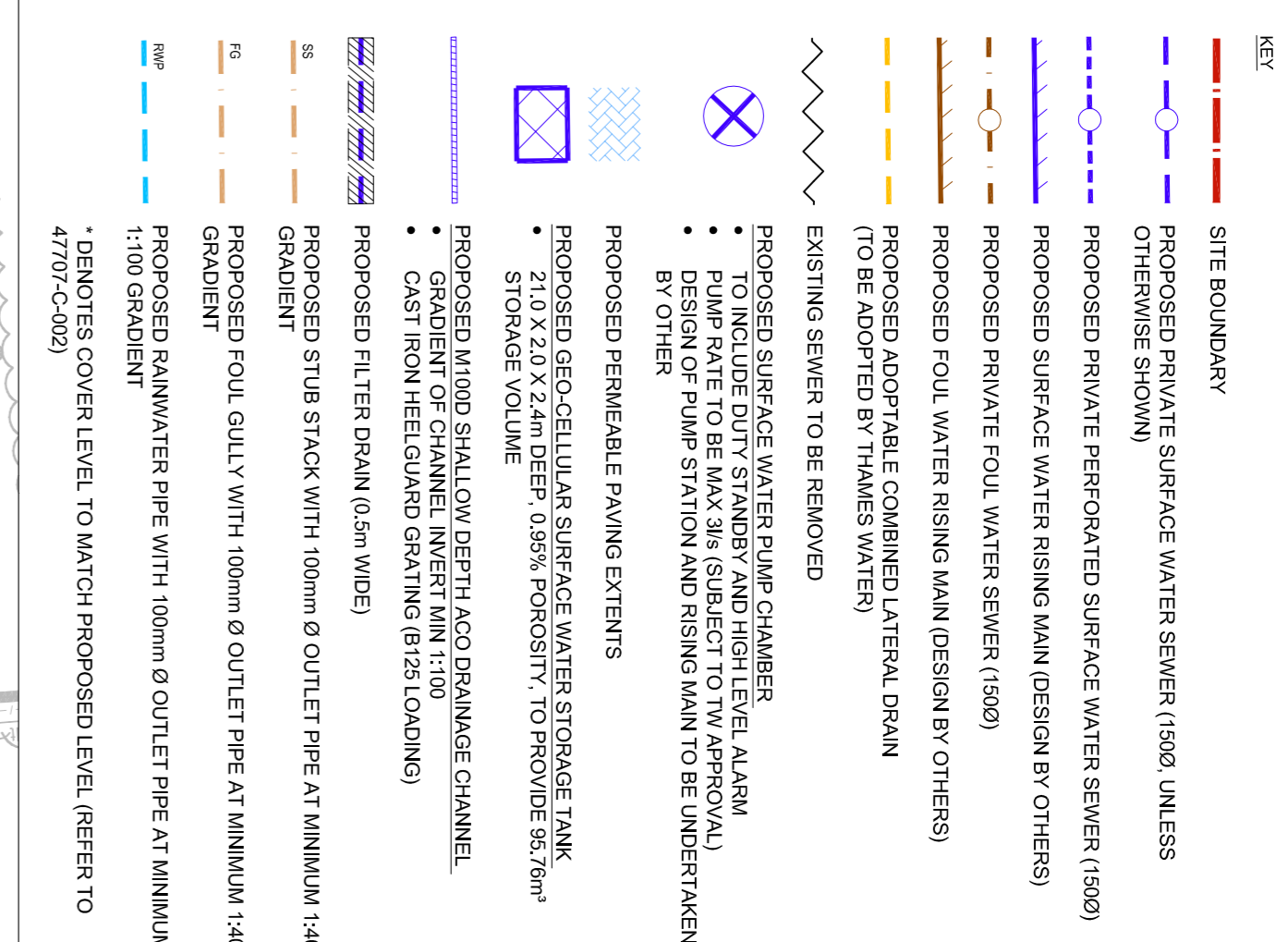
MH_REF	IL	CL	Man Hole Type	Man Hole size(mm)	Cover and Frame	Notes	Backdrop/ Catchpit
FWMH001	30.53	31.43*	PPIC	3150	B125, 600x600	-	-
FWMH002	30.24	31.43*	PPIC	4500	B125, 600x600	-	-
FWMH003	30.16	31.43*	PPIC	3150	B125, 600x600	RESTRICTED COVER	-
FWMH004	30.11	31.51*	PPIC	4500	B125, 600x600	RESTRICTED COVER	-
FWMH005	30.01	31.41*	PPIC	4500	B125, 600x600	RESTRICTED COVER	-
FWMH006	29.94	31.38*	PPIC	4500	B125, 600x600	RESTRICTED COVER	-
FWMH007	29.87	31.45*	PPIC	4500	B125, 600x600	RESTRICTED COVER, TRIPLE SEAL	-
FWMH008	29.95	32.05*	PPIC	4500	B125, 600x600	RESTRICTED COVER	-
FWMH009	29.90	32.30*	PPIC	3150	B125, 600x600	RESTRICTED COVER	-
FWMH010	29.84	31.43*	PPIC	4500	B125, 600x600	RESTRICTED COVER	-
FWMH011	29.80	31.39*	PPIC	3150	B125, 600x600	RESTRICTED COVER	-
FWMH012	29.78	31.39*	2	10500	B125, 600x600	RESTRICTED COVER	-
FWMH013	30.25	31.45*	PPIC	3150	B125, 600x600	TRIPLE SEAL	-

NOTE
FINAL UNDERGROUND SS/SVP/RWP LOCATIONS TO BE CONFIRMED WITH THE ARCHITECT

PROPOSED SURFACE WATER MANHOLE SCHEDULE

MH_REF	IL	CL	Man Hole Type	Man Hole size(mm)	Cover and Frame	Notes	Backdrop/ Catchpit
SWMH001	30.30	31.30*	PPIC	3150	B125, 600x600	-	-
SWMH002	30.29	31.44*	PPIC	3150	B125, 600x600	-	-
SWMH003	30.24	31.41*	PPIC	4500	B125, 600x600	-	-
SWMH004	30.18	31.22*	PPIC	4500	C250, 600x600	-	-
SWMH005	30.15	31.25*	PPIC	4500	C250, 600x600	-	-
SWMH006	30.07	31.43*	PPIC	4500	B125, 600x600	RESTRICTED COVER	-
SWMH007	30.02	31.42*	PPIC	4500	B125, 600x600	RESTRICTED COVER	-
SWMH008	29.97	31.42*	PPIC	4500	B125, 600x600	RESTRICTED COVER	-
SWMH009	29.91	31.42*	PPIC	4500	B125, 600x600	RESTRICTED COVER	-
SWMH010	29.85	31.40*	PPIC	3150	B125, 600x600	RESTRICTED COVER	-
SWMH011	30.00	31.39*	PPIC	3150	B125, 600x600	RESTRICTED COVER	-
SWMH012	29.82	31.40*	2	10500	B125, 600x600	RESTRICTED COVER	-
SWMH013	30.78	31.68*	PPIC	4500	B125, 600x600	-	-
SWMH014	30.73	31.87*	PPIC	4500	B125, 600x600	-	-
SWMH015	30.70	31.88*	PPIC	4500	B125, 600x600	-	-
SWMH016	30.63	32.25*	PPIC	4500	B125, 600x600	RESTRICTED COVER	-
SWMH017	30.57	31.43*	PPIC	4500	B125, 600x600	-	-
SWMH018	30.51	31.43*	PPIC	4500	B125, 600x600	-	-
SWMH019	30.30	31.39*	PPIC	4500	B125, 600x600	-	-
SWMH020	29.77	31.45*	2	10500	B125, 600x600	TRIPLE SEAL	-

MH_REF	IL	CL	Man Hole Type	Man Hole size(mm)	Cover and Frame	Notes	Backdrop/ Catchpit
SWMH021	30.63	31.43*	PPIC	3150	B125, 600x600	-	-
SWMH022	30.59	31.41*	PPIC	3150	B125, 600x600	-	-
SWMH023	30.55	31.40*	PPIC	3150	B125, 600x600	-	-
SWMH024	30.52	31.42*	PPIC	3150	B125, 600x600	-	-
SWMH025	30.46	31.43*	PPIC	3150	B125, 600x600	-	-
SWMH026	30.42	31.38*	PPIC	3150	B125, 600x600	-	-
SWMH027	30.40	31.39*	PPIC	4500	B125, 600x600	-	-
SWMH028	30.30	31.39*	PPIC	4500	B125, 600x600	-	-
SWMH029	30.20	31.39*	2	10500	B125, 600x600	-	-
SWMH030	30.75	31.65*	PPIC	3150	B125, 600x600	-	-
SWMH031	30.68	31.51*	PPIC	3150	B125, 600x600	-	-
SWMH032	30.61	31.51*	PPIC	3150	B125, 600x600	-	-
SWMH033	30.55	31.43*	PPIC	3150	B125, 600x600	-	-
SWMH034	30.46	31.38*	PPIC	3150	B125, 600x600	-	-
SWMH035	30.46	31.38*	PPIC	3150	B125, 600x600	-	-
SWMH036	27.30	31.45*	2	10500	B125, 600x600	TRIPLE SEAL	-
SWMH037	27.20	31.41*	2	10500	B125, 600x600	PUMP CHAMBER DESIGNED BY OTHERS 3/16 DISCHARGE	-
SWMH038	30.50	31.43*	PPIC	4500	B125, 600x600	DEMARCATION CHAMBER TO BE ADOPTED BY TV	-
SWMH039	29.60	31.42*	2	12000	B125, 600x600	DEMARCATION CHAMBER TO BE ADOPTED BY TV	-



NOTES

1. DRAWING TO BE READ IN CONJUNCTION WITH ALL RELATED RECORDS, JACKSON LTD ARCHITECTS & CLARIFICATION.
2. ANY UNIDENTIFIED HAZARDS DISCOVERED DURING THE PROGRESS OF WORKS ARE TO BE REPORTED IMMEDIATELY TO THE ENGINEER.
3. UNDERGROUND SERVICES SHOWN DRAWING TO BE UNDERTAKEN AND SENT TO RICHARD JACKSON.
4. REFER TO ARCHITECT'S DRAWINGS FOR ABOVE-GROUND DRAINAGE LOCATIONS.
5. ALL DIMENSIONS ARE TO FACE UNLESS OTHERWISE STATED. THE RESPONSIBILITY FOR THE CORRECT POSITION, LEVELS, DIMENSIONS, AND ALIGNMENT OF ALL PARTS OF THE WORKS.
6. ALL EXISTING WORKS TO BE UNDERTAKEN IN ACCORDANCE WITH THE SPECIFICATION FOR HIGHWAY WORKS, INCLUDING ALL RELEVANT STANDARDS, AND TO BE MANUFACTURED AND SUPPLIED IN ACCORDANCE WITH THE RELEVANT BRITISH STANDARDS AND MATERIALS ARE TO BE MANUFACTURED AND SUPPLIED IN ACCORDANCE WITH THE RELEVANT BRITISH STANDARDS.
7. ALL COMPONENTS AND MATERIALS ARE TO BE MANUFACTURED AND SUPPLIED IN ACCORDANCE WITH THE RELEVANT BRITISH STANDARDS.
8. ALL COMPONENTS AND MATERIALS ARE TO BE MANUFACTURED AND SUPPLIED IN ACCORDANCE WITH THE RELEVANT BRITISH STANDARDS.
9. ALL COMPONENTS AND MATERIALS ARE TO BE MANUFACTURED AND SUPPLIED IN ACCORDANCE WITH THE RELEVANT BRITISH STANDARDS.
10. ALL GULLIES, CHANNELS AND MANHOLE COVERS ARE TO BE SET 5mm LOWER THAN INDICATED ON THE DRAWING (I.E. 5mm LOWER THAN THE ADJACENT SURFACE).
11. ALL ABOVE-GROUND DRAINAGE TO INCORPORATE ROOFTOP ACCESS FACILITIES.
12. ALL MANHOLE COVERS AND FRAMES SHALL BE MANUFACTURED FROM DUCTILE IRON AND COMPLY WITH BS EN 124 AND BE SHALL BE 100mm MANHOLE COVERS IN TRAFFICED AREAS TO BE D400 GRADE, C250 GRADE TO BE USED IN PEDESTRIAN ONLY LOCATIONS.
13. MANHOLES DEEPER THAN 1M TO HAVE GALVANISED STEEL STEPS OR FIXED LADDERS.
14. MANHOLE COVERS WITH PAVED AREAS TO BE RECESSED WITH PAVING TO MATCH.
15. ALL DRAINAGE CHANNELS AND GULLIES TO INCLUDE HELIX GUARD GRATING.
16. INVERT LEVELS INDICATED ARE TO BE THE PIPE INVERT LEVELS. ALL DRAIN AND SEWER PIPES ARE TO BE LAID SCOFF-TO SCOFF-TO WITH 1% FALL.
17. ALL INSPECTION CHAMBERS GREATER THAN 1.2m IN DEPTH SHALL HAVE A RESTRICTED (200 x 300mm) OPENING.

ASSUMED IL = 29.44 (IL TO BE VERIFIED ON SITE)
 * CONNECTION TO EXISTING THAMES WATER COMBINED SEWER TO BE MADE
 FLOOR WATER LOW RATE
 38m² APARTMENTS EACH WITH 3 PERSON OCCUPANCY, EACH USING SINKS (BASED ON 10NS AND 10NS2)
 SURFACE WATER FLOW RATE
 3l/s AS OF MAXIMUM PUMP RATE

Client: GALLIFORD TRY PARTNERSHIPS
 Title: SURFACE AND FOUL WATER DRAINAGE STRATEGY
 Project: CHARLIE RATCHFORD EXTRA CARE

Drawn: J.S.
 Checked: A.L.S.
 Date: 18/10/2018
 Scale: 1:125@A1

Revised: A
 47707-C-001
 Drawing No.

Richard Jackson Ltd