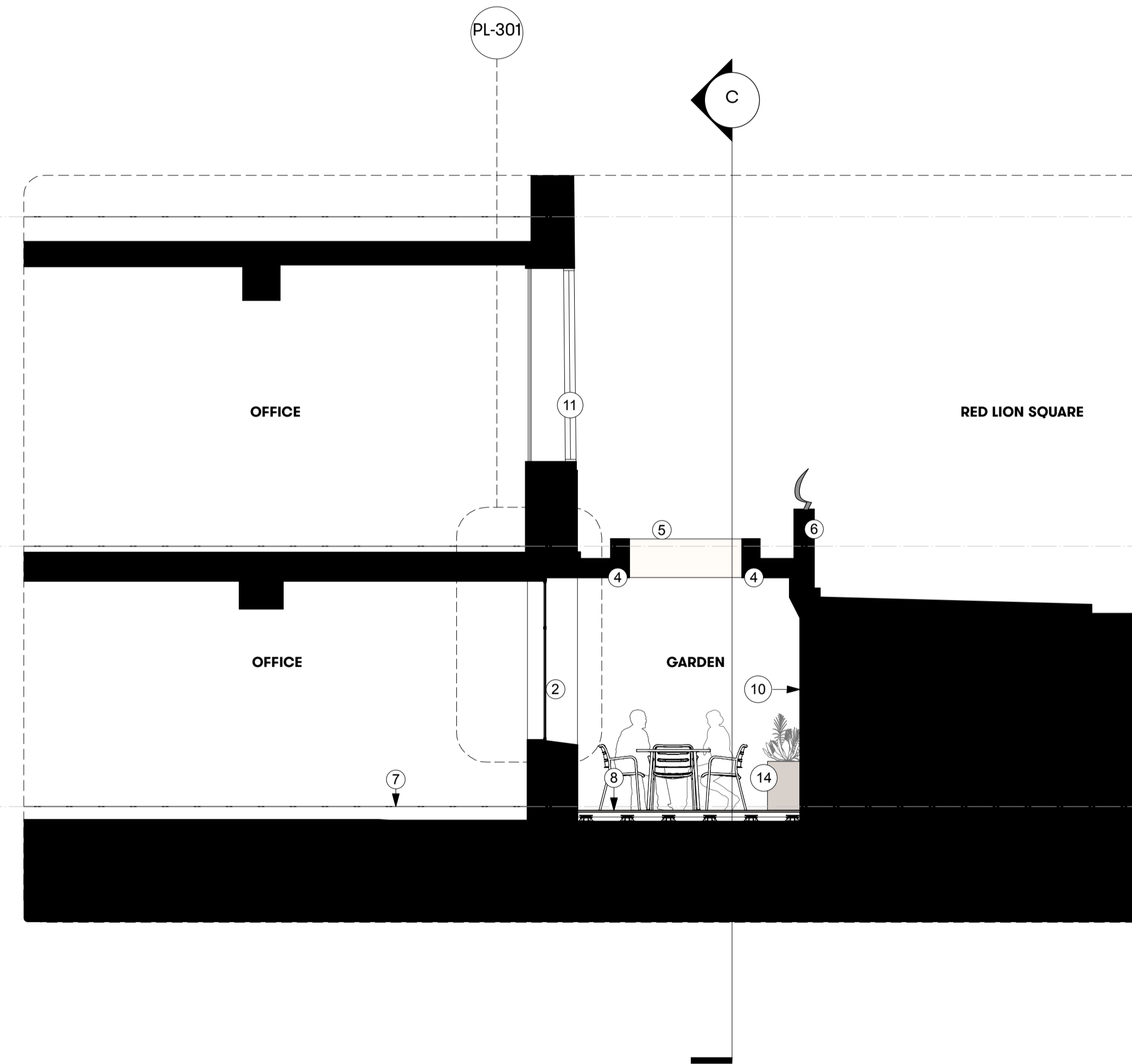
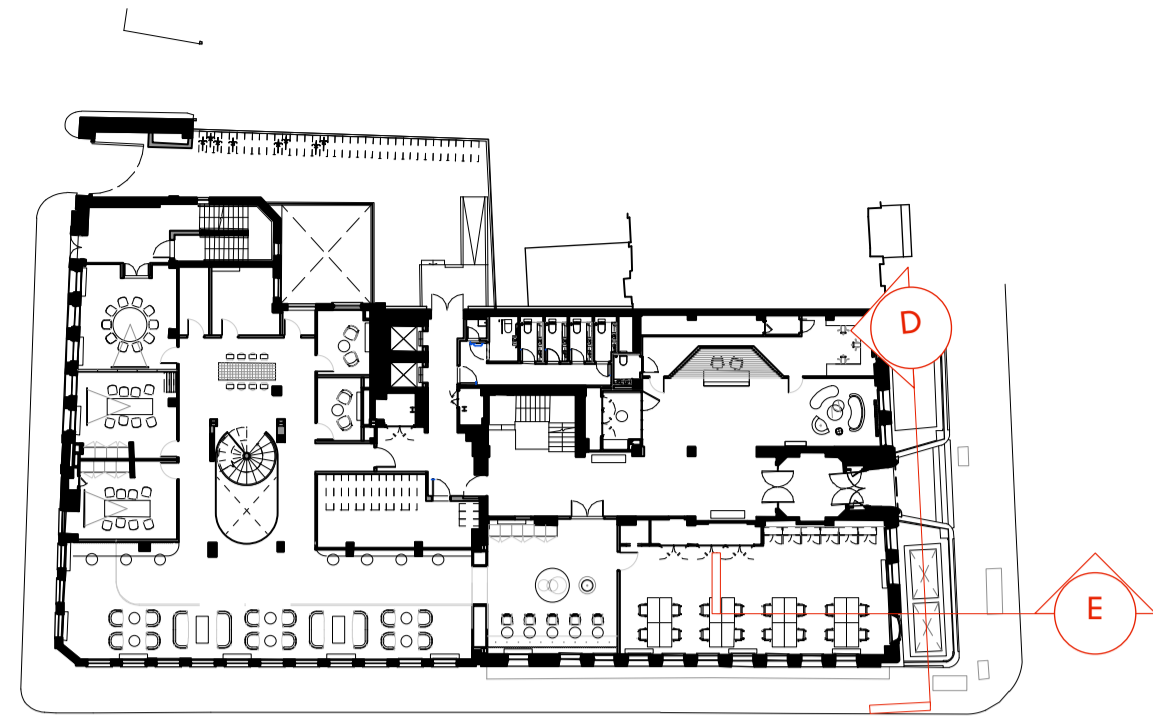


**KEY**



**GENERAL NOTES**

All dimensions to be checked on site prior to commencement of any works, and/or preparation of any shop drawings.

Sizes of and dimensions to any structural elements are indicative only. See structural engineers drawings for actual sizes / dimensions.

Sizes of and dimensions to any service elements are indicative only. See service engineers drawings for actual sizes and dimensions.

This drawing to be read in conjunction with all other Architect's drawings, specifications and other Consultants' information.

All proprietary systems shown on this drawing are to be installed strictly in accordance with the Manufacturers/Suppliers recommended details.

Any discrepancies between information shown on this drawing and any other contract information or manufacturers/suppliers recommendations is to be brought to the attention of the Architect

DO NOT SCALE FROM THIS DRAWING.

**NOTES**

- ① Main Entrance - original timber doors
- ② New black metal framed double glazed window
- ③ New black metal framed, double glazed door
- ④ Existing support structure to 'lid' made good
- ⑤ Open void between lower ground floor and street level
- ⑥ Perimeter wall to lightwell with original cast iron railings
- ⑦ Raised access floor
- ⑧ New composite timber decking to create level floor
- ⑨ Yellow faience cladding
- ⑩ Painted render wall
- ⑪ Existing black painted metal framed windows
- ⑫ Indicative air handling unit and associated ductwork
- ⑬ New ductwork penetration and grill to office space under existing pavement light
- ⑭ Furniture and planters indicative only

P1 Planning Issue 12.11.18

REVISION DATE

**Lightwell Details  
PROPOSED SECTIONS**

SCALE 1:50 @ A1 (1:100 @ A3)

DWG No. SUM\_PL-110 REVISION P1

DATE Aug. 2018 DRAWN BY VC

DRAWING STATUS PLANNING

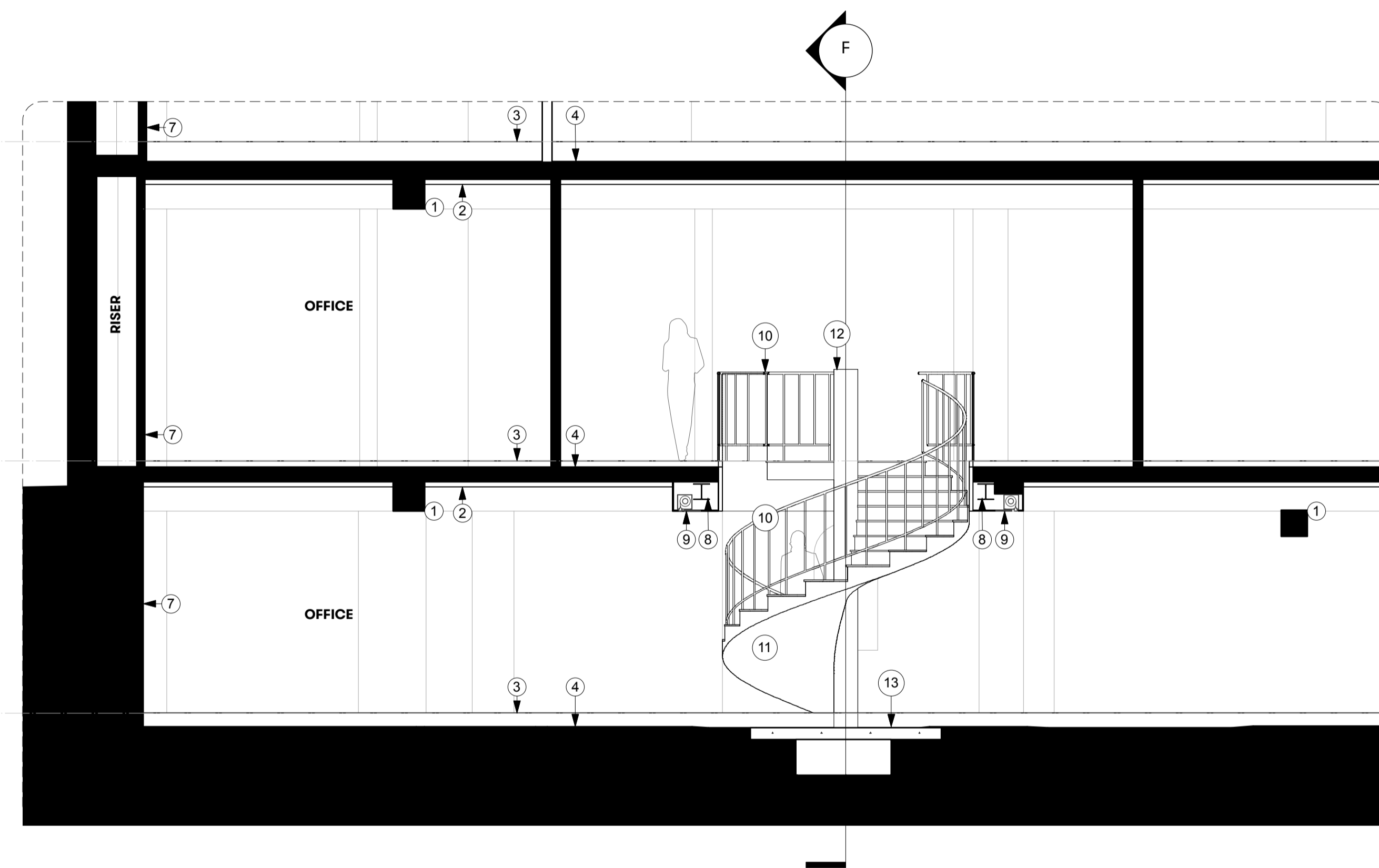
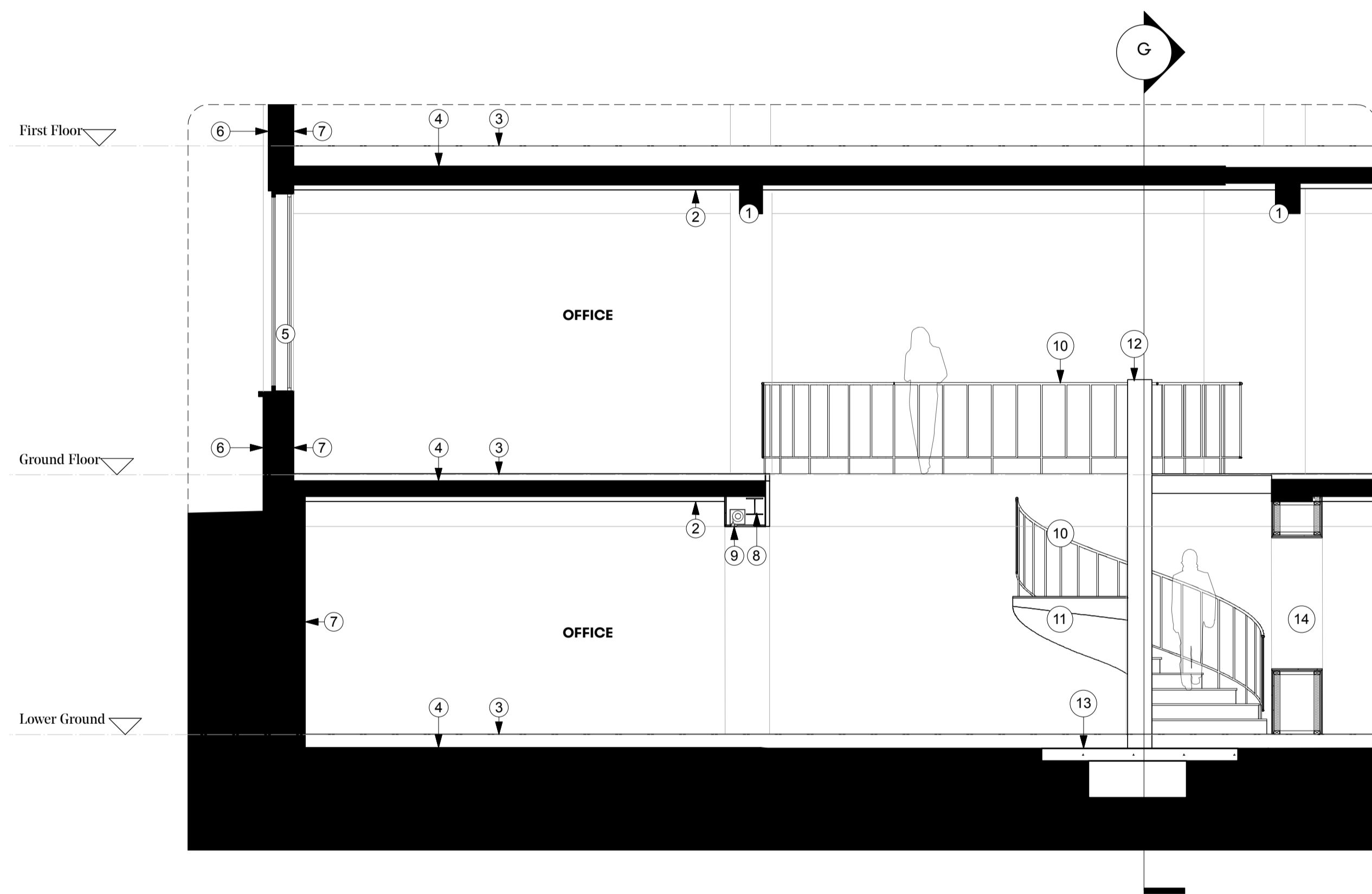
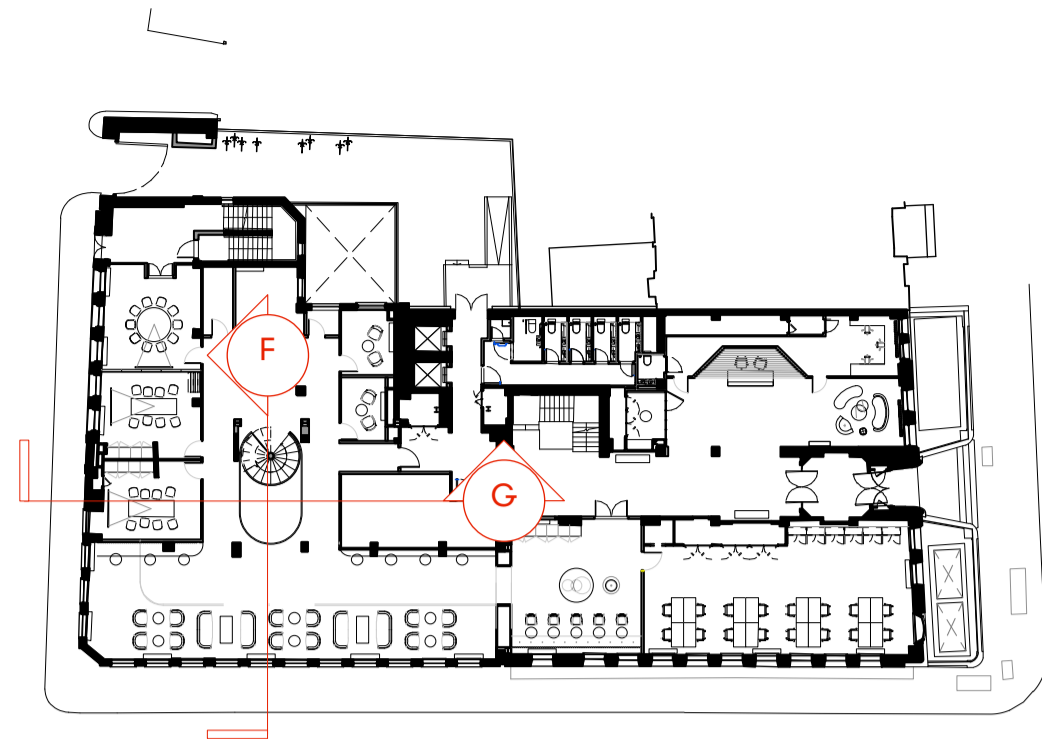
1 Sectional Elevation D - Through Lightwell looking at main facade  
Scale 1:50 at A1

2 Sectional Elevation E - Through Lightwell  
Scale 1:50 at A1

**Summit  
House**



**KEY**



**GENERAL NOTES**

All dimensions to be checked on site prior to commencement of any works, and/or preparation of any shop drawings.

Sizes of and dimensions to any structural elements are indicative only. See structural engineers drawings for actual sizes / dimensions.

Sizes of and dimensions to any service elements are indicative only. See service engineers drawings for actual sizes and dimensions.

This drawing to be read in conjunction with all other Architect's drawings, specifications and other Consultants' information.

All proprietary systems shown on this drawing are to be installed strictly in accordance with the Manufacturers/Suppliers recommended details.

Any discrepancies between information shown on this drawing and any other contract information or manufacturers/suppliers recommendations is to be brought to the attention of the Architect

DO NOT SCALE FROM THIS DRAWING.

**NOTES**

- ① Structural downstand beams, painted
- ② Plasterboard lining to ceiling, painting
- ③ Raised access floor
- ④ Concrete slab
- ⑤ Black painted metal framed windows
- ⑥ Yellow faience cladding
- ⑦ Plasterboard lined walls, painted
- ⑧ New steel structure to support opening
- ⑨ New fire curtain concealed in plasterboard bulkhead
- ⑩ Round section metal guarding and balustrade
- ⑪ Spiral staircase with steel structure
- ⑫ Metal central support pole
- ⑬ New slab and pad foundation to SE details
- ⑭ Plasterboard partitioning to box out existing structure and form new opening

P1 Planning Issue 12.11.18

REVISION DATE

**Stairwell Details**

**PROPOSED SECTIONS**

SCALE 1:50 @ A1 (1:100 @ A3)

DWG No.	SUM_PL-115	REVISION	P1
---------	------------	----------	----

DATE	Oct. 2018	DRAWN BY	VC
------	-----------	----------	----

DRAWING STATUS  
**PLANNING**

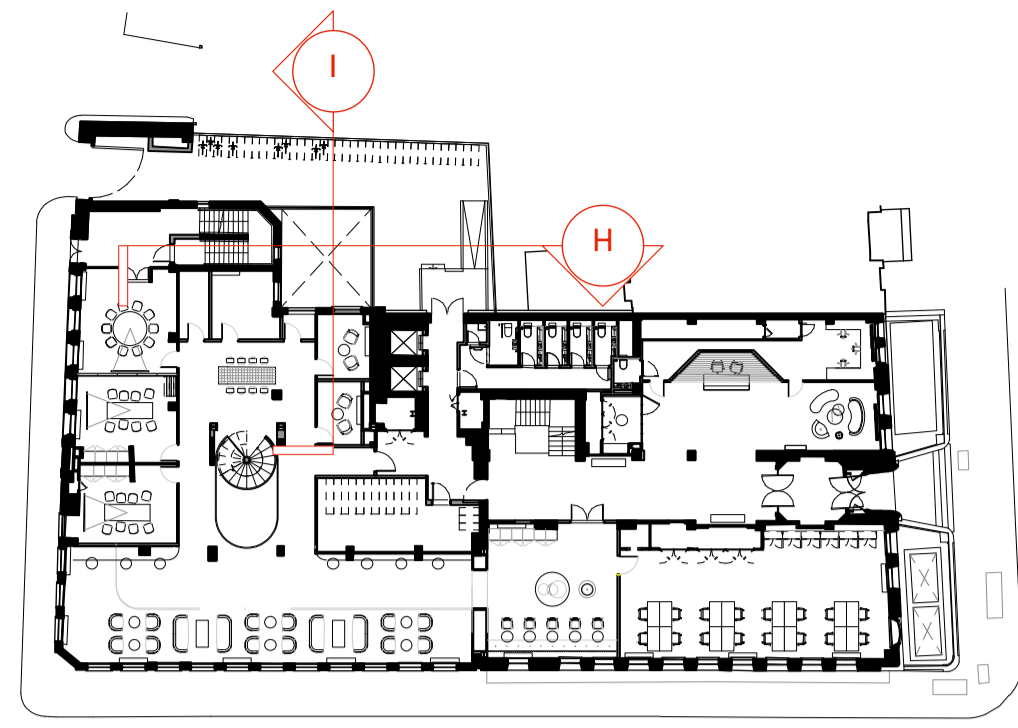
1 Sectional Elevation F - Stairwell  
Scale 1:50 at A1

2 Sectional Elevation G - Stairwell  
Scale 1:50 at A1

**Summit  
House**



**KEY**



**GENERAL NOTES**

All dimensions to be checked on site prior to commencement of any works, and/or preparation of any shop drawings.

Sizes of and dimensions to any structural elements are indicative only. See structural engineers drawings for actual sizes / dimensions.

Sizes of and dimensions to any service elements are indicative only. See service engineers drawings for actual sizes and dimensions.

This drawing to be read in conjunction with all other Architect's drawings, specifications and other Consultants' information.

All proprietary systems shown on this drawing are to be installed strictly in accordance with the Manufacturers/Suppliers recommended details.

Any discrepancies between information shown on this drawing and any other contract information or manufacturers/suppliers recommendations is to be brought to the attention of the Architect

DO NOT SCALE FROM THIS DRAWING.

**NOTES**

- ① Structural downstand beams, painted
- ② Plasterboard lining to ceiling, painted
- ③ Raised access floor with new floor finish
- ④ Concrete slab
- ⑤ Black painted metal framed windows
- ⑥ Red brick facade
- ⑦ Plasterboard lined walls, painted
- ⑧ White painted render to facade
- ⑨ Black metal framed glazed entrance door
- ⑩ Concrete ramp with black metal balustrade
- ⑪ Concrete stairs with black metal balustrade
- ⑫ Black painted metal fencing and anti-climb guard
- ⑬ Asphalt finish to courtyard
- ⑭ New black metal framed window to match adjacent existing window
- ⑮ Black metal framed curtain walling with black back painted glass
- ⑯ Black metal framed bi-folding glass doors
- ⑰ Terracotta floor tiles to external garden
- ⑱ External masonry wall, finished internally with painted plasterboard and externally with terracotta wall tiles to match floor
- ⑲ Black metal handrail and guarding
- ⑳ Black metal vertical cycle racks

P1 Planning Issue 12.11.18

REVISION DATE

**Courtyard Sections H and I  
PROPOSED SECTIONS**

SCALE 1:50 @ A1 (1:100 @ A3)

DWG No. SUM\_PL-120 REVISION P1

DATE Oct. 2018 DRAWN BY VC

DRAWING STATUS PLANNING

1 Sectional Elevation H - Courtyard and Lightwell Garden  
Scale 1:50 at A1

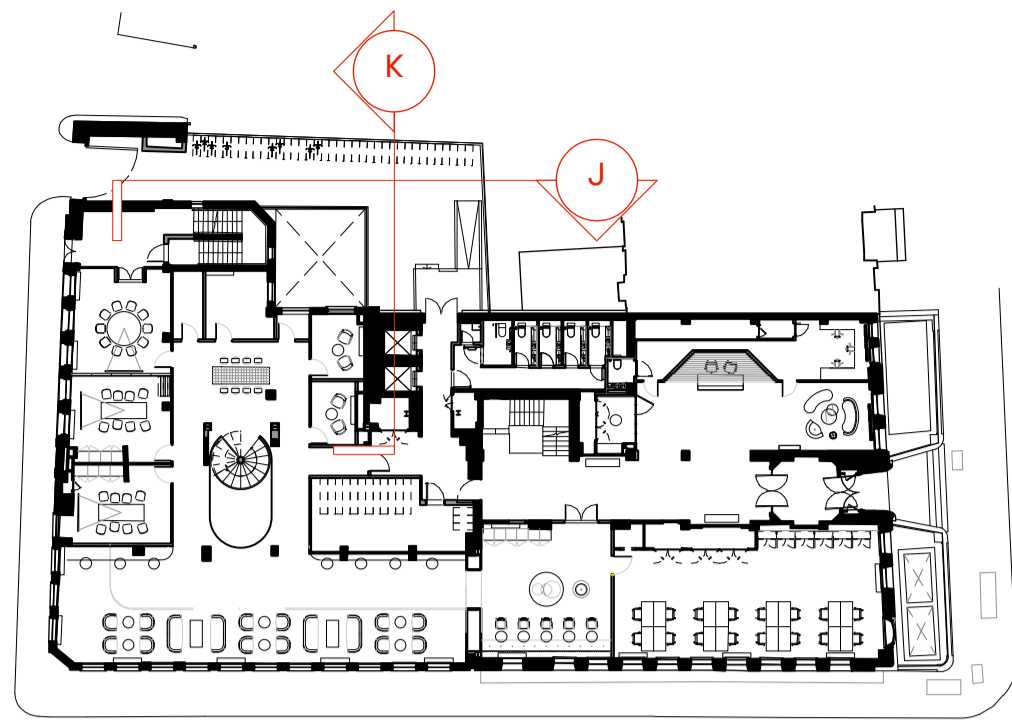
2 Sectional Elevation I - Courtyard and Lightwell Garden  
Scale 1:50 at A1

**Summit  
House**





**KEY**



**GENERAL NOTES**

All dimensions to be checked on site prior to commencement of any works, and/or preparation of any shop drawings.

Sizes of and dimensions to any structural elements are indicative only. See structural engineers drawings for actual sizes / dimensions.

Sizes of and dimensions to any service elements are indicative only. See service engineers drawings for actual sizes and dimensions.

This drawing to be read in conjunction with all other Architect's drawings, specifications and other Consultants' information.

All proprietary systems shown on this drawing are to be installed strictly in accordance with the Manufacturers/Suppliers recommended details.

Any discrepancies between information shown on this drawing and any other contract information or manufacturers/suppliers recommendations is to be brought to the attention of the Architect

DO NOT SCALE FROM THIS DRAWING.

**NOTES**

- ① Structural downstand beams, painted
- ② Plasterboard lining to ceiling, painted
- ③ Raised access floor with new floor finish
- ④ Concrete slab
- ⑤ Black painted metal framed windows
- ⑥ Red brick facade
- ⑦ Plasterboard lined walls, painted
- ⑧ White painted render to facade
- ⑨ Black metal framed glazed entrance door
- ⑩ Concrete ramp with black metal balustrade
- ⑪ Concrete stairs with black metal balustrade
- ⑫ Black painted metal fencing and anti-climb guard
- ⑬ Asphalt finish to courtyard
- ⑭ New black metal framed window to match adjacent existing window
- ⑮ Black metal framed curtain walling with black back painted glass
- ⑯ Black metal framed bi-folding glass doors
- ⑰ Terracota floor tiles to external garden
- ⑱ External masonry wall, finished internally with painted plasterboard and externally with terracota wall tiles to match floor
- ⑲ Black metal handrail and guarding
- ⑳ Black metal vertical cycle racks

P1 Planning Issue 12.11.18

REVISION DATE

**Courtyard Sections J and K  
PROPOSED SECTIONS**

SCALE 1:50 @ A1 (1:100 @ A3)

DWG No. SUM\_PL-121 REVISION P1

DATE Oct. 2018 DRAWN BY VC

DRAWING STATUS PLANNING

1 Sectional Elevation J - Courtyard and Lightwell Garden  
Scale 1:50 at A1

2 Sectional Elevation K - Courtyard and Lightwell Garden  
Scale 1:50 at A1

**Summit  
House**



**GENERAL NOTES**

All dimensions to be checked on site prior to commencement of any works, and/or preparation of any shop drawings.

Sizes of and dimensions to any structural elements are indicative only. See structural engineers drawings for actual sizes / dimensions.

Sizes of and dimensions to any service elements are indicative only. See service engineers drawings for actual sizes and dimensions.

This drawing to be read in conjunction with all other Architect's drawings, specifications and other Consultants' information.

All proprietary systems shown on this drawing are to be installed strictly in accordance with the Manufacturers/Suppliers recommended details.

Any discrepancies between information shown on this drawing and any other contract information or manufacturers/suppliers recommendations is to be brought to the attention of the Architect

DO NOT SCALE FROM THIS DRAWING.

**NOTES**



P1 Planning Issue 12.11.18

REVISION DATE

**North Elevation  
PROPOSED ELEVATION**

SCALE 1:100 @ A1 (1:200 @ A3)

DWG No. SUM\_PL-201 REVISION P1

DATE Aug. 2018 DRAWN BY VC

DRAWING STATUS PLANNING

**Summit  
House**



**GENERAL NOTES**

All dimensions to be checked on site prior to commencement of any works, and/or preparation of any shop drawings.

Sizes of and dimensions to any structural elements are indicative only. See structural engineers drawings for actual sizes / dimensions.

Sizes of and dimensions to any service elements are indicative only. See service engineers drawings for actual sizes and dimensions.

This drawing to be read in conjunction with all other Architect's drawings, specifications and other Consultants' information.

All proprietary systems shown on this drawing are to be installed strictly in accordance with the Manufacturers/Suppliers recommended details.

Any discrepancies between information shown on this drawing and any other contract information or manufacturers/suppliers recommendations is to be brought to the attention of the Architect

DO NOT SCALE FROM THIS DRAWING.

**NOTES**



P1 Planning Issue 12.11.18

REVISION DATE

**East Elevation  
PROPOSED ELEVATION**

SCALE 1:100 @ A1 (1:200 @ A3)

DWG No. SUM\_PL-202 REVISION P1

DATE Aug. 2018 DRAWN BY VC

DRAWING STATUS PLANNING

**Summit  
House**



**GENERAL NOTES**

All dimensions to be checked on site prior to commencement of any works, and/or preparation of any shop drawings.

Sizes of and dimensions to any structural elements are indicative only. See structural engineers drawings for actual sizes / dimensions.

Sizes of and dimensions to any service elements are indicative only. See service engineers drawings for actual sizes and dimensions.

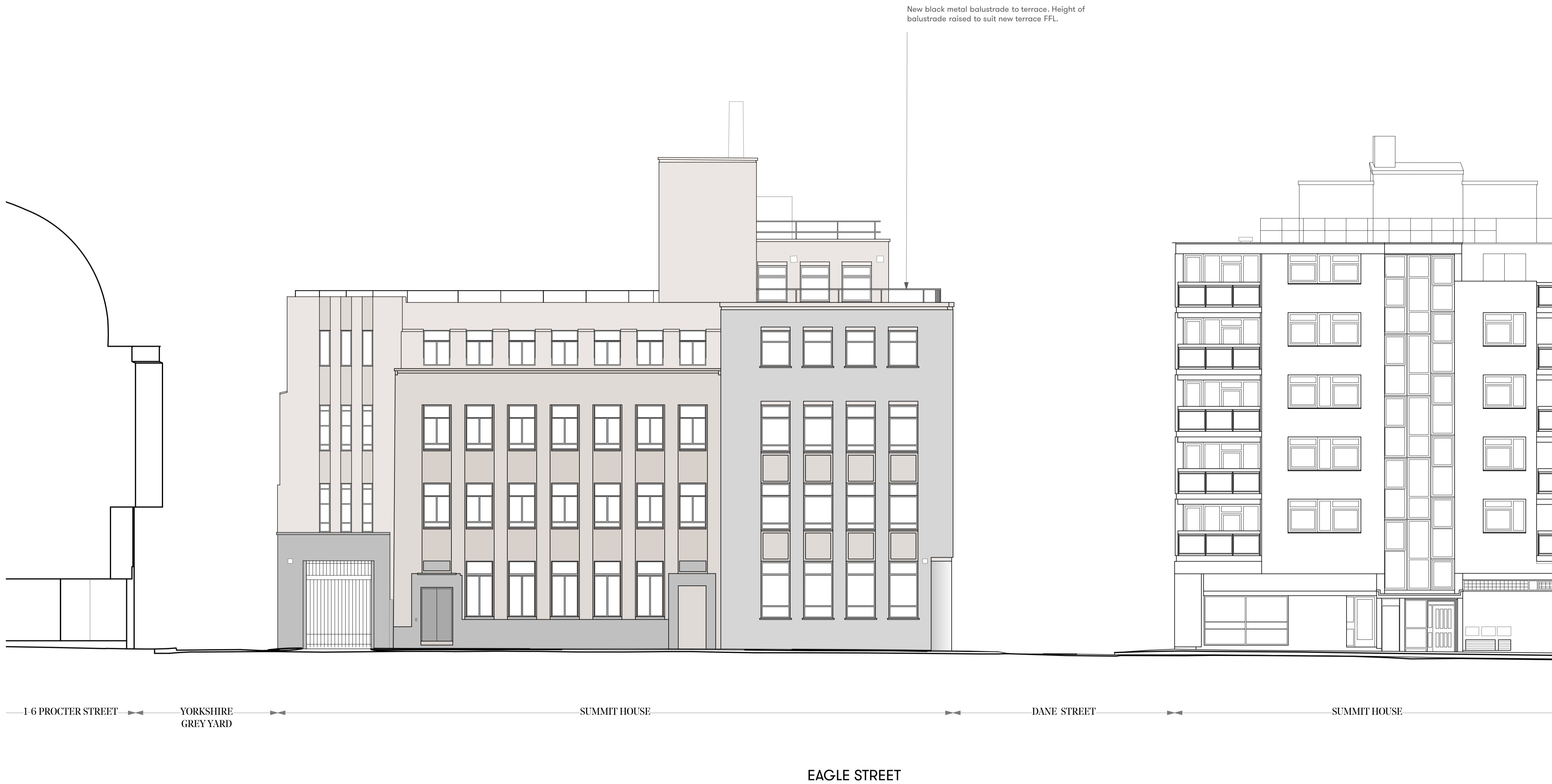
This drawing to be read in conjunction with all other Architect's drawings, specifications and other Consultants' information.

All proprietary systems shown on this drawing are to be installed strictly in accordance with the Manufacturers/Suppliers recommended details.

Any discrepancies between information shown on this drawing and any other contract information or manufacturers/suppliers recommendations is to be brought to the attention of the Architect

DO NOT SCALE FROM THIS DRAWING.

**NOTES**



P1    Planning Issue    12.11.18

REVISION    DATE

**South Elevation**

**PROPOSED ELEVATION**

SCALE    1:100 @ A1    (1:200 @ A3)

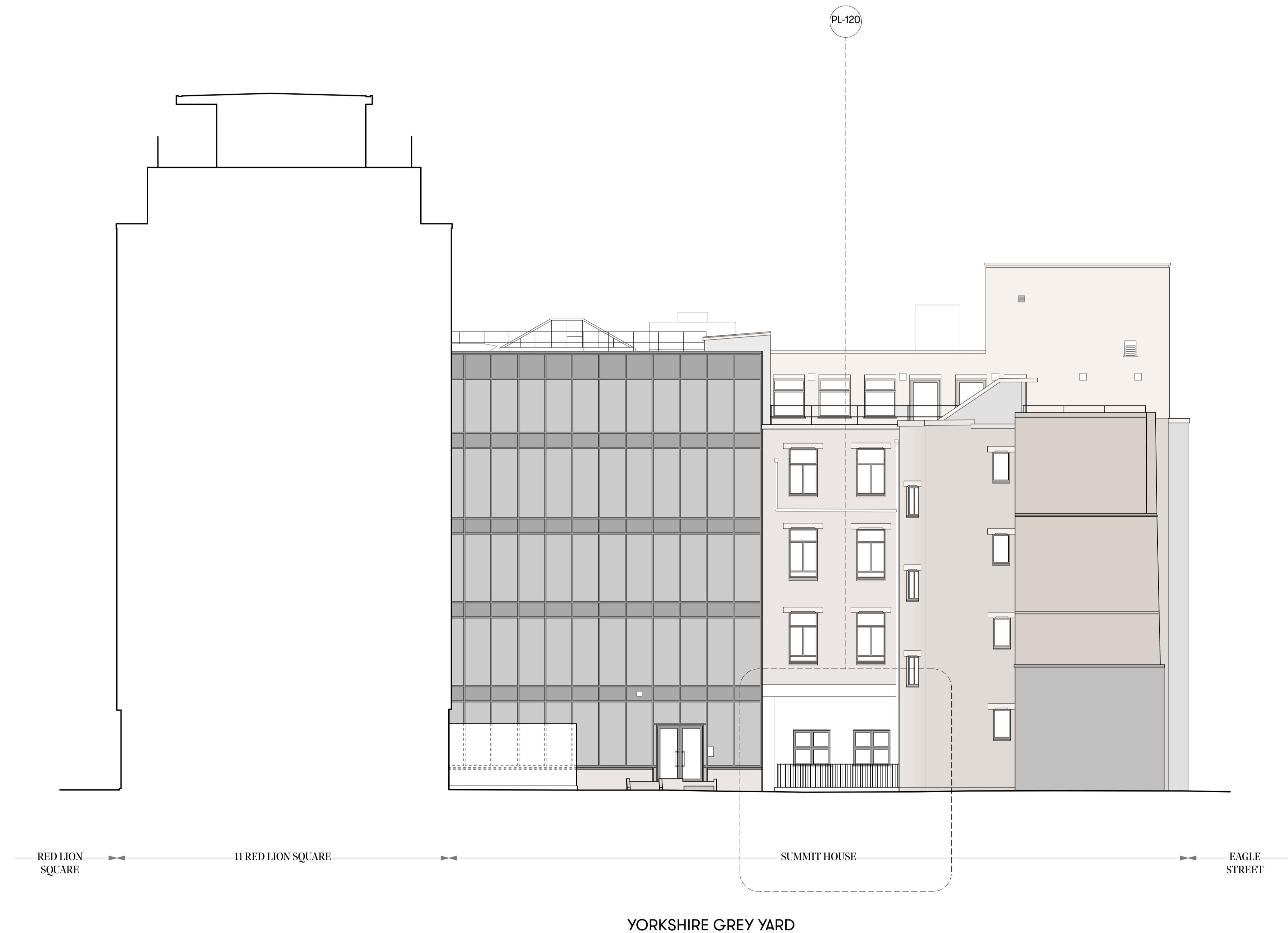
DWG No.    SUM\_PL-203    REVISION    P1

DATE    Aug. 2018    DRAWN BY    VC

DRAWING STATUS    PLANNING

**Summit House**





**GENERAL NOTES**

All dimensions to be checked on site prior to commencement of any works, and/or preparation of any shop drawings.

Sizes of and dimensions to any structural elements are indicative only. See structural engineers drawings for actual sizes / dimensions.

Sizes of and dimensions to any service elements are indicative only. See service engineers drawings for actual sizes and dimensions.

This drawing to be read in conjunction with all other Architect's drawings, specifications and other Consultants' information.

All proprietary systems shown on this drawing are to be installed strictly in accordance with the Manufacturers/Suppliers recommended details.

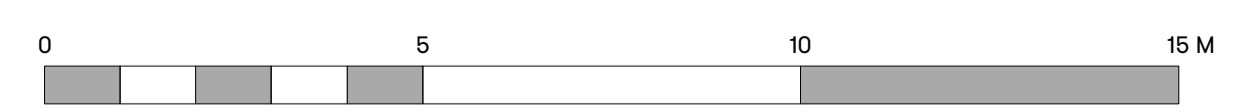
Any discrepancies between information shown on this drawing and any other contract information or manufacturers/suppliers recommendations is to be brought to the attention of the Architect

DO NOT SCALE FROM THIS DRAWING.

**NOTES**

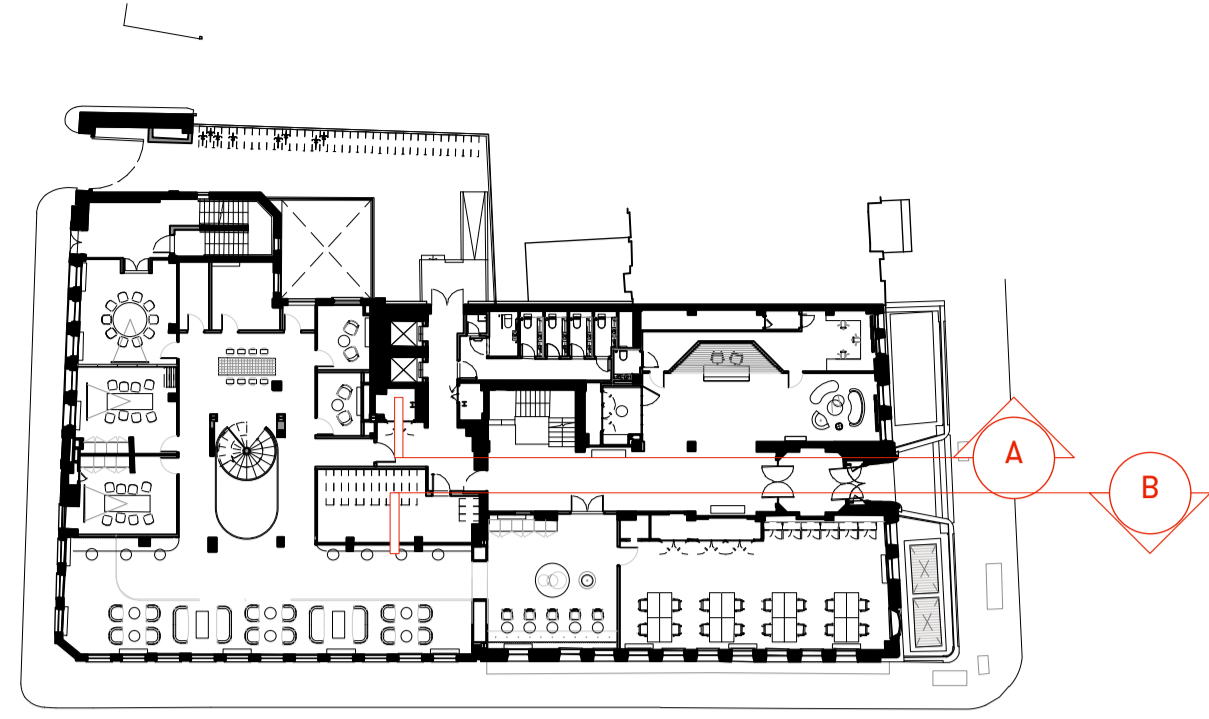
P1	Planning Issue	12.11.18
REVISION		DATE
<b>West Elevation PROPOSED ELEVATION</b>		
SCALE	1:100 @ A1	(1:200 @ A3)
DWG No.	SUM_PL-204	REVISION P1
DATE	Aug. 2018	DRAWN BY VC
DRAWING STATUS	PLANNING	

# Summit House





**KEY**



**GENERAL NOTES**

All dimensions to be checked on site prior to commencement of any works, and/or preparation of any shop drawings.

Sizes of and dimensions to any structural elements are indicative only. See structural engineers drawings for actual sizes / dimensions.

Sizes of and dimensions to any service elements are indicative only. See service engineers drawings for actual sizes and dimensions.

This drawing to be read in conjunction with all other Architect's drawings, specifications and other Consultants' information.

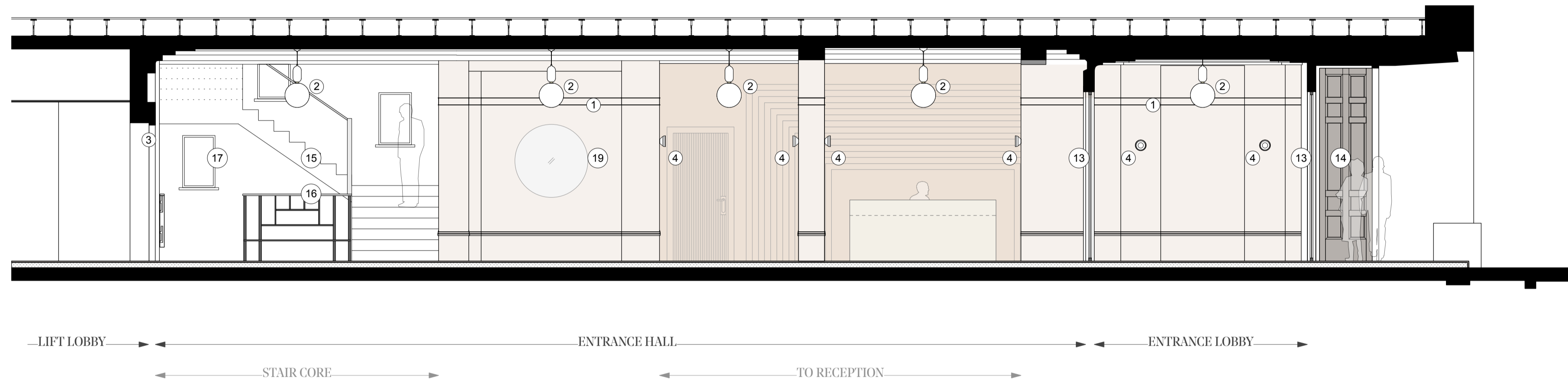
All proprietary systems shown on this drawing are to be installed strictly in accordance with the Manufacturers/Suppliers recommended details.

Any discrepancies between information shown on this drawing and any other contract information or manufacturers/suppliers recommendations is to be brought to the attention of the Architect

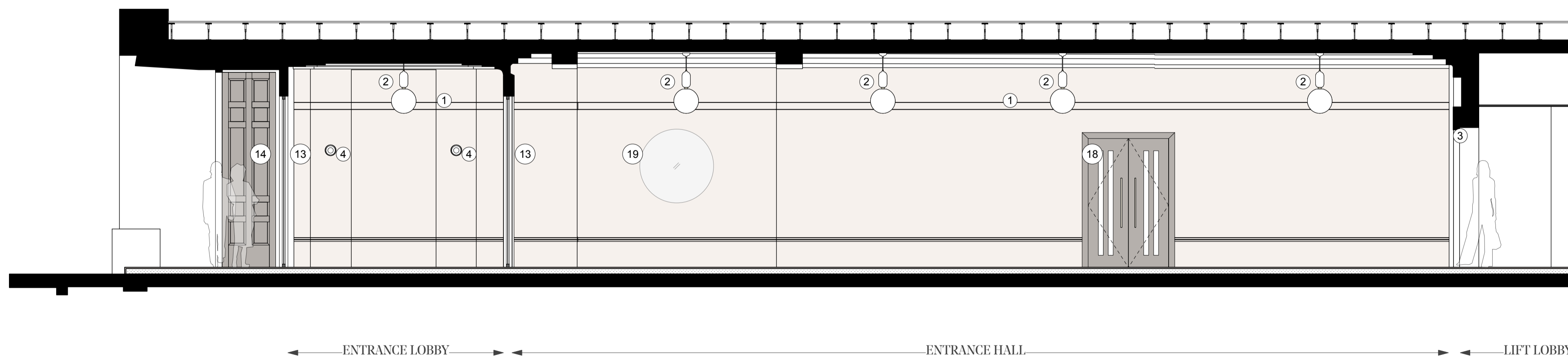
DO NOT SCALE FROM THIS DRAWING.

**NOTES**

- ① Existing picture rail and mouldings painted
- ② Feature pendant light to existing light positions
- ③ Framed opening to lift lobby
- ④ new wall light to existing light positions
- ⑤ Black metal framed glazed screen
- ⑥ Plastered in ventilation grille
- ⑦ Painted wall with mouldings to match existing
- ⑧ New pendant light above soft seating
- ⑨ New timber reception desk
- ⑩ Black metal floor mounted radiator
- ⑪ Black metal encased floor mounted FCU
- ⑫ Original single glazed black metal framed windows with white coloured secondary glazing
- ⑬ Black framed glass entrance doors
- ⑭ Original timber carved entrance doors
- ⑮ Stone clad stairs
- ⑯ Black metal balustrade with brushed stainless steel handrail
- ⑰ Original window recesses with back lit lighting
- ⑱ Timber veneered door to office space
- ⑲ New wall mounted mirror



1 Sectional Elevation A - Entrance Hall  
Scale 1:50 at A1



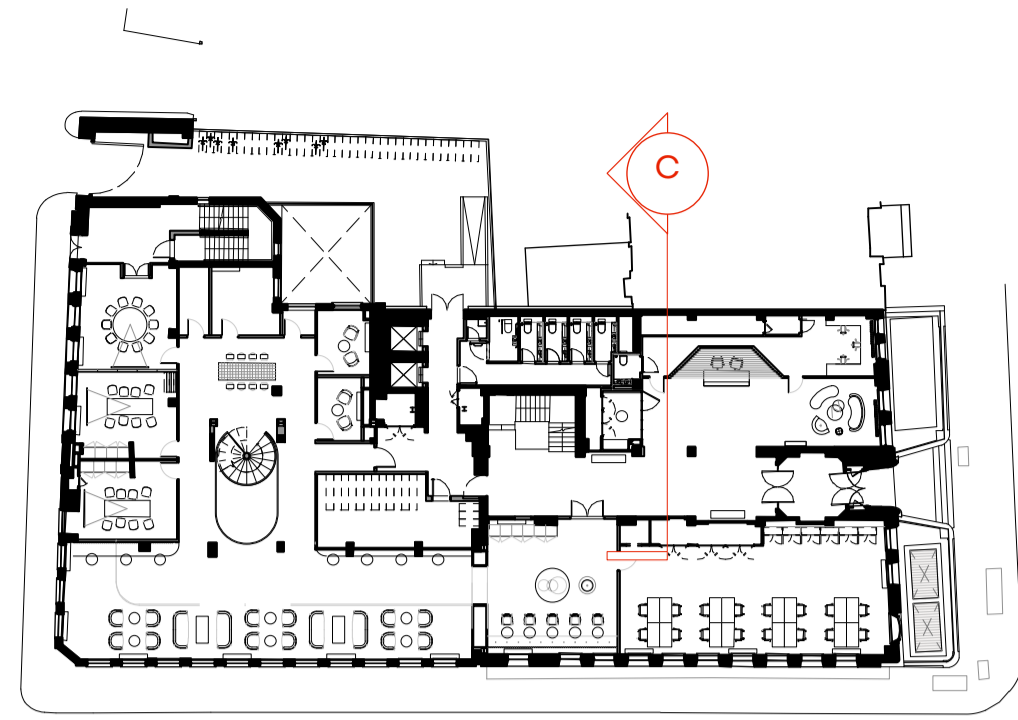
2 Sectional Elevation B - Entrance Hall  
Scale 1:50 at A1

P1	Planning Issue	12.11.18
REVISION		DATE
<b>Entrance Hall &amp; Reception PROPOSED ELEVATIONS</b>		
SCALE	1:50 @ A1 (1:100 @ A3)	
DWG No.	SUM_PL-210	REVISION P1
DATE	Oct. 2018	DRAWN BY VC
DRAWING STATUS	PLANNING	

**Summit  
House**



**KEY**



**GENERAL NOTES**

All dimensions to be checked on site prior to commencement of any works, and/or preparation of any shop drawings.

Sizes of and dimensions to any structural elements are indicative only. See structural engineers drawings for actual sizes / dimensions.

Sizes of and dimensions to any service elements are indicative only. See service engineers drawings for actual sizes and dimensions.

This drawing to be read in conjunction with all other Architect's drawings, specifications and other Consultants' information.

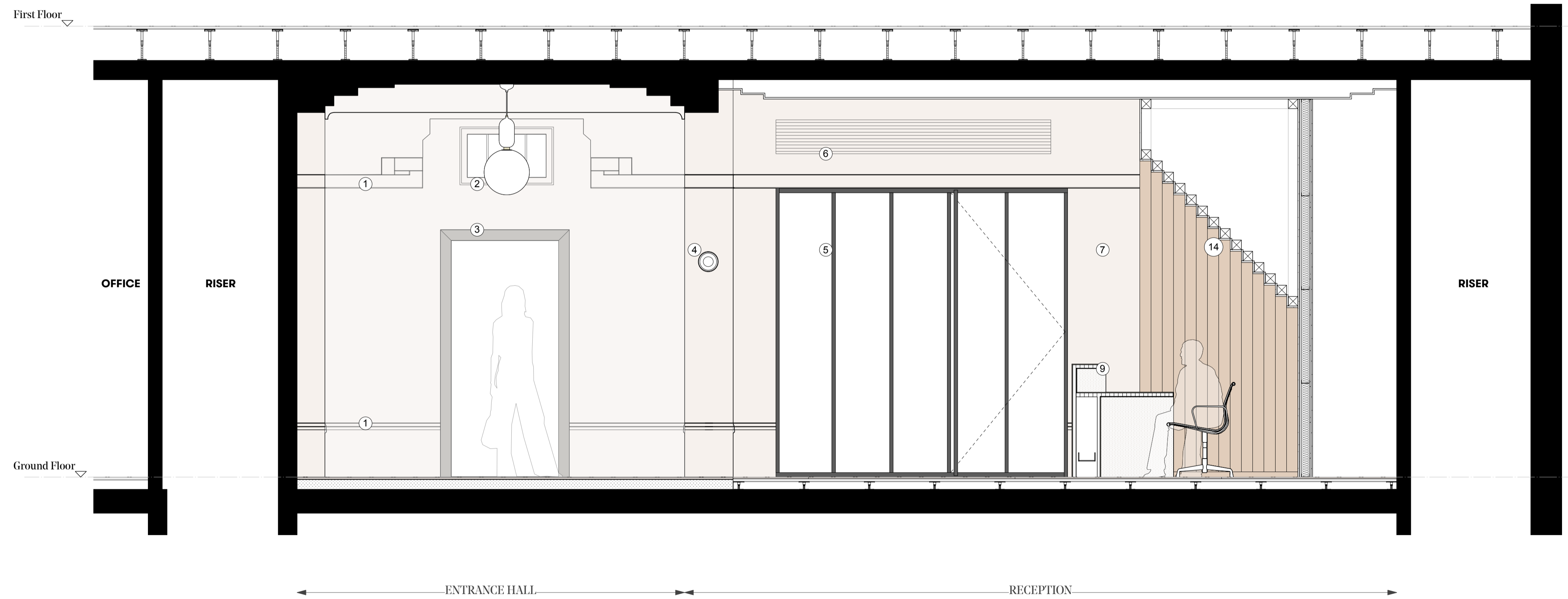
All proprietary systems shown on this drawing are to be installed strictly in accordance with the Manufacturers/Suppliers recommended details.

Any discrepancies between information shown on this drawing and any other contract information or manufacturers/suppliers recommendations is to be brought to the attention of the Architect

DO NOT SCALE FROM THIS DRAWING.

**NOTES**

- ① Existing picture rail and mouldings painted
- ② Feature pendant light to existing light positions
- ③ Framed opening to lift lobby
- ④ new wall light to existing light positions
- ⑤ Black metal framed glazed screen
- ⑥ Plastered in ventilation grille
- ⑦ Painted wall with mouldings to match existing
- ⑧ New pendant light above soft seating
- ⑨ New timber reception desk
- ⑩ Black metal floor mounted radiator
- ⑪ Black metal encased floor mounted FCU
- ⑫ Original single glazed black metal framed windows with white coloured secondary glazing
- ⑬ Black framed glass entrance doors
- ⑭ Original timber carved entrance doors
- ⑮ Stone clad stairs
- ⑯ Black metal balustrade with brushed stainless steel handrail
- ⑰ Original window recesses with back lit lighting
- ⑱ Timber veneered door to office space
- ⑲ New wall mounted mirror



P1 Planning Issue 12.11.18

REVISION DATE

**Entrance Hall & Reception  
PROPOSED ELEVATIONS**

SCALE 1:25 @ A1 (1:50 @ A3)

DWG No. SUM\_PL-211 REVISION P1

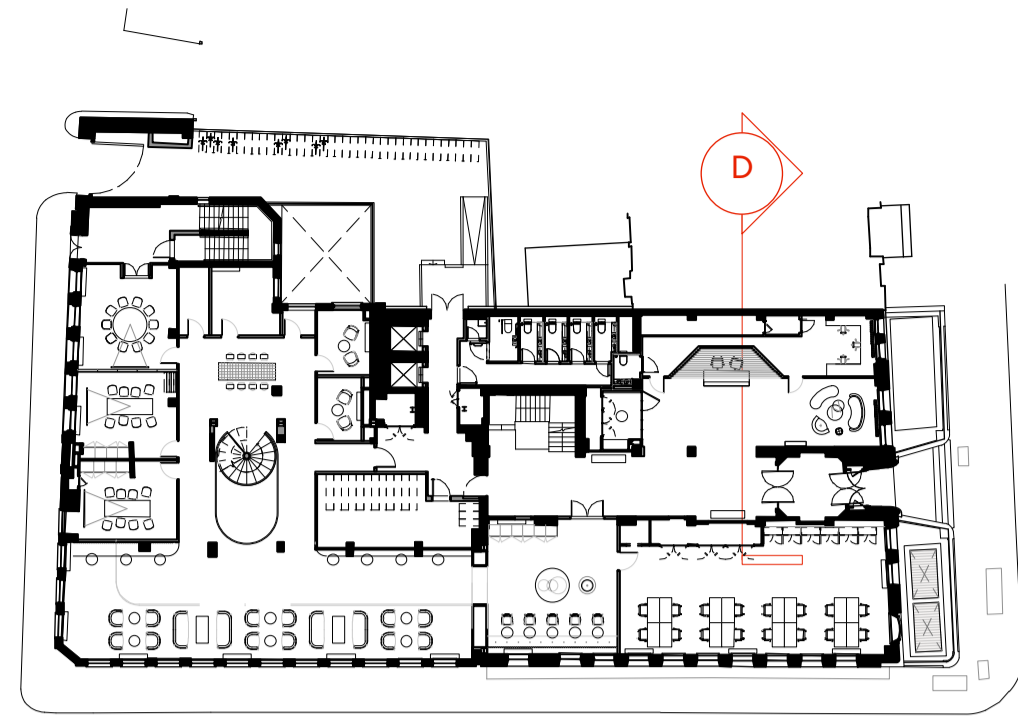
DATE Oct. 2018 DRAWN BY VC

DRAWING STATUS PLANNING

**Summit  
House**



**KEY**



**GENERAL NOTES**

All dimensions to be checked on site prior to commencement of any works, and/or preparation of any shop drawings.

Sizes of and dimensions to any structural elements are indicative only. See structural engineers drawings for actual sizes / dimensions.

Sizes of and dimensions to any service elements are indicative only. See service engineers drawings for actual sizes and dimensions.

This drawing to be read in conjunction with all other Architect's drawings, specifications and other Consultants' information.

All proprietary systems shown on this drawing are to be installed strictly in accordance with the Manufacturers/Suppliers recommended details.

Any discrepancies between information shown on this drawing and any other contract information or manufacturers/suppliers recommendations is to be brought to the attention of the Architect

DO NOT SCALE FROM THIS DRAWING.

**NOTES**

- ① Existing picture rail and mouldings painted
- ② Feature pendant light to existing light positions
- ③ Framed opening to lift lobby
- ④ new wall light to existing light positions
- ⑤ Black metal framed glazed screen
- ⑥ Plastered in ventilation grille
- ⑦ Painted wall with mouldings to match existing
- ⑧ New pendant light above soft seating
- ⑨ New timber reception desk
- ⑩ Black metal floor mounted radiator
- ⑪ Black metal encased floor mounted FCU
- ⑫ Original single glazed black metal framed windows with white coloured secondary glazing
- ⑬ Black framed glass entrance doors
- ⑭ Original timber carved entrance doors
- ⑮ Stone clad stairs
- ⑯ Black metal balustrade with brushed stainless steel handrail
- ⑰ Original window recesses with back lit lighting
- ⑱ Timber veneered door to office space
- ⑲ New wall mounted mirror



P1	Planning Issue	12.11.18
REVISION		DATE
<b>Entrance Hall &amp; Reception PROPOSED ELEVATIONS</b>		
SCALE	1:25 @ A1	(1:50 @ A3)
DWG No.	SUM_PL-212	REVISION P1
DATE	Oct. 2018	DRAWN BY VC
DRAWING STATUS	PLANNING	

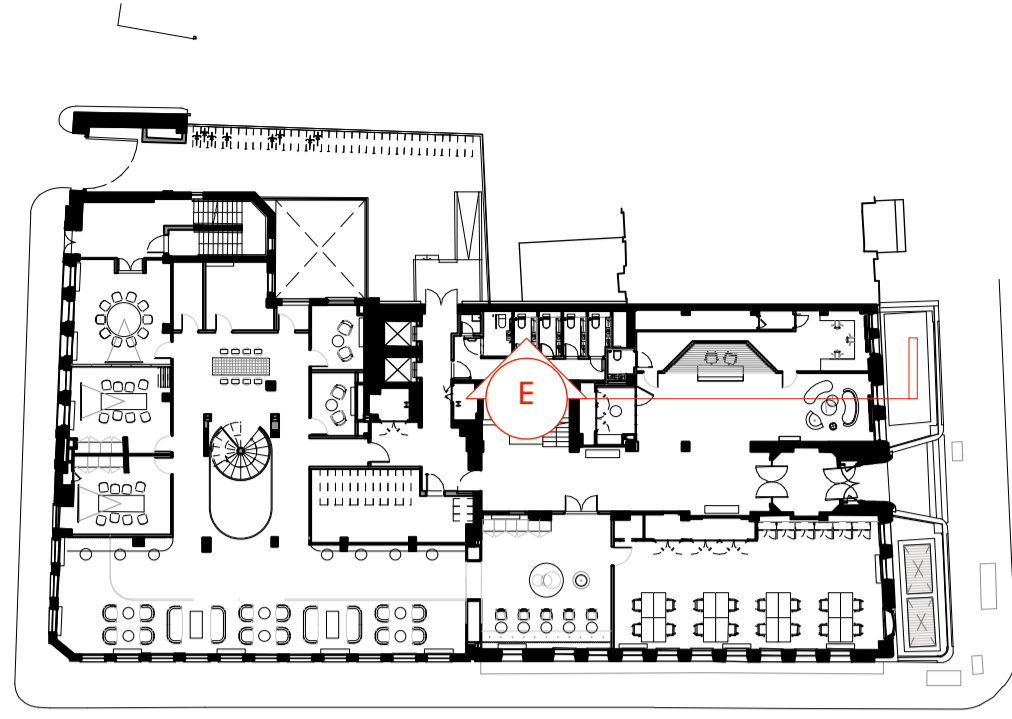
**Summit  
House**



1 Sectional Elevation D - Reception & Entrance Hall  
Scale 1:25 at A1



**KEY**



**GENERAL NOTES**

All dimensions to be checked on site prior to commencement of any works, and/or preparation of any shop drawings.

Sizes of and dimensions to any structural elements are indicative only. See structural engineers drawings for actual sizes / dimensions.

Sizes of and dimensions to any service elements are indicative only. See service engineers drawings for actual sizes and dimensions.

This drawing to be read in conjunction with all other Architect's drawings, specifications and other Consultants' information.

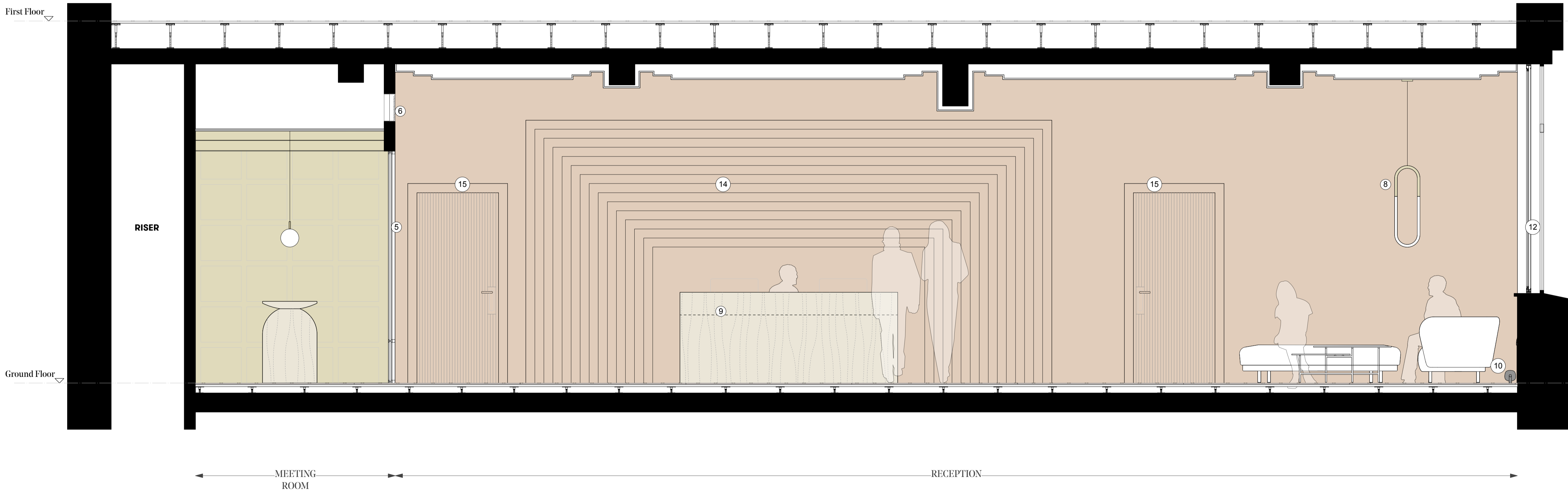
All proprietary systems shown on this drawing are to be installed strictly in accordance with the Manufacturers/Suppliers recommended details.

Any discrepancies between information shown on this drawing and any other contract information or manufacturers/suppliers recommendations is to be brought to the attention of the Architect

DO NOT SCALE FROM THIS DRAWING.

**NOTES**

- ① Existing picture rail and mouldings painted
- ② Feature pendant light to existing light positions
- ③ Framed opening to lift lobby
- ④ new wall light to existing light positions
- ⑤ Black metal framed glazed screen
- ⑥ Plastered in ventilation grille
- ⑦ Painted wall with mouldings to match existing
- ⑧ New pendant light above soft seating
- ⑨ New timber reception desk
- ⑩ Black metal floor mounted radiator
- ⑪ Black metal encased floor mounted FCU
- ⑫ Original single glazed black metal framed windows with white coloured secondary glazing
- ⑬ Black framed glass entrance doors
- ⑭ Original timber carved entrance doors
- ⑮ Stone clad stairs
- ⑯ Black metal balustrade with brushed stainless steel handrail
- ⑰ Original window recesses with back lit lighting
- ⑱ Timber veneered door to office space
- ⑲ New wall mounted mirror



P1	Planning Issue	12.11.18
REVISION		DATE
<b>Entrance Hall &amp; Reception PROPOSED ELEVATIONS</b>		
SCALE	1:25 @ A1	(1:50 @ A3)
DWG No.	SUM_PL-213	REVISION P1
DATE	Oct. 2018	DRAWN BY VC
DRAWING STATUS	PLANNING	

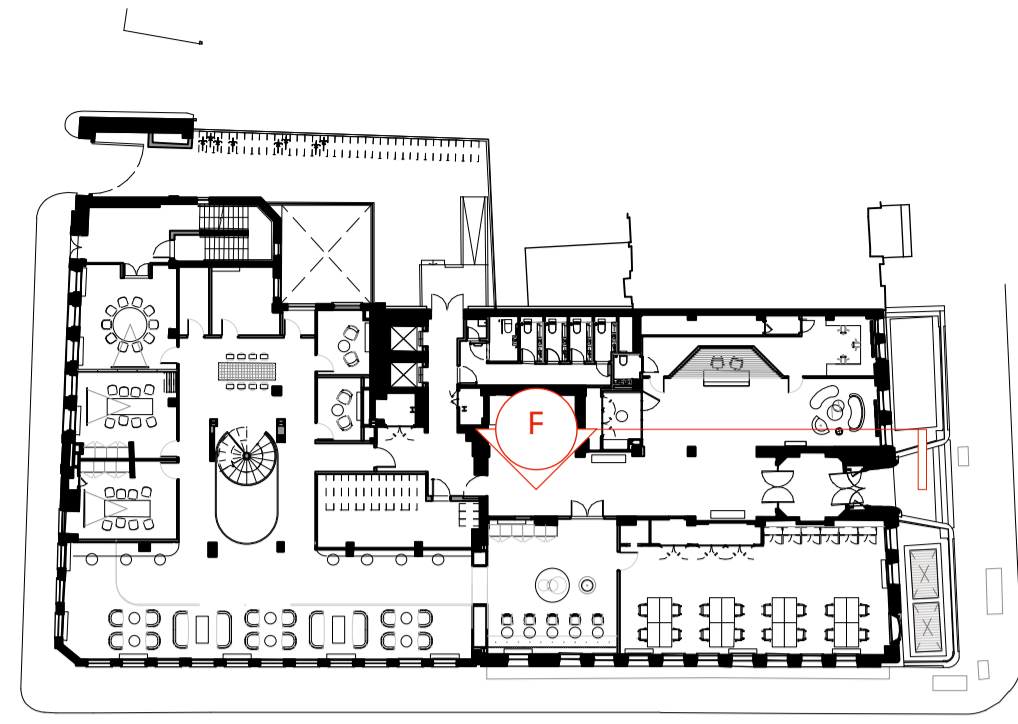
**Summit  
House**



1 Sectional Elevation E - Reception and Meeting Room  
Scale 1:25 at A1



**KEY**



**GENERAL NOTES**

All dimensions to be checked on site prior to commencement of any works, and/or preparation of any shop drawings.

Sizes of and dimensions to any structural elements are indicative only. See structural engineers drawings for actual sizes / dimensions.

Sizes of and dimensions to any service elements are indicative only. See service engineers drawings for actual sizes and dimensions.

This drawing to be read in conjunction with all other Architect's drawings, specifications and other Consultants' information.

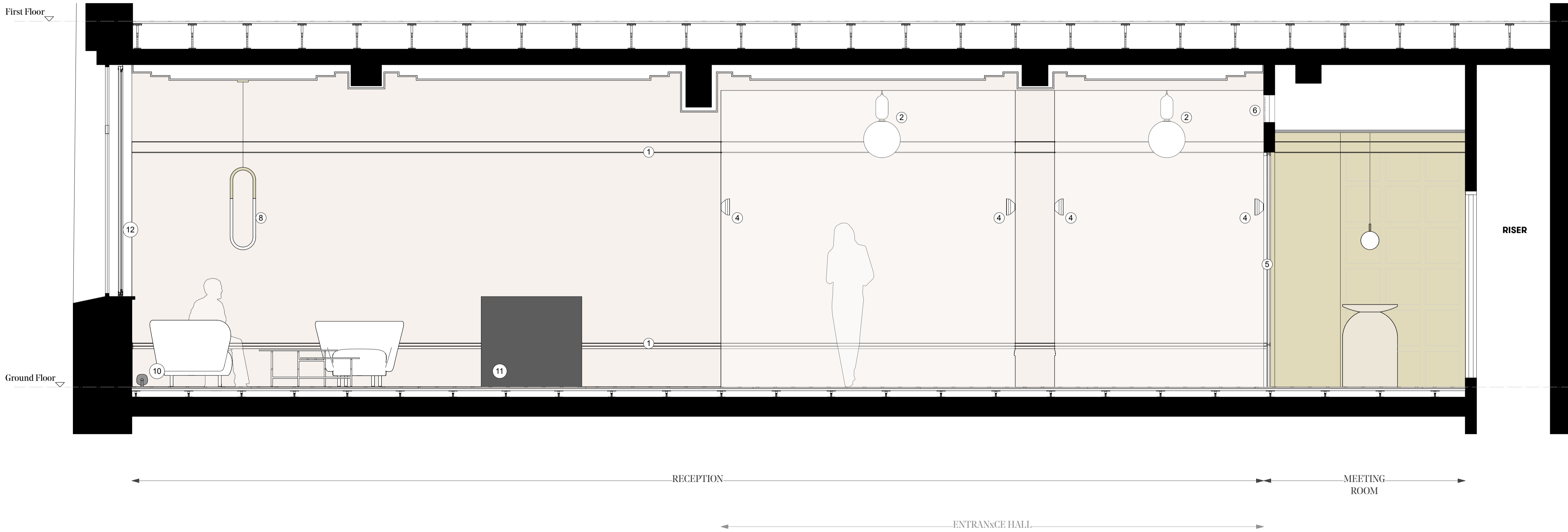
All proprietary systems shown on this drawing are to be installed strictly in accordance with the Manufacturers/Suppliers recommended details.

Any discrepancies between information shown on this drawing and any other contract information or manufacturers/suppliers recommendations is to be brought to the attention of the Architect

DO NOT SCALE FROM THIS DRAWING.

**NOTES**

- ① Existing picture rail and mouldings painted
- ② Feature pendant light to existing light positions
- ③ Framed opening to lift lobby
- ④ new wall light to existing light positions
- ⑤ Black metal framed glazed screen
- ⑥ Plastered in ventilation grille
- ⑦ Painted wall with mouldings to match existing
- ⑧ New pendant light above soft seating
- ⑨ New timber reception desk
- ⑩ Black metal floor mounted radiator
- ⑪ Black metal encased floor mounted FCU
- ⑫ Original single glazed black metal framed windows with white coloured secondary glazing
- ⑬ Black framed glass entrance doors
- ⑭ Original timber carved entrance doors
- ⑮ Stone clad stairs
- ⑯ Black metal balustrade with brushed stainless steel handrail
- ⑰ Original window recesses with back lit lighting
- ⑱ Timber veneered door to office space
- ⑲ New wall mounted mirror



P1 Planning Issue 12.11.18

REVISION DATE

**Entrance Hall & Reception  
PROPOSED ELEVATIONS**

SCALE 1:25 @ A1 (1:50 @ A3)

DWG No. SUM\_PL-214 REVISION P1

DATE Oct. 2018 DRAWN BY VC

DRAWING STATUS **PLANNING**

**Summit  
House**



1 Sectional Elevation F - Reception & Meeting Room  
Scale 1:25 at A1

**GENERAL NOTES**

All dimensions to be checked on site prior to commencement of any works, and/or preparation of any shop drawings.

Sizes of and dimensions to any structural elements are indicative only. See structural engineers drawings for actual sizes / dimensions.

Sizes of and dimensions to any service elements are indicative only. See service engineers drawings for actual sizes and dimensions.

This drawing to be read in conjunction with all other Architect's drawings, specifications and other Consultants' information.

All proprietary systems shown on this drawing are to be installed strictly in accordance with the Manufacturers/Suppliers recommended details.

Any discrepancies between information shown on this drawing and any other contract information or manufacturers/suppliers recommendations is to be brought to the attention of the Architect

DO NOT SCALE FROM THIS DRAWING.

**NOTES**



Existing structure to light well retained and made good

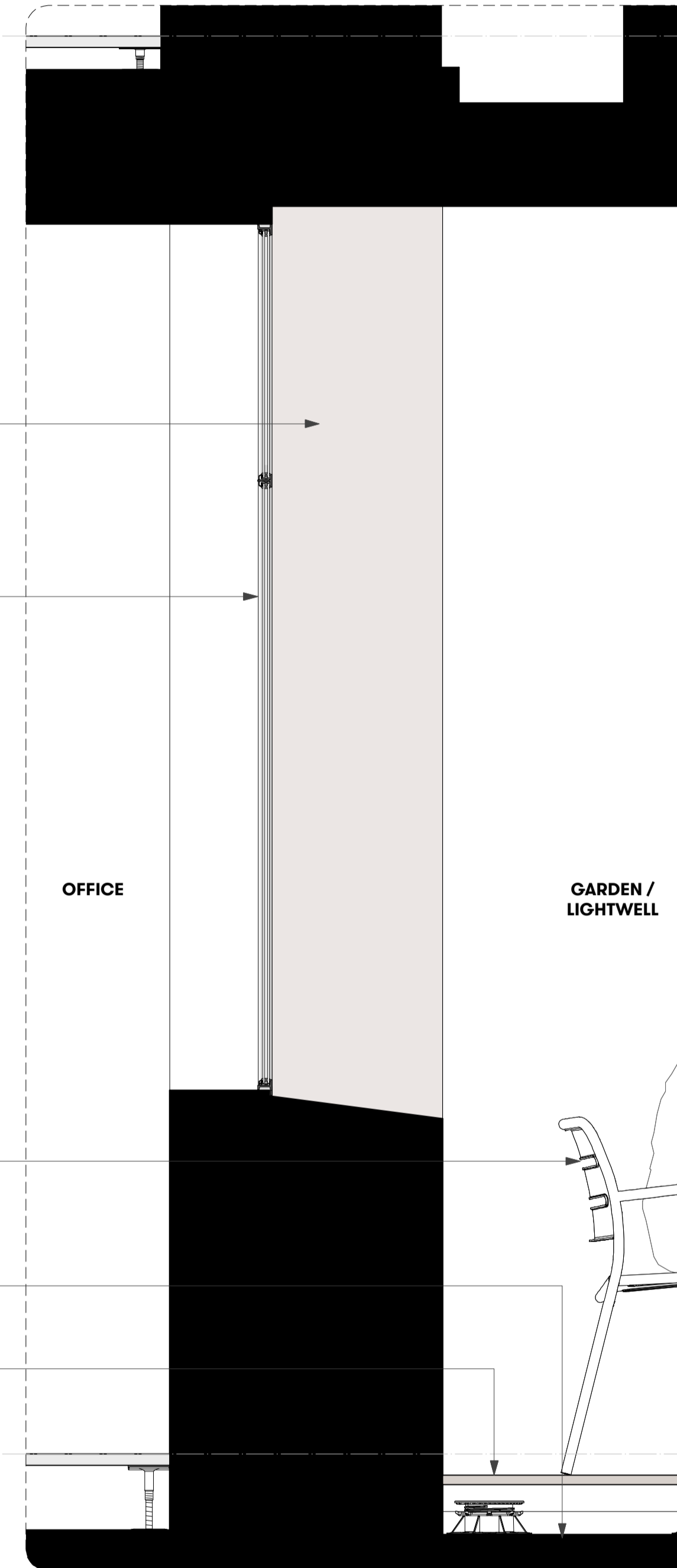
Original faience facade cladding retained

Black powdercoated metal framed window with double glazing

Loose furniture and planting indicative only

Existing slab to be made good, waterproofed and repainted

New composite timber decking to create level floor finish



1 Proposed Elevation - New windows to Front Light Well  
Scale 1:10 at A1

2 Proposed Section - New Windows to Front Light Well  
Scale 1:10 at A1

P1 Planning Issue 12.11.18

REVISION DATE

**Lightwell Windows  
PROPOSED DETAILS**

SCALE 1:10 @ A1 (1:20 @ A3)

DWG No. SUM\_PL-301 REVISION P1

DATE Oct. 2018 DRAWN BY VC

DRAWING STATUS PLANNING

**Summit  
House**



