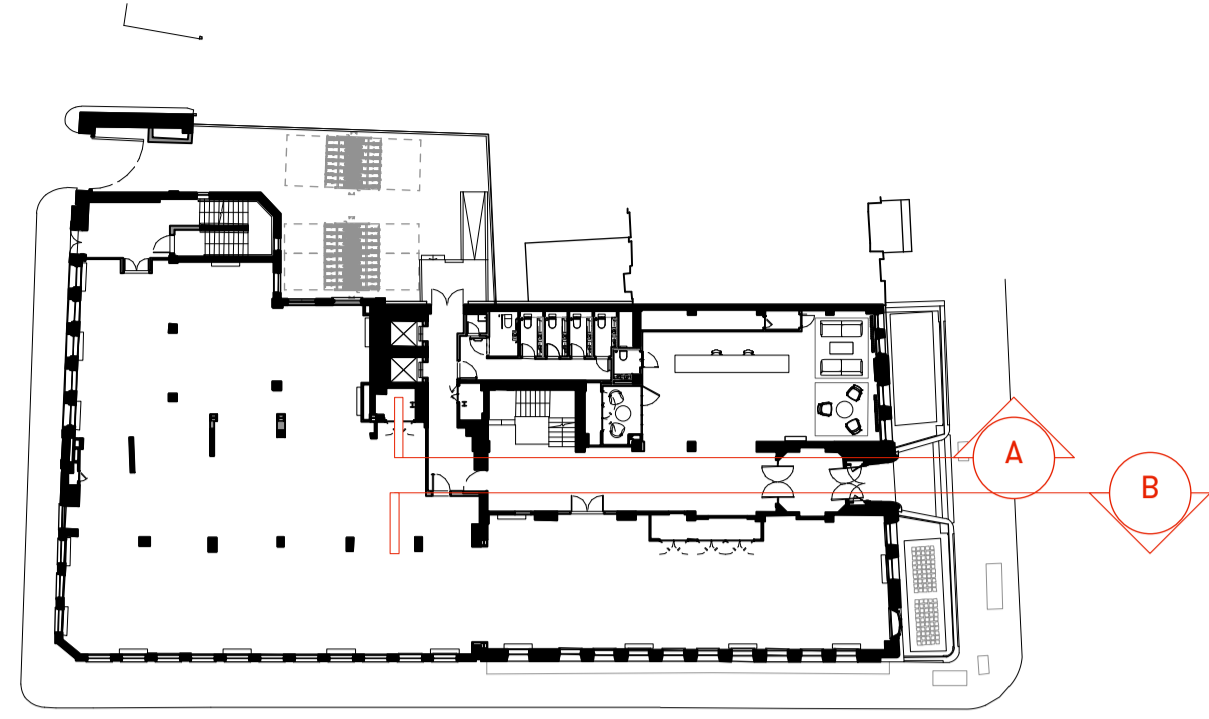


**KEY**



**GENERAL NOTES**

All dimensions to be checked on site prior to commencement of any works, and/or preparation of any shop drawings.

Sizes of and dimensions to any structural elements are indicative only. See structural engineers drawings for actual sizes / dimensions.

Sizes of and dimensions to any service elements are indicative only. See service engineers drawings for actual sizes and dimensions.

This drawing to be read in conjunction with all other Architect's drawings, specifications and other Consultants' information.

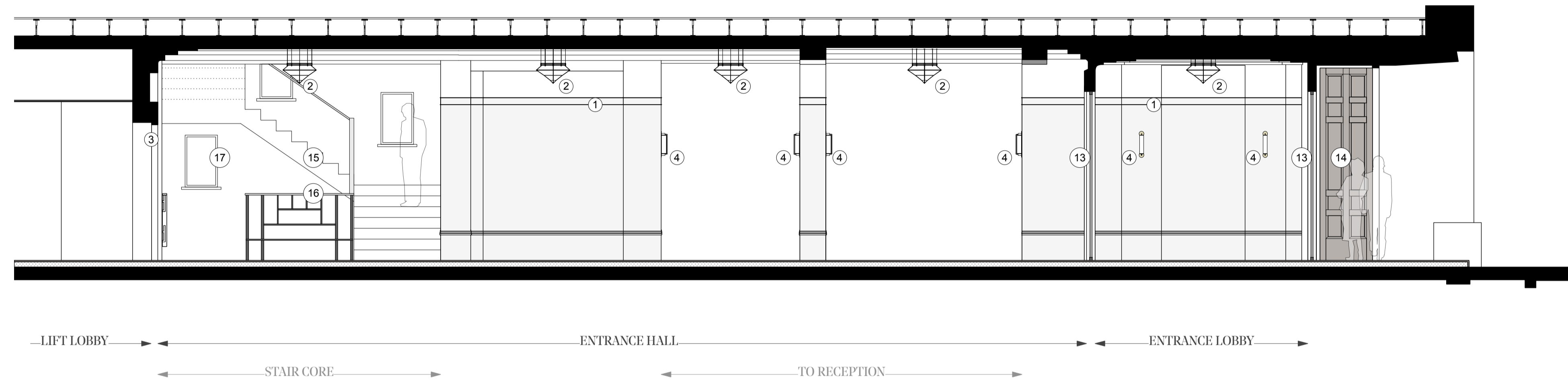
All proprietary systems shown on this drawing are to be installed strictly in accordance with the Manufacturers/Suppliers recommended details.

Any discrepancies between information shown on this drawing and any other contract information or manufacturers/suppliers recommendations is to be brought to the attention of the Architect

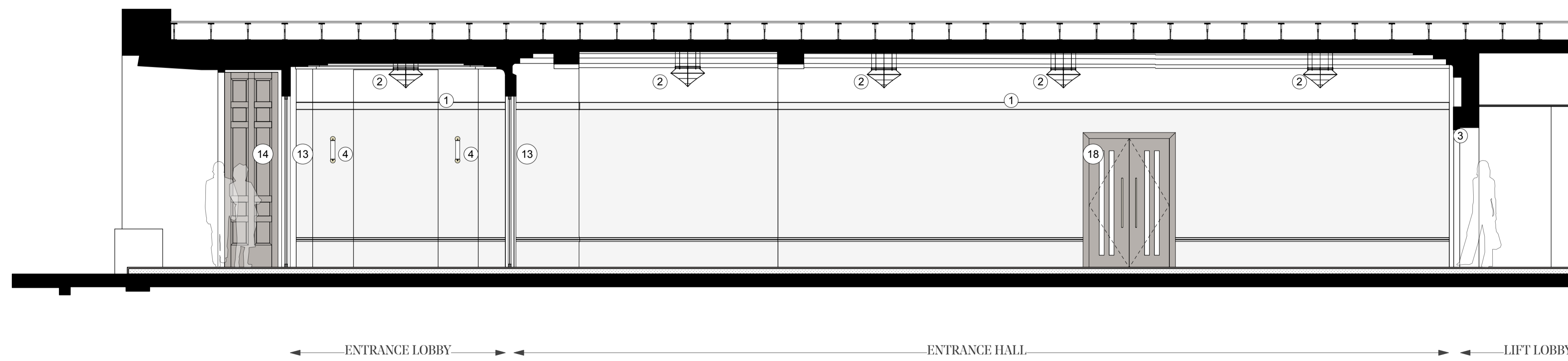
DO NOT SCALE FROM THIS DRAWING.

**NOTES**

- ① Existing picture rail and mouldings
- ② Replica lighting pendant
- ③ Framed opening to lift lobby
- ④ Bronze coloured wall light
- ⑤ Black metal framed glazed screen
- ⑥ Plastered in ventilation grille
- ⑦ Black timber wall panelling with concealed door to WC
- ⑧ Copper pendant lights
- ⑨ Brass and Black metal reception desk
- ⑩ Black metal floor mounted radiator
- ⑪ Black metal encased floor mounted FCU
- ⑫ Original single glazed black metal framed windows with white coloured secondary glazing
- ⑬ Black framed glass entrance doors
- ⑭ Original timber carved entrance doors
- ⑮ Stone clad stairs
- ⑯ Black metal balustrade with brushed stainless steel handrail
- ⑰ Original window recesses with back lit lighting
- ⑱ Timber veneered door to office space



1 Sectional Elevation A - Entrance Hall  
Scale 1:50 at A1



2 Sectional Elevation B - Entrance Hall  
Scale 1:50 at A1

P1 Planning Issue 12.11.18

REVISION DATE

**Entrance Hall & Reception  
EXISTING ELEVATIONS**

SCALE 1:50 @ A1 (1:100 @ A3)

DWG No. SUM\_EE-10 REVISION P1

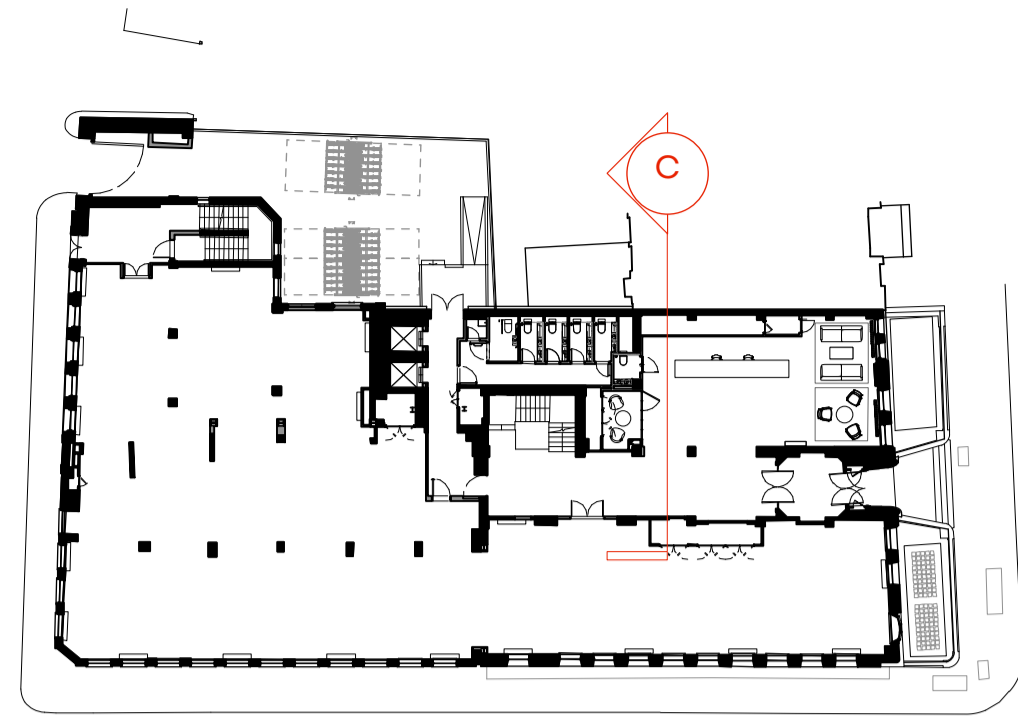
DATE Oct. 2018 DRAWN BY VC

DRAWING STATUS PLANNING

**Summit  
House**



**KEY**



**GENERAL NOTES**

All dimensions to be checked on site prior to commencement of any works, and/or preparation of any shop drawings.

Sizes of and dimensions to any structural elements are indicative only. See structural engineers drawings for actual sizes / dimensions.

Sizes of and dimensions to any service elements are indicative only. See service engineers drawings for actual sizes and dimensions.

This drawing to be read in conjunction with all other Architect's drawings, specifications and other Consultants' information.

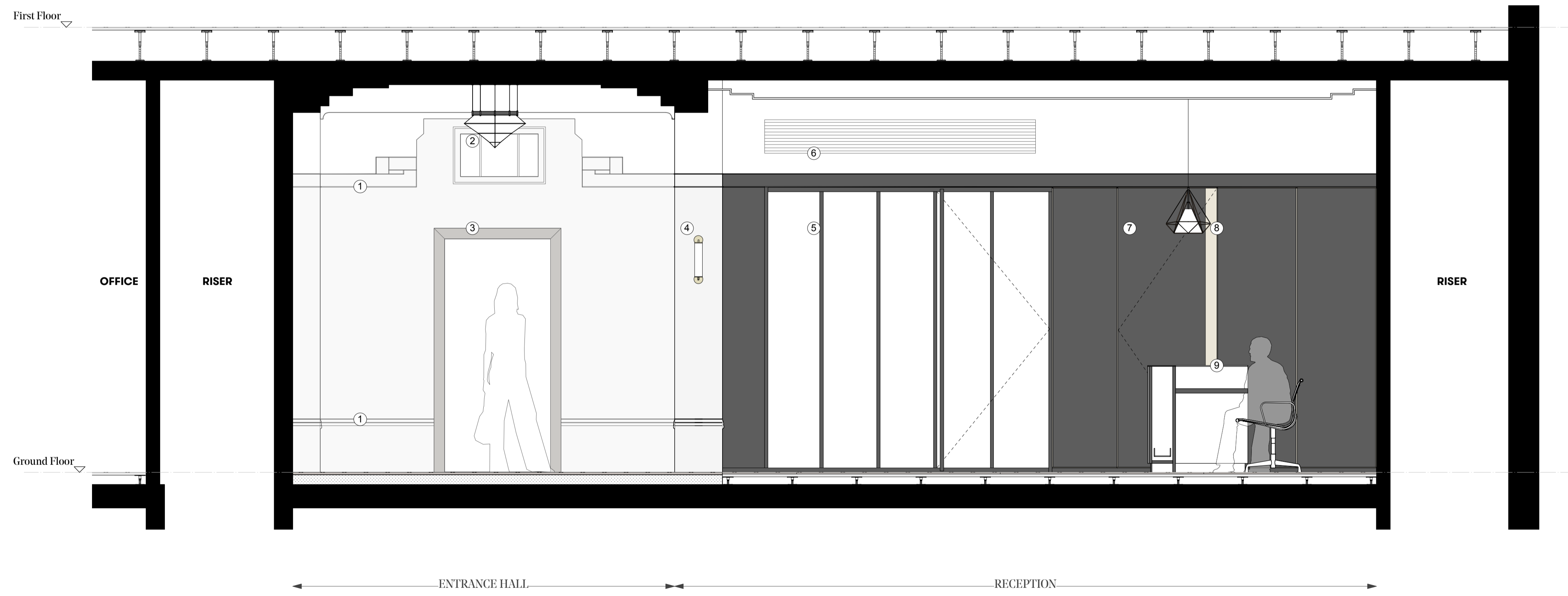
All proprietary systems shown on this drawing are to be installed strictly in accordance with the Manufacturers/Suppliers recommended details.

Any discrepancies between information shown on this drawing and any other contract information or manufacturers/suppliers recommendations is to be brought to the attention of the Architect

DO NOT SCALE FROM THIS DRAWING.

**NOTES**

- ① Existing picture rail and mouldings
- ② Replica lighting pendant
- ③ Framed opening to lift lobby
- ④ Bronze coloured wall light
- ⑤ Black metal framed glazed screen
- ⑥ Plastered in ventilation grille
- ⑦ Black timber wall panelling with concealed door to WC
- ⑧ Copper pendant lights
- ⑨ Brass and Black metal reception desk
- ⑩ Black metal floor mounted radiator
- ⑪ Black metal encased floor mounted FCU
- ⑫ Original single glazed black metal framed windows with white coloured secondary glazing
- ⑬ Black framed glass entrance doors



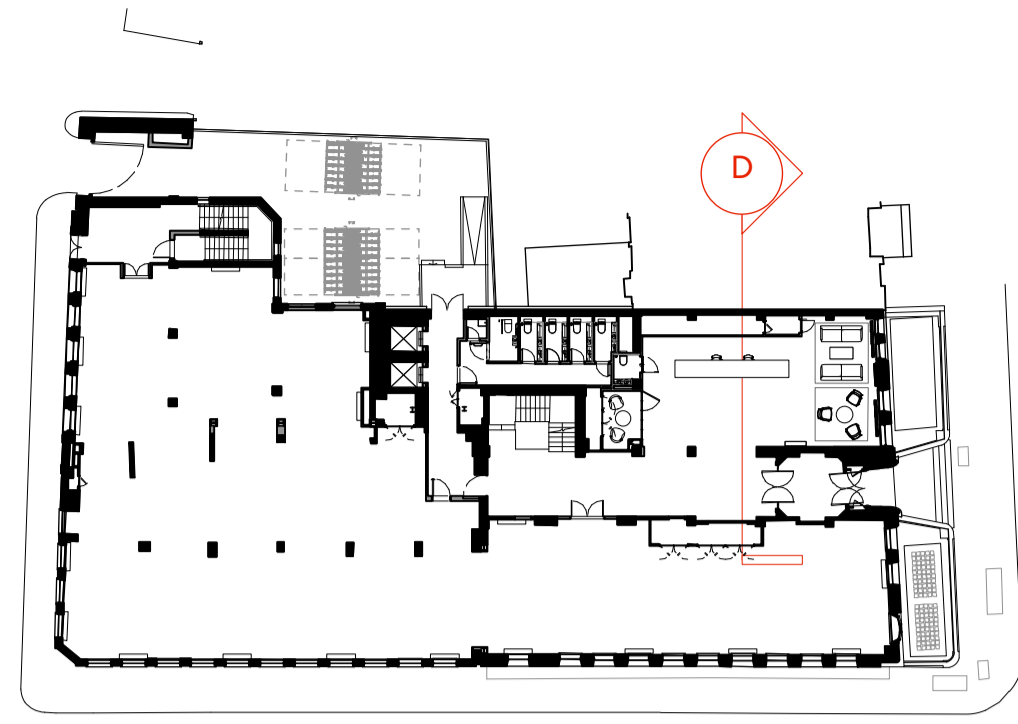
P1	Planning Issue	12.11.18
REVISION		DATE
<b>Entrance Hall &amp; Reception EXISTING ELEVATIONS</b>		
SCALE	1:25 @ A1	(1:50 @ A3)
DWG No.	SUM_EE-11	REVISION P1
DATE	Oct. 2018	DRAWN BY VC
DRAWING STATUS	PLANNING	

**Summit House**



1 Sectional Elevation C - Entrance Hall & Reception  
Scale 1:25 at A1

**KEY**



**GENERAL NOTES**

All dimensions to be checked on site prior to commencement of any works, and/or preparation of any shop drawings.

Sizes of and dimensions to any structural elements are indicative only. See structural engineers drawings for actual sizes / dimensions.

Sizes of and dimensions to any service elements are indicative only. See service engineers drawings for actual sizes and dimensions.

This drawing to be read in conjunction with all other Architect's drawings, specifications and other Consultants' information.

All proprietary systems shown on this drawing are to be installed strictly in accordance with the Manufacturers/Suppliers recommended details.

Any discrepancies between information shown on this drawing and any other contract information or manufacturers/suppliers recommendations is to be brought to the attention of the Architect

DO NOT SCALE FROM THIS DRAWING.

**NOTES**

- ① Existing picture rail and mouldings
- ② Replica lighting pendant
- ③ Framed opening to lift lobby
- ④ Bronze coloured wall light
- ⑤ Black metal framed glazed screen
- ⑥ Plastered in ventilation grille
- ⑦ Black timber wall panelling with concealed door to WC
- ⑧ Copper pendant lights
- ⑨ Brass and Black metal reception desk
- ⑩ Black metal floor mounted radiator
- ⑪ Black metal encased floor mounted FCU
- ⑫ Original single glazed black metal framed windows with white coloured secondary glazing
- ⑬ Black framed glass entrance doors

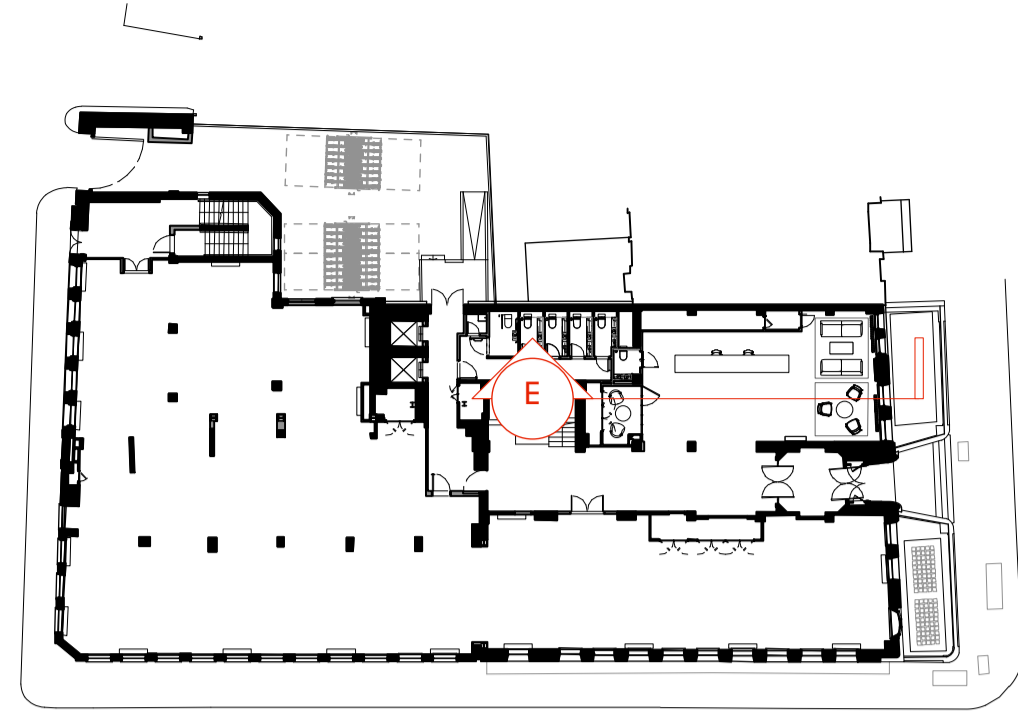


P1	Planning Issue	12.11.18
REVISION		DATE
<b>Entrance Hall &amp; Reception EXISTING ELEVATIONS</b>		
SCALE	1:25 @ A1	(1:50 @ A3)
DWG No.	SUM_EE-12	REVISION P1
DATE	Oct. 2018	DRAWN BY VC
DRAWING STATUS	PLANNING	

**Summit House**



**KEY**



**GENERAL NOTES**

All dimensions to be checked on site prior to commencement of any works, and/or preparation of any shop drawings.

Sizes of and dimensions to any structural elements are indicative only. See structural engineers drawings for actual sizes / dimensions.

Sizes of and dimensions to any service elements are indicative only. See service engineers drawings for actual sizes and dimensions.

This drawing to be read in conjunction with all other Architect's drawings, specifications and other Consultants' information.

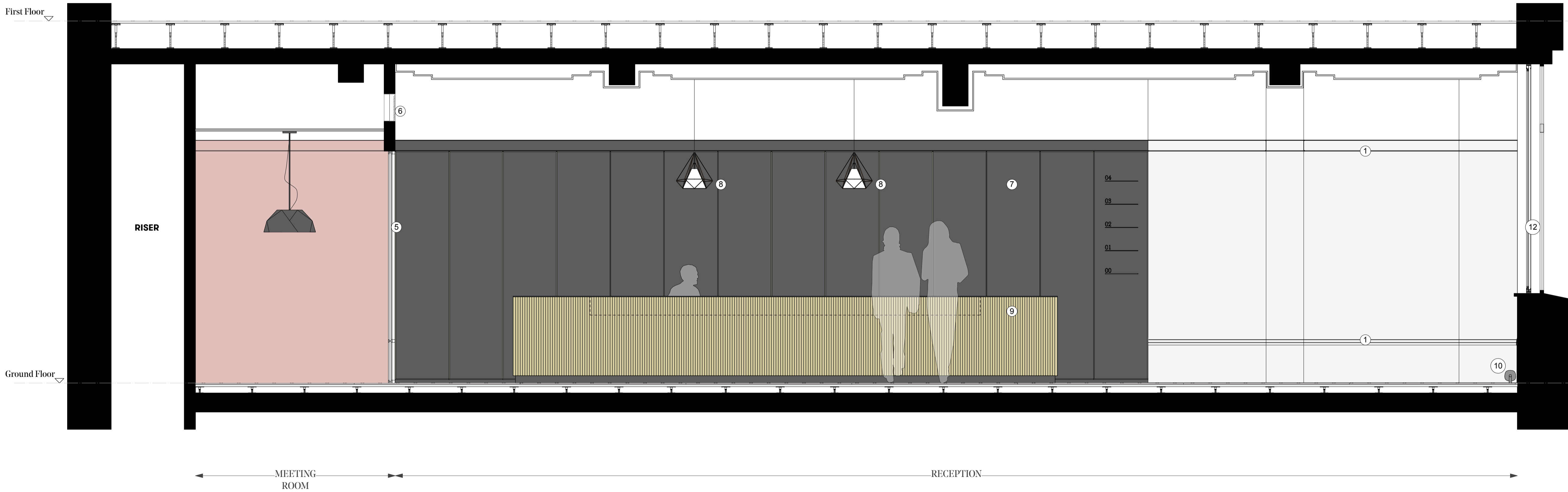
All proprietary systems shown on this drawing are to be installed strictly in accordance with the Manufacturers/Suppliers recommended details.

Any discrepancies between information shown on this drawing and any other contract information or manufacturers/suppliers recommendations is to be brought to the attention of the Architect

DO NOT SCALE FROM THIS DRAWING.

**NOTES**

- ① Existing picture rail and mouldings
- ② Replica lighting pendant
- ③ Framed opening to lift lobby
- ④ Bronze coloured wall light
- ⑤ Black metal framed glazed screen
- ⑥ Plastered in ventilation grille
- ⑦ Black timber wall panelling with concealed door to WC
- ⑧ Copper pendant lights
- ⑨ Brass and Black metal reception desk
- ⑩ Black metal floor mounted radiator
- ⑪ Black metal encased floor mounted FCU
- ⑫ Original single glazed black metal framed windows with white coloured secondary glazing
- ⑬ Black framed glass entrance doors



P1	Planning Issue	12.11.18
REVISION		DATE
<b>Entrance Hall &amp; Reception EXISTING ELEVATIONS</b>		
SCALE	1:25 @ A1	(1:50 @ A3)
DWG No.	SUM_EE-13	REVISION P1
DATE	Oct. 2018	DRAWN BY VC
DRAWING STATUS	PLANNING	

**Summit House**



1 Sectional Elevation E - Reception and Meeting Room  
Scale 1:25 at A1