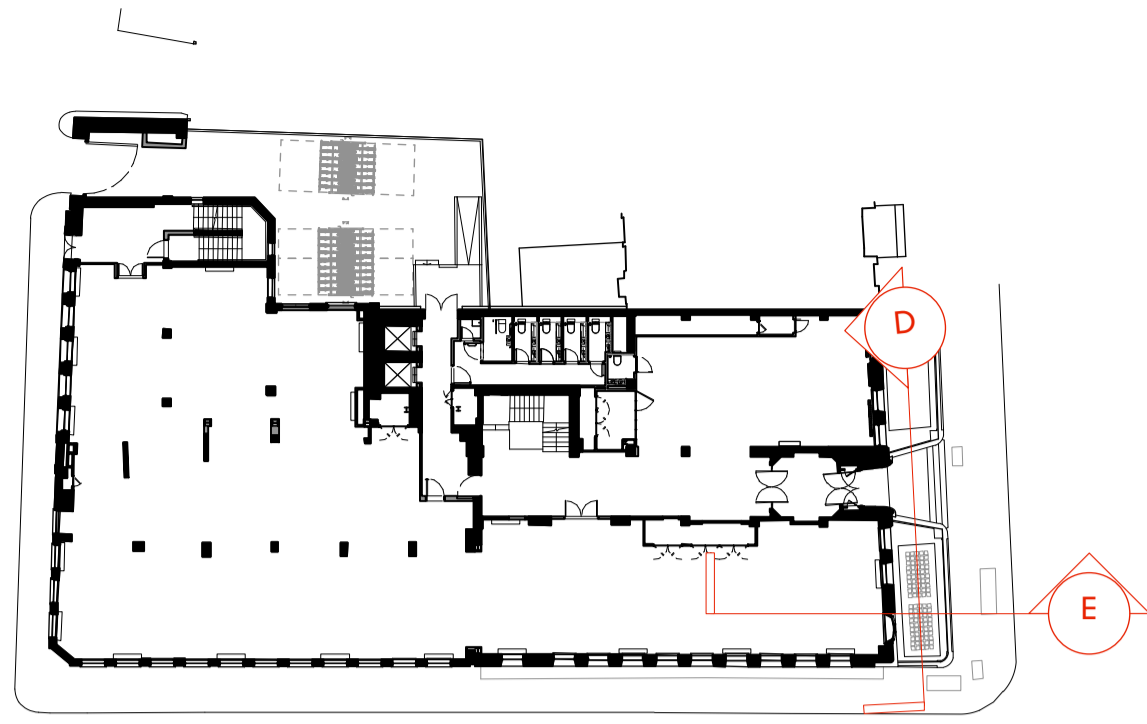


**KEY**



**GENERAL NOTES**

All dimensions to be checked on site prior to commencement of any works, and/or preparation of any shop drawings.

Sizes of and dimensions to any structural elements are indicative only. See structural engineers drawings for actual sizes / dimensions.

Sizes of and dimensions to any service elements are indicative only. See service engineers drawings for actual sizes and dimensions.

This drawing to be read in conjunction with all other Architect's drawings, specifications and other Consultants' information.

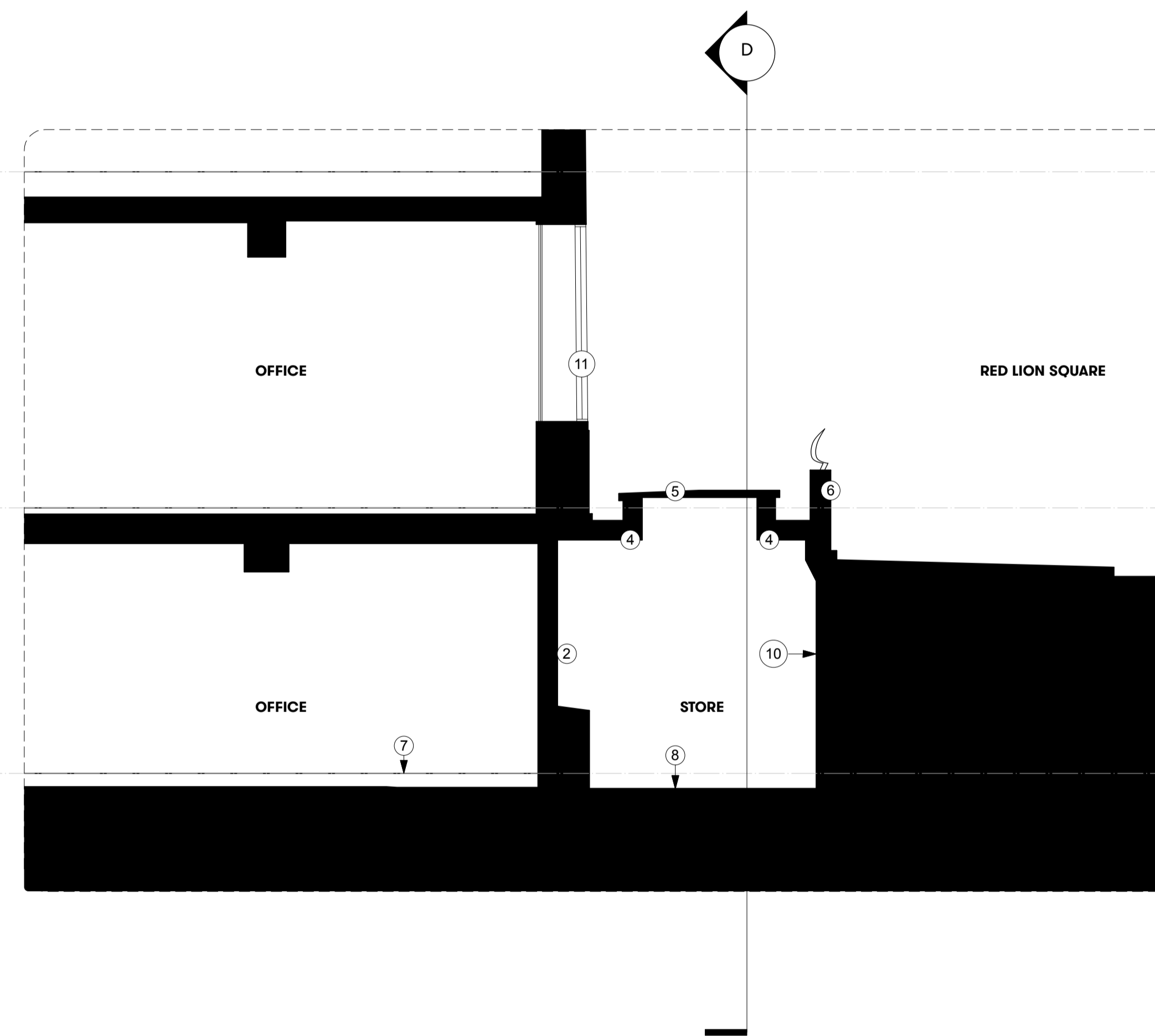
All proprietary systems shown on this drawing are to be installed strictly in accordance with the Manufacturers/Suppliers recommended details.

Any discrepancies between information shown on this drawing and any other contract information or manufacturers/suppliers recommendations is to be brought to the attention of the Architect

DO NOT SCALE FROM THIS DRAWING.

**NOTES**

- ① Main Entrance - original timber doors
- ② Original window reveal blocked up
- ③ Internal, solid wood door, painted
- ④ Existing support structure to 'lid'
- ⑤ Roof light 'lid' to store. Concrete with sandblasted glass blocks.
- ⑥ Perimeter wall to lightwell with original cast iron railings
- ⑦ Raised access floor
- ⑧ Painted concrete slab
- ⑨ Yellow faience cladding
- ⑩ Painted render wall
- ⑪ Black painted metal framed windows



1 Sectional Elevation D - Through Lightwell looking at main facade  
Scale 1:50 at A1

2 Sectional Elevation E - Through Lightwell  
Scale 1:50 at A1

P1 Planning Issue 12.11.18

REVISION DATE

**Lightwell Details  
EXISTING SECTIONS**

SCALE 1:50 @ A1 (1:100 @ A3)

DWG No. SUM\_ES-10 REVISION P1

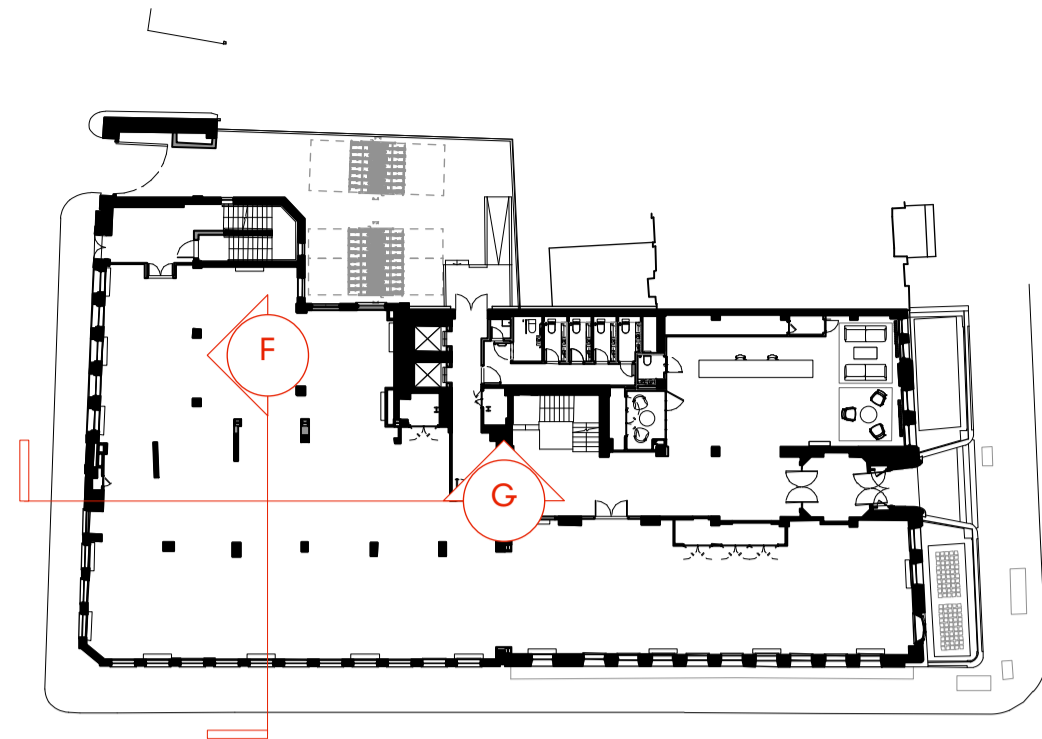
DATE Aug. 2018 DRAWN BY VC

DRAWING STATUS PLANNING

**Summit  
House**



**KEY**



**GENERAL NOTES**

All dimensions to be checked on site prior to commencement of any works, and/or preparation of any shop drawings.

Sizes of and dimensions to any structural elements are indicative only. See structural engineers drawings for actual sizes / dimensions.

Sizes of and dimensions to any service elements are indicative only. See service engineers drawings for actual sizes and dimensions.

This drawing to be read in conjunction with all other Architect's drawings, specifications and other Consultants' information.

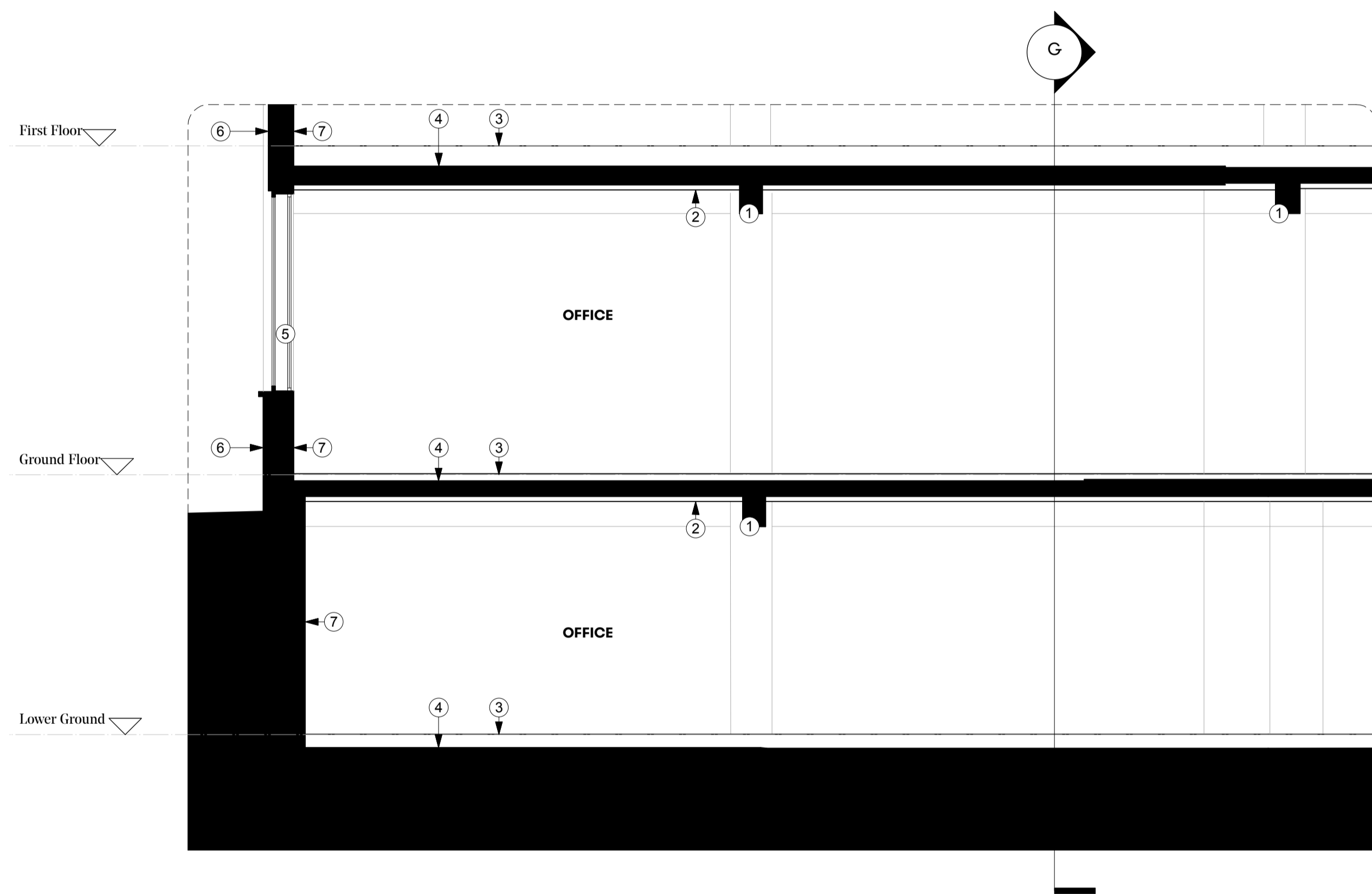
All proprietary systems shown on this drawing are to be installed strictly in accordance with the Manufacturers/Suppliers recommended details.

Any discrepancies between information shown on this drawing and any other contract information or manufacturers/suppliers recommendations is to be brought to the attention of the Architect

DO NOT SCALE FROM THIS DRAWING.

**NOTES**

- ① Structural downstand beams, painted
- ② Plasterboard lining to ceiling, painting
- ③ Raised access floor
- ④ Concrete slab
- ⑤ Black painted metal framed windows
- ⑥ Yellow faience cladding
- ⑦ Plasterboard lined walls, painted



1 Sectional Elevation F - Stairwell  
Scale 1:50 at A1

2 Sectional Elevation G - Stairwell  
Scale 1:50 at A1

P1 Planning Issue 12.11.18

REVISION DATE

**Stairwell Details  
EXISTING SECTIONS**

SCALE 1:50 @ A1 (1:100 @ A3)

DWG No. SUM\_ES-15 REVISION P1

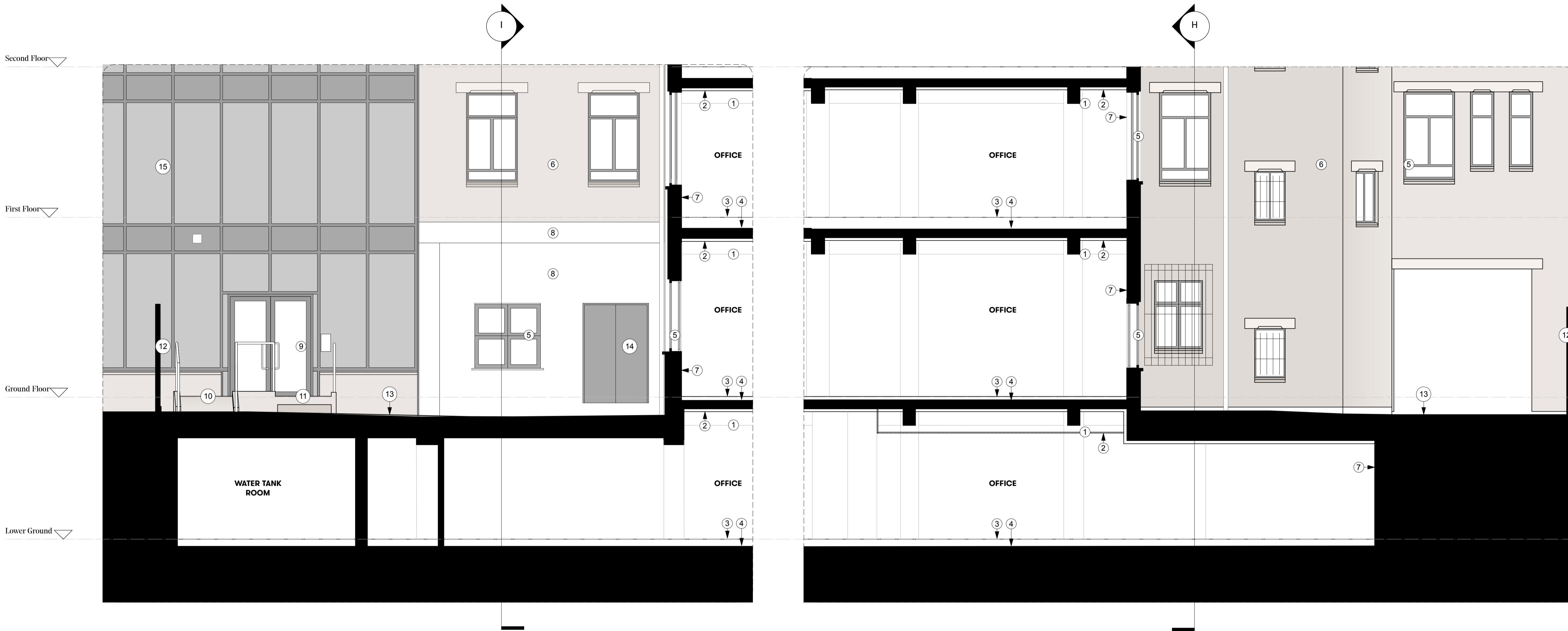
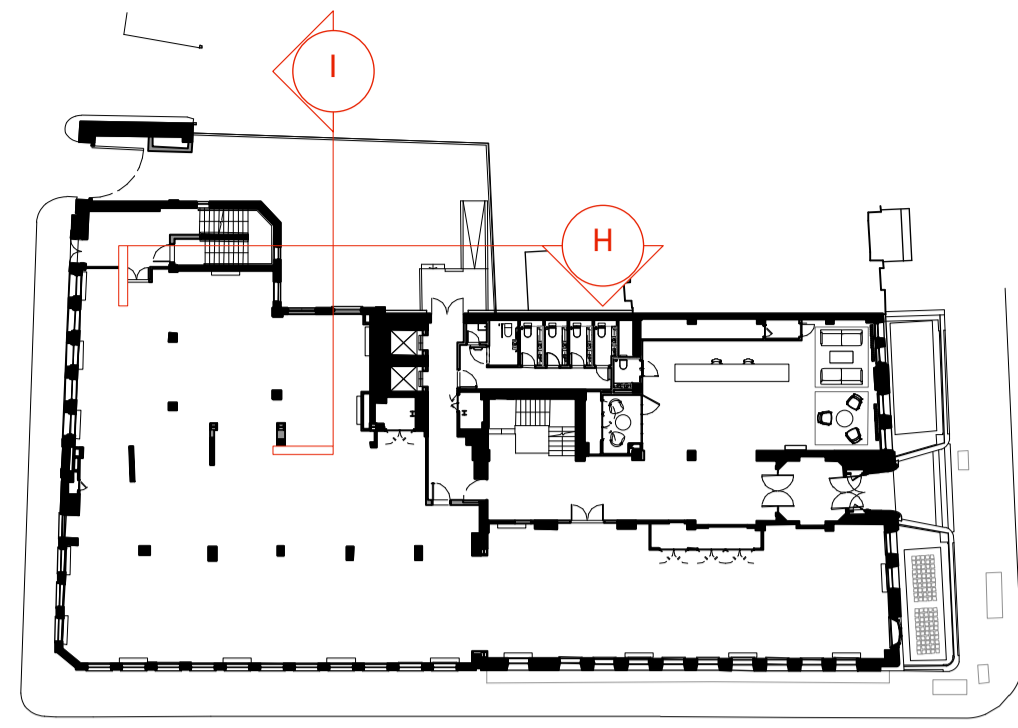
DATE Aug. 2018 DRAWN BY VC

DRAWING STATUS PLANNING

**Summit  
House**



**KEY**



**GENERAL NOTES**

All dimensions to be checked on site prior to commencement of any works, and/or preparation of any shop drawings.

Sizes of and dimensions to any structural elements are indicative only. See structural engineers drawings for actual sizes / dimensions.

Sizes of and dimensions to any service elements are indicative only. See service engineers drawings for actual sizes and dimensions.

This drawing to be read in conjunction with all other Architect's drawings, specifications and other Consultants' information.

All proprietary systems shown on this drawing are to be installed strictly in accordance with the Manufacturers/Suppliers recommended details.

Any discrepancies between information shown on this drawing and any other contract information or manufacturers/suppliers recommendations is to be brought to the attention of the Architect

DO NOT SCALE FROM THIS DRAWING.

**NOTES**

- ① Structural downstand beams, lined and painted
- ② Plasterboard lining to ceiling, painted
- ③ Raised access floor with new floor finish
- ④ Concrete slab
- ⑤ Black painted metal framed windows
- ⑥ Red brick facade
- ⑦ Plasterboard lined walls, painted
- ⑧ White painted render to facade
- ⑨ Black metal framed glazed entrance door
- ⑩ Concrete ramp with black metal balustrade
- ⑪ Concrete stairs with black metal balustrade
- ⑫ Black painted metal fencing and anti-climb guard
- ⑬ Asphalt finish to courtyard
- ⑭ Black painted door - blocked internally
- ⑮ Black metal framed curtain walling with black back painted glass
- ⑯ Galvanised double stacked cycle racks with black metal shelter

P1 Planning Issue 12.11.18

REVISION DATE

**Courtyard EXISTING SECTIONS**

SCALE 1:50 @ A1 (1:100 @ A3)

DWG No. SUM\_ES-20 REVISION P1

DATE Oct. 2018 DRAWN BY VC

DRAWING STATUS PLANNING

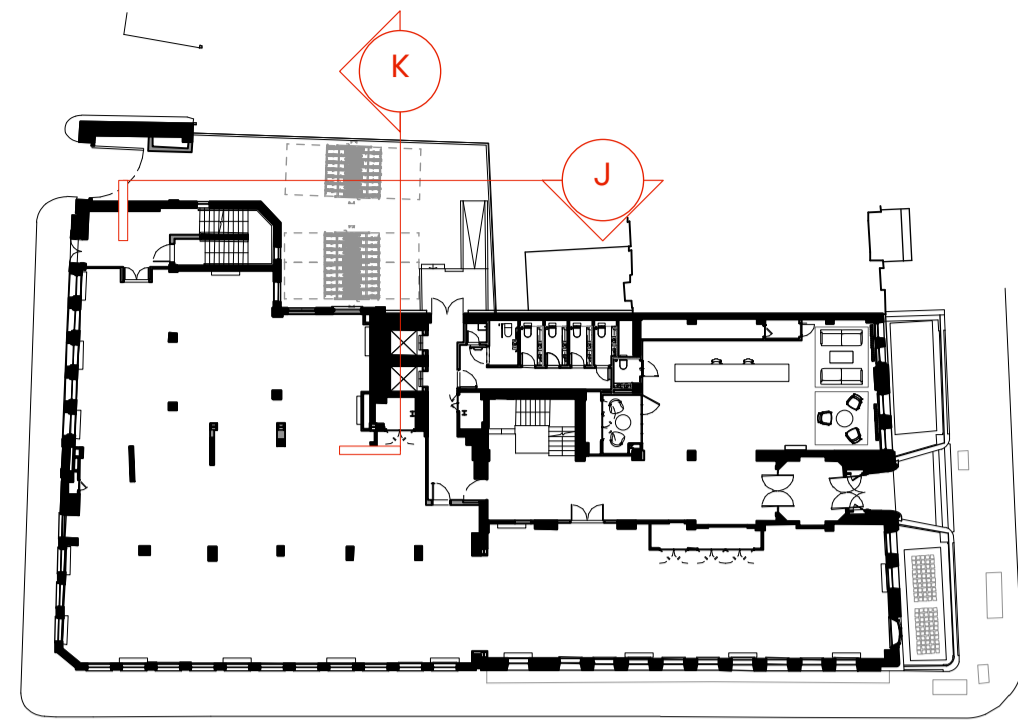
1 Sectional Elevation H - Courtyard  
Scale 1:50 at A1

2 Sectional Elevation I - Courtyard  
Scale 1:50 at A1

**Summit House**



**KEY**



**GENERAL NOTES**

All dimensions to be checked on site prior to commencement of any works, and/or preparation of any shop drawings.

Sizes of and dimensions to any structural elements are indicative only. See structural engineers drawings for actual sizes / dimensions.

Sizes of and dimensions to any service elements are indicative only. See service engineers drawings for actual sizes and dimensions.

This drawing to be read in conjunction with all other Architect's drawings, specifications and other Consultants' information.

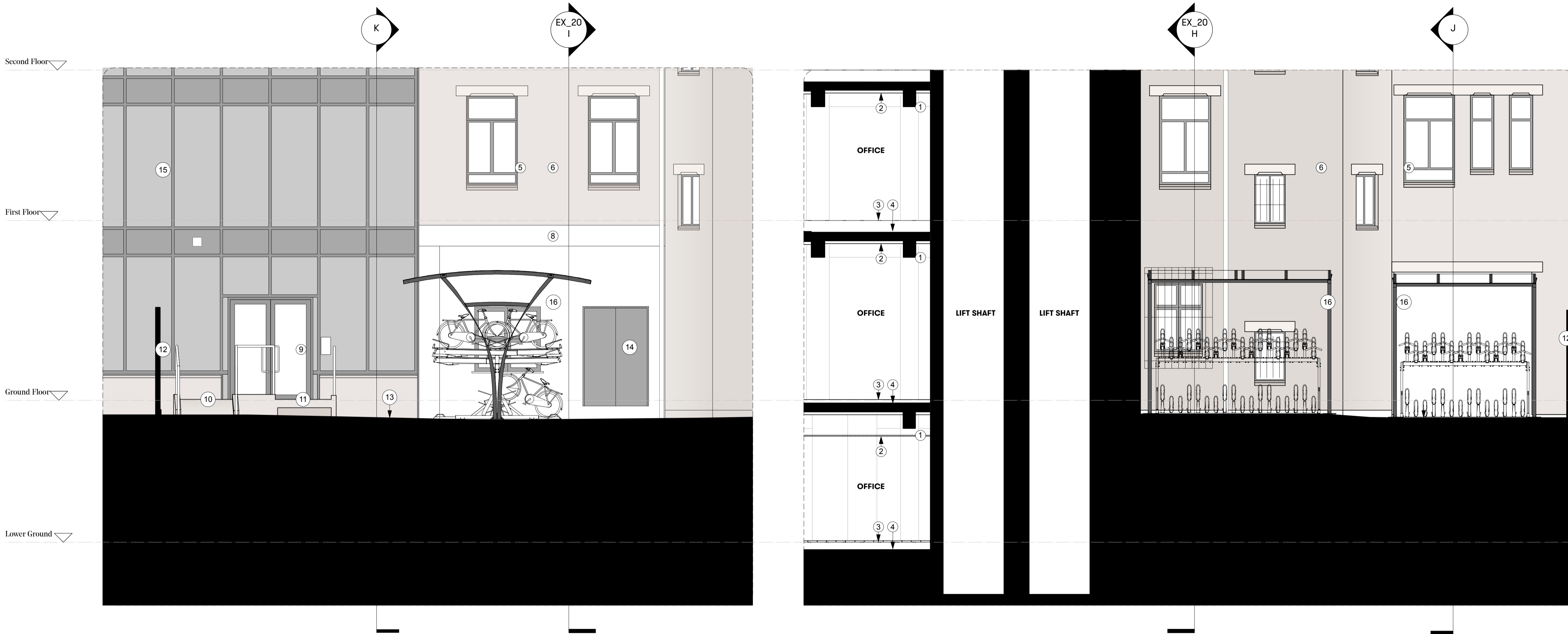
All proprietary systems shown on this drawing are to be installed strictly in accordance with the Manufacturers/Suppliers recommended details.

Any discrepancies between information shown on this drawing and any other contract information or manufacturers/suppliers recommendations is to be brought to the attention of the Architect

DO NOT SCALE FROM THIS DRAWING.

**NOTES**

- ① Structural downstand beams, lined and painted
- ② Plasterboard lining to ceiling, painted
- ③ Raised access floor with new floor finish
- ④ Concrete slab
- ⑤ Black painted metal framed windows
- ⑥ Red brick facade
- ⑦ Plasterboard lined walls, painted
- ⑧ White painted render to facade
- ⑨ Black metal framed glazed entrance door
- ⑩ Concrete ramp with black metal balustrade
- ⑪ Concrete stairs with black metal balustrade
- ⑫ Black painted metal fencing and anti-climb guard
- ⑬ Asphalt finish to courtyard
- ⑭ Black painted door - blocked internally
- ⑮ Black metal framed curtain walling with black back painted glass
- ⑯ Galvanised double stacked cycle racks with black metal shelter



P1 Planning Issue 12.11.18

REVISION DATE

**Courtyard Sections J and K  
EXISTING SECTIONS**

SCALE 1:50 @ A1 (1:100 @ A3)

DWG No. SUM\_ES-21 REVISION P1

DATE Oct. 2018 DRAWN BY VC

DRAWING STATUS PLANNING

1 Sectional Elevation J - Courtyard  
Scale 1:50 at A1

2 Sectional Elevation K - Courtyard  
Scale 1:50 at A1

**Summit  
House**



**GENERAL NOTES**

All dimensions to be checked on site prior to commencement of any works, and/or preparation of any shop drawings.

Sizes of and dimensions to any structural elements are indicative only. See structural engineers drawings for actual sizes / dimensions.

Sizes of and dimensions to any service elements are indicative only. See service engineers drawings for actual sizes and dimensions.

This drawing to be read in conjunction with all other Architect's drawings, specifications and other Consultants' information.

All proprietary systems shown on this drawing are to be installed strictly in accordance with the Manufacturers/Suppliers recommended details.

Any discrepancies between information shown on this drawing and any other contract information or manufacturers/suppliers recommendations is to be brought to the attention of the Architect

DO NOT SCALE FROM THIS DRAWING.

**NOTES**



P1 Planning Issue 12.11.18

REVISION DATE

**North Elevation  
EXISTING ELEVATION**

SCALE 1:100 @ A1 (1:200 @ A3)

DWG No. SUM\_EE-01 REVISION P1

DATE Aug. 2018 DRAWN BY VC

DRAWING STATUS PLANNING

**Summit  
House**



**GENERAL NOTES**

All dimensions to be checked on site prior to commencement of any works, and/or preparation of any shop drawings.

Sizes of and dimensions to any structural elements are indicative only. See structural engineers drawings for actual sizes / dimensions.

Sizes of and dimensions to any service elements are indicative only. See service engineers drawings for actual sizes and dimensions.

This drawing to be read in conjunction with all other Architect's drawings, specifications and other Consultants' information.

All proprietary systems shown on this drawing are to be installed strictly in accordance with the Manufacturers/Suppliers recommended details.

Any discrepancies between information shown on this drawing and any other contract information or manufacturers/suppliers recommendations is to be brought to the attention of the Architect

DO NOT SCALE FROM THIS DRAWING.

**NOTES**



90 HIGH HOLBORN

EAGLE STREET

SUMMIT HOUSE

DANE STREET

P1 Planning Issue 12.11.18

REVISION DATE

**East Elevation**

**EXISTING ELEVATION**

SCALE 1:100 @ A1 (1:200 @ A3)

DWG No. SUM\_EE-02 REVISION P1

DATE Aug. 2018 DRAWN BY VC

DRAWING STATUS PLANNING

**Summit House**



**GENERAL NOTES**

All dimensions to be checked on site prior to commencement of any works, and/or preparation of any shop drawings.

Sizes of and dimensions to any structural elements are indicative only. See structural engineers drawings for actual sizes / dimensions.

Sizes of and dimensions to any service elements are indicative only. See service engineers drawings for actual sizes and dimensions.

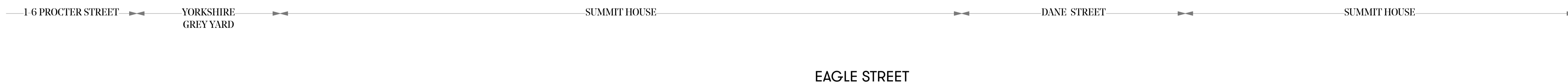
This drawing to be read in conjunction with all other Architect's drawings, specifications and other Consultants' information.

All proprietary systems shown on this drawing are to be installed strictly in accordance with the Manufacturers/Suppliers recommended details.

Any discrepancies between information shown on this drawing and any other contract information or manufacturers/suppliers recommendations is to be brought to the attention of the Architect

DO NOT SCALE FROM THIS DRAWING.

**NOTES**



P1 Planning Issue 12.11.18

REVISION DATE

**South Elevation  
EXISTING ELEVATION**

SCALE 1:100 @ A1 (1:200 @ A3)

DWG No. SUM\_EE-03 REVISION P1

DATE Aug. 2018 DRAWN BY VC

DRAWING STATUS PLANNING

**Summit  
House**





**GENERAL NOTES**

All dimensions to be checked on site prior to commencement of any works, and/or preparation of any shop drawings.

Sizes of and dimensions to any structural elements are indicative only. See structural engineers drawings for actual sizes / dimensions.

Sizes of and dimensions to any service elements are indicative only. See service engineers drawings for actual sizes and dimensions.

This drawing to be read in conjunction with all other Architect's drawings, specifications and other Consultants' information.

All proprietary systems shown on this drawing are to be installed strictly in accordance with the Manufacturers/Suppliers recommended details.

Any discrepancies between information shown on this drawing and any other contract information or manufacturers/suppliers recommendations is to be brought to the attention of the Architect

DO NOT SCALE FROM THIS DRAWING.

**NOTES**

P1	Planning Issue	12.11.18
REVISION		DATE
<b>West Elevation</b>		
<b>EXISTING ELEVATION</b>		
SCALE	1:100 @ A1	(1:200 @ A3)
DWG No.	SUM_EE-04	REVISION P1
DATE	Aug. 2018	DRAWN BY VC
DRAWING STATUS	PLANNING	

**Summit House**

