

GENERAL NOTES

All dimensions to be checked on site prior to commencement of any works, and/or preparation of any shop drawings.

Sizes of and dimensions to any structural elements are indicative only. See structural engineers drawings for actual sizes / dimensions.

Sizes of and dimensions to any service elements are indicative only. See service engineers drawings for actual sizes and dimensions.

This drawing to be read in conjunction with all other Architect's drawings, specifications and other Consultants' information.

All proprietary systems shown on this drawing are to be installed strictly in accordance with the Manufacturers/Suppliers recommended details.

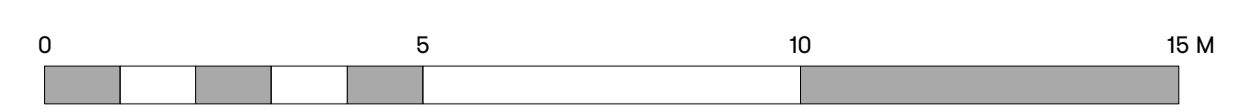
Any discrepancies between information shown on this drawing and any other contract information or manufacturers/suppliers recommendations is to be brought to the attention of the Architect

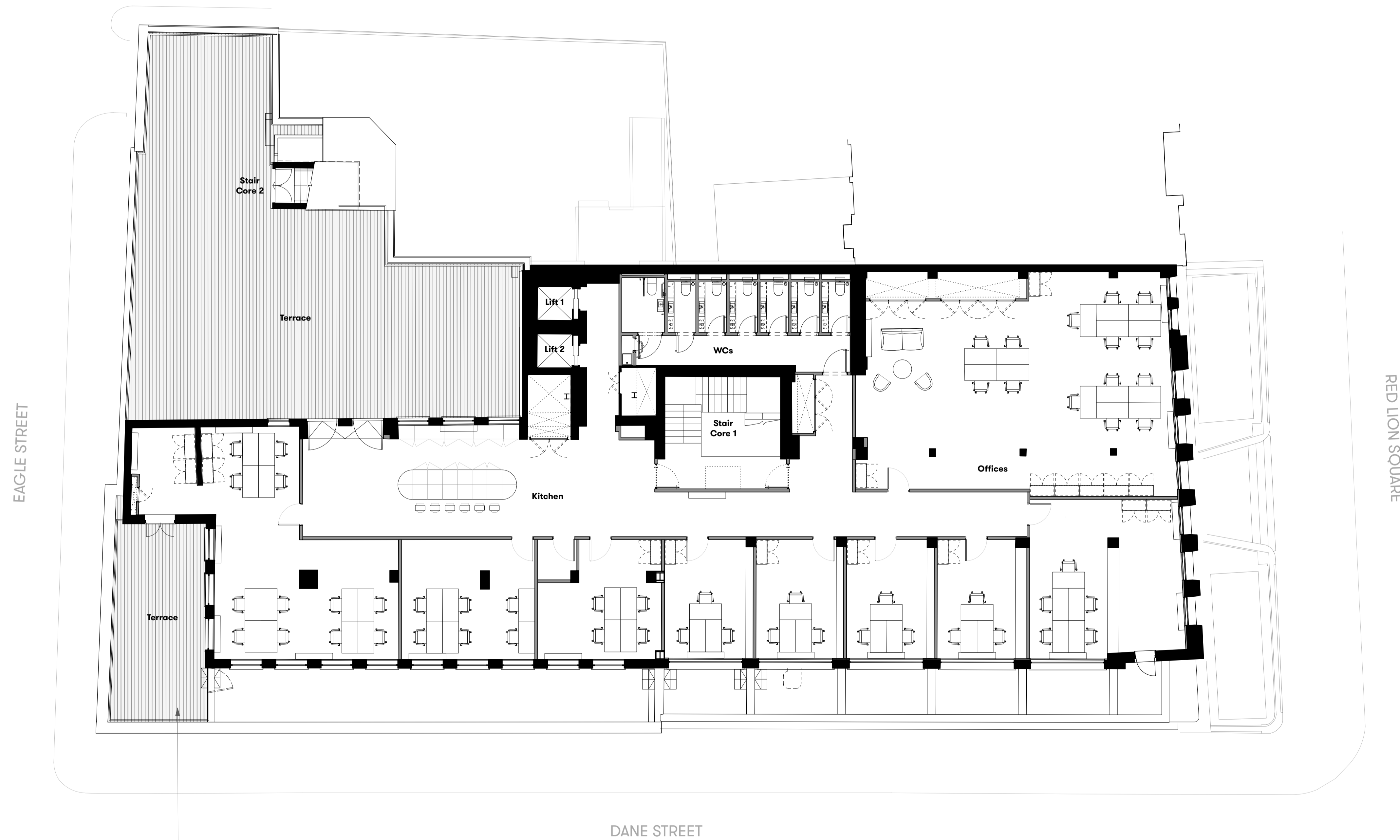
DO NOT SCALE FROM THIS DRAWING.

NOTES

P1	Planning Issue	12.11.18
REVISION		DATE
Third Floor		
GENERAL ARRANGEMENT		
SCALE	1:100 @ A1	(1:200 @ A3)
DWG No.	SUM_PL-03	REVISION P1
DATE	Jul. 2018	DRAWN BY VC
DRAWING STATUS	PLANNING	

Summit House





New composite decking floor finish to match existing terrace.
 New balustrade to meet loading requirements, to match existing terrace balustrade.

GENERAL NOTES

All dimensions to be checked on site prior to commencement of any works, and/or preparation of any shop drawings.

Sizes of and dimensions to any structural elements are indicative only. See structural engineers drawings for actual sizes / dimensions.

Sizes of and dimensions to any service elements are indicative only. See service engineers drawings for actual sizes and dimensions.

This drawing to be read in conjunction with all other Architect's drawings, specifications and other Consultants' information.

All proprietary systems shown on this drawing are to be installed strictly in accordance with the Manufacturers/Suppliers recommended details.

Any discrepancies between information shown on this drawing and any other contract information or manufacturers/suppliers recommendations is to be brought to the attention of the Architect

DO NOT SCALE FROM THIS DRAWING.

NOTES

P1 Planning Issue 12.11.18

REVISION DATE

**Fourth Floor
 GENERAL ARRANGEMENT**

SCALE 1:100 @ A1 (1:200 @ A3)

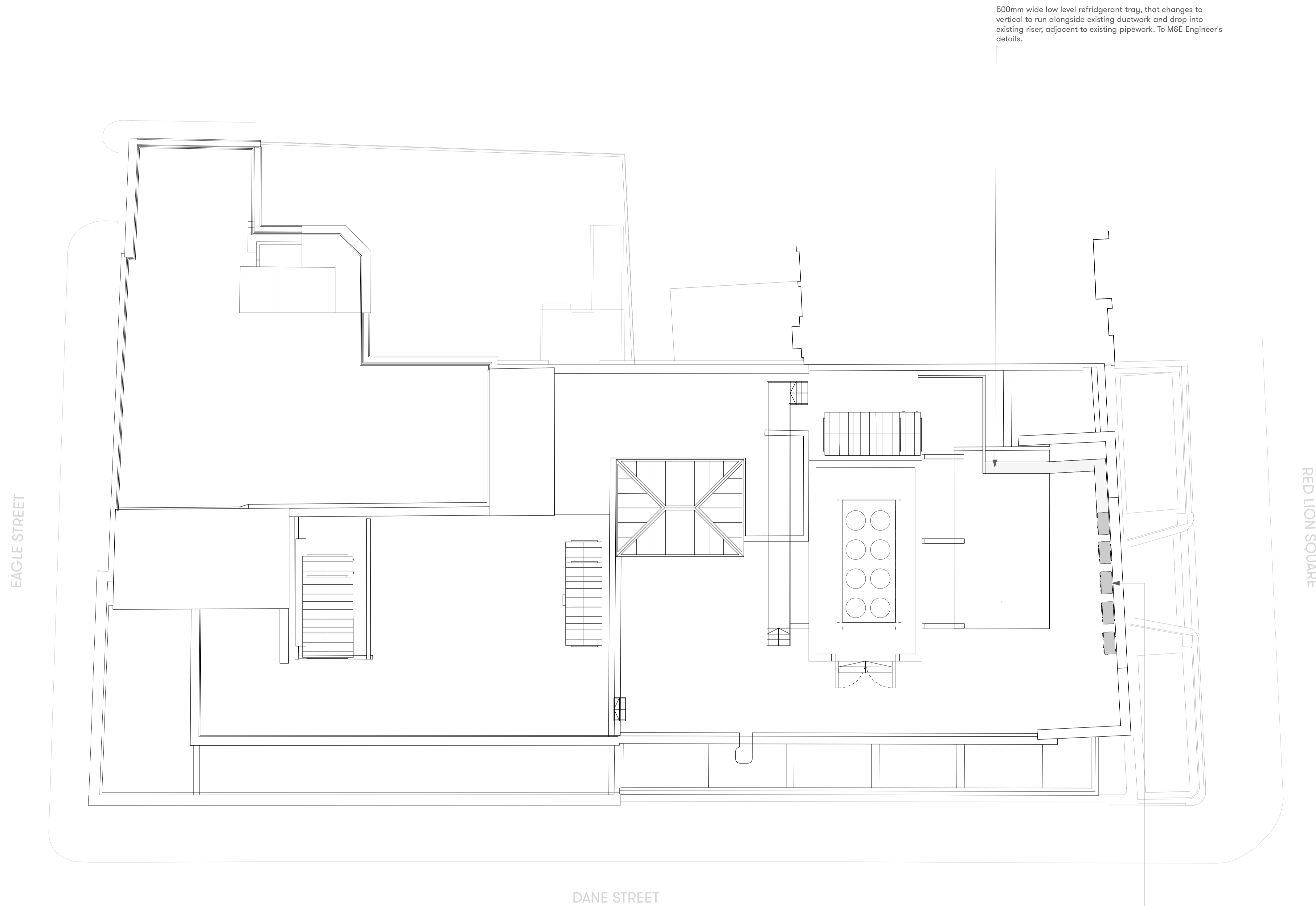
DWG No. SUM_PL-04 REVISION P1

DATE Jul. 2018 DRAWN BY VC

DRAWING STATUS PLANNING

**Summit
 House**





500mm wide low level refrigerant tray, that changes to vertical to run alongside existing ductwork and drop into existing riser, adjacent to existing pipework. To M&E Engineer's details.

Proposed side discharging condensing units, located in area of previously consented tenant plant zone. Height of units to not exceed the existing parapet wall.

GENERAL NOTES

All dimensions to be checked on site prior to commencement of any works, and/or preparation of any shop drawings.

Sizes of and dimensions to any structural elements are indicative only. See structural engineers drawings for actual sizes / dimensions.

Sizes of and dimensions to any service elements are indicative only. See service engineers drawings for actual sizes and dimensions.

This drawing to be read in conjunction with all other Architect's drawings, specifications and other Consultants' information.

All proprietary systems shown on this drawing are to be installed strictly in accordance with the Manufacturers/Suppliers recommended details.

Any discrepancies between information shown on this drawing and any other contract information or manufacturers/suppliers recommendations is to be brought to the attention of the Architect

DO NOT SCALE FROM THIS DRAWING.

NOTES

P1 Planning Issue 12.11.18

REVISION DATE

Roof Level

GENERAL ARRANGEMENT

SCALE 1:100 @ A1 (1:200 @ A3)

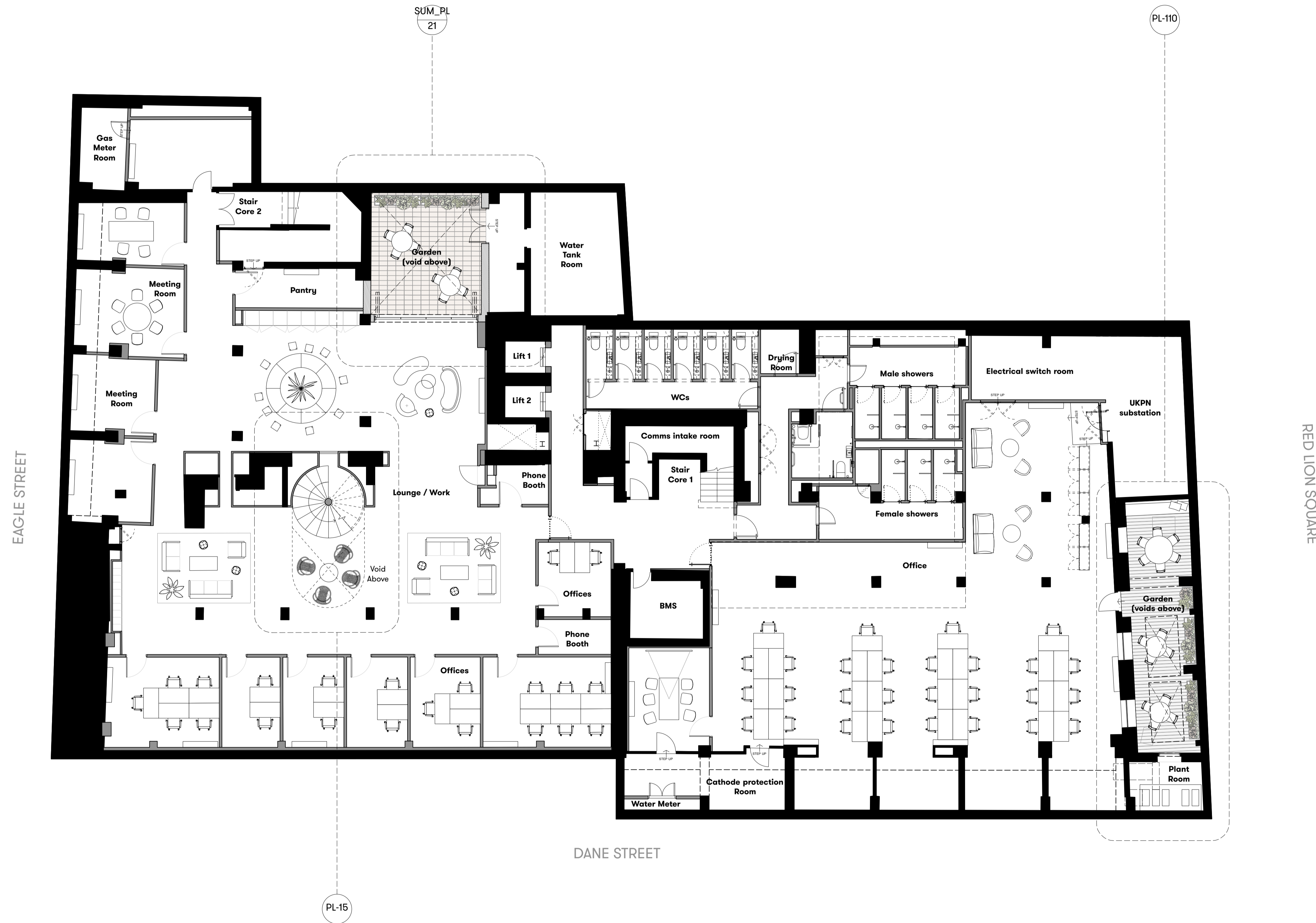
DWG No. SUM_PL-05 REVISION P1

DATE Jul. 2018 DRAWN BY VC

DRAWING STATUS PLANNING

Summit House





GENERAL NOTES

All dimensions to be checked on site prior to commencement of any works, and/or preparation of any shop drawings.

Sizes of and dimensions to any structural elements are indicative only. See structural engineers drawings for actual sizes / dimensions.

Sizes of and dimensions to any service elements are indicative only. See service engineers drawings for actual sizes and dimensions.

This drawing to be read in conjunction with all other Architect's drawings, specifications and other Consultants' information.

All proprietary systems shown on this drawing are to be installed strictly in accordance with the Manufacturers/Suppliers recommended details.

Any discrepancies between information shown on this drawing and any other contract information or manufacturers/suppliers recommendations is to be brought to the attention of the Architect

DO NOT SCALE FROM THIS DRAWING.

NOTES
Loose furniture layout indicative only.

P1 Planning Issue 12.11.18

REVISION DATE

**Lower Ground Floor
GENERAL ARRANGEMENT**

SCALE 1:100 @ A1 (1:200 @ A3)

DWG No. SUM_PL-B1 REVISION P1

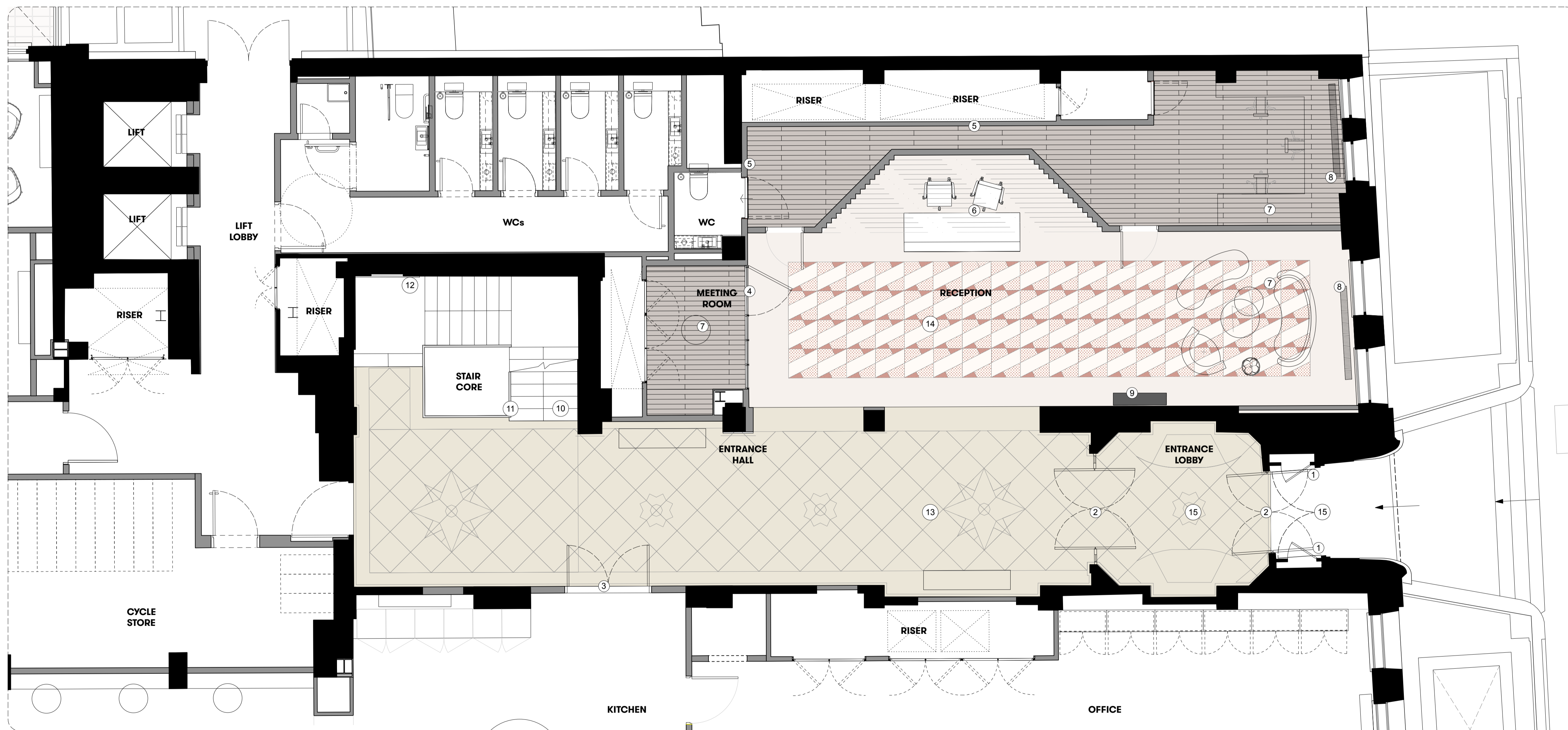
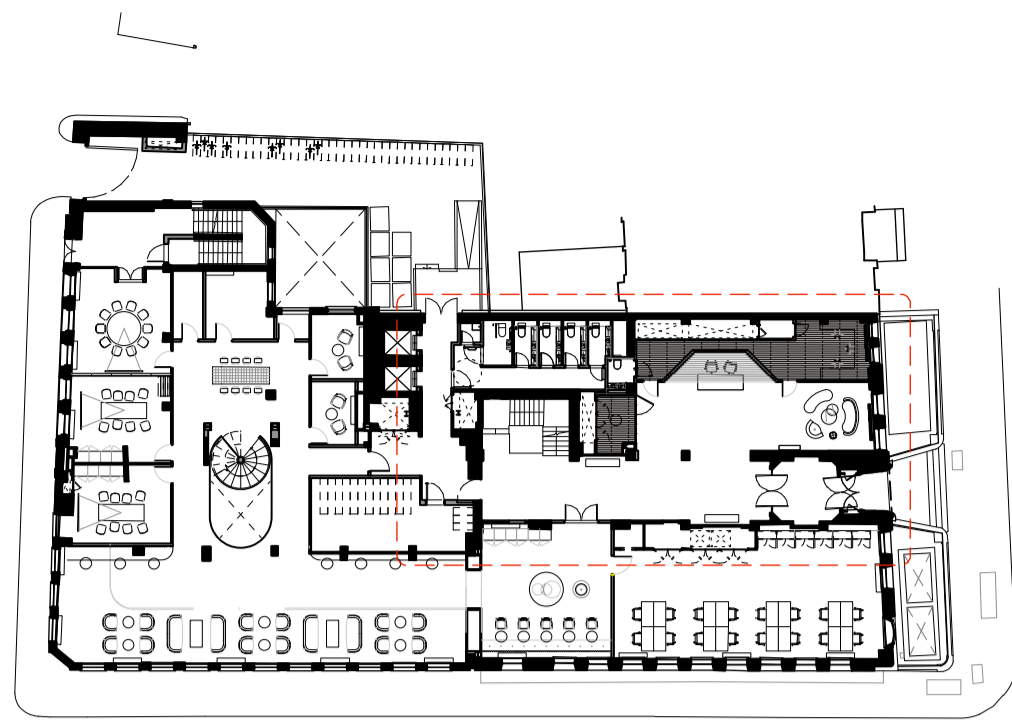
DATE Jul. 2018 DRAWN BY VC

DRAWING STATUS PLANNING

**Summit
House**



KEY



GENERAL NOTES

All dimensions to be checked on site prior to commencement of any works, and/or preparation of any shop drawings.

Sizes of and dimensions to any structural elements are indicative only. See structural engineers drawings for actual sizes / dimensions.

Sizes of and dimensions to any service elements are indicative only. See service engineers drawings for actual sizes and dimensions.

This drawing to be read in conjunction with all other Architect's drawings, specifications and other Consultants' information.

All proprietary systems shown on this drawing are to be installed strictly in accordance with the Manufacturers/Suppliers recommended details.

Any discrepancies between information shown on this drawing and any other contract information or manufacturers/suppliers recommendations is to be brought to the attention of the Architect

DO NOT SCALE FROM THIS DRAWING.

NOTES

- ① Original timber carved entrance doors
- ② Black framed glass entrance doors
- ③ Timber veneered door to office space
- ④ Black metal framed glazed screen
- ⑤ Painted wall with mouldings to match existing
- ⑥ New timber reception desk
- ⑦ New loose furniture and rugs
- ⑧ Black metal floor mounted radiator
- ⑨ Black metal encased floor mounted FCU
- ⑩ Stone clad stairs
- ⑪ Black metal balustrade with brushed stainless steel handrail
- ⑫ Original single glazed black metal framed windows with white coloured secondary glazing
- ⑬ Original stone tiled flooring
- ⑭ Timber parquet flooring
- ⑮ Entrance matting
- ⑯ New tiled flooring with feature inlaid pattern

P1 Planning Issue 12.11.18

REVISION DATE

**Entrance Hall & Reception
PROPOSED ARRANGEMENT**

SCALE 1:50 @ A1 (1:100 @ A3)

DWG No. SUM_PL-10 REVISION P1

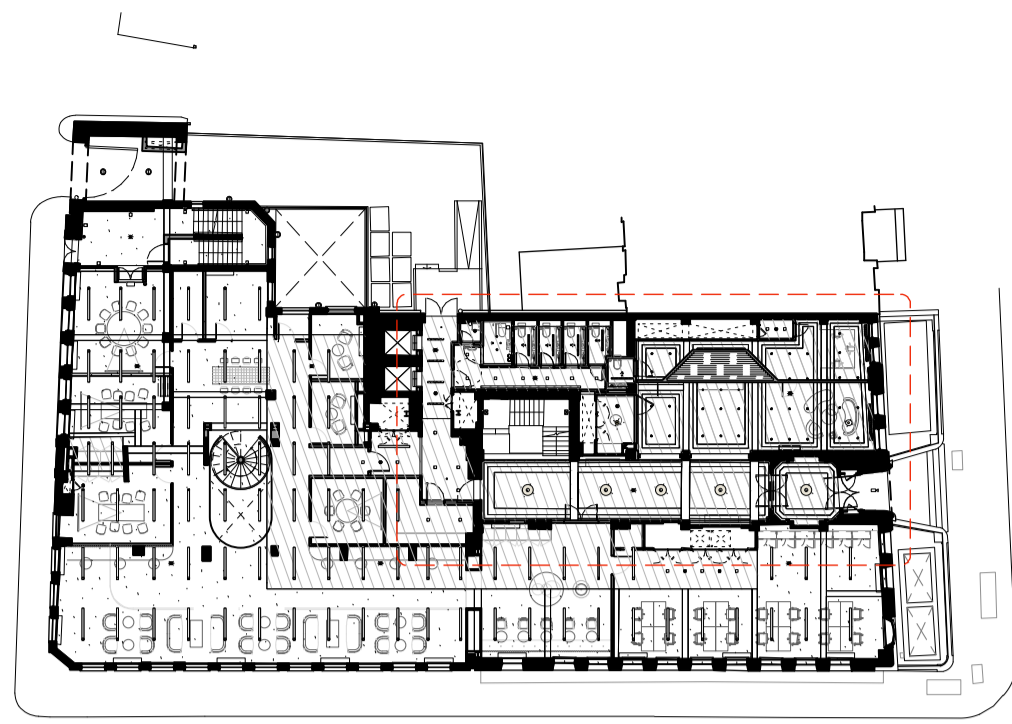
DATE Oct. 2018 DRAWN BY VC

DRAWING STATUS PLANNING

**Summit
House**



KEY



GENERAL NOTES

All dimensions to be checked on site prior to commencement of any works, and/or preparation of any shop drawings.

Sizes of and dimensions to any structural elements are indicative only. See structural engineers drawings for actual sizes / dimensions.

Sizes of and dimensions to any service elements are indicative only. See service engineers drawings for actual sizes and dimensions.

This drawing to be read in conjunction with all other Architect's drawings, specifications and other Consultants' information.

All proprietary systems shown on this drawing are to be installed strictly in accordance with the Manufacturers/Suppliers recommended details.

Any discrepancies between information shown on this drawing and any other contract information or manufacturers/suppliers recommendations is to be brought to the attention of the Architect

DO NOT SCALE FROM THIS DRAWING.

NOTES

- ① Suspended plasterboard, painted ceiling
- ② Plasterboard lined, painted, downstand beams
- ③ Plasterboard lined, painted ceiling
- ④ New feature pendants to replace existing
- ⑤ New wall lights to replace existing
- ⑥ New feature pendant light to seating area
- ⑦ New pendant to replace existing
- ⑧ Recessed downlight 01
- ⑨ Recessed downlight 02
- ⑩ Smoke detector and sounder
- ⑪ Linear pendant light, black
- ⑫ Linear surface mounted light
- ⑬ Flashing beacon
- ⑭ New recessed spotlights to match existing

P1 Planning Issue 12.11.18

REVISION DATE

**Entrance Hall & Reception
PROPOSED CEILING PLAN**

SCALE 1:50 @ A1 (1:100 @ A3)

DWG No. SUM_PL-11 REVISION P1

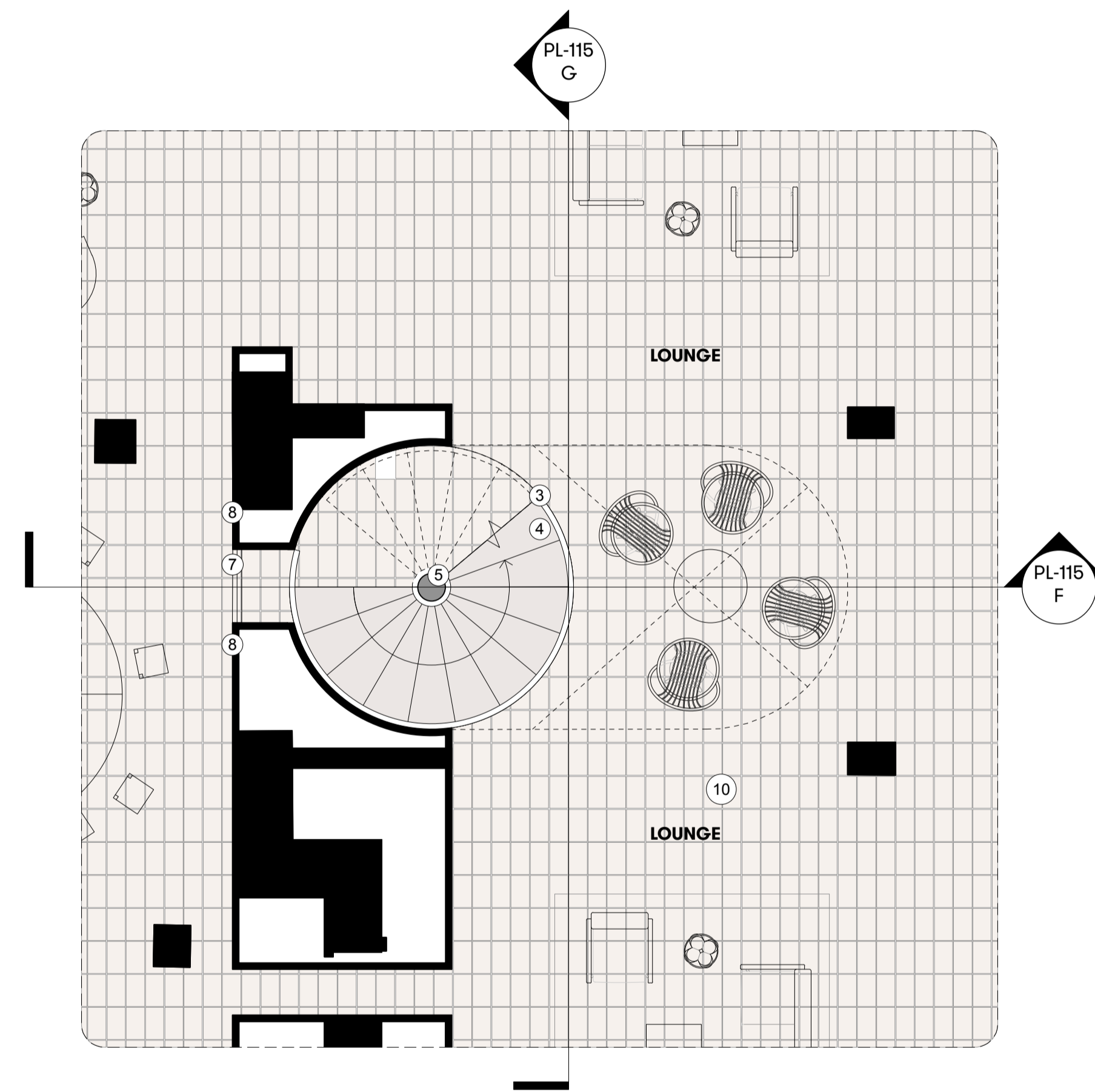
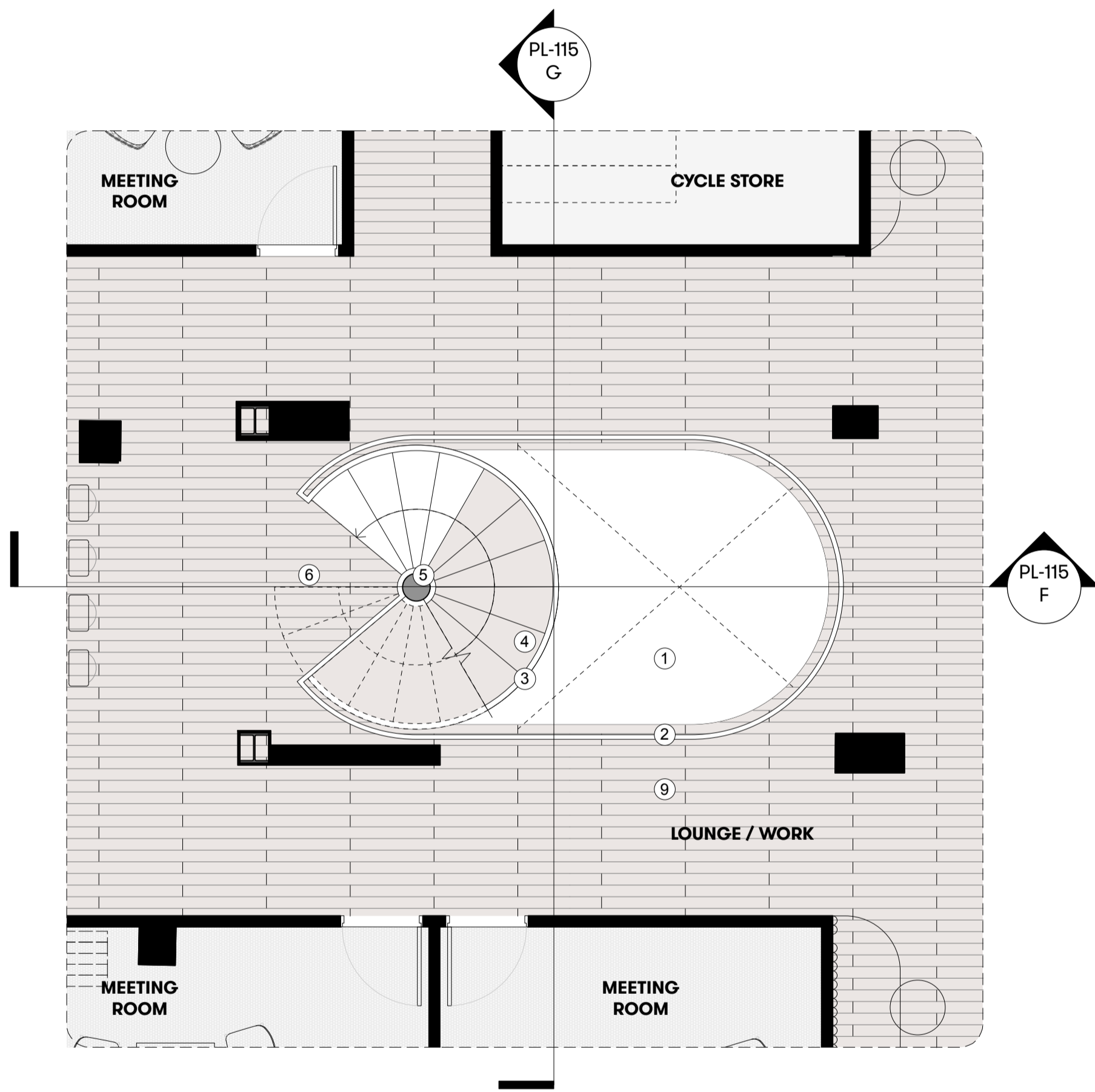
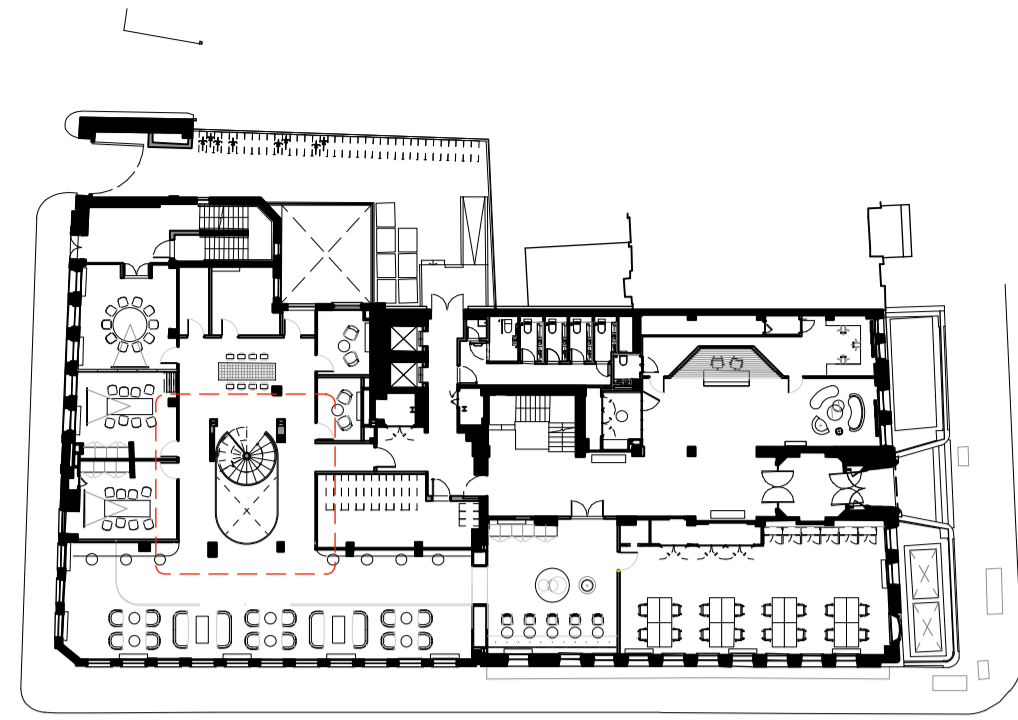
DATE Oct. 2018 DRAWN BY VC

DRAWING STATUS PLANNING

**Summit
House**



KEY



1 Ground Floor Plan - Stairwell
Scale 1:50 at A1

2 Lower Ground Floor Plan - Stairwell
Scale 1:50 at A1

GENERAL NOTES

All dimensions to be checked on site prior to commencement of any works, and/or preparation of any shop drawings.

Sizes of and dimensions to any structural elements are indicative only. See structural engineers drawings for actual sizes / dimensions.

Sizes of and dimensions to any service elements are indicative only. See service engineers drawings for actual sizes and dimensions.

This drawing to be read in conjunction with all other Architect's drawings, specifications and other Consultants' information.

All proprietary systems shown on this drawing are to be installed strictly in accordance with the Manufacturers/Suppliers recommended details.

Any discrepancies between information shown on this drawing and any other contract information or manufacturers/suppliers recommendations is to be brought to the attention of the Architect

DO NOT SCALE FROM THIS DRAWING.

NOTES

- ① Light well / Void to Lower Ground Floor
- ② Metal handrail and guarding to cut out
- ③ Metal handrail and guarding to stair
- ④ Treads with closed risers
- ⑤ Metal central support pole and balustrade
- ⑥ Ground floor platform landing
- ⑦ Glazed opening to provide views through
- ⑧ Plasterboard boxing out of existing walls / structure
- ⑨ Timber floor to lounge (ground floor)
- ⑩ Terracotta floor tiles to lounge (lower ground floor)

P1 Planning Issue 12.11.18

REVISION DATE

**Stairwell Details
PROPOSED ARRANGEMENT**

SCALE 1:50 @ A1 (1:100 @ A3)

DWG No. SUM_PL-15 REVISION P1

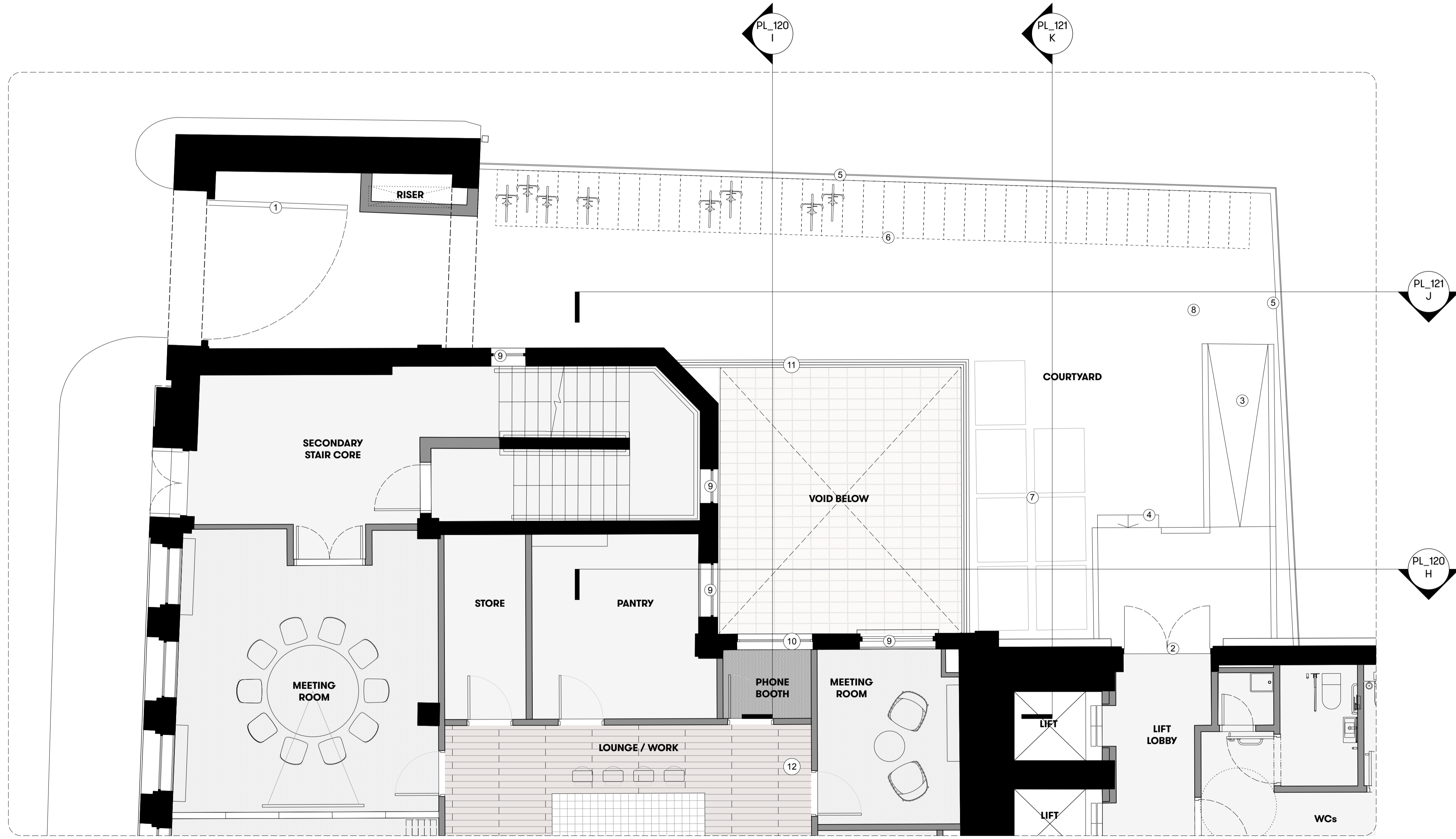
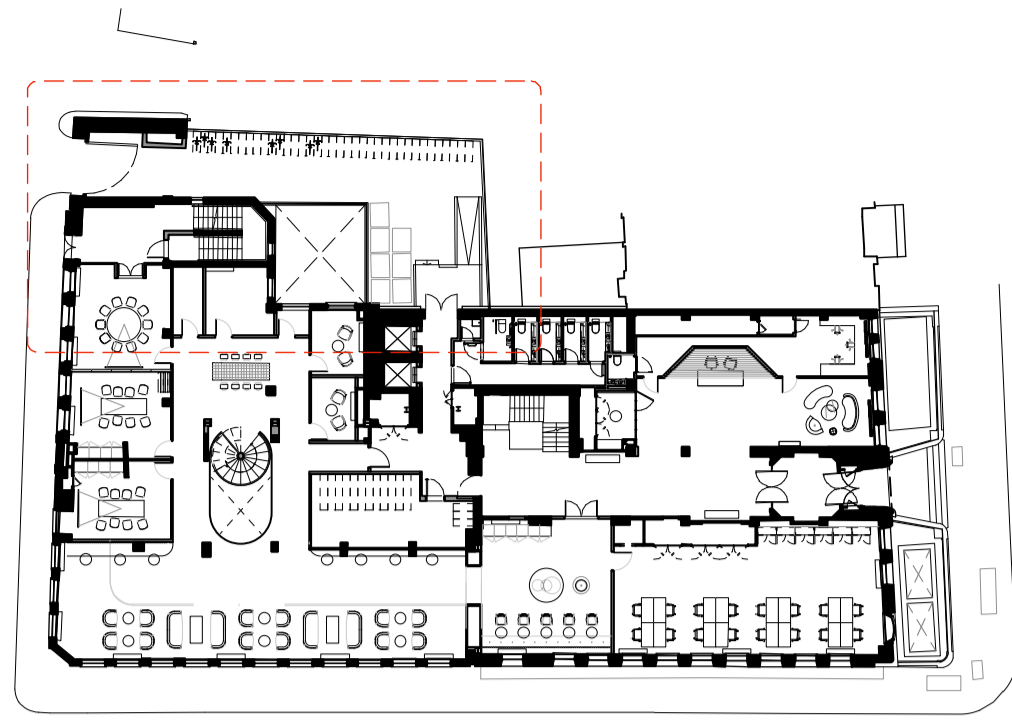
DATE Oct. 2018 DRAWN BY VC

DRAWING STATUS PLANNING

**Summit
House**



KEY



GENERAL NOTES

All dimensions to be checked on site prior to commencement of any works, and/or preparation of any shop drawings.

Sizes of and dimensions to any structural elements are indicative only. See structural engineers drawings for actual sizes / dimensions.

Sizes of and dimensions to any service elements are indicative only. See service engineers drawings for actual sizes and dimensions.

This drawing to be read in conjunction with all other Architect's drawings, specifications and other Consultants' information.

All proprietary systems shown on this drawing are to be installed strictly in accordance with the Manufacturers/Suppliers recommended details.

Any discrepancies between information shown on this drawing and any other contract information or manufacturers/suppliers recommendations is to be brought to the attention of the Architect

DO NOT SCALE FROM THIS DRAWING.

NOTES

- ① Black painted metal entrance gate retained
- ② Black framed glass entrance door retained
- ③ Concrete ramp with black metal balustrade retained
- ④ Concrete stairs with black metal balustrade retained
- ⑤ Black painted metal fencing and anti-climb guard
- ⑥ New metal vertical cycle storage
- ⑦ Refuse storage retained
- ⑧ Asphalt finish to courtyard retained
- ⑨ Existing black painted metal framed windows
- ⑩ New black metal framed double glazed window to existing blocked up opening.
- ⑪ New black metal balustrade to new void
- ⑫ Timber flooring to lounge / work area

P1 Planning Issue 12.11.18

REVISION DATE

**Courtyard - Ground Floor
PROPOSED ARRANGMENT**

SCALE 1:50 @ A1 (1:100 @ A3)

DWG No. SUM_PL-20 REVISION P1

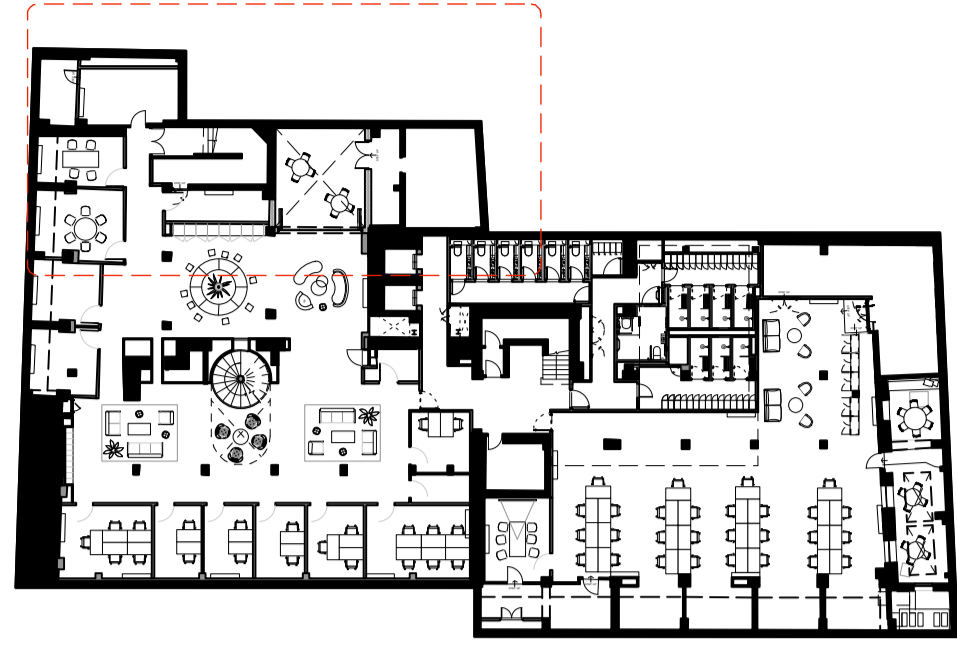
DATE Oct. 2018 DRAWN BY VC

DRAWING STATUS PLANNING

**Summit
House**



KEY



GENERAL NOTES

All dimensions to be checked on site prior to commencement of any works, and/or preparation of any shop drawings.

Sizes of and dimensions to any structural elements are indicative only. See structural engineers drawings for actual sizes / dimensions.

Sizes of and dimensions to any service elements are indicative only. See service engineers drawings for actual sizes and dimensions.

This drawing to be read in conjunction with all other Architect's drawings, specifications and other Consultants' information.

All proprietary systems shown on this drawing are to be installed strictly in accordance with the Manufacturers/Suppliers recommended details.

Any discrepancies between information shown on this drawing and any other contract information or manufacturers/suppliers recommendations is to be brought to the attention of the Architect

DO NOT SCALE FROM THIS DRAWING.

NOTES

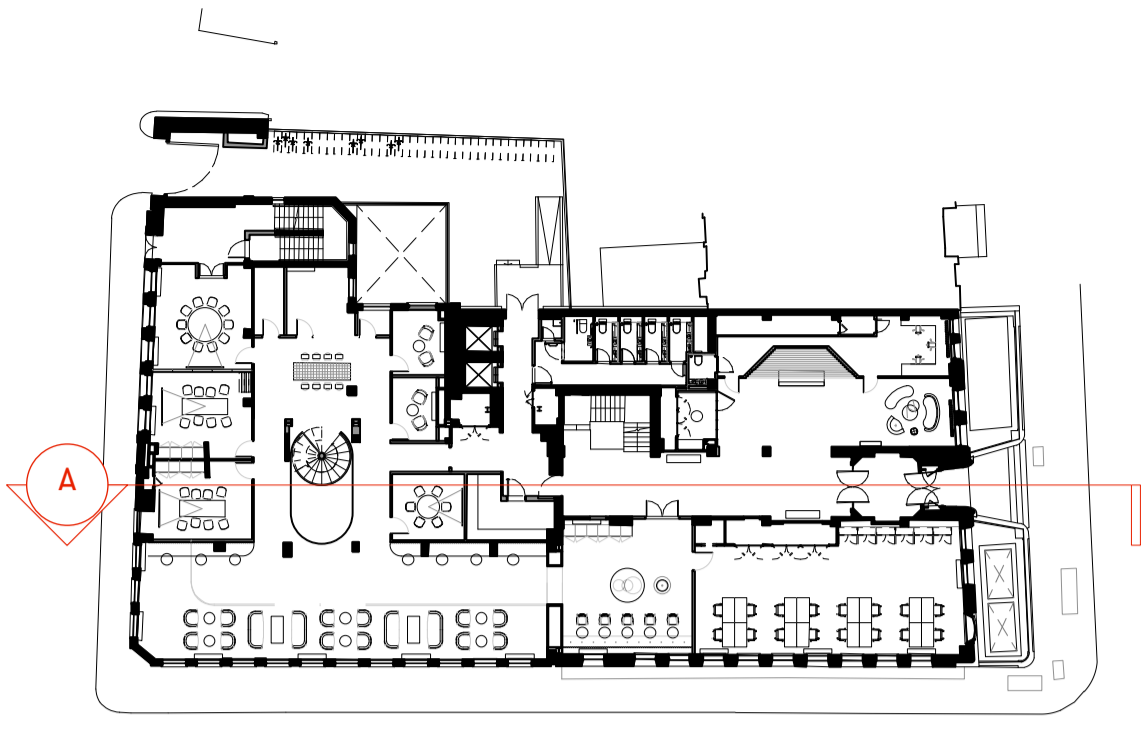
- ① Black metal framed bi-folding glass doors
- ② Terracotta floor tiles to external garden
- ③ External masonry wall, finished internally with painted plasterboard and externally with terracotta wall tiles to match floor
- ④ New painted metal door
- ⑤ Existing walls waterproofed, made good and clad in terracotta wall tiles to match floor
- ⑥ Terracotta floor tiles to lounge

P1	Planning Issue	12.11.18
REVISION		DATE
Courtyard - Lower Ground Floor PROPOSED ARRANGEMENT		
SCALE	1:50 @ A1	(1:100 @ A3)
DWG No.	SUM_PL-21	REVISION P1
DATE	Oct. 2018	DRAWN BY VC
DRAWING STATUS	PLANNING	

**Summit
House**

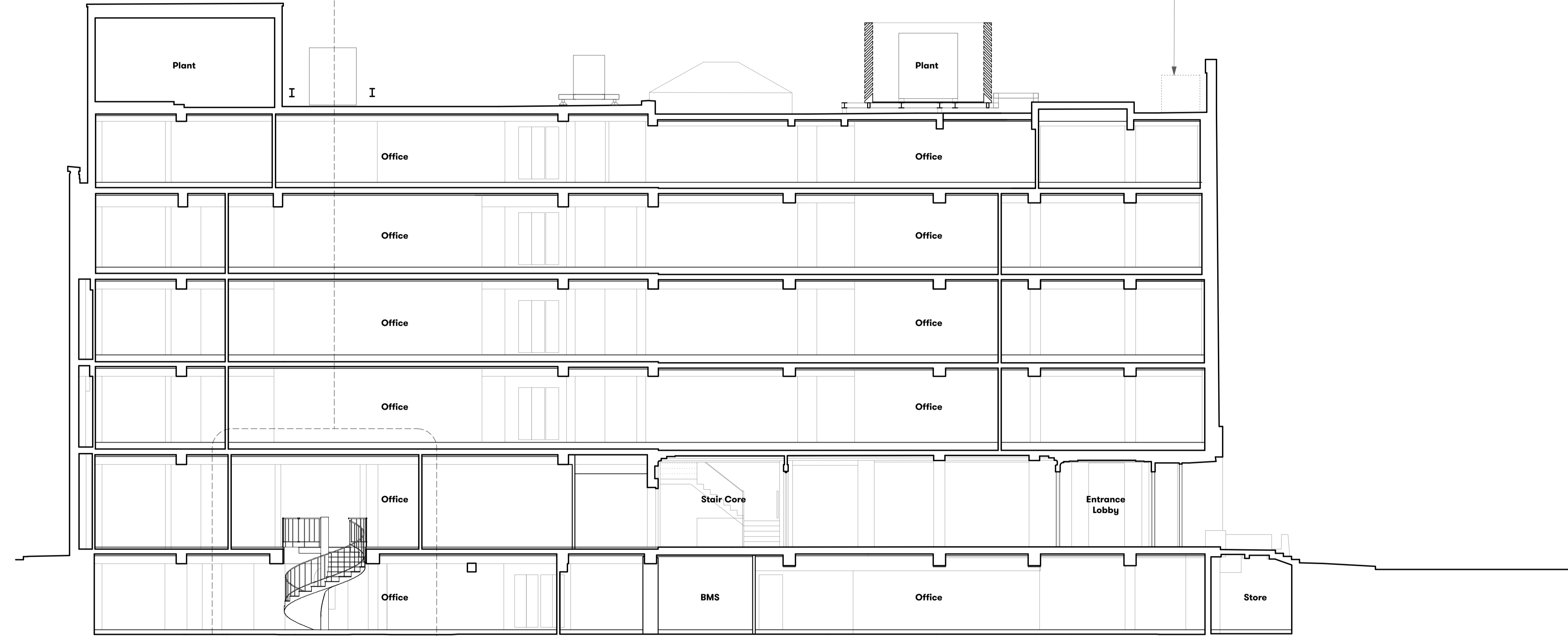


KEY



PL-115

Proposed side discharging condensing units and associated pipework / traywork, located in area of previously consented tenant plant. Height of units to not exceed the existing parapet wall. To M&E Engineer's details.



EAGLE STREET

RED LION SQUARE

GENERAL NOTES

All dimensions to be checked on site prior to commencement of any works, and/or preparation of any shop drawings.

Sizes of and dimensions to any structural elements are indicative only. See structural engineers drawings for actual sizes / dimensions.

Sizes of and dimensions to any service elements are indicative only. See service engineers drawings for actual sizes and dimensions.

This drawing to be read in conjunction with all other Architect's drawings, specifications and other Consultants' information.

All proprietary systems shown on this drawing are to be installed strictly in accordance with the Manufacturers/Suppliers recommended details.

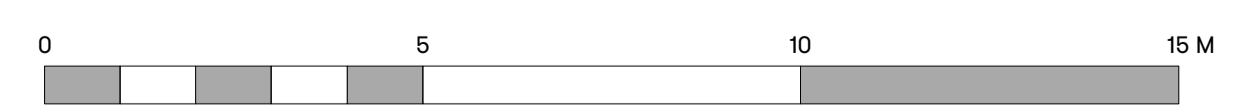
Any discrepancies between information shown on this drawing and any other contract information or manufacturers/suppliers recommendations is to be brought to the attention of the Architect

DO NOT SCALE FROM THIS DRAWING.

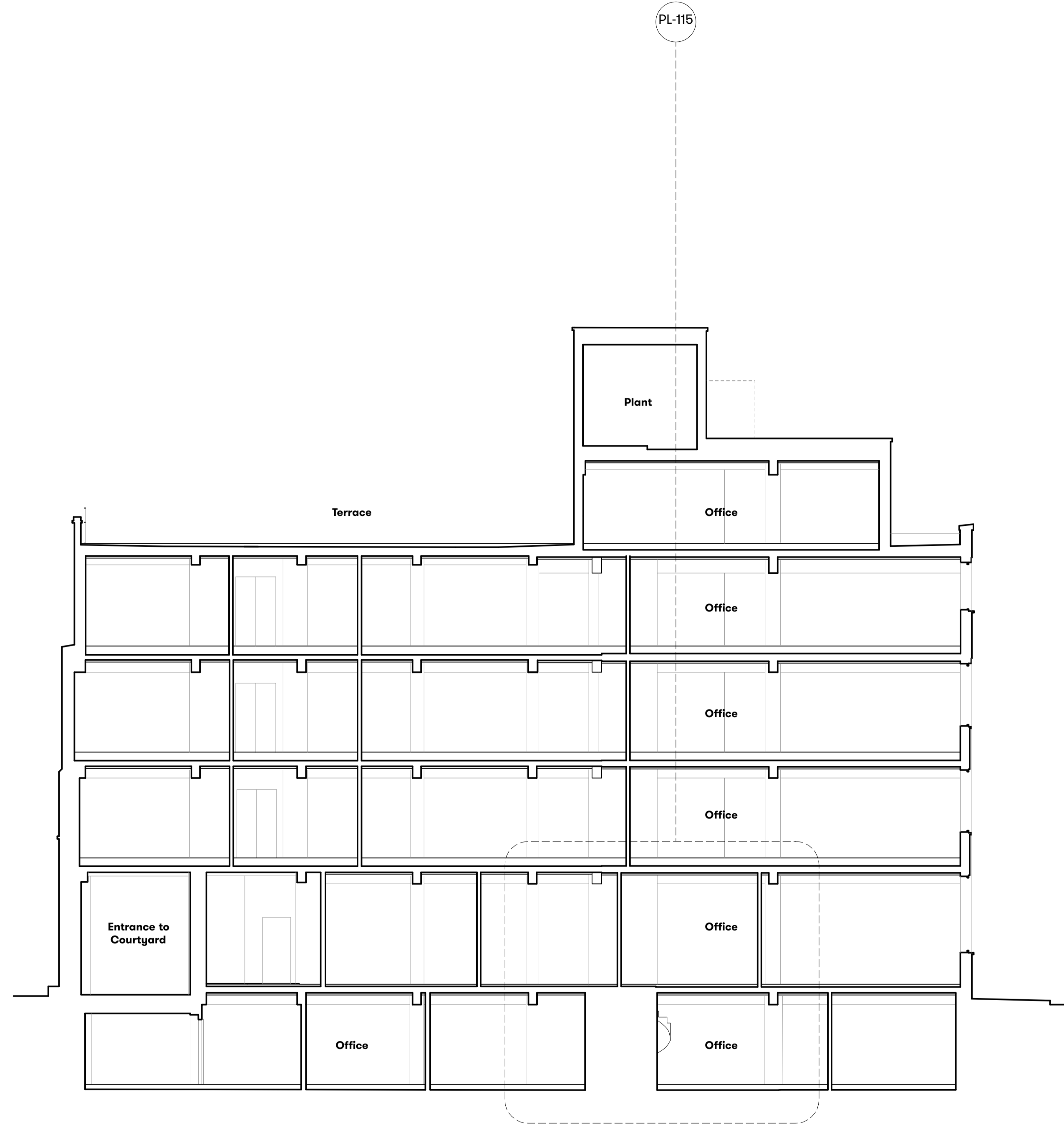
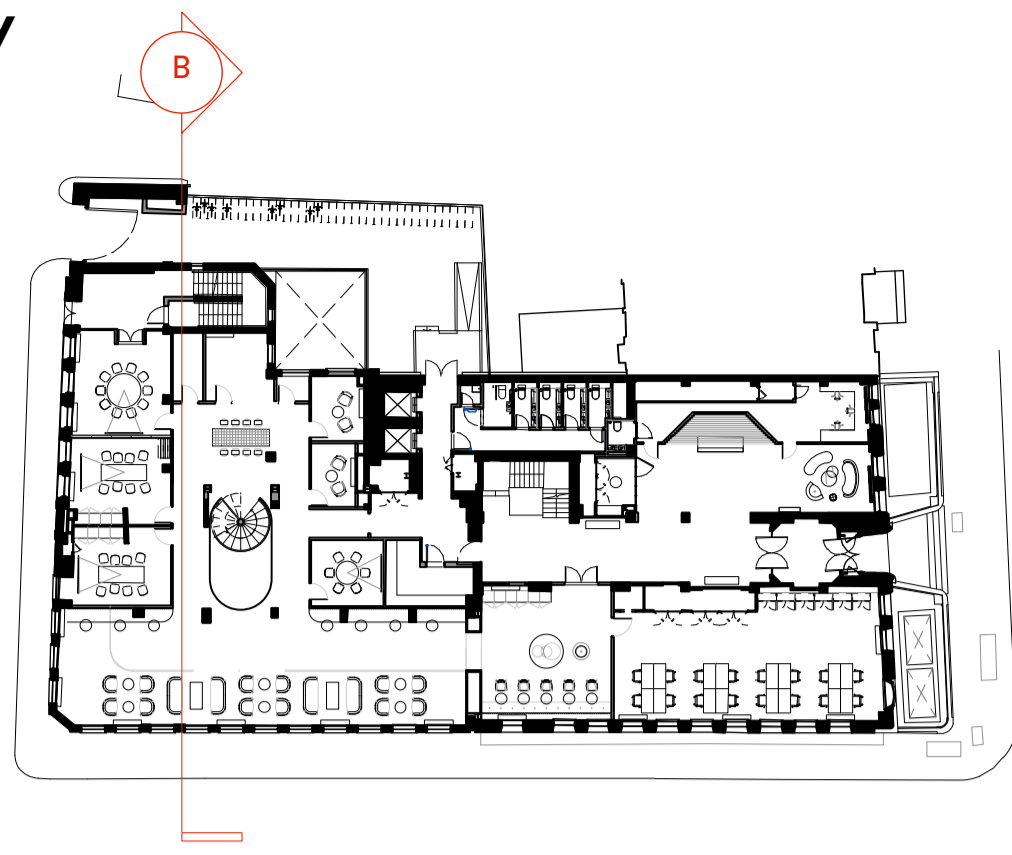
NOTES

P1	Planning Issue	12.11.18
REVISION		DATE
Section A		
GENERAL SECTION		
SCALE	1:100 @ A1	(1:200 @ A3)
DWG No.	SUM_PL-101	REVISION P1
DATE	Aug. 2018	DRAWN BY VC
DRAWING STATUS	PLANNING	

Summit House



KEY



YORKSHIRE
GREY YARD

DANE STREET

GENERAL NOTES

All dimensions to be checked on site prior to commencement of any works, and/or preparation of any shop drawings.

Sizes of and dimensions to any structural elements are indicative only. See structural engineers drawings for actual sizes / dimensions.

Sizes of and dimensions to any service elements are indicative only. See service engineers drawings for actual sizes and dimensions.

This drawing to be read in conjunction with all other Architect's drawings, specifications and other Consultants' information.

All proprietary systems shown on this drawing are to be installed strictly in accordance with the Manufacturers/Suppliers recommended details.

Any discrepancies between information shown on this drawing and any other contract information or manufacturers/suppliers recommendations is to be brought to the attention of the Architect

DO NOT SCALE FROM THIS DRAWING.

NOTES

P1 Planning Issue 12.11.18

REVISION DATE

**Section B
PROPOSED SECTION**

SCALE 1:100 @ A1 (1:200 @ A3)

DWG No. SUM_PL-102 REVISION P1

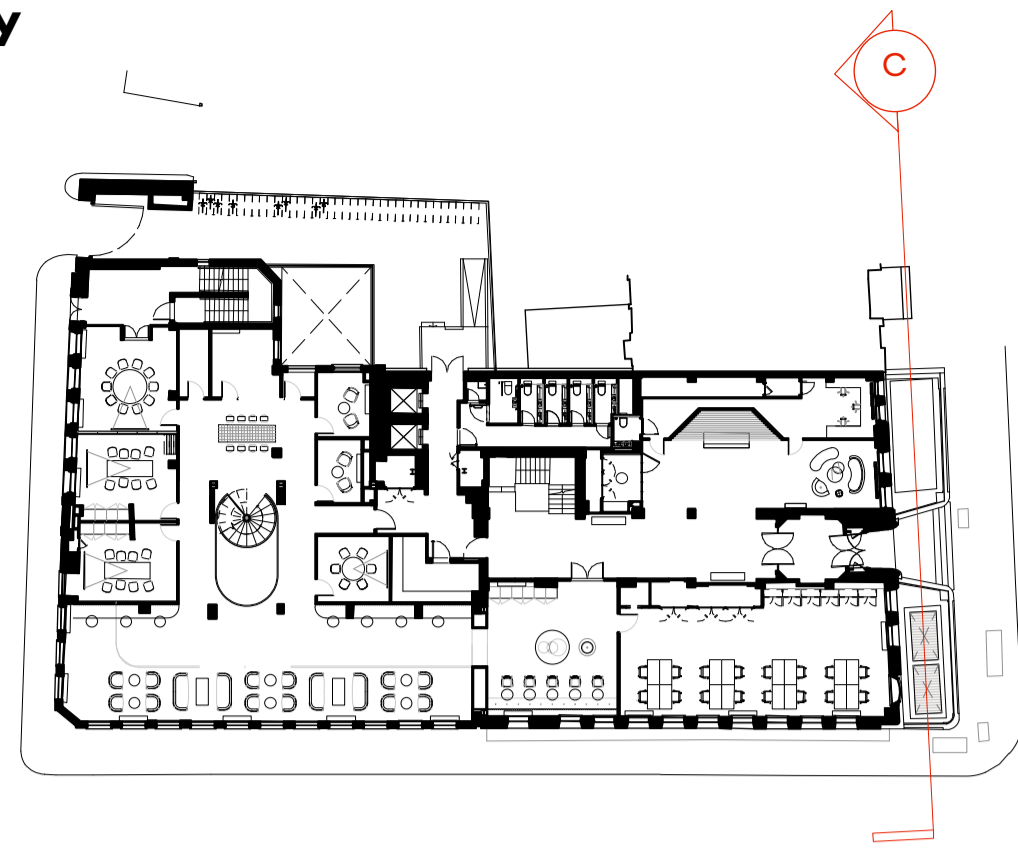
DATE Aug. 2018 DRAWN BY VC

DRAWING STATUS PLANNING

**Summit
House**



KEY



DANE STREET

11 RED LION SQUARE

GENERAL NOTES

All dimensions to be checked on site prior to commencement of any works, and/or preparation of any shop drawings.

Sizes of and dimensions to any structural elements are indicative only. See structural engineers drawings for actual sizes / dimensions.

Sizes of and dimensions to any service elements are indicative only. See service engineers drawings for actual sizes and dimensions.

This drawing to be read in conjunction with all other Architect's drawings, specifications and other Consultants' information.

All proprietary systems shown on this drawing are to be installed strictly in accordance with the Manufacturers/Suppliers recommended details.

Any discrepancies between information shown on this drawing and any other contract information or manufacturers/suppliers recommendations is to be brought to the attention of the Architect

DO NOT SCALE FROM THIS DRAWING.

NOTES

P1 Planning Issue 12.11.18

REVISION DATE

Section C
PROPOSED SECTION

SCALE 1:100 @ A1 (1:200 @ A3)

DWG No. SUM_PL-103 REVISION P1

DATE Aug. 2018 DRAWN BY VC

DRAWING STATUS PLANNING

Summit
House

