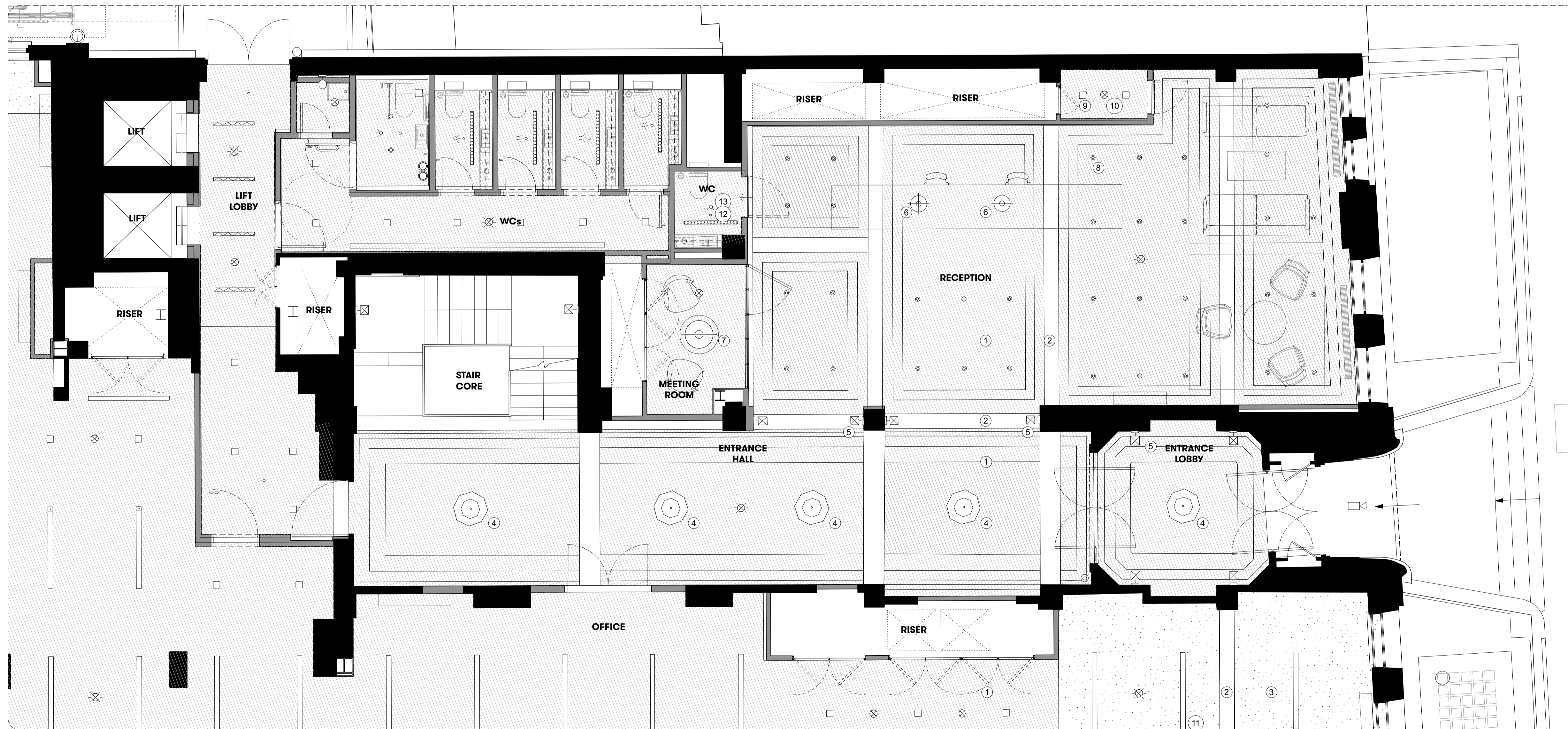
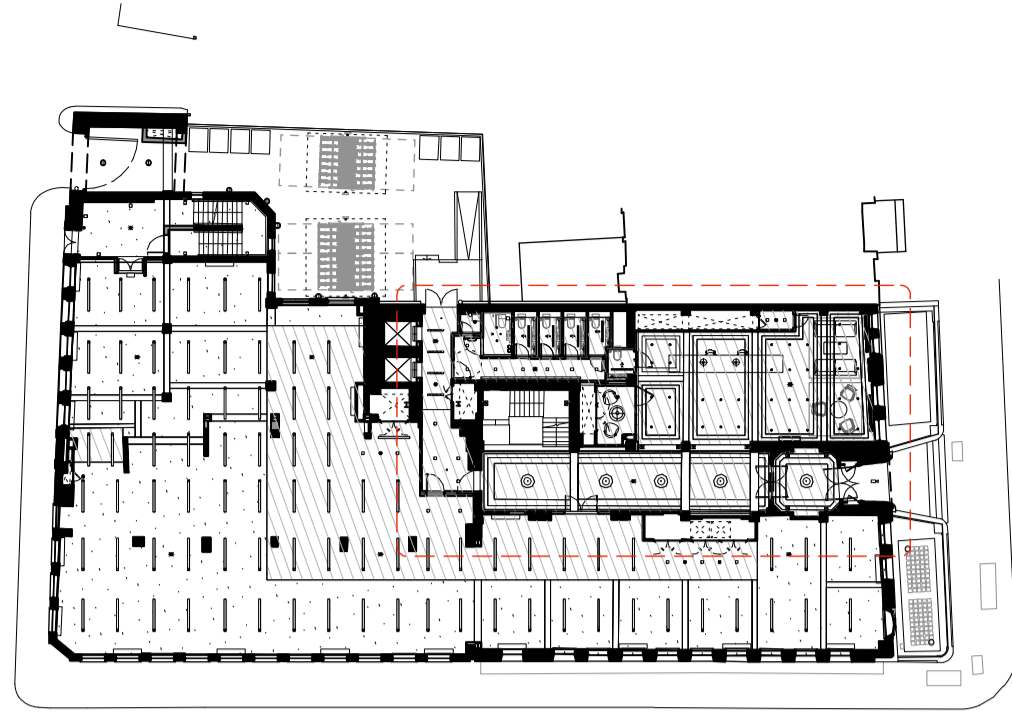


KEY



GENERAL NOTES

All dimensions to be checked on site prior to commencement of any works, and/or preparation of any shop drawings.

Sizes of and dimensions to any structural elements are indicative only. See structural engineers drawings for actual sizes / dimensions.

Sizes of and dimensions to any service elements are indicative only. See service engineers drawings for actual sizes and dimensions.

This drawing to be read in conjunction with all other Architect's drawings, specifications and other Consultants' information.

All proprietary systems shown on this drawing are to be installed strictly in accordance with the Manufacturers/Suppliers recommended details.

Any discrepancies between information shown on this drawing and any other contract information or manufacturers/suppliers recommendations is to be brought to the attention of the Architect

DO NOT SCALE FROM THIS DRAWING.

NOTES

- ① Suspended plasterboard, painted ceiling
- ② Plasterboard lined, painted, downstand beams
- ③ Plasterboard lined, painted ceiling
- ④ Replica lighting pendant
- ⑤ Bronze coloured wall light
- ⑥ Copper pendant light
- ⑦ Black pendant light
- ⑧ Recessed downlight 01
- ⑨ Recessed downlight 02
- ⑩ Smoke detector and sounder
- ⑪ Linear pendant light, black
- ⑫ Linear surface mounted light
- ⑬ Flashing beacon

P1 Planning Issue 12.11.18

REVISION DATE

**Entrance Hall & Reception  
EXISTING CEILING PLAN**

SCALE 1:50 @ A1 (1:100 @ A3)

DWG No. SUM\_EX-11 REVISION P1

DATE Oct. 2018 DRAWN BY VC

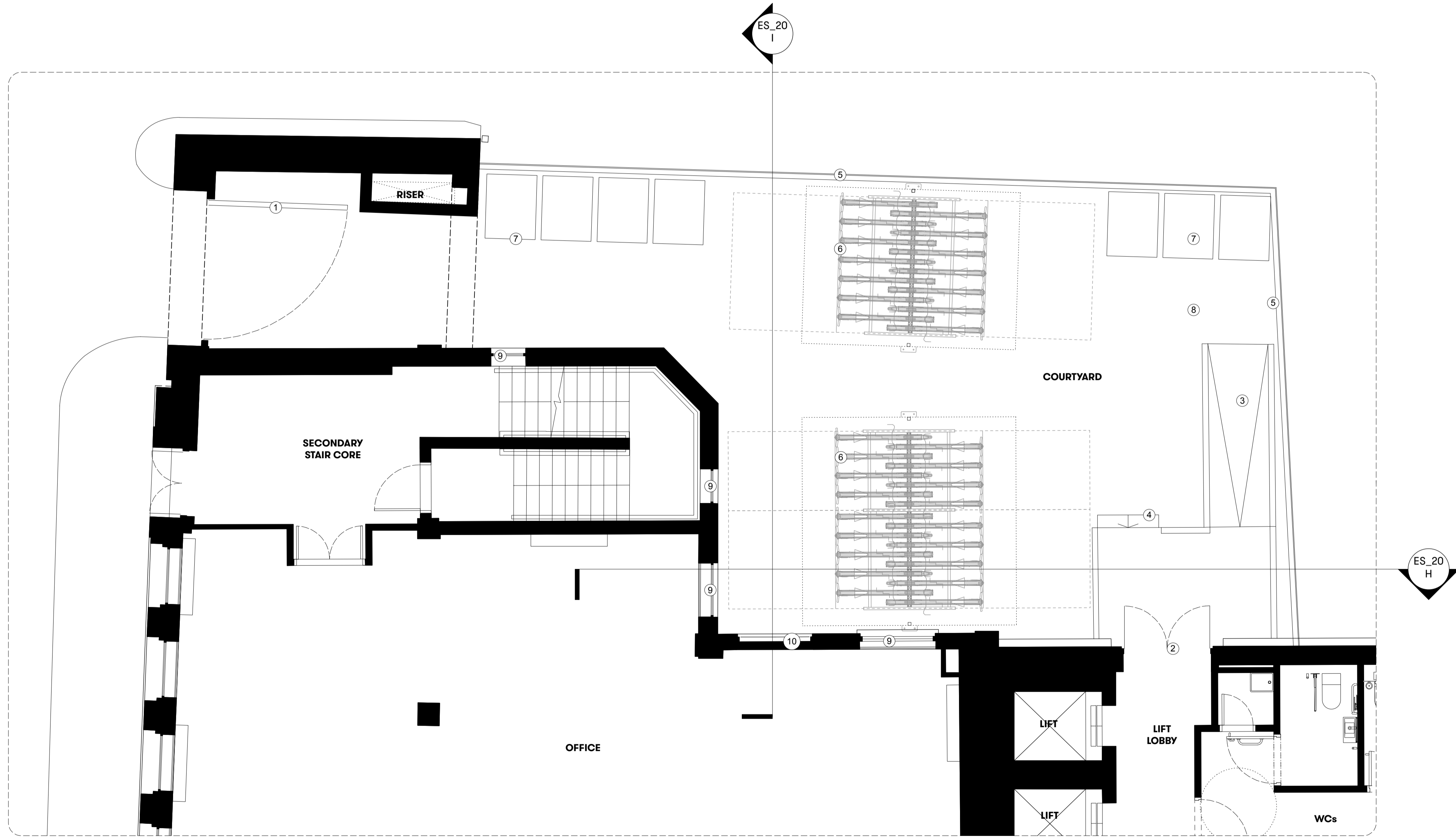
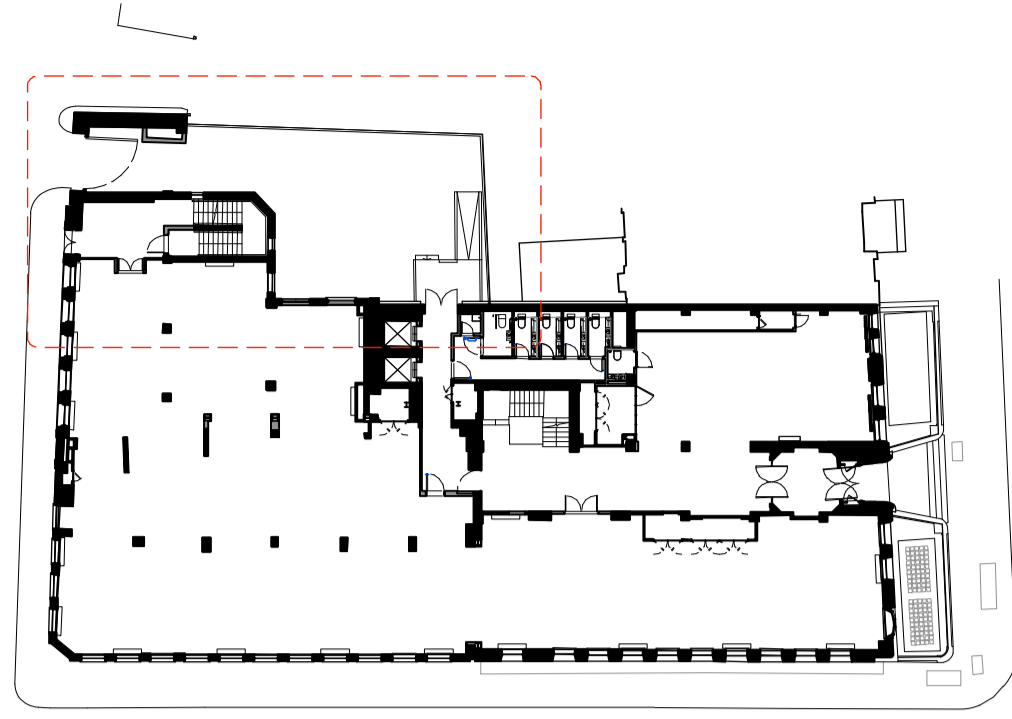
DRAWING STATUS  
PLANNING

**Summit  
House**





**KEY**



**GENERAL NOTES**

All dimensions to be checked on site prior to commencement of any works, and/or preparation of any shop drawings.

Sizes of and dimensions to any structural elements are indicative only. See structural engineers drawings for actual sizes / dimensions.

Sizes of and dimensions to any service elements are indicative only. See service engineers drawings for actual sizes and dimensions.

This drawing to be read in conjunction with all other Architect's drawings, specifications and other Consultants' information.

All proprietary systems shown on this drawing are to be installed strictly in accordance with the Manufacturers/Suppliers recommended details.

Any discrepancies between information shown on this drawing and any other contract information or manufacturers/suppliers recommendations is to be brought to the attention of the Architect

DO NOT SCALE FROM THIS DRAWING.

**NOTES**

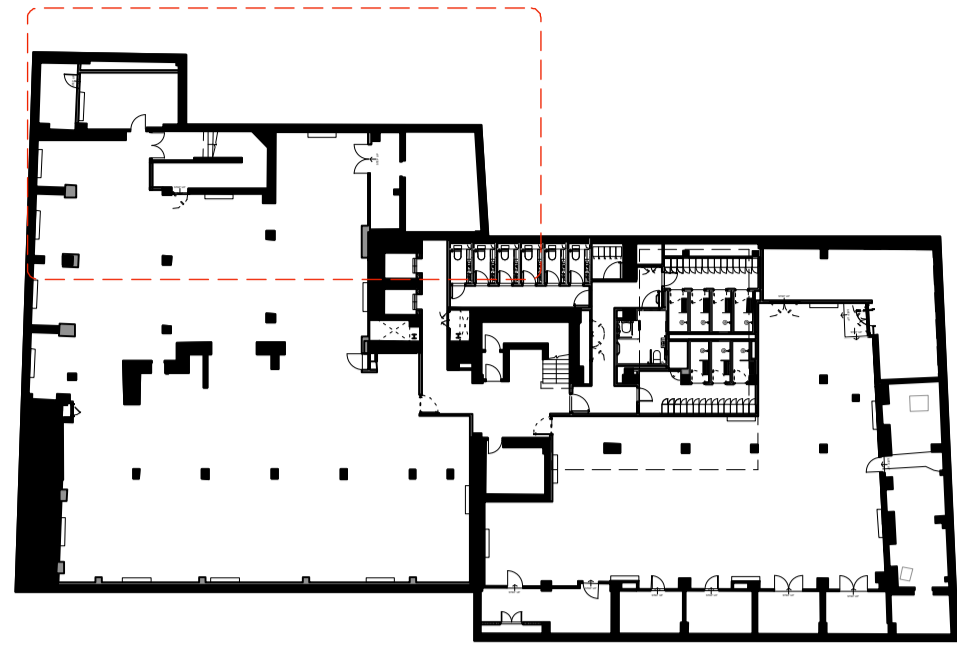
- ① Black painted metal entrance gate
- ② Black framed glass entrance door
- ③ Concrete ramp with black metal balustrade
- ④ Concrete stairs with black metal balustrade
- ⑤ Black painted metal fencing and anti-climb guard
- ⑥ Cycle storage with canopies
- ⑦ Refuse storage
- ⑧ Asphalt finish to courtyard
- ⑨ Black painted metal framed windows
- ⑩ Painted door, blocked up internally

P1	Planning Issue	12.11.18
REVISION		DATE
<b>Courtyard - Ground Floor</b>		
<b>EXISTING ARRANGMENT</b>		
SCALE	1:50 @ A1	(1:100 @ A3)
DWG No.	SUM_EX-20	REVISION P1
DATE	Oct. 2018	DRAWN BY VC
DRAWING STATUS	PLANNING	

**Summit House**



**KEY**



**GENERAL NOTES**

All dimensions to be checked on site prior to commencement of any works, and/or preparation of any shop drawings.

Sizes of and dimensions to any structural elements are indicative only. See structural engineers drawings for actual sizes / dimensions.

Sizes of and dimensions to any service elements are indicative only. See service engineers drawings for actual sizes and dimensions.

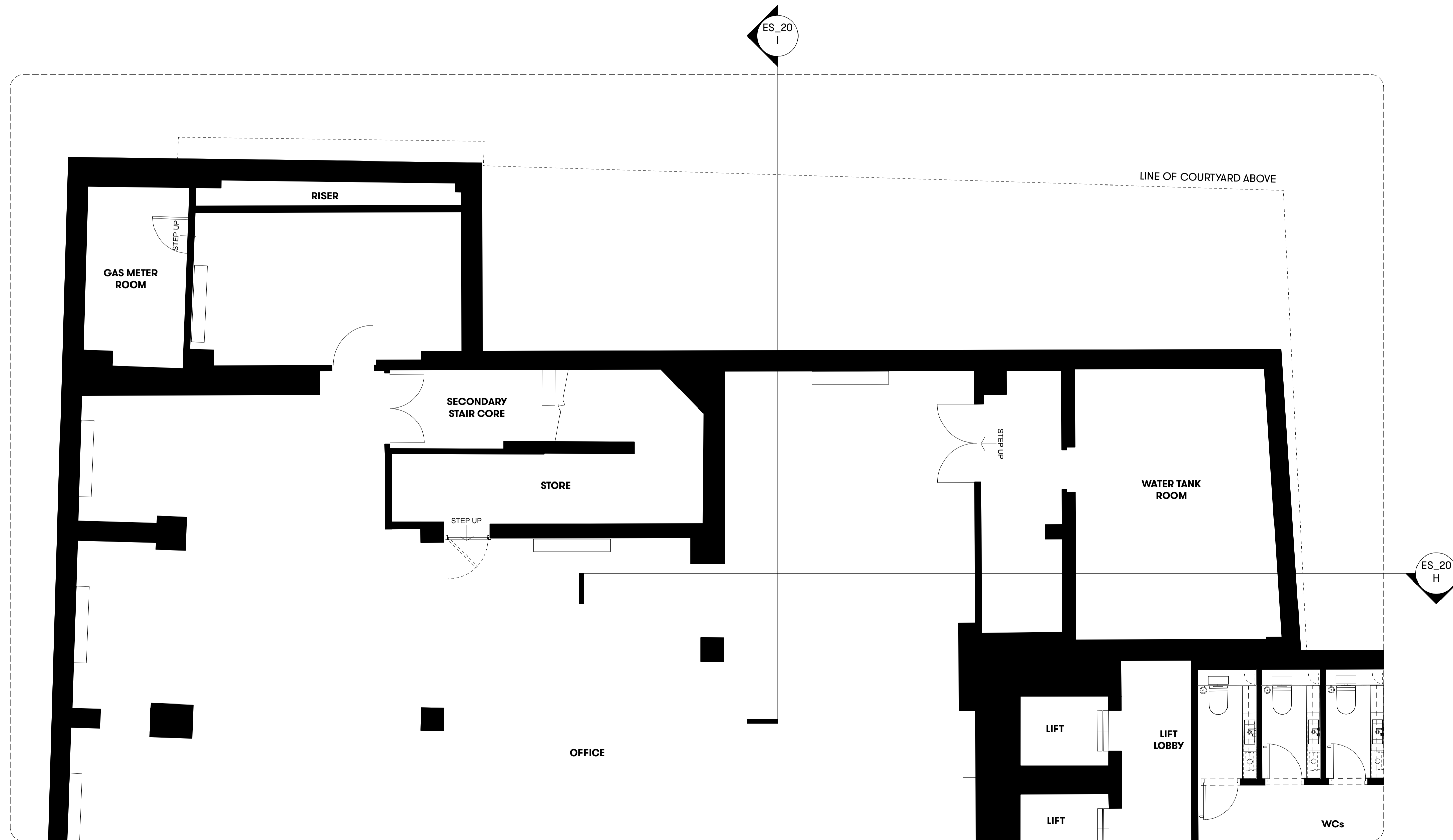
This drawing to be read in conjunction with all other Architect's drawings, specifications and other Consultants' information.

All proprietary systems shown on this drawing are to be installed strictly in accordance with the Manufacturers/Suppliers recommended details.

Any discrepancies between information shown on this drawing and any other contract information or manufacturers/suppliers recommendations is to be brought to the attention of the Architect

DO NOT SCALE FROM THIS DRAWING.

**NOTES**

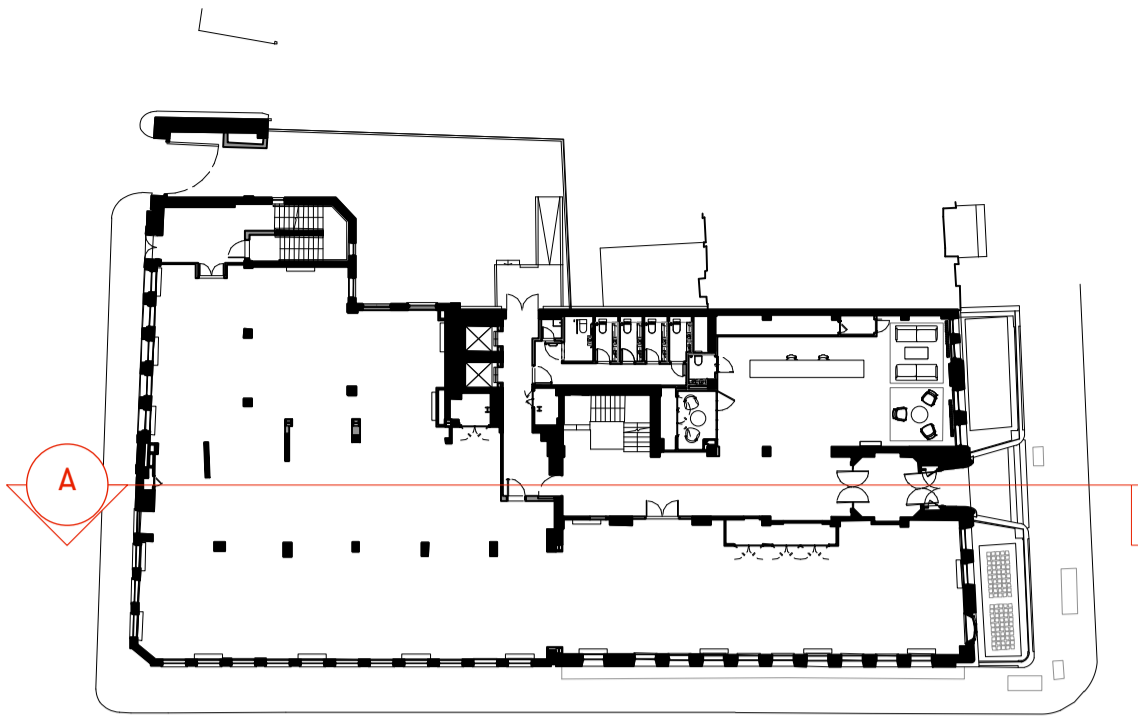


P1	Planning Issue	12.11.18
REVISION		DATE
<b>Courtyard - Lower Ground Floor</b>		
<b>EXISTING ARRANGMENT</b>		
SCALE	1:50 @ A1	(1:100 @ A3)
DWG No.	SUM_EX-21	REVISION P1
DATE	Oct. 2018	DRAWN BY VC
DRAWING STATUS	PLANNING	

**Summit House**



**KEY**



**GENERAL NOTES**

All dimensions to be checked on site prior to commencement of any works, and/or preparation of any shop drawings.

Sizes of and dimensions to any structural elements are indicative only. See structural engineers drawings for actual sizes / dimensions.

Sizes of and dimensions to any service elements are indicative only. See service engineers drawings for actual sizes and dimensions.

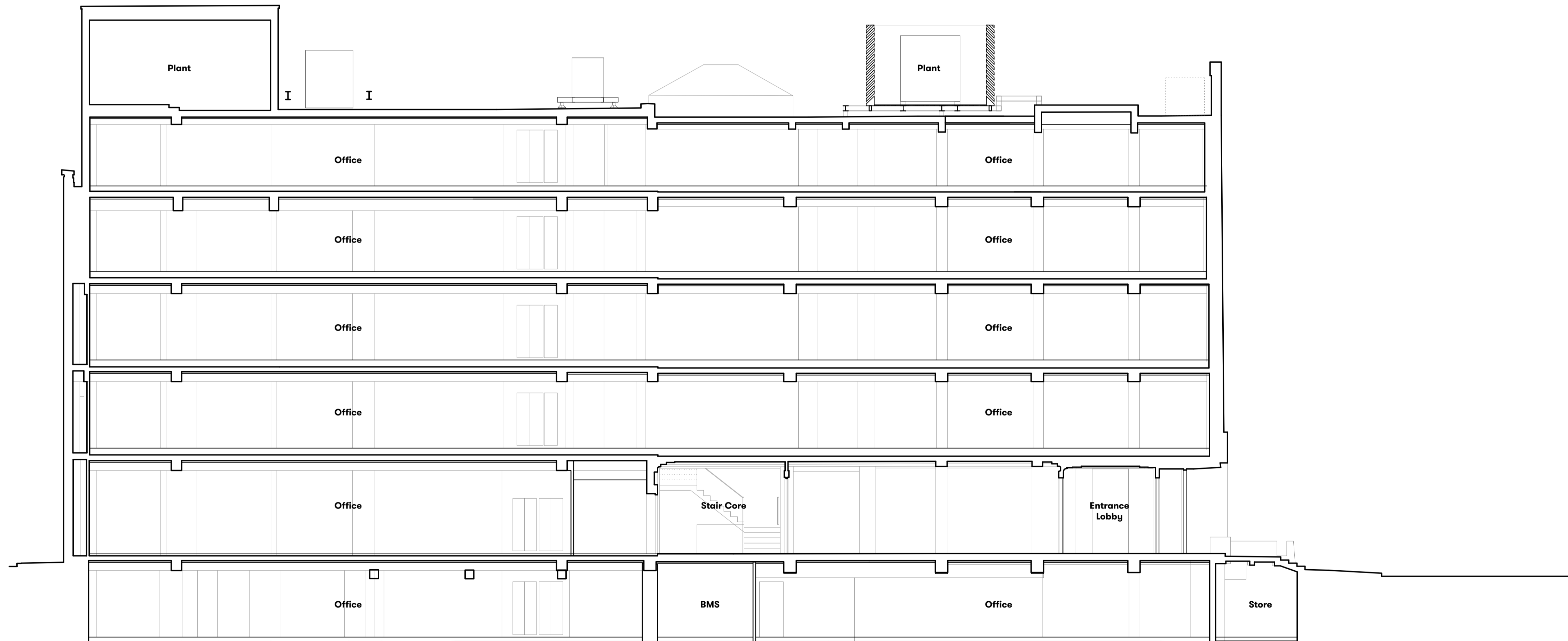
This drawing to be read in conjunction with all other Architect's drawings, specifications and other Consultants' information.

All proprietary systems shown on this drawing are to be installed strictly in accordance with the Manufacturers/Suppliers recommended details.

Any discrepancies between information shown on this drawing and any other contract information or manufacturers/suppliers recommendations is to be brought to the attention of the Architect

DO NOT SCALE FROM THIS DRAWING.

**NOTES**



EAGLE STREET

RED LION SQUARE

P1 Planning Issue 12.11.18

REVISION DATE

**Section A  
EXISTING SECTION**

SCALE 1:100 @ A1 (1:200 @ A3)

DWG No. SUM\_ES-01 REVISION P1

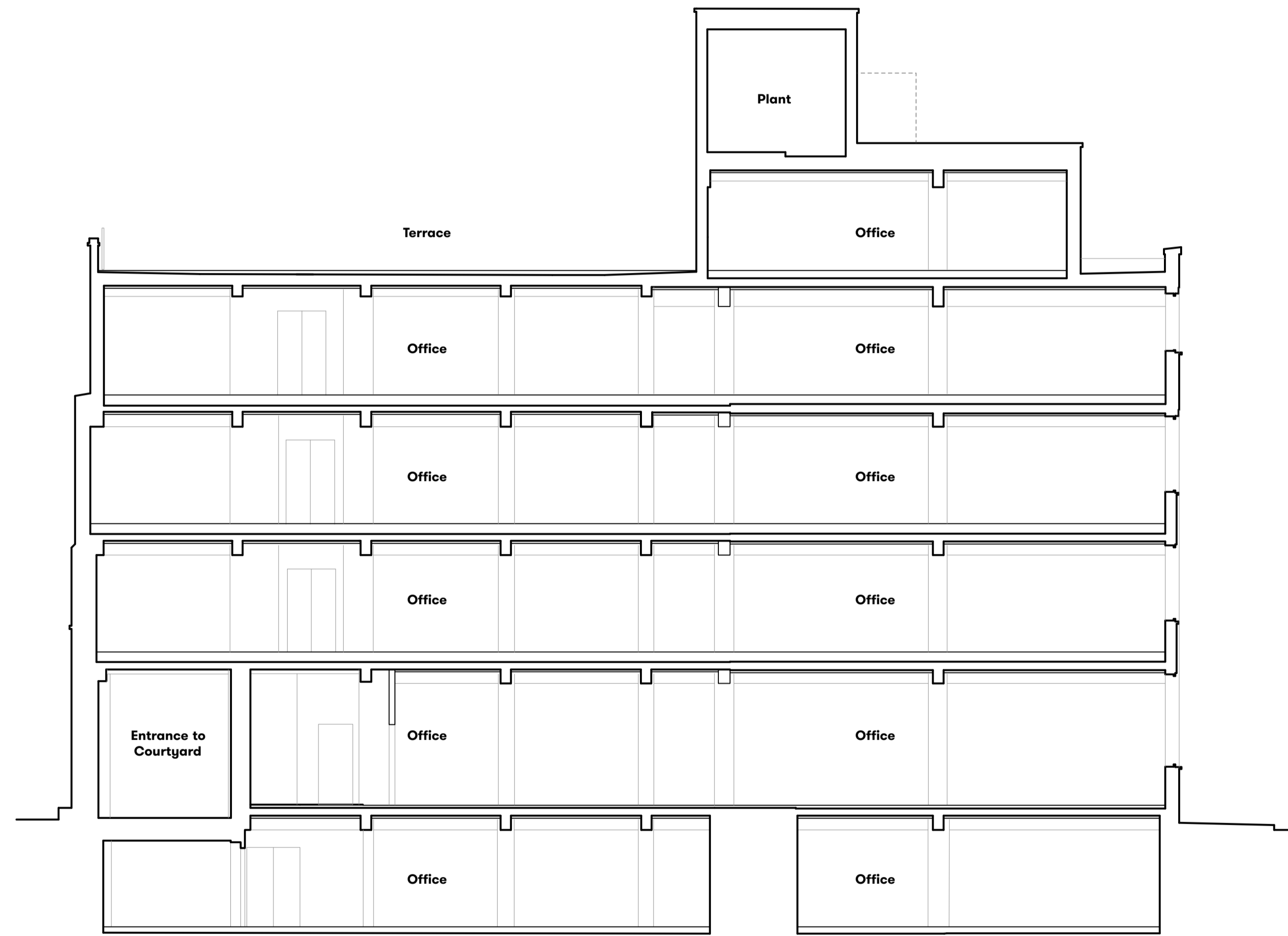
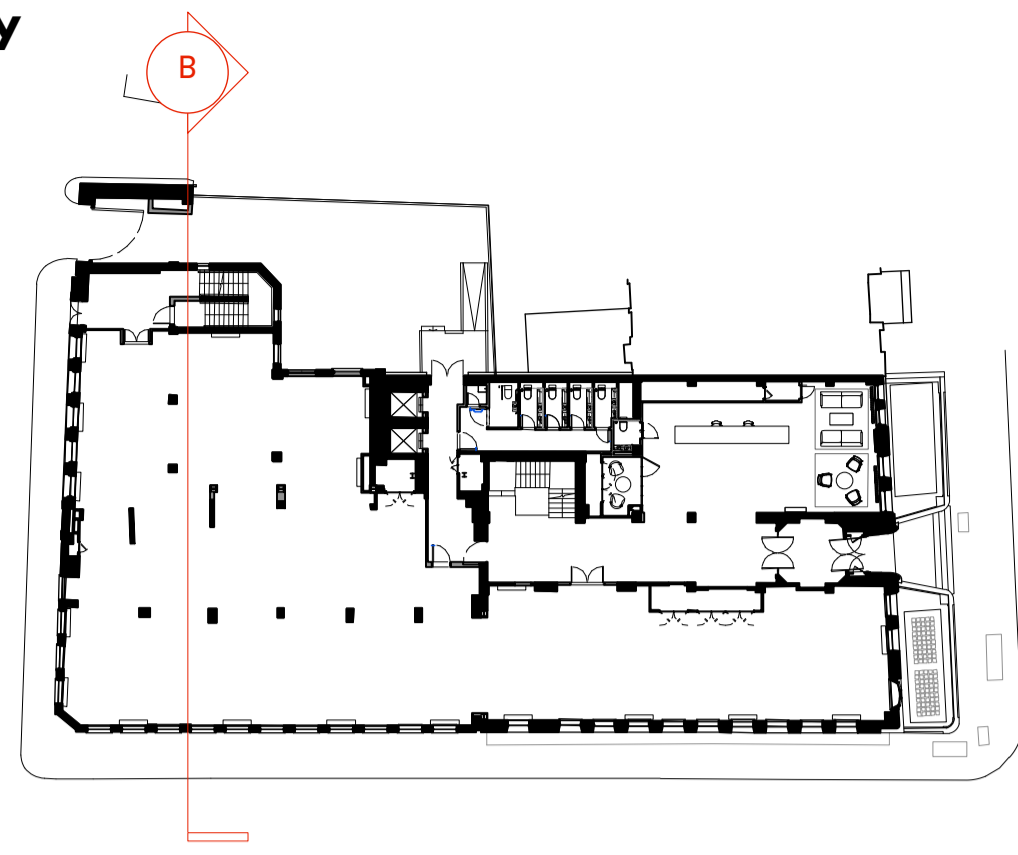
DATE Aug. 2018 DRAWN BY VC

DRAWING STATUS PLANNING

**Summit  
House**



KEY



YOKSHIRE  
GREY YARD

DANE STREET

**GENERAL NOTES**

All dimensions to be checked on site prior to commencement of any works, and/or preparation of any shop drawings.

Sizes of and dimensions to any structural elements are indicative only. See structural engineers drawings for actual sizes / dimensions.

Sizes of and dimensions to any service elements are indicative only. See service engineers drawings for actual sizes and dimensions.

This drawing to be read in conjunction with all other Architect's drawings, specifications and other Consultants' information.

All proprietary systems shown on this drawing are to be installed strictly in accordance with the Manufacturers/Suppliers recommended details.

Any discrepancies between information shown on this drawing and any other contract information or manufacturers/suppliers recommendations is to be brought to the attention of the Architect

DO NOT SCALE FROM THIS DRAWING.

**NOTES**

P1 Planning Issue 12.11.18

REVISION DATE

**Section B  
EXISTING SECTION**

SCALE 1:100 @ A1 (1:200 @ A3)

DWG No. SUM\_ES-02 REVISION P1

DATE Aug. 2018 DRAWN BY VC

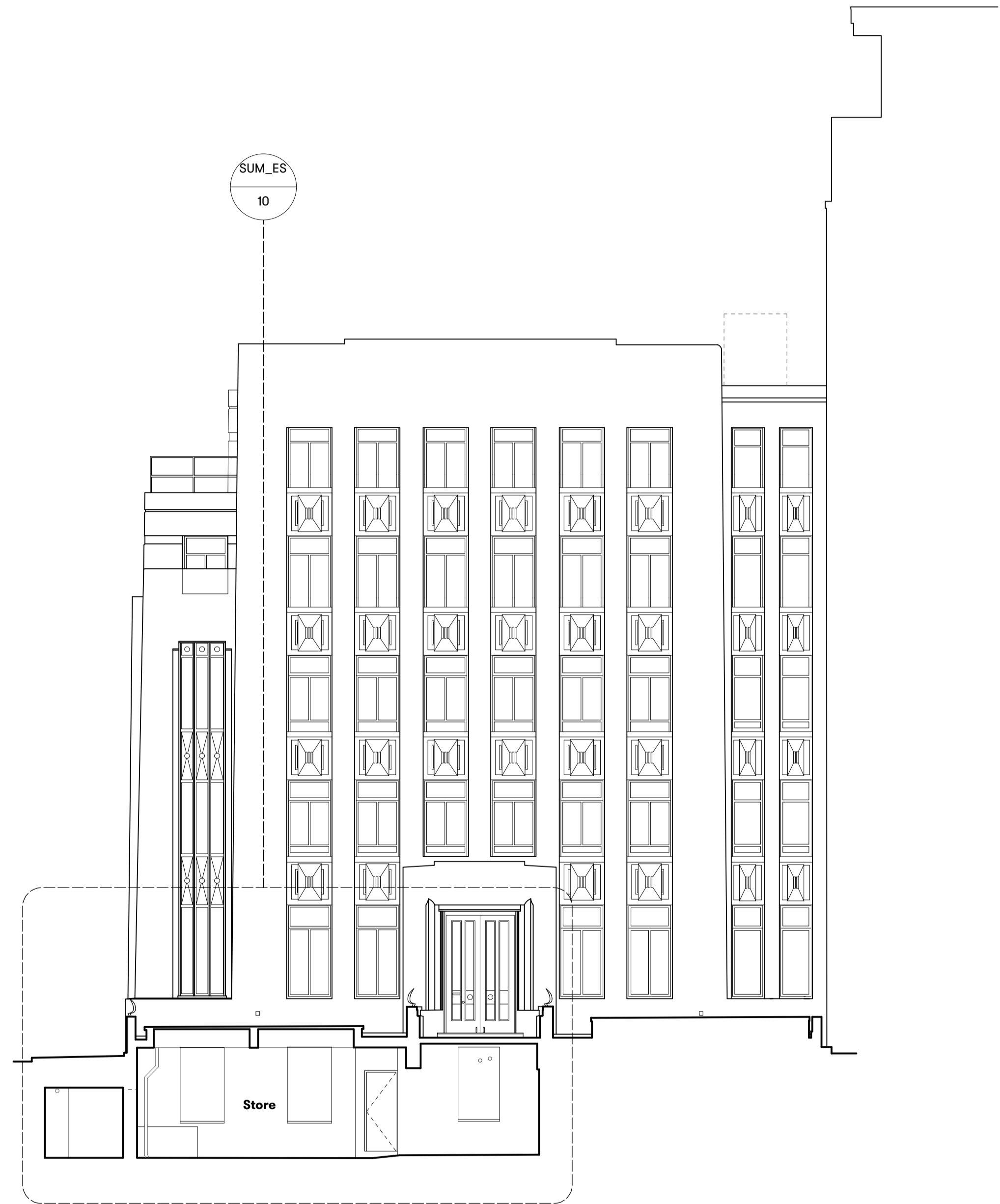
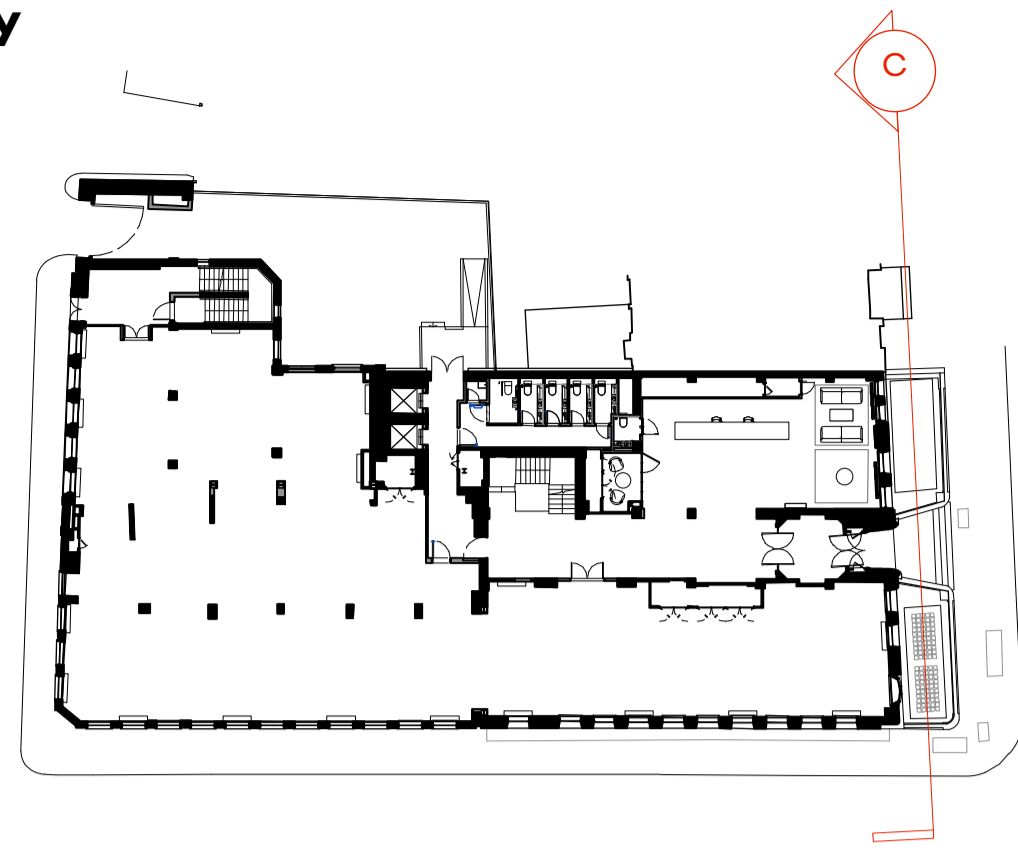
DRAWING STATUS PLANNING

**Summit  
House**





KEY



DANE STREET

11 RED LION SQUARE

GENERAL NOTES

All dimensions to be checked on site prior to commencement of any works, and/or preparation of any shop drawings.

Sizes of and dimensions to any structural elements are indicative only. See structural engineers drawings for actual sizes / dimensions.

Sizes of and dimensions to any service elements are indicative only. See service engineers drawings for actual sizes and dimensions.

This drawing to be read in conjunction with all other Architect's drawings, specifications and other Consultants' information.

All proprietary systems shown on this drawing are to be installed strictly in accordance with the Manufacturers/Suppliers recommended details.

Any discrepancies between information shown on this drawing and any other contract information or manufacturers/suppliers recommendations is to be brought to the attention of the Architect

DO NOT SCALE FROM THIS DRAWING.

NOTES

P1	Planning Issue	12.11.18
----	----------------	----------

REVISION	DATE
----------	------

**Section C**  
**EXISTING SECTION**

SCALE	1:100 @ A1	(1:200 @ A3)
-------	------------	--------------

DWG No.	SUM_ES-03	REVISION	P1
---------	-----------	----------	----

DATE	Aug. 2018	DRAWN BY	VC
------	-----------	----------	----

DRAWING STATUS	PLANNING
----------------	----------

**Summit**  
**House**

