



Summit House, Red Lion Square

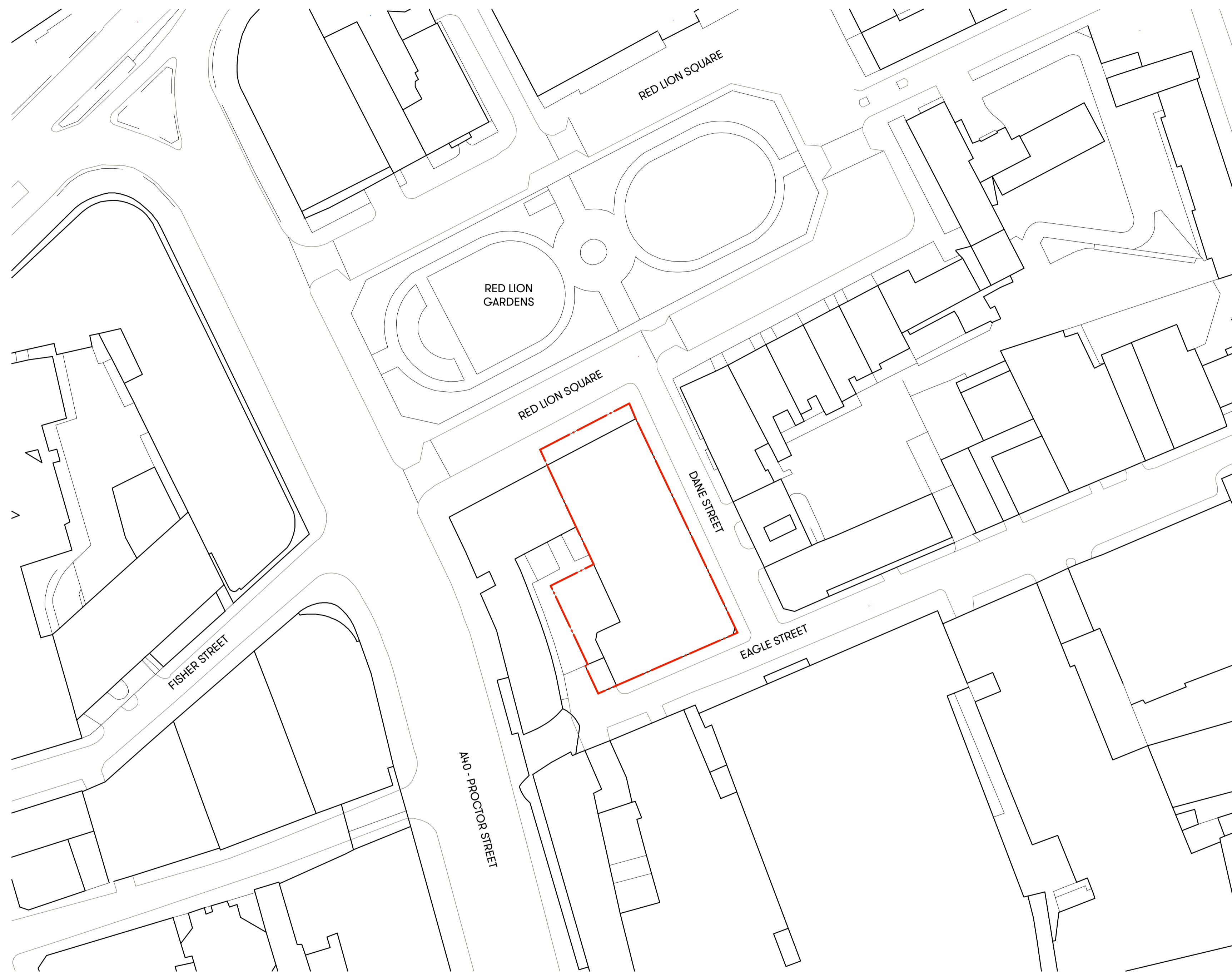
Planning Drawings

12th November 2018

TOG THE OFFICE GROUP		DRAWING ISSUE SHEET					
		Job Name			Job Ref: SUM		
		Summit House			Issue Date: xx October 2018		
Page		SUM_01		Title: Planning Drawing Register			
DWG No	DRAWING TITLE	SCALE	SIZE	REVISION			CADFILE
SUM_S	01	Site Location - Site Plan	1:500	A1	P1		
SUM_EX	00	Ground Floor - Existing Arrangement	1:100	A1	P1		
	01	First Floor - Existing Arrangement	1:100	A1	P1		
	02	Second Floor - Existing Arrangement	1:100	A1	P1		
	03	Third Floor - Existing Arrangement	1:100	A1	P1		
	04	Fourth Floor - Existing Arrangement	1:100	A1	P1		
	05	Roof - Existing Arrangement	1:100	A1	P1		
	B1	Lower Ground Floor - Existing Arrangement	1:100	A1	P1		
	10	Reception & Entrance Hall - Existing Arrangement	1:50	A1	P1		
	11	Reception & Entrance Hall - Existing Ceiling Plan	1:50	A1	P1		
	20	Courtyard Ground Floor - Existing Arrangement	1:50	A1	P1		
	21	Courtyard Lower Ground - Existing Arrangement	1:50	A1	P1		
SUM_ES	01	Section A - Existing Section	1:100	A1	P1		
	02	Section B - Existing Section	1:100	A1	P1		
	03	Section C - Existing Section	1:100	A1	P1		
	10	Front Lightwell Sections D and E - Existing	1:50	A1	P1		
	15	Stairwell Sections F and G - Existing	1:50	A1	P1		
	20	Courtyard Sections H and I - Existing	1:50	A1	P1		
	21	Courtyard Sections J and K - Existing	1:50	A1	P1		
SUM_EE	01	North Elevation - Existing Elevation	1:100	A1	P1		
	02	East Elevation - Existing Elevation	1:100	A1	P1		
	03	South Elevation - Existing Elevation	1:100	A1	P1		
	04	West Elevation - Existing Elevation	1:100	A1	P1		
	10	Reception & Entrance Hall - Existing Elevations A & B	1:50	A1	P1		
	11	Reception & Entrance Hall - Existing Elevation C	1:25	A1	P1		
	12	Reception & Entrance Hall - Existing Elevation D	1:25	A1	P1		
	13	Reception & Entrance Hall - Existing Elevation E	1:25	A1	P1		
	14	Reception & Entrance Hall - Existing Elevation F	1:25	A1	P1		
SUM_DE	00	Ground Floor - Demolition Plan	1:100	A1	P1		
	01	First Floor - Demolition Plan	1:100	A1	P1		
	02	Second Floor - Demolition Plan	1:100	A1	P1		
	03	Third Floor - Demolition Plan	1:100	A1	P1		
	04	Fourth Floor - Demolition Plan	1:100	A1	P1		
	05	Roof - Demolition Plan	1:100	A1	P1		
	B1	Lower Ground Floor - Demolition Plan	1:100	A1	P1		
DATE OF THIS ISSUE (last column)		Day	12				
		Month	11				
		Year	18				
Client	The Office Group						1
Building Control	Shore Engineering						1
Structural Engineer	HTS						1
Mechanical / Electrical Engineer	EEP						1
Quantity Surveyor	Castle Hayes Pursey LLP						1
Planning Consultant	Dp9						1
Contractor	Faithdean						1
Heritage Consultant	Turley Heritage						1
Architect	Note Design Studio						1
	SMOK						1
	FILE						1
Purpose of Issue	(See below for legend)						P
Method of Issue	(See below for legend)						E
Issued by							VC
Paper: P Email: E Compact Disk: CD Negative: N DWG format: dwg							
Planning: P Information: I Comment: M Approval: A Bills of Quantity: B Tender: T Construction: C							

TOG THE OFFICE GROUP		DRAWING ISSUE SHEET					
		Job Name			Job Ref: SUM		
		Summit House			Issue Date: xx October 2018		
Page		SUM_02		Title: Planning Drawing Register			
DWG No	DRAWING TITLE	SCALE	SIZE	REVISION			CADFILE
SUM_PL	00	Ground Floor - General Arrangement	1:100	A1	P1		
	01	First Floor - General Arrangement	1:100	A1	P1		
	02	Second Floor - General Arrangement	1:100	A1	P1		
	03	Third Floor - General Arrangement	1:100	A1	P1		
	04	Fourth Floor - General Arrangement	1:100	A1	P1		
	05	Roof - General Arrangement	1:100	A1	P1		
	B1	Lower Ground Floor - General Arrangement	1:100	A1	P1		
	10	Reception & Entrance Hall - Proposed Arrangement	1:50	A1	P1		
	11	Reception & Entrance Hall - Proposed Ceiling Plan	1:50	A1	P1		
	15	Stairwell - Proposed Arrangement	1:50	A1	P1		
	20	Courtyard Ground Floor - Proposed Arrangement	1:50	A1	P1		
	21	Courtyard Lower Ground - Proposed Arrangement	1:50	A1	P1		
SUM_PL	101	Section A - General Section	1:100	A1	P1		
	102	Section B - General Section	1:100	A1	P1		
	103	Section C - General Section	1:100	A1	P1		
	110	Front Lightwell Sections D and E - Proposed	1:50	A1	P1		
	115	Stairwell Sections F and G - Proposed	1:50	A1	P1		
	120	Courtyard Sections H and I - Proposed	1:50	A1	P1		
	121	Courtyard Sections J and K - Proposed	1:50	A1	P1		
SUM_PL	201	North Elevation - General Elevation	1:100	A1	P1		
	202	East Elevation - General Elevation	1:100	A1	P1		
	203	South Elevation - General Elevation	1:100	A1	P1		
	204	West Elevation - General Elevation	1:100	A1	P1		
	210	Reception & Entrance Hall - Proposed Elevations A & B	1:50	A1	P1		
	211	Reception & Entrance Hall - Proposed Elevation C	1:25	A1	P1		
	212	Reception & Entrance Hall - Proposed Elevation D	1:25	A1	P1		
	213	Reception & Entrance Hall - Proposed Elevation E	1:25	A1	P1		
	214	Reception & Entrance Hall - Proposed Elevation F	1:25	A1	P1		
SUM_PL	301	Typical Window Details - Proposed	1:10	A1	P1		
DATE OF THIS ISSUE (last column)		Day	12				
		Month	11				
		Year	18				
Client	The Office Group						1
Building Control	Shore Engineering						1
Structural Engineer	HTS						1
Mechanical / Electrical Engineer	EEP						1
Quantity Surveyor	Castle Hayes Pursey LLP						1
Planning Consultant	Dp9						1
Contractor	Faithdean						1
Heritage Consultant	Turley Heritage						1
Architect	Note Design Studio						1
	SMOK						1
	FILE						1
Purpose of Issue	(See below for legend)						P
Method of Issue	(See below for legend)						E
Issued by							VC
Paper: P Email: E Compact Disk: CD Negative: N DWG format: dwg							
Planning: P Information: I Comment: M Approval: A Bills of Quantity: B Tender: T Construction: C							





1 Site Location Plan
Scale 1: 500 at A1

GENERAL NOTES

All dimensions to be checked on site prior to commencement of any works, and/or preparation of any shop drawings.

Sizes of and dimensions to any structural elements are indicative only. See structural engineers drawings for actual sizes / dimensions.

Sizes of and dimensions to any service elements are indicative only. See service engineers drawings for actual sizes and dimensions.

This drawing to be read in conjunction with all other Architect's drawings, specifications and other Consultants' information.

All proprietary systems shown on this drawing are to be installed strictly in accordance with the Manufacturers/Suppliers recommended details.

Any discrepancies between information shown on this drawing and any other contract information or manufacturers/suppliers recommendations is to be brought to the attention of the Architect

DO NOT SCALE FROM THIS DRAWING.

NOTES

P1 Planning Issue 12.11.18

REVISION DATE

**Site Location
SITE PLAN**

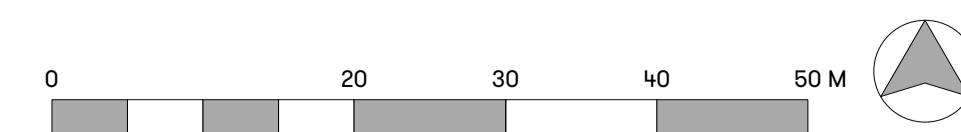
SCALE 1:500 @ A1 (1:1000 @ A3)

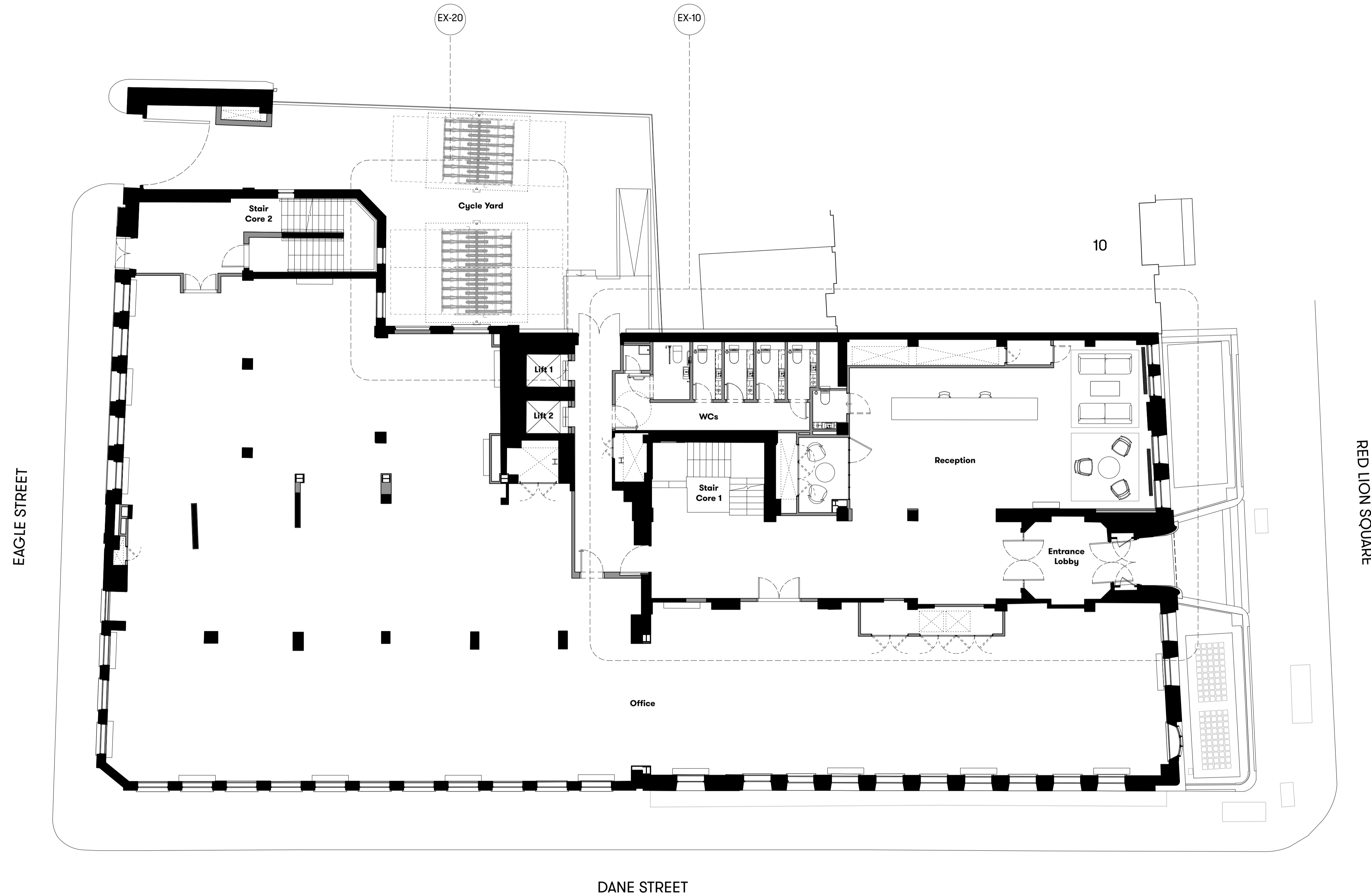
DWG No. SUM_S-01 REVISION P1

DATE Aug. 2018 DRAWN BY VC

DRAWING STATUS PLANNING

**Summit
House**





GENERAL NOTES

All dimensions to be checked on site prior to commencement of any works, and/or preparation of any shop drawings.

Sizes of and dimensions to any structural elements are indicative only. See structural engineers drawings for actual sizes / dimensions.

Sizes of and dimensions to any service elements are indicative only. See service engineers drawings for actual sizes and dimensions.

This drawing to be read in conjunction with all other Architect's drawings, specifications and other Consultants' information.

All proprietary systems shown on this drawing are to be installed strictly in accordance with the Manufacturers/Suppliers recommended details.

Any discrepancies between information shown on this drawing and any other contract information or manufacturers/suppliers recommendations is to be brought to the attention of the Architect

DO NOT SCALE FROM THIS DRAWING.

NOTES

P1 Planning Issue 12.11.18

REVISION DATE

**Ground Floor
EXISTING ARRANGEMENT**

SCALE 1:100 @ A1 (1:200 @ A3)

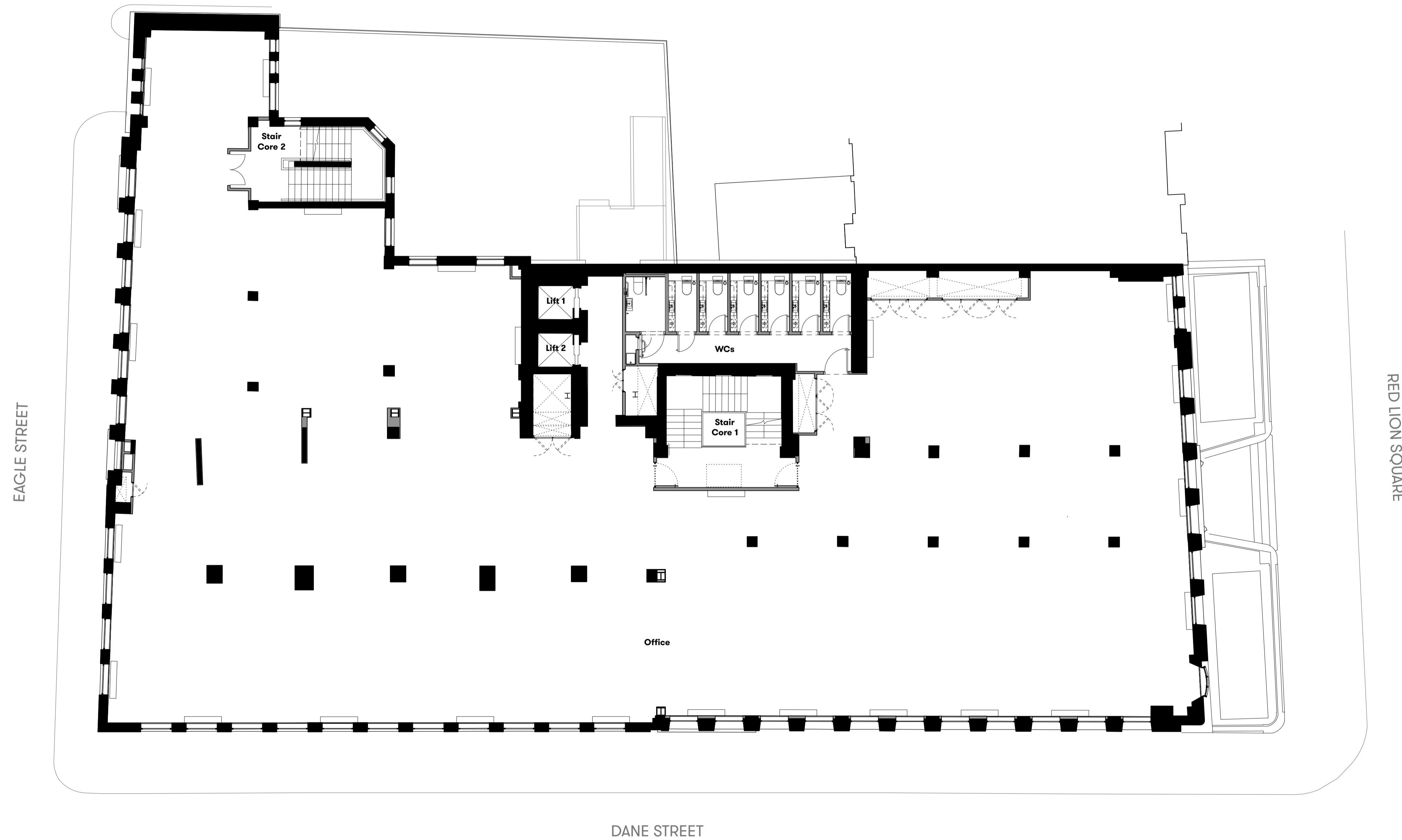
DWG No. SUM_EX-00 REVISION P1

DATE Jul. 2018 DRAWN BY VC

DRAWING STATUS PLANNING

**Summit
House**





GENERAL NOTES

All dimensions to be checked on site prior to commencement of any works, and/or preparation of any shop drawings.

Sizes of and dimensions to any structural elements are indicative only. See structural engineers drawings for actual sizes / dimensions.

Sizes of and dimensions to any service elements are indicative only. See service engineers drawings for actual sizes and dimensions.

This drawing to be read in conjunction with all other Architect's drawings, specifications and other Consultants' information.

All proprietary systems shown on this drawing are to be installed strictly in accordance with the Manufacturers/Suppliers recommended details.

Any discrepancies between information shown on this drawing and any other contract information or manufacturers/suppliers recommendations is to be brought to the attention of the Architect

DO NOT SCALE FROM THIS DRAWING.

NOTES

P1 Planning Issue 12.11.18

REVISION DATE

**First Floor
EXISTING ARRANGEMENT**

SCALE 1:100 @ A1 (1:200 @ A3)

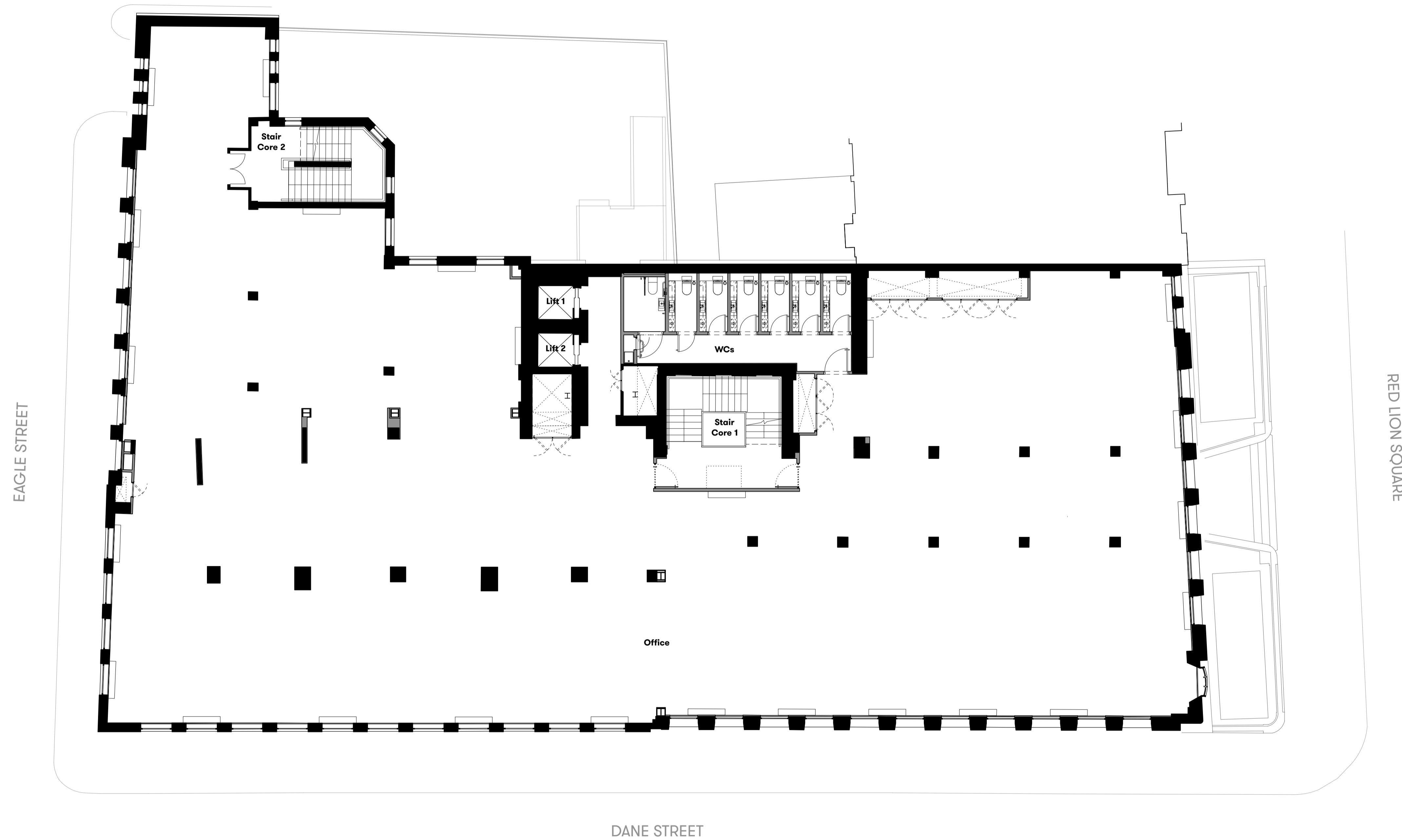
DWG No. SUM_EX-01 REVISION P1

DATE Jul. 2018 DRAWN BY VC

DRAWING STATUS PLANNING

**Summit
House**





GENERAL NOTES

All dimensions to be checked on site prior to commencement of any works, and/or preparation of any shop drawings.

Sizes of and dimensions to any structural elements are indicative only. See structural engineers drawings for actual sizes / dimensions.

Sizes of and dimensions to any service elements are indicative only. See service engineers drawings for actual sizes and dimensions.

This drawing to be read in conjunction with all other Architect's drawings, specifications and other Consultants' information.

All proprietary systems shown on this drawing are to be installed strictly in accordance with the Manufacturers/Suppliers recommended details.

Any discrepancies between information shown on this drawing and any other contract information or manufacturers/suppliers recommendations is to be brought to the attention of the Architect

DO NOT SCALE FROM THIS DRAWING.

NOTES

P1 Planning Issue 12.11.18

REVISION DATE

**Second Floor
EXISTING ARRANGEMENT**

SCALE 1:100 @ A1 (1:200 @ A3)

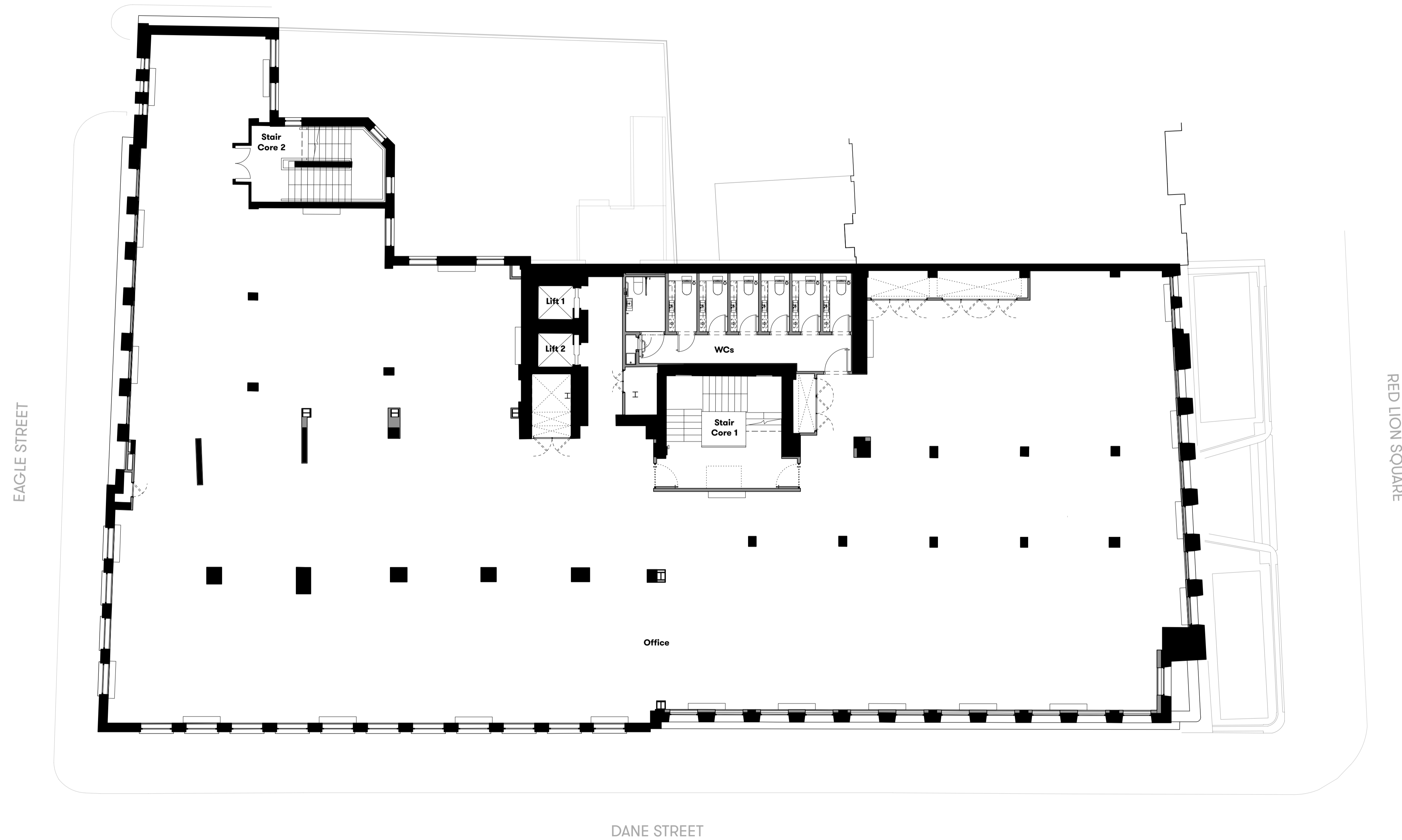
DWG No. SUM_EX-02 REVISION P1

DATE Jul. 2018 DRAWN BY VC

DRAWING STATUS PLANNING

**Summit
House**





GENERAL NOTES

All dimensions to be checked on site prior to commencement of any works, and/or preparation of any shop drawings.

Sizes of and dimensions to any structural elements are indicative only. See structural engineers drawings for actual sizes / dimensions.

Sizes of and dimensions to any service elements are indicative only. See service engineers drawings for actual sizes and dimensions.

This drawing to be read in conjunction with all other Architect's drawings, specifications and other Consultants' information.

All proprietary systems shown on this drawing are to be installed strictly in accordance with the Manufacturers/Suppliers recommended details.

Any discrepancies between information shown on this drawing and any other contract information or manufacturers/suppliers recommendations is to be brought to the attention of the Architect

DO NOT SCALE FROM THIS DRAWING.

NOTES

P1 Planning Issue 12.11.18

REVISION DATE

**Third Floor
EXISTING ARRANGEMENT**

SCALE 1:100 @ A1 (1:200 @ A3)

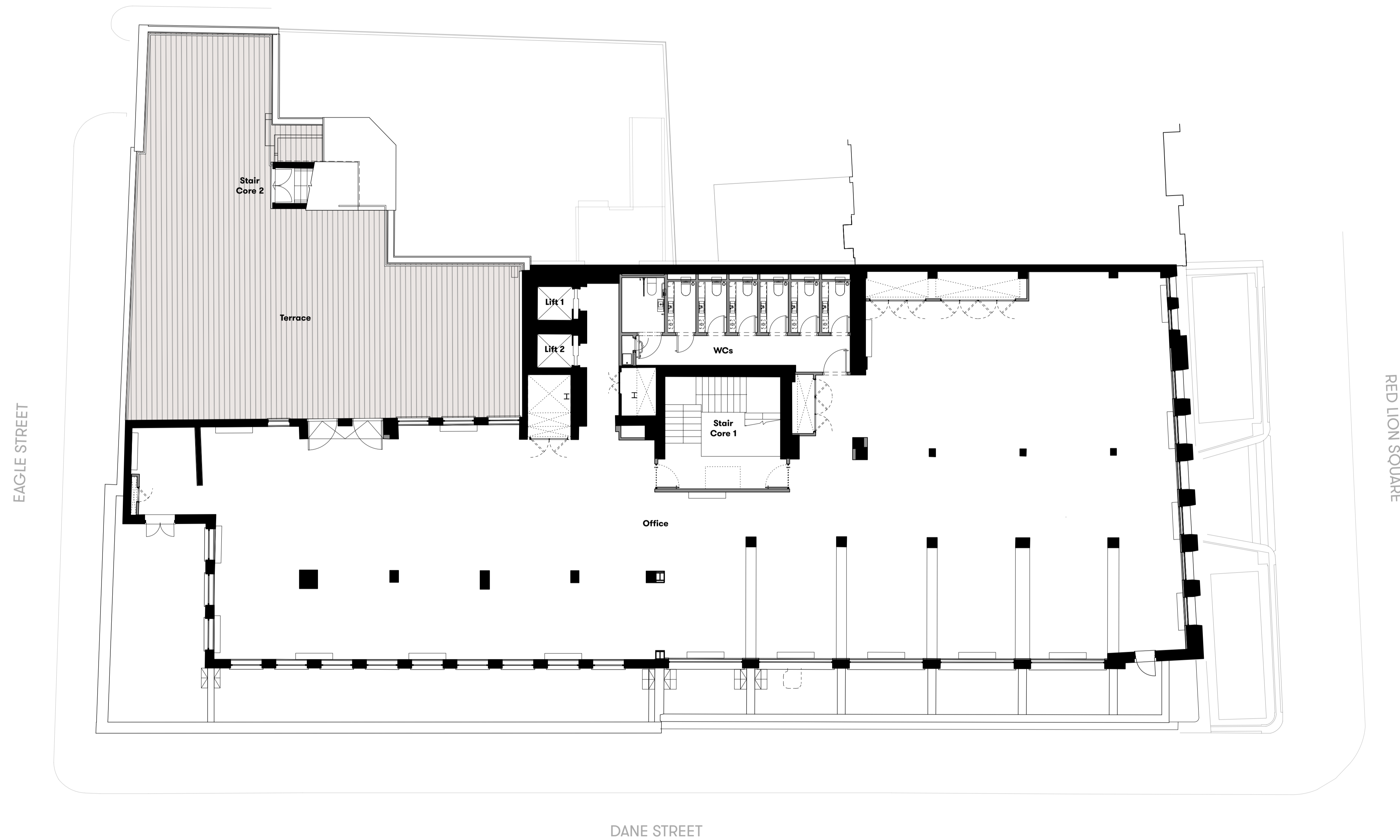
DWG No. SUM_EX-03 REVISION P1

DATE Jul. 2018 DRAWN BY VC

DRAWING STATUS PLANNING

**Summit
House**





GENERAL NOTES

All dimensions to be checked on site prior to commencement of any works, and/or preparation of any shop drawings.

Sizes of and dimensions to any structural elements are indicative only. See structural engineers drawings for actual sizes / dimensions.

Sizes of and dimensions to any service elements are indicative only. See service engineers drawings for actual sizes and dimensions.

This drawing to be read in conjunction with all other Architect's drawings, specifications and other Consultants' information.

All proprietary systems shown on this drawing are to be installed strictly in accordance with the Manufacturers/Suppliers recommended details.

Any discrepancies between information shown on this drawing and any other contract information or manufacturers/suppliers recommendations is to be brought to the attention of the Architect

DO NOT SCALE FROM THIS DRAWING.

NOTES

P1 Planning Issue 12.11.18

REVISION DATE

**Fourth Floor
EXISTING ARRANGEMENT**

SCALE 1:100 @ A1 (1:200 @ A3)

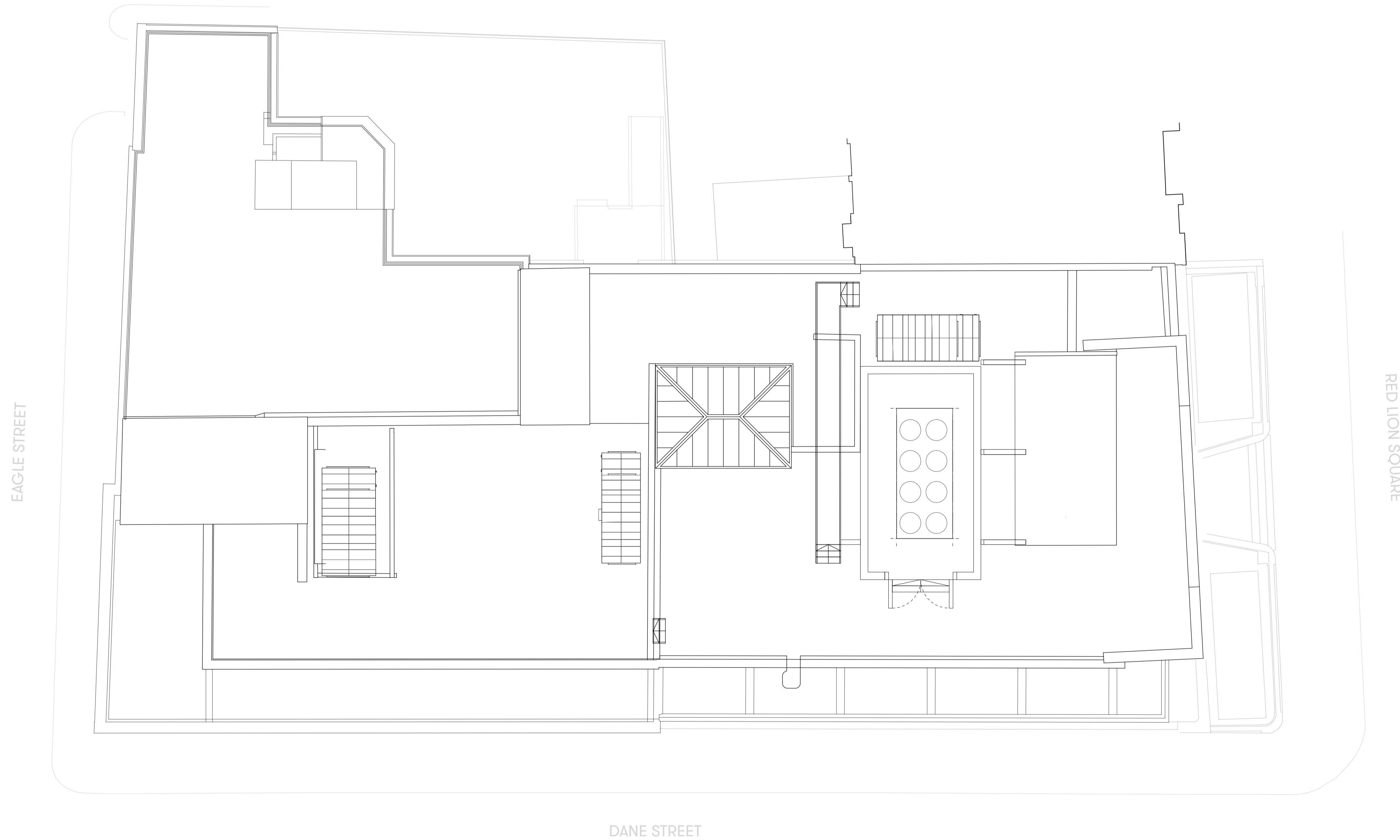
DWG No. SUM_EX-04 REVISION P1

DATE Jul. 2018 DRAWN BY VC

DRAWING STATUS PLANNING

**Summit
House**





GENERAL NOTES

All dimensions to be checked on site prior to commencement of any works, and/or preparation of any shop drawings.

Sizes of and dimensions to any structural elements are indicative only. See structural engineers drawings for actual sizes / dimensions.

Sizes of and dimensions to any service elements are indicative only. See service engineers drawings for actual sizes and dimensions.

This drawing to be read in conjunction with all other Architect's drawings, specifications and other Consultants' information.

All proprietary systems shown on this drawing are to be installed strictly in accordance with the Manufacturers/Suppliers recommended details.

Any discrepancies between information shown on this drawing and any other contract information or manufacturers/suppliers recommendations is to be brought to the attention of the Architect

DO NOT SCALE FROM THIS DRAWING.

NOTES

P1 Planning Issue 12.11.18

REVISION DATE

Roof Level

EXISTING ARRANGEMENT

SCALE 1:100 @ A1 (1:200 @ A3)

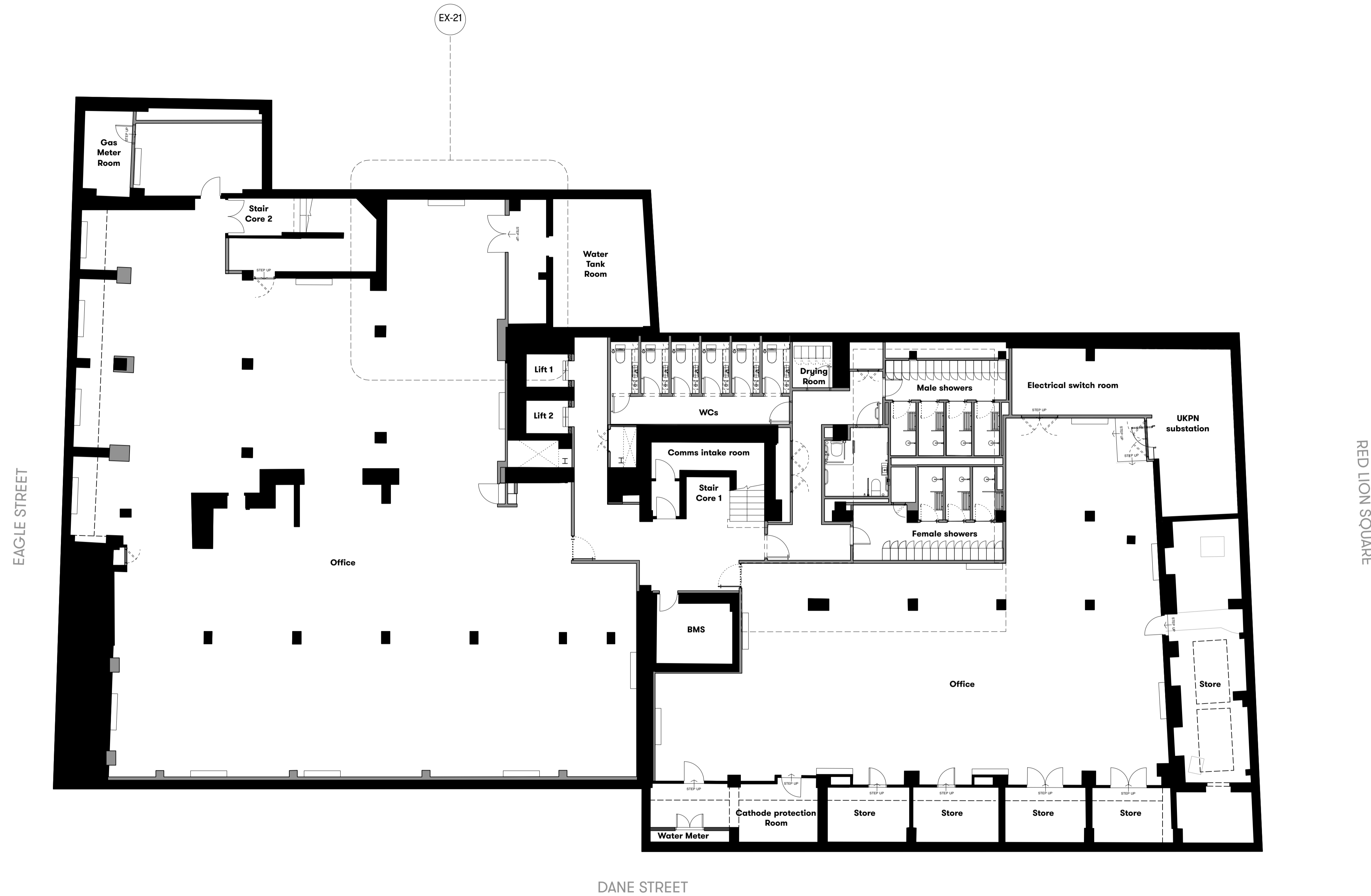
DWG No. SUM_EX-05 REVISION P1

DATE Jul. 2018 DRAWN BY VC

DRAWING STATUS PLANNING

Summit House





GENERAL NOTES

All dimensions to be checked on site prior to commencement of any works, and/or preparation of any shop drawings.

Sizes of and dimensions to any structural elements are indicative only. See structural engineers drawings for actual sizes / dimensions.

Sizes of and dimensions to any service elements are indicative only. See service engineers drawings for actual sizes and dimensions.

This drawing to be read in conjunction with all other Architect's drawings, specifications and other Consultants' information.

All proprietary systems shown on this drawing are to be installed strictly in accordance with the Manufacturers/Suppliers recommended details.

Any discrepancies between information shown on this drawing and any other contract information or manufacturers/suppliers recommendations is to be brought to the attention of the Architect

DO NOT SCALE FROM THIS DRAWING.

NOTES

P1 Planning Issue 12.11.18

REVISION DATE

**Lower Ground Floor
EXISTING ARRANGEMENT**

SCALE 1:100 @ A1 (1:200 @ A3)

DWG No. SUM_EX-B1 REVISION P1

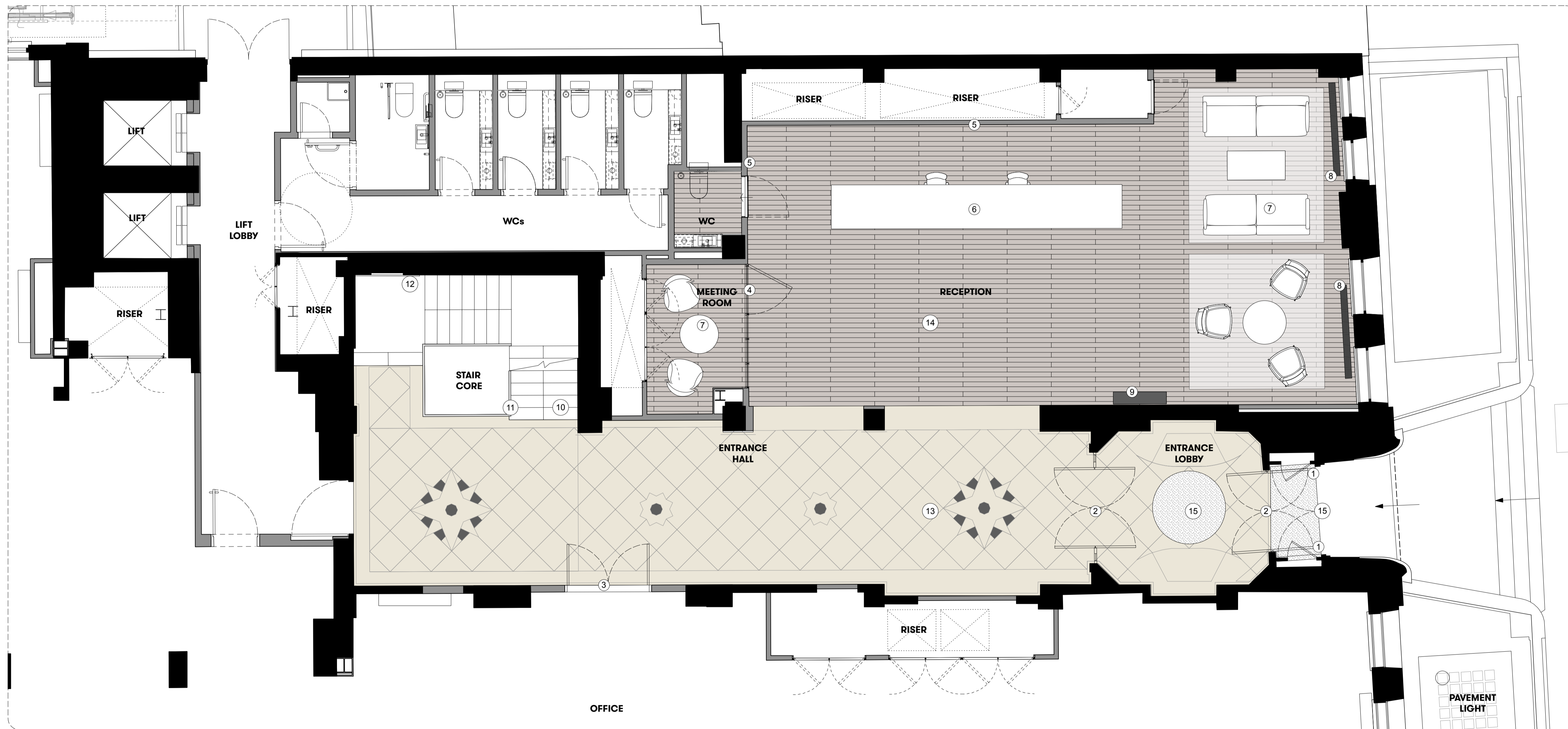
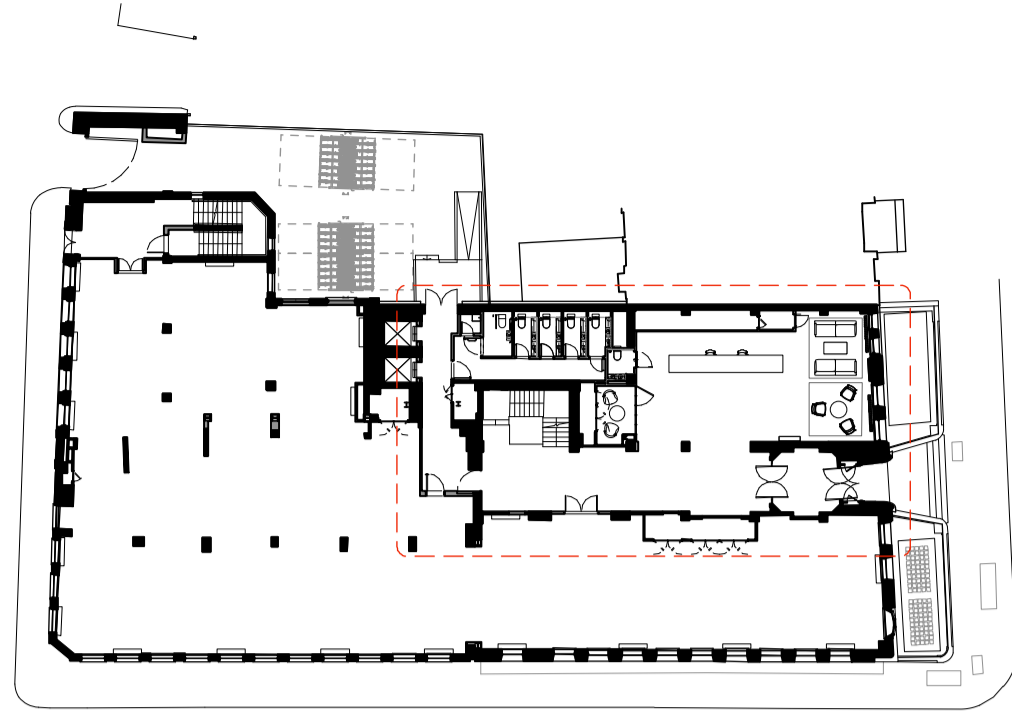
DATE Jul. 2018 DRAWN BY VC

DRAWING STATUS PLANNING

**Summit
House**



KEY



GENERAL NOTES

All dimensions to be checked on site prior to commencement of any works, and/or preparation of any shop drawings.

Sizes of and dimensions to any structural elements are indicative only. See structural engineers drawings for actual sizes / dimensions.

Sizes of and dimensions to any service elements are indicative only. See service engineers drawings for actual sizes and dimensions.

This drawing to be read in conjunction with all other Architect's drawings, specifications and other Consultants' information.

All proprietary systems shown on this drawing are to be installed strictly in accordance with the Manufacturers/Suppliers recommended details.

Any discrepancies between information shown on this drawing and any other contract information or manufacturers/suppliers recommendations is to be brought to the attention of the Architect

DO NOT SCALE FROM THIS DRAWING.

NOTES

- ① Original timber carved entrance doors
- ② Black framed glass entrance doors
- ③ Timber veneered door to office space
- ④ Black metal framed glazed screen
- ⑤ Black timber wall panelling
- ⑥ Brass and Black metal reception desk
- ⑦ Loose furniture and rugs
- ⑧ Black metal floor mounted radiator
- ⑨ Black metal encased floor mounted FCU
- ⑩ Stone clad stairs
- ⑪ Black metal balustrade with brushed stainless steel handrail
- ⑫ Original single glazed black metal framed windows with white coloured secondary glazing
- ⑬ Original stone tiled flooring
- ⑭ Timber parquet flooring
- ⑮ Entrance matting

P1 Planning Issue 12.11.18

REVISION DATE

**Entrance Hall & Reception
EXISTING ARRANGEMENT**

SCALE 1:50 @ A1 (1:100 @ A3)

DWG No. SUM_EX-10 REVISION P1

DATE Oct. 2018 DRAWN BY VC

DRAWING STATUS
PLANNING

**Summit
House**

