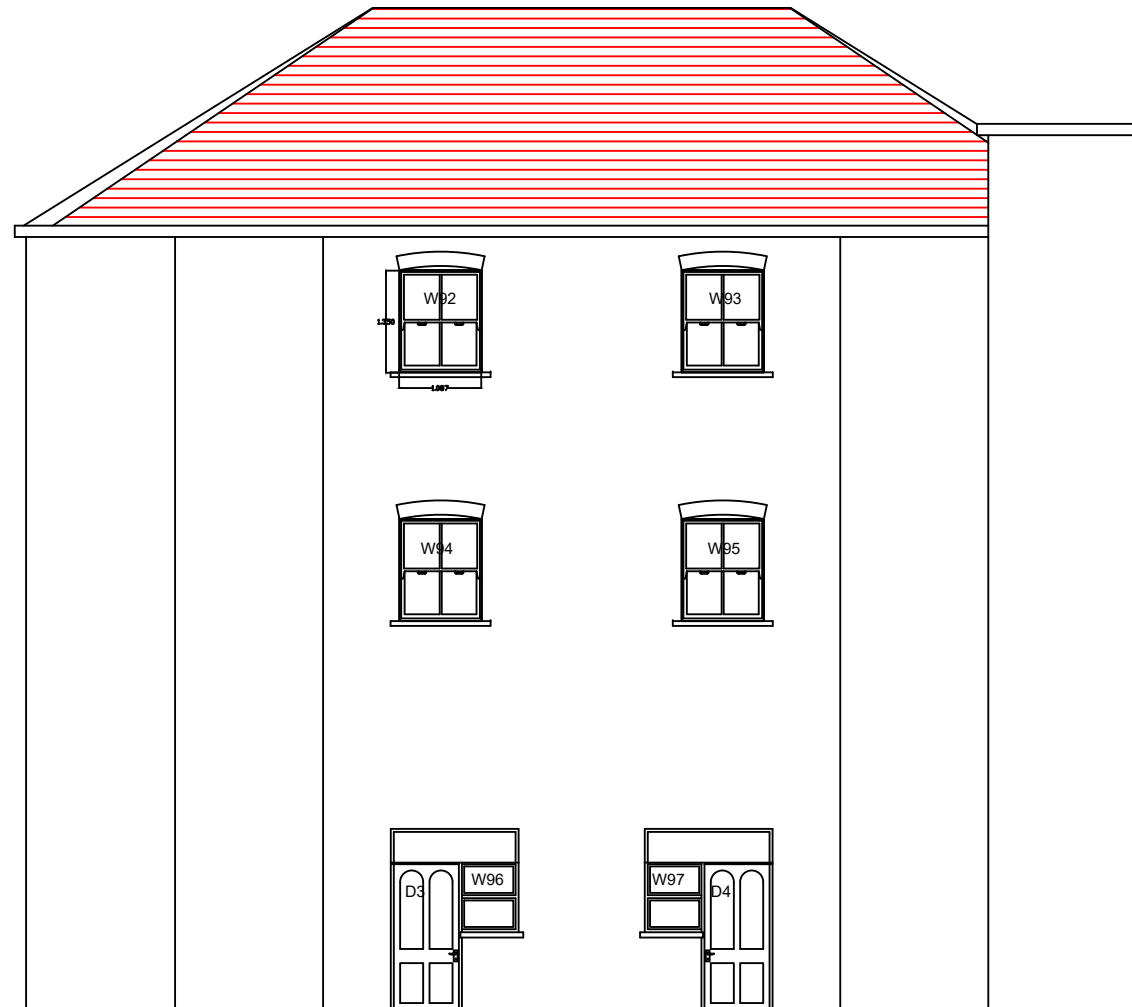


PROPOSED ARE TIMBER WINDOWS LIKE FOR LIKE
SLIMLITE DOUBLE GLAZED TO MATCH EXISTING



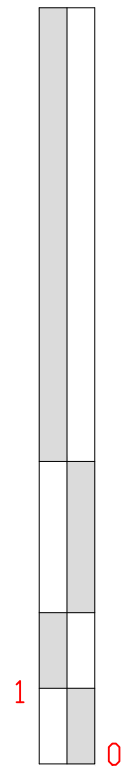
Proposed are replacement for single glazed sash window to like for like timber slim-lite Double glazed sash window.

Proposed are replacement for single glazed sash window to like for like timber slim-lite Double glazed sash window.

SIDE ELEVATION
(Proposed)

Notes:

10 Meter



1:100



EMPLOYER'S AGENTS & PROJECT MANAGERS
UNIT A COURT HOUSE, 11A HIGH STREET
BARNET EN5 5UJ
TEL: 020 8446 5537
E-MAIL: Planning@walkercc.co.uk

TITLE
PROPOSED ELEVATIONS

PROJECT
62-64 West end Lane

CLIENT
GENESIS HOUSING ASSOCIATION / KIER

SCALE: AS IDENTIFIED
CAD FILE: -
DATE: 11.14.18
DRAWN BY: PPM
CHECKED:

PROJECT NO.	DRAWING NO.	REVISION
4253	4253/WM/06	0