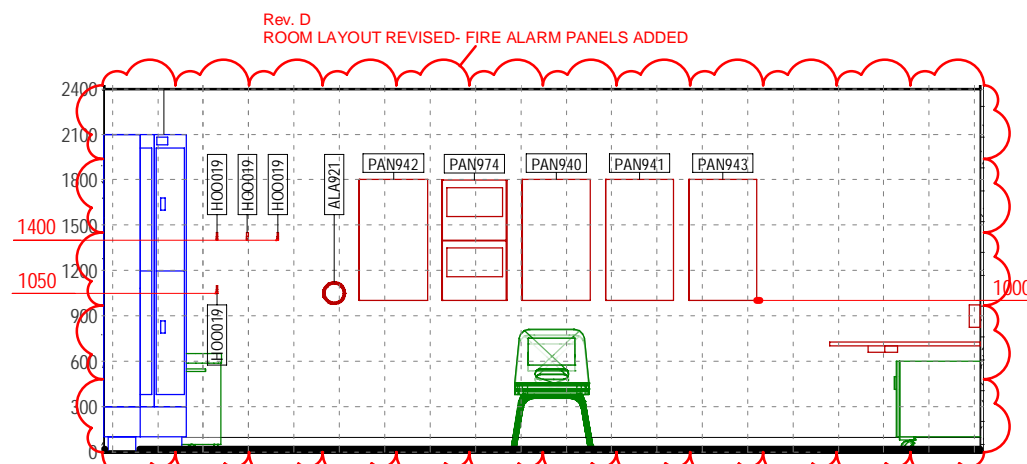
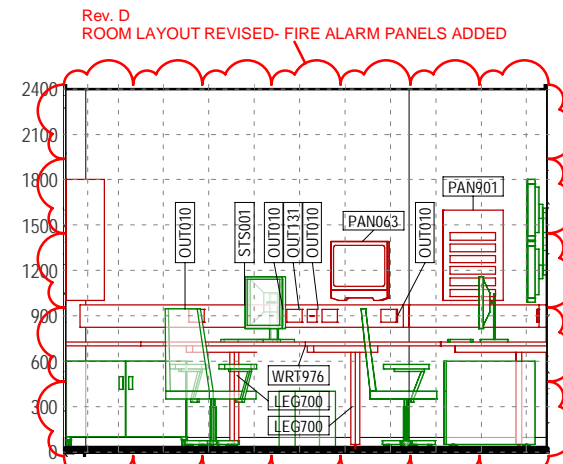


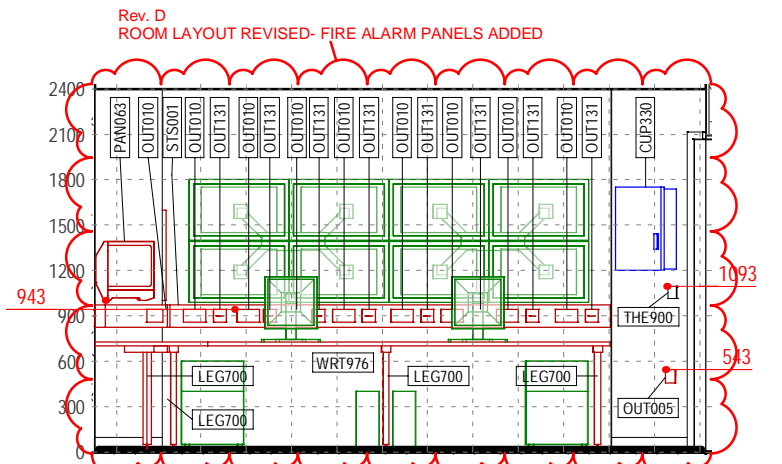
1 SEC. BASE / FIRE CONTR FM104 - 1  
190224 1:50



2 SEC. BASE / FIRE CONTR FM104 - 2  
190224 1:50

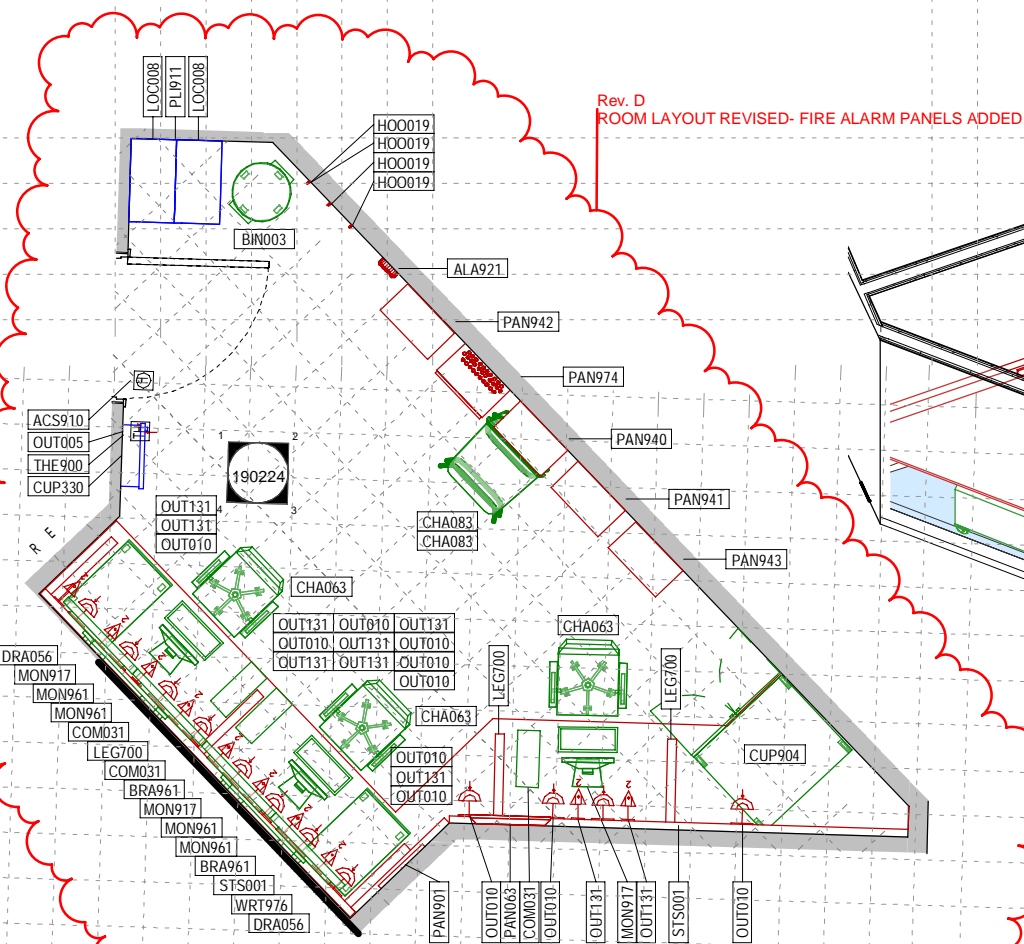


3 SEC. BASE / FIRE CONTR FM104 - 3  
190224 1:50

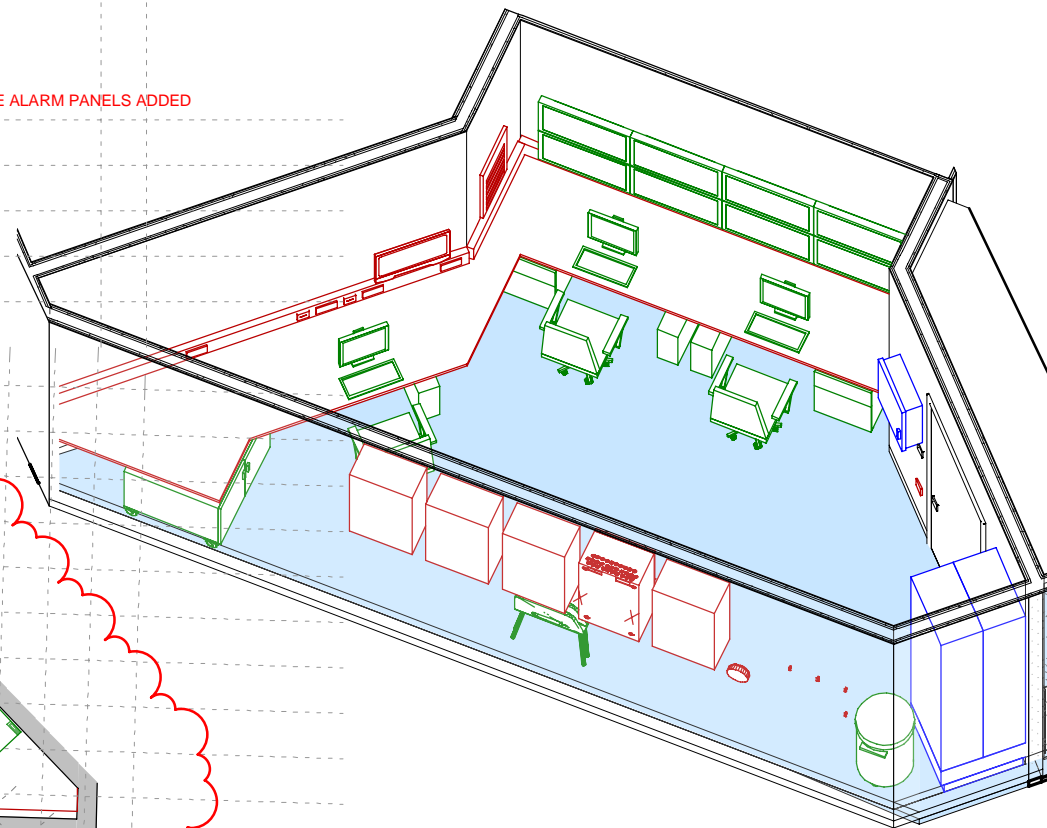


4 SEC. BASE / FIRE CONTR FM104 - 4  
190224 1:50

NOTE: LIGHTING TO BE PIR



5 SECURITY BASE / FIRE CONTR FM104 - plan  
190224 1:50



6 SECURITY BASE / FIRE CONTR FM104 - 3D View  
190224

SECURITY BASE / FIRE CONTR FM104 - Component Schedule

ADBDGroup	ADBDCode	ADBDDescription	Count
1	ACS910	Request To Exit Via Door Handle	1
1	ALA921	FIRE ALARM, interface, wall mounted	1
1	HOO019	HOOK, single, wall mounted, Robe Hook, Brushed Aluminium. (Laidlaw Solutions LA21)	4
1	LEG700	LEG SUPPORT to worktop, coated steel with adjustable foot to suit 750H	5
1	OUT005	SOCKET outlet switched 13amp single, wall mounted	1
1	OUT010	SOCKET outlet switched 13amp twin, wall/trunking mounted	12
1	OUT131	SOCKET outlet double data/voice, wall/trunking mounted	10
1	PAN063	PANEL: Nurse Call Indicator, Flat Screen, wall mounted on bracket.	1
1	PAN901	PANEL indicator, panic alarm	1
1	PAN940	PANEL Smoke control panel, 800H x 450W x 250D, wall mounted	1
1	PAN941	PANEL Fire mimic panel, 800H x 450W x 250D, wall mounted	1
1	PAN942	PANEL Fireman ventilation control panel (override), 800H x 450W x 250D, wall mounted	1
1	PAN943	PANEL Disabled refuge control panel, 800H x 450W x 250D, wall mounted	1
1	PAN974	PANEL, Fire Alarm indicator, 430(W)x796(H)x260(D)+20, wall mounted	1
1	STS001	SERVICES TRUNKING SYSTEM, for electrical power, data, length as shown	3
1	THE900	Thermostat (Temperature Control)	1
1	WRT976	WORKTOP, non-clinical, 3105W 700D	1
2	CUP330	CUPBOARD, key, 200 hooks, lockable, wall mounted, 550H 380W 140D	1
2	LOC008	LOCKER clothes, single, 2 compartments, 1800H 300W 550D	2
2	PLI911	PLINTH, 550D, 300H, length to suit	1
3	BIN003	BIN, disposal, general purpose, liner, mobile	1
3	BRA961	WALL MOUNT FOR 4 MONITORS UP TO 27", for security monitors	2
3	CHA063	CHAIR, height adjustable, with arms, high back, swivel, 5 star base, on castors	3
3	CHA083	CHAIR, stacking, polypropylene, with back and seat pads	2
3	COM031	COMPUTER CPU	3
3	CUP904	CUPBOARD, base, mobile, 2 doors, 800W 600D, 600H	1
3	DRA056	DRAWER UNIT, 2 drawer, lockable, on castors, 600H 410W 600D	2
3	MON917	MONITOR and CONTROL for CCTV, complete with flat screen monitor, keyboard and digital recorder (computer)	3
		Derogations from FB, SOA, and HBN guidance.	8

There are no specific HBN's relating to Facilities Management.

The SOA V3 (whole building support) is very indicative, and the current layouts have been developed with advice from various consultants and Trust advisors.

Derogation required from HBN 00-03 Figure 109 - page 127 (Space requirement for an administrative workstation) - 600mm required for ambulant passing, whereas approx. 330mm has been provided.

REVISION	DATE	DESCRIPTION	DRW	CHK	APP
C	2018.03.19	Updated & issued for Stage 4B Acceptance	PS	PG	SC
D	2018.10.03	Updated following ongoing MEP co-ordination	RV	PG	KB

PROJECT	ISSUER	AREA	LEVEL	TYPE	TRADE	SEQUENCE	REVISION
P4PBT	STW	AAB	GND	RDS	A31	190224	D

**DRAWING TO SUPPORT THE DISCHARGE OF PLANNING CONDITION 34 AND BREEM HEA 06.2**  
STW 12/10/2018

University College London Hospitals **NHS**  
NHS Foundation Trust

ORIGINATOR  
**Scott Tallon Walker Architects**

LINKED MODEL SCHEDULE  
P4PBT-CRE-SAB-SL-M3-A21-213002.rvt  
P4PBT-STW-AFA-SL-M3-A31-100060.rvt

SCALE @ A3  
1:50  
BIM FILE NAME - REVISION  
P4PBT-STW-AAB-SL-M3-A31-100051 - P22  
FIRST ISSUE DATE  
2016.01.29  
PROPOSED STATUS  
S4 - FOR ACCEPTANCE