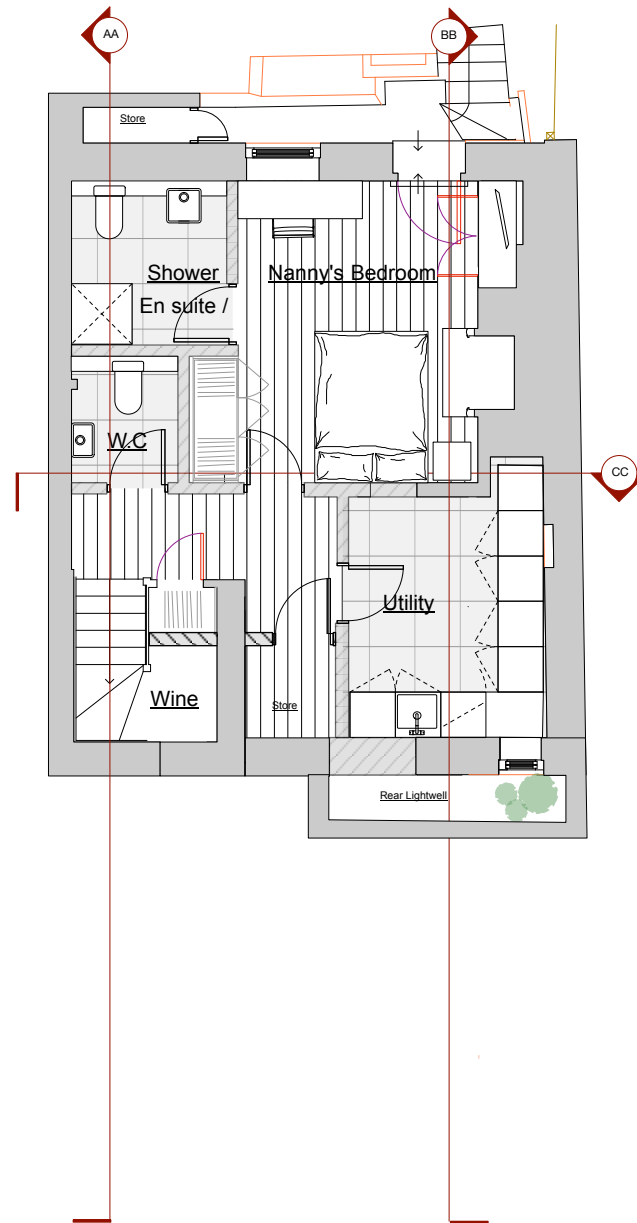
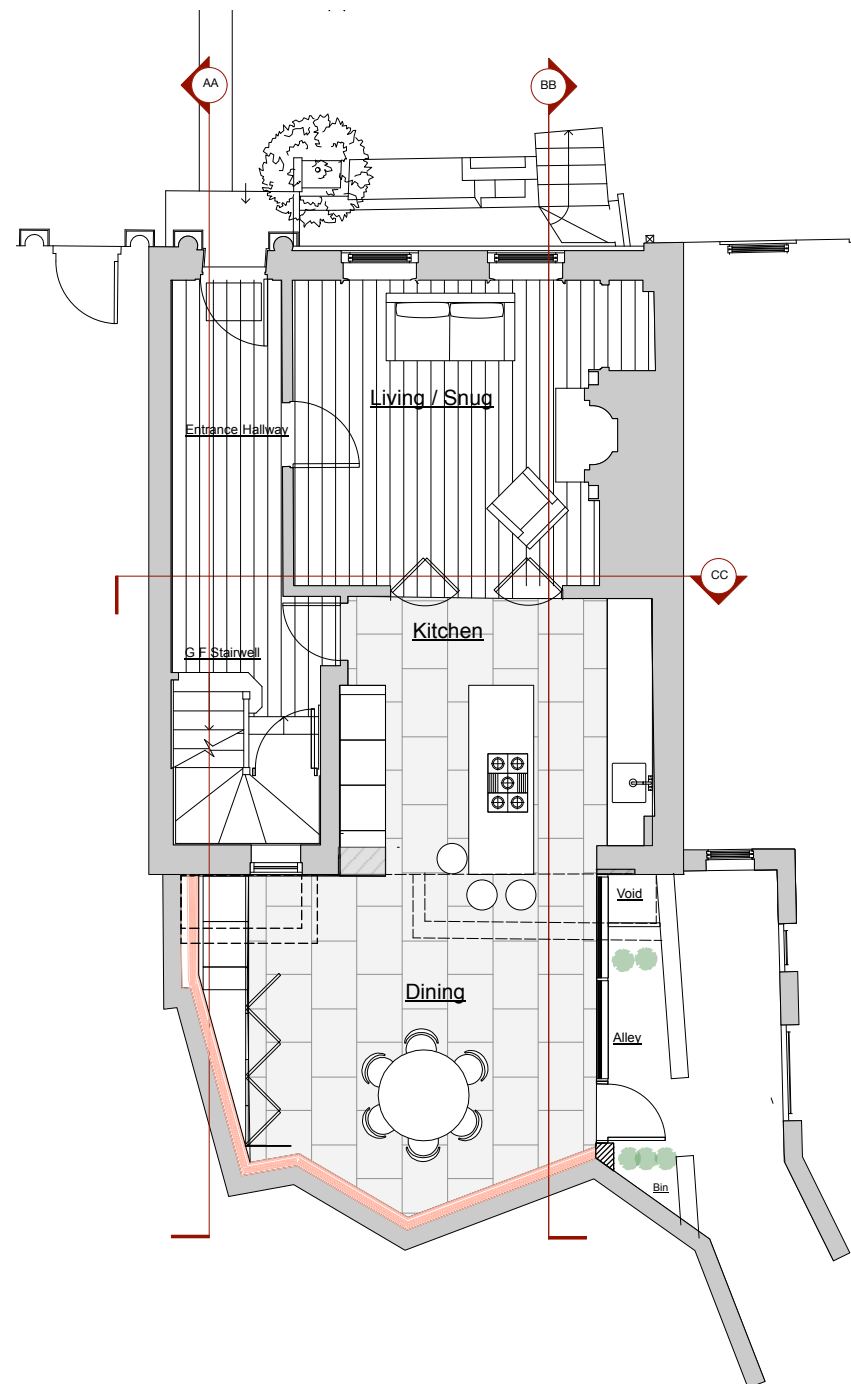


GENERAL NOTES.
 All dimensions to be checked on site prior to commencement of any works, and/or preparation of any shop drawings.
 Sizes of and dimensions to any structural elements are indicative only. See structural engineers drawings for actual sizes / dimensions.
 Sizes of and dimensions to any service elements are indicative only. See service engineers drawings for actual sizes and dimensions.
 This drawing to be read in conjunction with all relevant Architect's drawings, specifications and other Consultants' information.

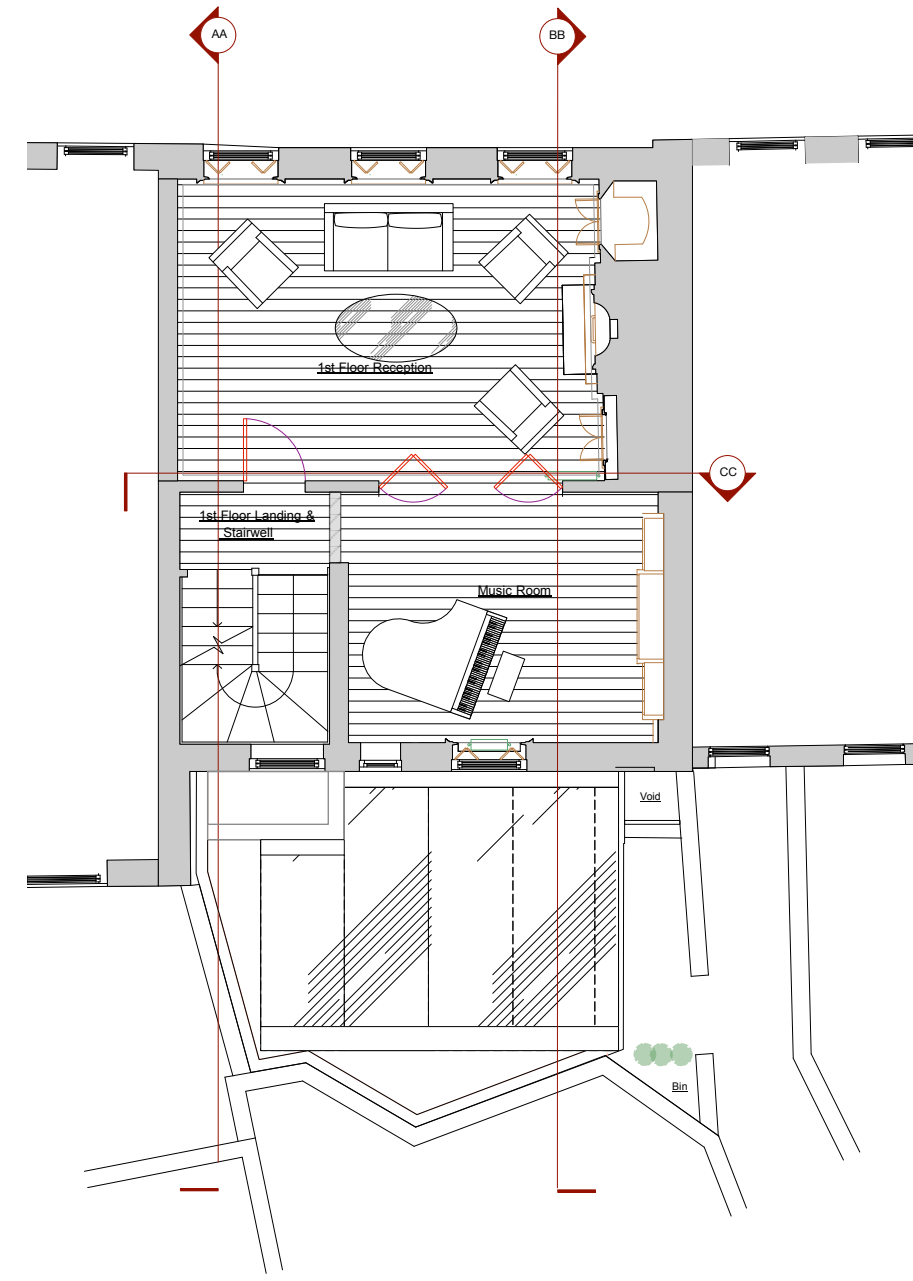
DO NOT SCALE FROM THIS DRAWING.



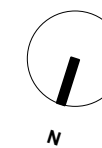
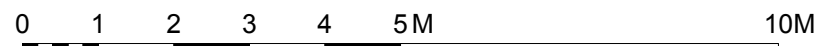
1 PROPOSED LOWER GROUND FLOOR PLAN
 1:50 @A1



2 PROPOSED GROUND FLOOR PLAN
 1:50 @A1



3 PROPOSED FIRST FLOOR PLAN
 1:50 @A1



revision	description	date	initials
dwg type PROPOSED			
dwg status PLANNING			
Sacks Maguire Architects 155a Regents Park Road London NW1 8BB Telephone 020 7722 9298 fax 020 7586 9059			
Project 3 Upper Terrace, London - NW3 6RH			
Title Proposed Lower Ground Floor , Ground Floor Plan / First Floor Plan			
Client David Loewi, Rolant Hergert			
scale 1:50 @A1	drawn huld	date June 2018	
job number 682	drawing number P101	revision /	