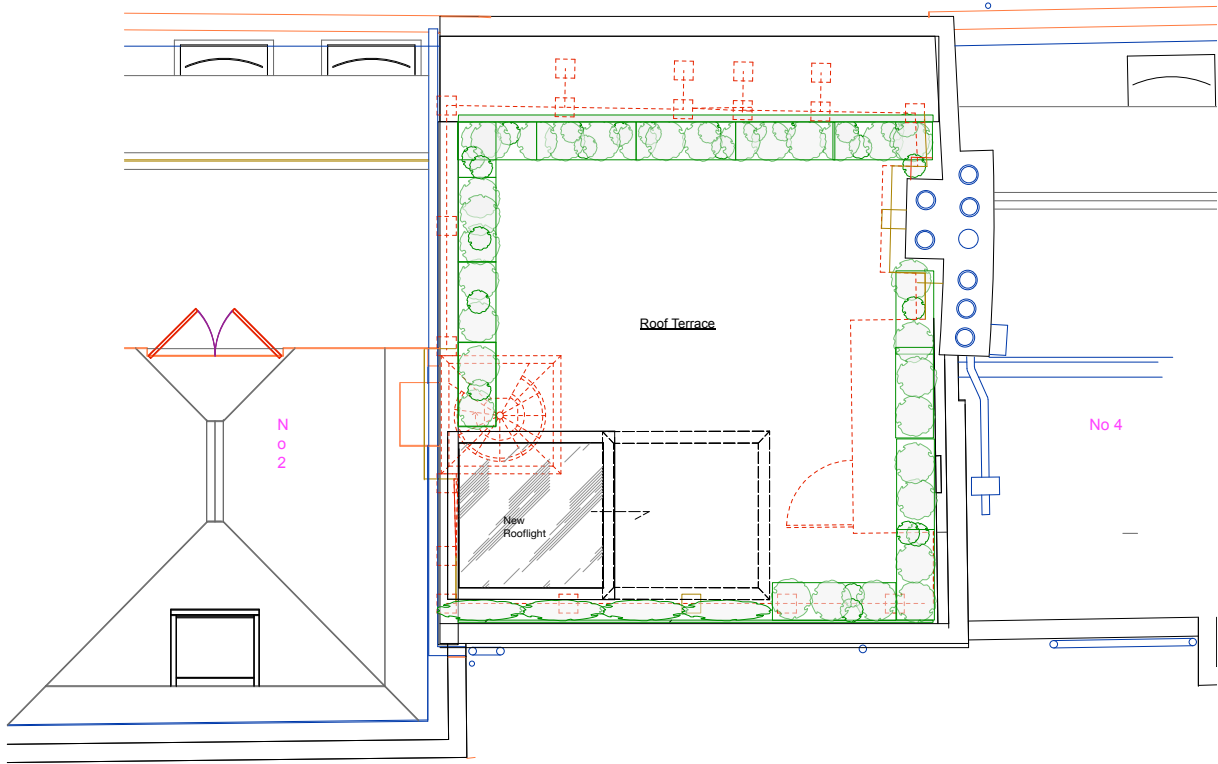


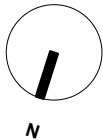
GENERAL NOTES:
All dimensions to be checked on site prior to commencement of any works, and/or preparation of any shop drawings.
Sizes of and dimensions to any structural elements are indicative only.
See structural engineers drawings for actual sizes / dimensions.
Sizes of and dimensions to any service elements are indicative only.
See service engineers drawings for actual sizes and dimensions.
This drawing to be read in conjunction with all relevant Architect's drawings, specifications and other Consultants' information.

DO NOT SCALE FROM THIS DRAWING.



2 DEMOLITION ROOF TERRACE PLAN
1:50 @A1

0 1 2 3 4 5M 10M



revision	description		date	initials
dwg type	PROPOSED			
dwg status	PLANNING			
Sacks Maguire Architects				
155a Regents Park Road		London NW1 8BB		
Telephone 020 7722 9298		fax 020 7586 9059		
Project				
3 Upper Terrace, London - NW3 6RH				
Title				
Demolition Roof Terrace Plan				
Client				
David Loewi, Rolant Hergert				
scale	1:50 @A1 1:100 @A3	drawn	huld	date
job number	682	drawing number	P52	June 2018
			revision	/