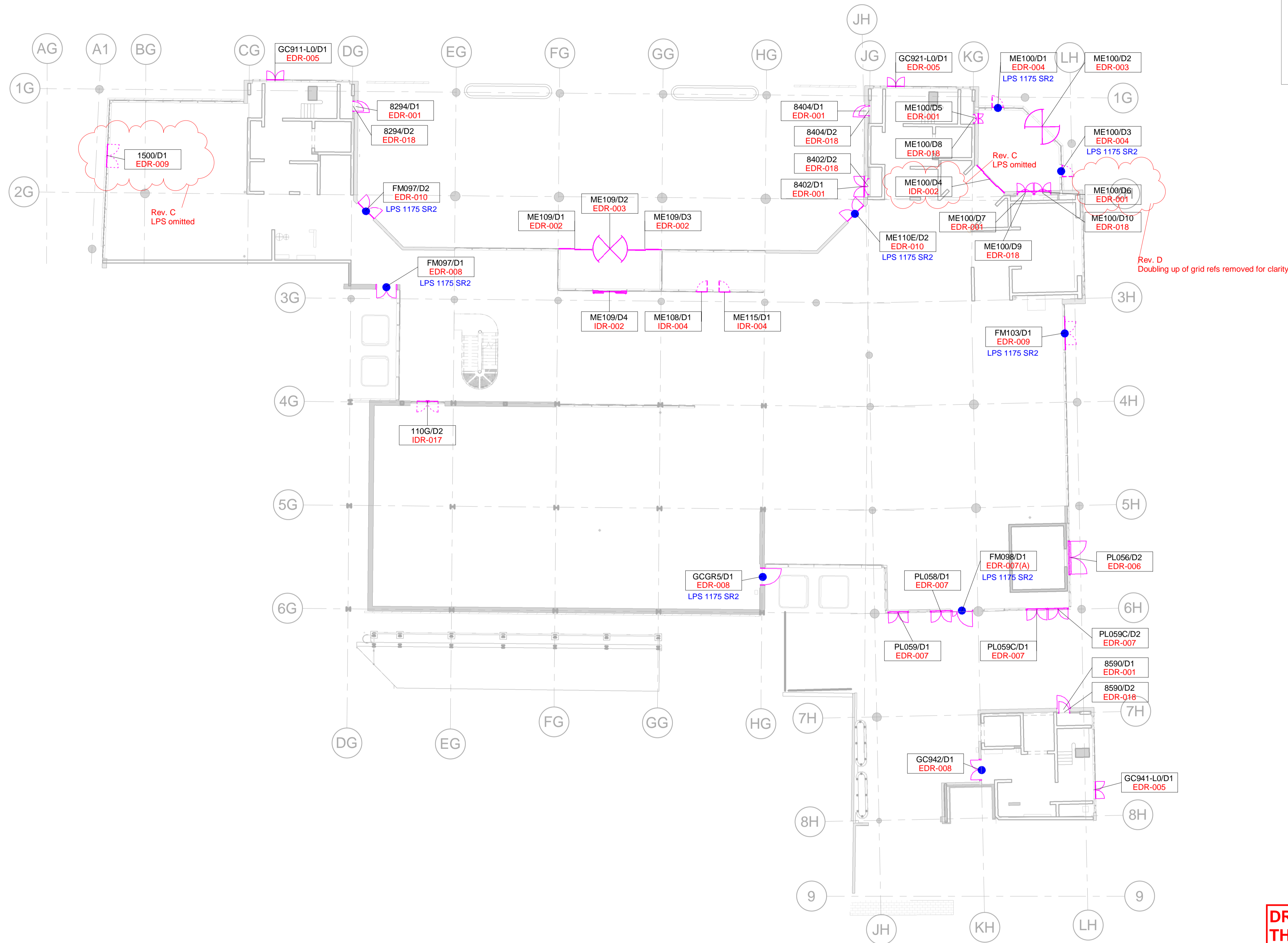


Door Number (Room No based)	Level	Family	Structural Opening	Minimum Effective Clear Width	Specification Clause	Door Type	Fire Rating	Leaf Swing	Acoustic Rating	Security Rating	Access Control	Magnetic Card Reader	Security Door Contact	Magnetic Door Lock	Exit Push Button	Emergency Exit Push Button	Remote Key Pad	Fire Alarm Interface	Door Security Power Supply Unit	230V Power Supply	WiFi Door Controller	Audio Entry Intercom	Video Intercom
110G/D2	Level 00	STW_DoorsetsDR-017PPCAluminiumGlazed2.1.20_DoubleEqual	1850x2750	1740 (1740 -HBN 00-04-)	2.1.20	IDR-017	FD60S	DD	-	-	ID/HW	Y	Y (x2)	Y (x2)	Y	Y							
1500/D1	Level 00	STW_DoorsetsFramelessAutomaticEDR-009DoubleGlazed2.1.20_DoubleEqual	2000x2750	2000 (2000 -PART M)	2.1.20	EDR-009	-	DD	-	-	KL	-	-	-	-	-							
8294/D1	Level 00	STW_DoorsetsNoVisionPanelEDR-001GRCClaidMetal2.1.20_Single	1080x2750	850 (ACCESS)	2.1.20	EDR-001	-	R	-	-	KL	-	-	-	-	-							
8294/D2	Level 00	Exterior,Single,Hinged,noVisionPanel,MetalLeaf,MetalFrame,PolyesterPowderCoated,L211217	910 x 1951	850 (ACCESS)	2.1.20	EDR-018	FD60S	R	-	-	KL	-	-	-	-	-							
8402/D1	Level 00	STW_DoorsetsNoVisionPanelEDR-001GRCClaidMetal2.1.20_DoubleEqual	1850x2600	1200 (ACCESS)	2.1.20	EDR-001	-	DD	-	-	KL	-	-	-	-	-							
8402/D2	Level 00	STW_DoorsetsRiserDoorsetMetalPPCL21.1.201_DoubleEqual	1400 x 1950	1200 (ACCESS)	2.1.20	EDR-018	FD60S	DD	-	-	KL	-	-	-	-	-							
8404/D1	Level 00	STW_DoorsetsNoVisionPanelEDR-001GRCClaidMetal2.1.20_Single	1080x2750	850 (ACCESS)	2.1.20	EDR-001	-	L	-	-	KL	-	-	-	-	-							
8404/D2	Level 00	Exterior,Single,Hinged,noVisionPanel,MetalLeaf,MetalFrame,PolyesterPowderCoated,L211217	910 x 1951	850 (ACCESS)	2.1.20	EDR-018	FD60S	L	-	-	KL	-	-	-	-	-							
8590/D1	Level 00	STW_DoorsetsNoVisionPanelEDR-001GRCClaidMetal2.1.20_Single	1200x2750	850 (ACCESS)	2.1.20	EDR-001	-	L	-	-	KL	-	-	-	-	-							
8590/D2	Level 00	Exterior,Single,Hinged,noVisionPanel,MetalLeaf,MetalFrame,PolyesterPowderCoated,L211217	1000 x 1950	850 (ACCESS)	2.1.20	EDR-018	FD60S	L	-	-	KL	-	-	-	-	-							
FM097/D1	Level 00	STW_DoorsetsVisionPanelEDR-008AluminiumCladMetal2.1.20_DoubleEqual	1850x2750	1600 (1600 -HBN 00-04-)	2.1.20	EDR-008	-	DD	-	LPS1175 SR2	ID/HW	Y	Y (x2)	Y (x2)	Y	Y							
FM097/D2	Level 00	STW_DoorsetsEDR-010PPCMetalDoubleGlazed2.1.20_DoubleEqual	2000x2750	1740 (1740 -HBN 00-04-)	2.1.20	EDR-010	-	DD	-	LPS1175 SR2	ID/HW/KPO	Y	Y (x2)	Y (x2)	Y	Y							
FM098/D1	Level 00	STW_DoorsetsLouvedBackPanelEDR-007APPCAluminium2.1.20_DoubleUnequal	1825x2750	800 (800 -PART M)	2.1.20	EDR-007(A)	-	L	-	LPS1175 SR2	ID/HW	Y	Y	Y	Y	Y							
FM103/D1	Level 00	STW_DoorsetsFramelessAutomaticEDR-009DoubleGlazed2.1.20_DoubleEqualSideLight	2000x2750	2000 (2000 -PART M)	2.1.20	EDR-009	-	DD	-	LPS1175 SR2	ID/HW	Y+DIS	Y (x2)	Y (x2)	Y	Y							
GC911-L0/D1	Level 00	STW_DoorsetsFinalExitEscapeDoorsEDR-005SteelDoubleGlazed2.1.20_DoubleEqual	1500x2750	1200 (1200 -FIRE-)	2.1.20	EDR-005	-	DD	-	-	FEPB	-	Y (x2)	-	-	PUSH PAD							
GC921-L0/D1	Level 00	STW_DoorsetsFinalExitEscapeDoorsEDR-005SteelDoubleGlazed2.1.20_DoubleEqual	1500x2750	1200 (1200 -FIRE-)	2.1.20	EDR-005	-	DD	-	-	FEPB	-	Y (x2)	-	-	PUSH PAD							
GC941-L0/D1	Level 00	STW_DoorsetsFinalExitEscapeDoorsEDR-005SteelDoubleGlazed2.1.20_DoubleEqual	1500x2750	1200 (1200 -FIRE-)	2.1.20	EDR-005	-	DD	-	-	FEPB	-	Y (x2)	-	-	PUSH PAD							
GC942/D1	Level 00	STW_DoorsetsVisionPanelEDR-008AluminiumCladMetal2.1.20_DoubleEqual	1850x2750	1600 (1600 -PART M)	2.1.20	EDR-008	FD60S	DD	-	LPS1175 SR2	ID/HW	Y	Y (x2)	Y (x2)	Y	Y							
GCGR5/D1	Level 00	STW_DoorsetsVisionPanelEDR-008AluminiumCladMetal2.1.20_Single	1500x2750	1200 (1200 -FIRE-)	2.1.20	EDR-008	-	L	Rw31dB	LPS1175 SR2	ID/HW	Y	Y	Y	Y	Y							
ME100/D1	Level 00	STW_DoorsetsAutomaticEntranceDoorsEDR-004PPCMetalDoubleGlazed2.1.20_Single	1000x2750	1000 (1000 -PART M)	2.1.20	EDR-004	-	L	-	LPS1175 SR2	ID/HW	Y+DIS	Y	Y	Y	Y							
ME100/D2	Level 00	STW_DoorsetsMainCornerEntrance&DropOffAreaDoorsEDR-003StainlessSteelGlazed2.1.20_Revolving	3100x2750	-	2.1.20	EDR-003	-	REV	-	-	KL	-	Y	-	-	-							
ME100/D3	Level 00	STW_DoorsetsAutomaticEntranceDoorsEDR-004PPCMetalDoubleGlazed2.1.20_Single	1000x2750	1000 (1000 -PART M)	2.1.20	EDR-004	-	R	-	LPS1175 SR2	ID/HW	Y+DIS	Y	Y	Y	Y							
ME100/D4	Level 00	STW_DoorsetsAutomaticDR-002APPCAluminiumDoubleGlazed2.1.20_BiPartingSliding	3426x2750	1700 (1200 -HBN 00-04-)	2.1.20	IDR-002	-	DD	-	-	ID/HW	-	Y	-	Y	Y							
ME100/D5	Level 00	STW_DoorsetsNoVisionPanelEDR-001GRCClaidMetal2.1.20_DoubleEqual	900x2600	650 (ACCESS)	2.1.20	EDR-001	-	DD	-	-	KL	-	-	-	-	-							
ME100/D6	Level 00	STW_DoorsetsNoVisionPanelEDR-001GRCClaidMetal2.1.20_DoubleEqual	1500x2600	1200 (ACCESS)	2.1.20	EDR-001	-	DD	-	-	KL	-	-	-	-	-							
ME100/D7	Level 00	STW_DoorsetsNoVisionPanelEDR-001GRCClaidMetal2.1.20_DoubleEqual	1500x2600	1200 (ACCESS)	2.1.20	EDR-001	-	DD	-	-	KL	-	-	-	-	-							
ME100/D8	Level 00	STW_DoorsetsRiserDoorsetMetalPPCL21.1.201_DoubleEqual	750 x 1951	650 (ACCESS)	2.1.20	EDR-018	FD60S	DD	-	-	KL	-	-	-	-	-							
ME100/D9	Level 00	STW_DoorsetsRiserDoorsetMetalPPCL21.1.201_DoubleEqual	1400 x 1951	1200 (ACCESS)	2.1.20	EDR-018	FD60S	DD	-	-	KL	-	-	-	-	-							
ME100/D10	Level 00	STW_DoorsetsRiserDoorsetMetalPPCL21.1.201_DoubleEqual	1400 x 1951	1200 (ACCESS)	2.1.20	EDR-018	FD60S	DD	-	-	KL	-	-	-	-	-							
ME108/D1	Level 00	STW_DoorsetsDR-004PPCMetalDoubleGlazed2.1.20_Single	1000x2750	1200 (BARRIATRIC)	2.1.20	IDR-004	-	R	-	-	KL	-	-	-	-	-							
ME109/D1	Level 00	STW_DoorsetsAutomaticEDR-002PPCAluminiumDoubleGlazed2.1.20_Sliding	2900x2750	1400 (1400* -HBN 00-04-)	2.1.20	EDR-002	-	R	Rw31dB	-	KL	-	Y	-	-	-							
ME109/D2	Level 00	STW_DoorsetsMainCornerEntrance&DropOffAreaDoorsEDR-003StainlessSteelGlazed2.1.20_Revolving	3100x2750	-	2.1.20	EDR-003	-	REV	-	-	ID/HW	-	Y	-	-	-							
ME109/D3	Level 00	STW_DoorsetsAutomaticEDR-002PPCAluminiumDoubleGlazed2.1.20_Sliding	2900x2750	1400 (1400* -HBN 00-04-)	2.1.20	IDR-002	-	L	Rw31dB	-	KL	-	Y	-	-	-							
ME109/D4	Level 00	STW_DoorsetsAutomaticDR-002APPCAluminiumDoubleGlazed2.1.20_BiPartingSliding	3000x2750	2000 (1400* -HBN 00-04-)	2.1.20	IDR-002	-	DD	-	-	KL	-	-	-	-	-							
ME110E/D2	Level 00	STW_DoorsetsEDR-010PPCMetalDoubleGlazed2.1.20_DoubleEqual	2000x2750	1740 (1740 -HBN 00-04-)	2.1.20	EDR-010	-	DD	-	LPS1175 SR2	ID/HW	Y	Y (x2)	Y (x2)	Y	Y							
ME115/D1	Level 00	STW_DoorsetsDR-004PPCMetalDoubleGlazed2.1.20_Single	1000x2750	1200 (BARRIATRIC)	2.1.20	IDR-004	-	L	-	-	KL	-	-	-	-	-							
PL056/D2	Level 00	STW_DoorsetsLouvedUKJPNExternalEDR-006Metal2.1.20_DoubleEqual	3000x2750	2400 (2400 UKJPN)	2.1.20	EDR-006	-	DD	-	-	KL	-	-	-	-	-							
PL058/D1	Level 00	STW_DoorsetsLouvedEDR-007PPCAluminium2.1.20_DoubleEqual	1800x2380	1600 (1600 -PART M)	2.1.20	EDR-007	-	DD	-	-	KL	-	-	-	-	-							
PL059/D1	Level 00	STW_DoorsetsLouvedEDR-007PPCAluminium2.1.20_DoubleEqual	1800x2380	1600 (1600 -PART M)	2.1.20	EDR-007	-	DD	-	-	KL	-	-	-	-	-							
PL059C/D1	Level 00	STW_DoorsetsLouvedEDR-007PPCAluminium2.1.20_DoubleEqual	1800x2750	1200 (ACCESS)	2.1.20	EDR-007	-	DD	-	-	KL	-	-	-	-	-							
PL059C/D2	Level 00	STW_DoorsetsLouvedEDR-007PPCAluminium2.1.20_DoubleEqual	1800x2750	1200 (ACCESS)	2.1.20	EDR-007	-	DD	-	-	KL	-	-	-	-	-							
9442/D1	Level 01	STW_DoorsetsDR-012PPCAluminiumGlazed2.1.20_DoubleEqual	1650x2650	1600 (1600 -HBN 00-04-)	2.1.20	IDR-012	FD60S	DD	-	-	ID/HW	Y	Y (x2)	Y (x2)	Y	Y							
9528/D1	Level 01	STW_DoorsetsDR-012PPCAluminiumGlazed2.1.20_DoubleEqual	1950x2670	1600 (1600 -HBN 00-04-)	2.1.20	IDR-012	FD60S	DD	-	-	ID/HW	Y	Y (x2)	Y (x2)	Y	Y							
9973/D1	Level 02	STW_DoorsetsDR-012PPCAluminiumGlazed2.1.20_DoubleEqual	1650x2650	1600 (1600 -HBN 00-04-)	2.1.20	IDR-012	FD60S	DD	-	-	ID/HW	Y	Y (x2)	Y (x2)	Y	Y							
10027/D1	Level 02	STW_DoorsetsDR-012PPCAluminiumGlazed2.1.20_DoubleEqual	1650x2650	1600 (1600 -HBN 00-04-)	2.1.20	IDR-012	FD60S	DD	-	-	ID/HW	Y	Y (x2)	Y (x2)	Y	Y							
CC140/D2	Level 01	STW_DoorsetsDR-011PPCAluminiumDoubleGlazed2.1.20_DoubleEqual	1650x2650	1600 (1600 -HBN 00-04-)	2.1.20	IDR-011	FD60S	DD	-	-	ID/HW	Y	Y (x2)	Y (x2)	Y	Y							
CC158/D1	Level 01	STW_DoorsetsEDR-013PPCAluminiumGlazed2.1.20_Single	1500x2650	1200 (1200 -FIRE-)	2.1.20	EDR-013	-	R	Rw31dB	-	ID/HW	Y	Y	Y	Y	Y							
CC160/D2	Level 01	STW_DoorsetsEDR-013PPCAluminiumGlazed2.1.20_Single	1500x2650	900 (900 -FIRE-)	2.1.20	EDR-013	-	L	Rw31dB	-	ID/HW	-	Y	Y	Y	Y							
GC911-L1/D1	Level 01	STW_DoorsetsManualEDR005ASteelDoubleGlazed2.1.20_Single	750x3450	650 (ACCESS)	2.1.20	EDR-005(A)	-	L	-	-	KL	-	-	-	-	-							
GC921-L1/D1	Level 01	STW_DoorsetsManualEDR005ASteelDoubleGlazed2.1.20_Single	750x3450	650 (ACCESS)	2.1.20	EDR-005(A)	-	L	-	-	KL	-	-	-	-	-							
GC941-L1/D1	Level 01	STW_DoorsetsManualEDR005ASteelDoubleGlazed2.1.20_Single	750x3450	650 (ACCESS)	2.1.20	EDR-005(A)	-	R	-	-	KL	-	-	-	-	-							
SW101/D3	Level 01	STW_DoorsetsDR-011PPCAluminiumDoubleGlazed2.1.20_DoubleEqual	1950x2650	1600 (1600 -HBN 00-04-)	2.1.20	IDR-011	FD60S	DD	-	-	ID/HW	Y	Y (x2)	Y (x2)	Y	Y							
9528/D2	Level 03	STW_DoorsetsEDR-014PPCAluminiumGlazed2.1.20_DoubleEqual	1600x2650	1600 (1600 -HBN 00-04-)	2.1.20	EDR-014	-	DD	Rw31dB	-	ID/HW	Y	Y (x2)	Y (x2)	Y	Y							
9679/D1	Level 03	STW_DoorsetsEDR-014PPCAluminiumGlazed2.1.20_DoubleEqual	1600x2650	1600 (1600 -HBN 00-04-)	2.1.20	EDR-014	-	DD	Rw31dB	-	ID/HW	Y	Y	Y	Y	Y							
GC911-L2/D1	Level 02	STW_DoorsetsManualEDR005ASteelDoubleGlazed2.1.20_Single	750x3450	650 (ACCESS)	2.1.20	EDR-005(A)	-	L	-	-	KL	-	-										



**DRAWING TO SUPPORT
THE DISCHARGE OF
PLANNING CONDITION 34
AND BREEM HEA 06.2**

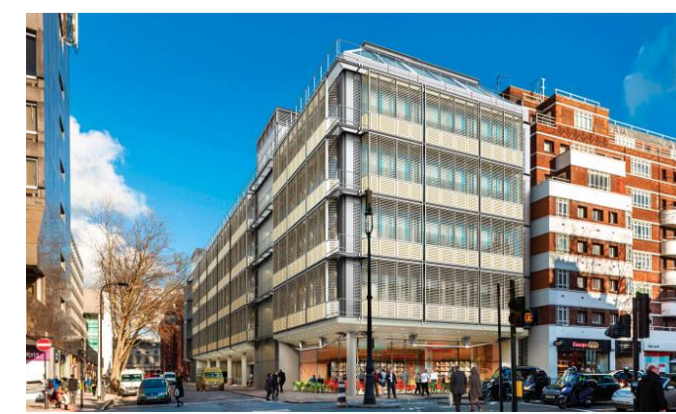
STW 12/10/2018

1 External Envelope Scope Plans - Level 00
191137 1:200

NOTES:

ALL REVISIONS

Rev	DATE	REVISION HISTORY	Dsg	Dw	Chk	App
D	2018.10.18	ByUK comments updated	STW	RM	KB	KB
C	10.10.18	Updated following ALO meeting	STW	RM	KB	KB
B	27.09.18	Facade door update	STW	RM	KB	KB
A	07/11/17	FAC - Facade Doors - First Issue	STW	ID	RM	KB



Head Office:
Elizabeth House,
39 York Road,
London, SE1 7NO.
Tel:020 7401 0020
Fax:020 7401 0030

www.bouygues-uk.com

University College London Hospitals **NHS**
NHS Foundation Trust

Name	Signature	Date
Designed by	STW	2017.11.07
Drawn by	ID	2017.11.07
Checked	RM	2017.11.07
Approved	KB	2017.11.07

ORIGINATOR

Scott Tallon Walker Architects

SCALE
1 : 200

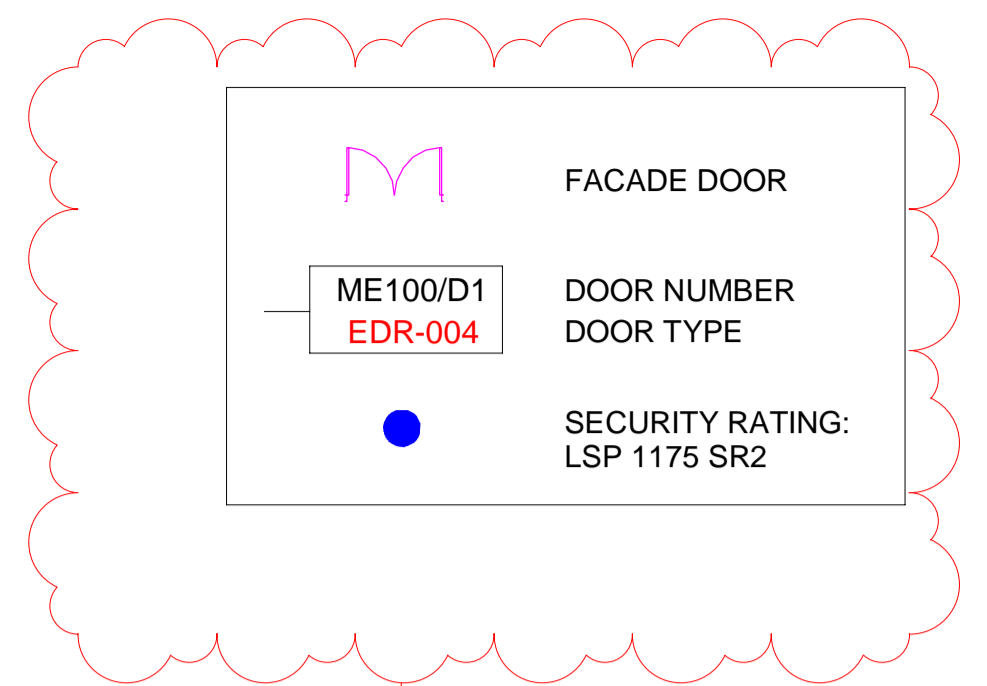
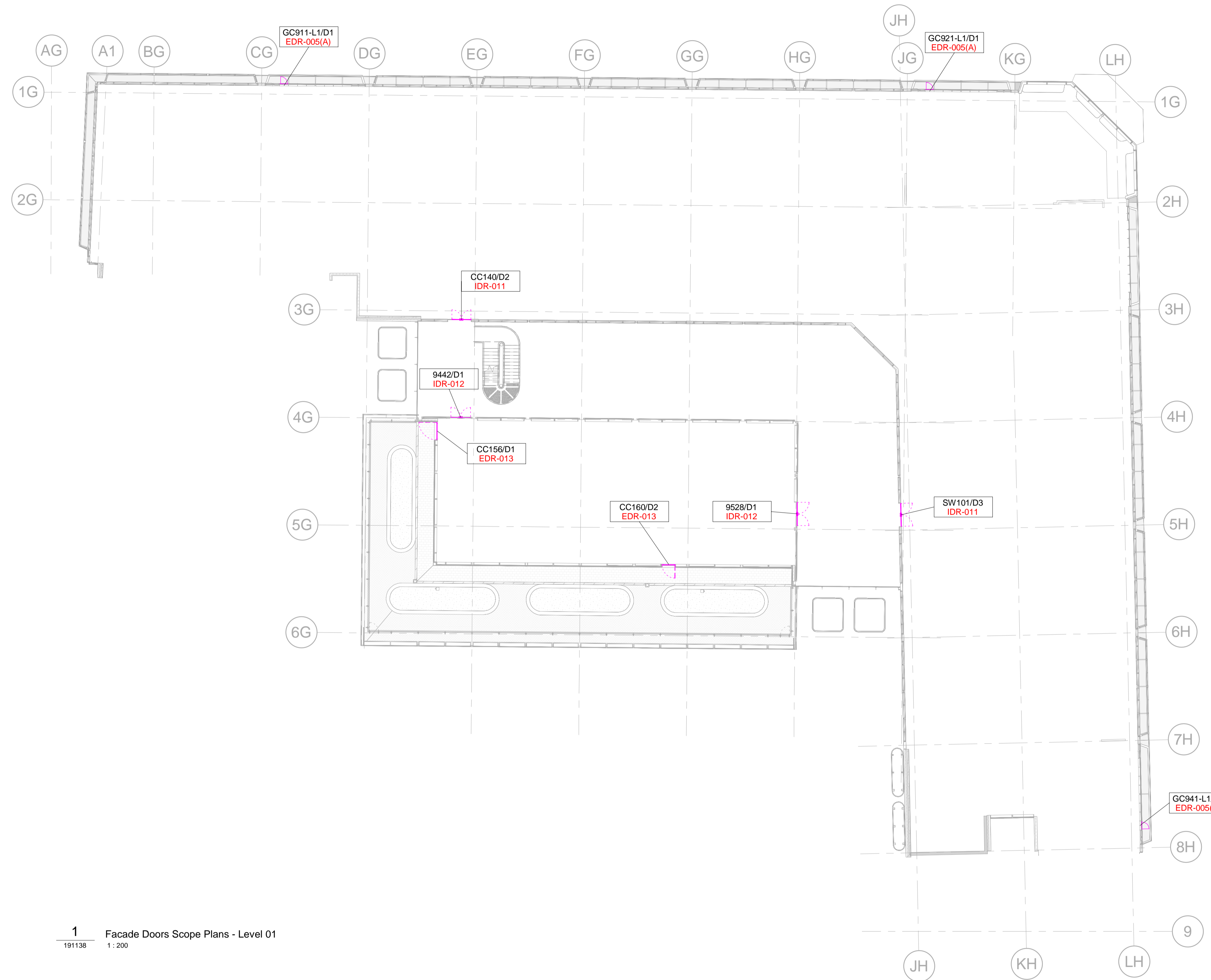
DATE
2017.11.07

PROPOSED STATUS
S4 - Issued for stage approval

DRAWING TITLE

Proton Beam Therapy - Phase 4
Facade Doors Scope Plans - Level 00

PROJECT	ISSUER	AREA	LEVEL	TYPE	TRADE	SEQUENCE	REV
P4PBT	STW	AFA	GND	SOW	A31	191137	D



Rev. B
Security doors added

1 Facade Doors Scope Plans - Level 01
191138 1:200

**DRAWING TO SUPPORT
THE DISCHARGE OF
PLANNING CONDITION 34
AND BREEM HEA 06.2**

STW 12/10/2018

NOTES:

ALL REVISIONS		REVISION HISTORY			
Rev	DATE	Dsg	Dw	Chk	App
B	27.09.18	Facade door update	STW	RM	KB
A	07/11/17	FAC - Facade Doors - First Issue	STW	ID	RM

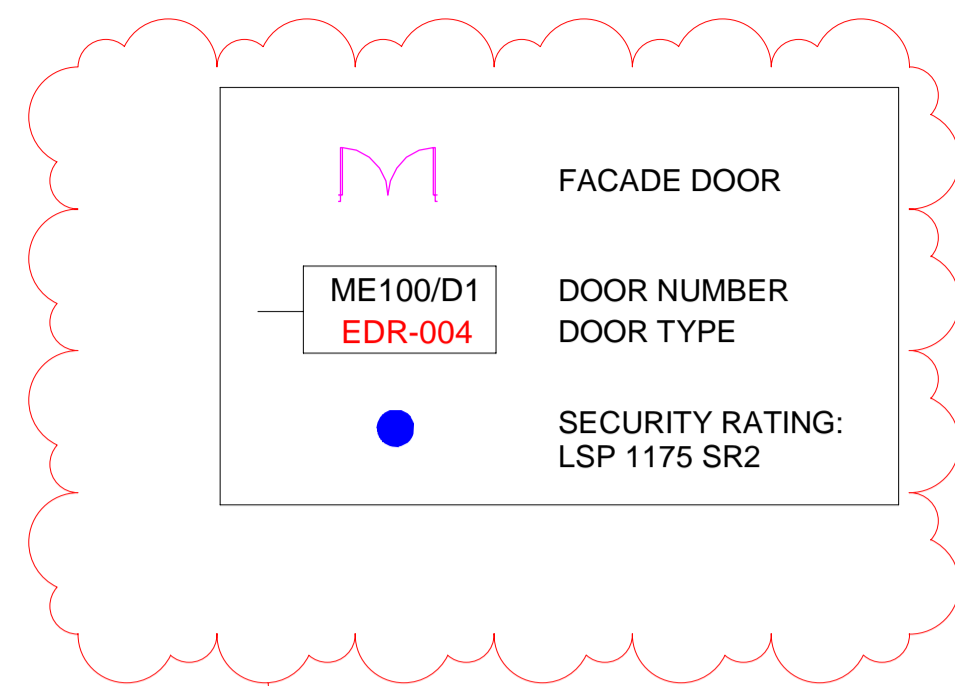
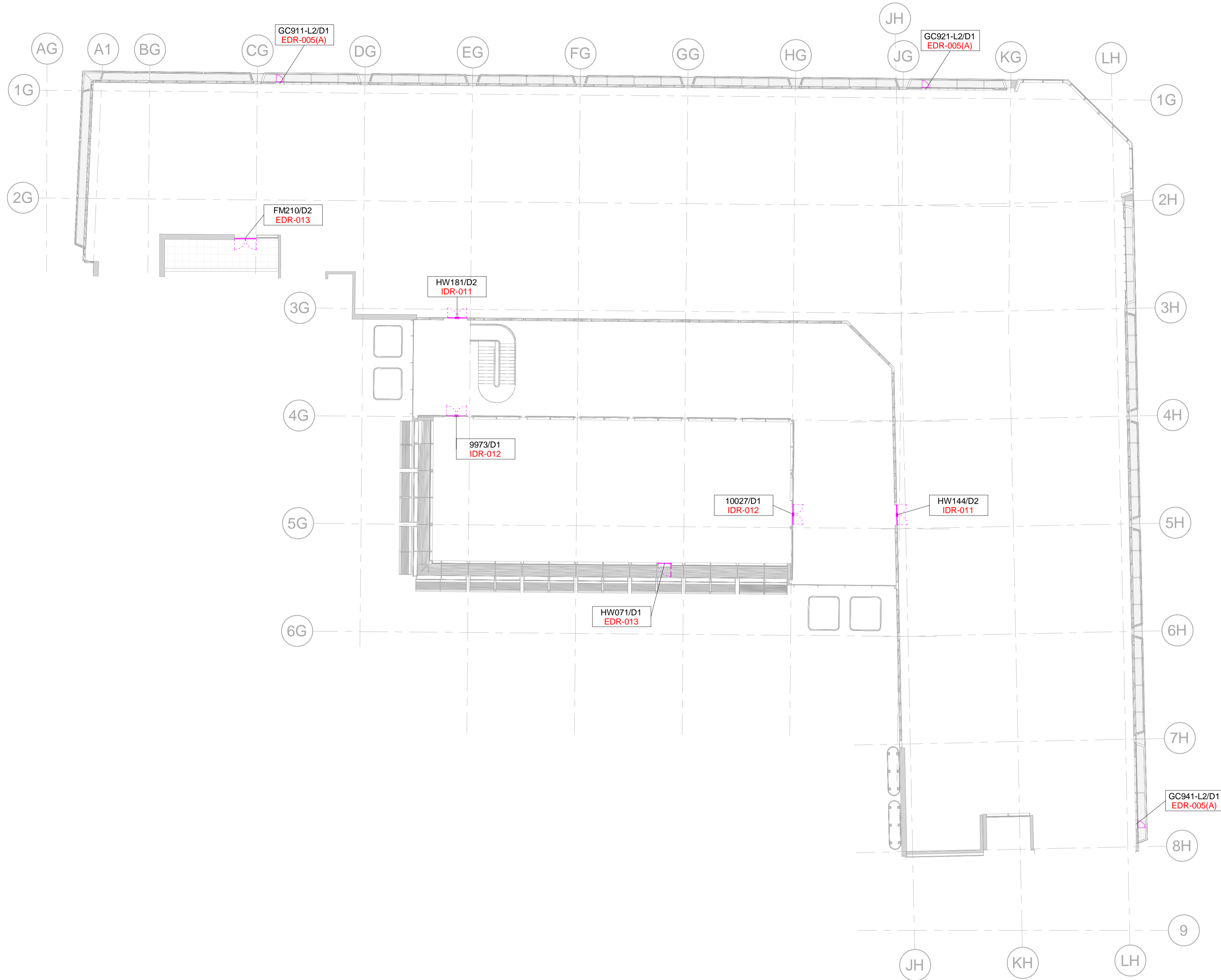


BOUYGUES
UK

Head Office:
Elizabeth House,
39 York Road,
London, SE1 7NO.
Tel:020 7401 0020
Fax:020 7401 0030
www.bouygues-uk.com

University College London Hospitals NHS NHS Foundation Trust		ORIGINATOR Scott Tallon Walker Architects	
Designed by STW	Name STW	Signature 	Date 2017.11.07
Drawn by ID	Name ID	Signature 	Date 2017.11.07
Checked RM	Name RM	Signature 	Date 2017.11.07
Approved KB	Name KB	Signature 	Date 2017.11.07
SCALE 1 : 200		@ A1 BIM FILE NAME P4PBT-STW-AFA-SL-M3-A31-100060	
FIRST ISSUE DATE 2017.11.07		PROPOSED STATUS S4 - Issued for stage approval	

DRAWING TITLE		Proton Beam Therapy - Phase 4 Facade Doors Scope Plans - Level 01					
PROJECT	ISSUER	AREA	LEVEL	TYPE	TRADE	SEQUENCE	REV
P4PBT	STW	AFA	01	SOW	A31	191138	B



Rev. B
Security doors added

1 Facade Doors Scope Plans - Level 02
191139 1:200

**DRAWING TO SUPPORT
THE DISCHARGE OF
PLANNING CONDITION 34
AND BREEAM HEA 06.2**

STW 12/10/2018

NOTES:

ALL REVISIONS						
Rev	DATE	REVISION HISTORY	Dsg	Dw	Chk	App
B	27.09.18	Facade door update	STW	RM	KB	KB
A	07/11/17	FAC - Facade Doors - First Issue	STW	ID	RM	KB



BOUYGUES
UK

Head Office:
Elizabeth House,
39 York Road,
London, SE1 7NO.
Tel: 020 7401 0020
Fax: 020 7401 0030
www.bouygues-uk.com

University College London Hospitals **NHS** NHS Foundation Trust

Name	Signature	Date
Designed by: STW		2017.11.07
Drawn by: ID		2017.11.07
Checked: RM		2017.11.07
Approved: KB		2017.11.07

ORIGINATOR: Scott Tallon Walker Architects

SCALE: 1:200 @ A1

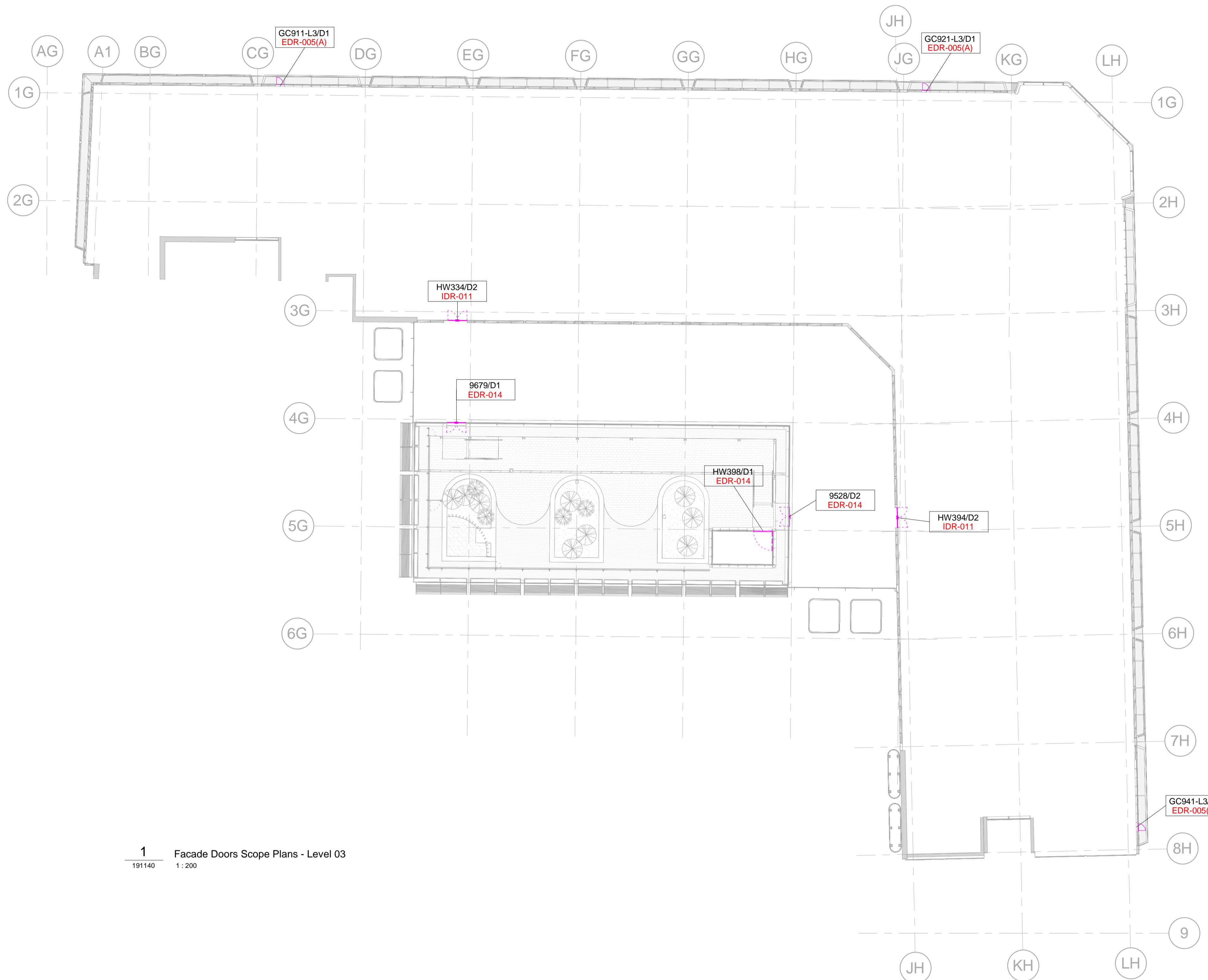
BIM FILE NAME: P4PBT-STW-AFA-SL-M3-A31-100060

FIRST ISSUE DATE: 2017.11.07

PROPOSED STATUS: S4 - Issued for stage approval

DRAWING TITLE: Proton Beam Therapy - Phase 4
Facade Doors Scope Plans - Level 02

PROJECT	ISSUER	AREA	LEVEL	TYPE	TRADE	SEQUENCE	REV
P4PBT	STW	AFA	02	SOW	A31	191139	B



Legend

- FACADE DOOR
- ME100/D1 EDR-004 DOOR NUMBER DOOR TYPE
- SECURITY RATING: LSP 1175 SR2

Rev. B
Security doors added

1 Facade Doors Scope Plans - Level 03
191140 1 : 200

DRAWING TO SUPPORT THE DISCHARGE OF PLANNING CONDITION 34 AND BREEM HEA 06.2
STW 12/10/2018

NOTES:

ALL REVISIONS						
Rev	DATE	REVISION HISTORY	Dsg	Dw	Chk	App
B	27.09.18	Facade door update	STW	RM	KB	KB
A	07/11/17	FAC - Facade Doors - First Issue	STW	ID	RM	KB



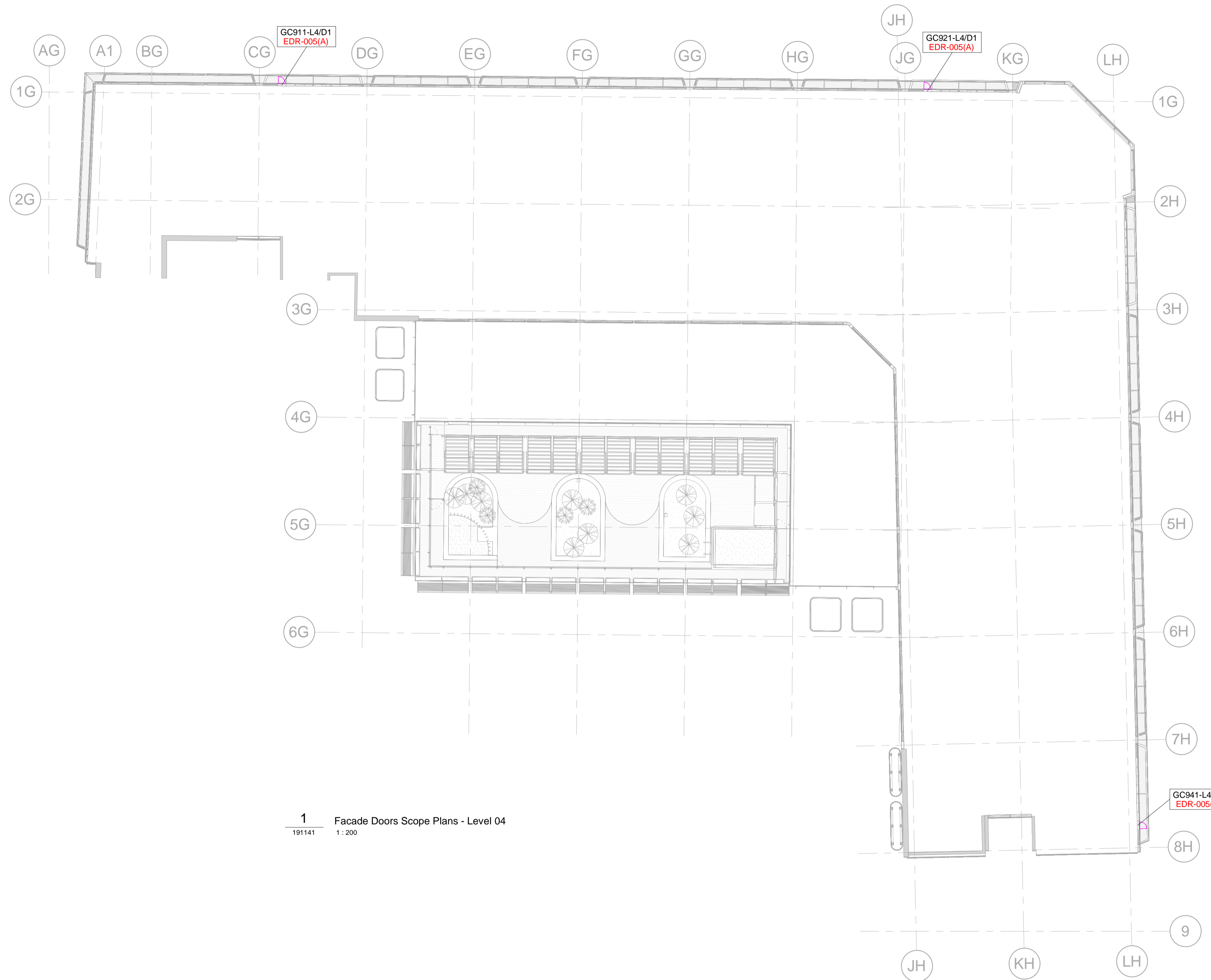
BOUYGUES
UK

Head Office:
Elizabeth House,
39 York Road,
London, SE1 7NO.
Tel:020 7401 0020
Fax:020 7401 0030
www.bouygues-uk.com

University College London Hospitals NHS NHS Foundation Trust		Scott Tallon Walker Architects	
Designed by	STW	Date	2017.11.07
Drawn by	ID	FIRST ISSUE DATE	2017.11.07
Checked	RM	DATE	2017.11.07
Approved	KB	DATE	2017.11.07

ORIGINATOR: @ A1
SCALE: 1 : 200
BIM FILE NAME: P4PBT-STW-AFA-SL-M3-A31-100060
PROPOSED STATUS: S4 - Issued for stage approval

DRAWING TITLE						
Proton Beam Therapy - Phase 4						
Facade Doors Scope Plans - Level 03						
PROJECT	ISSUER	AREA	LEVEL	TYPE	TRADE	SEQUENCE
P4PBT	STW	AFA	03	SOW	A31	191140 B



M FACADE DOOR

ME100/D1 EDR-004 DOOR NUMBER
DOOR TYPE

● SECURITY RATING:
LSP 1175 SR2

Rev. B
Security doors added

1 Facade Doors Scope Plans - Level 04
191141 1:200

**DRAWING TO SUPPORT
THE DISCHARGE OF
PLANNING CONDITION 34
AND BREEM HEA 06.2**

STW 12/10/2018

NOTES:

ALL REVISIONS						
Rev	DATE	REVISION HISTORY	Dsg	Dw	Chk	App
B	27.09.18	Facade door update	STW	RM	KB	KB
A	07/11/17	FAC - Facade Doors - First Issue	STW	ID	RM	KB



Head Office:
Elizabeth House,
39 York Road,
London, SE1 7NO.
Tel:020 7401 0020
Fax:020 7401 0030
www.bouygues-uk.com

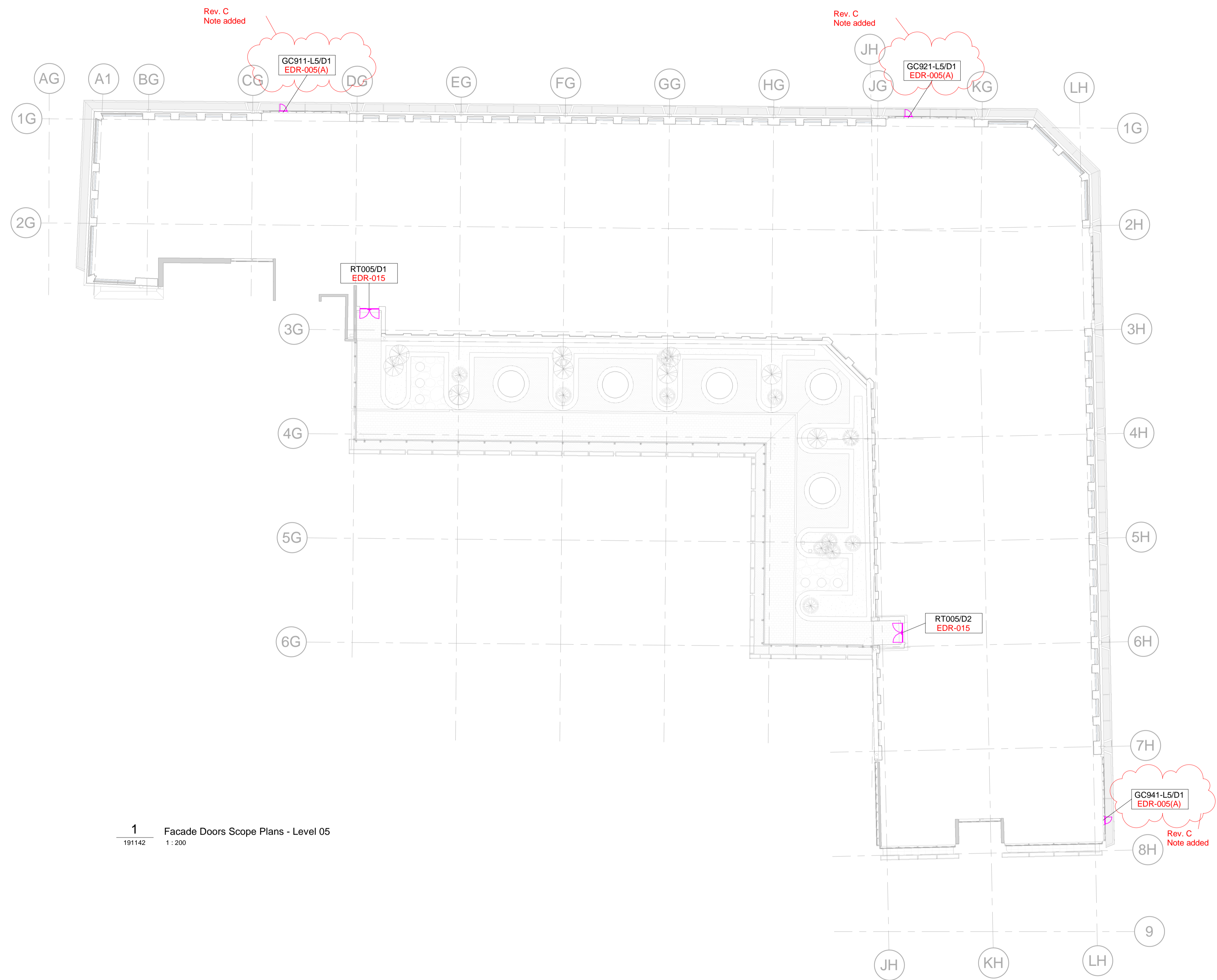
University College London Hospitals NHS NHS Foundation Trust		Scott Tallon Walker Architects	
Designed by	STW	Date	2017.11.07
Drawn by	ID	FIRST ISSUE DATE	2017.11.07
Checked	RM	DATE	2017.11.07
Approved	KB	DATE	2017.11.07

ORIGINATOR: @ A1 BIM FILE NAME: P4PBT-STW-AFA-SL-M3-A31-100060

SCALE: 1:200

PROPOSED STATUS: S4 - Issued for stage approval

DRAWING TITLE							
Proton Beam Therapy - Phase 4							
Facade Doors Scope Plans - Level 04							
PROJECT	ISSUER	AREA	LEVEL	TYPE	TRADE	SEQUENCE	REV
P4PBT	STW	AFA	04	SOW	A31	191141	B



1 Facade Doors Scope Plans - Level 05
191142 1:200

**DRAWING TO SUPPORT
THE DISCHARGE OF
PLANNING CONDITION 34
AND BREEM HEA 06.2**

STW 12/10/2018

NOTES:

ALL REVISIONS		Dsg	Dw	Chk	App	
C	18.10.18	ByUK comments updated	STW	RM	KB	KB
B	27.09.18	Facade door update	STW	RM	KB	KB
A	07/11/17	FAC - Facade Doors - First Issue	STW	ID	RM	KB
Rev	DATE	REVISION HISTORY				



BOUYGUES
UK

Head Office:
Elizabeth House,
39 York Road,
London, SE1 7NQ.
Tel:020 7401 0020
Fax:020 7401 0030
www.bouygues-uk.com

University College London Hospitals **NHS** NHS Foundation Trust

Name	Signature	Date
Designed by	STW	2017.11.07
Drawn by	ID	2017.11.07
Checked	RM	2017.11.07
Approved	KB	2017.11.07

ORIGINATOR: Scott Tallon Walker Architects

SCALE: 1:200 @ A1


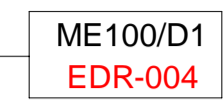

BIM FILE NAME: P4PBT-STW-AFA-SL-M3-A31-100060

FIRST ISSUE DATE: 2017.11.07

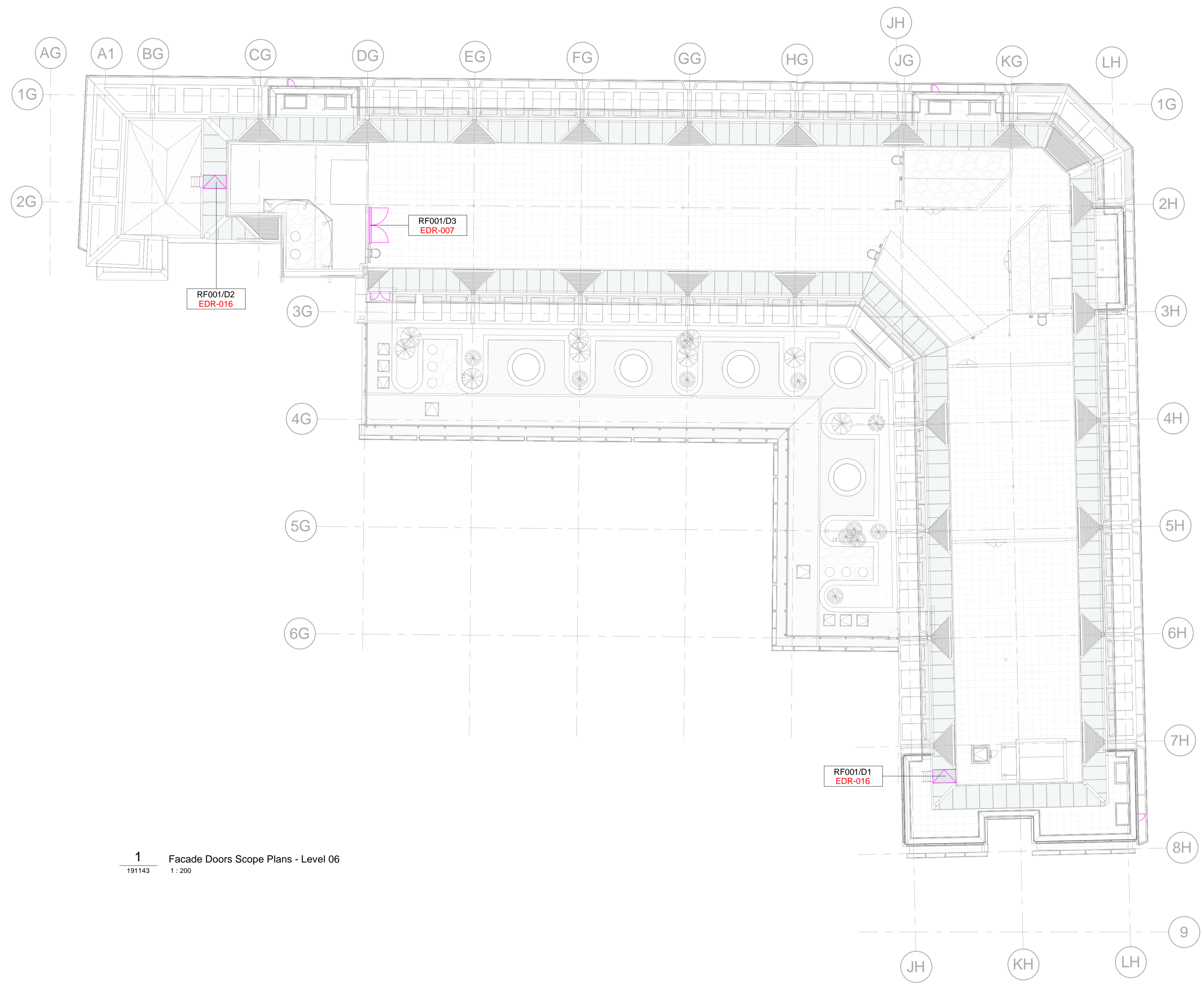
PROPOSED STATUS: S4 - Issued for stage approval

DRAWING TITLE: Proton Beam Therapy - Phase 4
Facade Doors Scope Plans - Level 05

PROJECT	ISSUER	AREA	LEVEL	TYPE	TRADE	SEQUENCE	REV
P4PBT	STW	AFA	05	SOW	A31	191142	C

 FACADE DOOR
 DOOR NUMBER
 DOOR TYPE
 SECURITY RATING:
 LSP 1175 SR2

Rev. B
Security doors added



1 Facade Doors Scope Plans - Level 06
191143 1 : 200

**DRAWING TO SUPPORT
THE DISCHARGE OF
PLANNING CONDITION 34
AND BREEM HEA 06.2**

STW 12/10/2018

NOTES:

ALL REVISIONS		REVISION HISTORY	
Rev	DATE	Dsg	App
B	27.09.18	STW	RM
A	07/11/17	STW	RM

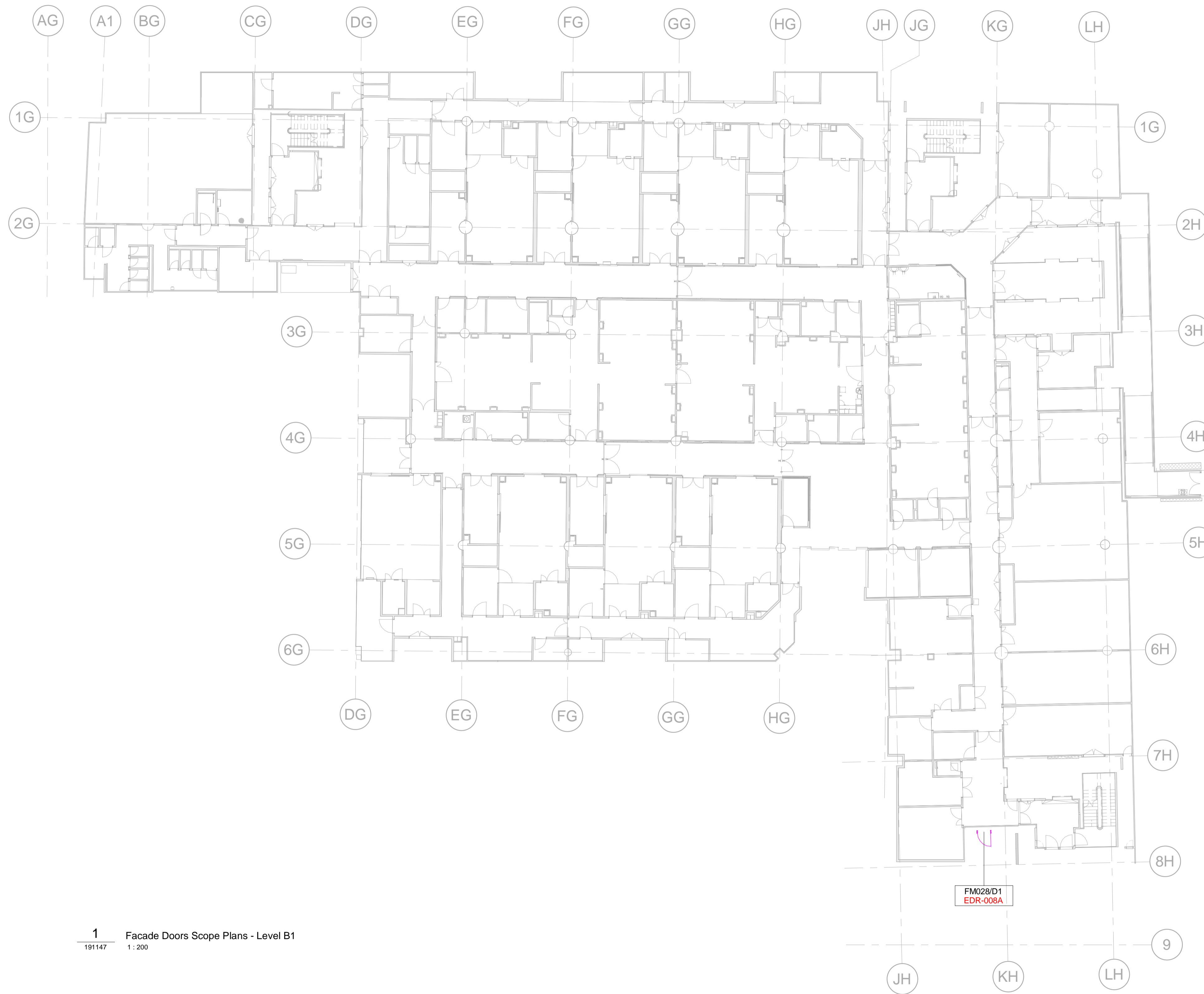


Head Office:
Elizabeth House,
39 York Road,
London, SE1 7NO.
Tel: 020 7401 0020
Fax: 020 7401 0030
www.bouygues-uk.com

Designed by	Name	Signature	Date
Drawn by	STW		2017.11.07
Checked	ID		2017.11.07
Approved	RM		2017.11.07
	KB		2017.11.07

ORIGINATOR	UNIVERSITY COLLEGE LONDON HOSPITALS NHS FOUNDATION TRUST	SCOTT TALLON WALKER ARCHITECTS
SCALE	1 : 200	BIM FILE NAME
DATE	2017.11.07	P4PBT-STW-AFA-SL-M3-A31-100060
PROPOSED STATUS	S4 - Issued for stage approval	

DRAWING TITLE							
Proton Beam Therapy - Phase 4							
Facade Doors Scope Plans - Level 06							
PROJECT	ISSUER	AREA	LEVEL	TYPE	TRADE	SEQUENCE	REV
P4PBT	STW	AFA	06	SOW	A31	191143	B



M FACADE DOOR

ME100/D1 DOOR NUMBER
EDR-004 DOOR TYPE

● SECURITY RATING:
LSP 1175 SR2

Rev. B
Security doors added

1 Facade Doors Scope Plans - Level B1
191147 1:200

**DRAWING TO SUPPORT
THE DISCHARGE OF
PLANNING CONDITION 34
AND BREAM HEA 06.2**

STW 12/10/2018

NOTES:

Rev	DATE	REVISION HISTORY	Dsg	Dw	Chk	App
B	27.09.18	Facade door update	STW	RM	KB	KB
A	07/11/17	FAC - Facade Doors - First Issue	STW	ID	RM	KB



BOUYGUES
UK

Head Office:
Elizabeth House,
39 York Road,
London, SE1 7NO.
Tel: 020 7401 0020
Fax: 020 7401 0030
www.bouygues-uk.com

University College London Hospitals **NHS** NHS Foundation Trust

Name	Signature	Date
Designed by: STW		2017.11.07
Drawn by: ID		2017.11.07
Checked: RM		2017.11.07
Approved: KB		2017.11.07

ORIGINATOR: Scott Tallon Walker Architects

SCALE: 1:200 @ A1

BIM FILE NAME: P4PBT-STW-AFA-SL-M3-A31-100060

PROPOSED STATUS: S4 - Issued for stage approval

DRAWING TITLE: Proton Beam Therapy - Phase 4
Facade Doors Scope Plans - Level B1

PROJECT	ISSUER	AREA	LEVEL	TYPE	TRADE	SEQUENCE	REV
P4PBT	STW	AFA	B1	SOW	A31	191147	B