

1 111131-Sixth Floor Level  
1:200

**TOTAL NUMBER OF WASTE CONTAINERS / DIRTY LINEN CAGES AT LVL6:**  
 0 x BIN038, 1100LTR WHEELIE BIN (GENERAL & RECYCLE WASTE)  
 0 x BIN037, 770LTR WHEELIE BIN (CLINICAL WASTE (OFFENSIVE & INFECTIOUS CLINICAL WASTE))  
 0 x RAC908, METAL LINEN CAGE ON CASTORS

**LOCATION OF DISPOSAL HOLDS PER FLOOR TO SUPPORT PLANNING CONDITION 8 DISCHARGE**  
 STW - 12/11/2018

NOTES:  
 Clouds indicate changes made since the 1:200 GA issue dated 06.06.2016

Rev	DATE	REVISION HISTORY	Dsg	Drw	Chk	App
G	2017.03.03	GEN Set of Drawings / Issued for Approval	STW	RG	KK	KB
F	2017.01.27	GEN Set Of Drawings / Issued For Approval	STW	KK	KK	KB
E	2016.10.07	Issued for Acceptance	STW	MDM	KK	KB
D	2016.07.06	Issued for Facade Tender	STW	MDM	KK	KB
C	2016.06.03	Updated to incorporate comments received under PM2016 and EWN016 as per MoM of 05/05/2016 Issued For Acceptance	STW	MDM	KK	KB
B	2016.02.20	Issued for Approval	STW	STW	STW	STW



**BOUYGUES**  
 Head Office:  
 Elizabeth House,  
 39 York Road,  
 London, SE1 7NG,  
 Tel: 020 7401 0020  
 Fax: 020 7401 0030  
 www.bouygues-uk.com

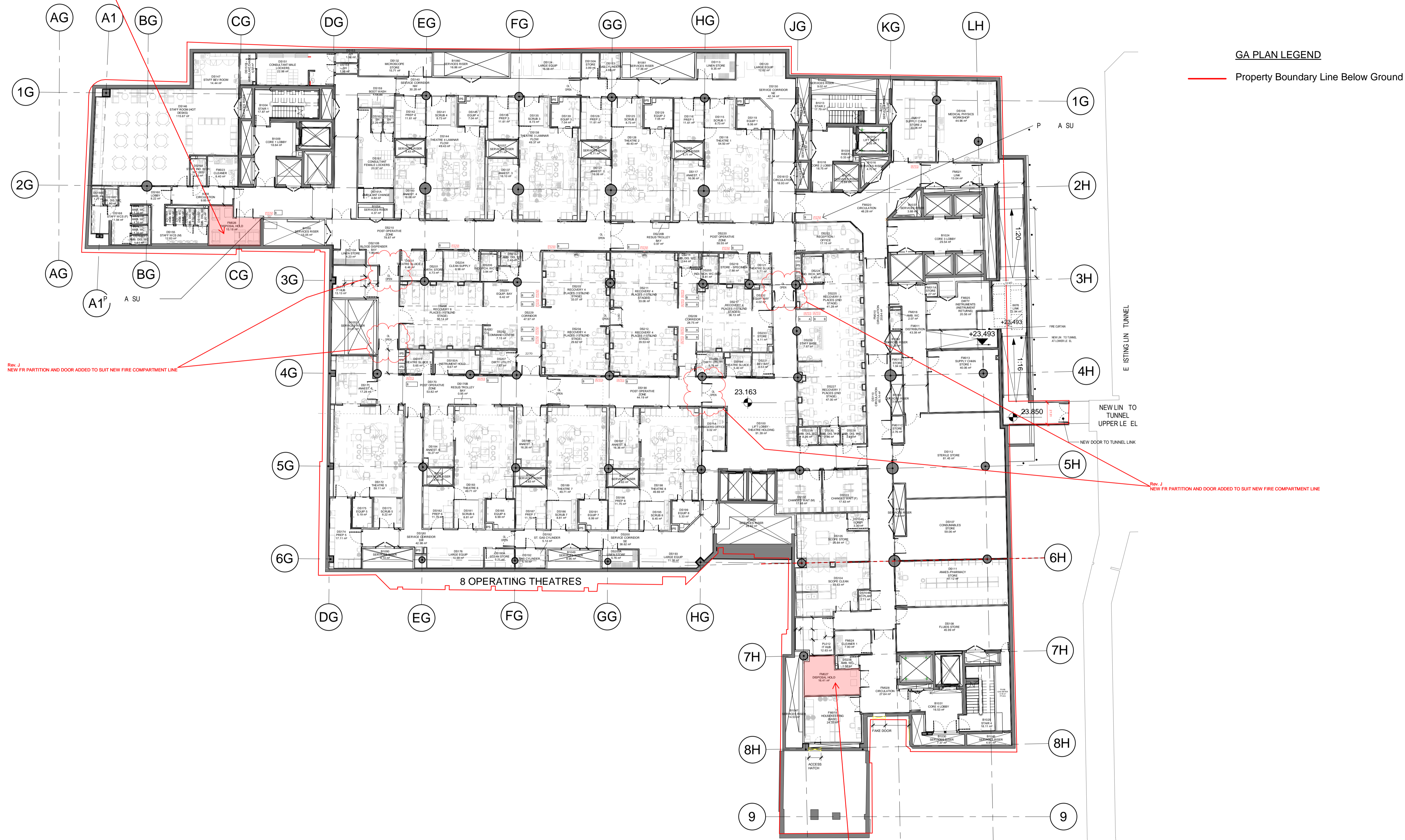
University College London Hospitals **NHS** Foundation Trust

Name	Signature	Date
Designed by	STW	2017.03.03
Drawn by	KK	2017.03.03
Checked	KK	2017.03.03
Approved	KB	2017.03.03

ORIGINATOR  
 SCALE 1:200 @ A1  
 BIM FILE NAME P4PBT-STW-AAB-SL-M3-A31-100054  
 FIRST ISSUE DATE 2016.02.16  
 PROPOSED STATUS S2 - FOR INFORMATION

DRAWING TITLE									
Proton Beam Therapy - Phase 4									
General Arrangement Plans Sixth Floor Level									
PROJECT	ISSUER	AREA	LEVEL	TYPE	TRADE	SEQUENCE	REV		
P4PBT	STW	AAB	06	CA	A31	111131	G		

**LVLB1, CORE1: DISPOSAL HOLD FM026, 15.2sqm**  
 2 x BIN038, 1100LTR WHEELIE BIN (GENERAL & RECYCLE WASTE), H=1470mm, W=1370mm, D=1115mm  
 2 x BIN037, 770LTR WHEELIE BIN (OFFENSIVE & INFECTIOUS CLINICAL WASTE), H=1360mm, W=1360mm, D=800mm  
 1 x RAC908, METAL LINEN CAGE ON CASTORS, H=1495mm, W=1000mm, D=500mm



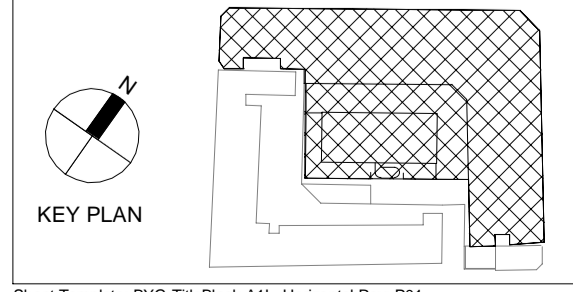
**GA PLAN LEGEND**  
 — Property Boundary Line Below Ground

1  
 111061  
 Basement Level B1  
 1:200

**TOTAL NUMBER OF WASTE CONTAINERS / DIRTY LINEN CAGES AT LVLB1:**  
 4 x BIN038, 1100LTR WHEELIE BIN (GENERAL & RECYCLE WASTE)  
 4 x BIN037, 770LTR WHEELIE BIN (OFFENSIVE & INFECTIOUS CLINICAL WASTE)  
 2 x RAC908, METAL LINEN CAGES

**LVLB1, CORE4: DISPOSAL HOLD FM027, 16.88sqm**  
 2 x BIN038, 1100LTR WHEELIE BIN (GENERAL & RECYCLE WASTE), H=1470mm, W=1370mm, D=1115mm  
 2 x BIN037, 770LTR WHEELIE BIN (OFFENSIVE & INFECTIOUS CLINICAL WASTE), H=1360mm, W=1360mm, D=800mm  
 1 x RAC908, METAL LINEN CAGE ON CASTORS, H=1495mm, W=1000mm, D=500mm

**LOCATION OF DISPOSAL HOLDS PER FLOOR TO SUPPORT PLANNING CONDITION 8 DISCHARGE**  
 STW - 12/11/2018



LINKED MODEL SCHEDULE

RTL	F	N	R
P	PBT	CRE	CRG
P	PBT	CRE	SAB
P	PBT	CRE	SBG
P	PBT	CRE	IE
P	PBT	ISS	ALL

The position in relation to ownership of land in public pavement areas as defined by e.g. pavement lights & vaults TBC by Capsticks

REVISION	DATE	DESCRIPTION	DRW	CHK	APP
J	2018.08.02	Four no. new doors added to suit new fire compartment line / S3 - Issued for Review and Comment	ID	ID	KB
I	2018.06.27	GEN SET OF DRAWINGS/STAGE 4/S3 Issue for Review and Comment	RV	PG	KB
II	2017.08.14	S4 - Issued for Approval	AO	KK	KB
H	2017.03.03	GEN Set of Drawings / Issued For Approval	MDM	PG	KB
G	2017.01.27	GEN Set Of Drawings / Issued For Approval	MDM	PG	KB
F	2016.10.07	Issued for Acceptance	MDM	PG	KB

University College London Hospitals **Scott Tallon Walker Architects**

Main Contractor - Bouygues UK  
 Beckett House  
 1 Lambeth Palace Rd  
 Lambeth, London SE1 7EU  
 Tel: 020 7401 0020

ORIGINATOR  
**Scott Tallon Walker Architects**

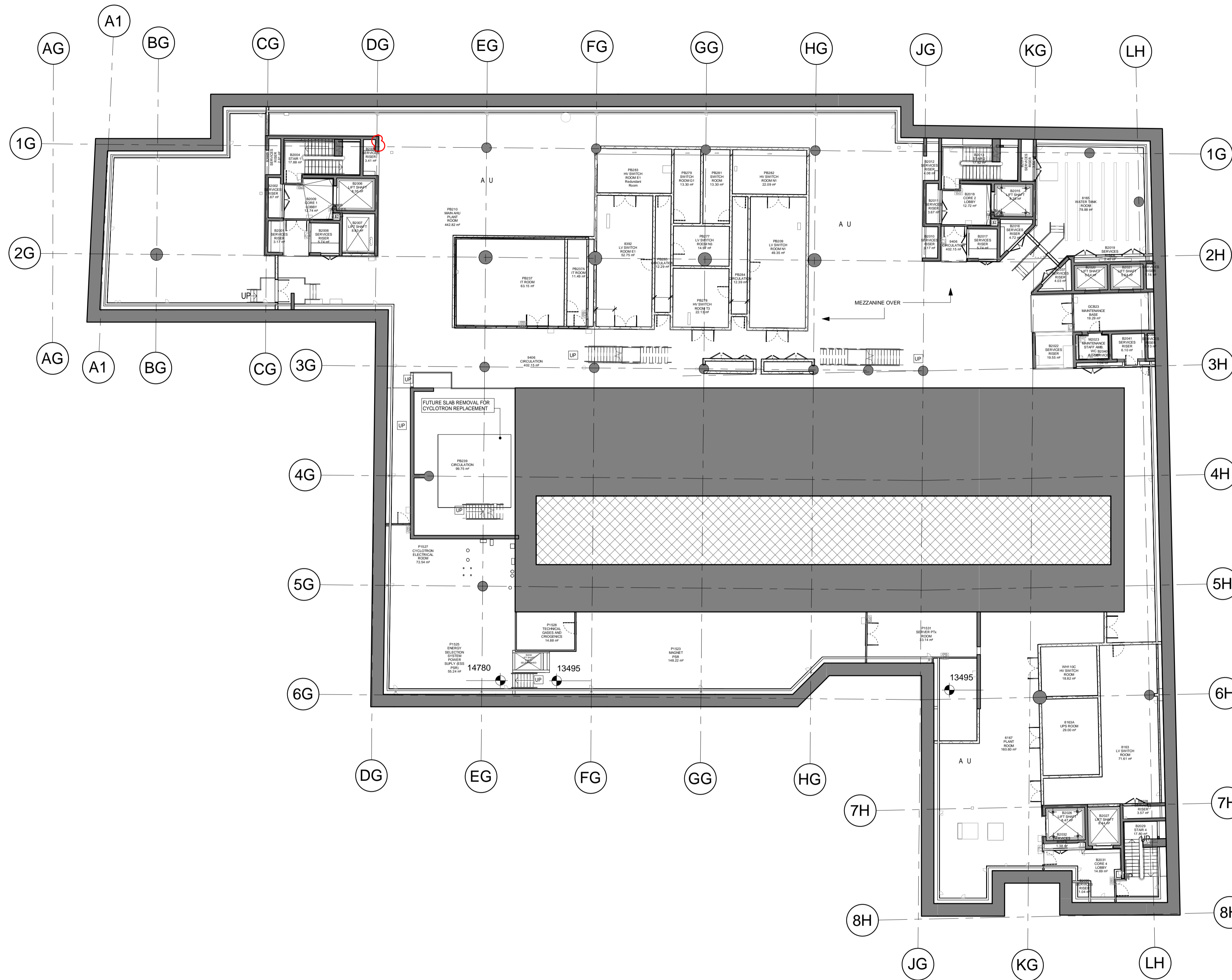
SCALE @ A1  
 1 : 200

FIRST ISSUE DATE  
 2016.02.16

PROPOSED STATUS  
 S3 - Issued for Review and Comment

DRAWING TITLE  
**Proton Beam Therapy - Phase 4**  
**General Arrangement Plans Basement 1**

PROJECT	ISSUER	AREA	LEVEL	TYPE	TRADE	SEQUENCE	REVISION
P4PBT	STW	AAB	B1	GA	A31	111061	J



**TOTAL NUMBER OF WASTE CONTAINERS / DIRTY LINEN CAGES AT LVLB2:**  
 0 x BIN038, 1100LTR WHEELIE BIN (GENERAL & RECYCLE WASTE)  
 0 x BIN037, 770LTR WHEELIE BIN (OFFENSIVE & INFECTIOUS CLINICAL WASTE)  
 0 x RAC908, METAL LINEN CAGE ON CASTORS

1 111041-Basement Level B2  
 111041 1:200

**LOCATION OF DISPOSAL HOLDS PER FLOOR  
 TO SUPPORT PLANNING CONDITION 8 DISCHARGE**  
 STW - 12/11/2018

KEY PLAN

LINKED MODEL SCHEDULE

R	T	L	F	N	R
P	PBT	CRE	SBS	SLM	A
P	PBT	STW	ALL	SLM	A

REVISION	DATE	DESCRIPTION	DRW	CHK	APP
H	2018.06.15	GEN set of drawings/Stage 4/S3 Issued for Review and Comment	KO	RV	KB
G	2017.09.07	GEN SET OF DRAWINGS/STAGE F/S2 FOR INFORMATION	AO	AO	KB
F	2017.03.03	GEN Set of Drawings / Issued for Approval	KK	KK	KB
E	2017.01.27	GEN set of drawings / Issued for Acceptance	MDM	KK	KB
D	2016.10.07	Issued for Acceptance	MDM	KK	KB
C	2016.08.03	S1-Issued For Coordination Rooms to be provided by BDCT for PTE	MDM	KK	KB

UNIVERSITY COLLEGE LONDON HOSPITALS **Scott Tallon Walker Architects**

ORIGINATOR: Scott Tallon Walker Architects  
 SCALE @ A1: 1:200  
 FIRST ISSUE DATE: 2015.06.09  
 PROPOSED STATUS: S3 - Issued for review and comment

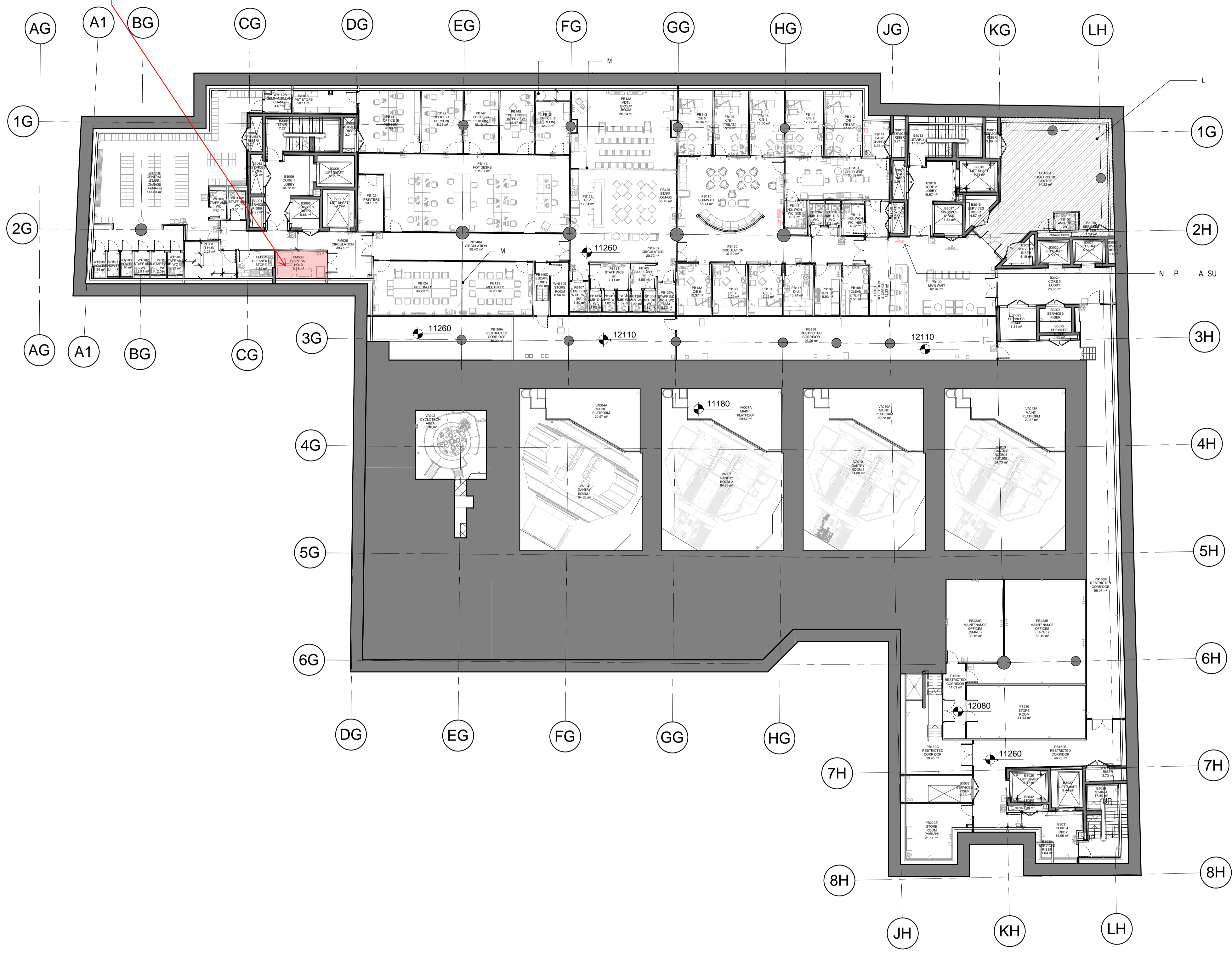
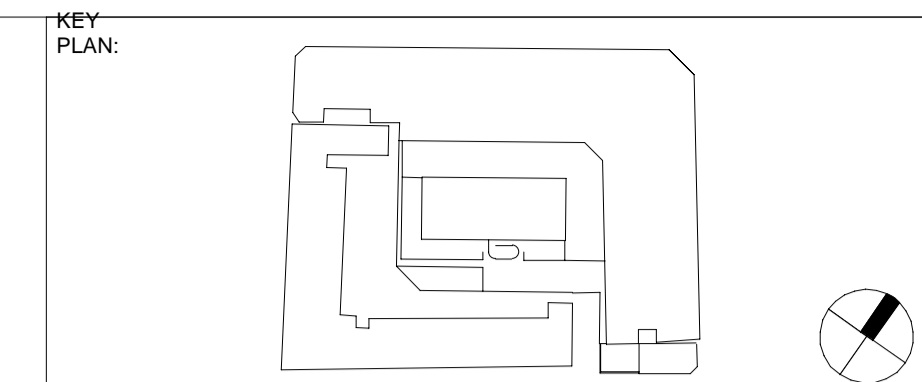
Main Contractor - Bouygues UK  
 Beckett House  
 1 Lambeth Palace Rd  
 Lambeth, London SE1 7EU  
 Tel: 020 7401 0020

DRAWING TITLE: Proton Beam Therapy - Phase 4  
 General Arrangement Plans Basement B2

PROJECT	ISSUER	AREA	LEVEL	TYPE	TRADE	SEQUENCE	REVISION
P4PBT	STW	ABG	B2	CA	A31	111041	H

Sheet Template: BYG-TitleBlock-ATL\_Horizontal Rev. P01

**LVLB3, CORE1: DISPOSAL HOLD FM033, 9.5sqm**  
 2 x BIN038, 1100LTR WHEELIE BIN (GENERAL & RECYCLE WASTE), H=1470mm, W=1370mm, D=1115mm  
 1 x BIN037, 770LTR WHEELIE BIN (CLINICAL WASTE (OFFENSIVE OR INFECTIOUS TBC BY TRUST)), H=1360mm, W=1360mm, D=800mm  
 1 x RAC908, METAL LINEN CAGE ON CASTORS, H=1495mm, W=1000mm, D=500mm



**TOTAL NUMBER OF WASTE CONTAINERS / DIRTY LINEN CAGES AT LVLB3:**  
 2 x BIN038, 1100LTR WHEELIE BIN (GENERAL & RECYCLE WASTE)  
 1 x BIN037, 770LTR WHEELIE BIN (CLINICAL WASTE (OFFENSIVE OR INFECTIOUS TBC BY TRUST))  
 1 x RAC908, METAL LINEN CAGE ON CASTORS

1  
111031

**LOCATION OF DISPOSAL HOLDS PER FLOOR TO SUPPORT PLANNING CONDITION 8 DISCHARGE**

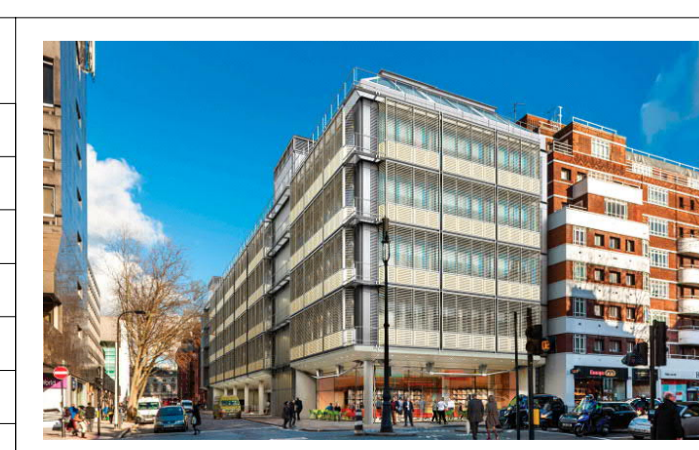
STW - 12/11/2018

NOTES:

R	T	L	F	N	R	
P	PBT	CCR	ALL	SL	RBW	A
P	PBT	CRE	SAB	SL	M	A
P	PBT	CRE	SRG	SL	M	A
P	PBT	AR	MBG	SL	M	A
P	PBT	AR	MBG	SL	M	A
P	PBT	AR	MBG	SL	M	A
P	PBT	AR	MBG	SL	M	A
P	PBT	AR	MBG	SL	M	A
P	PBT	AR	MBG	SL	M	A
P	PBT	AR	MBG	SL	M	A
P	PBT	AR	MBG	SL	M	A
P	PBT	AR	MBG	SL	M	A
P	PBT	AR	MBG	SL	M	A

ALL REVISIONS

Rev	DATE	REVISION HISTORY	Dsg	Drw	Chk	App
I	2018.06.04	GEN set of drawings/Stage 4/S3 Issued for Review and Comment	STW	KO	KK	KB
H	2017.09.07	GEN SET OF DRAWINGS/STAGE F/S2 FOR INFORMATION	STW	AO	KK	KB
H	2017.03.03	GEN Set of Drawings / Issued for Approval	STW	RG	KK	KB
G	2017.01.27	GEN set of drawings / Issued for Acceptance	STW	KK	PS	KB
F	2016.10.07	Issued for Acceptance	STW	MDM	PS	KB
E	2016.08.03	S1-Issued For Coordination Rooms to be provided by BDCT for PTE	STW	MDM	PS	KB



**BOUYGUES**

Head Office:  
 Elizabeth House,  
 39 York Road,  
 London, SE1 7NQ,  
 Tel: 020 7401 0020  
 Fax: 020 7401 0030  
 www.bouygues-uk.com

University College London Hospitals NHS Foundation Trust

Name	Signature	Date
Designed by	STW	2018.06.04
Drawn by	AO	2018.06.04
Checked	KK	2018.06.04
Approved	KB	2018.06.04

ORIGINATOR

University College London Hospitals NHS Foundation Trust

Scott Tallon Walker Architects

SCALE: 1 : 200 @ A1

BIM FILE NAME: P4PBT-STW-ABG-SL-M3-A31-100030 - Rev P04

PROPOSED STATUS: S3 - Issued for Review and Comment

DRAWING TITLE

Proton Beam Therapy - Phase 4

General Arrangement Plans Basement B3

PROJECT	ISSUER	AREA	LEVEL	TYPE	TRADE	SEQUENCE	REV
P4PBT	STW	ABG	B3	CA	A31	111031	I