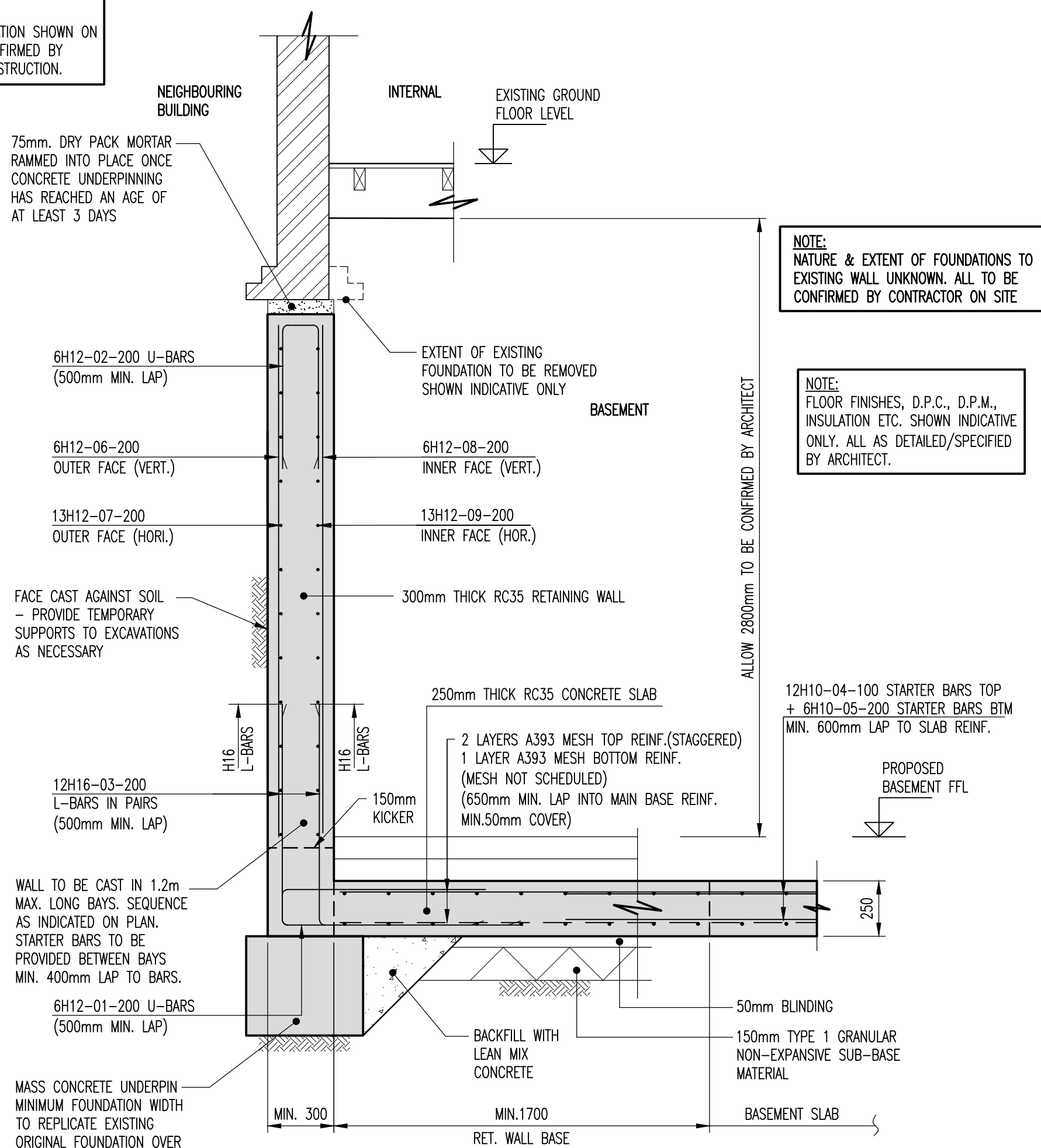
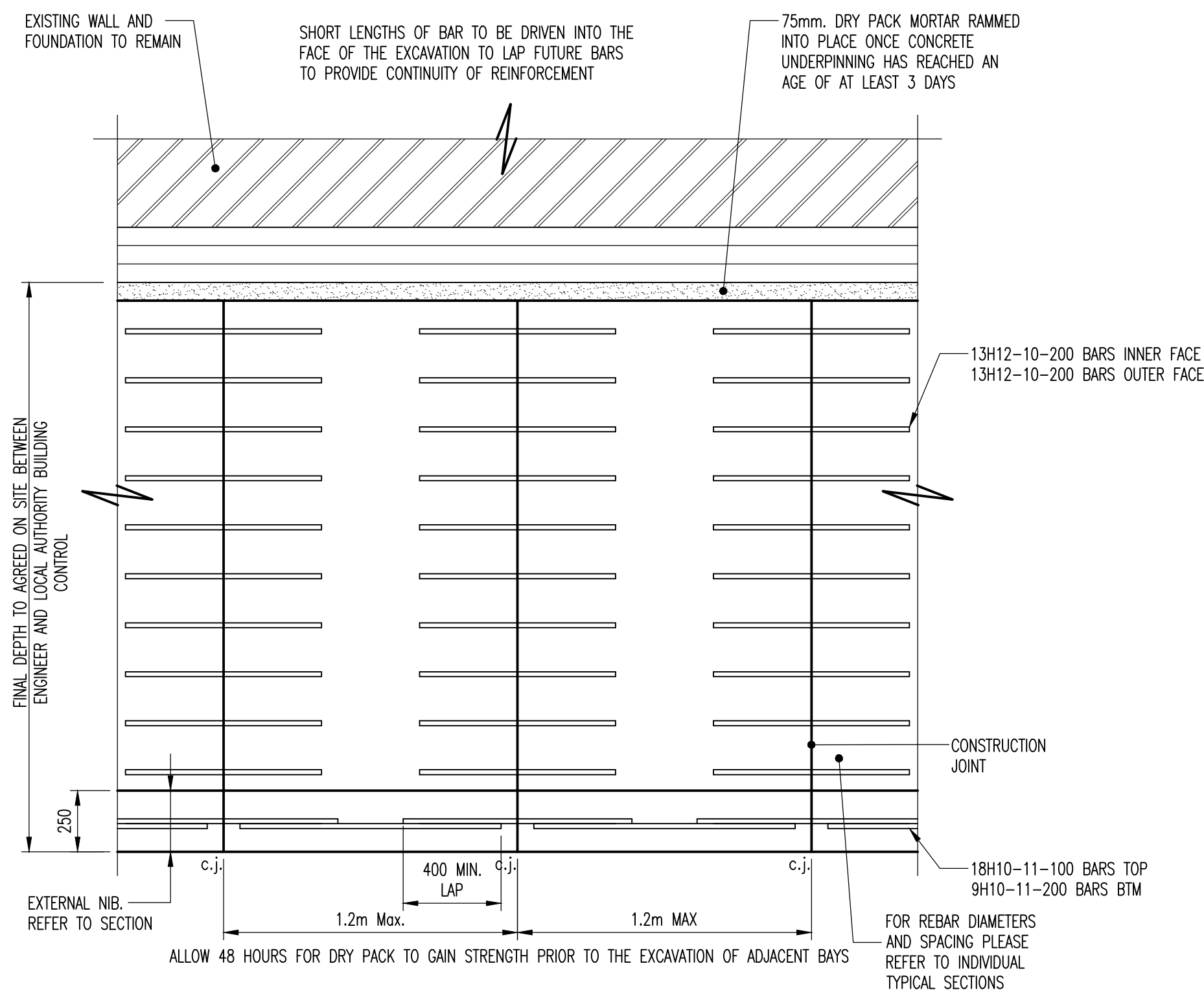


NOTE:
ALL SETTING OUT INFORMATION SHOWN ON THIS DRAWING TO BE CONFIRMED BY ARCHITECT PRIOR TO CONSTRUCTION.



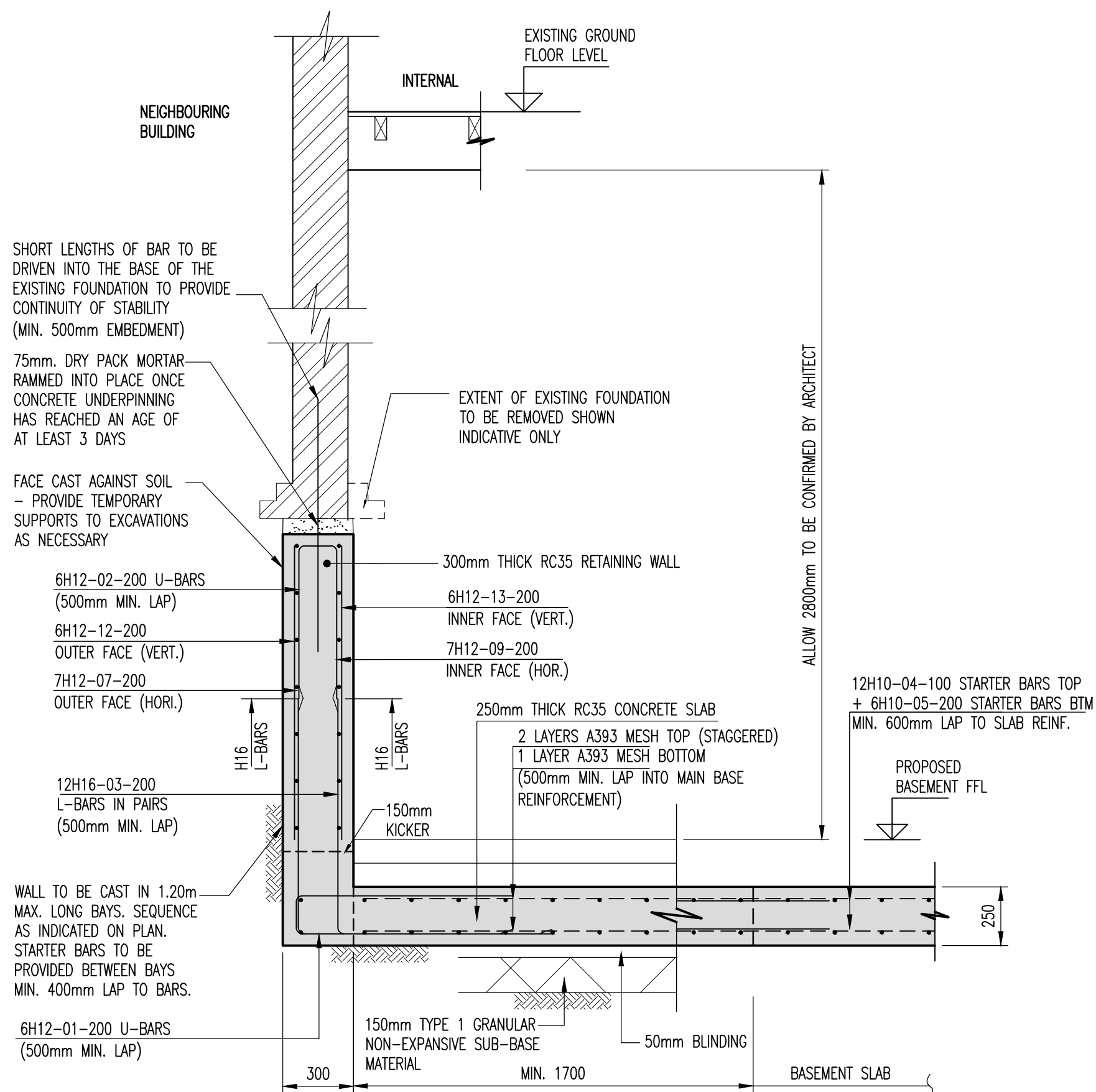
TYPICAL SECTION A-A THROUGH BASEMENT WALL- TYPE 1
NEW BASEMENT UNDERPINNING BENEATH EXISTING HOUSE

SCALE 1:20



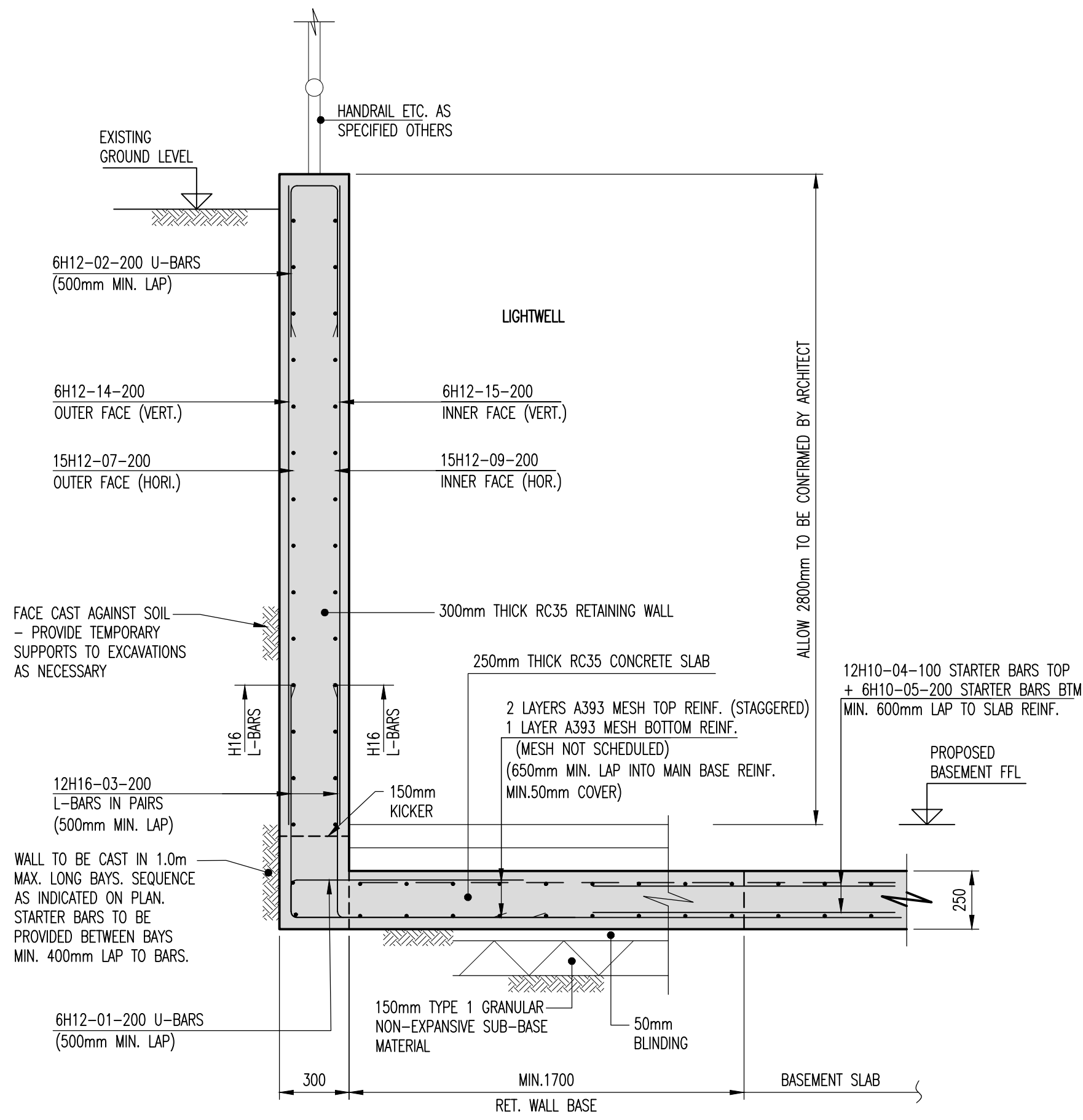
TYPICAL ELEVATION ON UNDERPINNING/RETAINING WALL STEM

SCALE 1:20



TYPICAL SECTION B-B THROUGH BASEMENT WALL-TYPE 2
EXISTING BASEMENT UNDERPINNING

SCALE 1:20

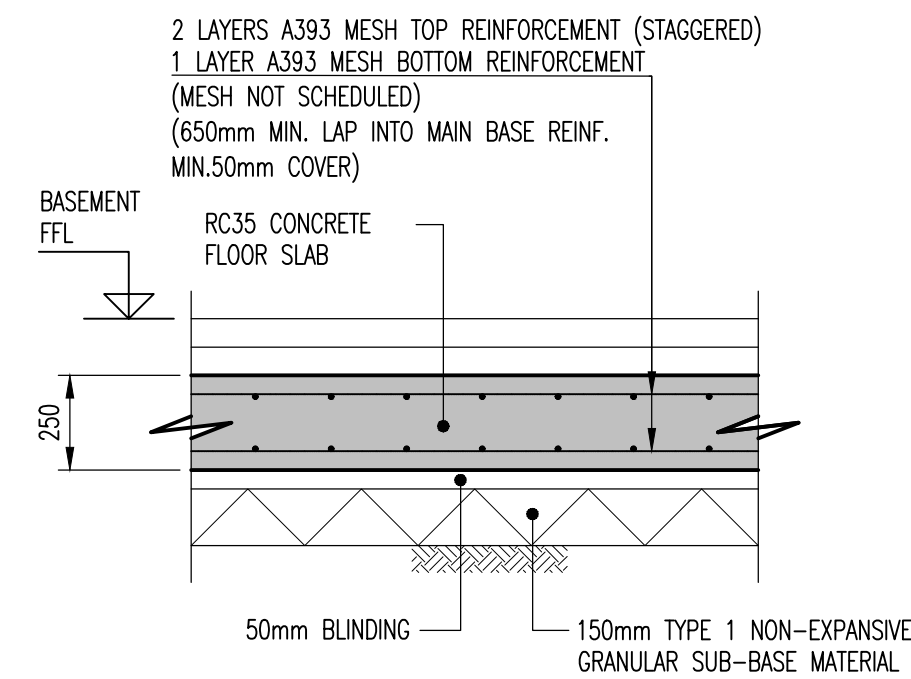


TYPICAL SECTION C-C THROUGH BASEMENT WALL - TYPE 3
LIGHTWELL

SCALE 1:20

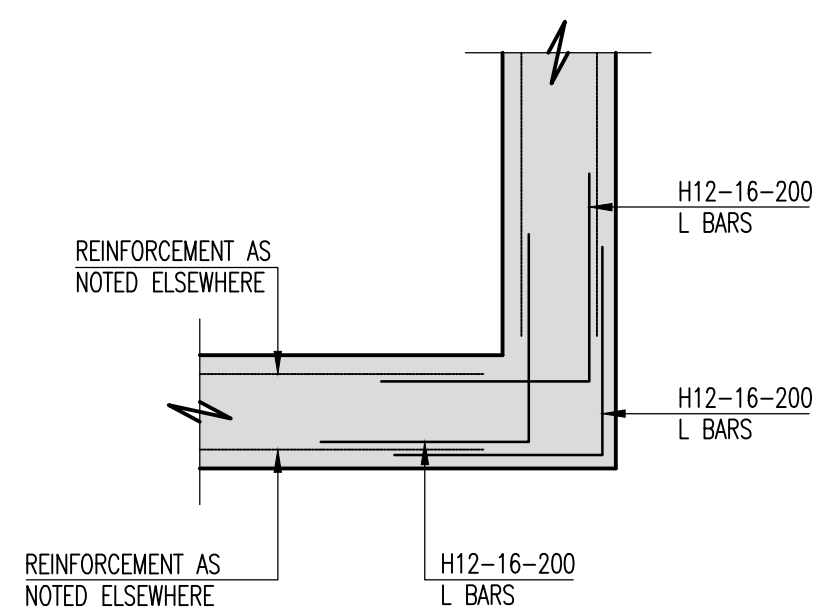
NOTE:
FOR BBS REFER TO JMS BBS SHEET
501-01-02.

NOTE:
REINFORCEMENT SHOWN IN SECTIONS OF
UNDERPINNING SEQUENCE IS PER BAY.



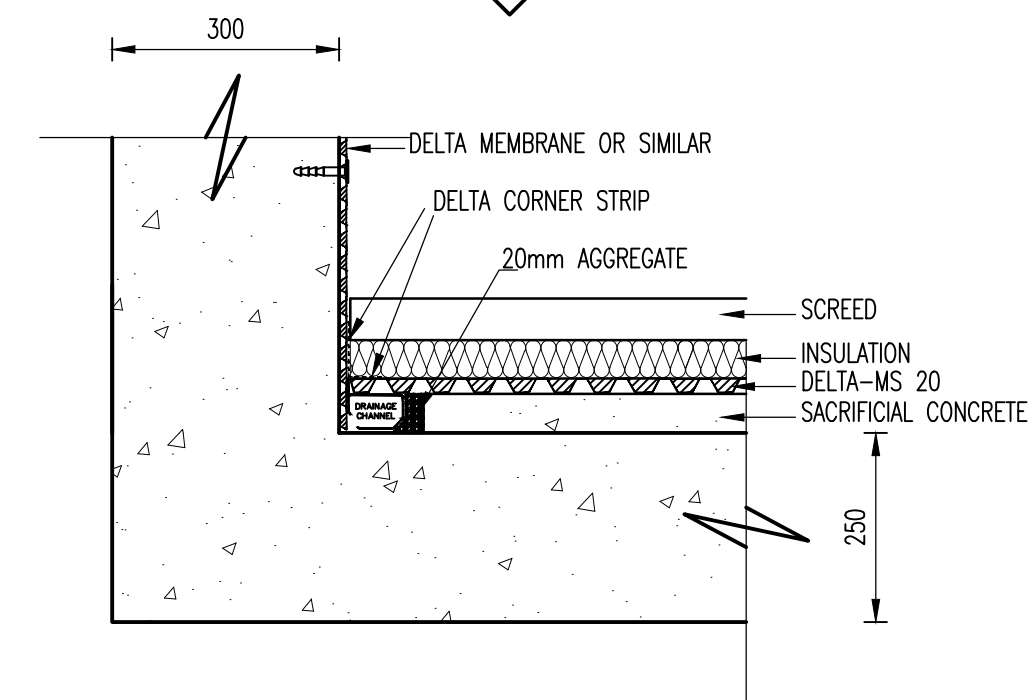
TYPICAL SECTION THROUGH BASEMENT FLOOR SLAB

SCALE 1:20



RETAINING WALL - TYPICAL CORNER DETAIL

SCALE 1:20



PERIMETER WATERPROOFING DETAIL

SCALE 1:10

NOTES

1. DO NOT SCALE THIS DRAWING. ALL DIMENSIONS ARE IN MILLIMETRES UNLESS NOTED OTHERWISE. ANY DISCREPANCIES ARE TO BE RECORDED AND REPORTED TO THE ENGINEERS IMMEDIATELY.

2. THIS DRAWING IS TO BE READ IN CONJUNCTION WITH ALL OTHER ENGINEERS AND ARCHITECTS DRAWINGS AND THE SPECIFICATION.

3. ALL WORKMANSHIP & MATERIALS ARE TO BE IN ACCORDANCE WITH CURRENT BRITISH & EUROPEAN STANDARDS & CODES OF PRACTICE. ALL WORK IS TO BE TO THE SATISFACTION OF THE ENGINEER AND LOCAL AUTHORITY BUILDING CONTROL.

4. COVER TO REINFORCEMENT TO BE:
BEAMS & SLABS
- TOP = 40 mm
- BOTTOM = 50 mm
- SIDES = 50 mm

5. REINFORCED CONCRETE TO BE DESIGN STRENGTH RC35 IN ACCORDANCE WITH THE REQUIREMENTS OF BS 8500 USING 20mm NOMINAL SIZED AGGREGATE, DESIGN SULPHATE CLASS DS-3 & ACEC AC-3 UNLESS NOTED OTHERWISE IN JMS CONCRETE SPECIFICATION.

6. REINFORCING BARS ARE TO BE TO BS 4449: 2005, BS 4483: 2005 AND BS 8666: 2005 AS APPLICABLE.

7. MINIMUM LAP TO REINFORCING BARS TO BE 40 x THE BAR DIAMETER.

8. MINIMUM LAP TO MESH REINFORCEMENT TO BE 600mm.

9. ALL REINFORCING BARS ARE TO BE SECURELY WIRED TOGETHER & LOCATED WITH SUITABLY FIXED STOOLS, SPACERS, COVER BLOCKS ETC. THESE ITEMS ARE NOT SCHEDULED.

10. THE CONTRACTOR IS RESPONSIBLE FOR THE DESIGN, SUPPORT AND ERECTION OF ANY SHUTTERING/FORMWORK REQUIRED AND MUST TAKE ALL NECESSARY PRECAUTIONS TO ENSURE THE STABILITY OF THE WORKS DURING CONSTRUCTION.

11. ALL SERVICES ARE TO BE LOCATED AND PROTECTED AS NECESSARY BY THE CONTRACTOR PRIOR TO THE COMMENCEMENT OF WORKS.

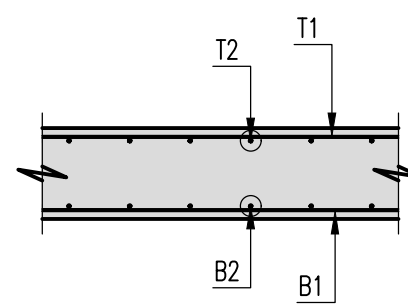
12. ANY EXISTING DETAILS WHICH ARE SHOWN ON THIS DRAWING ARE FOR GUIDANCE ONLY AND ARE TO BE RECORDED AND REPORTED TO THE ENGINEER IMMEDIATELY.

LEGEND

EF : EACH FACE
NF : NEAR FACE
FF : FAR FACE
LINKS : LINKS
UB : U-BARS
ADD'L : ADDITIONAL BAR
T+B : TOP & BOTTOM
ALT. : ALTERNATIVE
STG. : STAGGERED

ANNOTATION OF LAYERS TYPICAL REBAR CALL UP

2 X 10 H10 01-150
SPACING OF BAR
BAR MARK REINFORCEMENT
DIAMETER OF BAR
GRADE OF STEEL
QUANTITY OF BAR
MULTIPLES



PRELIMINARY

Rev	Revised	Issue	Amendments	Drawn	Approved	Date
P1	INITIAL	ISSUE		HP	DJS	13.08.2018

jms CIVIL & STRUCTURAL CONSULTING ENGINEERS
LONDON • MIDLANDS • EAST ANGLIA • MANCHESTER • GREECE
Visit our website: www.jmsengineers.co.uk Or scan QR code

Document was issued from
JMS East Anglia Tel: 01473 487250
Unit 10 Brightwell Barns, Walsingham Road, Suffolk (IP10 0B)

Other offices include:
JMS London Tel: 0207 043 4619
JMS Midlands Tel: 02476 350505
JMS Manchester Tel: 0161 7904004
JMS Greece Tel: 0030 2310 960636
JMS Chelmsford Tel: 01245 905886



Project
74 FORTUNE GREEN ROAD
NW6 1DS

Drawing Title
TYPICAL RETAINING WALL SECTIONS

Client
ENTIRE HOUSE Ltd

Drawn by
KP

Designed by
KP

Approved by
DJS

Checked by
DJS

Scale
AS SHOWN @ A1

Date
AUGUST 2018

Drawing No.
EX18_132_07 / 501

Rev.
P2