



WILLIAM ROAD

**KEY**

--- Consented Scheme boundary

REV	DATE	ISSUED FOR
-	13/11/18	Issued for Information

**PROJECT-WIDE NOTES**

The elements of the existing building are shown indicatively only. This is represented on the Design Drawings and in the Specification.

The Contractor shall satisfy himself the As-Built condition is accurately works and the existing building for Architects review and comment.

The Contractor shall provide details of the interfaces between the new Engineers drawings.

All visual steel work connections are indicative. Please refer to Structure requirements and submit drawings for review by the Architect, indicative. Contractor to develop details to meet visual/performance

All supporting structures, fixings, seals and waterproofing arrangements are Design drawings and documentation

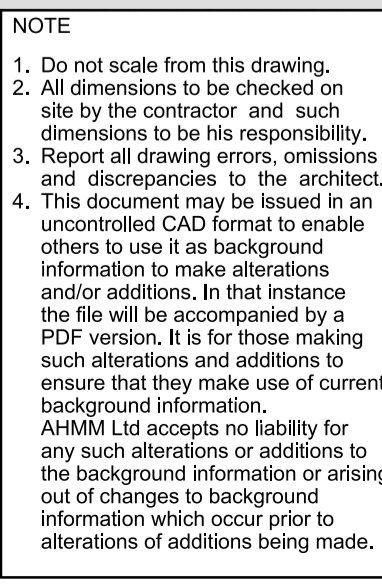
Please read in conjunction with Services/Structural/Acoustic/Fire Engineers Design drawings and documentation

CLIENT:	MELROSE CAPITAL
CONTRACTOR:	ERNEST PARK
STRUCTURAL ENGINEER:	PARMARBROOK
SERVICES ENGINEER:	GDM
COST CONSULTANT:	EXIGERE
PROJECT MANAGER:	GVA SECOND LONDON WALL
ACOUSTIC CONSULTANT:	-
CLADDING CONSULTANT:	-
SPECIFICATIONS CONSULTANT:	-

**NOTE**

- Do not scale from this drawing.
- All dimensions to be checked on site by the contractor and such dimensions to be his responsibility.
- Report all drawing errors, omissions and discrepancies to the architect.
- This document may be issued in an uncontrolled CAD format to enable others to use it as background information to make alterations and/or additions. In that instance the file will be accompanied by a PDF version. It is for those making such alterations and additions to ensure that they make use of current background information.

AHMM Ltd accepts no liability for any such alterations or additions to the background information or arising out of changes to background information which occur prior to alterations of additions being made.



drawn by	checked	scale	status
HM	AB	1:100@A1; 1:200@A3	INFORMATION
project	zone	source	classification
17145	00	A	(01)
drawing no.	revision		
110	-		

**ALLFORD HALL MONAGHAN MORRIS**

ARCHITECTS Ltd  
 MORELANDS, 5-23 OLD STREET LONDON EC1V 9HL  
 TEL 020 7251 5261 FAX 020 7251 5123 WEB WWW.AHMM.CO.UK

job title  
**17-33 WILLIAM ROAD**

drawing title / location  
**GA Plan: 17-33 William Road Existing Implementation Works - Ground Floor**