

- Bespoke Play Equipment**
- P01 - Timber Logs with Nets and Traverse Ropes - Contractor to make and install.
 - P02 - Timber Log Steps - Contractor to make and install.
 - P03 - Timber Stepping Stumps - Contractor to make and install.
 - P04 - Climbing ropes
 - P05 - Timber trunk steps
 - P06 - 'The Revestment'
 - P07 - Timber stepping stones
 - P08 - Timber standing posts
 - W01 - Willow Den
 - W02 - Low Willow Fence
 - W03 - Willow Tunnel

- Catalogue Play Equipment**
- C01 - Large Gated Cableway 50m
 - C02 - Orb Oak
 - C03 - 'Wheelspin' Roundabout by Inclusive Play
 - C04 - Quad Swing
 - C05 - Cradle Nest Swing
 - C06 - Slide with One Wave
 - C07 - Wide Slide

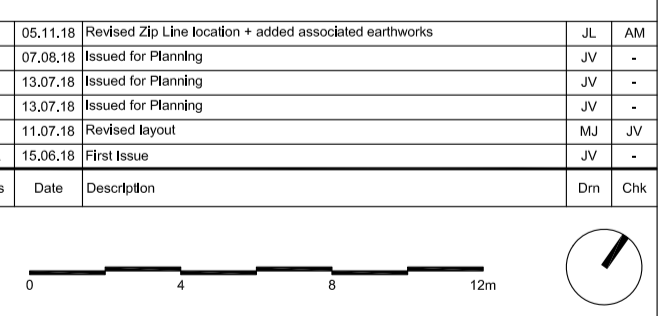
- Catalogue Water Play Equipment**
- D01 - Round Mud Table
 - D02 - Channel With Shutter
 - D03 - Solid Water Channel, 2m
 - D04 - Solid Water Channel, 2.5m
 - D05 - Solid Water Channel, 1.5m
 - D06 - Channel With Two Way Seal
 - D07 - Mill Wheel of Wood
 - D08 - Big Bucket Wheel
 - D09 - Pump Pedestal
 - D10 - Playground Pump
 - D11 - Mushroom Spring
 - D12 - Rectangular Flap
 - D13 - Sickle Gate
 - D14 - Bar Gate
 - D15 - Rotating Gate

- Notes**
Do not scale from this drawing.
All dimensions are drawn in millimetres.
Drawing & design copyright LUC.
Reproduction of this drawing in whole or in part is prohibited without prior permission.
- Key**
- Ownership Boundary
 - Application Boundary
 - Existing trees
 - Proposed Trees
 - Existing planting
 - Proposed planting
 - Play Fall Zones

- S01 - Tigermulch**
Tiger Mulch safety surface by Redlynch Leisure Ltd. 50mm depth. Laid over geotextile membrane. 75mm depth compacted Type 1 sub-base, and levelled and compacted subsoil. Natural mixed brown colours. All installed to manufacturers recommendations.
- S02 - Textured Concrete**
Hand-laid textured concrete surface, 250mm depth reinforced concrete over 150mm depth Type 1 sub-base. Concrete to have sand-blasted and textured surface finish, with stone pebbles, cobbles and boulders inset into surface. Colour finish to be agreed and confirmed.
- S03 - Play Sand**
300mm depth multi washed and triple-screened silica sand-based loose impact absorbing surface (LIAS) in accordance with BS EN 1176.
- S04 - Timber Decking**
Grooved Deck Boards in Hardwood with FSC Chain of Custody Certification by Woodscape, 25x145x2000mm boards, laid with a 5mm gap. Note: No Woodscape branding to appear on any of the timber. Laid over a geotextile membrane, and levelled and compacted subsoil.
- S05 - Stone Setts**
Reclaimed Granite Setts, 100x200x100mm, silver grey colour, laid in a staggered circular bond.
- S06 - Macadam - Pedestrian**
To Pedestrian loadings, designed by engineer.
- S07 - Self Binding Gravel**
Brecon self binding gravel path, natural buff colour, 60mm depth wearing course over 100mm depth well compacted DOT Type 1 sub-base and geotextile membrane.
- S08 - Play Bark**
Use salvaged playbark and top up with Playbark by Melcourt Ltd. Well-graded, chunky, pink bark, loose impact absorbing surface to a finished depth of 200mm, allowing for settlement and topping up.
- S09 - Reinforced Grass**
Ecoflex 95 porous paving grid by Terram (or similar approved), in black. Interlocking cellular porous plastic paving grid system for grass reinforcement.

- B01 - Play boulders, cobbles and pebbles**
Glacial boulders in varying sizes from CED Ltd (or similar approved), in black. Maximum dimension of 1.5m, minimum of 0.5m.
- E01 - Timber Edging**
Softwood pressure treated timber edges laid flush, 150x19mm with 50x50x500mm softwood pegs at 500mm centres and double pegged at corners/junctions.
- E02 - Granite Set Edging**
100x100x100mm silver grey granite setts laid flush with ground level in a 1 course stack bond edging.
- E03 - Timber Step**
300mm width treads x 150mm height risers formed using 100mm wide x 200mm deep Oak timber sleepers.
- F01 - Sky Seats**
Carved timber logs with bark left intact to form ergonomic seats. Approximately 0.8-1.0m x 1.5-2.0m length. Supplied by Touchwood, installed by contractor, set out by Jim Buchanan.
- F02 - Timber Seating**
Hardwood slatted linear timber seat, with small sections of back and arm-rests.
- F03 - Timber Seating Logs**
Salvaged/reclaimed timber tree trunks for seating. Minimum diameter of 450mm, minimum length of 2m. Timber should be from a sustainable source and confirmed with CA. To be set in grass or tiger mulch as shown, in a ground indentation to stop them rolling.
- F04 - Fence**
Post and strained wire fence in hedge.
- F05 - Salvaged Railing**
Salvaged railing from existing playground re-positioned and re-painted.
- F06 - Self-Closing Gate**
Froisse hydraulic self-closing gate by IAE, or similar approved. Must feature in built hydraulic unit which is shielded to prevent vandalism and is impossible to slam shut, and an anti-trap mechanism that cannot swing beyond its stop point. 1m height in black (RAL 9005) coloured polyester powder coated finish. (Playspec Flat Top fence by IAE). F06a is the same gate without the self-closing mechanism (for maintenance access).
- F07 - Picnic Bench**
Existing picnic bench to be re-located.
- F08 - Timber Seating Cubes**
300x300x300mm untreated Oak timber seating cubes, fixed below ground using steel anchor rods in concrete footings.

No.	Date	Description	By	CHK
F	05.11.19	Revised 2d Line location + added associated earthworks	JL	AM
E	07.08.19	Issued for Planning	JV	-
B	13.07.19	Issued for Planning	JV	-
C	13.07.19	Issued for Planning	JV	-
B	11.07.19	Revised layout	MA	JV
A	15.06.19	Final Issue	JV	-



LUC LUC London
43 Chalton Street, London, NW1 1JD
+44 (0)20 7383 5784
london@lucuse.co.uk
www.lucuse.co.uk

Project Gloucester Gate Playground The Regents Park	
Client The Royal Parks	
Scale @A1 1:200	Status PLANNING
Drawing Title Hard Landscape	
Job No 10335	Drawing No 10335-LD-PLN-210
Issue F	