

Waste Management Plan

The site, located 52-53 Russell Square, London, WC1B 4HP, is proposed for use as a School.

Provision has been made at the Bedford Place entrance of the premises for waste storage and collection (see Appendix 1 for location).

A room just inside the Bedford Place entrance will be used to store all waste – general waste, recycling, and food waste, which will be stored and collected separately.

The School has engaged with First Mile waste disposal services and will be finalizing a contract for collection and disposal of our waste.

In the waste storage room there will be a 240L standard waste bin for general waste, as well as a 240L-recycling bin. Food waste will be minimal and will be kept separately.

Waste products from the science laboratories will be handled in the appropriate way, following advice from CLEAPSS. These will be disposed of either under general waste, food waste or recycling, where appropriate. Alternatively, a yellow bin for sharps will be kept in the Lab Prep room. Bags from this bin must be labeled “Sharps”, and disposed of safely with general waste. Biological waste – bacteria samples etc. - and hazardous chemicals will be stored safely and collected by a specialist contractor on a bi-annual basis.

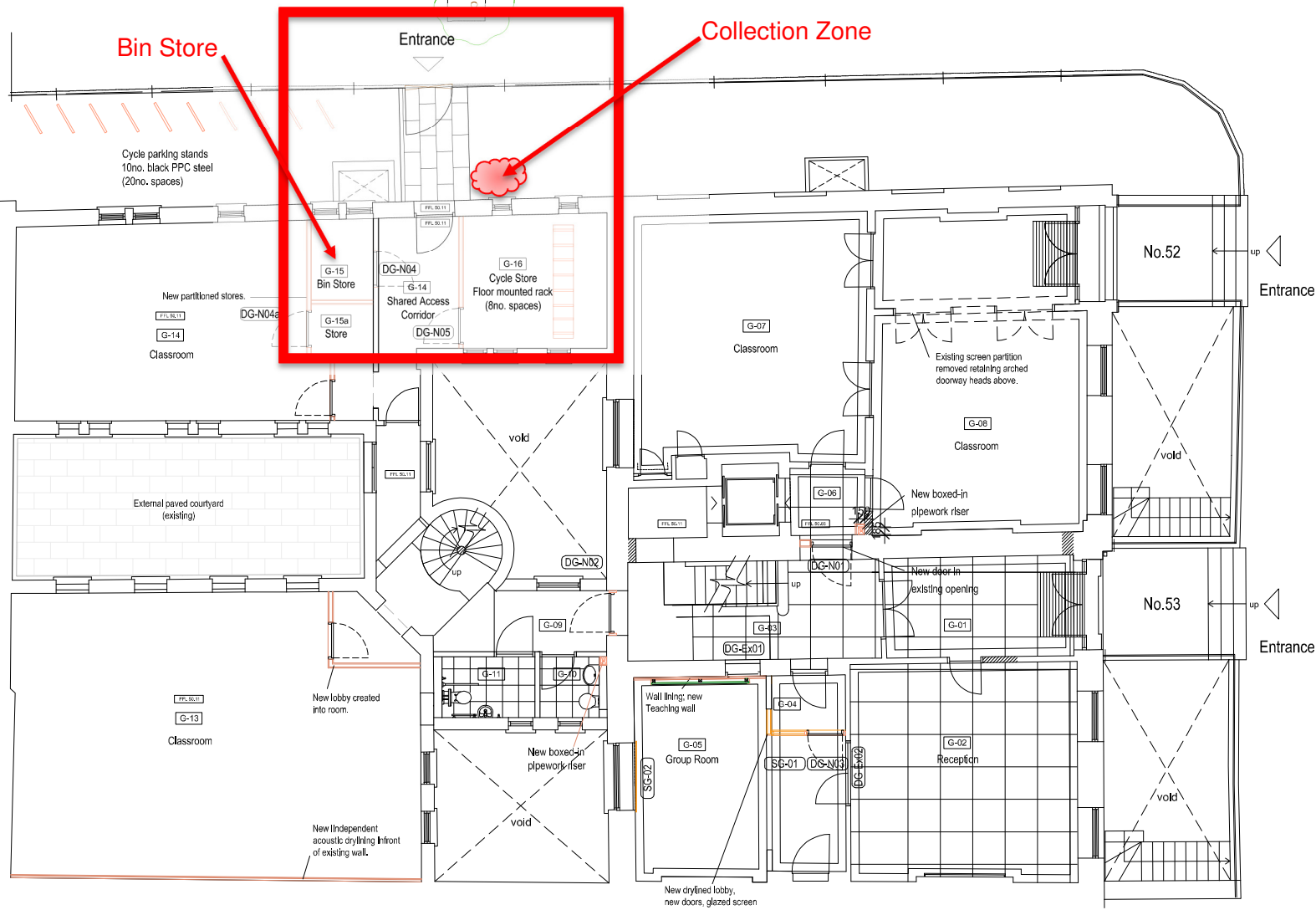
Confidential waste will be shredded and disposed of with recycled waste.

All waste will be removed daily via the Bedford Place entrance, on ground floor level, and placed within the School’s external gated area, labelled *Collection Zone* (see Appendix 1). Cleaning staff will be responsible for placing bins in the Collection Zone upon closing of the School for the day (6.00pm).

First Mile will carry out collection of general waste, recycling and food waste on a daily basis, and waste will be collected directly from the Collection Zone.

NOTES
 Copyright: All rights reserved.
 This drawing must not be reproduced without permission.
 This drawing must not be copied. Dimensions are in millimetres unless specified.

Bedford Place



Russell Square

01	WORK	PREPARED	001	00
02	WORK	DESIGNED	001	00
03	WORK	CONSTRUCTED	001	00



elliswilliams
ARCHITECTS

12-53 Russell Square - Phase 1
 Proposed Ground Floor Plan
 2262_AG(00)02
 05/10/21 APPROVAL
 DRAWN BY: EWA
 05/10/21 (00) (01)
 04/10/21 (01) (01)

École Jeannine Manuel UK is a charitable company limited by guarantee
 Registered in England and Wales with company number 09014998
 Registered office 43-45 Bedford Square, London WC1B 3DN

135-136 Curzon Road London EC2A 3BX
 T: +44 (0)20 7847 7200 E: info@elliswilliams.co.uk