

STRUCTURAL STEELWORK NOTES:

- 5.0 STEELWORK
- 5.1 ALL STEELWORK HAS BEEN DESIGNED IN ACCORDANCE WITH EC3 UNLESS STATED OTHERWISE. ALL STEEL SHALL BE GRADE S355 UNLESS NOTED OTHERWISE. THESE NOTES TO BE READ IN CONJUNCTION WITH THE NBS SPECIFICATIONS. THE CONTRACTOR SHALL COMPLETE THE DESIGN OF ANY MEMBERS NOT DETAILED ON THE DRAWINGS.
- ALL FABRICATION, WELDING, ERECTION, BOLTING AND CONNECTIONS SHALL COMPLY WITH THE NBS REFERENCES THEREIN AND TO ENGINEERS SPECIFICATIONS.
- 5.2 ALL BOLTS SHALL BE GRADE 8.8 IN ACCORDANCE WITH THE NBS UNLESS OTHERWISE NOTED.
- 5.3 DESIGN OF ALL CONNECTIONS AND BASEPLATES IS THE RESPONSIBILITY OF THE STEELWORK SUB-CONTRACTOR. THE CONTRACTOR SHALL PROVIDE PLAN AND DETAILED CALCULATIONS SHOWING ALL THESE CONNECTIONS.
- 5.4 THE STEELWORK CONTRACTOR SHALL BE RESPONSIBLE FOR SURVEYING THE EXISTING ADJACENT SURROUNDING STRUCTURE IN ORDER TO ESTABLISH THE FINAL POSITION AND SETTING OUT OF THE STEELWORK
- WHERE DIMENSIONS ARE NOT SHOWN ON THE ENGINEER'S DRAWINGS AND WHICH NEED TO BE OBTAINED FROM SURVEY INFORMATION, THE STEELWORK SUB-CONTRACTOR SHALL ESTABLISH THESE DIMENSIONS AND ADD THEM TO THEIR FRAMING PLANS.
- 5.5 WHERE REQUESTED BY THE ENGINEER THE CONTRACTOR SHALL SUBMIT FABRICATION ARRANGEMENT DRAWINGS SHOWING ALL MEMBER SIZES FOR REVIEW/COMMENT IN DIGITAL FORMAT (PDF). DIMENSIONAL SETTING OUT TO BE REVIEWED BY THE ARCHITECT.
- 5.6 ALL SECONDARY STEELWORK NOT SPECIFIED ON THE DRAWINGS SHALL BE DESIGNED AND DETAILED BY THE SUB CONTRACTOR. THE CONTRACTOR IS RESPONSIBLE FOR CO-ORDINATION WITH CLADDING SUPPORT REQUIREMENTS AND SUPPLY OF ALL NECESSARY SUPPORTS.
- 5.7 ALL TEMPORARY BRACING/STABILITY OF THE STEEL FRAME DURING ERECTION IS THE RESPONSIBILITY OF THE CONTRACTOR.

STEEL FRAMING SCHEDULE

REF.	DESCRIPTION
C1	EXISTING 203x203x46 UC COLUMN

!
NOTIFY STRUCTURAL ENGINEER IF SOFT SPOTS OCCUR AT FORMATION LEVEL

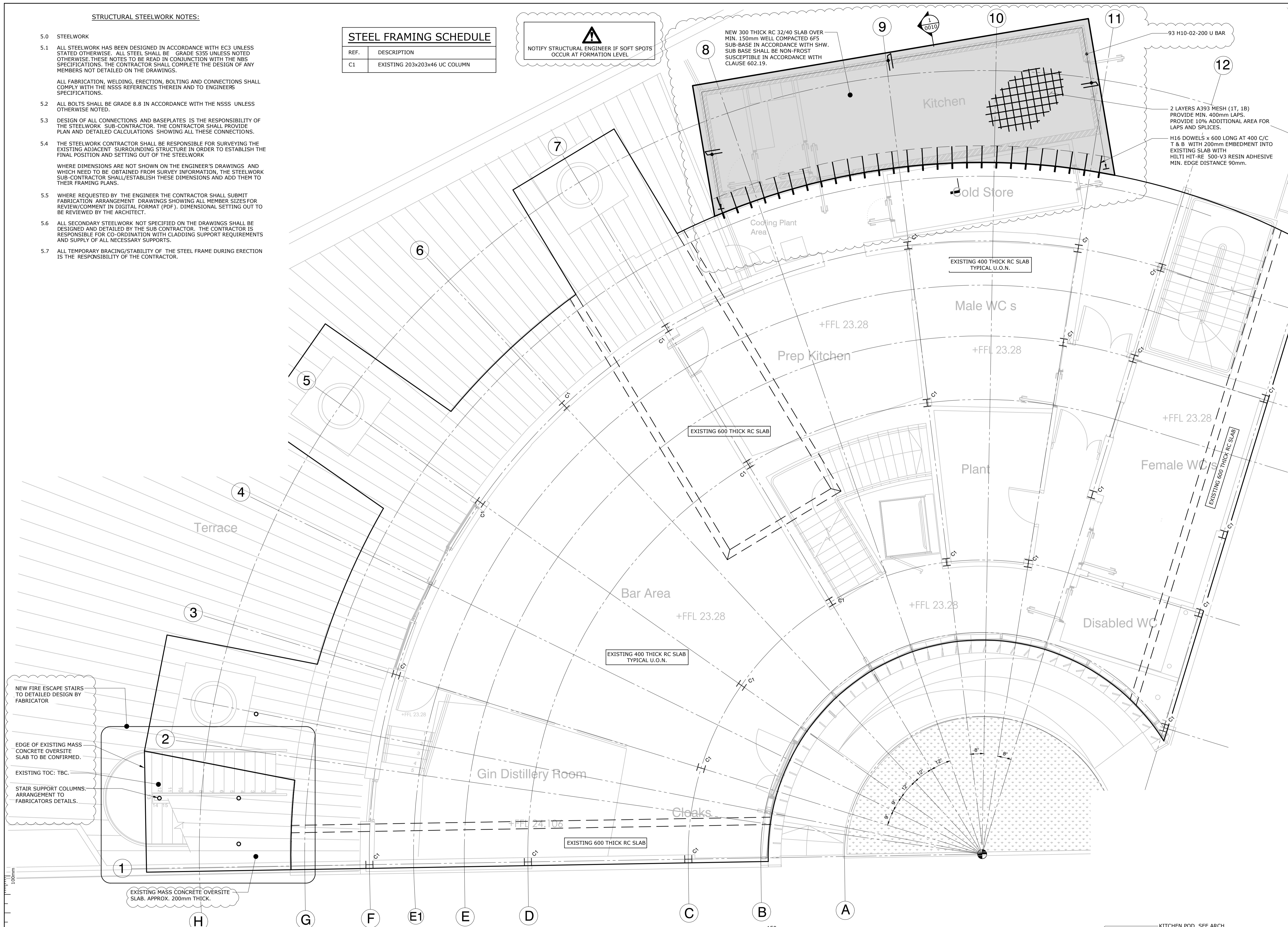
NEW 300 THICK RC 32/40 SLAB OVER MIN. 150mm WELL COMPACTED 6F5 SUB-BASE IN ACCORDANCE WITH SHW. SUB-BASE SHALL BE NON-FROST SUSCEPTIBLE IN ACCORDANCE WITH CLAUSE 602.19.

93 H10-02-200 U BAR

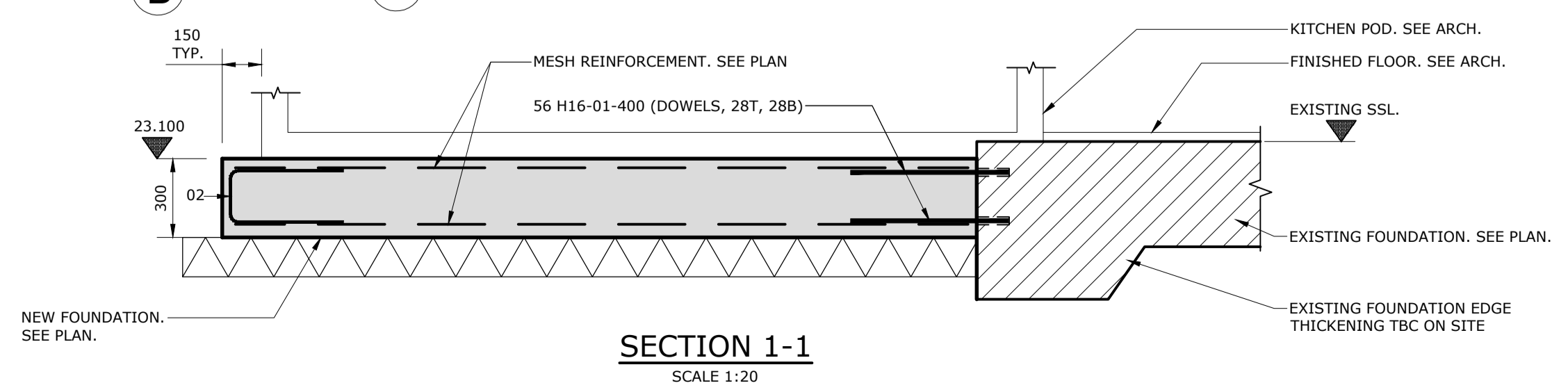
2 LAYERS A393 MESH (1T, 1B) PROVIDE MIN. 400mm LAPS. PROVIDE 10% ADDITIONAL AREA FOR LAPS AND SPLICES.

H16 DOWELS x 600 LONG AT 400 C/C T & B WITH 200mm EMBEDMENT INTO EXISTING SLAB WITH HILTI HIT-RE 500-V3 RESIN ADHESIVE MIN. EDGE DISTANCE 90mm.

- NOTES**
1. THIS DRAWING IS TO BE READ IN CONJUNCTION WITH ALL RELEVANT ENGINEERS, ARCHITECTS AND SPECIALISTS DRAWINGS AND THE SPECIFICATION.
 2. DO NOT SCALE FROM THIS DRAWING MANUALLY OR ELECTRONICALLY. WRITTEN PERMISSION MUST BE OBTAINED FROM MLM PRIOR TO SCALING ELECTRONICALLY OR USING THIS ELECTRONIC FILE.
 3. REINFORCING STEEL CONCRETE COVER:
TOP = 35mm
BTM. & SIDES = 50mm
 4. REFER TO BAR BENDING SCHEDULE No. 669931-MLM-XX-FN-SH-5-0010-C02



FOUNDATION AND GROUND FLOOR GENERAL ARRANGEMENT
SCALE 1:50



CONSTRUCTION (DESIGN AND MANAGEMENT) REGULATIONS 2015 DESIGNERS RISK INFORMATION

IN ACCORDANCE WITH THE CONSTRUCTION (DESIGN AND MANAGEMENT) REGULATIONS THE HAZARDS ASSOCIATED WITH CONSTRUCTING AND MAINTAINING THE STRUCTURE HAVE BEEN ASSESSED. THE SIGNIFICANT/UNUSUAL RESIDUAL HAZARDS AND THE PROVISION MADE IN THE DESIGN SOLUTION TO MITIGATE THEM ARE INDICATED ON THE DRAWINGS THUS:

!

ASSUMPTIONS MADE ABOUT THE METHOD OF CONSTRUCTION/MAINTENANCE/DEMOLITION HAVE BEEN STATED WHERE THESE FORM AN INTEGRAL PART OF MANAGING THE RISKS AND HAZARDS, HOWEVER THIS DOES NOT RESTRICT THE CONTRACTOR TO THESE METHODS ALONE. IT IS UNDERSTOOD THAT A COMPETENT CONTRACTOR WILL CARRY OUT CONSTRUCTION, MAINTENANCE AND DEMOLITION WORK IN ACCORDANCE WITH RECOGNISED GOOD INDUSTRY PRACTICE.

THE ABOVE NOTES REFER SPECIFICALLY TO THE INFORMATION SHOWN ON THIS DRAWING. REFER TO THE DESIGNERS RISK INFORMATION FOR FURTHER CLARIFICATION.

REV	DATE	REVISION	MADE	CHK	APP
C02	30.10.2018	KITCHEN POD FOUNDATION SLAB REVISED SSL AMENDED	GJB	EG	.
C01	15.10.2018	CONSTRUCTION ISSUE	GJB	EG	MT
P01	30.08.2018	PRELIMINARY ISSUE	GJB	EG	MT

PURPOSE OF ISSUE: **CONSTRUCTION**

SUITABILITY DESCRIPTION: APPROVED AS STAGE COMPLETE A3

Connect 38,
Dover Place, Ashford, Kent
TN23 1FB
Tel: 01233 610530
Website: www.mlmgroupp.com

CLIENT: GUY HOLLAWAY ARCHITECTS

PROJECT: CHAPEL DOWN GIN BAR AND DISTILLERY

DRAWING TITLE: FOUNDATION & GROUND FLOOR GENERAL ARRANGEMENT

DRAWN/DESIGN	GJB/EG	MLM REF	STATUS	REVISION		
AS SHOWN @A1	669931	A3	C02			
PROJECT	ORIGINATOR	VOLUME/ SYSTEM	LEVELS & LOCATIONS	TYPE	ROLE	NUMBER
669931-MLM-ZZ-FN-DR-S-0010						