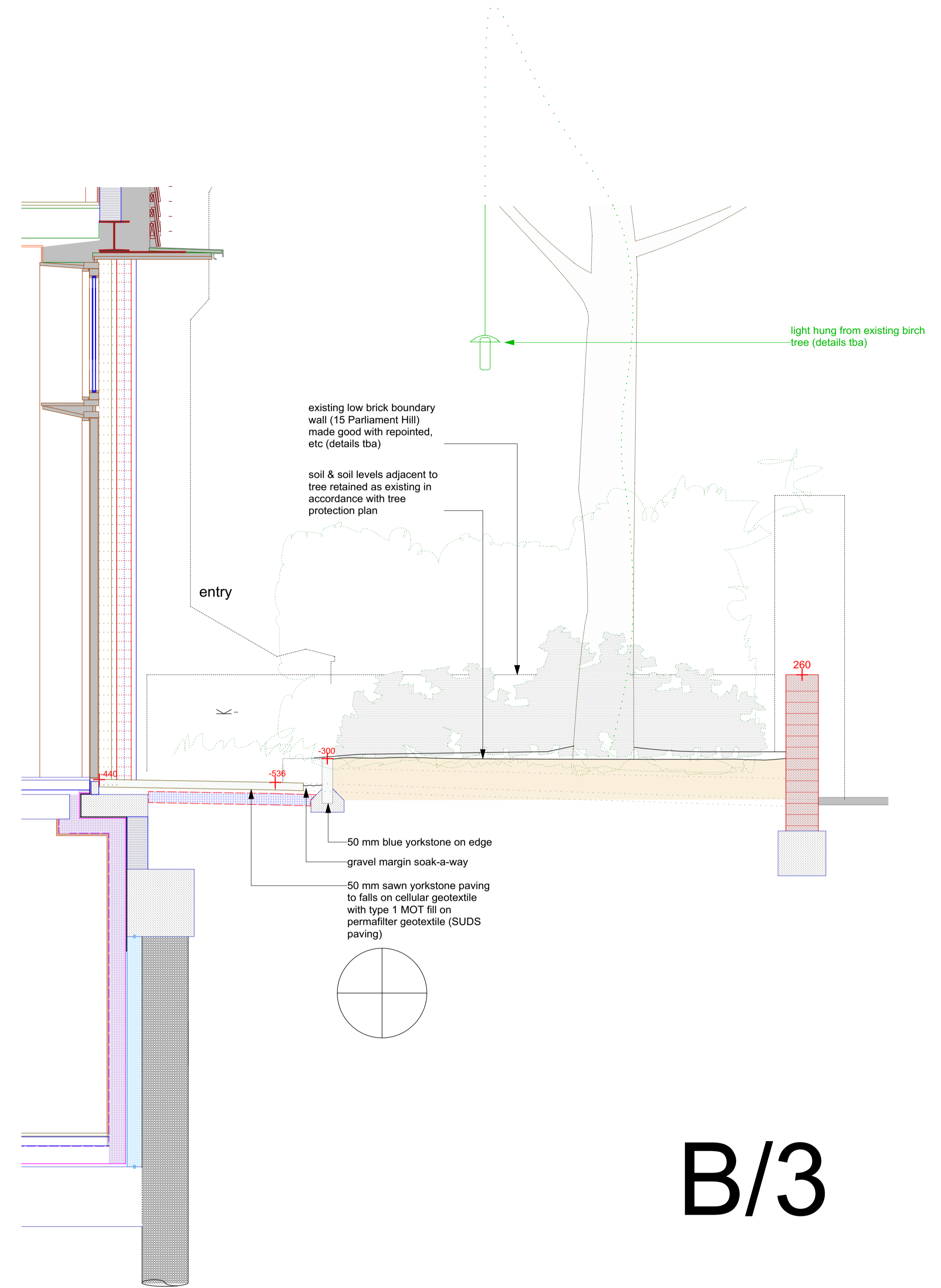


B/2



B/3

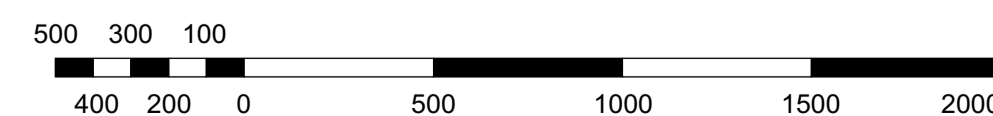
**front garden:
sections B/2 & B/3**

Woollacott Gilmartin
15a Parliament Hill
London NW3 2SY
wgarchitects@mac.com
woollacottgilmartin.com

Architects

07891 264 889

scale 1:20/ print @ A1



**external works
front garden**

Proposed New House: 15a Parliament Hill

01.11.18

P/extwrks/1:20/215