

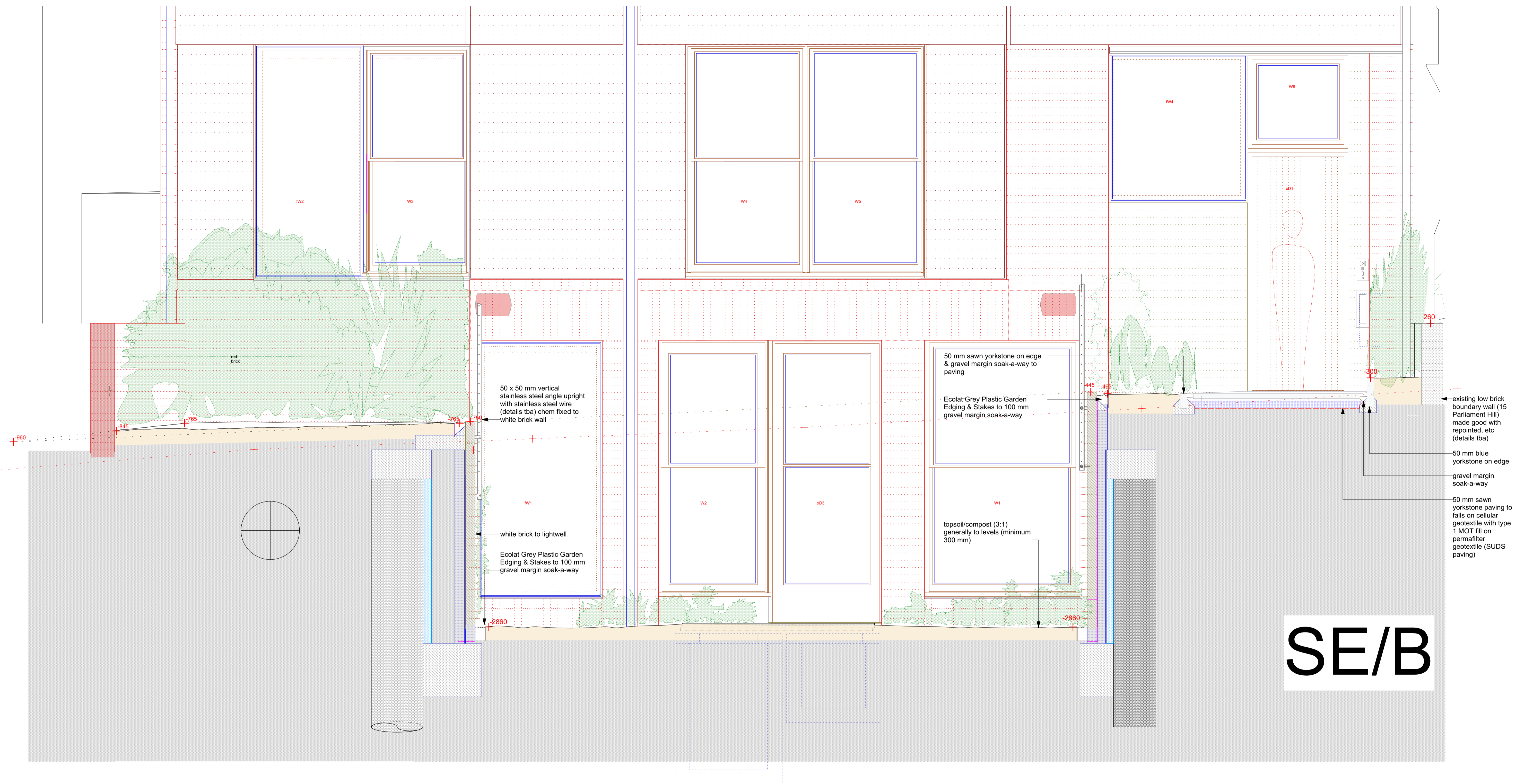
SW

D/2  
B/1

D/1

B/2

NE  
B/3



SE/B

# front garden: section SE/B

Woolacott Gilmartin  
15a Parliament Hill  
London NW3 2SY  
wgarchitects@mac.com  
woolacottgilmartin.com

Architects  
07891 264 889

scale 1:20/ print @ A1

external works  
front garden  
Proposed New House: 15a Parliament Hill

01.11.18  
P/extwrks/1:20/212