

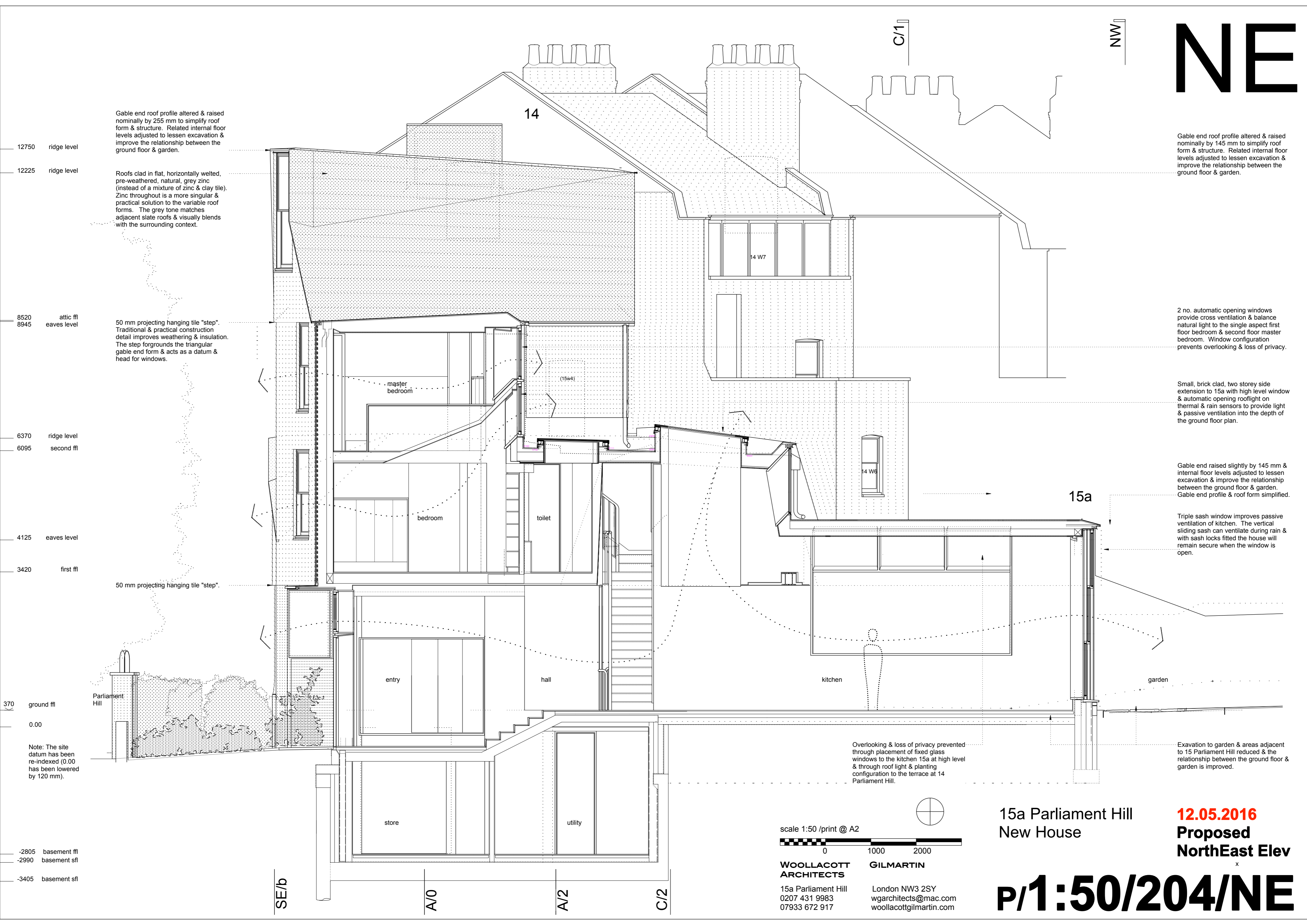
NE

NW

C/1

14

15a



Gable end roof profile altered & raised nominally by 255 mm to simplify roof form & structure. Related internal floor levels adjusted to lessen excavation & improve the relationship between the ground floor & garden.

Roofs clad in flat, horizontally wetted, pre-weathered, natural, grey zinc (instead of a mixture of zinc & clay tile). Zinc throughout is a more singular & practical solution to the variable roof forms. The grey tone matches adjacent slate roofs & visually blends with the surrounding context.

50 mm projecting hanging tile "step". Traditional & practical construction detail improves weathering & insulation. The step foregrounds the triangular gable end form & acts as a datum & head for windows.

Gable end roof profile altered & raised nominally by 145 mm to simplify roof form & structure. Related internal floor levels adjusted to lessen excavation & improve the relationship between the ground floor & garden.

2 no. automatic opening windows provide cross ventilation & balance natural light to the single aspect first floor bedroom & second floor master bedroom. Window configuration prevents overlooking & loss of privacy.

Small, brick clad, two storey side extension to 15a with high level window & automatic opening rooflight on thermal & rain sensors to provide light & passive ventilation into the depth of the ground floor plan.

Gable end raised slightly by 145 mm & internal floor levels adjusted to lessen excavation & improve the relationship between the ground floor & garden. Gable end profile & roof form simplified.

Triple sash window improves passive ventilation of kitchen. The vertical sliding sash can ventilate during rain & with sash locks fitted the house will remain secure when the window is open.

Overlooking & loss of privacy prevented through placement of fixed glass windows to the kitchen 15a at high level & through roof light & planting configuration to the terrace at 14 Parliament Hill.

Excavation to garden & areas adjacent to 15 Parliament Hill reduced & the relationship between the ground floor & garden is improved.

12750 ridge level
12225 ridge level
8520 attic ffl
8945 eaves level
6370 ridge level
6095 second ffl
4125 eaves level
3420 first ffl
370 ground ffl
0.00
-2805 basement ffl
-2990 basement sfl
-3405 basement sfl

Note: The site datum has been re-indexed (0.00 has been lowered by 120 mm).

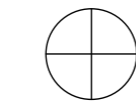
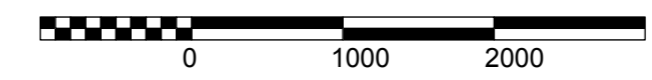
SE/b

A/0

A/2

C/2

scale 1:50 / print @ A2



WOOLLACOTT ARCHITECTS
15a Parliament Hill
0207 431 9983
07933 672 917

GILMARTIN
London NW3 2SY
wgarchitects@mac.com
woollacottgilmartin.com

15a Parliament Hill
New House

12.05.2016
Proposed
NorthEast Elev

P/1:50/204/NE