

## 1.2 ADAPTABLE UNIT PLANS

### LEVEL 05 - UNIT 12\_ 3BD DUBLEX

#### M4 (2) Apartment Design – Key

##### 1. Principle Private entrance

- Clear 1500 x 1500mm Space outside main entrance of apartment is provided and exceeds the minimum 1200 x 1200mm required.
- Main Entrance Door has a clear 850mm Clear opening width with a 300mm nib to leading edge.
- Depth of the reveal on the leading edge side does not exceed 200mm in depth.
- A level threshold to apartment is provided.

##### 2. Circulation areas and Internal doorways

- All Corridors provide a clear width of 1050mm or wider.
- Every door has a clear width of 775mm (standard 826mm door leaf up to 44mm is deemed to be satisfactory for 775m clear width)
- Every door on the entrance storey have a leading edge of 300mm
- Private stair has a minimum width of 1000m

##### 3. Habitable Rooms

###### Living and Kitchen

- A minimum of 1200mm clear space in-front of and between kitchen cupboards are provided.

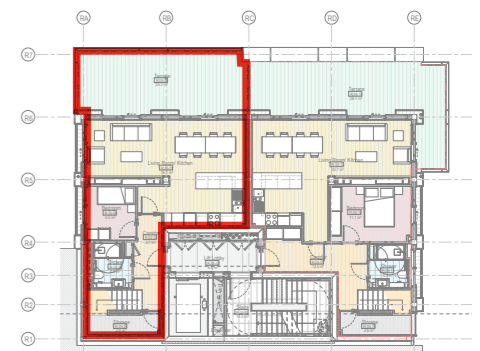
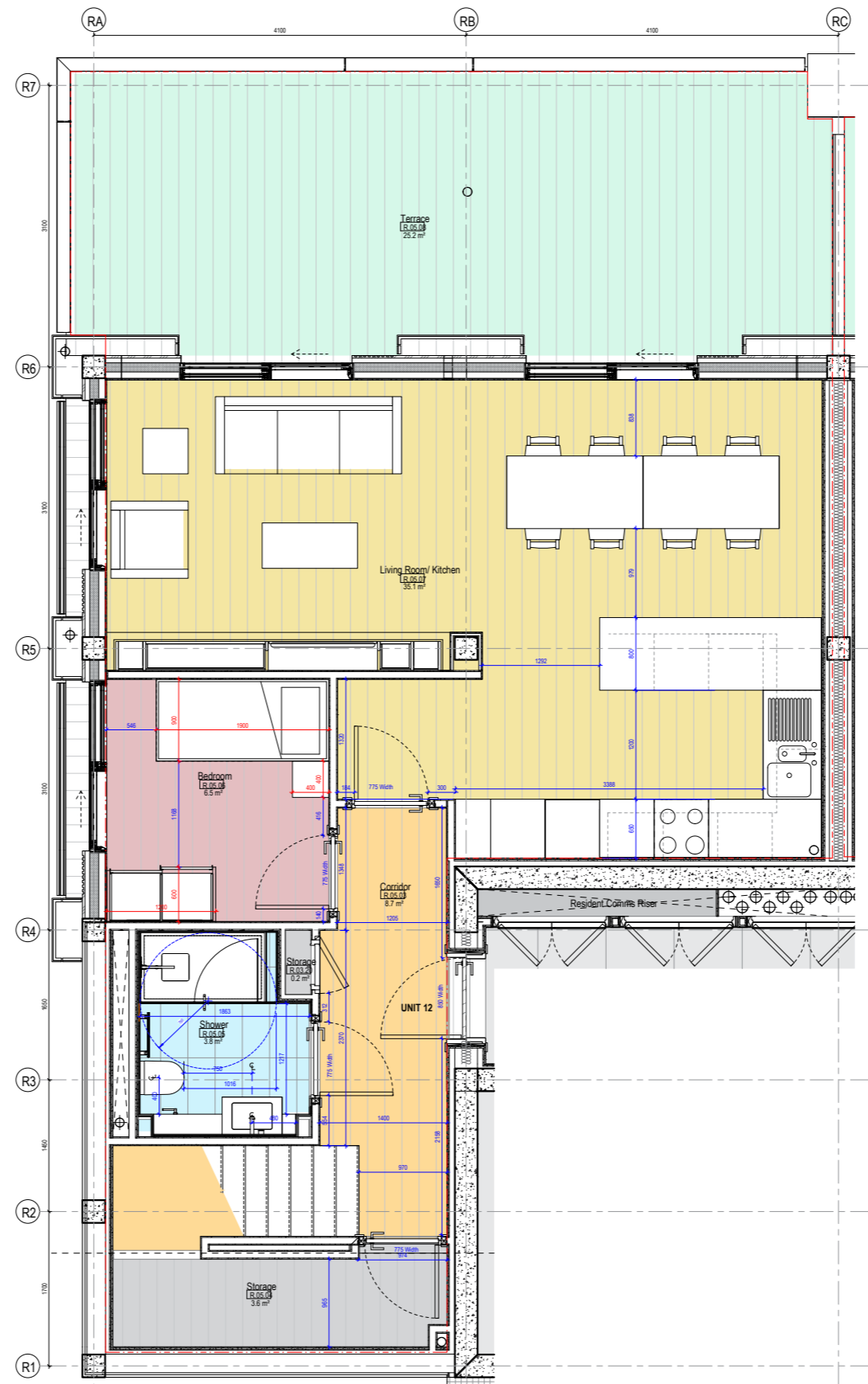
###### Bedrooms

- Every bedroom has a clear access route of 750mm from the doorway to the window.
- Principle bedroom provides a minimum 750mm clear access zone to one side and foot of the bed.
- Single and other double rooms to provide a minimum 750mm clear access zone to one side of each bed.

Bedroom furniture sizes are in accordance with the Appendix D: Furniture Schedule.

###### Bathrooms

- 1500 x 1500mm clear manoeuvring space is provided in
- 1100mm min clearance in front of the WC pan is provided.
- 1100 x 700mm min transfer space next to the bath is provided.
- 1000 x 1000mm Door Swing level shower area is provided.
- 300mm clearance either side is provided for access to the taps.



## 1.2 ADAPTABLE UNIT PLANS

### LEVEL 06 - UNIT 12\_ 3BD DUBLEX

#### M4 (2) Apartment Design – Key

##### 1. Principle Private entrance

- Clear 1500 x 1500mm Space outside main entrance of apartment is provided and exceeds the minimum 1200 x 1200mm required.
- Main Entrance Door has a clear 850mm Clear opening width with a 300mm nib to leading edge.
- Depth of the reveal on the leading edge side does not exceed 200mm in depth.
- A level threshold to apartment is provided.

##### 2. Circulation areas and Internal doorways

- All Corridors provide a clear width of 1050mm or wider.
- Every door has a clear width of 775mm (standard 826mm door leaf up to 44mm is deemed to be satisfactory for 775m clear width)
- Every door on the entrance storey have a leading edge of 300mm
- Private stair has a minimum width of 1000m

##### 3. Habitable Rooms

###### Living and Kitchen

- A minimum of 1200mm clear space in-front of and between kitchen cupboards are provided.

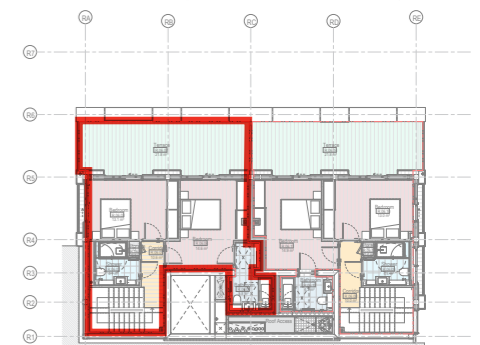
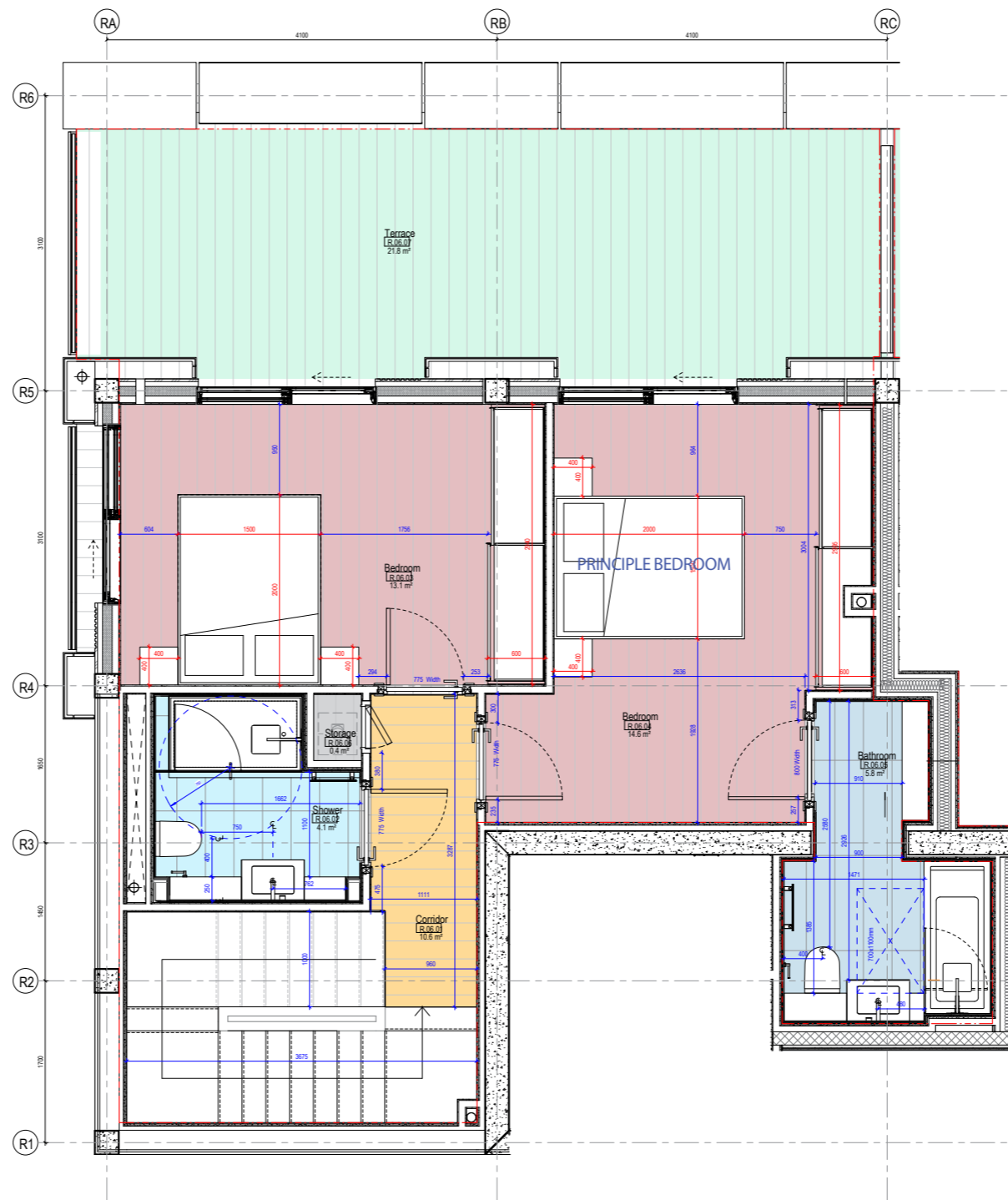
###### Bedrooms

- Every bedroom has a clear access route of 750mm from the doorway to the window.
- Principle bedroom provides a minimum 750mm clear access zone to one side and foot of the bed.
- Single and other double rooms to provide a minimum 750mm clear access zone to one side of each bed.

Bedroom furniture sizes are in accordance with the Appendix D: Furniture Schedule.

###### Bathrooms

- 1500 x 1500mm clear manoeuvring space is provided in
- 1100mm min clearance in front of the WC pan is provided.
- 1100 x 700mm min transfer space next to the bath is provided.
- 1000 x 1000mm Door Swing level shower area is provided.
- 300mm clearance either side is provided for access to the taps.



## 1.2 ADAPTABLE UNIT PLANS

### LEVEL 05 - UNIT 13\_ 3BD DUBLEX

#### M4 (2) Apartment Design – Key

##### 1. Principle Private entrance

- Clear 1500 x 1500mm Space outside main entrance of apartment is provided and exceeds the minimum 1200 x 1200mm required.
- Main Entrance Door has a clear 850mm Clear opening width with a 300mm nib to leading edge.
- Depth of the reveal on the leading edge side does not exceed 200mm in depth.
- A level threshold to apartment is provided.

##### 2. Circulation areas and Internal doorways

- All Corridors provide a clear width of 1050mm or wider.
- Every door has a clear width of 775mm (standard 826mm door leaf up to 44mm is deemed to be satisfactory for 775m clear width)
- Every door on the entrance storey have a leading edge of 300mm
- Private stair has a minimum width of 1000m

##### 3. Habitable Rooms

###### Living and Kitchen

- A minimum of 1200mm clear space in-front of and between kitchen cupboards are provided.

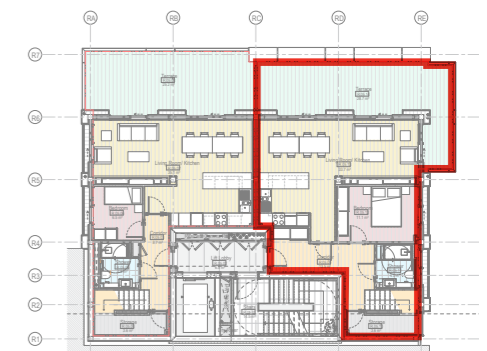
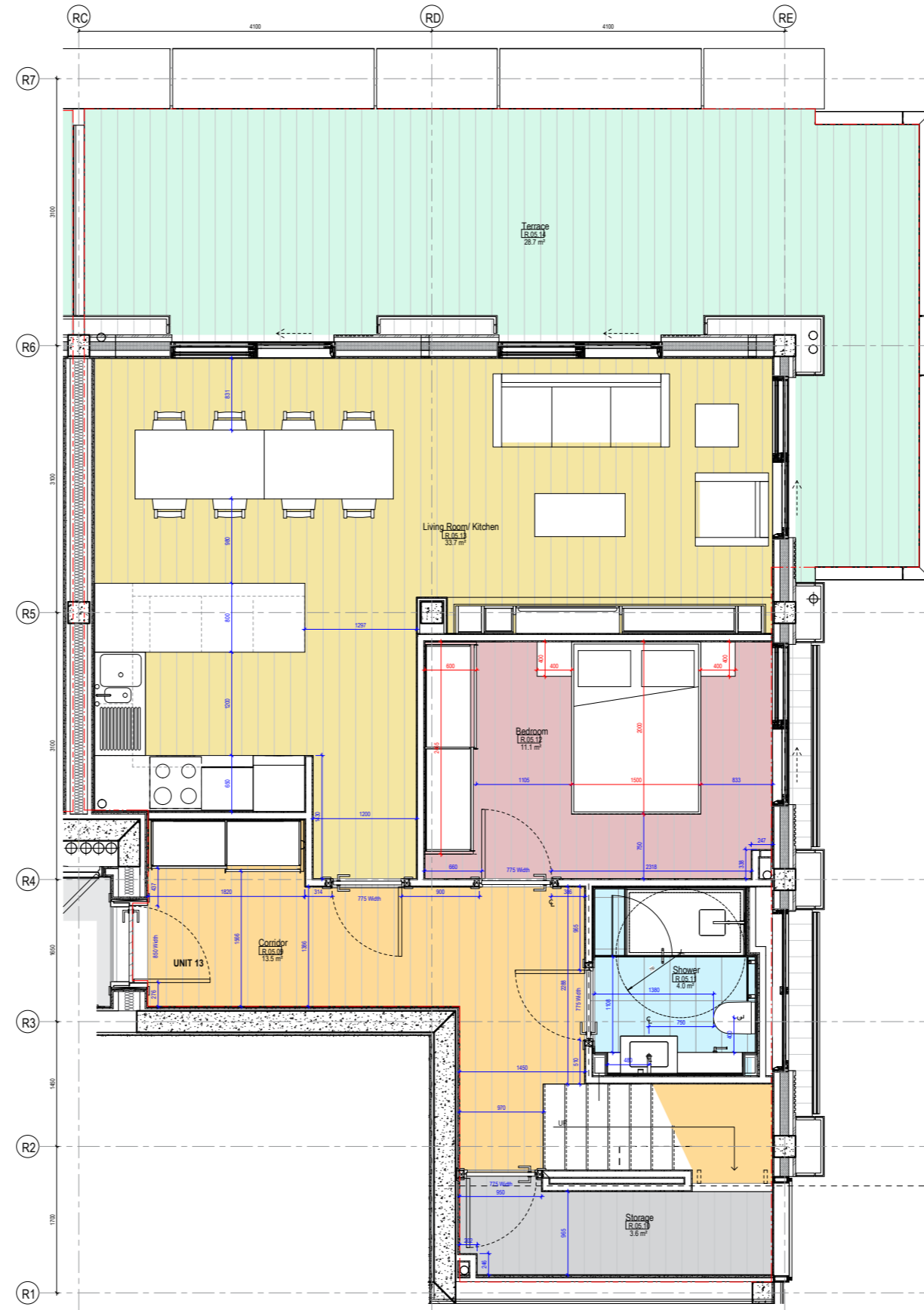
###### Bedrooms

- Every bedroom has a clear access route of 750mm from the doorway to the window.
- Principle bedroom provides a minimum 750mm clear access zone to one side and foot of the bed.
- Single and other double rooms to provide a minimum 750mm clear access zone to one side of each bed.

Bedroom furniture sizes are in accordance with the Appendix D: Furniture Schedule.

###### Bathrooms

- 1500 x 1500mm clear manoeuvring space is provided in
- 1100mm min clearance in front of the WC pan is provided.
- 1100 x 700mm min transfer space next to the bath is provided.
- 1000 x 1000mm Door Swing level shower area is provided.
- 300mm clearance either side is provided for access to the taps.



## 1.2 ADAPTABLE UNIT PLANS

### LEVEL 06 - UNIT 13\_ 3BD DUBLEX

#### M4 (2) Apartment Design – Key

##### 1. Principle Private entrance

- Clear 1500 x 1500mm Space outside main entrance of apartment is provided and exceeds the minimum 1200 x 1200mm required.
- Main Entrance Door has a clear 850mm Clear opening width with a 300mm nib to leading edge.
- Depth of the reveal on the leading edge side does not exceed 200mm in depth.
- A level threshold to apartment is provided.

##### 2. Circulation areas and Internal doorways

- All Corridors provide a clear width of 1050mm or wider.
- Every door has a clear width of 775mm (standard 826mm door leaf up to 44mm is deemed to be satisfactory for 775m clear width)
- Every door on the entrance storey have a leading edge of 300mm
- Private stair has a minimum width of 1000m

##### 3. Habitable Rooms

###### Living and Kitchen

- A minimum of 1200mm clear space in-front of and between kitchen cupboards are provided.

###### Bedrooms

- Every bedroom has a clear access route of 750mm from the doorway to the window.
- Principle bedroom provides a minimum 750mm clear access zone to one side and foot of the bed.
- Single and other double rooms to provide a minimum 750mm clear access zone to one side of each bed.

Bedroom furniture sizes are in accordance with the Appendix D: Furniture Schedule.

###### Bathrooms

- 1500 x 1500mm clear manoeuvring space is provided in
- 1100mm min clearance in front of the WC pan is provided.
- 1100 x 700mm min transfer space next to the bath is provided.
- 1000 x 1000mm Door Swing level shower area is provided.
- 300mm clearance either side is provided for access to the taps.

