

Planning Condition 10 - Provision of Soft Landscaping

6.1 Soft landscaping proposals by BBUK

planting schedule														CONSTRUCTION
to read in conjunction with planting plan TPB-BBU-XXX-ZZ-Y-94-0002														
job name	16139													
date	Oct-16													
job reference														
abbrev	plant species	quantity	size	spacing in mm/ density m2	flower color	fruit color	flowering/ fruit period	mature height	mature spread	shade/ sun/ semi-shade	native	wildlife beneficial	Evergreen/ deciduous	other notable characteristics / notes
bulbs														
grasses														
Ales	Anemanthele lessoniana	26	5l	450 5/m2	purple/bronze		Summer	750	750 - 900	Sun, Shade			E	Remove old foliage to tidy if necessary
Cfl	Carex flacca	33	3l	250 11/m2	Inconspicuous			250mm	400mm	Sun/Light Shade	Y		E	Remove old foliage to tidy in spring
Dc 'G'	Deschampsia caespitosa 'Goldtau'	6	3l	400 6/m2	Gold/Silver and Purple		Summer	700 - 900	350 - 600	Sun/Part Shade		Y	E	Cut back old stems to ground in early spring.
Fq 'EB'	Festuca glauca 'Elijah Blue'	19	3l	250 16/m2	blue green, pale brown		Summer	300	250	Sun		Y	E	
Mc'M'	Molinia caerulea 'Moorhexe'	60	3l	250 16/m2	Purple		Late Summer	600 - 800	400	Sun/Part Shade			D	Remove dead foliage and old flower in spring.
Sau	Sesleria autumnalis	357	5l	400 6/m2	white		summer	800	500	Sun/Part Shade			E	remove dead leaves in early spring.
perennials														
A'T'	Achillea 'Terracotta'	16	3l	350 8/m2	yellow orange		Summer	500 - 800	300 - 400	Sun		Y	D	
A'WD'	Agapanthus 'White Dwarf'	5	3l	350 8/m2	white		July	450	450	Sun/Part Sun			D	Remove old flowers and yellowed leaves
Ar	Ajuga reptans	144	9cm	150 70/m2	Blue, purple		Spring	150	500 - 700	Sun/Shade	Y		Semi-E	Native.
As	Asplenium scolopendrium	5	5l	350 8/m2				300-500	300-500	Shade/Part Sun	Y		E	Cut back old fronds
At	Asplenium trichomanes	10	5l	350 8/m2				300-500	300-500	Dead or damaged fronds may be removed	Y		E	Cut back old fronds
DI	Dryopteris lepidopoda	5	3l	350 8/m2				600	500	full shade			E	Tidy spent leaves
Dw	Dryopteris wallichiana	3	3l	400 6/m2				700 - 1000	500 - 1000	Full shade/partial shade	Y		Semi-E	Native. Dead or damaged fronds may be removed as necessary
Exy'N'	Epimedium x youngianum 'niveum'	7	3l	350 8/m2	White		Spring	300	300	Part Shade/Shade			Semi-E	Check for overcrowding & thin if necessary in autumn
E'BH'	Euphorbia 'Blue Haze'	25	3l	250 12/m2	Lime		Late Spring	400	400	Full sun			E	sap may irritate
God	Galium odoratum	68	9cm	150 70/m2	White		Summer	100 - 500	100 - 500	Shade		Y	D	
H 'AB'	Heuchera 'Autumn Bride'	16	3l	250 16/m2	white cream		late summer	400	400	Sun/Part Shade			E	
H'BB'	Heuchera 'Bronze Beauty'	65	3l	300 8/m2	cream		Summer	400	300 - 500	Sun/Part Shade			E	Tidy old leaves in Spring or when needed
H'PP'	Heuchera 'Plum Pudding'	40	3l	250 16/m2	white		Spring/Sumr	300	300 - 400	Sun/Part Shade			E	
K'GJ'	Kniphofia 'Green Jade'	9	3l	400 6/m2	Yellow/Green		End summer	1000	600	Part shade/shade			E	Cut down old flower stems after flowering.
Lm'MW'	Liriope muscari 'Monroe White'	375	3l	200 25/m2	white		Summer	100 - 400	100 - 400	Sun/Shade			E	
Ps'H'	Polystichum setiferum 'Herrenhausen'	3	5l	300 9/m2	No Value			500 - 1000	500 - 1000	Full shade/partial shade		Y	Semi-E	Dead or damaged fronds may be removed as necessary.
Ss'AM'	Sisyrinchium striatum 'Aunt May'	23	3l	350 8/m2				400	500	Full Sun			Evergreen	Remove discoloured foliage and faded flowers
Tc	Tiarella cordifolia	20	3l	400 6/m2	White		Summer	300	300 - 500	Sun/Shade			Semi-E	Remove spent flowers and leaves as required.
shrubs														
Bd	Berberis darwinii	10	10l	600 3/m2	orange		Spring	1000 - 2000	1000 - 1500	Sun, part shade, shade		Y	E	prune every 2 years after flowering
Cb'P'	Callicarpa bodinieri 'Profusion'	10	10l	1000 1/m2	pink	bright violet	July	1500 - 3000	1500 - 2500	Sun/part shade		Y	D	
Cv'ST'	Calluna vulgaris 'Spring Torch'	28	2l	250 16/m2	Pink			200 - 500	300 - 500	Full Sun		Y	E	Prune immediately after flowering.
Ct'R'	Ceanothus thyrsiflorus 'Repens'	36	10l	450 5/m2	Blue			1000	2500	Sun		Y	E	Prune annually after flowering.
Ei	Euonymus japonicus (instant hedge 800)	20	1m bag		Green		Inconspicuous	2000	600	Partial to full sun			Evergreen	Shear annually to shape
Ln(ball)	Laurus nobilis	3	15l	750 2/m2		Red		600	600	Sun/Part Shade		Y	E	
L'BC'	Lavandula 'Blue Cedar'	8	5l	450 5/m2	pale lilac blue		early summer	600	750	Sun		Y	E	Shear annually to shape.
La 'AS'	Lavandula angustifolia 'Artic Snow'	12	10l	450 5/m2	White		Summer	600	600	Sun		Y	E	Cut back current years growth in August.
La 'HB'	Lavandula angustifolia 'Hidcote'	5	10l	450 5/m2	Purple		Summer	600	650	Sun		Y	E	Cut back current years growth in August.
La'M'	Lavandula angustifolia 'Munstead'	4	5l	450 5/m2	Purple		Summer	300 - 500	400 - 600	Sun		Y	E	Shear annually to shape.
Mct	Myrtus communis subsp. tarentina	18	5l	750 2/m2	Pink/White		Summer	1000	1000	Sun		Y	E	Shear annually to shape.
Ro'PB'	Rosmarinus officinalis 'Primley Blue'	12	10l	350 8/m2	mid blue		April/May	800	600	Sun		Y	E	If necessary cut back in late spring.
Ro'P'	Rosmarinus officinalis 'Prostratus'	7	10l	450 5/m2	Light blue		April/May	100 - 500	1000 - 1500	Sun		Y	E	If necessary cut back in late spring.
Sch	Santolina chamaecyparissus	7	10L		Yellow			500mm	500mm	Sun		Y	E	
Taxb-800	Taxus baccata (instant hedge 800)	4	10l	2plants/1m	White	Red	Winter			Sun/Shade	Y		E	Native. Grown as hedge. Prune in late summer.
Taxb-1800	Taxus baccata (instant hedge 1800)	4	10l	2plants/1m	White	Red	Winter			Sun/Shade	Y		E	Native. Grown as hedge. Prune in late summer.
Tps	Thymus pseudolanuginosus	56	9cm	150 /70m2	pale pink		June to July	100 - 250	100 - 500	Full sun		Y	E	
Tv	Thymus vulgaris	42	9 cm	150 70/m2	white pink purple		summer	100 - 500	100 - 500	Sun/		Y	E	
* climbers														
Ht'W/(screen units)	Hedera helix 'Woerner' (3000 screen)	66	-	-				3000	1200	Sun/Shade		Y	E	
trees														
	Betula nigra (multistem)	2	3-3.5m high	AS	Yellow	Green	Spring	18 m	12 m	Sun/part shade			D	
	Prunus 'Accolade' (multistem)	6	20-25 girth	AS	Pink		Spring	4000-8000mm	4000-8000mm	Sun			Deciduous	

* note: these are pregrown screens (Mobilani or similar)

rev C01 060718: planting species no amended
 rev P04 170508: planting species no amended
 rev P03 161206: planting species no amended
 rev P02 161103: planting species no amended
 rev P01 161021: preliminary issue



BBUK Studio Ltd
 unit 10, The Dove Centre
 109 Bartholomew Road
 London NW5 2BJ

t : +44 (0)207 4854649
 e : info@bbukstudio.com
 www.bbukstudio.com

project
 Post Building

planting schedule
 TPB-BBU-XXX-ZZ-Y-94-0001

date
 Oct 16

rev
 C01

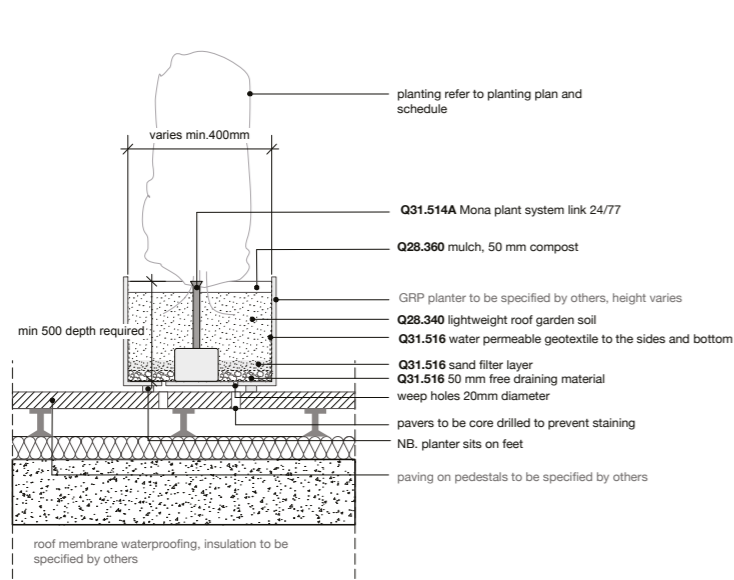
work stage
 F-G

drawn
 mhb

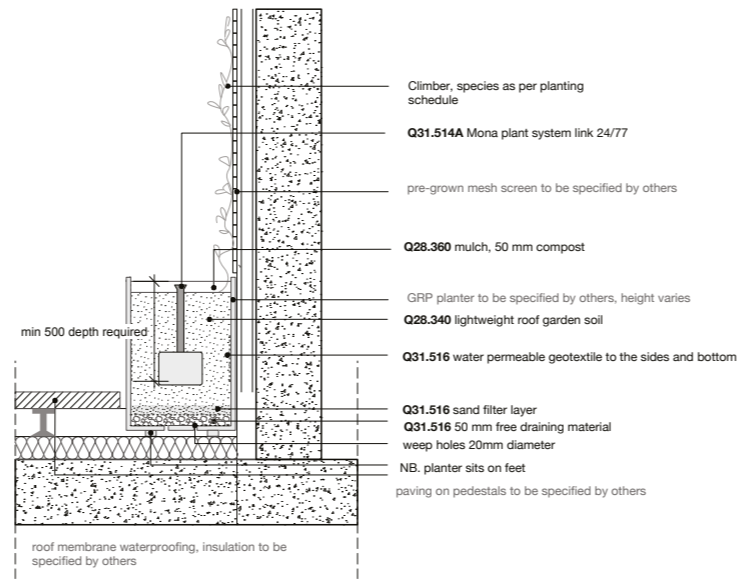
checked
 JK

Planning Condition 10 - Provision of Soft Landscaping

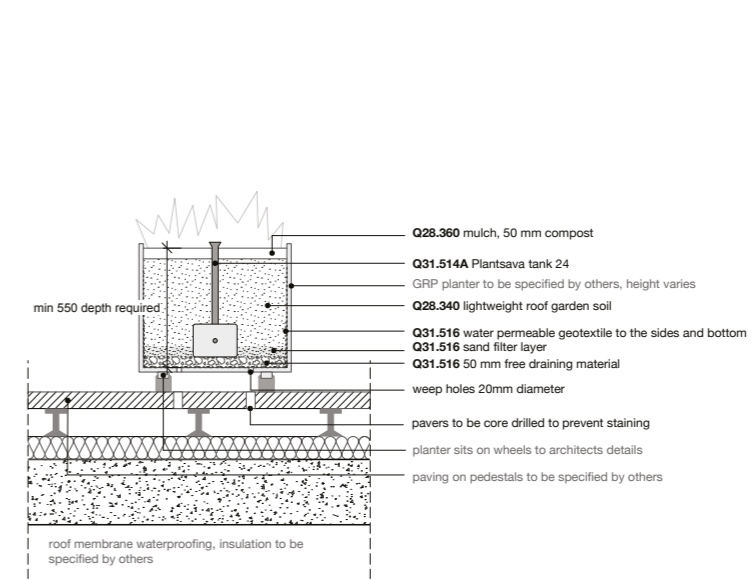
6.1 Soft landscaping proposals by BBUK



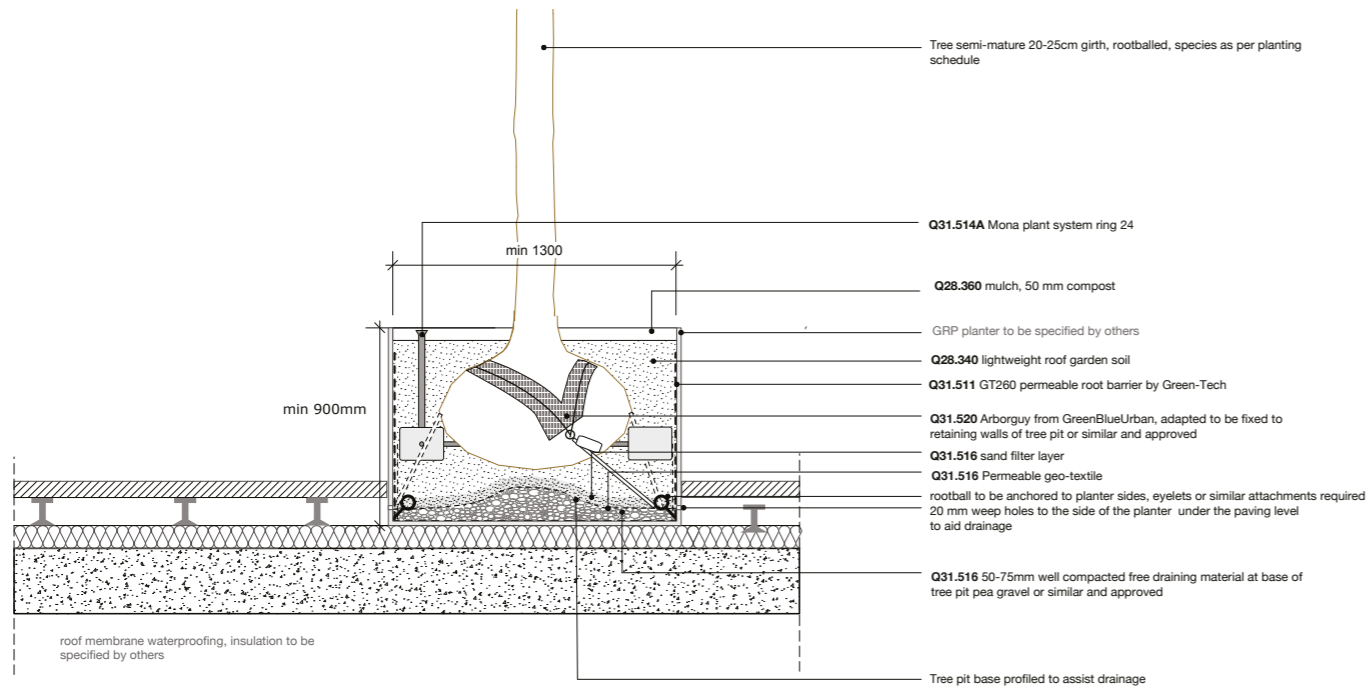
DETAIL 1.1
Section typical freestanding planter



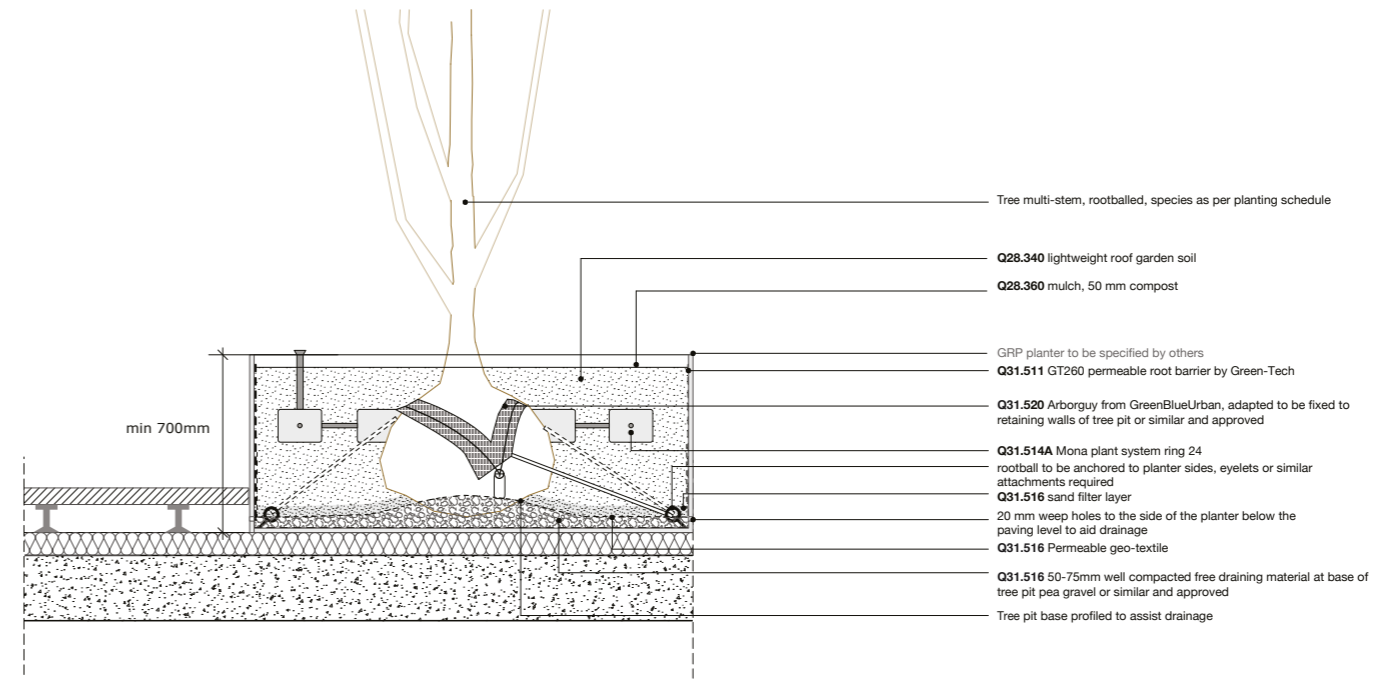
DETAIL 1.2
Section typical planter adjacent to core



DETAIL 1.3
Section typical planter on wheels



DETAIL 2.1
Section typical tree pit on Public Terrace



DETAIL 2.2
Section typical tree pit on Level 05 Terrace

rev P01 090517: Construction Issue.
Planter material noted as per architect's details, sand filter layer added, weep holes added to planters and pavers.
rev P03 090517: details 1.1 and 1.2, 2.1 and 2.2 amended
rev P02 031116: details 1.3 and 2.2 added
rev P01 211016: Preliminary Issue

FOR CONSTRUCTION

CDM :
In addition to the hazards / risks normally associated with the types of work detailed on this drawing, note the following:

1. xxxxx

Do not scale from the drawing. Any discrepancies to be reported to the landscape architect. All dimensions will be taken on site prior to ordering and construction. Copyright remains with the landscape architect. This drawing is to be read in conjunction with the specification and all other relevant drawings.

BBUK
LANDSCAPE ARCHITECTURE

BBUK Studio Ltd
unit 10, The Dove Centre
109 Bartholomew Road
London NW5 2BU

t: +44 (0)207 4854649
e: info@bbukstudio.com
www.bbukstudio.com

project
Post Building

drawing
planting details

drawing nr
TPB-BBU-XXX-XX-DT-Y-94-005

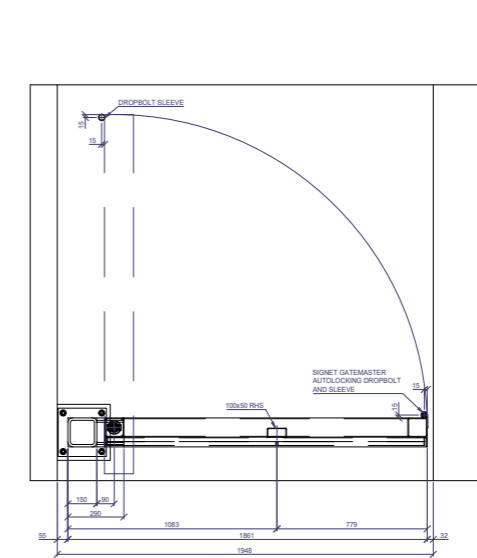
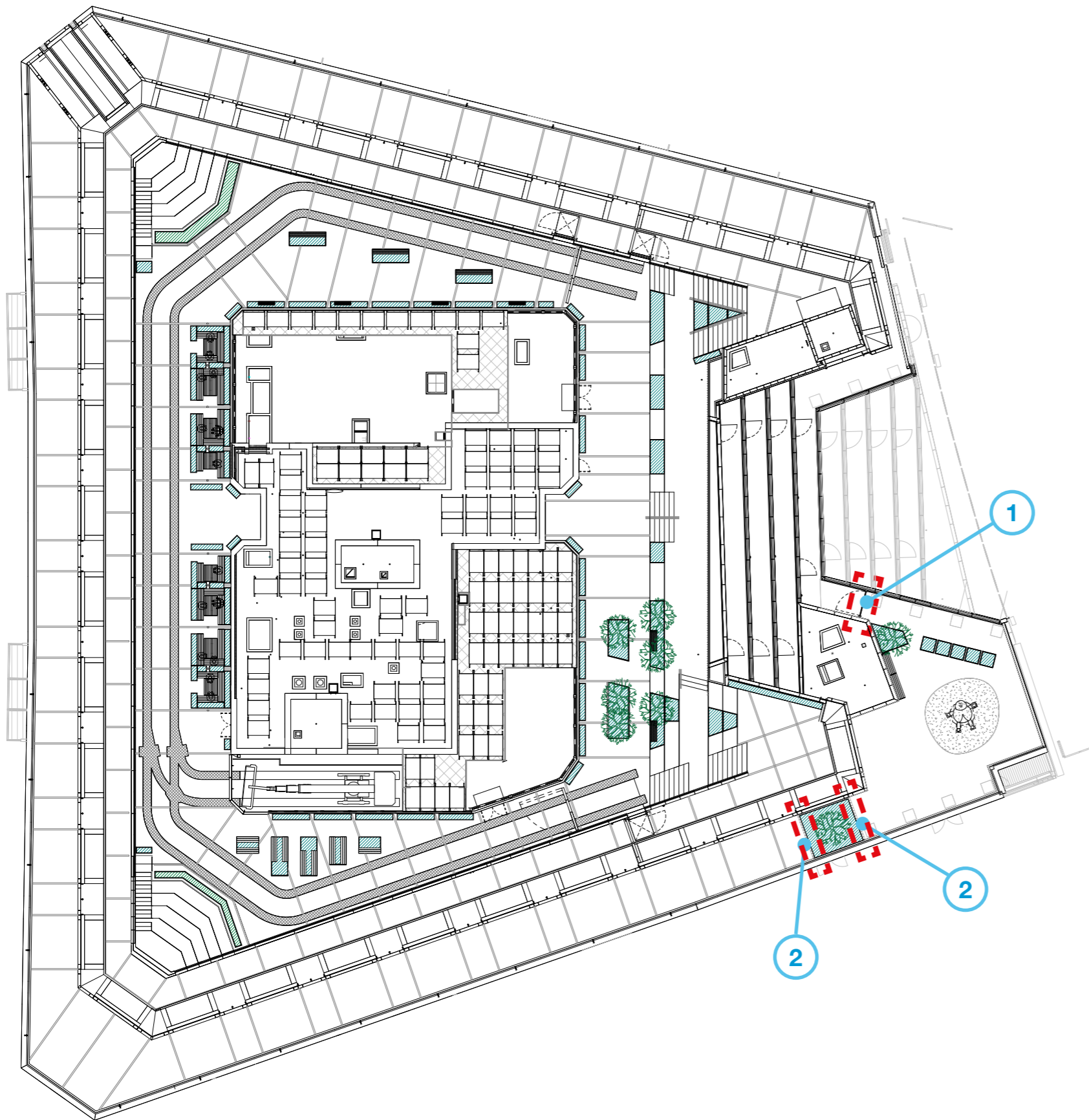
date
Oct'16

scale
1:20@A1
scale@A3

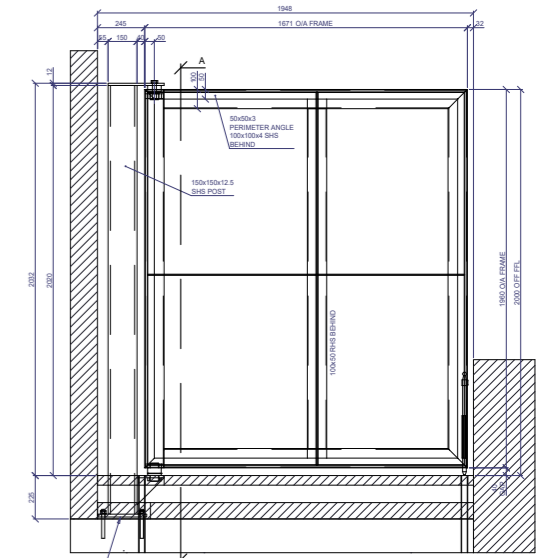
rev	work stage	drawn	checked
C01	F&G	jk	hb

Planning Condition 10 - Means of enclosure

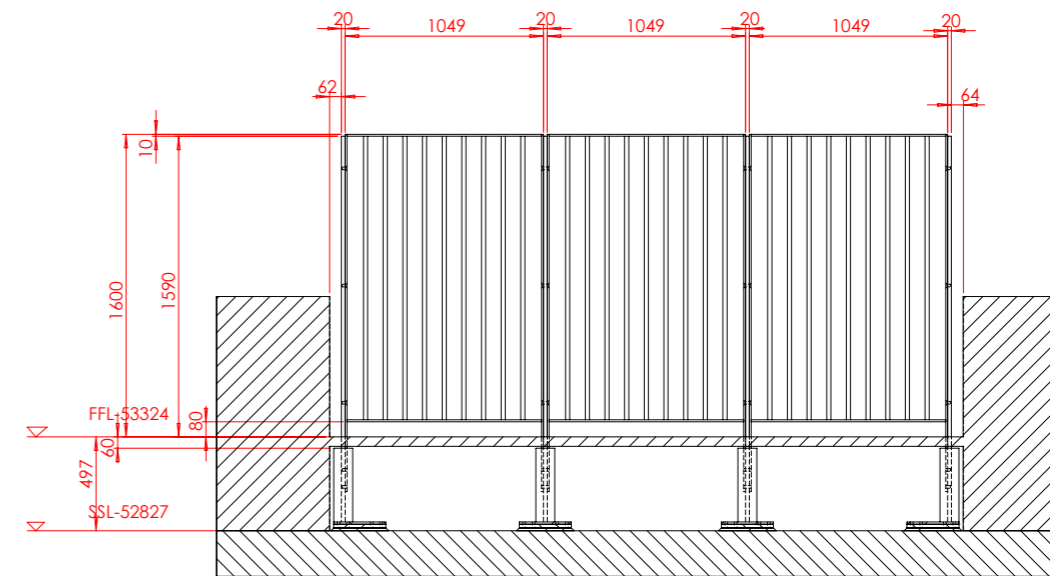
7.1 Means of enclosure at L05 (Residential L08)



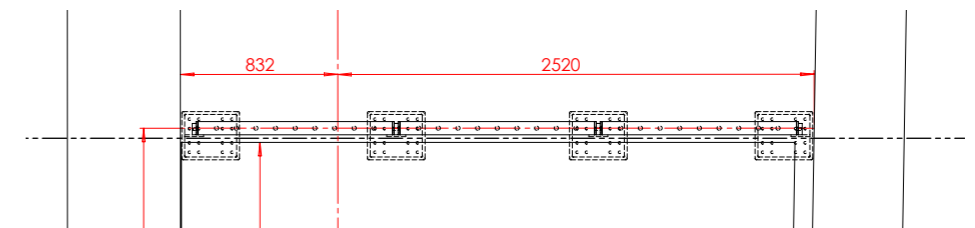
1 L05 North gate detail plan



L05 North detail elevation



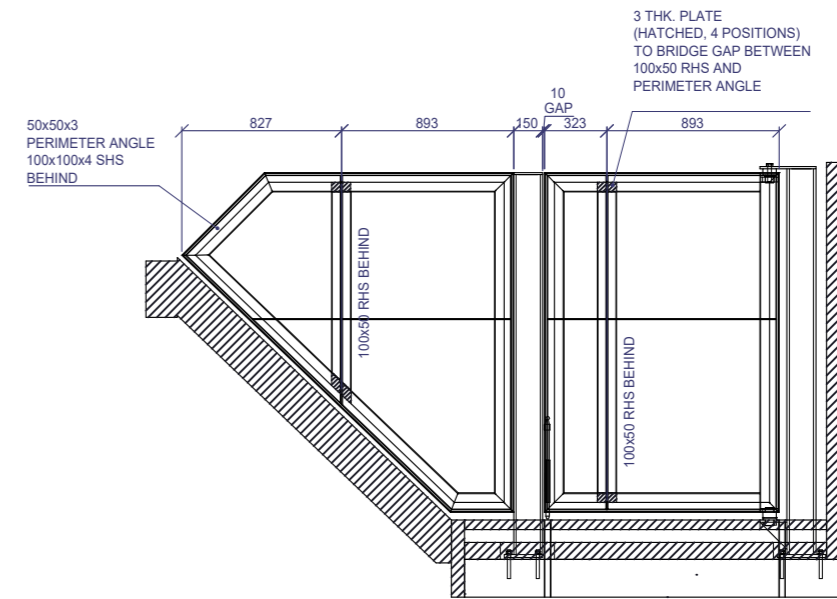
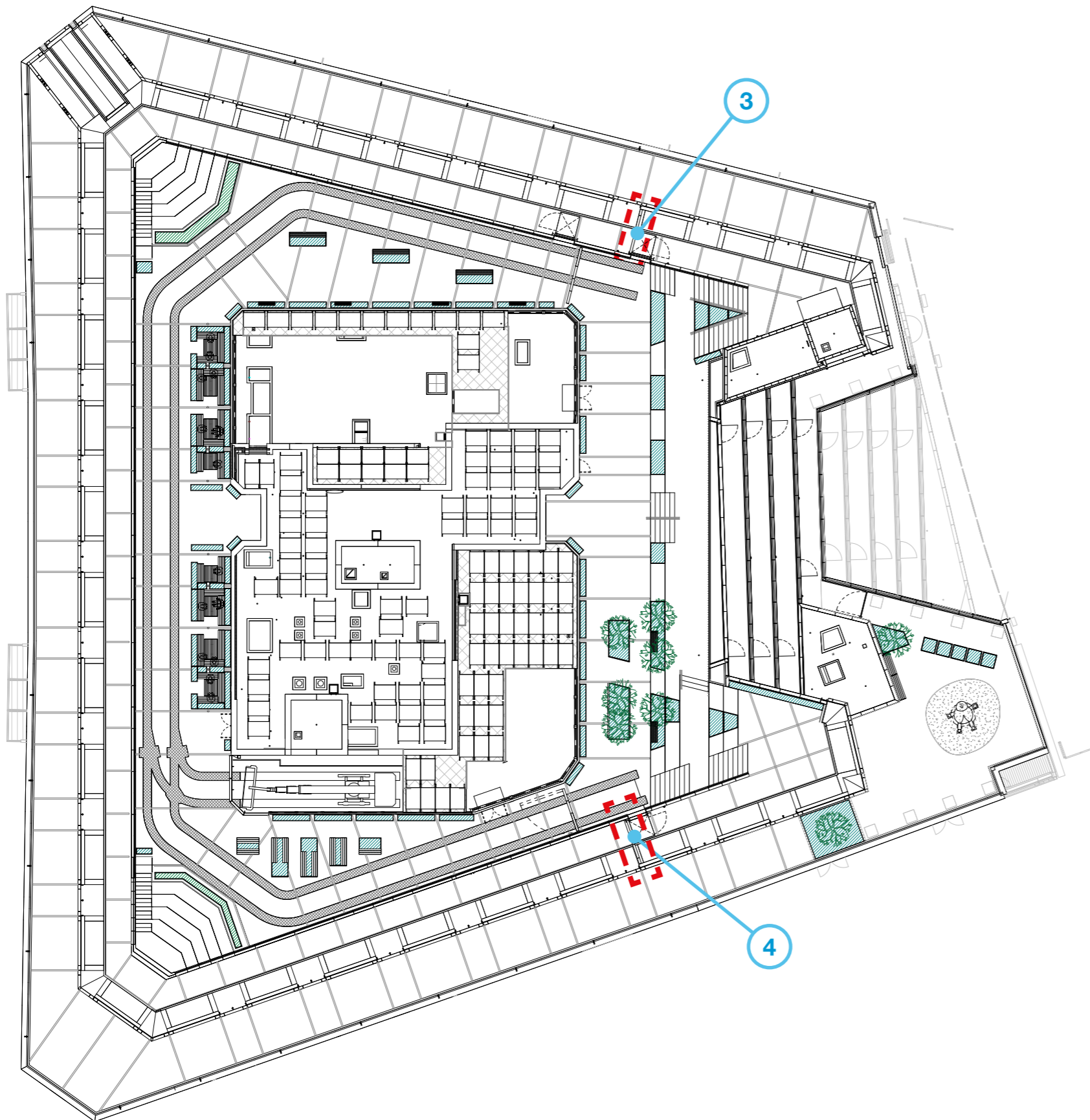
2 L05 South Railing detail elevation



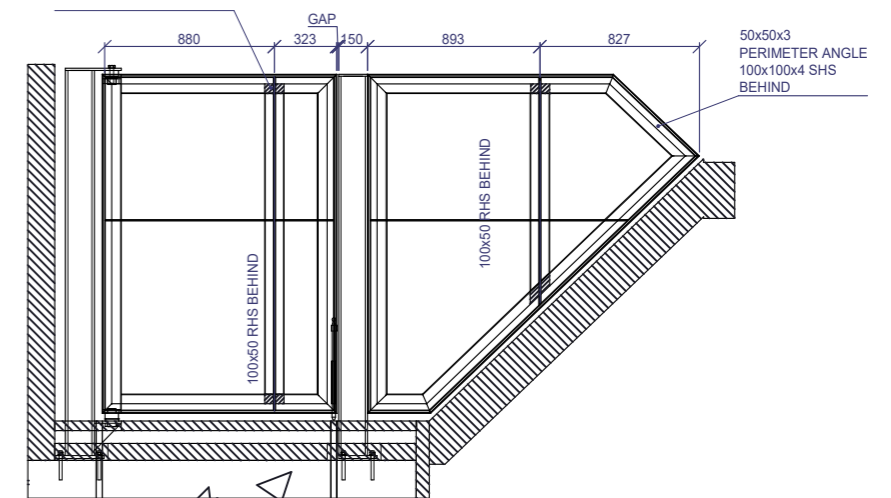
L05 South Railing detail plan

Planning Condition 10 - Means of enclosure

7.1 Means of enclosure at L09



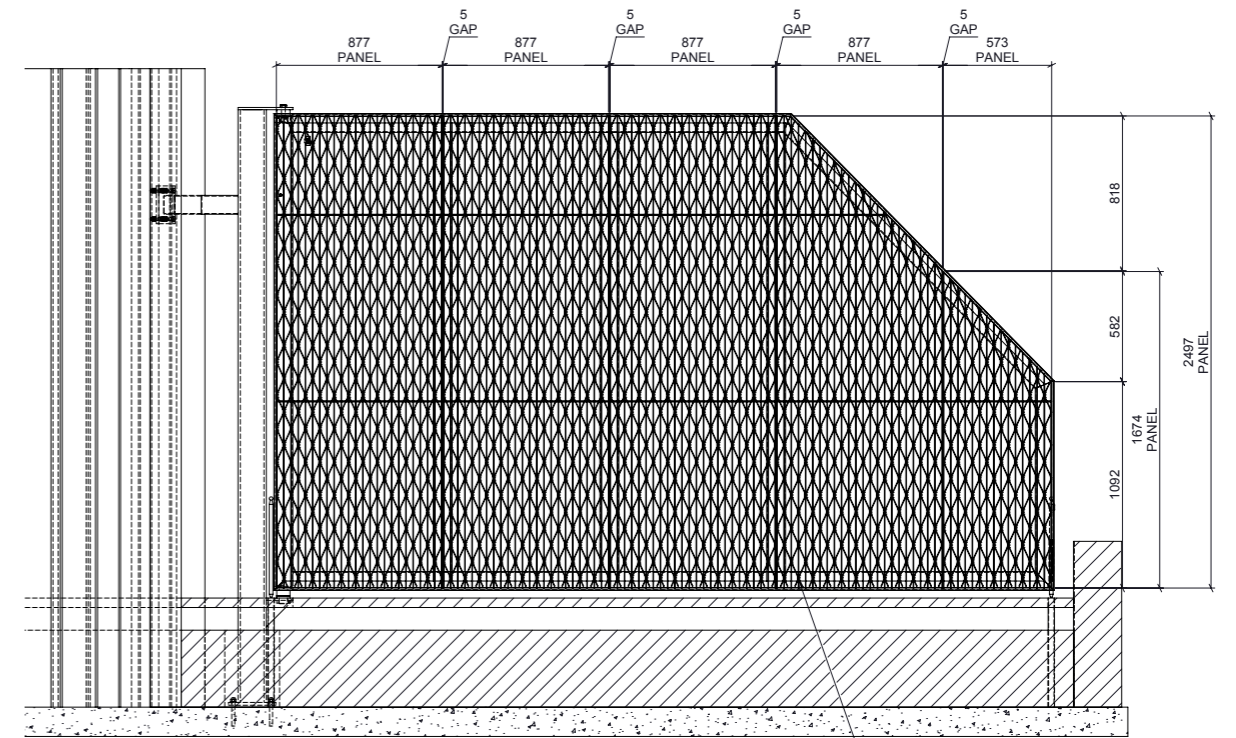
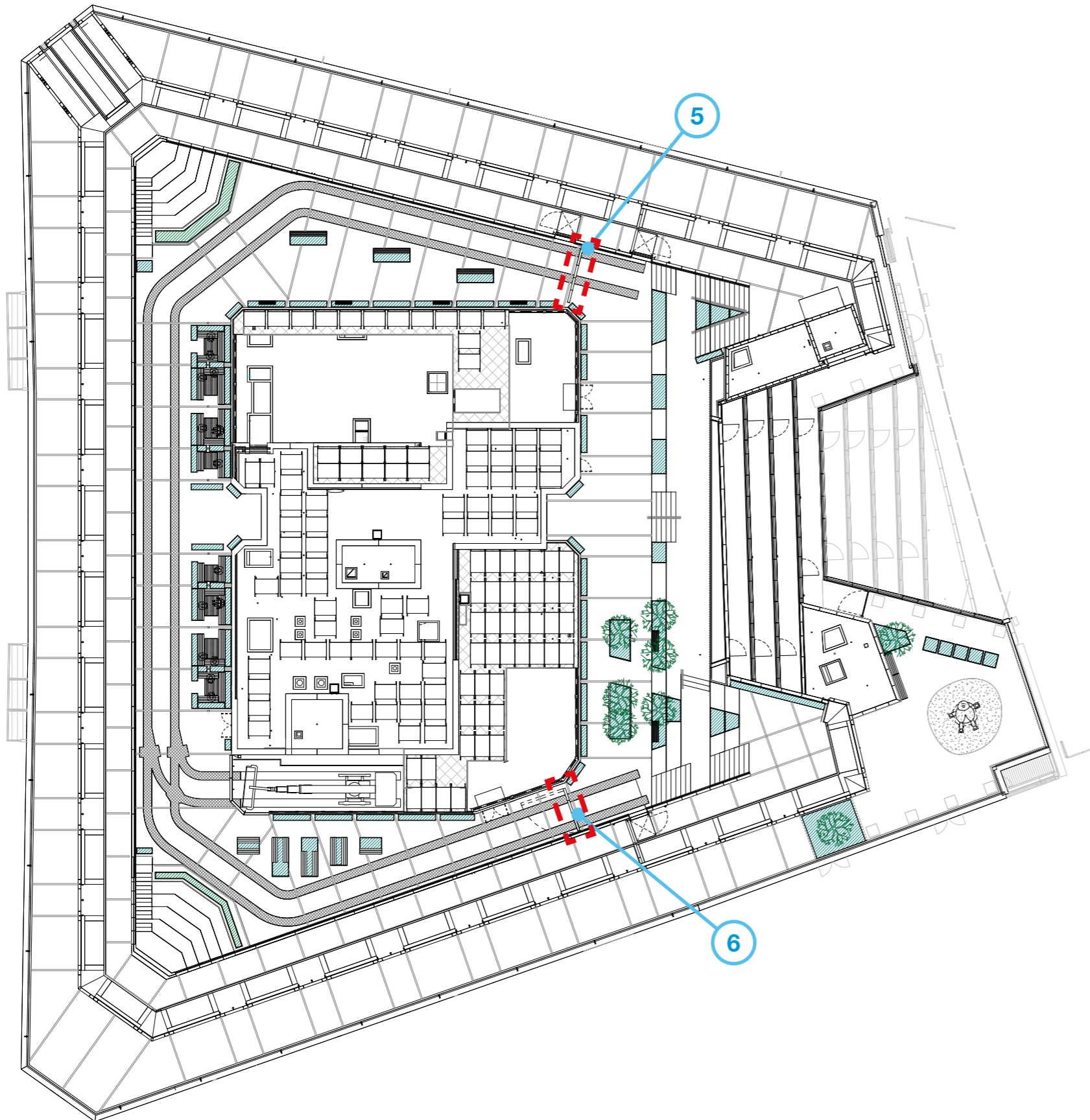
3 L09 North gate detail elevation



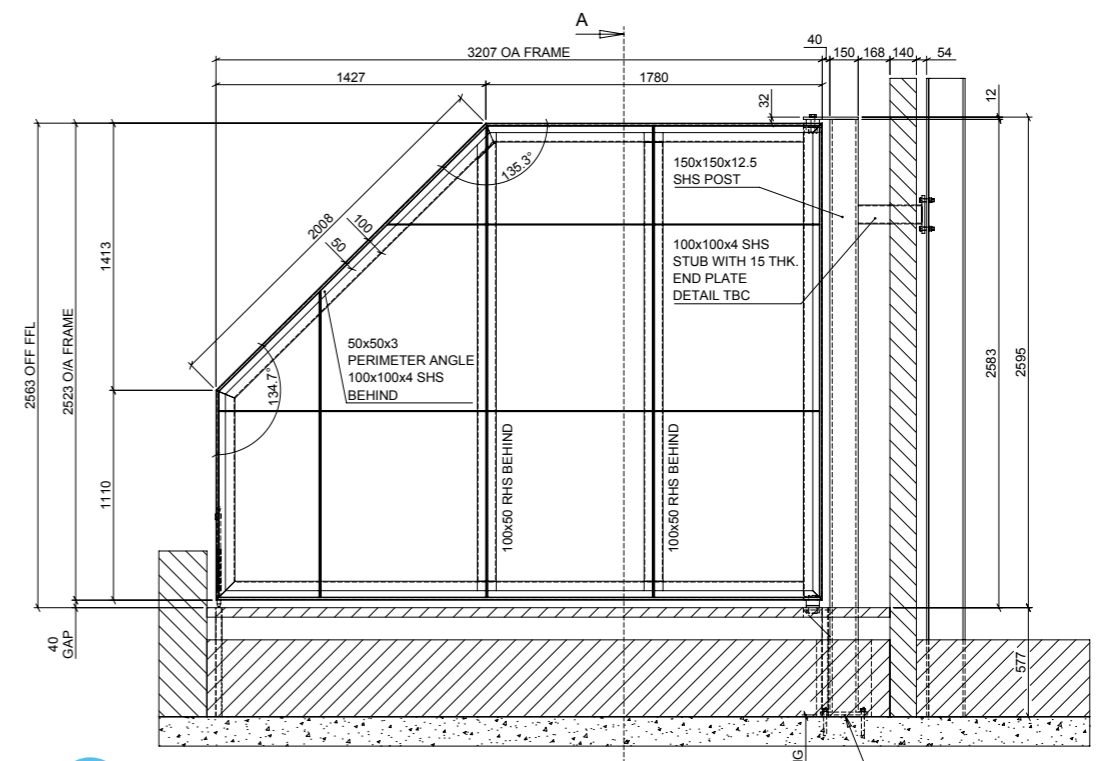
4 L09 South gate detail elevation

Planning Condition 10 - Means of enclosure

7.1 Means of enclosure at L10



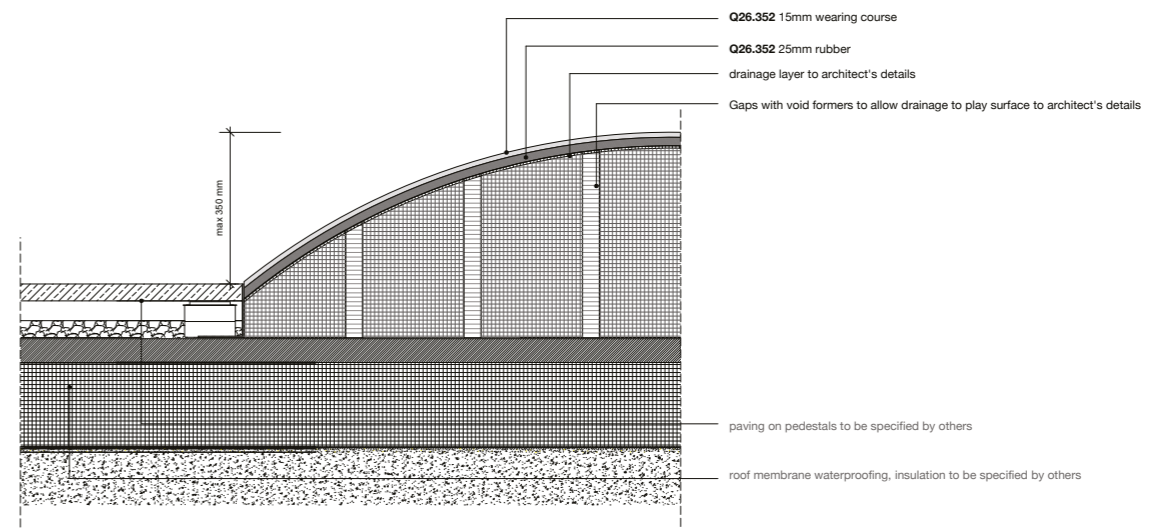
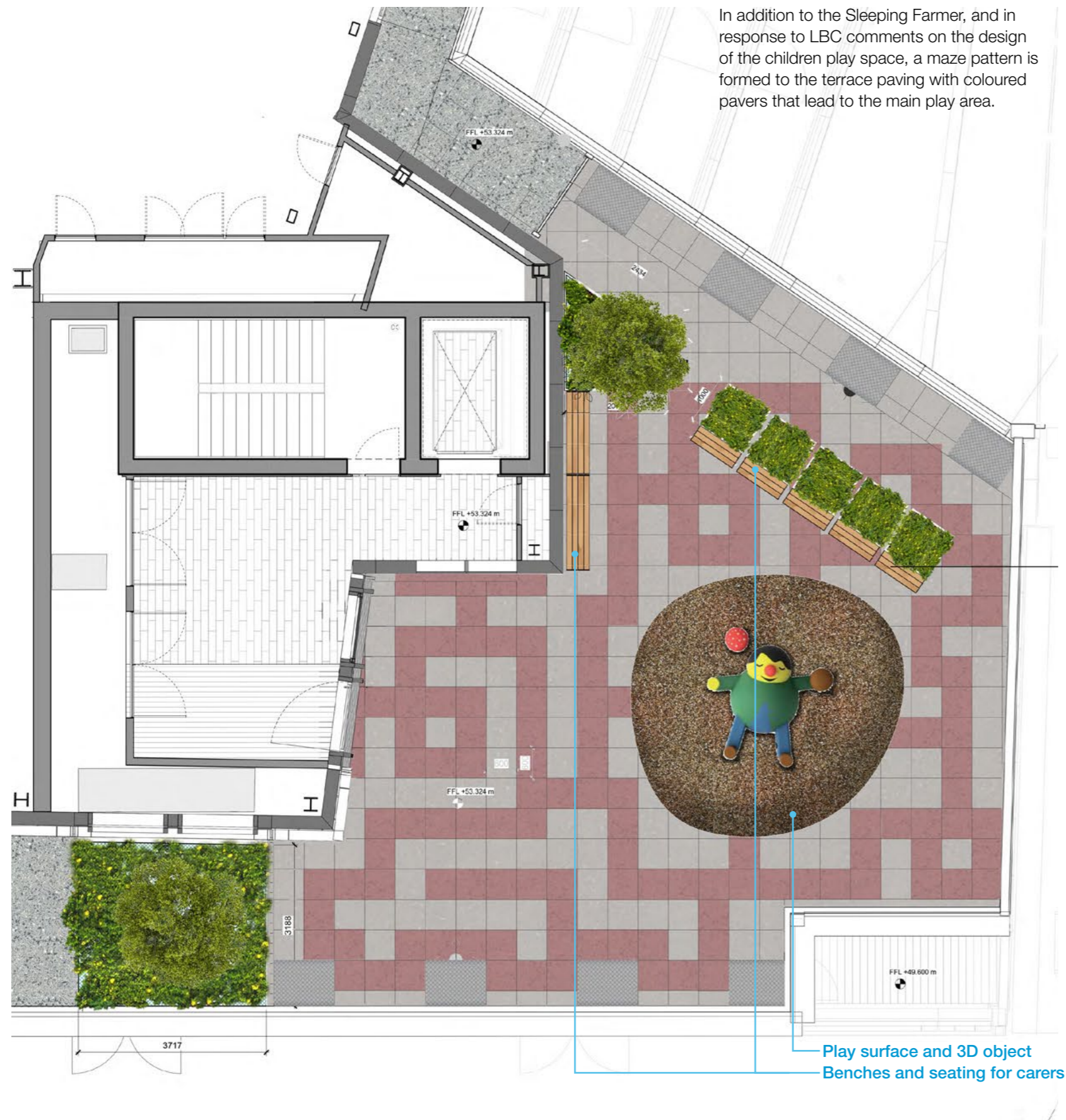
5 L10 North gate detail elevation



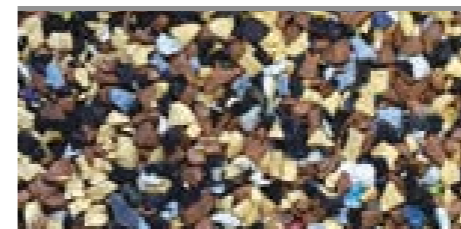
6 L10 South gate detail elevation

Planning Condition 10 - Provision of children play space

8.0 Provision of children play space and equipment



Typical buildup detail



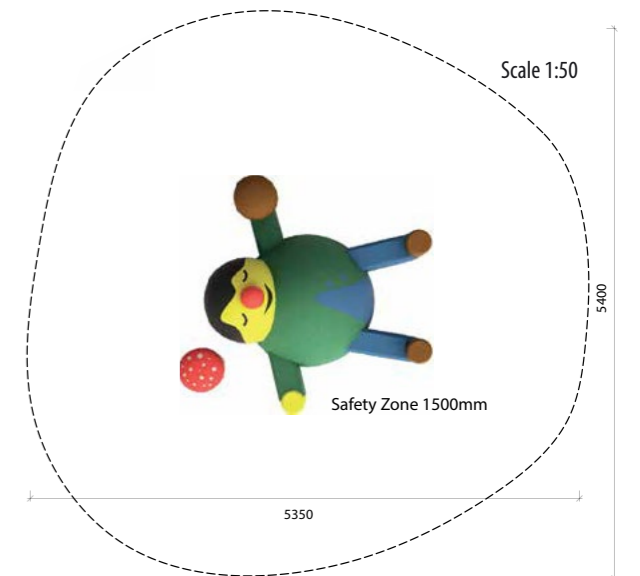
Playtop rubber surfacing 'sand' colour

The residential roof terrace provides doorstep playable space suitable for young children to the residential portion of The Post Building, and has been designed to comply with the Planning Committee report to provide 50sqm playable space for 0-5 years old.

The proposals include engaging play features and places for parents and carers to sit, talk and supervise young children play.

The main play feature is a rubber crumb mound on top of which is the Sleeping Farmer, a rubber crumb play object which creates an exciting three-dimensional environment for small children, where they can crawl, roll and climb over, ride on and create role-play opportunities. It also can be used to sit and rest on.

This proposal is carefully designed to appeal to children, to create a sense of adventure and encourage them to move, interact, imagine and have fun.



Indicative plan of rubber crumb mound and sleeping farmer 3D object



Indicative elevation of sleeping farmer 3D object