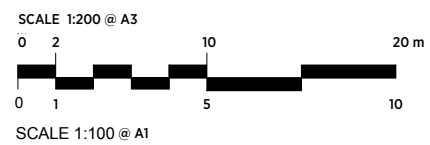


1 00 Proposed Site Plan
1:100

General notes:
This drawing is copyright of KSR architects. This drawing must be read in conjunction with the Designer's Risk Assessment, specification and all other relevant documentation and drawings. KSR architects accept no liability for any expense, loss or damage of whatsoever nature and however arising from any variation made to this drawing or in the execution of the work to which it relates which has not been referred to them and their approval obtained. Do not scale from this drawing or the digital data, only figured dimensions are to be used. For Planning refer to linear scale. Check all dimensions on site prior to carrying out any works - advise any discrepancy.

Notes/Legends



Rev	Description	Date	By
A	Revision to rear	05.11.2016	
B	KSR architects		

PLANNING			
Key Plan			

KSRARCHITECTS <small>KSR Architects LLP 14 Grosvenor Street London W1T 6DP</small>			
Project: 33 BELSIZE AVENUE		Title: Proposed Site Plan	
Date: 07/26/17	Drawn By: Author	Checked: Checker	Project Ref: 17023
Scale: As indicated @A1	Status: Planning	Drawing No: P010	Revision: A