

Metal stud partition system fixed between slabs to suit span  
 1no. 15mm acoustic plasterboard to each side  
 3mm skim coat plaster British Gypsum ThistlePro DuraFinish or equivalent approved  
 Fire rating: FR60

Metal stud partition system fixed between slabs to suit span  
 1no. 12.5mm acoustic plasterboard to each side  
 3mm skim coat plaster British Gypsum ThistlePro DuraFinish or equivalent approved, Tile finish to WC side  
 Fire rating: FR60

STORE DOOR, G-10-D-01  
 Fire Rating: FD30S  
 Acoustic Rating: N/A  
 Handle Type: Lever  
 Lock Type: N/A  
 Closer Type: N/A

ACCESSIBLE WC DOOR, G-09-D-01  
 Fire Rating: N/A  
 Acoustic Rating: N/A  
 Handle Type: Lever  
 Lock Type: Indicator  
 Closer Type: Surfaced Fixed  
 Other: Pull Rail to be Fixed to Inside of Door Leaf  
 Door Undercut.

FIRE RESISTING SCREEN SECURITY DOOR, G-11-D-01  
 Fire Rating: N/A  
 Acoustic Rating: N/A  
 Handle Type: Push/Flush Pull  
 Lock Type: Access Control  
 Closer Type: Hold open magnets and floor spring  
 Other: Push To Exit Button on Stair Side

Multicoat plaster to existing wall  
 NBS M20/220

New Brass Handrail  
 NBS L30/570

Metal stair with carpet finish, balustrades and screen  
 NBS L30/254

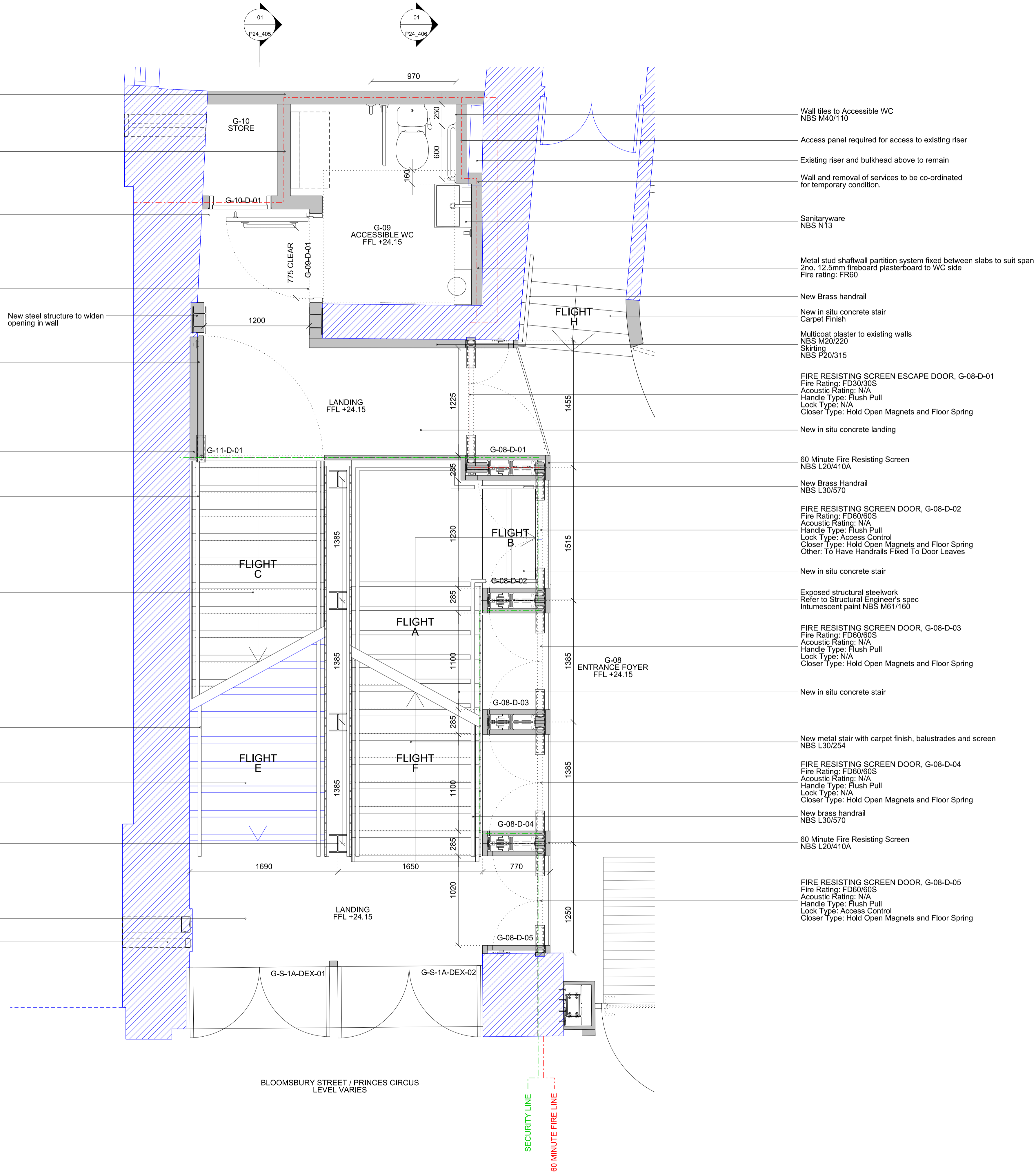
New Brass Handrail  
 NBS L30/570

Existing concrete stair  
 Treads made up to create equal risers to proposed ground floor landing level  
 Carpet to match existing

Exposed structural steelwork  
 Intumescent paint NBS M61/160

In situ concrete landing

Builders work hole for new external louvre.



Wall tiles to Accessible WC  
 NBS M40/110

Access panel required for access to existing riser

Existing riser and bulkhead above to remain  
 Wall and removal of services to be co-ordinated for temporary condition.

Sanitaryware  
 NBS N13

Metal stud shaftwall partition system fixed between slabs to suit span  
 2no. 12.5mm fireboard plasterboard to WC side  
 Fire rating: FR60

New Brass handrail

New in situ concrete stair  
 Carpet Finish

Multicoat plaster to existing walls  
 NBS M20/220  
 Skirting  
 NBS P20/315

FIRE RESISTING SCREEN ESCAPE DOOR, G-08-D-01  
 Fire Rating: FD30/30S  
 Acoustic Rating: N/A  
 Handle Type: Flush Pull  
 Lock Type: N/A  
 Closer Type: Hold Open Magnets and Floor Spring

New in situ concrete landing

60 Minute Fire Resisting Screen  
 NBS L20/410A

New Brass Handrail  
 NBS L30/570

FIRE RESISTING SCREEN DOOR, G-08-D-02  
 Fire Rating: FD60/60S  
 Acoustic Rating: N/A  
 Handle Type: Flush Pull  
 Lock Type: Access Control  
 Closer Type: Hold Open Magnets and Floor Spring  
 Other: To Have Handrails Fixed To Door Leaves

New in situ concrete stair

Exposed structural steelwork  
 Refer to Structural Engineer's spec  
 Intumescent paint NBS M61/160

FIRE RESISTING SCREEN DOOR, G-08-D-03  
 Fire Rating: FD60/60S  
 Acoustic Rating: N/A  
 Handle Type: Flush Pull  
 Lock Type: N/A  
 Closer Type: Hold Open Magnets and Floor Spring

New in situ concrete stair

New metal stair with carpet finish, balustrades and screen  
 NBS L30/254

FIRE RESISTING SCREEN DOOR, G-08-D-04  
 Fire Rating: FD60/60S  
 Acoustic Rating: N/A  
 Handle Type: Flush Pull  
 Lock Type: N/A  
 Closer Type: Hold Open Magnets and Floor Spring

New brass handrail  
 NBS L30/570

60 Minute Fire Resisting Screen  
 NBS L20/410A

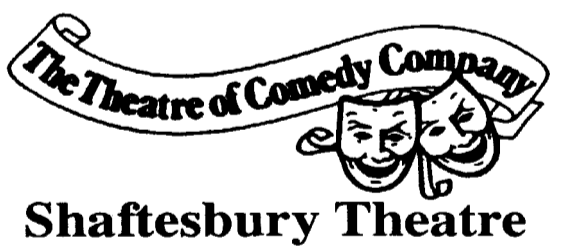
FIRE RESISTING SCREEN DOOR, G-08-D-05  
 Fire Rating: FD60/60S  
 Acoustic Rating: N/A  
 Handle Type: Flush Pull  
 Lock Type: Access Control  
 Closer Type: Hold Open Magnets and Floor Spring

Notes

KEY

Existing Building

Proposed



**BENNETTS ASSOCIATES**

1 Rawstorne Place, London EC1V 7NL  
 T +44(0)207 5203300 • www.bennettsassociates.com  
 E mail@bennettsassociates.com

For Bennetts Associates' electronic information issue disclaimer -  
 www.bennettsassociates.com/informationaldisclaimer

Project 1702 Project No. 1702

**Shaftesbury Theatre**  
 The Theatre of Comedy Company

Drawing Title  
 Stairs and Lifts  
 Stair 01  
 Ground Floor Plan

Drawing Number  
 1702\_P24\_403

Scale @ A3 1 : 50  
 Scale @ A1 1 : 25  
 Revision Date  
 181031

YY MM DD