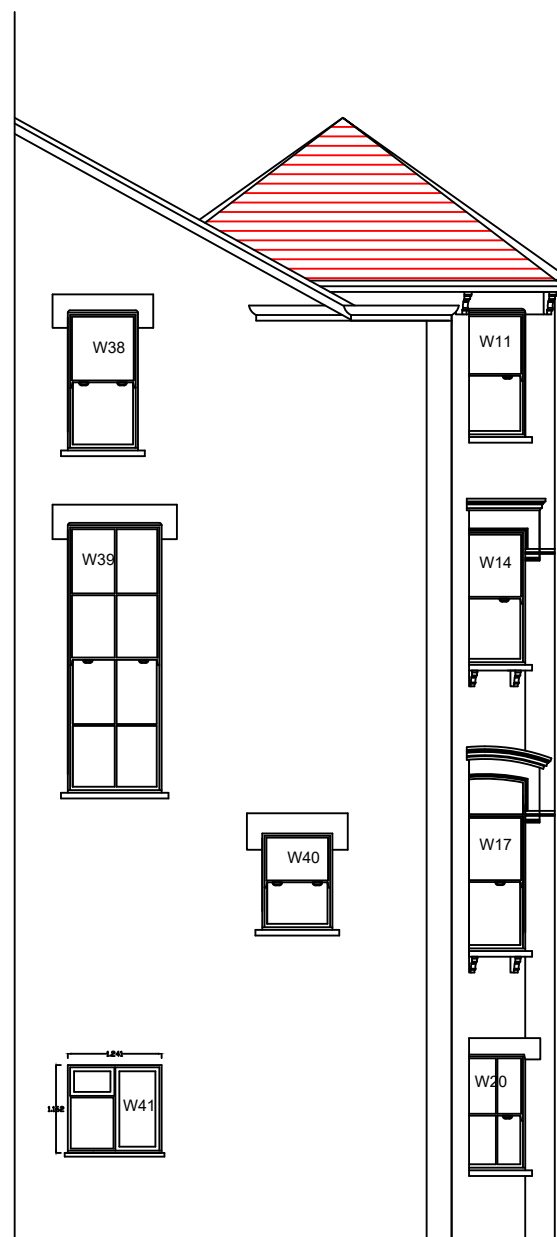


PROPOSED ARE TIMBER WINDOWS LIKE FOR LIKE SLIMLITE DOUBLE GLAZED TO MATCH EXISTING

Proposed are replacement for single glazed sash window to like for like timber slim-lite Double glazed sash window.

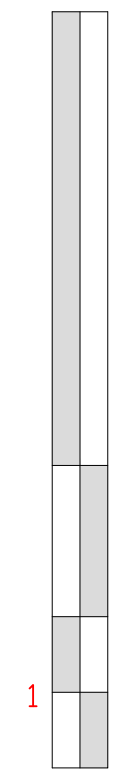


Proposed are replacement for single glazed sash window to like for like timber slim-lite Double glazed sash window.

SIDE ELEVATION
(Proposed)

Notes:

10 Meter



1:100



EMPLOYER'S AGENTS & PROJECT MANAGERS
UNIT A COURT HOUSE, 11A HIGH STREET
BARNET EN5 5UJ
TEL: 020 8446 5537
E-MAIL: Planning@walkercc.co.uk

TITLE
PROPOSED ELEVATIONS

PROJECT
141 West End lane

CLIENT
GENESIS HOUSING ASSOCIATION / KIER

SCALE: AS IDENTIFIED
CAD FILE: -
DATE: 17.10.18
DRAWN BY: VRM
CHECKED:

PROJECT NO.	DRAWING NO.	REVISION
4277	4277/WM/04	0