

T.O. PLANT SCREEN  
41525

ROOF LEVEL  
38615

SIXTH FLOOR  
34485

FIFTH FLOOR  
30795

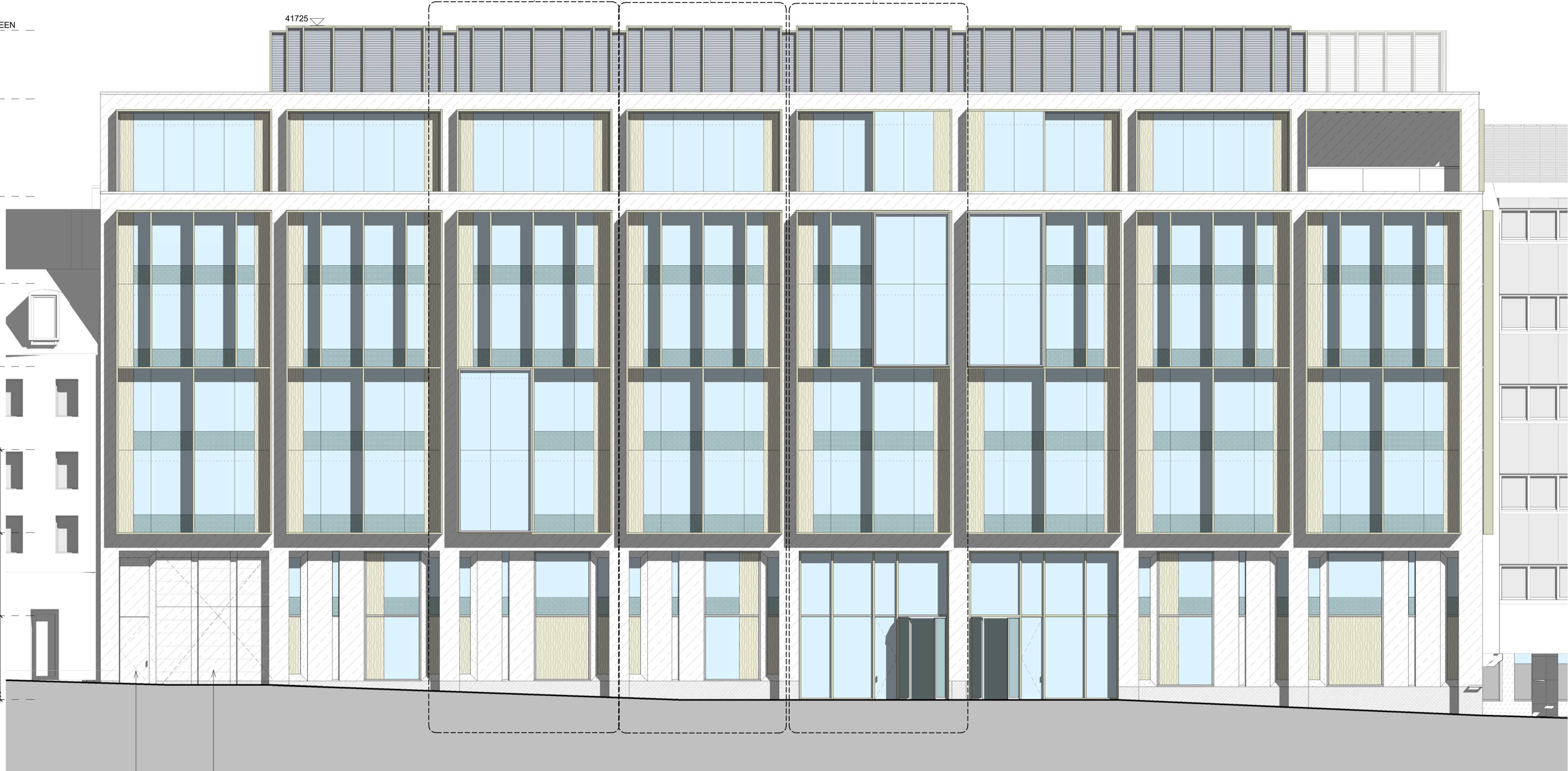
FOURTH FLOOR  
27275

THIRD FLOOR  
23755

SECOND FLOOR  
20235

FIRST FLOOR  
16715

GROUND FLOOR  
13165

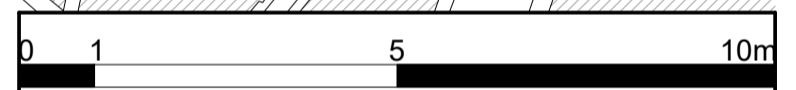
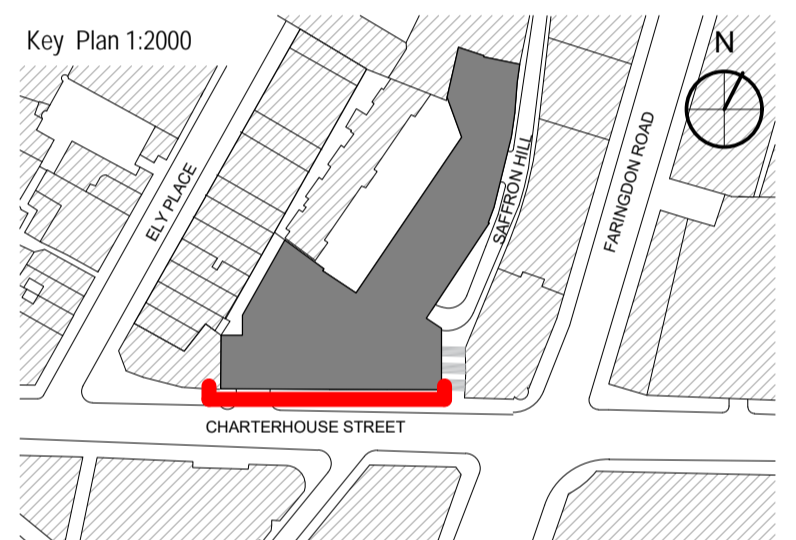


STONE PANEL FACED EXIT DOOR

STONE FACED MOTORISED DOOR SYSTEM

MATERIAL KEY:

- PORTLAND BOWERS ROACH STONE
- PORTLAND BOWERS BASE BED STONE
- GLAZING PANEL
- TRANSLUCENT STONE PANEL
- GRANITE
- CERAMIC STONE
- INSULATED RENDER
- ANODIZED LOUVRES
- PRIVACY FRIT
- ANODIZED ALUMINIUM CLADDING COLOUR TBC
- ANODIZED ALUMINIUM CLADDING COLOUR TBC



DO NOT SCALE ANY DIMENSIONS OFF THIS DRAWING. ANY DISCREPANCIES BETWEEN THIS DRAWING AND OTHER INFORMATION ARE TO BE REFERRED TO MCM ARCHITECTURE LIMITED. WHERE THE DRAWING RELATES TO AN EXISTING BUILDING OR COMPLETED CONSTRUCTION THE CONTRACTOR IS RESPONSIBLE FOR CHECKING THAT THERE IS NO CONFLICT BETWEEN ACTUAL BUILDING DIMENSIONS AND DRAWING DIMENSIONS. IN THE EVENT OF DISCREPANCIES BETWEEN THIS DRAWING AND SUBCONTRACTOR'S APPROVED WORKING DRAWINGS FOR RELEVANT BUILDING COMPONENTS, THE SUBCONTRACTOR'S DRAWING SHALL TAKE PRECEDENCE. ANY CONFLICTS ARISING OUT OF INFORMATION AS NOTED ABOVE MUST BE REPORTED IMMEDIATELY TO MCM ARCHITECTURE LIMITED. THIS DRAWING IS THE COPYRIGHT OF MCM ARCHITECTURE LIMITED. ALL DIMENSIONS ARE IN MILLIMETRES UNLESS OTHERWISE STATED.

P3	24.11.17	ISSUED FOR PLANNING	SP
P2	03.11.17	ISSUED FOR PLANNING	SP
P1	10.08.17	ISSUED FOR PLANNING	CS
REV	DATE	PURPOSE OF ISSUE	

CLIENT | AA & DB

PROJECT | 17 CHARTERHOUSE ST.

DRAWING | PROPOSED CHARTERHOUSE STREET ELEVATION

SCALE | 1:100 @A1  
1:200 @A3

DRAWN | CS

CHECKED | NA

DRAWING NO. | P17-059

role series floor type no. | A-07-EVE-03

rev. | P3

STATUS  PRELIMINARY  
 TENDER  
 CONSTRUCTION  
 AS BUILT

**MCM**  
MCM Architecture Limited  
71 Hopton Street London SE1 9LR  
T 020 7902 0900  
www.mcm-uk.com