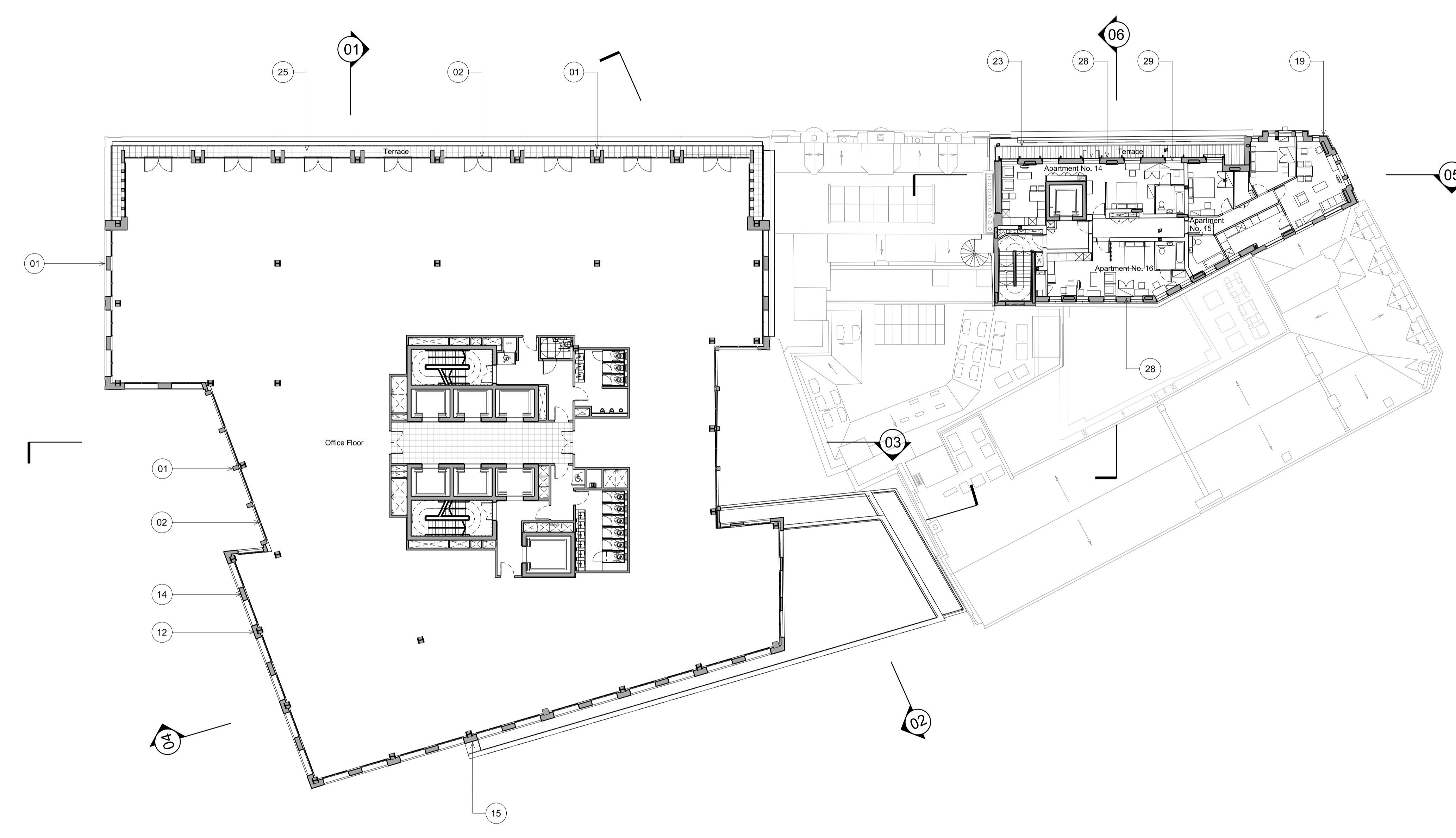


Disclaimer
Do not scale from this drawing.
Check all dimensions on site before fabrication or setting out.
This document is copyright and may not be reproduced without permission of the owner.

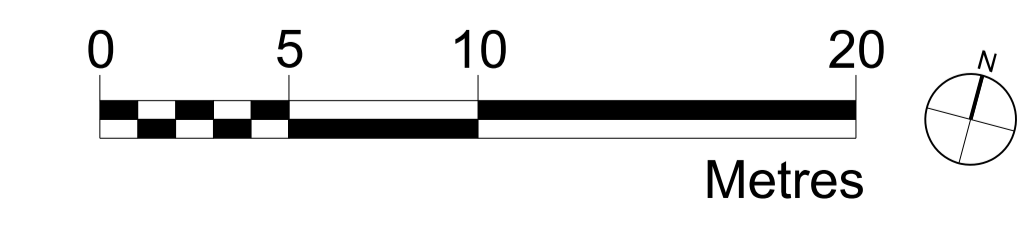
- Key
- 01 Precast masonry element, Pale colour
 - 02 Double glazed unit with aluminium frame
 - 03 Bronze coloured aluminium window frame
 - 04 Bronze coloured aluminium spandrel
 - 05 Precast masonry panel with cast in relief, Pale colour
 - 06 Granite plinth
 - 07 Decorative metalwork screening panel
 - 08 Decorative metalwork balustrade
 - 09 Decorative metalwork panel
 - 10 Retail glazing
 - 11 Retail signage zone
 - 12 Brick, Dark Grey colour
 - 13 Precast lintel
 - 14 Brick textured panel, Dark grey colour
 - 15 Brick, Varied warm colour palette
 - 16 Vaulted soffit
 - 17 Dark grey louvres with concealed framing and close spacing for ventilation.
 - 18 Loading bay door, Bronze colour aluminium vertical louvres
 - 19 Red brick to match existing
 - 20 Buff brick to match existing
 - 21 Double glazed windows
 - 22 Precast masonry element, Colour to match existing
 - 23 Metal balustrade, Dark grey colour
 - 24 Grey coloured metal
 - 25 Concrete paviors
 - 26 Small scale concrete sett paving
 - 27 Large format concrete paviors
 - 28 Dark Brick
 - 29 Tilt and turn double glazed windows

03	Planning	25.04.17	RPP	RPP
02	Planning	20.04.17	RPP	RPP
01	Planning	31.03.17	RPP	RPP
00	Planning	31.01.17	RPP	RPP
Rev	Notes	Date	Dwn	Iss

Consultants
Structural Engineer: Davies Maguire
M&E Engineer: GDM Partnership
Cost Consultant: Currie & Brown
Planning Consultant: Gerald Eve



01 Level 06
1:200



Robin Partington & Partners
Castlewood
35 New Oxford Street
London
WC1A 1DG
+44 20 7419 3500
mail@rplondon.com
www.rplondon.com

Client
Royal London Asset Management

Project
**Castlewood House & Medius House
London, WC1A**

Drawing Title
**General Arrangement
Proposed Plan
Level 06**

Scale	Drawn By	Issued By
1:200 @ A1	RPP	RPP
PLANNING		
Project No.	Drawing No.	Revision
15023	A_PL_P_106	03

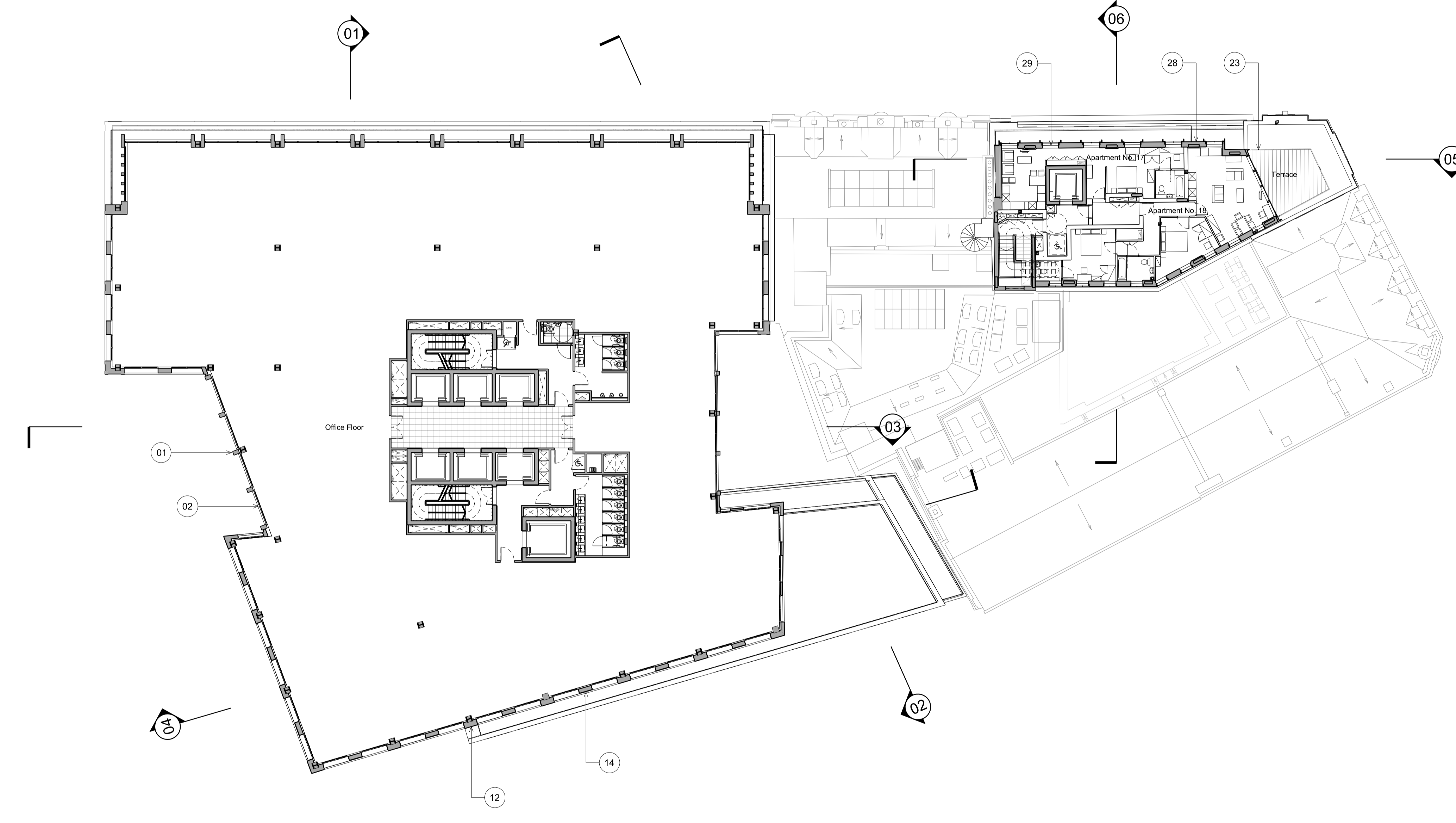
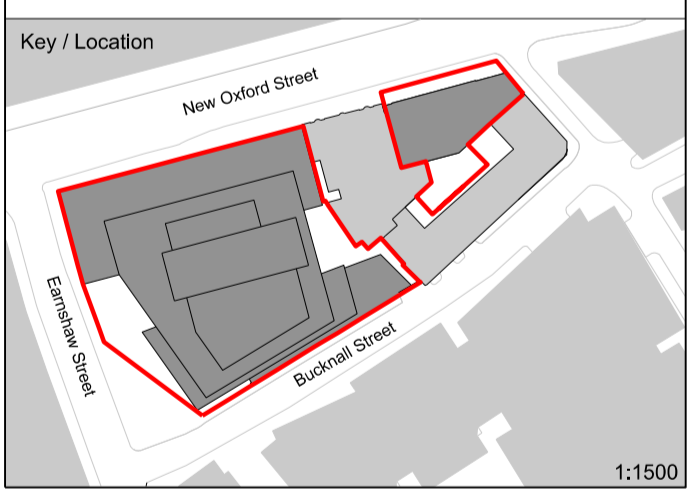
Date Last Saved: Tuesday, April 25, 2017

Disclaimer
Do not scale from this drawing.
Check all dimensions on site before fabrication or setting out.
This document is copyright and may not be reproduced without permission of the owner.

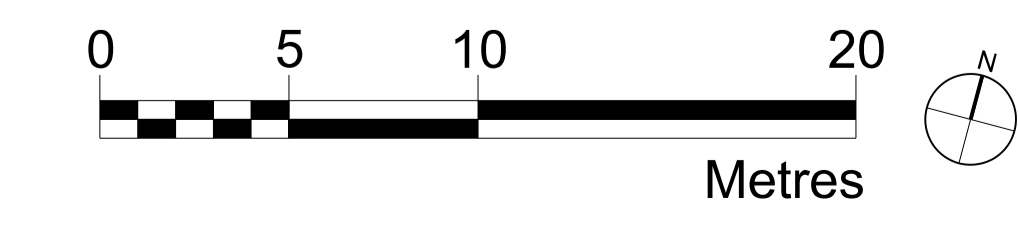
- Key
- 01 Precast masonry element, Pale colour
 - 02 Double glazed unit with aluminium frame
 - 03 Bronze coloured aluminium window frame
 - 04 Bronze coloured aluminium spandrel
 - 05 Precast masonry panel with cast in relief. Pale colour
 - 06 Granite plinth
 - 07 Decorative metalwork screening panel
 - 08 Decorative metalwork balustrade
 - 09 Decorative metalwork panel
 - 10 Retail glazing
 - 11 Retail signage zone
 - 12 Brick, Dark Grey colour
 - 13 Precast lintel
 - 14 Brick textured panel, Dark grey colour
 - 15 Brick, Varied warm colour palette
 - 16 Vaulted soffit
 - 17 Dark grey louvres with concealed framing and close spacing for ventilation.
 - 18 Loading bay door, Bronze colour aluminium vertical louvres
 - 19 Red brick to match existing
 - 20 Buff brick to match existing
 - 21 Double glazed windows
 - 22 Precast masonry element, Colour to match existing
 - 23 Metal balustrade, Dark grey colour
 - 24 Grey coloured metal
 - 25 Concrete paviors
 - 26 Small scale concrete sett paving
 - 27 Large format concrete paviors
 - 28 Dark Brick
 - 29 Tilt and turn double glazed windows

03	Planning	25.04.17	RPP	RPP
02	Planning	20.04.17	RPP	RPP
01	Planning	31.03.17	RPP	RPP
00	Planning	31.01.17	RPP	RPP
Rev	Notes	Date	Dwn	Iss

Consultants
Structural Engineer: Davies Maguire
M&E Engineer: GDM Partnership
Cost Consultant: Currie & Brown
Planning Consultant: Gerald Eve



01 Level 07
1:200



Robin Partington & Partners
Castlewood
35 New Oxford Street
London
WC1A 1DG
+44 20 7419 3500
mail@rplondon.com
www.rplondon.com

Client
Royal London Asset Management

Project
**Castlewood House & Medius House
London, WC1A**

Drawing Title
**General Arrangement
Proposed Plan
Level 07**

Scale	Drawn By	Issued By
1:200 @ A1	RPP	RPP
PLANNING		
Project No.	Drawing No.	Revision
15023	A_PL_P_107	03

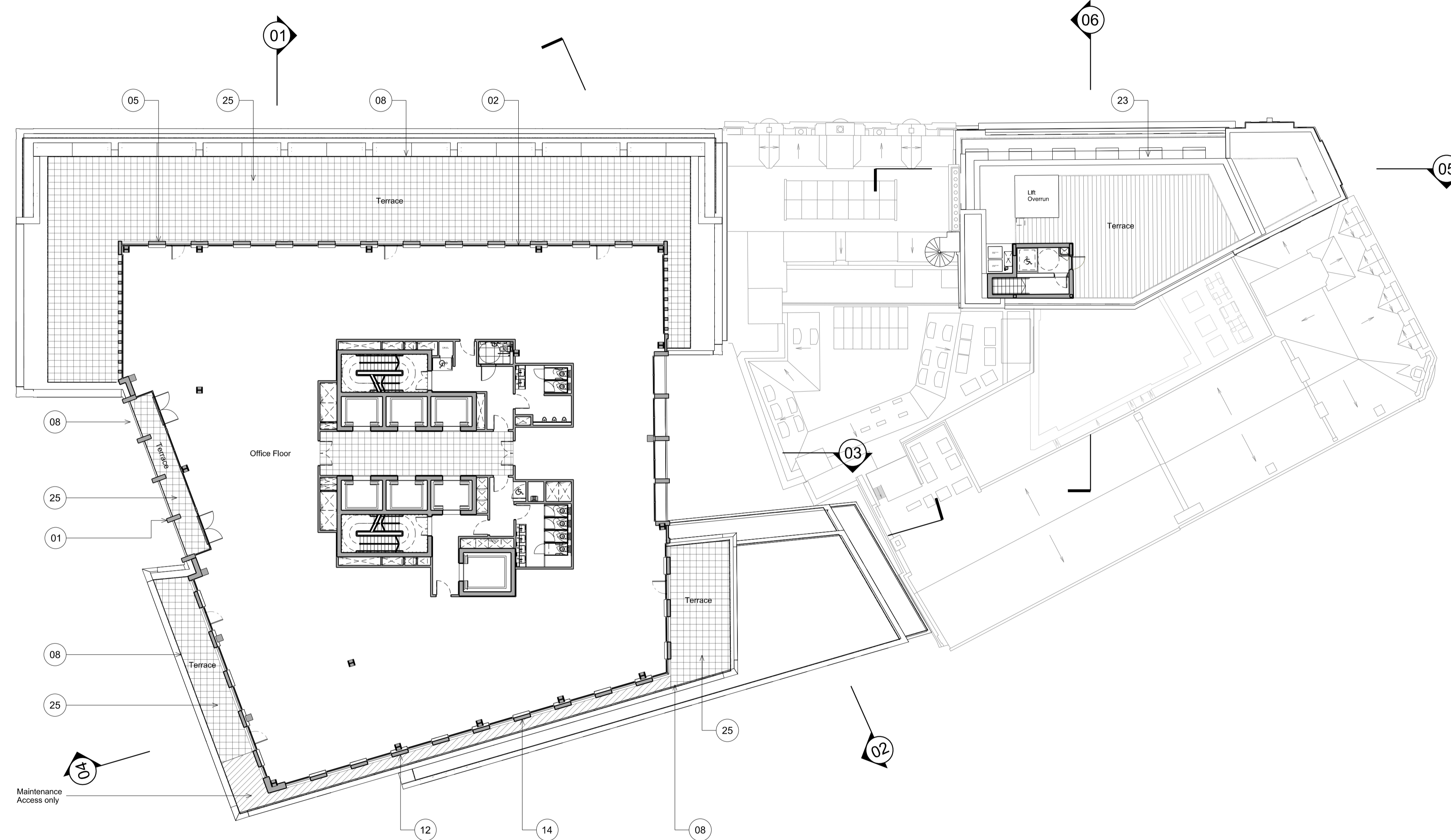
Date Last Saved: Thursday, April 20, 2017

Disclaimer
Do not scale from this drawing.
Check all dimensions on site before fabrication or setting out.
This document is copyright and may not be reproduced without permission of the owner.

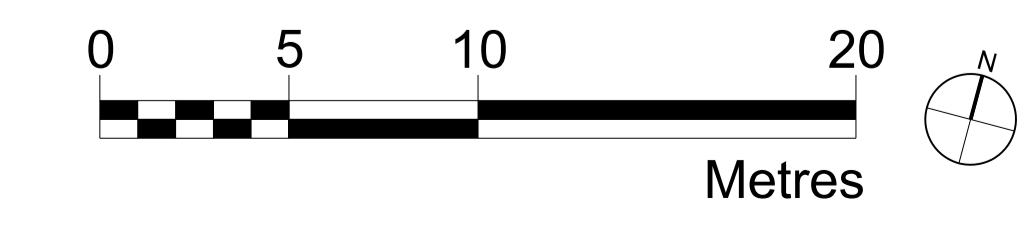
- Key
- 01 Precast masonry element, Pale colour
 - 02 Double glazed unit with aluminium frame
 - 03 Bronze coloured aluminium window frame
 - 04 Bronze coloured aluminium spandrel
 - 05 Precast masonry panel with cast in relief, Pale colour
 - 06 Granite plinth
 - 07 Decorative metalwork screening panel
 - 08 Decorative metalwork balustrade
 - 09 Decorative metalwork panel
 - 10 Retail glazing
 - 11 Retail signage zone
 - 12 Brick, Dark Grey colour
 - 13 Precast lintel
 - 14 Brick textured panel, Dark grey colour
 - 15 Brick, Varied warm colour palette
 - 16 Vaulted soffit
 - 17 Dark grey louvres with concealed framing and close spacing for ventilation.
 - 18 Loading bay door, Bronze colour aluminium vertical louvres
 - 19 Red brick to match existing
 - 20 Buff brick to match existing
 - 21 Double glazed windows
 - 22 Precast masonry element, Colour to match existing
 - 23 Metal balustrade, Dark grey colour
 - 24 Grey coloured metal
 - 25 Concrete paviors
 - 26 Small scale concrete sett paving
 - 27 Large format concrete paviors
 - 28 Dark Brick
 - 29 Tilt and turn double glazed windows

03	Planning	25.04.17	RPP	RPP
02	Planning	05.04.17	RPP	RPP
01	Planning	31.03.17	RPP	RPP
00	Planning	31.01.17	RPP	RPP
Rev	Notes	Date	Dwn	Iss

Consultants
Structural Engineer: Davies Maguire
M&E Engineer: GDM Partnership
Cost Consultant: Currie & Brown
Planning Consultant: Gerald Eve



01 Level 08
1:200



Robin Partington & Partners
Castlewood
35 New Oxford Street
London
WC1A 1DG
+44 20 7419 3500
mail@rplondon.com
www.rplondon.com

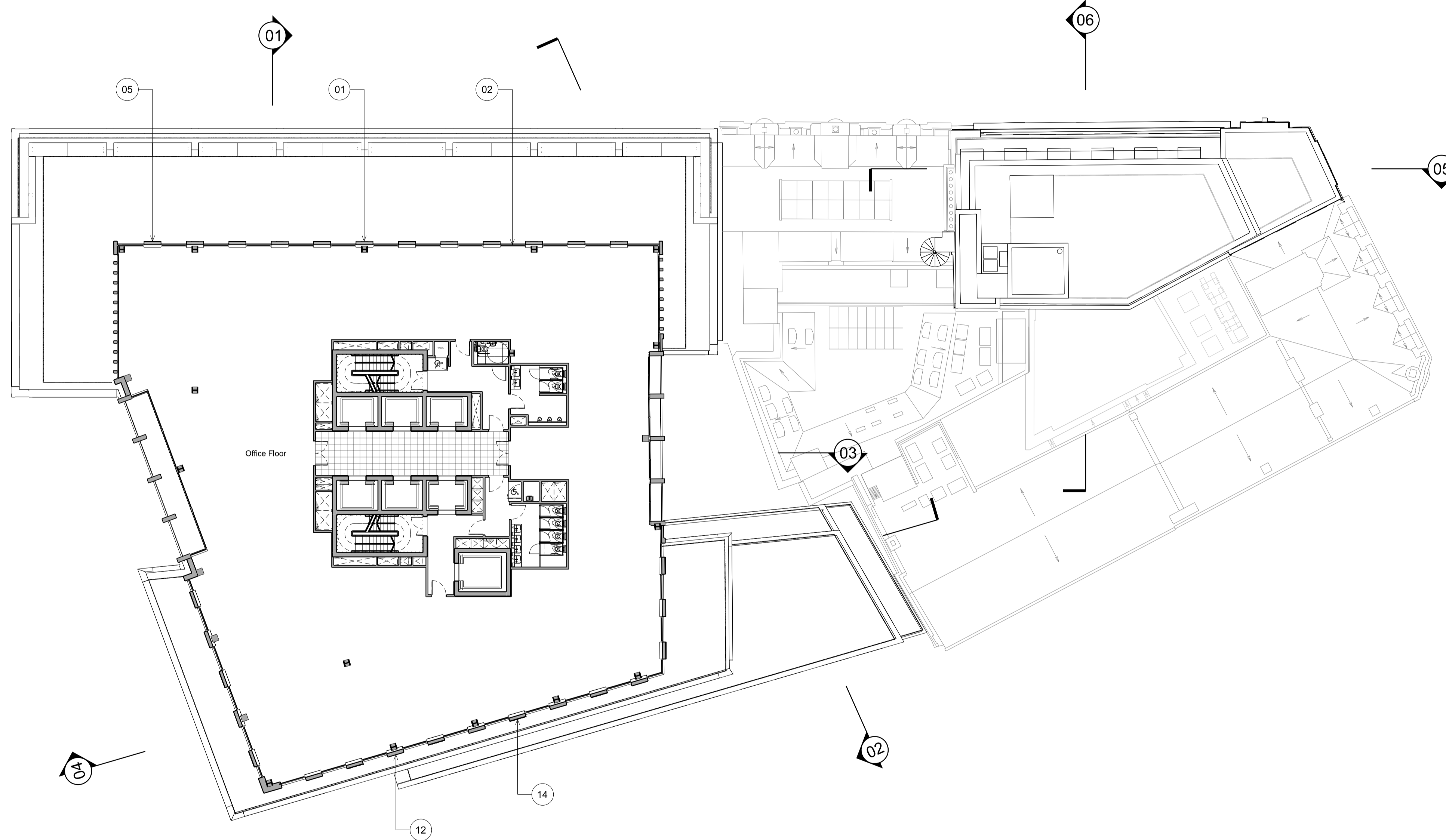
Client
Royal London Asset Management

Project
**Castlewood House & Medius House
London, WC1A**

Drawing Title
**General Arrangement
Proposed Plan
Level 08**

Scale	Drawn By	Issued By
1:200 @ A1	RPP	RPP
PLANNING		
Project No.	Drawing No.	Revision
15023	A_PL_P_108	03

Date Last Saved: Tuesday, April 25, 2017



Disclaimer
Do not scale from this drawing.
Check all dimensions on site before fabrication or setting out.
This document is copyright and may not be reproduced without permission of the owner.

- Key
- 01 Precast masonry element, Pale colour
 - 02 Double glazed unit with aluminium frame
 - 03 Bronze coloured aluminium window frame
 - 04 Bronze coloured aluminium spandrel
 - 05 Precast masonry panel with cast in relief. Pale colour
 - 06 Granite plinth
 - 07 Decorative metalwork screening panel
 - 08 Decorative metalwork balustrade
 - 09 Decorative metalwork panel
 - 10 Retail glazing
 - 11 Retail signage zone
 - 12 Brick, Dark Grey colour
 - 13 Precast lintel
 - 14 Brick textured panel, Dark grey colour
 - 15 Brick, Varied warm colour palette
 - 16 Vaulted soffit
 - 17 Dark grey vertical louvres with concealed framing and close spacing for ventilation.
 - 18 Loading bay door, Bronze colour aluminium vertical louvres
 - 19 Red brick to match existing
 - 20 Buff brick to match existing
 - 21 Double glazed UPVC windows
 - 22 Precast masonry element, Colour to match existing
 - 23 Metal balustrade, Dark grey colour
 - 24 Grey coloured metal
 - 25 Concrete paviors
 - 26 Small scale concrete sett paving
 - 27 Large format concrete paviors
 - 28 Dark Brick
 - 29 Tilt and turn double glazed UPVC windows

01	Planning	31.03.17	RPP	RPP
00	Planning	31.01.17	RPP	RPP
Rev	Notes	Date	Dwn	Iss

Consultants
Structural Engineer: Davies Maguire
M&E Engineer: GDM Partnership
Cost Consultant: Currie & Brown
Planning Consultant: Gerald Eve



Robin Partington & Partners
Castlewood
35 New Oxford Street
London
WC1A 1DG
+44 20 7419 3500
mail@rplondon.com
www.rplondon.com

Client
Royal London Asset Management

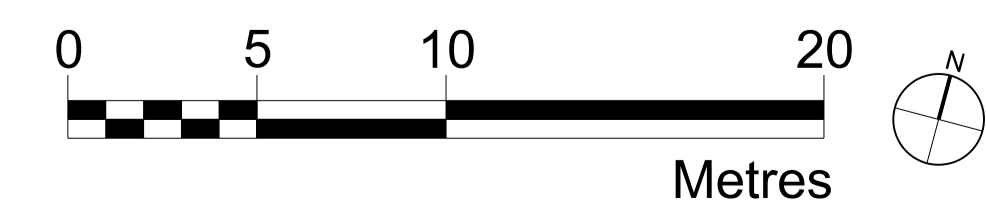
Project
**Castlewood House & Medius House
London, WC1A**

Drawing Title
**General Arrangement
Proposed Plan
Level 09**

Scale	Drawn By	Issued By
1:200 @ A1	RPP	RPP
PLANNING		
Project No.	Drawing No.	Revision
15023	A_PL_P_109	01

Date Last Saved: Thursday, January 26, 2017

01 Level 09
1:200

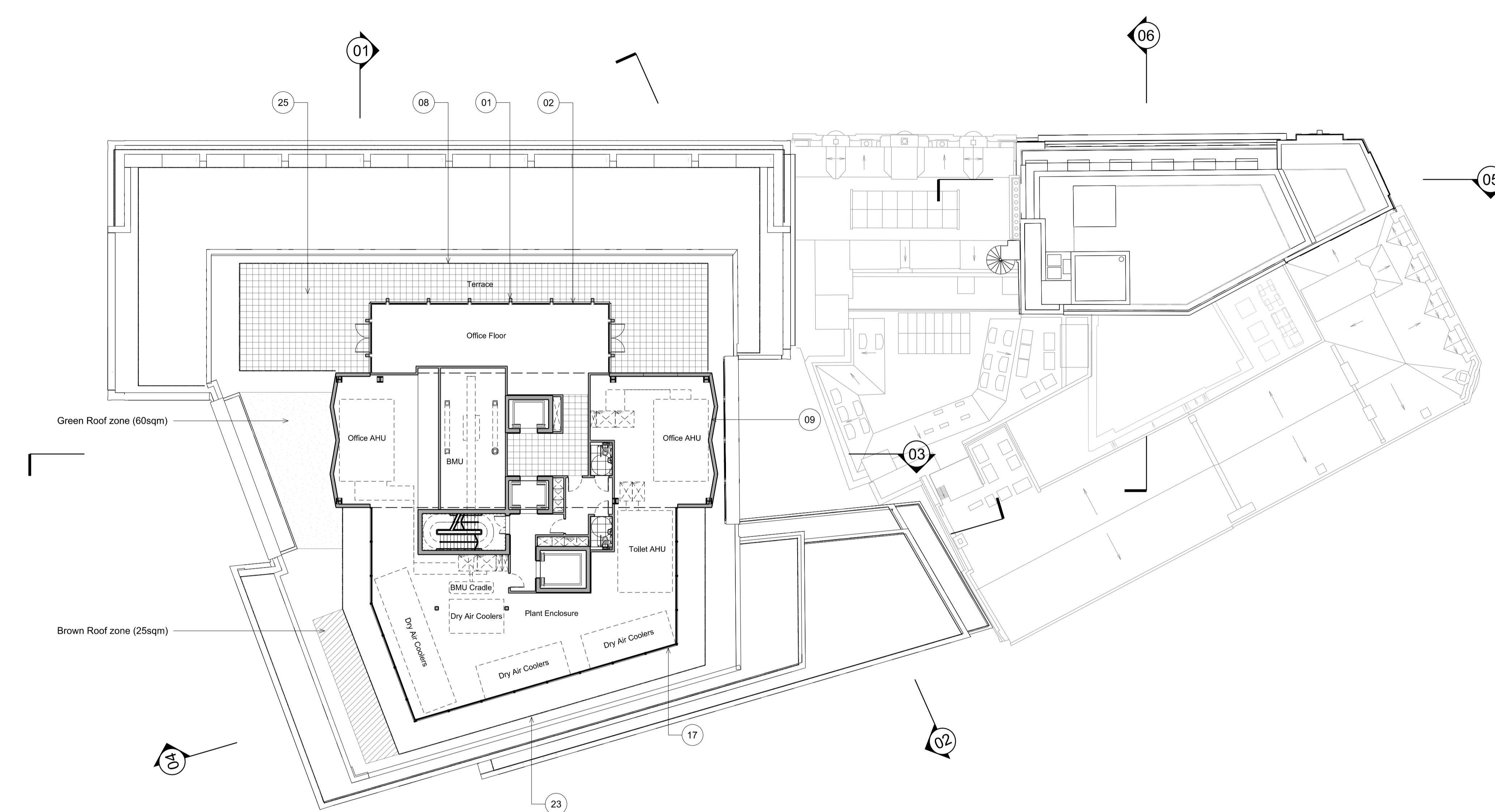


Disclaimer
Do not scale from this drawing.
Check all dimensions on site before fabrication or setting out.
This document is copyright and may not be reproduced without permission of the owner.

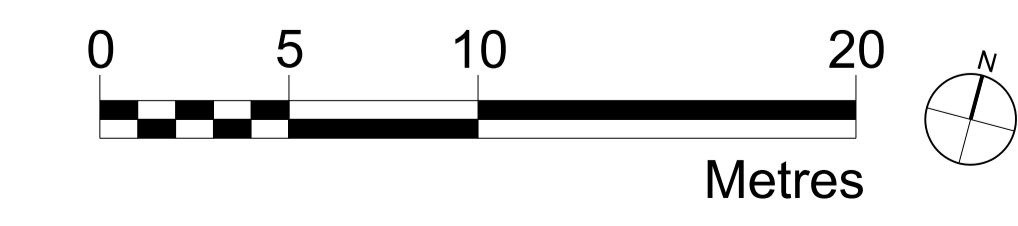
- Key
- 01 Precast masonry element, Pale colour
 - 02 Double glazed unit with aluminium frame
 - 03 Bronze coloured aluminium window frame
 - 04 Bronze coloured aluminium spandrel
 - 05 Precast masonry panel with cast in relief, Pale colour
 - 06 Granite plinth
 - 07 Decorative metalwork screening panel
 - 08 Decorative metalwork balustrade
 - 09 Decorative metalwork panel
 - 10 Retail glazing
 - 11 Retail signage zone
 - 12 Brick, Dark Grey colour
 - 13 Precast lintel
 - 14 Brick textured panel, Dark grey colour
 - 15 Brick, Varied warm colour palette
 - 16 Vaulted soffit
 - 17 Dark grey louvres with concealed framing and close spacing for ventilation.
 - 18 Loading bay door, Bronze colour aluminium vertical louvres
 - 19 Red brick to match existing
 - 20 Buff brick to match existing
 - 21 Double glazed windows
 - 22 Precast masonry element, Colour to match existing
 - 23 Metal balustrade, Dark grey colour
 - 24 Grey coloured metal
 - 25 Concrete paviors
 - 26 Small scale concrete sett paving
 - 27 Large format concrete paviors
 - 28 Dark Brick
 - 29 Tilt and turn double glazed windows

03	Planning	25.04.17	RPP	RPP
02	Planning	21.04.17	RPP	RPP
01	Planning	31.03.17	RPP	RPP
00	Planning	31.01.17	RPP	RPP
Rev	Notes	Date	Dwn	Iss

Consultants
Structural Engineer: Davies Maguire
M&E Engineer: GDM Partnership
Cost Consultant: Currie & Brown
Planning Consultant: Gerald Eve



01 Level 10
1:200



Robin Partington & Partners
Castlewood
35 New Oxford Street
London
WC1A 1DG
+44 20 7419 3500
mail@rplondon.com
www.rplondon.com

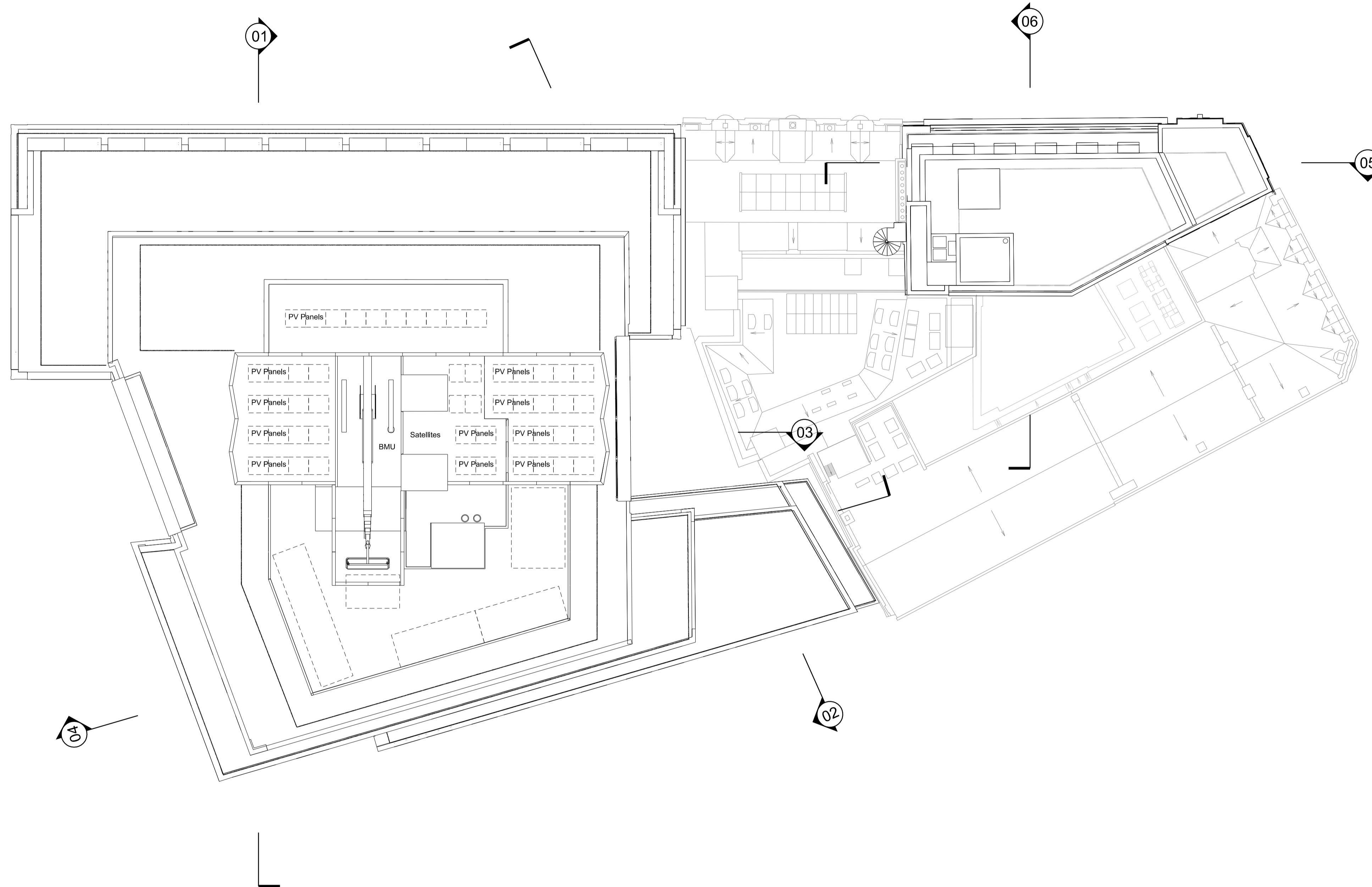
Client
Royal London Asset Management

Project
**Castlewood House & Medius House
London, WC1A**

Drawing Title
**General Arrangement
Proposed Plan
Level 10**

Scale	Drawn By	Issued By
1:200 @ A1	RPP	RPP
PLANNING		
Project No.	Drawing No.	Revision
15023	A_PL_P_110	03

Date Last Saved: Friday, April 21, 2017



Disclaimer
Do not scale from this drawing.
Check all dimensions on site before fabrication or setting out.
This document is copyright and may not be reproduced without permission of the owner.

- Key
- 01 Precast masonry element, Pale colour
 - 02 Double glazed unit with aluminium frame
 - 03 Bronze coloured aluminium window frame
 - 04 Bronze coloured aluminium spandrel
 - 05 Precast masonry panel with cast in relief. Pale colour
 - 06 Granite plinth
 - 07 Decorative metalwork screening panel
 - 08 Decorative metalwork balustrade
 - 09 Decorative metalwork panel
 - 10 Retail glazing
 - 11 Retail signage zone
 - 12 Brick, Dark Grey colour
 - 13 Precast lintel
 - 14 Brick textured panel, Dark grey colour
 - 15 Brick, Varied warm colour palette
 - 16 Vaulted soffit
 - 17 Dark grey louvres with concealed framing and close spacing for ventilation.
 - 18 Loading bay door, Bronze colour aluminium vertical louvres
 - 19 Red brick to match existing
 - 20 Buff brick to match existing
 - 21 Double glazed UPVC windows
 - 22 Precast masonry element, Colour to match existing
 - 23 Metal balustrade, Dark grey colour
 - 24 Grey coloured metal
 - 25 Concrete paviors
 - 26 Small scale concrete sett paving
 - 27 Large format concrete paviors
 - 28 Dark Brick
 - 29 Tilt and turn double glazed UPVC windows

01	Planning	31.03.17	RPP	RPP
00	Planning	31.01.17	RPP	RPP
Rev	Notes	Date	Dwn	Iss

Consultants
Structural Engineer: Davies Maguire
M&E Engineer: GDM Partnership
Cost Consultant: Currie & Brown
Planning Consultant: Gerald Eve



Robin Partington & Partners
Castlewood
35 New Oxford Street
London
WC1A 1DG
+44 20 7419 3500
mail@rplondon.com
www.rplondon.com

Client
Royal London Asset Management

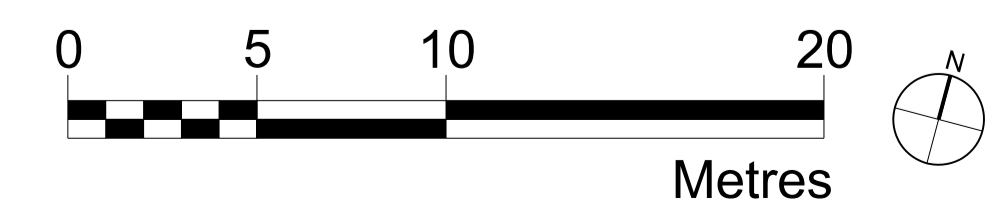
Project
**Castlewood House & Medius House
London, WC1A**

Drawing Title
**General Arrangement
Proposed Plan
Roof Level**

Scale	Drawn By	Issued By
1:200 @ A1	RPP	RPP
PLANNING		
Project No.	Drawing No.	Revision
15023	A_PL_P_111	01

Date Last Saved: Thursday, March 30, 2017

01 Roof Level
1:200



Disclaimer
Do not scale from this drawing.
Check all dimensions on site before fabrication or setting out.
This document is copyright and may not be reproduced without permission of the owner.

- Key
- 01 Precast masonry element, Pale colour
 - 02 Double glazed unit with aluminium frame
 - 03 Bronze coloured aluminium window frame
 - 04 Bronze coloured aluminium spandrel
 - 05 Precast masonry panel with cast in relief. Pale colour
 - 06 Granite plinth
 - 07 Decorative metalwork screening panel
 - 08 Decorative metalwork balustrade
 - 09 Decorative metalwork panel
 - 10 Retail glazing
 - 11 Retail signage zone
 - 12 Brick, Dark Grey colour
 - 13 Precast lintel
 - 14 Brick textured panel, Dark grey colour
 - 15 Brick, Varied warm colour palette
 - 16 Vaulted soffit
 - 17 Dark grey vertical louvres with concealed framing and close spacing for ventilation
 - 18 Loading bay door, Bronze colour aluminium vertical louvres
 - 19 Red brick to match existing
 - 20 Buff brick to match existing
 - 21 Double glazed UPVC windows
 - 22 Precast masonry element, Colour to match existing
 - 23 Metal balustrade, Dark grey colour
 - 24 Grey coloured metal
 - 25 Concrete paviors
 - 26 Small scale concrete sett paving
 - 27 Large format concrete paviors
 - 28 Dark Brick
 - 29 Tilt and turn double glazed UPVC windows

01	Planning	31.03.17	RPP	RPP
00	Planning	31.01.17	RPP	RPP
Rev	Notes	Date	Dwn	Iss

Consultants
Structural Engineer: Davies Maguire
M&E Engineer: GDM Partnership
Cost Consultant: Currie & Brown
Planning Consultant: Gerald Eve



Robin Partington & Partners
Castlewood
35 New Oxford Street
London
WC1A 1DG
+44 20 7419 3500
mail@rplondon.com
www.rplondon.com

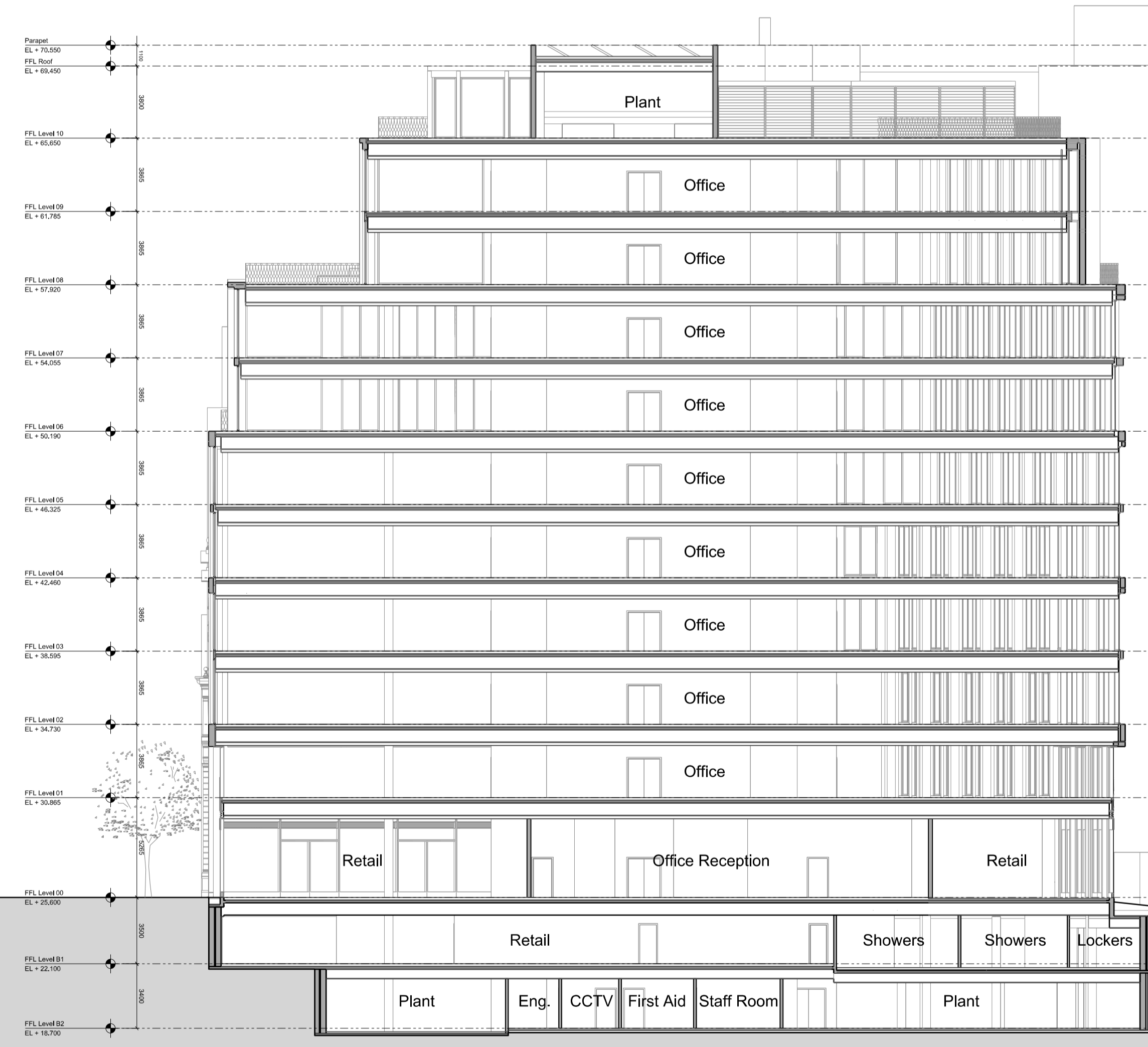
Client
Royal London Asset Management

Project
**Castlewood House & Medius House
London, WC1A**

Drawing Title
**General Arrangement
Proposed Section
Section 01**

Scale	1:200 @ A1	Drawn By	RPP	Issued By	RPP
PLANNING					
Project No.	15023	Drawing No.	A_PL_P_201	Revision	01

Date Last Saved: Monday, March 27, 2017



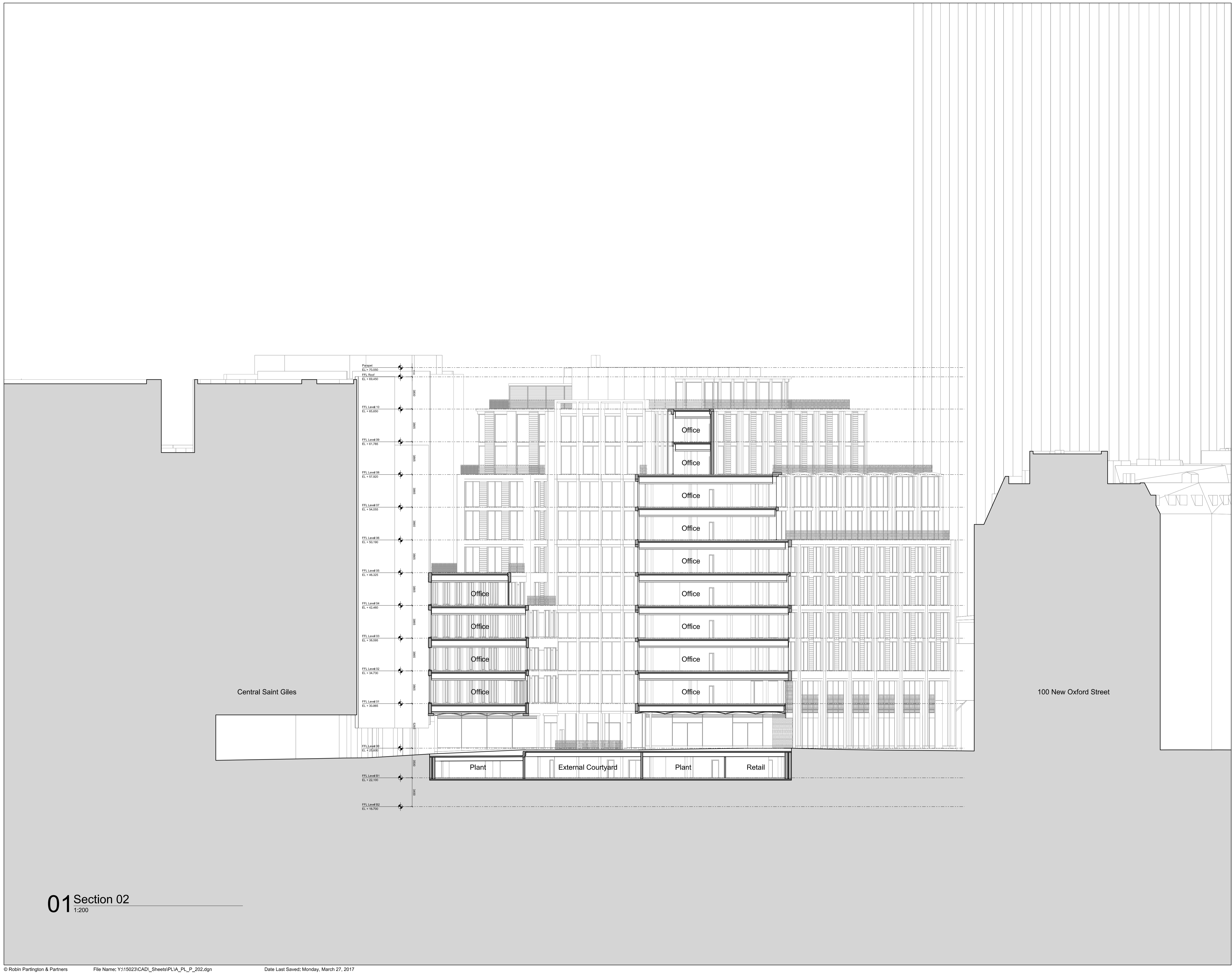
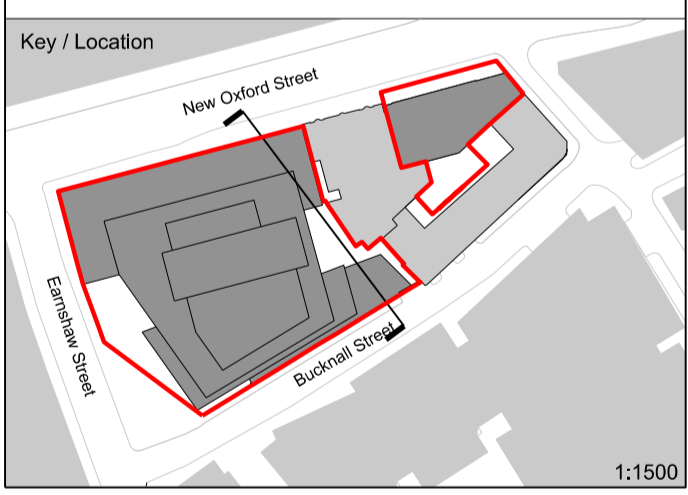
01 Section 01
1:200

Disclaimer
Do not scale from this drawing.
Check all dimensions on site before fabrication or setting out.
This document is copyright and may not be reproduced without permission of the owner.

- Key
- 01 Precast masonry element, Pale colour
 - 02 Double glazed unit with aluminium frame
 - 03 Bronze coloured aluminium window frame
 - 04 Bronze coloured aluminium spandrel
 - 05 Precast masonry panel with cast in relief. Pale colour
 - 06 Granite plinth
 - 07 Decorative metalwork screening panel
 - 08 Decorative metalwork balustrade
 - 09 Decorative metalwork panel
 - 10 Retail glazing
 - 11 Retail signage zone
 - 12 Brick, Dark Grey colour
 - 13 Precast lintel
 - 14 Brick textured panel, Dark grey colour
 - 15 Brick, Varied warm colour palette
 - 16 Vaulted soffit
 - 17 Dark grey vertical louvres with concealed framing and close spacing for ventilation
 - 18 Loading bay door, Bronze colour aluminium vertical louvres
 - 19 Red brick to match existing
 - 20 Buff brick to match existing
 - 21 Double glazed UPVC windows
 - 22 Precast masonry element, Colour to match existing
 - 23 Metal balustrade, Dark grey colour
 - 24 Grey coloured metal
 - 25 Concrete paviors
 - 26 Small scale concrete sett paving
 - 27 Large format concrete paviors
 - 28 Dark Brick
 - 29 Tilt and turn double glazed UPVC windows

01	Planning	31.03.17	RPP	RPP
00	Planning	31.01.17	RPP	RPP
Rev	Notes	Date	Dwn	Iss

Consultants
Structural Engineer: Davies Maguire
M&E Engineer: GDM Partnership
Cost Consultant: Currie & Brown
Planning Consultant: Gerald Eve



01 Section 02
1:200

Robin Partington & Partners
Castlewood
35 New Oxford Street
London
WC1A 1DG
+44 20 7419 3500
mail@rplondon.com
www.rplondon.com

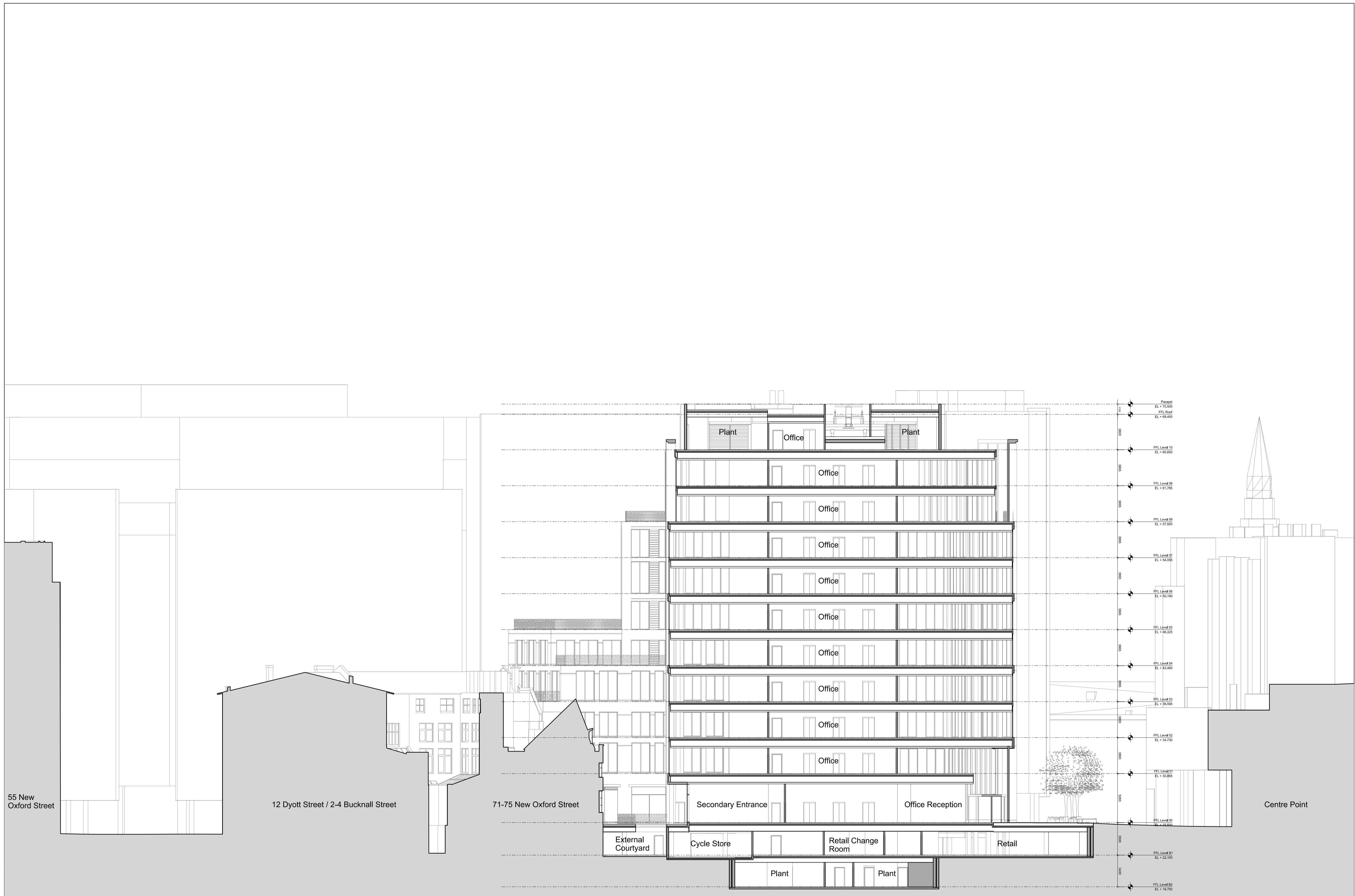
Client
Royal London Asset Management

Project
**Castlewood House & Medius House
London, WC1A**

Drawing Title
**General Arrangement
Proposed Section
Section 02**

Scale	Drawn By	Issued By
1:200 @ A1	RPP	RPP
PLANNING		
Project No.	Drawing No.	Revision
15023	A_PL_P_202	01

Date Last Saved: Monday, March 27, 2017



- Disclaimer
Do not scale from this drawing. Check all dimensions on site before fabrication or setting out. This document is copyright and may not be reproduced without permission of the owner.
- Key
- 01 Precast masonry element, Pale colour
 - 02 Double glazed unit with aluminium frame
 - 03 Bronze coloured aluminium window frame
 - 04 Bronze coloured aluminium spandrel
 - 05 Precast masonry panel with cast in relief. Pale colour
 - 06 Granite plinth
 - 07 Decorative metalwork screening panel
 - 08 Decorative metalwork balustrade
 - 09 Decorative metalwork panel
 - 10 Retail glazing
 - 11 Retail signage zone
 - 12 Brick, Dark Grey colour
 - 13 Precast lintel
 - 14 Brick textured panel, Dark grey colour
 - 15 Brick, Varied warm colour palette
 - 16 Vaulted soffit
 - 17 Dark grey vertical louvres with concealed framing and close spacing for ventilation.
 - 18 Loading bay door, Bronze colour aluminium vertical louvres
 - 19 Red brick to match existing
 - 20 Buff brick to match existing
 - 21 Double glazed UPVC windows
 - 22 Precast masonry element, Colour to match existing
 - 23 Metal balustrade, Dark grey colour
 - 24 Grey coloured metal
 - 25 Concrete paviors
 - 26 Small scale concrete sett paving
 - 27 Large format concrete paviors
 - 28 Dark Brick
 - 29 Tilt and turn double glazed UPVC windows

01	Planning	31.03.17	RPP	RPP
00	Planning	31.01.17	RPP	RPP
Rev	Notes	Date	Dwn	Iss

Consultants
 Structural Engineer: Davies Maguire
 MSE Engineer: GDM Partnership
 Cost Consultant: Currie & Brown
 Planning Consultant: Gerald Eve



Robin Partington & Partners
 Castlewood
 35 New Oxford Street
 London
 WC1A 1DG
 +44 20 7419 3500
 mail@rplondon.com
 www.rplondon.com

Client
Royal London Asset Management

Project
**Castlewood House & Medius House
 London, WC1A**

Drawing Title
**General Arrangement
 Proposed Section
 Section 03**

Scale	Drawn By	Issued By
1:200 @ A1	RPP	RPP

PLANNING		
Project No.	Drawing No.	Revision
15023	A_PL_P_203	01

01 Section 03
1:200