

Disclaimer
Do not scale from this drawing. Check all dimensions on site before fabrication or setting out. This document is copyright and may not be reproduced without permission of the owner.

- Key
- 01 Precast masonry element, Pale colour
 - 02 Double glazed unit with aluminium frame
 - 03 Bronze coloured aluminium window frame
 - 04 Bronze coloured aluminium spandrel
 - 05 Precast masonry panel with cast in relief, Pale colour
 - 06 Granite plinth
 - 07 Decorative metalwork screening panel
 - 08 Decorative metalwork balustrade
 - 09 Decorative metalwork panel
 - 10 Retail glazing
 - 11 Retail signage zone
 - 12 Brick, Dark Grey colour
 - 13 Precast lintel
 - 14 Brick textured panel, Dark grey colour
 - 15 Brick, Varied warm colour palette
 - 16 Vaulted soffit
 - 17 Dark grey vertical louvres with concealed framing and close spacing for ventilation
 - 18 Loading bay door, Bronze colour aluminium vertical louvres
 - 19 Red brick to match existing
 - 20 Buff brick to match existing
 - 21 Double glazed UPVC windows
 - 22 Precast masonry element, Colour to match existing
 - 23 Metal balustrade, Dark grey colour
 - 24 Textured dark brick
 - 25 Concrete paviors
 - 26 Small scale concrete sett paving
 - 27 Large format concrete paviors
 - 28 Dark Brick
 - 29 Tilt and turn double glazed UPVC windows

00	Planning	31.01.17	RPP	RPP
Rev	Notes	Date	Dwn	Iss

Consultants
Structural Engineer: Davies Maguire
M&E Engineer: GDM Partnership
Cost Consultant: Currie & Brown
Planning Consultant: Gerald Eve



Robin Partington & Partners
Castlewood
35 New Oxford Street
London
WC1A 1DG
+44 20 7419 3500
mail@rplondon.com
www.rplondon.com

Client
Royal London Asset Management

Project
**Castlewood House & Medius House
London, WC1A**

Drawing Title
**General Arrangement
Proposed Plan
Level B02**

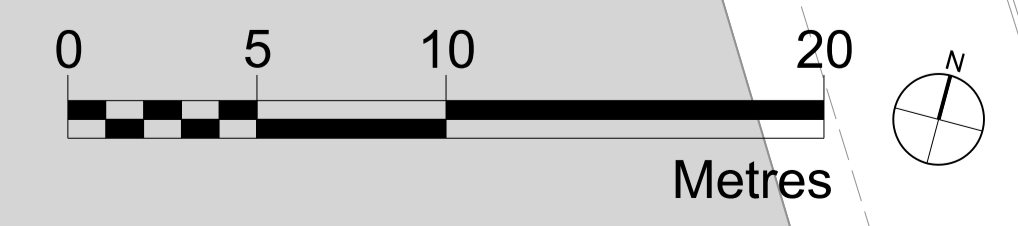
Scale	Drawn By	Issued By
1:200 @ A1	RPP	RPP

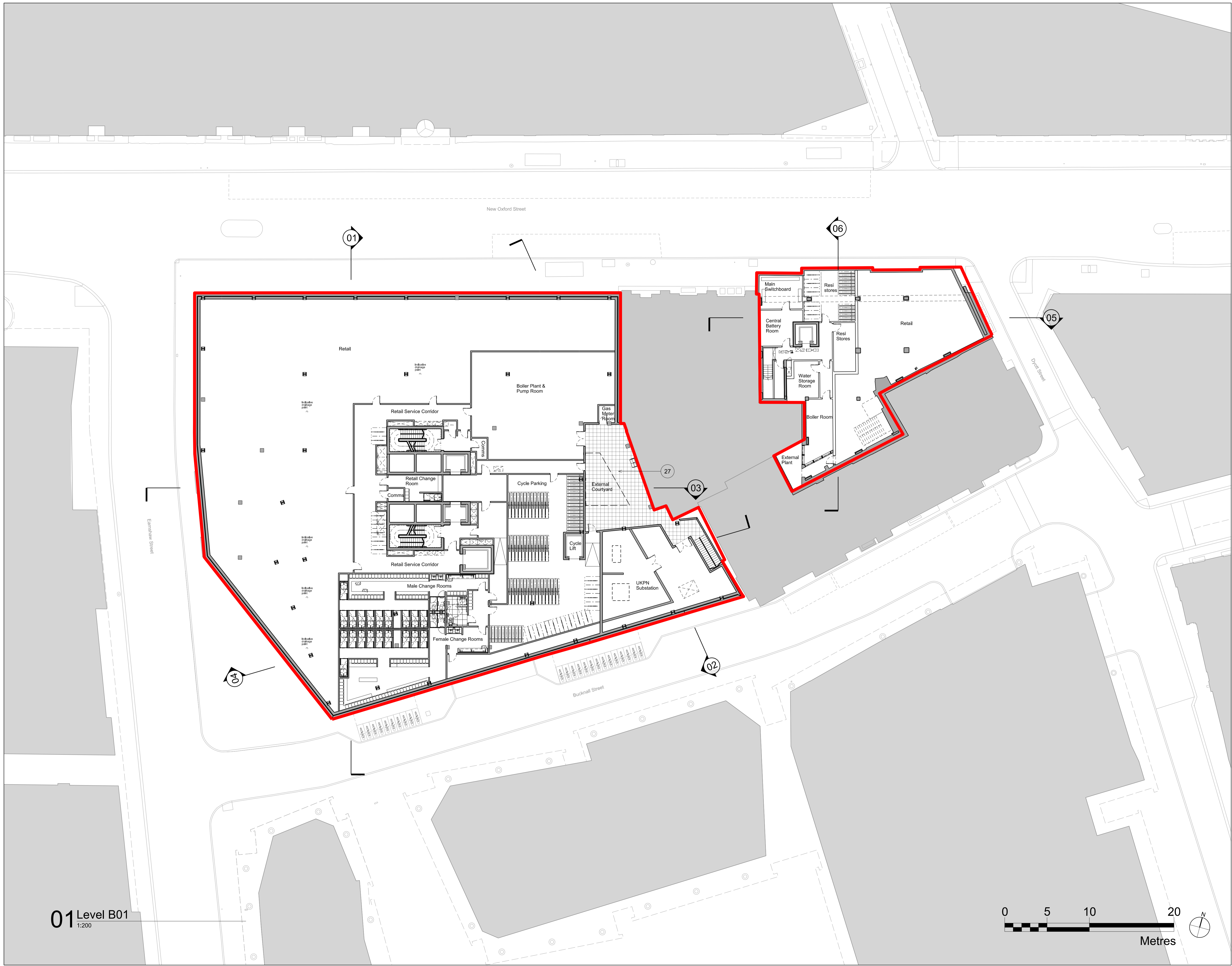
PLANNING

Project No.	Drawing No.	Revision
15023	A_PL_P_098	00

Date Last Saved: Thursday, January 26, 2017

01 Level B02
1:200





- Disclaimer**
Do not scale from this drawing. Check all dimensions on site before fabrication or setting out. This document is copyright and may not be reproduced without permission of the owner.
- Key**
- 01 Precast masonry element, Pale colour
 - 02 Double glazed unit with aluminium frame
 - 03 Bronze coloured aluminium window frame
 - 04 Bronze coloured aluminium spandrel
 - 05 Precast masonry panel with cast in relief. Pale colour
 - 06 Granite plinth
 - 07 Decorative metalwork screening panel
 - 08 Decorative metalwork balustrade
 - 09 Decorative metalwork panel
 - 10 Retail glazing
 - 11 Retail signage zone
 - 12 Brick, Dark Grey colour
 - 13 Precast lintel
 - 14 Brick textured panel, Dark grey colour
 - 15 Brick, Varied warm colour palette
 - 16 Vaulted soffit
 - 17 Dark grey louvres with concealed framing and close spacing for ventilation.
 - 18 Loading bay door, Bronze colour aluminium vertical louvres
 - 19 Red brick to match existing
 - 20 Buff brick to match existing
 - 21 Double glazed UPVC windows
 - 22 Precast masonry element, Colour to match existing
 - 23 Metal balustrade, Dark grey colour
 - 24 Grey coloured metal
 - 25 Concrete paviors
 - 26 Small scale concrete sett paving
 - 27 Large format concrete paviors
 - 28 Dark Brick
 - 29 Tilt and turn double glazed UPVC windows

01	Planning	31.03.17	RPP	RPP
00	Planning	31.01.17	RPP	RPP
Rev	Notes	Date	Dwn	Iss

Consultants
 Structural Engineer: Davies Maguire
 M&E Engineer: GDM Partnership
 Cost Consultant: Currie & Brown
 Planning Consultant: Gerald Eve



Robyn Partington & Partners
 Castlewood
 35 New Oxford Street
 London
 WC1A 1DG
 +44 20 7419 3500
 mail@rplondon.com
 www.rplondon.com

Client
 Royal London Asset Management

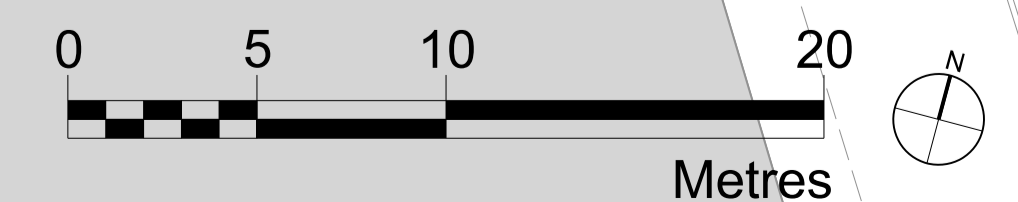
Project
 Castlewood House & Medius House
 London, WC1A

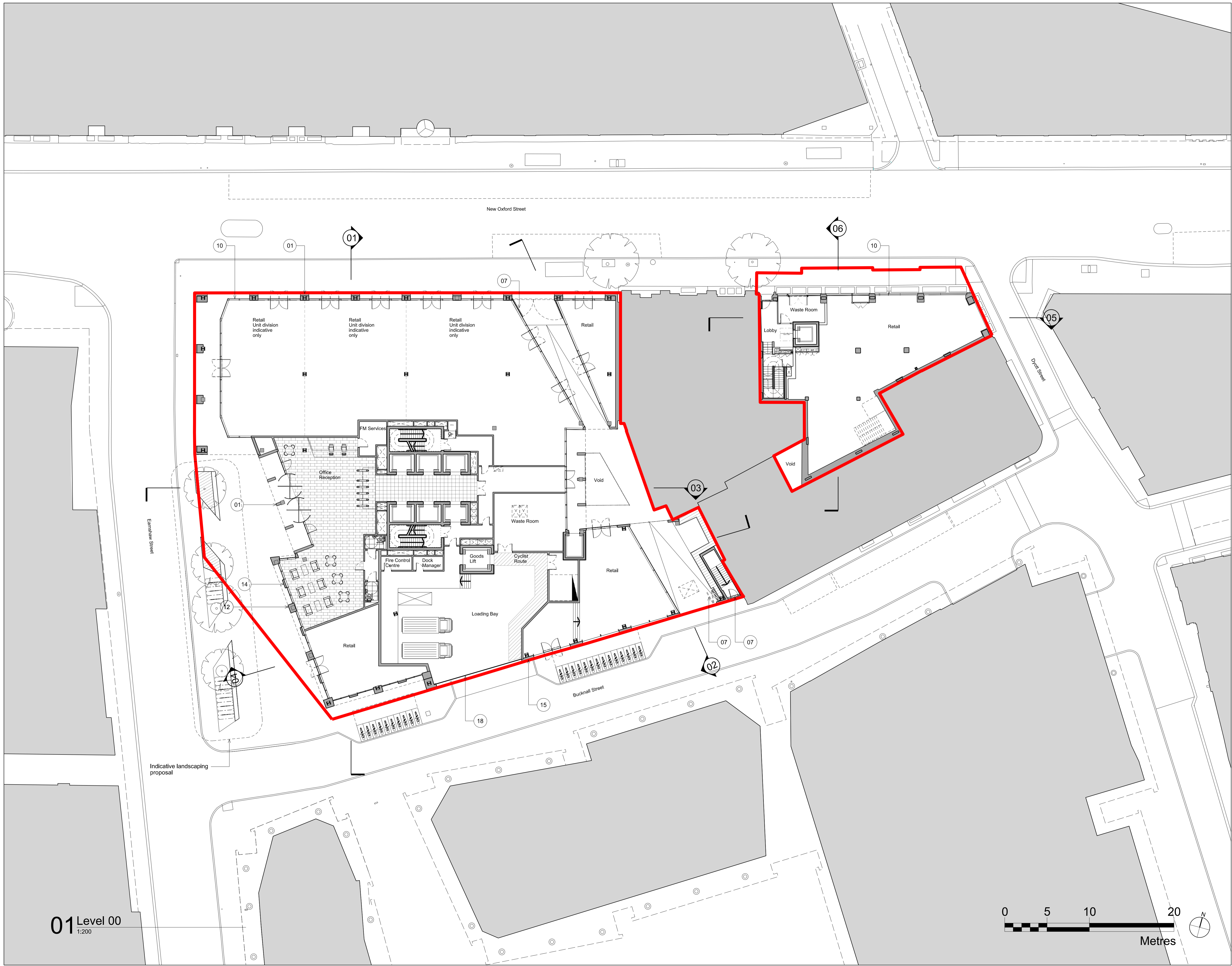
Drawing Title
 General Arrangement
 Proposed Plan
 Level B01

Scale	Drawn By	Issued By
1:200 @ A1	RPP	RPP
PLANNING		
Project No.	Drawing No.	Revision
15023	A_PL_P_099	01

Date Last Saved: Friday, March 31, 2017

01 Level B01
1:200





Disclaimer
Do not scale from this drawing.
Check all dimensions on site before fabrication or setting out.
This document is copyright and may not be reproduced without permission of the owner.

- Key
- 01 Precast masonry element, Pale colour
 - 02 Double glazed unit with aluminium frame
 - 03 Bronze coloured aluminium window frame
 - 04 Bronze coloured aluminium spandrel
 - 05 Precast masonry panel with cast in relief. Pale colour
 - 06 Granite plinth
 - 07 Decorative metalwork screening panel
 - 08 Decorative metalwork balustrade
 - 09 Decorative metalwork panel
 - 10 Retail glazing
 - 11 Retail signage zone
 - 12 Brick, Dark Grey colour
 - 13 Precast lintel
 - 14 Brick textured panel, Dark grey colour
 - 15 Brick, Varied warm colour palette
 - 16 Vaulted soffit
 - 17 Dark grey vertical louvres with concealed framing and close spacing for ventilation.
 - 18 Loading bay door, Bronze colour aluminium vertical louvres
 - 19 Red brick to match existing
 - 20 Buff brick to match existing
 - 21 Double glazed UPVC windows
 - 22 Precast masonry element, Colour to match existing
 - 23 Metal balustrade, Dark grey colour
 - 24 Grey coloured metal
 - 25 Concrete paviors
 - 26 Small scale concrete sett paving
 - 27 Large format concrete paviors
 - 28 Dark Brick
 - 29 Tilt and turn double glazed UPVC windows

01	Planning	31.03.17	RPP	RPP
00	Planning	31.01.17	RPP	RPP
Rev	Notes	Date	Dwn	Iss

Consultants
Structural Engineer: Davies Maguire
M&E Engineer: GDM Partnership
Cost Consultant: Currie & Brown
Planning Consultant: Gerald Eve



Robin Partington & Partners
Castlewood
35 New Oxford Street
London
WC1A 1DG
+44 20 7419 3500
mail@rplondon.com
www.rplondon.com

Client
Royal London Asset Management

Project
**Castlewood House & Medius House
London, WC1A**

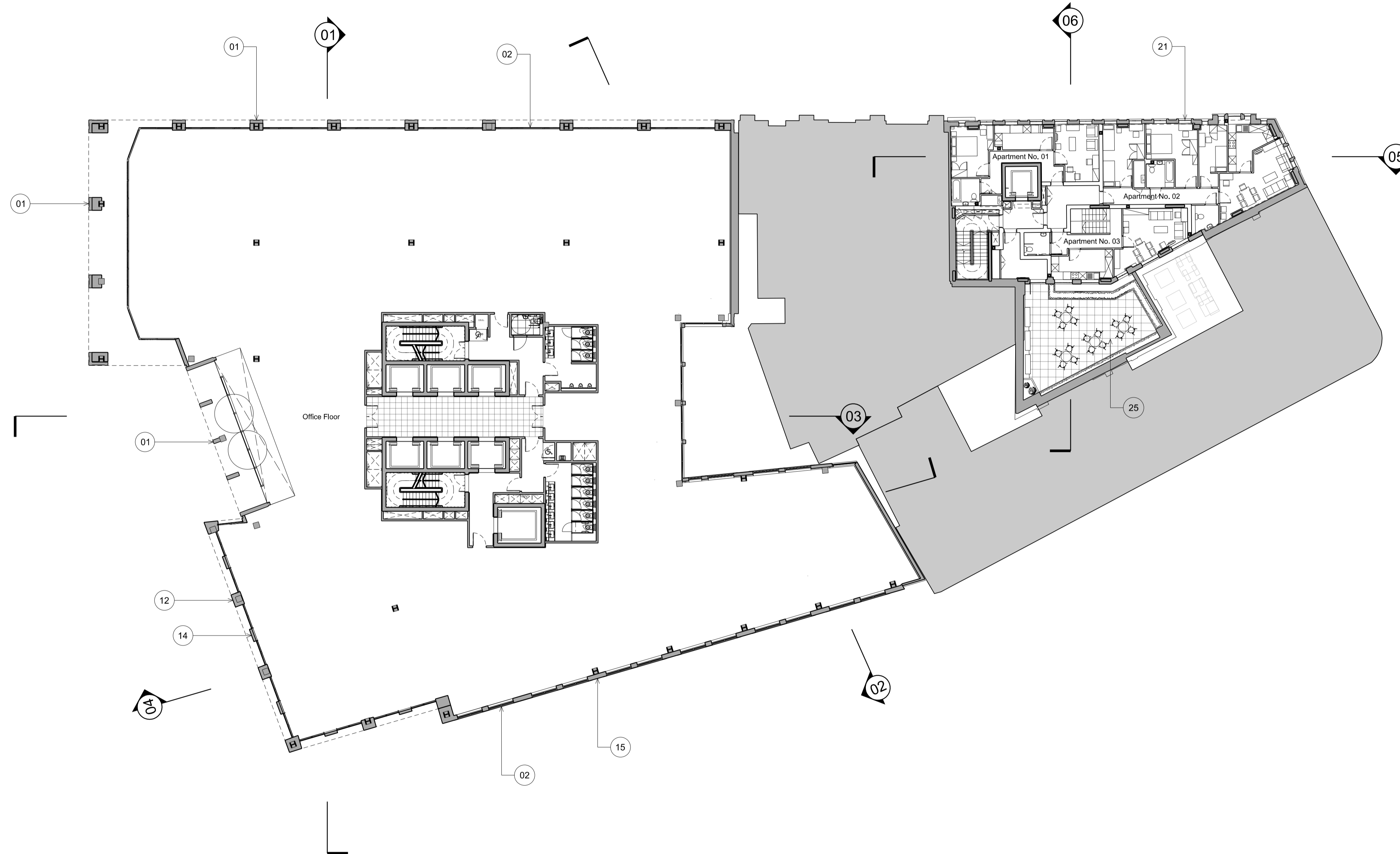
Drawing Title
**General Arrangement
Proposed Plan
Ground Level**

Scale	Drawn By	Issued By
1:200 @ A1	RPP	RPP

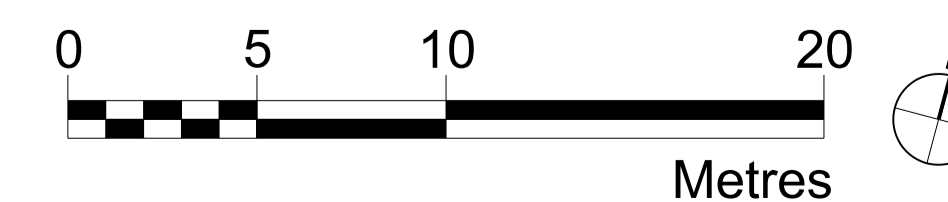
PLANNING		
Project No.	Drawing No.	Revision
15023	A_PL_P_100	01

Date Last Saved: Wednesday, March 29, 2017

01 Level 00
1:200



01 Level 01
1:200



Disclaimer
Do not scale from this drawing. Check all dimensions on site before fabrication or setting out. This document is copyright and may not be reproduced without permission of the owner.

- Key**
- 01 Precast masonry element, Pale colour
 - 02 Double glazed unit with aluminium frame
 - 03 Bronze coloured aluminium window frame
 - 04 Bronze coloured aluminium spandrel
 - 05 Precast masonry panel with cast in relief. Pale colour
 - 06 Granite plinth
 - 07 Decorative metalwork screening panel
 - 08 Decorative metalwork balustrade
 - 09 Decorative metalwork panel
 - 10 Retail glazing
 - 11 Retail signage zone
 - 12 Brick, Dark Grey colour
 - 13 Precast lintel
 - 14 Brick textured panel, Dark grey colour
 - 15 Brick, Varied warm colour palette
 - 16 Vaulted soffit
 - 17 Dark grey louvres with concealed framing and close spacing for ventilation.
 - 18 Loading bay door, Bronze colour aluminium vertical louvres
 - 19 Red brick to match existing
 - 20 Buff brick to match existing
 - 21 Double glazed windows
 - 22 Precast masonry element, Colour to match existing
 - 23 Metal balustrade, Dark grey colour
 - 24 Grey coloured metal
 - 25 Concrete paviors
 - 26 Small scale concrete sett paving
 - 27 Large format concrete paviors
 - 28 Dark Brick
 - 29 Tilt and turn double glazed windows

02	Planning	20.04.17	RPP	RPP
01	Planning	31.03.17	RPP	RPP
00	Planning	31.01.17	RPP	RPP

Rev	Notes	Date	Dwn	Iss
-----	-------	------	-----	-----

Consultants
 Structural Engineer: Davies Maguire
 M&E Engineer: GDM Partnership
 Cost Consultant: Currie & Brown
 Planning Consultant: Gerald Eve



Robin Partington & Partners
 Castlewood
 35 New Oxford Street
 London
 WC1A 1DG
 +44 20 7419 3500
 mail@rplondon.com
 www.rplondon.com

Client
 Royal London Asset Management

Project
 Castlewood House & Medius House
 London, WC1A

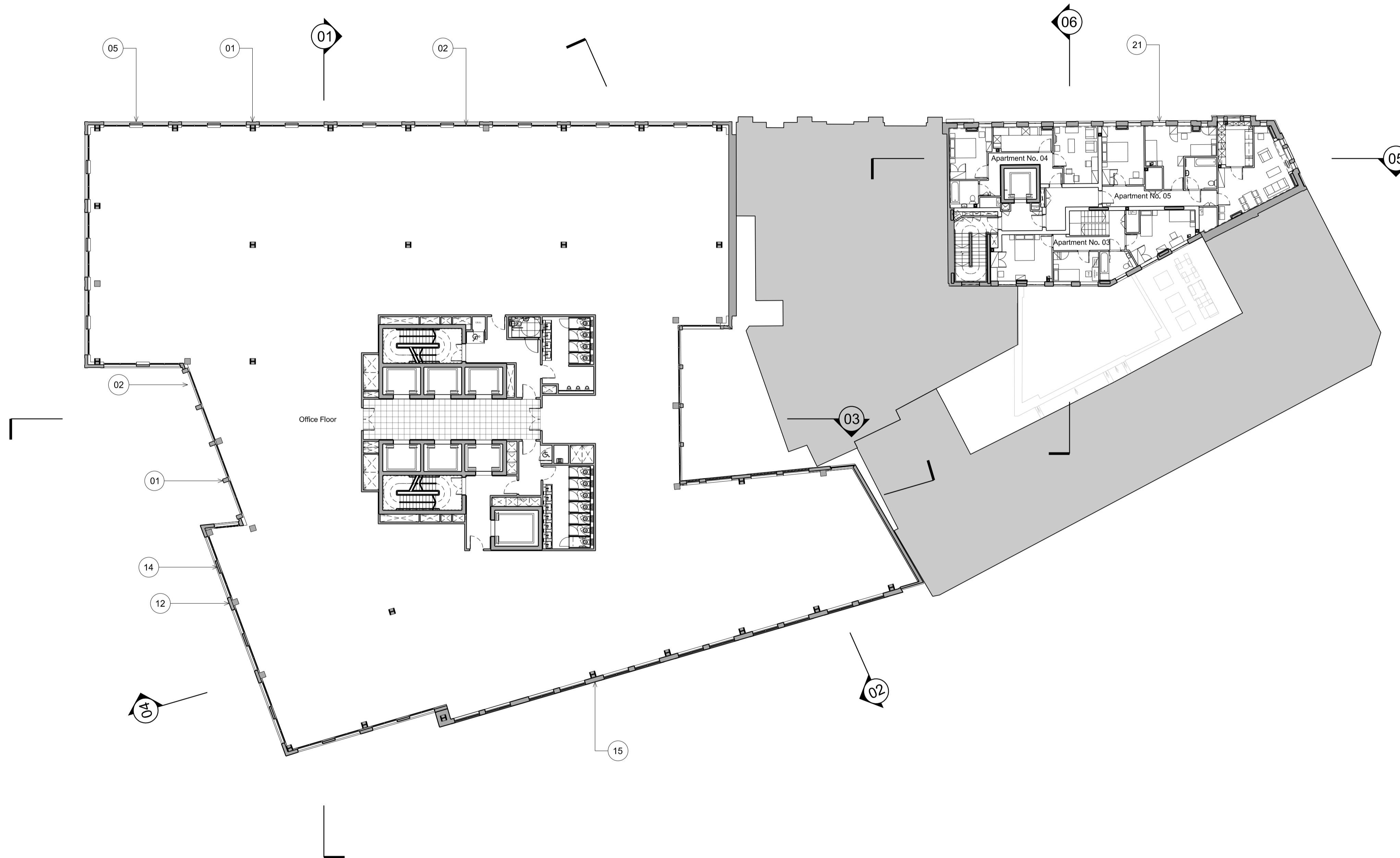
Drawing Title
 General Arrangement
 Proposed Plan
 Level 01

Scale	Drawn By	Issued By
1:200 @ A1	RPP	RPP

PLANNING

Project No.	Drawing No.	Revision
15023	A_PL_P_101	02

Date Last Saved: Thursday, April 20, 2017



Disclaimer
Do not scale from this drawing.
Check all dimensions on site before fabrication or setting out.
This document is copyright and may not be reproduced without permission of the owner.

- Key
- 01 Precast masonry element, Pale colour
 - 02 Double glazed unit with aluminium frame
 - 03 Bronze coloured aluminium window frame
 - 04 Bronze coloured aluminium spandrel
 - 05 Precast masonry panel with cast in relief. Pale colour
 - 06 Granite plinth
 - 07 Decorative metalwork screening panel
 - 08 Decorative metalwork balustrade
 - 09 Decorative metalwork panel
 - 10 Retail glazing
 - 11 Retail signage zone
 - 12 Brick, Dark Grey colour
 - 13 Precast lintel
 - 14 Brick textured panel, Dark grey colour
 - 15 Brick, Varied warm colour palette
 - 16 Vaulted soffit
 - 17 Dark grey louvres with concealed framing and close spacing for ventilation.
 - 18 Loading bay door, Bronze colour aluminium vertical louvres
 - 19 Red brick to match existing
 - 20 Buff brick to match existing
 - 21 Double glazed windows
 - 22 Precast masonry element, Colour to match existing
 - 23 Metal balustrade, Dark grey colour
 - 24 Grey coloured metal
 - 25 Concrete paviors
 - 26 Small scale concrete sett paving
 - 27 Large format concrete paviors
 - 28 Dark Brick
 - 29 Tilt and turn double glazed windows

02	Planning	20.04.17	RPP	RPP
01	Planning	31.03.17	RPP	RPP
00	Planning	31.01.17	RPP	RPP

Rev	Notes	Date	Dwn	Iss
-----	-------	------	-----	-----

Consultants
Structural Engineer: Davies Maguire
M&E Engineer: GDM Partnership
Cost Consultant: Currie & Brown
Planning Consultant: Gerald Eve



Robin Partington & Partners
Castlewood
35 New Oxford Street
London
WC1A 1DG
+44 20 7419 3500
mail@rplondon.com
www.rplondon.com

Client
Royal London Asset Management

Project
**Castlewood House & Medius House
London, WC1A**

Drawing Title
**General Arrangement
Proposed Plan
Level 02**

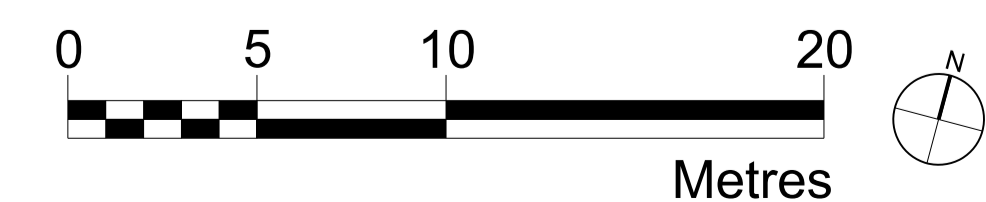
Scale	Drawn By	Issued By
1:200 @ A1	RPP	RPP

PLANNING

Project No.	Drawing No.	Revision
15023	A_PL_P_102	02

Date Last Saved: Thursday, April 20, 2017

01 Level 02
1:200

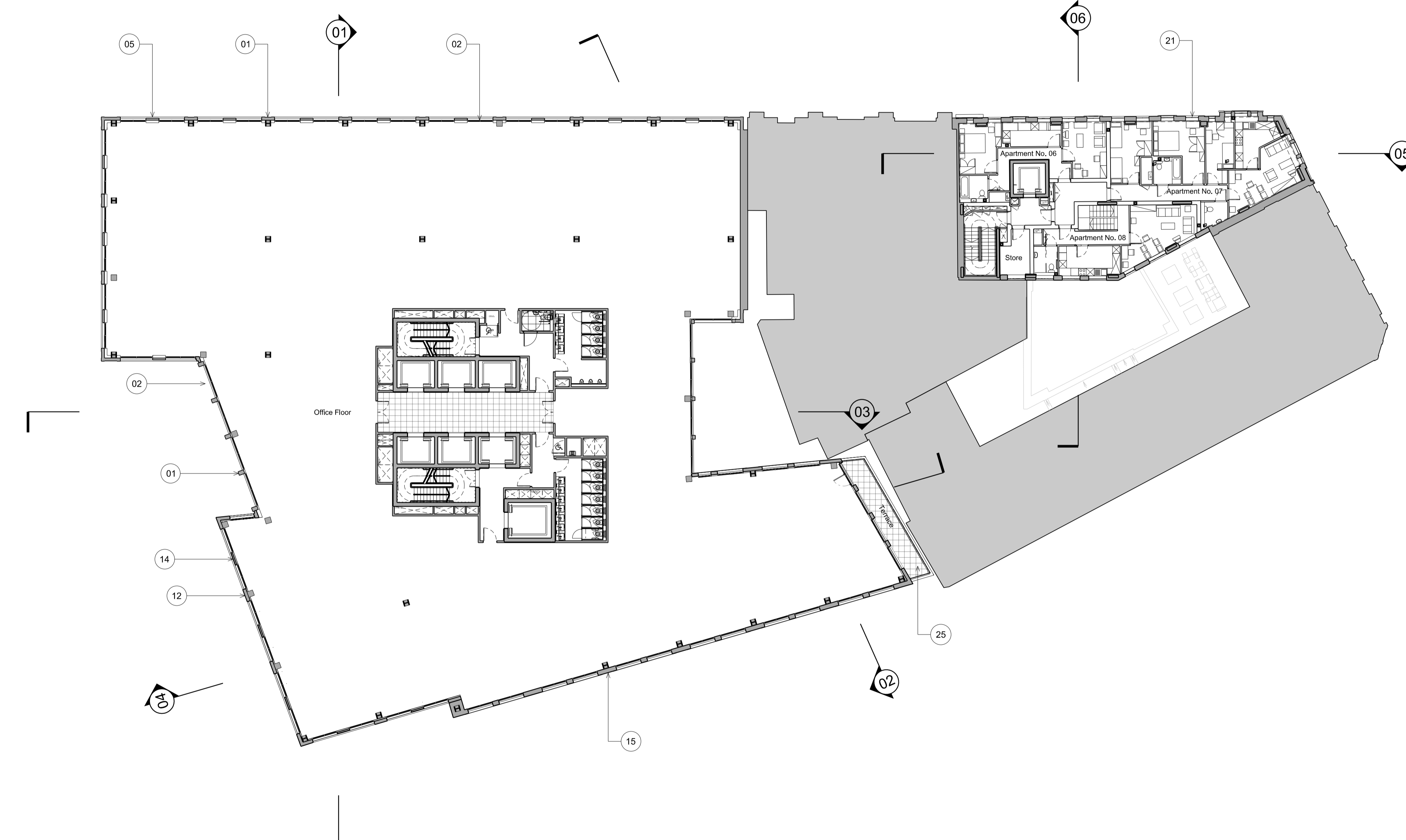
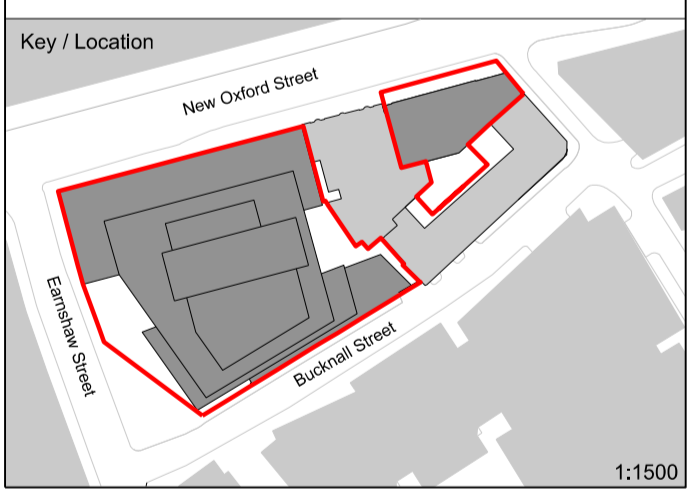


Disclaimer
Do not scale from this drawing.
Check all dimensions on site before fabrication or setting out.
This document is copyright and may not be reproduced without permission of the owner.

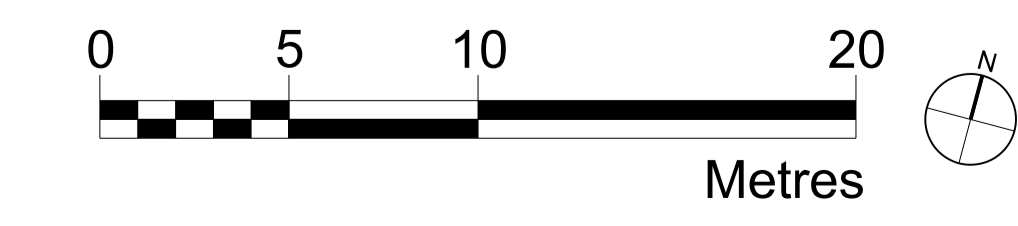
- Key
- 01 Precast masonry element, Pale colour
 - 02 Double glazed unit with aluminium frame
 - 03 Bronze coloured aluminium window frame
 - 04 Bronze coloured aluminium spandrel
 - 05 Precast masonry panel with cast in relief, Pale colour
 - 06 Granite plinth
 - 07 Decorative metalwork screening panel
 - 08 Decorative metalwork balustrade
 - 09 Decorative metalwork panel
 - 10 Retail glazing
 - 11 Retail signage zone
 - 12 Brick, Dark Grey colour
 - 13 Precast lintel
 - 14 Brick textured panel, Dark grey colour
 - 15 Brick, Varied warm colour palette
 - 16 Vaulted soffit
 - 17 Dark grey louvres with concealed framing and close spacing for ventilation.
 - 18 Loading bay door, Bronze colour aluminium vertical louvres
 - 19 Red brick to match existing
 - 20 Buff brick to match existing
 - 21 Double glazed windows
 - 22 Precast masonry element, Colour to match existing
 - 23 Metal balustrade, Dark grey colour
 - 24 Grey coloured metal
 - 25 Concrete paviors
 - 26 Small scale concrete sett paving
 - 27 Large format concrete paviors
 - 28 Dark Brick
 - 29 Tilt and turn double glazed windows

03	Planning	25.04.17	RPP	RPP
02	Planning	20.04.17	RPP	RPP
01	Planning	31.03.17	RPP	RPP
00	Planning	31.01.17	RPP	RPP
Rev	Notes	Date	Dwn	Iss

Consultants
Structural Engineer: Davies Maguire
M&E Engineer: GDM Partnership
Cost Consultant: Currie & Brown
Planning Consultant: Gerald Eve



01 Level 03
1:200



Robin Partington & Partners
Castlewood
35 New Oxford Street
London
WC1A 1DG
+44 20 7419 3500
mail@rplondon.com
www.rplondon.com

Client
Royal London Asset Management

Project
**Castlewood House & Medius House
London, WC1A**

Drawing Title
**General Arrangement
Proposed Plan
Level 03**

Scale	Drawn By	Issued By
1:200 @ A1	RPP	RPP
PLANNING		
Project No.	Drawing No.	Revision
15023	A_PL_P_103	03

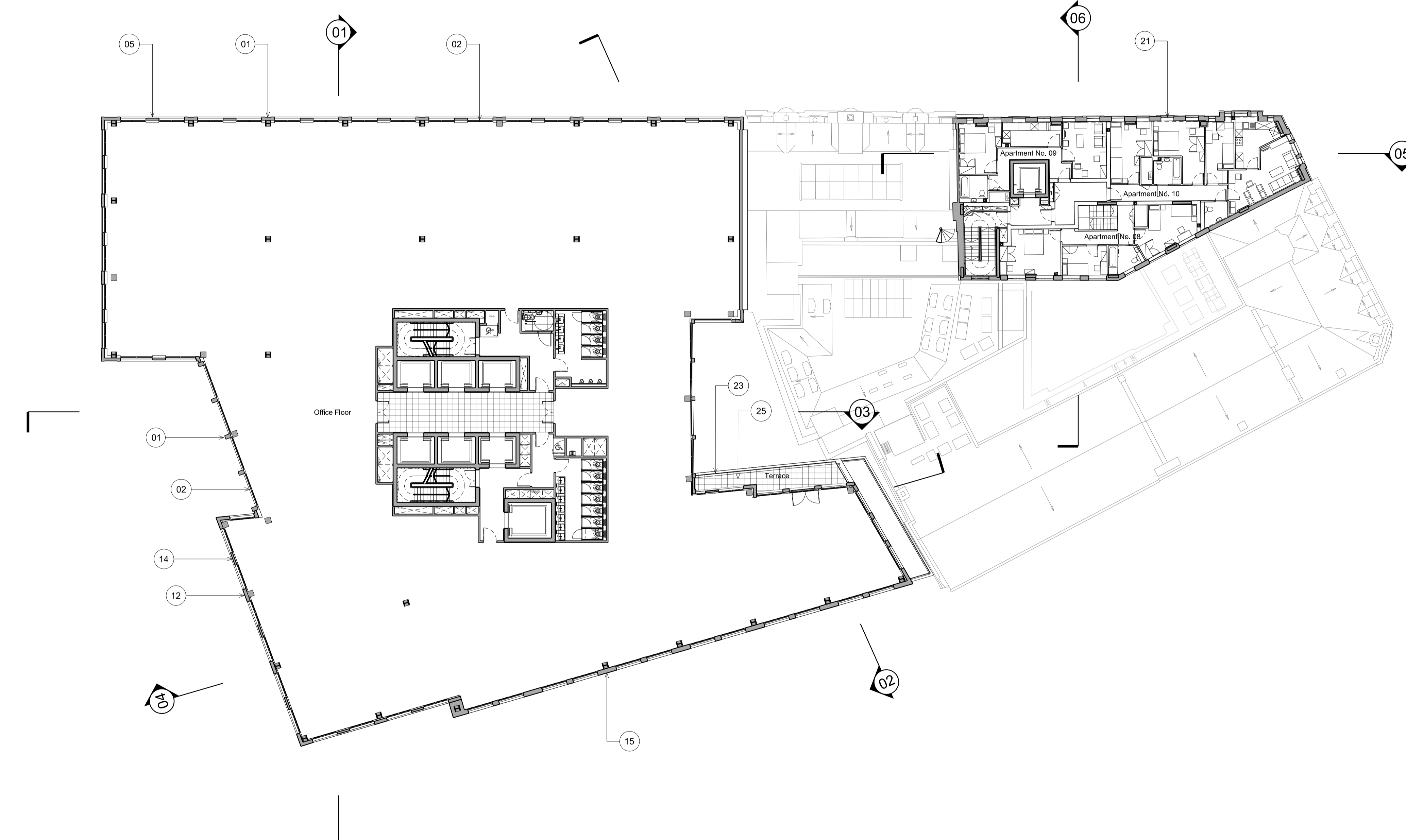
Date Last Saved: Tuesday, April 25, 2017

Disclaimer
Do not scale from this drawing.
Check all dimensions on site before fabrication or setting out.
This document is copyright and may not be reproduced without permission of the owner.

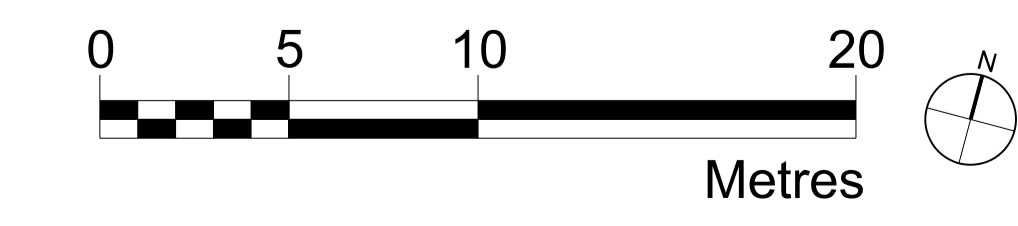
- Key
- 01 Precast masonry element, Pale colour
 - 02 Double glazed unit with aluminium frame
 - 03 Bronze coloured aluminium window frame
 - 04 Bronze coloured aluminium spandrel
 - 05 Precast masonry panel with cast in relief, Pale colour
 - 06 Granite plinth
 - 07 Decorative metalwork screening panel
 - 08 Decorative metalwork balustrade
 - 09 Decorative metalwork panel
 - 10 Retail glazing
 - 11 Retail signage zone
 - 12 Brick, Dark Grey colour
 - 13 Precast lintel
 - 14 Brick textured panel, Dark grey colour
 - 15 Brick, Varied warm colour palette
 - 16 Vaulted soffit
 - 17 Dark grey louvres with concealed framing and close spacing for ventilation.
 - 18 Loading bay door, Bronze colour aluminium vertical louvres
 - 19 Red brick to match existing
 - 20 Buff brick to match existing
 - 21 Double glazed windows
 - 22 Precast masonry element, Colour to match existing
 - 23 Metal balustrade, Dark grey colour
 - 24 Grey coloured metal
 - 25 Concrete paviors
 - 26 Small scale concrete sett paving
 - 27 Large format concrete paviors
 - 28 Dark Brick
 - 29 Tilt and turn double glazed windows

03	Planning	25.04.17	RPP	RPP
02	Planning	20.04.17	RPP	RPP
01	Planning	31.03.17	RPP	RPP
00	Planning	31.01.17	RPP	RPP
Rev	Notes	Date	Dwn	Iss

Consultants
Structural Engineer: Davies Maguire
M&E Engineer: GDM Partnership
Cost Consultant: Currie & Brown
Planning Consultant: Gerald Eve



01 Level 04
1:200



Robin Partington & Partners
Castlewood
35 New Oxford Street
London
WC1A 1DG
+44 20 7419 3500
mail@rplondon.com
www.rplondon.com

Client
Royal London Asset Management

Project
**Castlewood House & Medius House
London, WC1A**

Drawing Title
**General Arrangement
Proposed Plan
Level 04**

Scale	Drawn By	Issued By
1:200 @ A1	RPP	RPP
PLANNING		
Project No.	Drawing No.	Revision
15023	A_PL_P_104	03

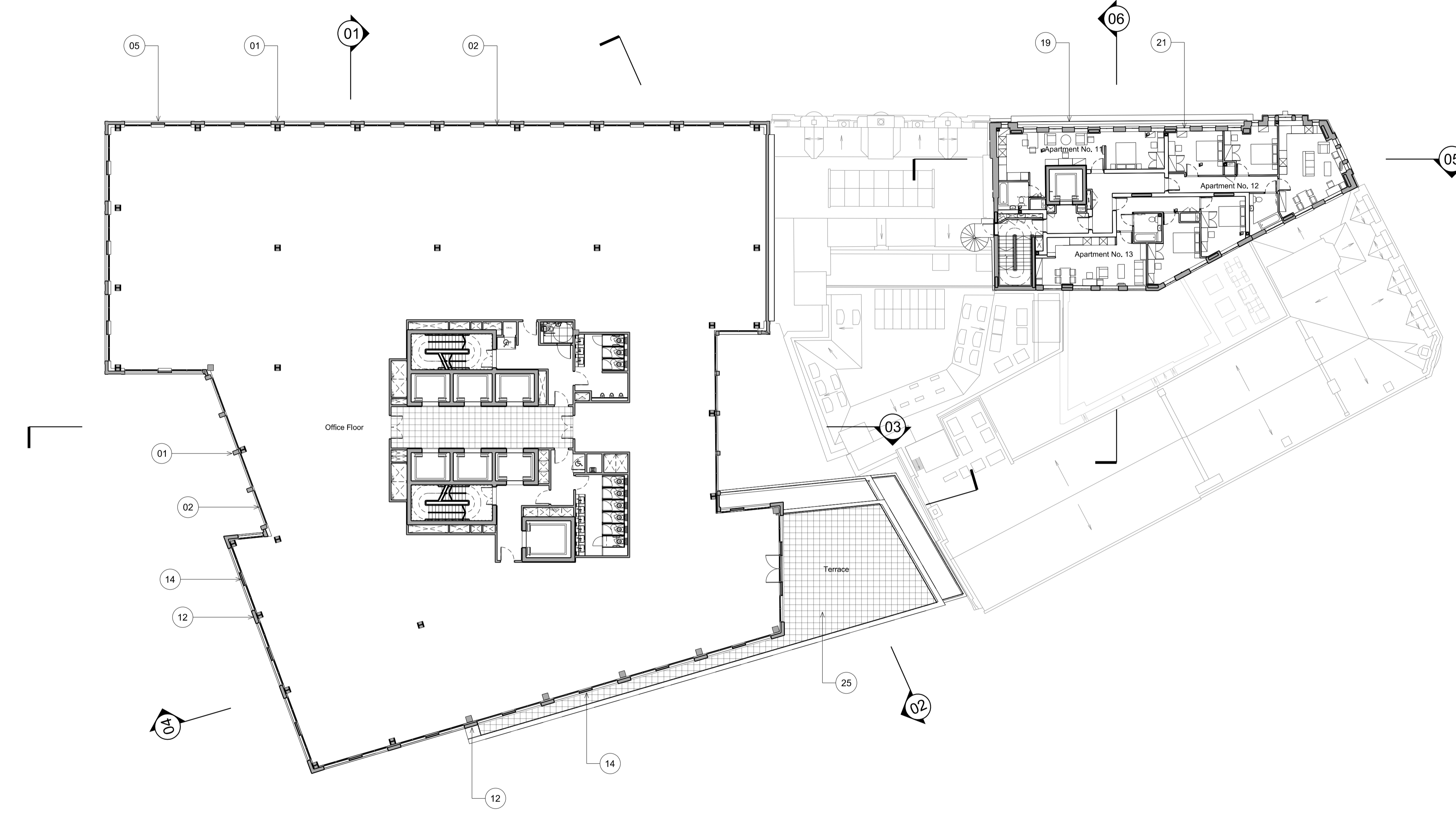
Date Last Saved: Thursday, April 20, 2017

Disclaimer
Do not scale from this drawing.
Check all dimensions on site before fabrication or setting out.
This document is copyright and may not be reproduced without permission of the owner.

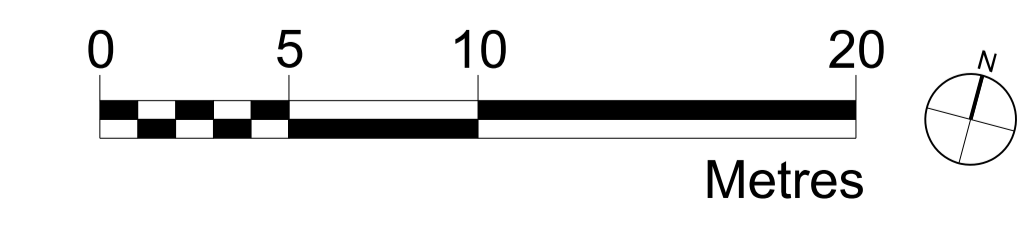
- Key
- 01 Precast masonry element, Pale colour
 - 02 Double glazed unit with aluminium frame
 - 03 Bronze coloured aluminium window frame
 - 04 Bronze coloured aluminium spandrel
 - 05 Precast masonry panel with cast in relief, Pale colour
 - 06 Granite plinth
 - 07 Decorative metalwork screening panel
 - 08 Decorative metalwork balustrade
 - 09 Decorative metalwork panel
 - 10 Retail glazing
 - 11 Retail signage zone
 - 12 Brick, Dark Grey colour
 - 13 Precast lintel
 - 14 Brick textured panel, Dark grey colour
 - 15 Brick, Varied warm colour palette
 - 16 Vaulted soffit
 - 17 Dark grey louvres with concealed framing and close spacing for ventilation.
 - 18 Loading bay door, Bronze colour aluminium vertical louvres
 - 19 Red brick to match existing
 - 20 Buff brick to match existing
 - 21 Double glazed windows
 - 22 Precast masonry element, Colour to match existing
 - 23 Metal balustrade, Dark grey colour
 - 24 Grey coloured metal
 - 25 Concrete paviors
 - 26 Small scale concrete sett paving
 - 27 Large format concrete paviors
 - 28 Dark Brick
 - 29 Tilt and turn double glazed windows

03	Planning	25.04.17	RPP	RPP
02	Planning	20.04.17	RPP	RPP
01	Planning	31.03.17	RPP	RPP
00	Planning	31.01.17	RPP	RPP
Rev	Notes	Date	Dwn	Iss

Consultants
 Structural Engineer: Davies Maguire
 M&E Engineer: GDM Partnership
 Cost Consultant: Currie & Brown
 Planning Consultant: Gerald Eve



01 Level 05
1:200



Robin Partington & Partners
 Castlewood
 35 New Oxford Street
 London
 WC1A 1DG
 +44 20 7419 3500
 mail@rplondon.com
 www.rplondon.com

Client
Royal London Asset Management

Project
**Castlewood House & Medius House
 London, WC1A**

Drawing Title
**General Arrangement
 Proposed Plan
 Level 05**

Scale	Drawn By	Issued By
1:200 @ A1	RPP	RPP
PLANNING		
Project No.	Drawing No.	Revision
15023	A_PL_P_105	03

Date Last Saved: Thursday, April 20, 2017