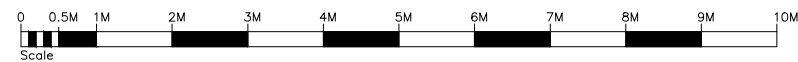


Form, size and materiality of proposed roof extension for No.1 Reed's Place to match adjacent consented roof extension at No.2 Reed's Place (App:2014/2816/P)

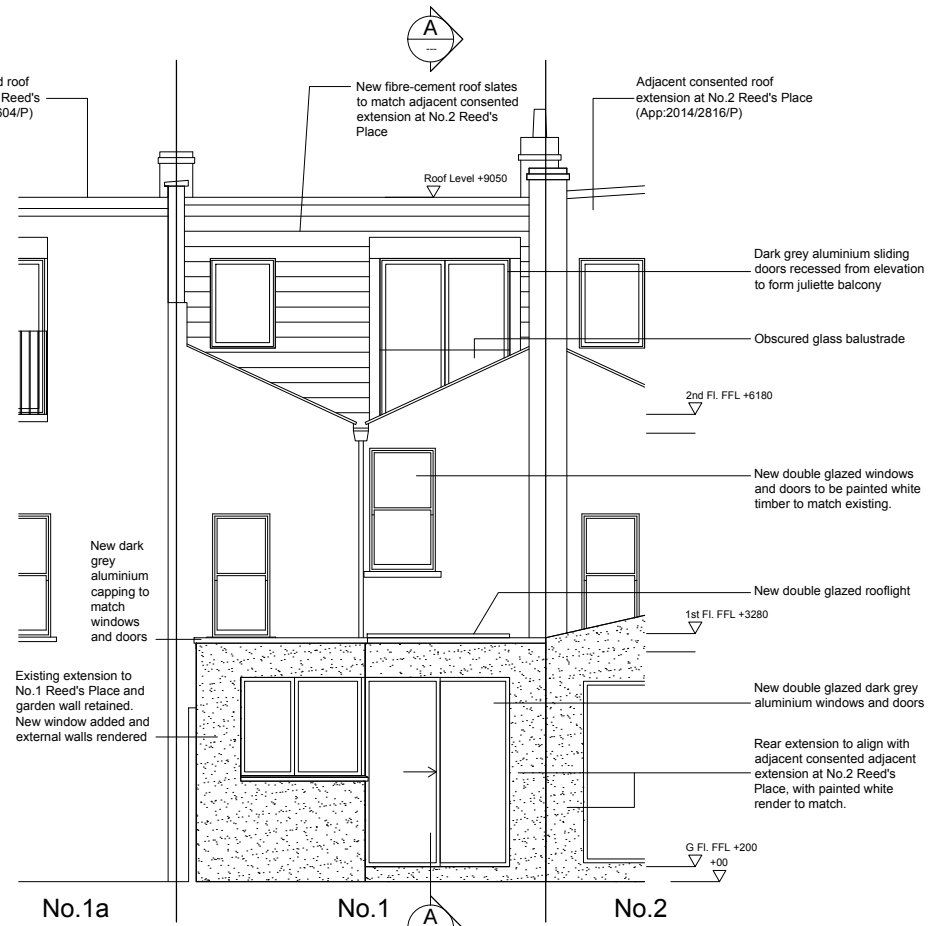


FRONT ELEVATION



Adjacent consented roof extension at No.1a Reed's Place (App:2009/4604/P)

New fibre-cement slates to mansard to match adjacent consented extension at No.2 Reed's Place
New dark grey aluminium rooflight set within mansard



REAR ELEVATION

Adjacent consented roof extension at No.2 Reed's Place (App:2014/2816/P)

Dark grey aluminium sliding doors recessed from elevation to form Juliette balcony

Obscured glass balustrade

New double glazed windows and doors to be painted white timber to match existing.

New double glazed rooflight

New double glazed dark grey aluminium windows and doors

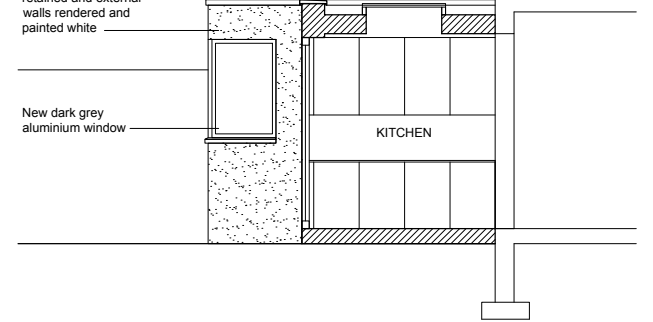
Rear extension to align with adjacent consented adjacent extension at No.2 Reed's Place, with painted white render to match.

New dark grey aluminium capping to match windows and doors

Existing extension to No.1 Reed's Place and garden wall retained. New window added and external walls rendered

Existing extension to No.1 Reed's Place retained and external walls rendered and painted white

New dark grey aluminium window



SIDE ELEVATION

18.10.31_Rev A_ Section A-A added

PROJECT 1 Reeds Place Camden London NW1 9NA	TITLE Proposed	DATE 28.07.18	SCALE 1:100@A3
	DWG Elevations / Section A-A	STATUS Planning	
	DWG NO 202	-	REV A