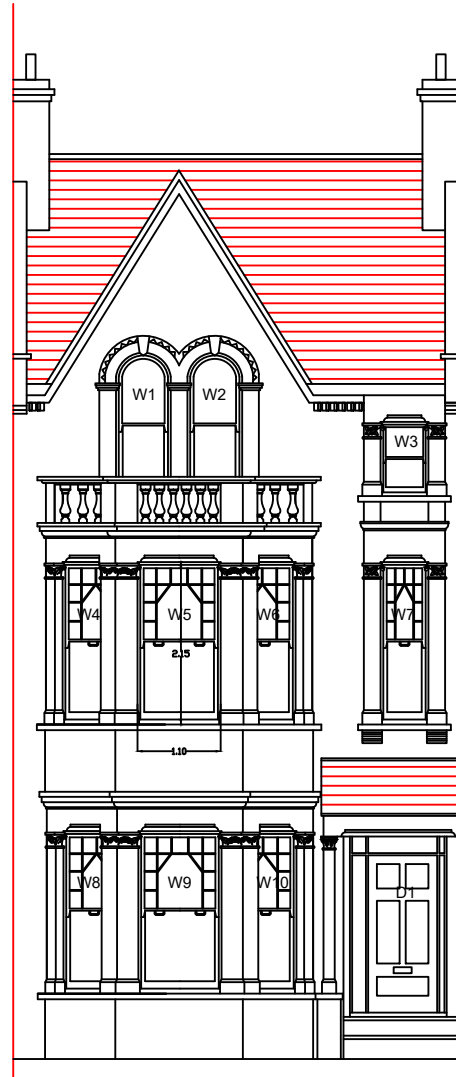


EXISTING TIMBER DOUBLE GLAZED WINDOW TO BE REPLACED

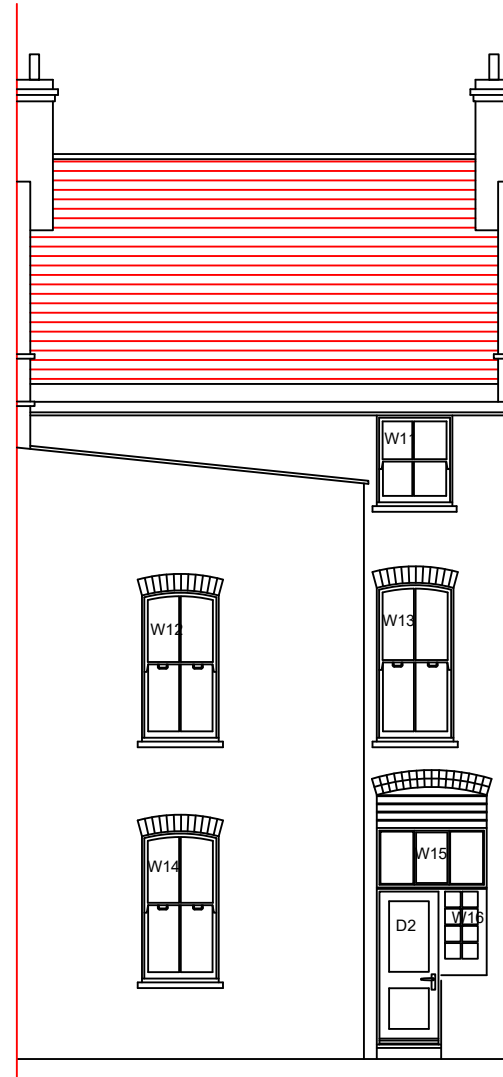
The existing windows are single glazed timber sash windows.



FRONT ELEVATION
(Existing)

EXISTING TIMBER DOUBLE GLAZED WINDOW TO BE REPLACED

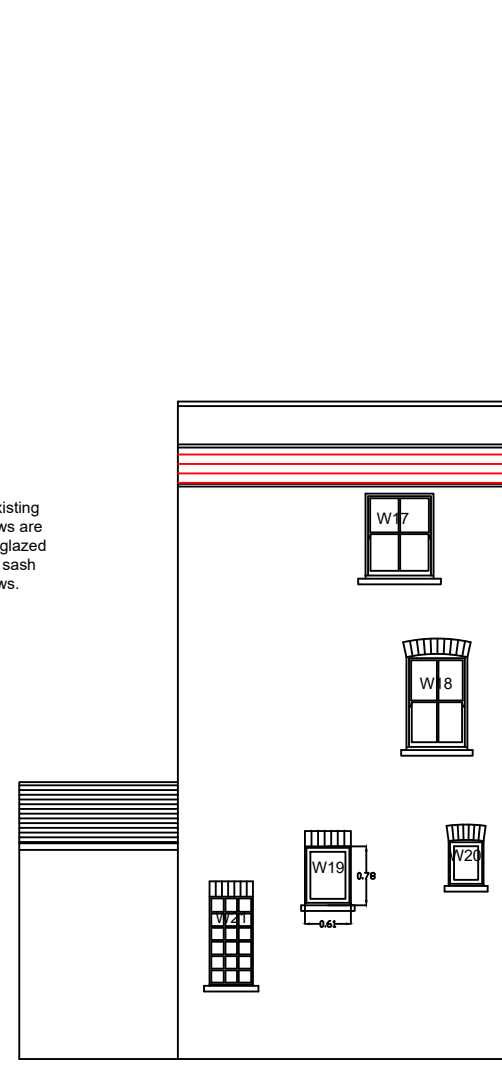
The existing windows are single glazed timber sash windows.



REAR ELEVATION
(Existing)

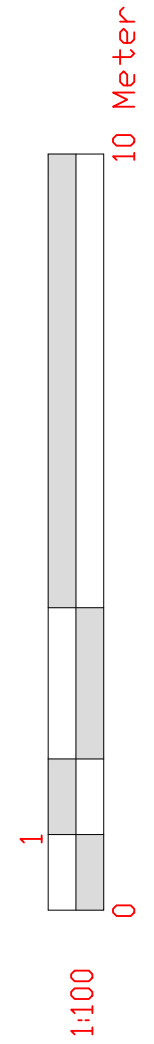
EXISTING TIMBER DOUBLE GLAZED WINDOW TO BE REPLACED

The existing windows are single glazed timber sash windows.



SIDE ELEVATION
(Existing)

Notes:



EMPLOYER'S AGENTS & PROJECT MANAGERS
UNIT A COURT HOUSE, 11A HIGH STREET
BARNET EN5 5UJ
TEL: 020 8446 5537
E-MAIL: Planning@walkercc.co.uk

TITLE
EXISTING ELEVATIONS

PROJECT
59 Gondor Gardens

CLIENT
GENESIS HOUSING ASSOCIATION / KIER

SCALE: AS IDENTIFIED
CAD FILE: -
DATE: 17.10.2018
DRAWN BY: MSR
CHECKED:

PROJECT NO.	DRAWING NO.	REVISION
4323	4323/WM/01	0