

PROPOSED ARE UPVC DOUBLE GLAZED WINDOWS
IN A LIKE FOR LIKE STYLE TO MATCH EXISTING

PROPOSED ARE TIMBER WINDOWS LIKE FOR LIKE
IN A LIKE FOR LIKE STYLE TO MATCH EXISTING

PROPOSED ARE UPVC DOUBLE GLAZED WINDOWS
IN A LIKE FOR LIKE STYLE TO MATCH EXISTING

Proposed are replacement UPVC double glazed sash windows and UPVC double glazed casement windows on the top storey in a like for like style to the existing.

Proposed are replacement UPVC double glazed sash windows and UPVC double glazed casement windows on the top storey in a like for like style to the existing.

Proposed are replacement UPVC double glazed sash windows and UPVC double glazed casement windows on the top storey in a like for like style to the existing.

Proposed are replacement UPVC double glazed sash windows and UPVC double glazed casement windows on the top storey in a like for like style to the existing.

PROPOSALS:

The proposals are for replacement of the existing timber windows at the front, rear and side of the property.

Proposed are replacement UPVC double glazed sash windows and UPVC double glazed casement windows on the top storey in a like for like style to the existing current building regulations as per attached details.

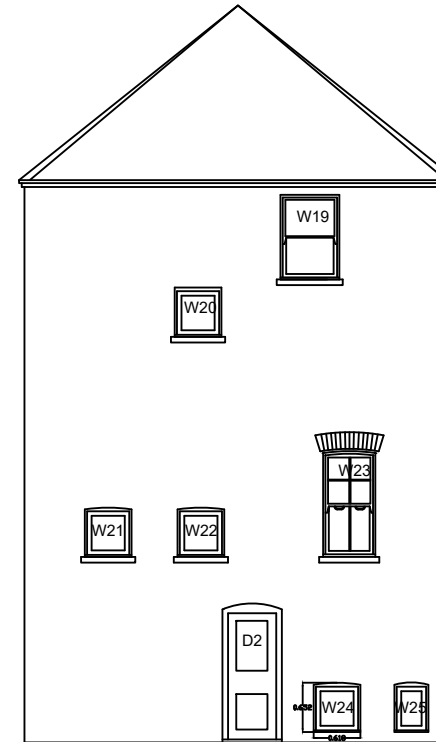
The fenestration will be followed to the front, side and rear elevation.



FRONT ELEVATION
(Proposed)

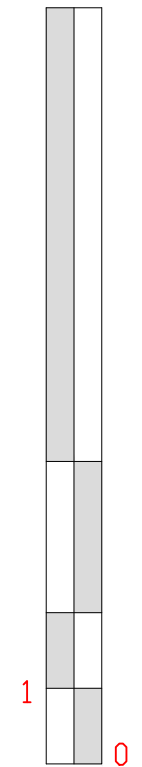


REAR ELEVATION
(Proposed)



SIDE ELEVATION
(Proposed)

10 Meter



1:100

Notes:



EMPLOYER'S AGENTS & PROJECT MANAGERS
UNIT A COURT HOUSE, 11A HIGH STREET
BARNET EN5 5UJ
TEL: 020 8446 5537
E-MAIL: Planning@walkercc.co.uk

TITLE
PROPOSED ELEVATIONS

PROJECT
150 Mill Lane

CLIENT
GENESIS HOUSING ASSOCIATION / KIER

SCALE: AS IDENTIFIED
CAD FILE: -
DATE: 17.10.18
DRAWN BY: RBM
CHECKED:

PROJECT NO.	DRAWING NO.	REVISION
4278	4278/WM/02	0