



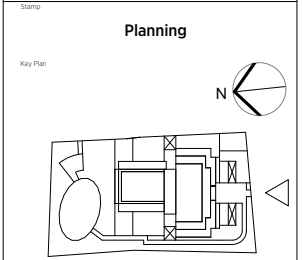
General notes:  
 This drawing is copyright of KSR architects. This drawing must be read in conjunction with the Designer's Risk Assessment, specification and all other relevant documentation and drawings. KSR architects accept no liability for any expense, loss or damage of whatsoever nature and however arising from any variation made to this drawing or in the execution of the work to which it relates which has not been referred to them and their approval obtained.  
 Do not scale from this drawing or the digital data, only figured dimensions are to be used. For Planning refer to linear scale. Check all dimensions on site prior to carrying out any works - advise of any discrepancy.

Notes/Legends  
**Legend**

- External Materials Schedule**
- A Brickwork**  
 Brick: Sussex Beckley Dark Red, Stretcher Bond  
 Mortar: CPI Euromix E100 (Straw brown)  
 (shallow bucket handle)
  - B Cladding**  
 Shackerley Ceramic Granite; colour HER 04  
 1800 x 800 panels (slate colour)
  - C Stone Surround**
  - D Stone Faced Balcony**
  - E Projecting Stone Faced Balcony**  
 (C,D & F) Pennine wet cast Portland stone.
  - F Bronze Finish Surround**  
 Tecu Bronze
  - G1 PPC Aluminium Glazing**  
 Schueco in Brickwork; colour:  
 AkzoNobel Interpon: Steel Bronze 2 Code Y2217F
  - G2 PPC Aluminium Glazing**  
 Schueco in Cladding; colour:  
 RAL 7015 (Slate Grey) 70% Gloss
  - G3 PPC Steel Glazing- Oriel Windows**  
 Forster; colour:  
 AkzoNobel Interpon: Steel Bronze 2 Code Y2217F
  - G4 PPC Aluminium Glazing- Sliding Doors**  
 Vitrocsa (in Cladding); colour:  
 RAL 7015 (Slate Grey) 70% Gloss
  - H PPC Metal Balustrade/Handrail**
- Samples are available on site for Brickwork, Cladding, Cast stone, and the two colours of glazing in Schueco (finishes of Forster & Vitrocsa to be the same)

- Level Roof 133755
- Level 5 Fifth Floor 130180
- Level 4 Fourth Floor 126805
- Level 3 Third Floor 123430
- Level 2 Second FFL 120055
- Level 1 First FFL 116680
- Level 0 Ground Floor 113305
- Level -1 Basement 109930

K	Material info added	28 Sept 19	SAS
	Checked/Revised by: MRS Application	28 Sept 17	SAS
Rev	Description	Date	Check



**KSRARCHITECTS**  
 KSR Architects LLP  
 14 Goswell Street  
 London EC1A 3DF  
 T +44 (0)20 7482 5000  
 www.ksrarchitects.com

Project:  
**29 NEW END**

Title:  
**Proposed South Elevations**

Date:	Aug 2017	Drawn By:	KSR	Checked:	SAS
Scale:	1:100 @ A1	1:200 @ A3	Status:	Planning	
Project Ref:	NEN	Drawing No:	NEN - PL-300	Revision:	K



General notes:  
 This drawing is copyright of KSR architects. This drawing must be read in conjunction with the Designer's Risk Assessment, specification and all other relevant documentation and drawings. KSR architects accept no liability for any expense, loss or damage of whatsoever nature and however arising from any variation made to this drawing or in the execution of the work to which it relates which has not been referred to them and their approval obtained.  
 Do not scale from this drawing or the digital data, only figured dimensions are to be used. For Planning refer to linear scale. Check all dimensions on site prior to carrying out any works - advise of any discrepancy.

Notes/Legends  
**Legend**

- External Materials Schedule**
- A Brickwork**  
 Brick: Sussex Beckley Dark Red, Stretcher Bond  
 Mortar: CPI Euromix E100 (Straw brown) (shallow bucket handle)
  - B Cladding**  
 Shackerley Ceramic Granite; colour HER 04  
 1800 x 800 panels (slate colour)
  - C Stone Surround**
  - D Stone Faced Balcony**
  - E Projecting Stone Faced Balcony**  
 (C,D & F) Pennine wet cast Portland stone.
  - F Bronze Finish Surround**  
 Tecu Bronze
  - G1 PPC Aluminium Glazing**  
 Schueco in Brickwork; colour:  
 AkzoNobel Interpon: Steel Bronze 2 Code Y2217F
  - G2 PPC Aluminium Glazing**  
 Schueco in Cladding; colour:  
 RAL 7015 (Slate Grey) 70% Gloss
  - G3 PPC Steel Glazing- Oriel Windows**  
 Forster; colour:  
 AkzoNobel Interpon: Steel Bronze 2 Code Y2217F
  - G4 PPC Aluminium Glazing- Sliding Doors**  
 Vitrocsa (in Cladding); colour:  
 RAL 7015 (Slate Grey) 70% Gloss
  - H PPC Metal Balustrade/Handrail**

Samples are available on site for Brickwork, Cladding, Cast stone, and the two colours of glazing in Schueco (finishes of Forster & Vitrocsa to be the same)

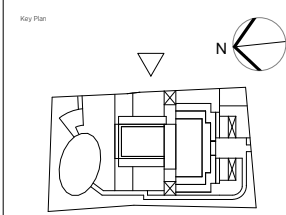


- Level Roof 133755
- Level 5 Fifth Floor 130180
- Level 4 Fourth Floor 126805
- Level 3 Third Floor 123430
- Level 2 Second FFL 120055
- Level 1 First FFL 116680
- Level 0 Ground Floor 113305
- Level -1 Basement 109930

Ref.	Description	Date	Checked
K	Material info added	28 Sept 19	SAS
J	General Revised for M100 Application	27 Sept 17	SAS

© KSR architects  
 Stamp

**Planning**



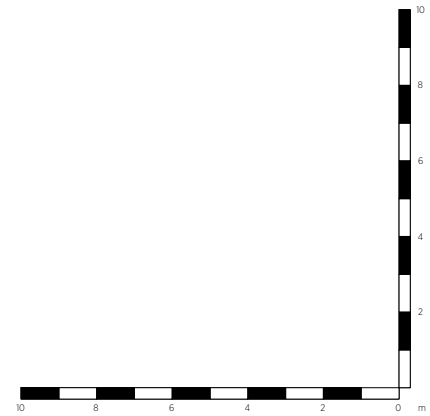
**KSRARCHITECTS**  
 KSR Architects LLP  
 14 Goswell Street  
 London EC1A 7DU  
 T +44 (0)20 7882 5000  
 www.ksrarchitects.com

Project:  
**29 NEW END**

Title:  
**Proposed East Elevation**

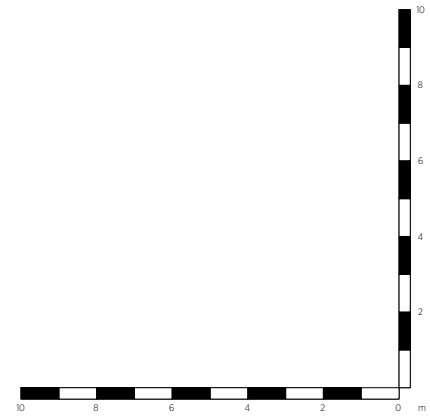
Date:	Aug 2017	Drawn By:	KSR	Checked:	SAS
Scale:	1:100 @ A1	1:200 @ A3	Status:		

Project Ref:	Drawing No:	Revision:
NEN	NEN - PL-310	K





Level Roof	133755
Level 5 Fifth Floor	130180
Level 4 Fourth Floor	126805
Level 3 Third Floor	123430
Level 2 Second FFL	120055
Level 1 First FFL	116680
Level 0 Ground Floor	113305
Level -1 Basement	109930



**General notes:**  
 This drawing is copyright of KSR architects. This drawing must be read in conjunction with the Designer's Risk Assessment, specification and all other relevant documentation and drawings. KSR architects accept no liability for any expense, loss or damage of whatsoever nature and however arising from any variation made to this drawing or in the execution of the work to which it relates which has not been referred to them and their approval obtained.  
 Do not scale from this drawing or the digital data, only figured dimensions are to be used. For Planning refer to linear scale. Check all dimensions on site prior to carrying out any works - advise of any discrepancy.

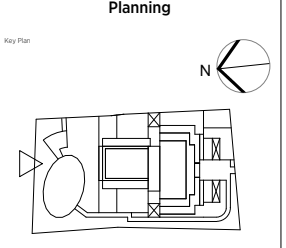
**Notes/Legends**

- Legend**
- External Materials Schedule**
- A Brickwork**  
 Brick: Sussex Beckley Dark Red, Stretcher Bond  
 Mortar: CPI Euromix E100 (Straw brown) (shallow bucket handle)
  - B Cladding**  
 Shackerley Ceramic Granite; colour HER 04 1800 x 800 panels (slate colour)
  - C Stone Surround**
  - D Stone Faced Balcony**
  - E Projecting Stone Faced Balcony**  
 (C,D & F) Pennine wet cast Portland stone.
  - F Bronze Finish Surround**  
 Tecu Bronze
  - G1 PPC Aluminium Glazing**  
 Schueco in Brickwork; colour: AkzoNobel Interpon: Steel Bronze 2 Code Y2217F
  - G2 PPC Aluminium Glazing**  
 Schueco in Cladding; colour: RAL 7015 (Slate Grey) 70% Gloss
  - G3 PPC Steel Glazing- Oriel Windows**  
 Forster; colour: AkzoNobel Interpon: Steel Bronze 2 Code Y2217F
  - G4 PPC Aluminium Glazing- Sliding Doors**  
 Vitrocsa (in Cladding); colour: RAL 7015 (Slate Grey) 70% Gloss
  - H PPC Metal Balustrade/Handrail**

Samples are available on site for Brickwork, Cladding, Cast stone, and the two colours of glazing in Schueco (finishes of Forster & Vitrocsa to be the same)

K	Material info added	28 Sept 19	SAS
L	Ground Floor to M100 Application	27 Sept 17	SAS

No.	Description	Date	Check
© KSR architects			
Stamp			



**KSRARCHITECTS**  
 KSR Architects LLP  
 14 Grosvenor Street  
 London W1R 0ND  
 Email: info@ksrarchitects.com  
 Tel: +44 (0)20 7482 5000  
 Website: www.ksrarchitects.com

Project:  
**29 NEW END**

Title:  
**Proposed North Elevation**

Date:	Aug 2017	Drawn By:	KSR	Checked:	SAS
Scale:	1:100 @ A1	1:200 @ A3	Status:		

Project Ref:	Drawing No:	Revision:
NEN	NEN - PL-320	K

