

# Royal Bank of Scotland.

ONEA 48953324 – 127-128 High Holborn,  
London WC1V 6PQ.

Cable route from intake point to comms cab

.



A photograph of a tunnel interior showing a cable installation project. A thick black cable runs along the top of a concrete wall. A red dashed line indicates the cable's path, starting from the top left, following the wall, and then turning right to enter a window frame. A red arrow points from the 'NEW CABLE' label to the cable. Another red arrow points from the 'HOLE TO BE DRILLED IN WINDOW FRAME FOR INCOMING CABLE' label to a red dashed circle in the window frame. A metal electrical box is visible in the bottom left corner.

NEW CABLE

HOLE TO BE DRILLED IN  
WINDOW FRAME FOR  
INCOMING CABLE

BSMT KITCHEN AREA

NEW CABLE

HOLE TO BE DRILLED IN  
WINDOW FRAME FOR  
INCOMING CABLE

MDU12FDP





BSMT CORRIDOR

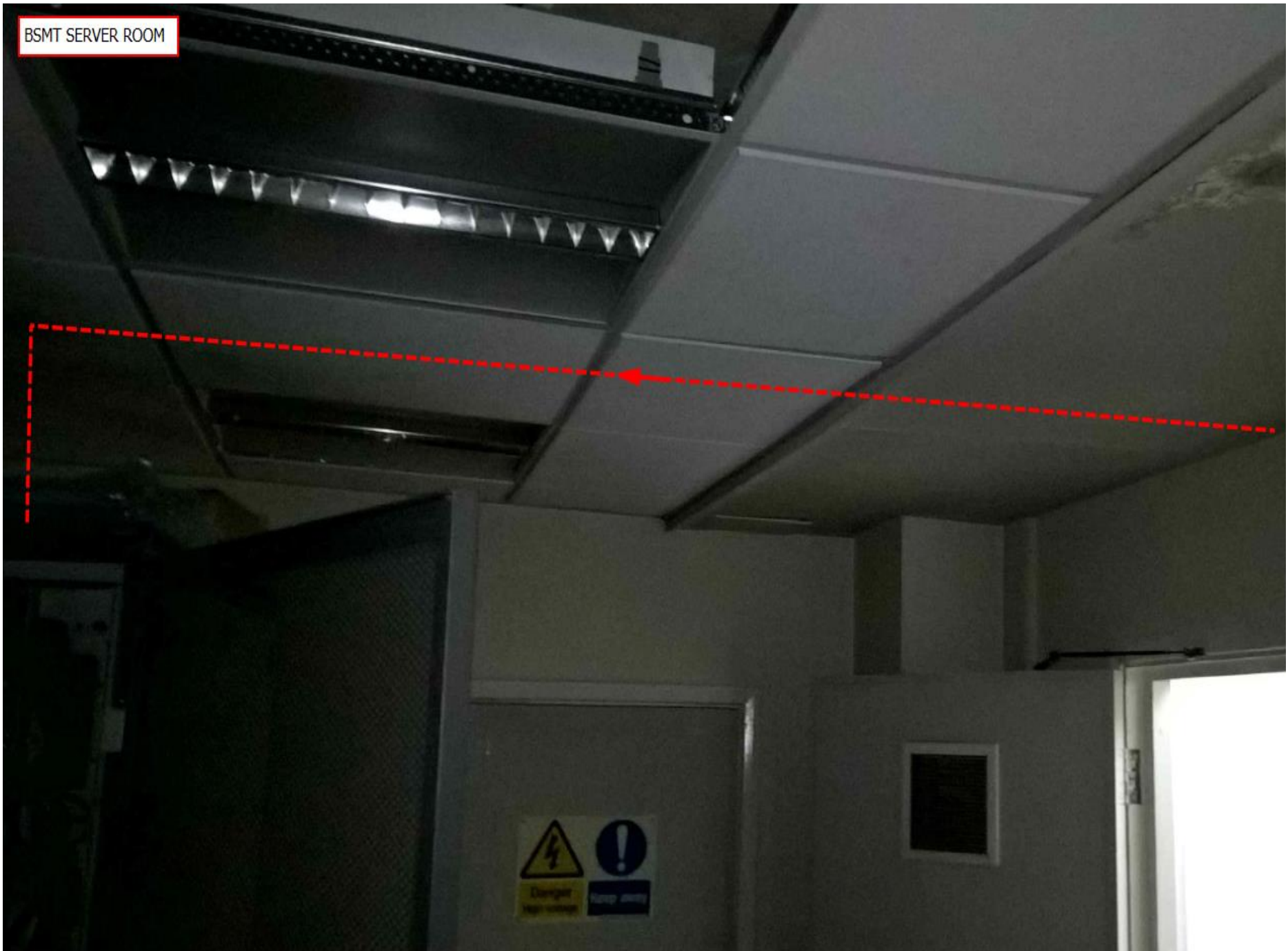


KITCHEN AREA



SERVER ROOM

BSMT SERVER ROOM



BSMT COMMS CAB IN SERVER ROOM

