

Important notes for electrical contractor

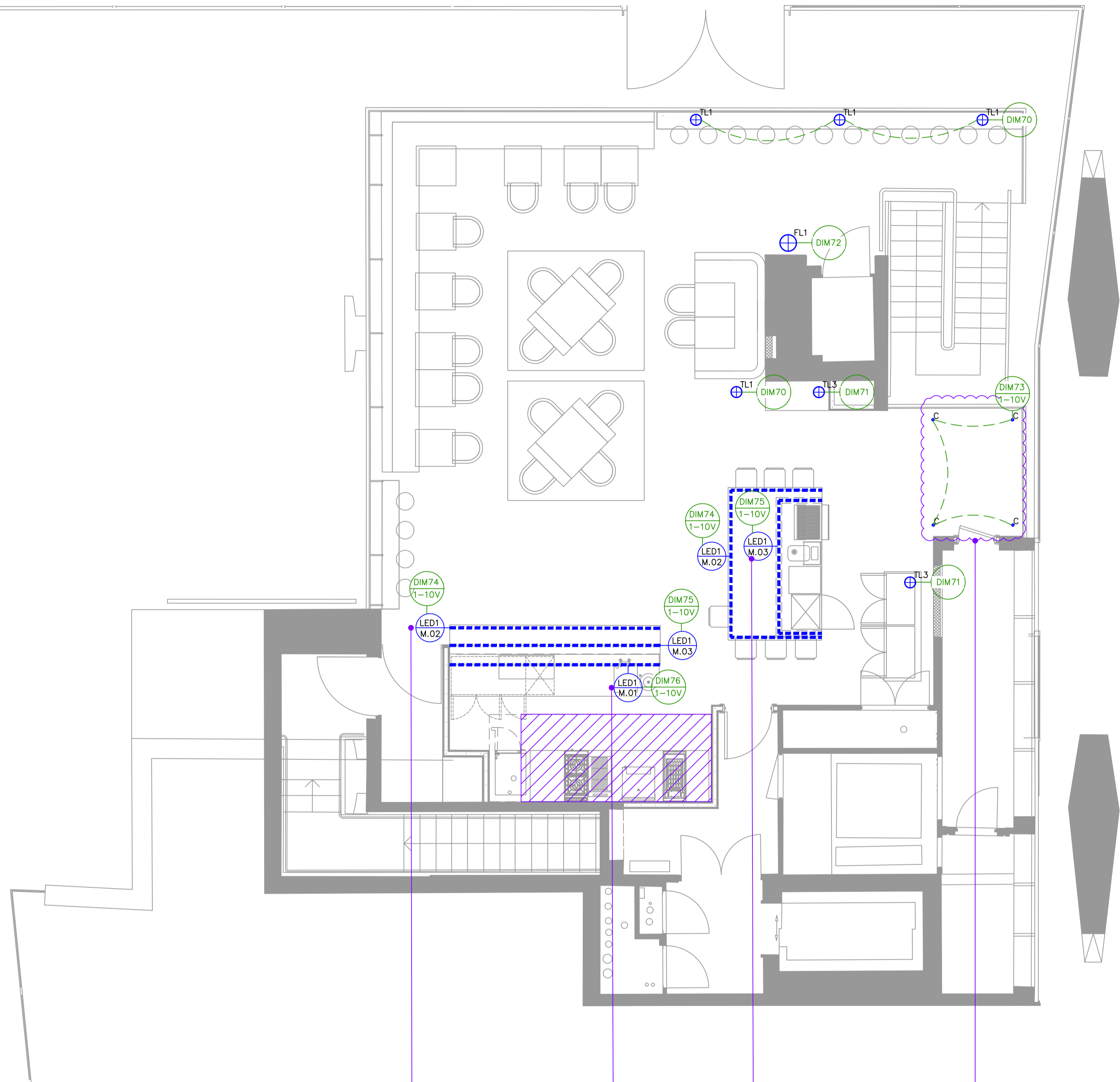
All directional light fittings to be angled by electrical contractor onto product/ displays/ artwork/ tables/ other in accordance with the lighting drawing/ any designer or client instructions. This must be carried out in advance of the final lighting commissioning/ any programming visit by the lighting consultant/ dimming engineer. Into Lighting do not carry out any works at high level.

Where DMX control is shown on the lighting layout the DMX control cabling should be wired in a daisy-chain using Belden 9841 cable, the maximum cable length from the source of the DMX output to the furthest DMX driver is 250m. A maximum of 32 DMX units can be connected to each DMX universe. If you have any questions about how to wire the DMX signal cable please contact Into on 0845 873 7013 or at technical@into.co.uk

Important note for emergency lighting design and specification

Where Into Lighting drawings show layouts for emergency lighting these are provisional layouts to help ensure sympathetic integration into the architecture and general lighting scheme. It is the responsibility of the mechanical and electrical consultant/ contractor to ensure that the emergency lighting scheme and specification meets with BS5266 and any local requirements. Where Into Lighting drawings do not show provisional layouts for emergency lighting it is the responsibility of the mechanical and electrical consultant/ contractor to provide the layout and specification.

It is the responsibility of the installing electrical contractor/ consultant to ensure the appropriate specification, supply and install of fire and/or acoustic hoods / down lights where required. The specification should meet with the specific site requirements, be fully compatible with any down lights specified and be installed in accordance with the manufacturers guidelines.



TYPE: LED1 M.02
SURFACE MOUNTED LINEAR LUMINAIRE CONCEALED WITHIN BAR NOSING WASHING DOWN. EXACT LOCATION / DETAIL SHOWN FOR PLANNING.

TYPE: LED1 M.01
SURFACE MOUNTED LINEAR LUMINAIRE CONCEALED TO THE WORKING SIDE OF THE BAR. EXACT LOCATION / DETAIL SHOWN FOR PLANNING.

TYPE: LED1 M.03
SURFACE MOUNTED LINEAR LUMINAIRE CONCEALED TO THE BAR GENTRY. EXACT LOCATION / DETAIL SHOWN FOR PLANNING.

TYPE C:
SURFACE MOUNTED ADJUSTABLE SPOTLIGHT, MOUNTED TO FLOOR ILLUMINATING ARTWORK. EXACT LOCATION SHOWN FOR PLANNING.

NOTE:
ALL LOCATIONS OF NON-FIXED FURNISHINGS SHOWN ARE INDICATIVE ONLY.

<p>INTO LIGHTING LEGEND</p>		<p>FL1 FREE STANDING FEATURE FLOOR LAMP C/W 2 X 230V 1.5W LED</p>		<p>TL3 SURFACE MOUNTED FEATURE TABLE LAMP C/W 230V 6W LED</p>		<p>Symbols in key are not to scale</p> <p>PROPOSED FOR PLANNING</p> <p>Rev D NEW GA / GENERAL REVISION</p> <p>Rev C REVISIONS RUBBED IN RED</p> <p>Rev B REFERENCES AMENDED</p>
<p>C SURFACE MOUNTED ADJUSTABLE SPOTLIGHT C/W 500MA 7W LED</p>		<p>LED1 M.02 SURFACE MOUNTED LINEAR LUMINAIRE C/W 24V 13.2W LED</p>		<p>TL1 SURFACE MOUNTED FEATURE TABLE LAMP - FITTING TO BE CONFIRMED</p>		
<p>LED1 M.01 SURFACE MOUNTED LINEAR LUMINAIRE C/W 24V 13.2W LED</p>		<p>LED1 M.03 SURFACE MOUNTED LINEAR LUMINAIRE C/W 24V 13.2W LED</p>				
<p>Project Title STREET MARKETS LTD, CENTRE POINT, LINK BUILDING, W1</p>		<p>Drawing Title PROPOSED LIGHTING LAYOUT FOR PLANNING - MEZZANINE FLOOR</p>		<p>Date 25.10.18</p>		<p>into</p> <p>Info Lighting Ltd 4 O'Meara Street London SE1 1TE T: +44 (0) 845 873 7013 F: +44 (0) 845 873 7018 E: email@into.co.uk</p> <p><small>This drawing and all associated documents issued for the purposes of design information remain the intellectual property of Into Lighting Limited. The drawing and all associated documents or information developed from their contents may not be reproduced or transmitted in any form or by any means, electronic, mechanical, photocopying, recording, or by any information storage and retrieval system, without prior written permission from Into Lighting Limited. In the event that this occurs, Into Lighting Limited reserves the right to pursue a design claim. The positions shown on this drawing represent design intent. Any queries should be checked with the design team.</small></p> <p>All dimensions must be checked on site. Do not scale from this drawing.</p>
<p>Drawn CM</p>		<p>Scale 1:50 @ A1</p>		<p>Project 12561</p>		
<p>Number P02</p>		<p>Revision D</p>		<p>Project 12561</p>		