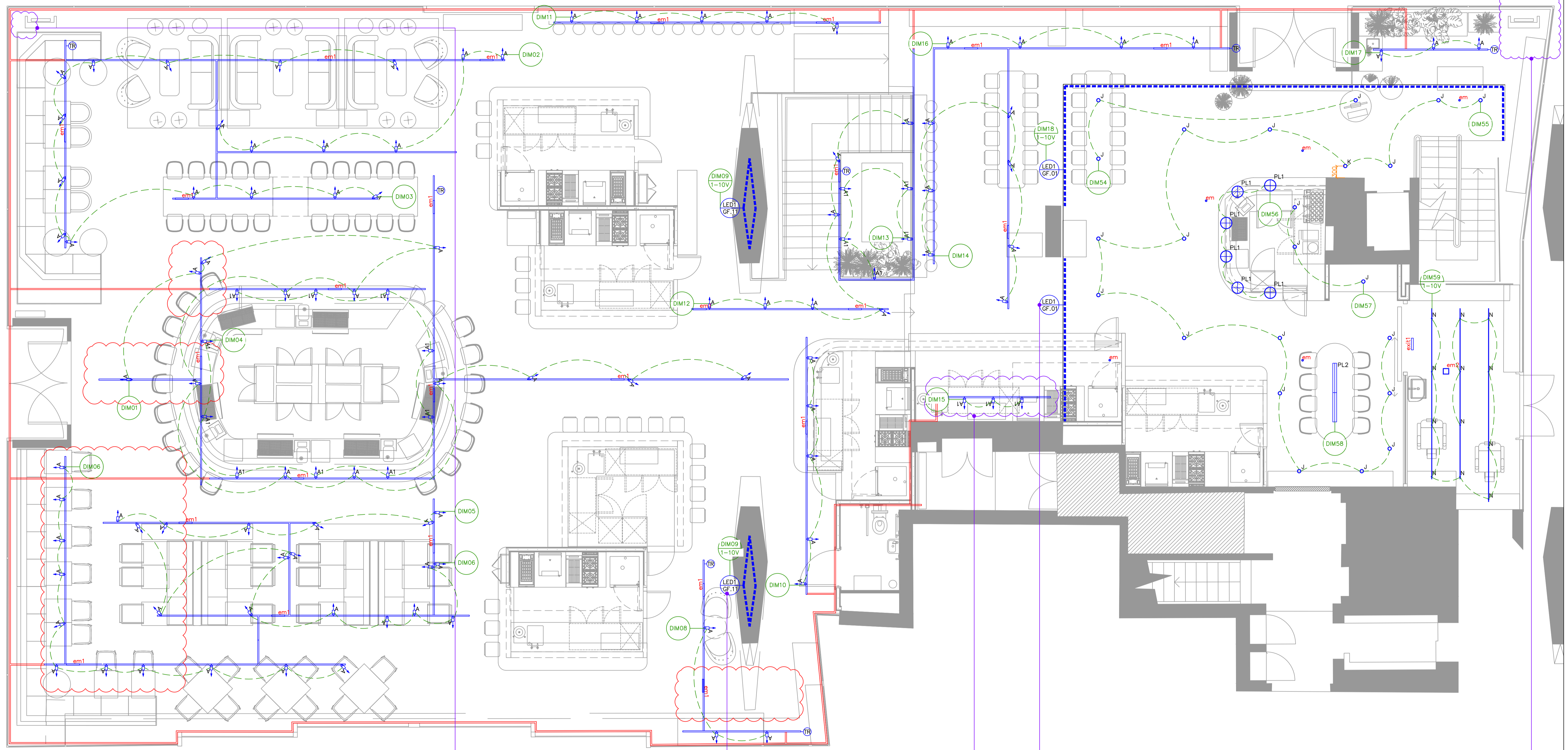


**Important notes for electrical contractor**

All directional light fittings to be angled by electrical contractor onto product/ displays/ artwork/ tables/ other in accordance with the lighting drawing/ any designer or client instructions. This must be carried out in advance of the final lighting commissioning/ any programming visit by the lighting consultant/ dimming engineer. Into Lighting do not carry out any works at high level.  
 Where DMX control is shown on the lighting layout the DMX control cabling should be wired in a daisy-chain using Belden 9841 cable, the maximum cable length from the source of the DMX output to the furthest DMX driver is 250m. A maximum of 32 DMX units can be connected to each DMX universe. If you have any questions about how to wire the DMX signal cable please contact Into on 0845 873 7013 or at technical@into.co.uk  
 Important note for emergency lighting design and specification  
 Where Into Lighting drawings show layouts for emergency lighting these are provisional layouts to help ensure sympathetic integration into the architecture and general lighting scheme. It is the responsibility of the mechanical and electrical consultant/ contractor to ensure that the emergency lighting scheme and specification meets with BS5266 and any local requirements. Where Into Lighting drawings do not show provisional layouts for emergency lighting it is the responsibility of the mechanical and electrical consultant/ contractor to provide the layout and specification.  
 It is the responsibility of the installing electrical contractor/ consultant to ensure the appropriate specification, supply and install of fire and/or acoustic hoods / down lights where required. The specification should meet with the specific site requirements, be fully compatible with any down lights specified and be installed in accordance with the manufacturers guidelines.



**NOTE:**  
 ALL LOCATIONS OF NON-FIXED FURNISHINGS SHOWN ARE INDICATIVE ONLY.

**NOTE:**  
 ILLUMINATED SIGNAGE BY OTHERS. SIGNAGE TO BE CONTROLLED SEPARATELY TO THE DIMMING SYSTEM.

**NOTE:**  
 TYPE LED1 GF.11 SURFACE MOUNTED LINEAR LUMINAIRE AT HIGH LEVEL ILLUMINATING COLUMN TOP. EXACT LOCATION / DETAIL SHOWN FOR PLANNING.

**NOTE:**  
 TRACK MOUNTED ADJUSTABLE SPOTLIGHTS TO HIGH LEVEL ARTWORK. EXACT LOCATION / DETAIL SHOWN FOR PLANNING.

**NOTE:**  
 TYPE LED1 GF.01 SURFACE MOUNTED LINEAR LUMINAIRE CONCEALED WITHIN MEZZANINE BALUSTRADE WASHING UP. EXACT LOCATION / DETAIL SHOWN FOR PLANNING.

**NOTE:**  
 ILLUMINATED SIGNAGE BY OTHERS. SIGNAGE TO BE CONTROLLED SEPARATELY TO THE DIMMING SYSTEM.

INTO LIGHTING LEGEND	
TRACK MOUNTED ADJUSTABLE SPOTLIGHT C/W 240V 9W LED	RECESSED ADJUSTABLE DOWNLIGHT C/W 250MA 9W LED
TRACK MOUNTED ADJUSTABLE SPOTLIGHT C/W 240V 9W LED	SEMI RECESSED ADJUSTABLE SPOTLIGHT C/W 700MA 2.4W LED
SURFACE MOUNTED LINEAR LUMINAIRE C/W 24V 13.2W LED	SUSPENDED FEATURE PENDANT C/W 6 X 230V 6W LED
SURFACE MOUNTED LINEAR LUMINAIRE C/W 24V 13.2W LED	PERIMETER LIGHTING TROUGH TO ARCHITECTS DETAIL
SUSPENDED FEATURE PENDANT C/W 230V 6W LED	TRACK MOUNTED EMERGENCY ROUTE LIGHT C/W 240V 3W LED 3HOUR EMERGENCY BATTERY PACK
SUSPENDED 3 CIRCUIT TRACK	SURFACE MOUNTED EMERGENCY ROUTE LIGHT C/W 2W LED 3HOUR EMERGENCY BATTERY PACK
RECESSED EMERGENCY ROUTE LIGHT C/W 3W LED 3HOUR EMERGENCY BATTERY PACK	SURFACE MOUNTED EMERGENCY EXIT SIGN C/W LED 3HOUR EMERGENCY BATTERY PACK - ARROW DOWN

**PROPOSED FOR PLANNING**

Rev F REVISIONS CLOUDED IN RED  
 Rev E NEW RCP / GENERAL REVISIONS  
 Rev D GENERAL REVISIONS

<b>Project Title</b> STREET MARKETS LTD, CENTRE POINT, LINK BUILDING, W1		
<b>Drawing Title</b> PROPOSED LIGHTING LAYOUT FOR PLANNING - GROUND FLOOR RCP		
Date 26.10.18	Drawn CM	Scale 1:50 @ A1
Project 12561	Number C01	Revision F

Info Lighting Ltd  
 4 O'Meara Street  
 London  
 SE1 1TE  
 T: +44 (0) 845 873 7013  
 F: +44 (0) 845 873 7018  
 E: email@into.co.uk

**into**

The drawing and all associated documents issued for the purposes of design information remain the intellectual property of Into Lighting Limited. No part of this drawing or information developed from that content may be reproduced, stored in a retrieval system, or transmitted in any form or by any means, electronic, mechanical, photocopying, recording, or by any information storage and retrieval system, without prior written permission from Into Lighting Limited. In the event that this occurs, Into Lighting Limited reserves the right to pursue a design infringement claim. The authors and associated parties accept no liability for any errors or omissions in this drawing. All dimensions must be checked on site. Do not scale from this drawing.

**All dimensions must be checked on site  
 Do not scale from this drawing**